

2025 Statewide WMA Meeting

November 2025



Today's agenda

Cal-IPC Intro

WMA Reports:

- Ventura WMA
- San Diego WMA
- Santa Ana River/Orange County WMA
- Alameda/Contra Costa WMA

CDFA Report

Resources:

- WeedCUT
- Calflora & CalWeedMapper



Funding the WMA Program

Weed work needs steady funding.

However, the WMA program gets funded by one-time budget allocations, with gaps in between.

Cal-IPC is the lead advocate for funding the WMA program.

We need your help in demonstrating the value of the work funded, so we have the best chance of securing steady funding for the program.

What kind of projects?

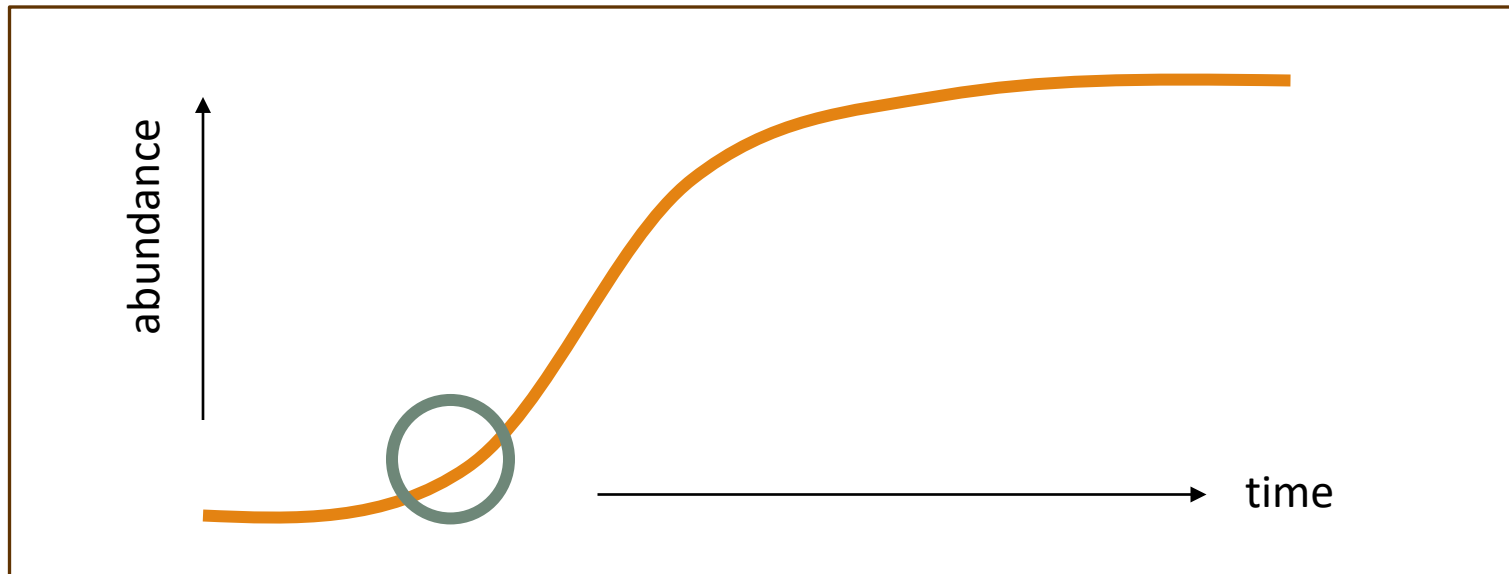
Think practically – what's shovel ready?

Think local – what sites are key to protect?.

Think regionally – what bad weeds are just getting started?

Regional EDRR strategy

To reduce weed impacts, we need regional strategy to stop the weeds that are just getting started.



What success looks like

Ideal world – in 5 years, each WMA would be able to say...

“We have fully controlled all populations of our most important regional EDRR weeds every year for 5 years. The amount of these weeds has been reduced by 90%, and we are on the path toward eradicating them across the region.”

Real world – can’t do **full** control of **all** populations **every** year, but work hard to get as close as possible

Search by Species

- Indicates species with suitable range map available
- Indicates species with statewide expert knowledge

Euphorbia terracina
carnation spurge

Get report for species: [PDF](#)




Photo courtesy of Joe DiTomaso

Cal-IPC Rating: **Limited**

CDFA Rating: **W**

Suitable Range Model: **No**

Statewide Expert Knowledge: **Yes**

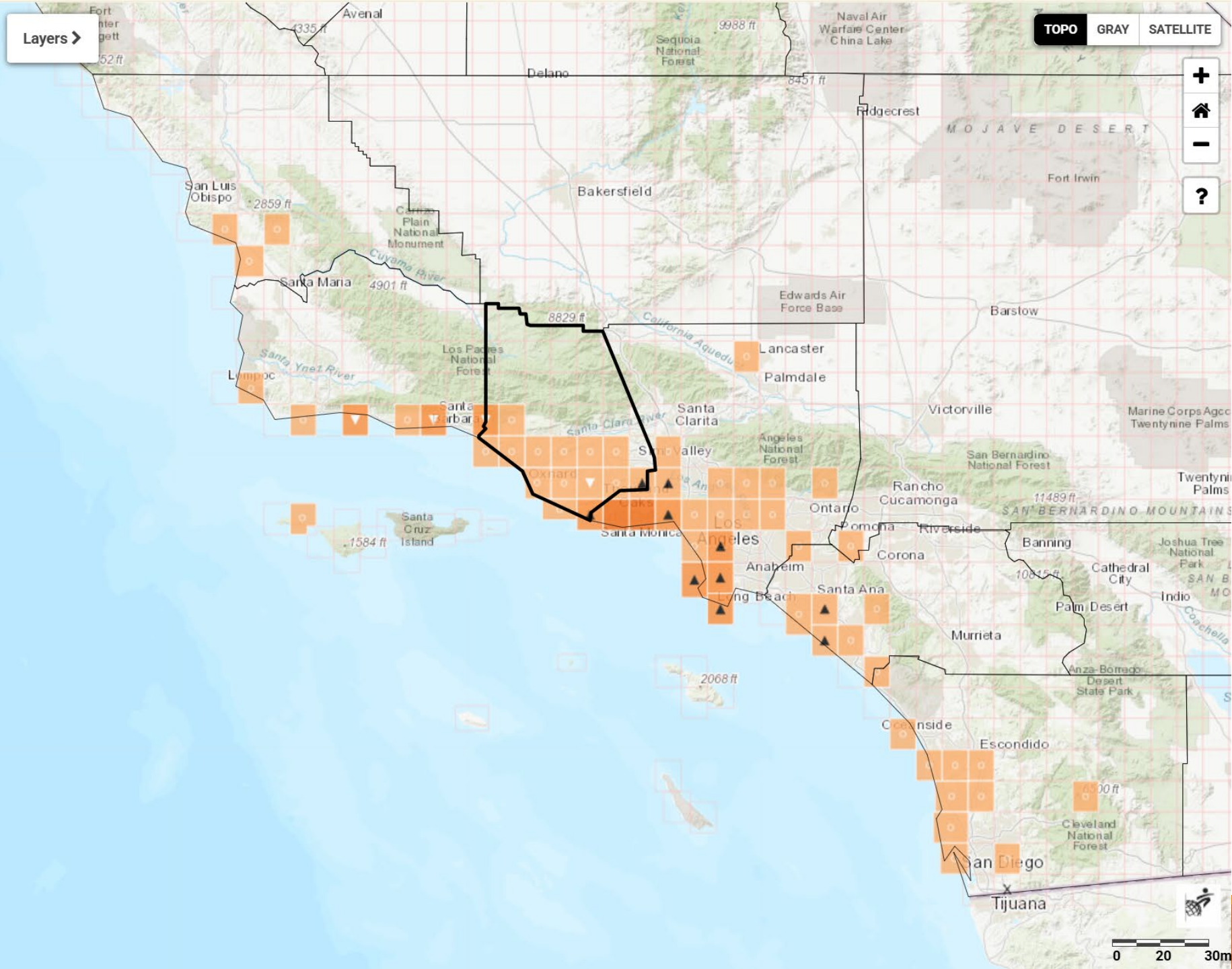
[+ Show Species Description](#)

See species timeline: [Timeline](#)

Additional information: See Cal-IPC's Plant Profile or Calflora's Taxon Report.

Search by Region

Ventura WMA



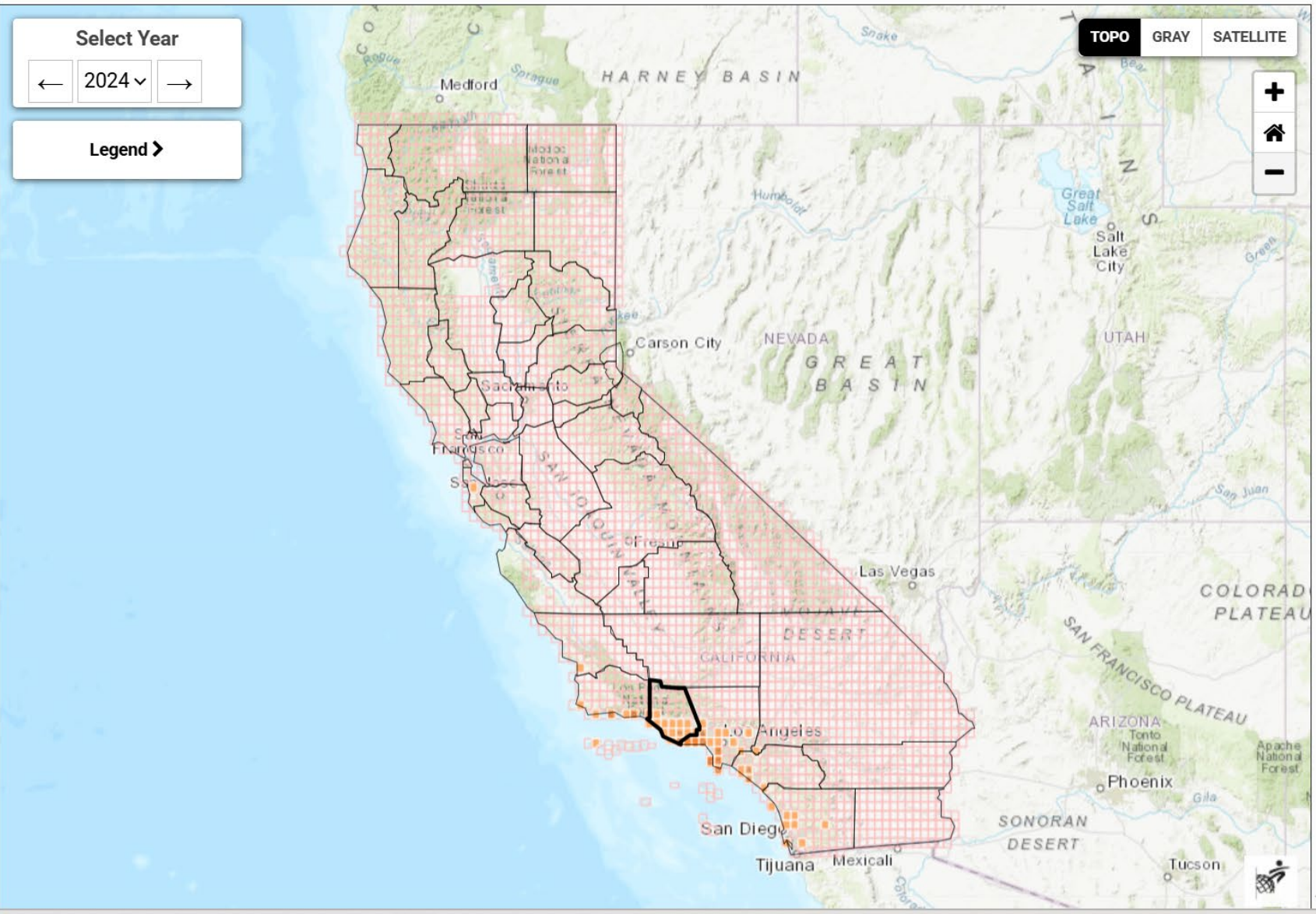
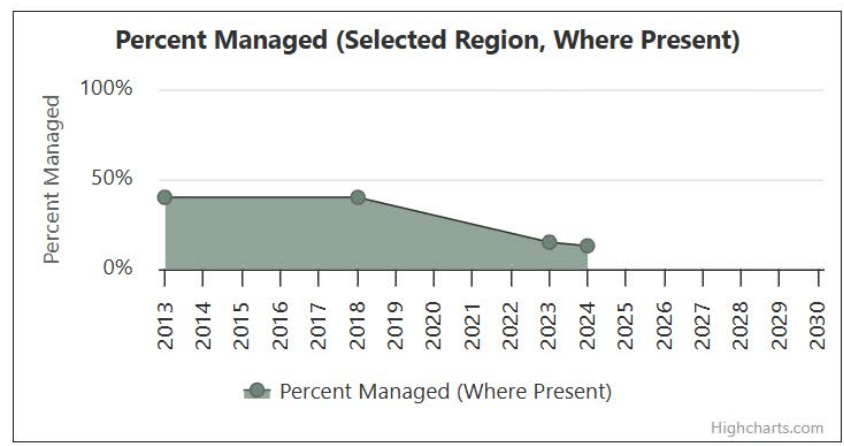
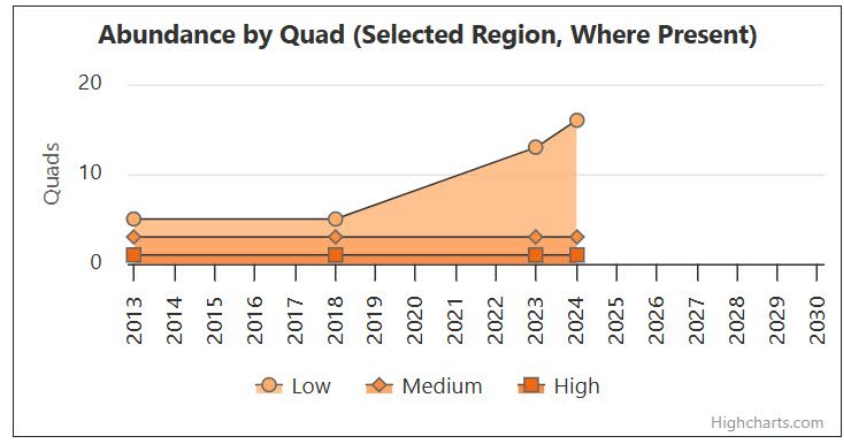
Euphorbia terracina Map and Trend

Open in CWM

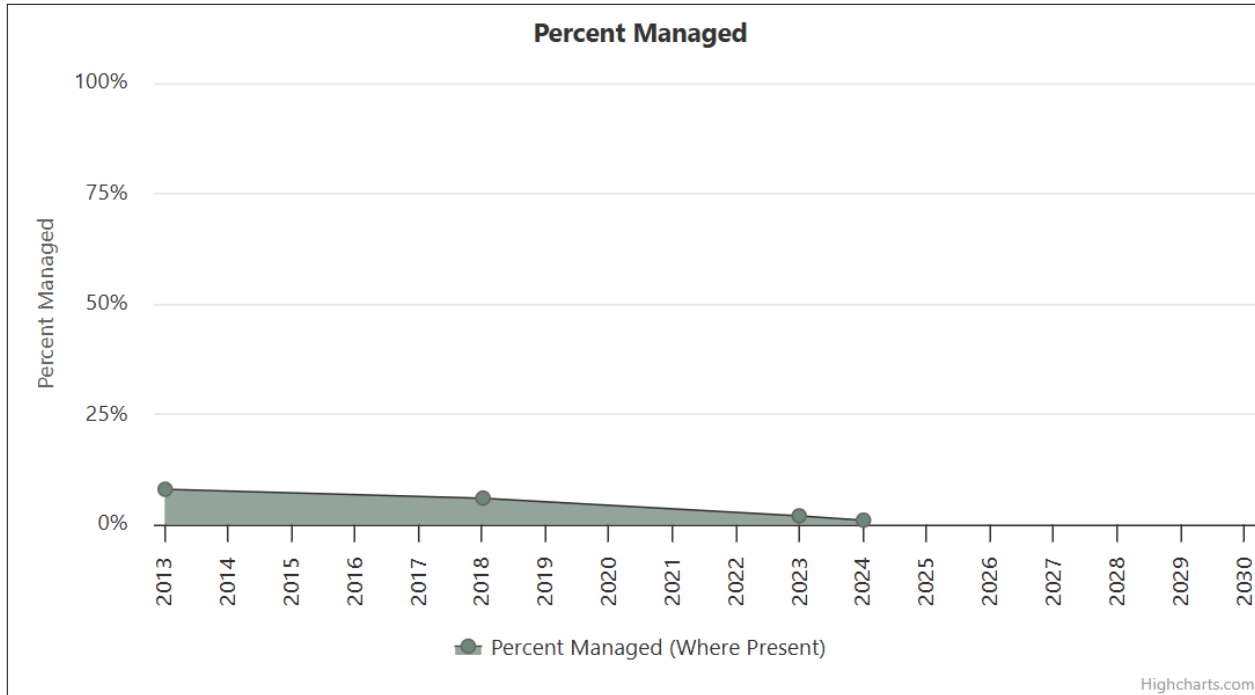
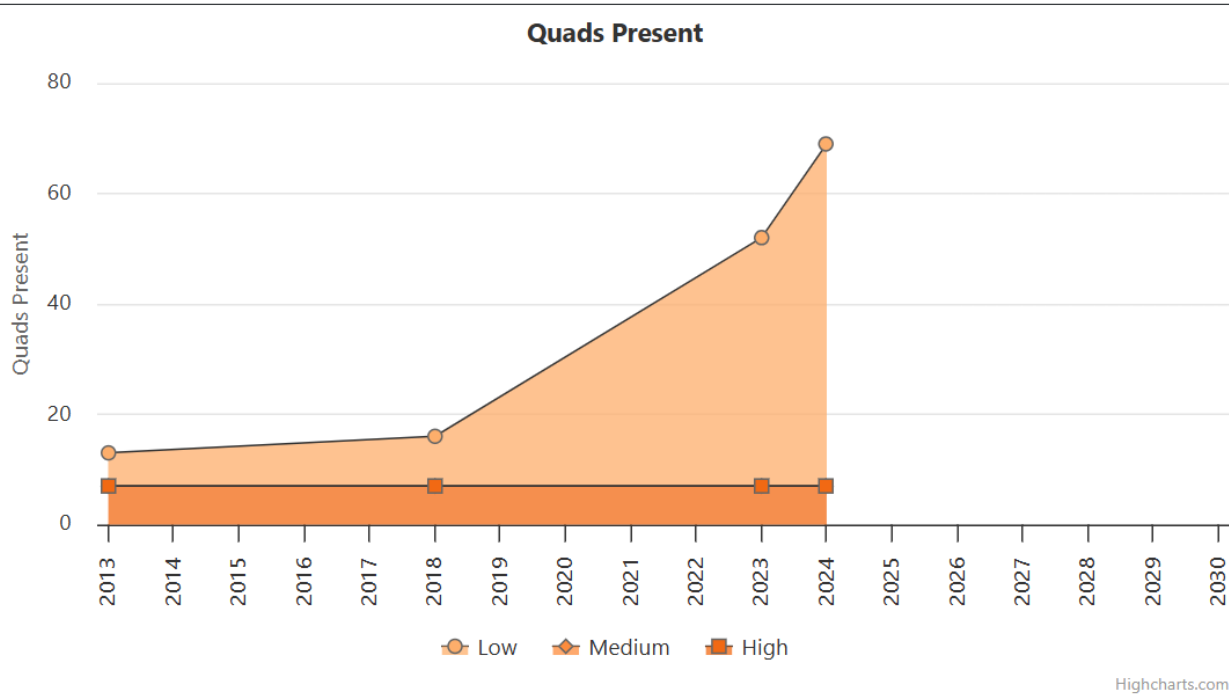
Select a region to show charts for your chosen subregion. That selection will be highlighted on the map and table.

Ventura WMA

x



Santa Ana River/Orange WMA Planning Region Species of Concern

[illegible]

30x30 alignment

AB 900 passed this fall, requiring the state's reporting on progress towards 30x30 to include **stewardship**.

Strategic weed management is a key part of stewardship.

So, if we can report on weed management success, we can make a strong case for continued funding.

Take-home messages

1. Each WMA should try to include regional EDRR work because it is important on the ground; it may have the best ROI.
2. This work – assuming it's well documented – will also help us secure continued funding, which is essential for long-term success.

Thank you!

Doug Johnson, Cal-IPC
dwjohnson@cal-ipc.org

