



Alameda-Contra Costa WMA: IPM and Rebuilding

Wade Finlinson
Contra Costa County IPM Coordinator
Wade.Finlinson@ccchealth.org

Alameda-Contra Costa WMA



- Mostly dormant since 2011
 - Briefly reconvened in 2018, 2019, and 2021
- Previously led by CAC offices
- 30+ partners
- Total land and water area: 1,627 sq. miles
- Population: 2.8 million

Alameda-Contra Costa WMA

- Recent momentum to rebuild
 - Fiscal lead: Alameda County Resource Conservation District (RCD)
 - Draft MOU currently being reviewed by RCD's in Alameda and Contra Costa County as well as both CAC offices.
 - The MOU will simplify the process for adding other key partners.
 - The initial funded projects will expand existing programs.



South American spongeplant (*Limnabium spongia*); photo courtesy Contra Costa County Agriculture Commissioner's office

Projects in Alameda County

- Agriculture, Weights & Measures staff to expand programs focusing on:
 - Treatment of Artichoke Thistle (*Cynara cardunculus*), Purple Starthistle (*Centaurea calcitrapa*), Barb Goatgrass (*Aegilops triuncialis*), and Japanese Dodder (*Cuscuta japonica*).
 - Monitoring of other significant weeds of concern including Russian Knapweed, Rush Skeletonweed, Silverleaf Nightshade, Hoary Cress, and other early detection species.



Japanese Dodder (*Cuscuta japonica*);
photo courtesy Contra Costa County
Agriculture Commissioner's office

Projects in Contra Costa County



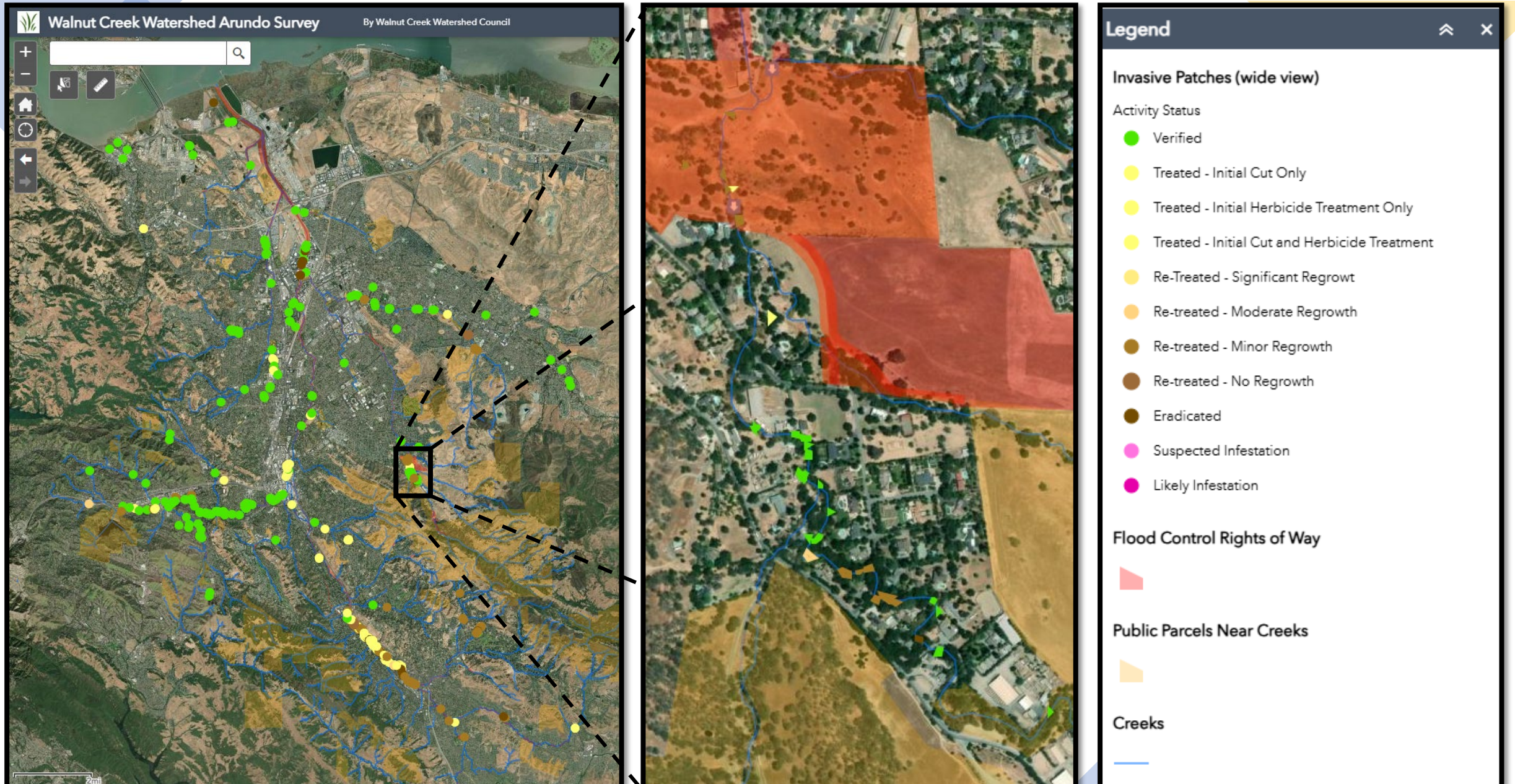
Red Sesbania (*Sesbania punicea*); photo courtesy
Contra Costa County Agriculture Commissioner's office



- Contra Costa RCD to support the expansion of a program to control *Arundo donax*.
- New CDFA funding will partially cover EcoStewards positions to build on the efforts of local partners from the Friends of San Ramon Creek.



Giant Reed *Arundo donax*; photo courtesy Friends of San Ramon Creek



Central tenets of IPM:

- Education
- Prevention
- Monitoring
- Treatment Thresholds
- Multiple Tactics
- Integration
- Evaluation



Japanese knotweed (*Fallopia japonica*); photo courtesy
Contra Costa County Agriculture Commissioner's office

Central tenets of IPM:

- Education
- Prevention
- Monitoring
- Treatment Thresholds
- Multiple Tactics
- Integration
- Evaluation



Central tenets of IPM:

- Education
- **Prevention**
- Monitoring
- Treatment Thresholds
- Multiple Tactics
- Integration
- Evaluation

Coordination **EDRR**
Planning
Ecological Context **Site Hygiene**
Long-term Solutions

Central tenets of IPM:

- Education
- Prevention
- **Monitoring**
- Treatment Thresholds
- Multiple Tactics
- Integration
- Evaluation

Calflora

Remote Methods

Continuity

Citizen Science

Mapping

Historic Pressures

Communication

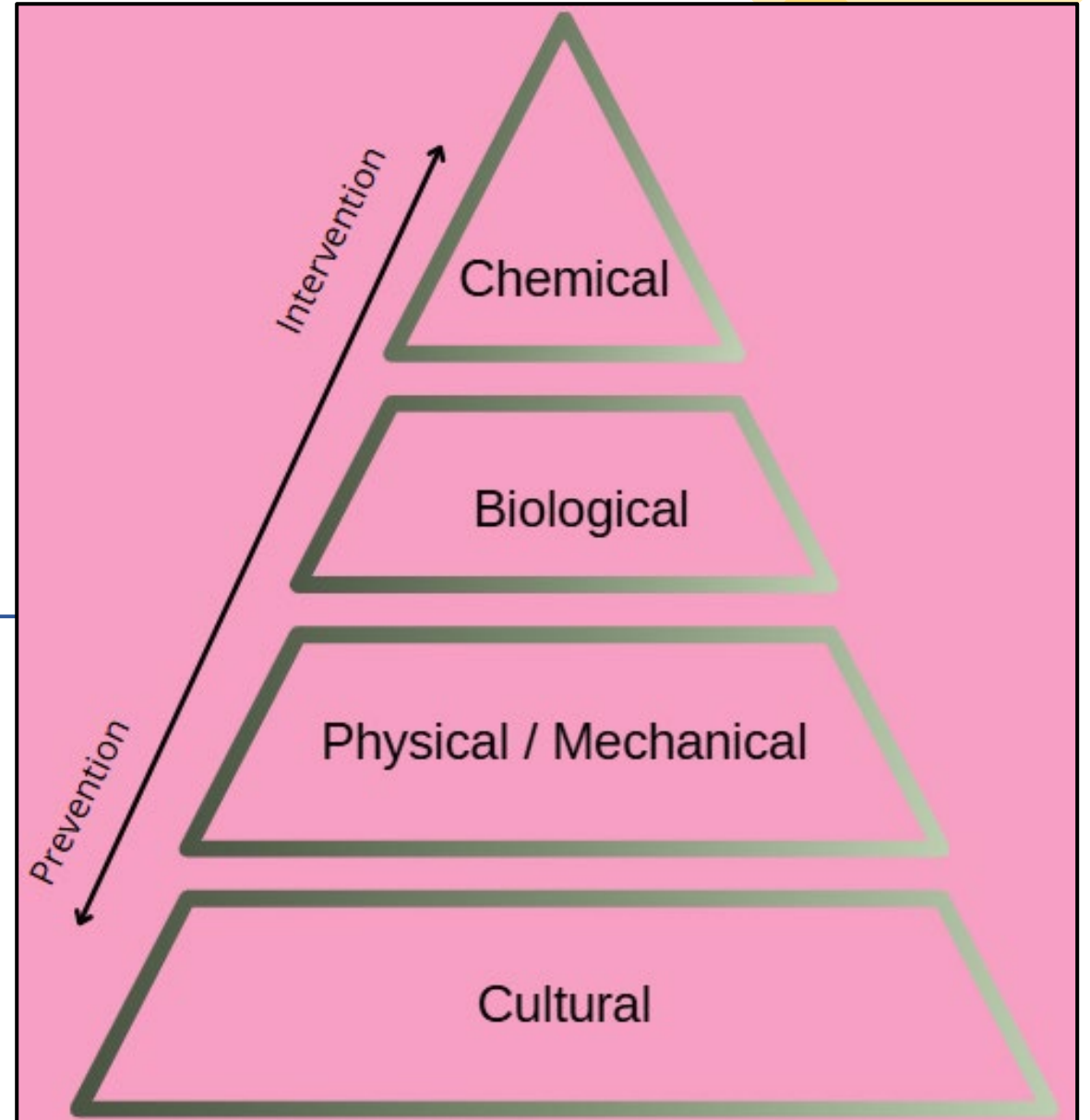
Central tenets of IPM:

- Education
- Prevention
- Monitoring
- **Treatment Thresholds**
- Multiple Tactics
- Integration
- Evaluation

CEQA Status
Prioritization Environmental
Economic
Action Guidelines Capacity

Central tenets of IPM:

- Education
- Prevention
- Monitoring
- Treatment Thresholds
- **Multiple Tactics**
- Integration
- Evaluation



IPM Pyramid, courtesy Constance Taylor, Cal-IPC

Central tenets of IPM:

- Education
- Prevention
- Monitoring
- Treatment Thresholds
- Multiple Tactics
- Integration
- Evaluation



Policy
Leadership Cross-functional
Interdisciplinary **Innovation**
Buy-in
Advocacy

Central tenets of IPM:

- Education
- Prevention
- Monitoring
- Treatment Thresholds
- Multiple Tactics
- Integration
- Evaluation

Operational Weeding

Measuring Outcomes

Quality Assurance

Partner Engagement Tracking Objectives

Refinement

Thank you!

Wade Finlinson
Contra Costa County IPM Coordinator
Wade.Finlinson@cchealth.org



Tree-of-Heaven (*Ailanthus altissima*); photo courtesy Contra Costa County Agriculture Commissioner's office