



Early Detection
Rapid
Response(EDRR)
+ Education

John Regan Beall



Next Ventura WMA Meeting
Thursday December 11th
1 to 3 pm
Ventura Agriculture/Weights & Measures
555 Airport Way Camarillo

- WMA 2004-2015 Revived 2019
- Ventura County Department of Agriculture/Weights & Measures connected to CDFA for funding/fiscal contact
- CEQA-Not complete for CDFA WMA grant. CEQA for EDRR weeds easier than more common weeds-less impact
- Meetings: Hybrid-Four times/year
- Also-"Picnic in the Weeds"
 - Educational weed management presentations
 - Updates from members to share
 - New Weed Detections

Relatively Simple MOU-2014

Interested in replacing with revised standardized WMA MOU developed by CDFA (?).

Current Ventura WMA Members-signed MOU

RA Atmore and Sons Inc.
Channel Islands Restoration
UC Cooperative Extension
California Conservation Corps-Camarillo Center
Ventura County Agricultural Commissioner's Office
Friends of the Santa Clara River
Santa Clara River Conservancy
Ventura County RCD
The Crew
Ventura Land Trust
Ojai Valley Land Conservancy
US Forest Service Los Padres N.F.



CDFA/Cal-IPC South Coast (LA/Ventura)EDRR Project

CAC Regional Target	WMA Regional Target	Species	Common Name	%Qs Region	#Qs Region	#Qs LA	#Qs Ventura	CDFA Rating	Cal-IPC Rating
Containment	Containment	Halogeton glomeratus	halogeton	4%	4	4	0	B	Moderate
Containment	Containment	Linaria dalmatica	dalmatian toadflax	4%	5	3	5	W	Moderate
Containment	Containment	Onopordum acanthium	Scotch thistle	6%	7	0	7	W	High
Containment	Containment	Centaurea maculosa	spotted knapweed	10%	11	6	7	W	High
Containment	Containment	Pancratium maritimum	sea daisy	1%	1	0	1	-	-
Containment	Control	Alternanthera philoxeroides	alligatorweed	9%	10	9	1	A	High
Containment	Control	Aegilops cylindrica	goat grass	2%	2	1	1	W	Watch
Containment	Control	Carthamus lanatus	woolly distaff thistle	2%	2	2	0	W	High
Containment	Control	Chondrilla juncea	skeleton weed	7%	8	6	3	W	Moderate
Control	Control	Araujia sericifera	bladderflower	2%	2	0	2	W	Watch
Control	Control	Acroptilon repens	Russian knapweed	23%	26	11	18	W	Moderate
Control	Control	Centaurea solstitialis	yellow starthistle	54%	61	31	41	W	High
Control	Control	Arundo donax	giant reed	58%	66	48	26	W	High
Control	Control	Spartium junceum	Spanish broom	60%	68	53	25	W	High
Control	Partial Control	Euphorbia terracina	carnation spurge	22%	25	19	9	W	Limited
Control	Partial Control	Ricinus communis	castor bean	48%	55	39	22	-	Limited
	Control	Delairea odorata	Cape-ivy	24%	27	19	10	W	High
	Partial Control	Tamarix aphylla	athel	14%	16	14	8	B	Limited
	Partial Control	Ailanthus altissima	tree-of-heaven	59%	67	50	24	C-W	Moderate
	Partial Control	Salsola tragus	Russian thistle	83%	95	73	32	C-W	Limited
	Partial Control	Tamarix parviflora	smallflower tamarisk	14%	16	8	11	W	High
	Partial Control	Cytisus scoparius	Scotch broom	18%	21	11	15	W	High
	Partial Control	Lepidium chalepense	lens-podded hoary cress	19%	22	15	9	W	Moderate

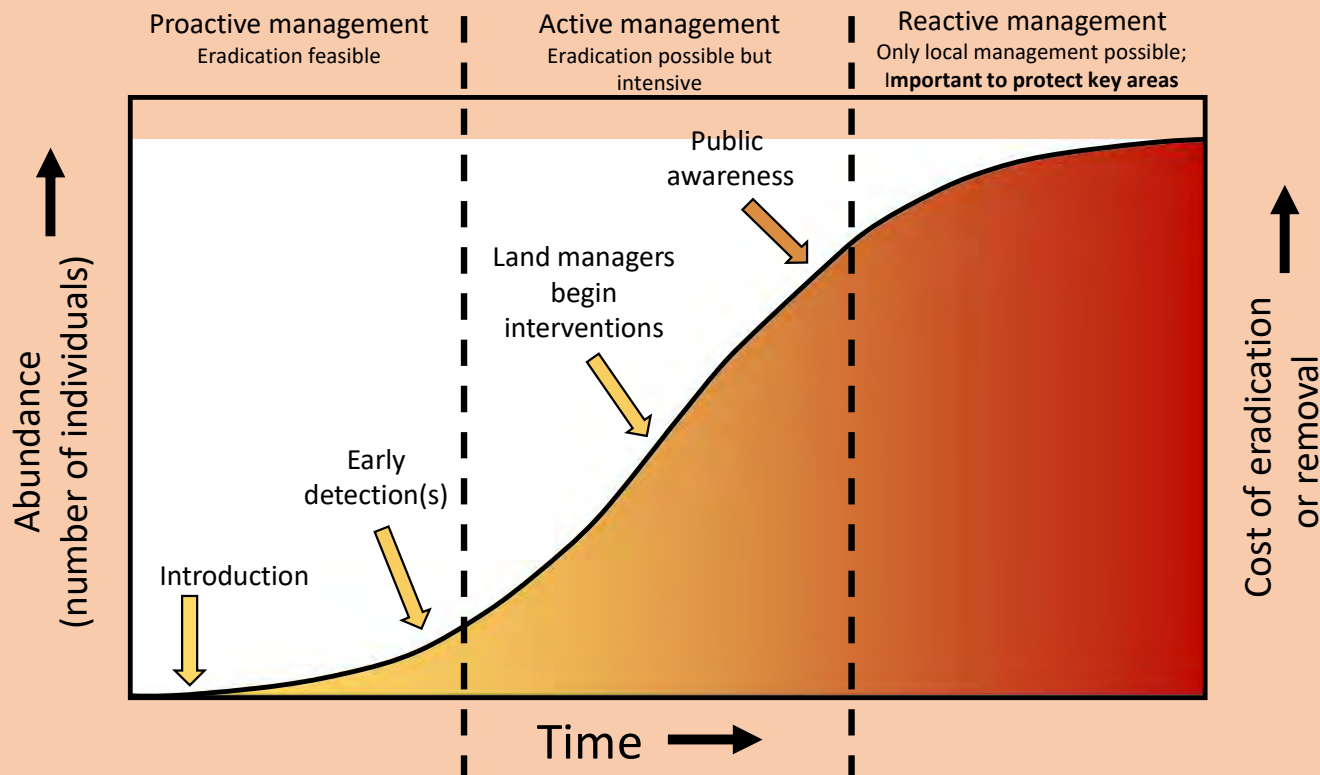


EDRR

Priority Species

- Scotch Thistle *Onopordum acanthium* CDFA A rated- One Location-1/8th acre-**Private Landowner**
- Spotted Knapweed *Centaurea stoebe* CDFA A rated-Two Locations-1/100th acre (**Not found 2025**) **USFS-Los Padres-Large infestation at Pine Mountain Club-Kern Co.-**
- Dalmation Toadflax *Linaria dalmatica* CDFA A rated-One large Area-**Hungry Valley SVRA/2 LPNF**
- Sea Daisy *Pancratium maritimum* CDFA Q rated-Three Locations 1/8th acre **CA State Parks**
- Creeping groundsel *Senecio angulatus* CDFA Q rated-One Location-1/8th acre **Private Landowner**
- Tropical Pokeweed *Phytolacca icosandra* CDFA Q rated-Three Locations 1/8th acre **Private Landowners**
- Horned Poppy *Glaucium flavum* CDFA Q rated-5-10 small locations 1/8th acre **CA State Parks**
- Globe Chamomile *Oncosiphon piluliferum* CDFA Q rated-Many Locations-1/2 acre+ **Private Landowners/other**
- Skeletonweed *Chondrilla juncea* CDFA 4500 Noxious Weed-One Locations-1/2-acre-**Santa Monica NRA**

Priority EDRR weeds are determined by CDFA rating, area, number of locations and likelihood of eradication or containment (to limit spread). Priority ranking of each EDRR weed may change year to year as more locations are mapped or new CDFA “A” or “Q” rated weeds are found.



House of Representatives

January 1859.

Day	Month	Year	Hour	Minute	Second	Latitude	Longitude	Altitude	Barometer	Thermometer	Wind	Direction	Force	State	Remarks
1	Jan	1859	5:45	12	55	36.2	122.5	1000	30.0	55.0	W	10	10	10	Overcast
2	Jan	1859	5:45	12	55	36.2	122.5	1000	30.0	55.0	W	10	10	10	Overcast
3	Jan	1859	5:45	12	55	36.2	122.5	1000	30.0	55.0	W	10	10	10	Overcast
4	Jan	1859	5:45	12	55	36.2	122.5	1000	30.0	55.0	W	10	10	10	Overcast
5	Jan	1859	5:45	12	55	36.2	122.5	1000	30.0	55.0	W	10	10	10	Overcast
6	Jan	1859	5:45	12	55	36.2	122.5	1000	30.0	55.0	W	10	10	10	Overcast
7	Jan	1859	5:45	12	55	36.2	122.5	1000	30.0	55.0	W	10	10	10	Overcast
8	Jan	1859	5:45	12	55	36.2	122.5	1000	30.0	55.0	W	10	10	10	Overcast
9	Jan	1859	5:45	12	55	36.2	122.5	1000	30.0	55.0	W	10	10	10	Overcast
10	Jan	1859	5:45	12	55	36.2	122.5	1000	30.0	55.0	W	10	10	10	Overcast
11	Jan	1859	5:45	12	55	36.2	122.5	1000	30.0	55.0	W	10	10	10	Overcast
12	Jan	1859	5:45	12	55	36.2	122.5	1000	30.0	55.0	W	10	10	10	Overcast
13	Jan	1859	5:45	12	55	36.2	122.5	1000	30.0	55.0	W	10	10	10	Overcast
14	Jan	1859	5:45	12	55	36.2	122.5	1000	30.0	55.0	W	10	10	10	Overcast
15	Jan	1859	5:45	12	55	36.2	122.5	1000	30.0	55.0	W	10	10	10	Overcast
16	Jan	1859	5:45	12	55	36.2	122.5	1000	30.0	55.0	W	10	10	10	Overcast
17	Jan	1859	5:45	12	55	36.2	122.5	1000	30.0	55.0	W	10	10	10	Overcast
18	Jan	1859	5:45	12	55	36.2	122.5	1000	30.0	55.0	W	10	10	10	Overcast
19	Jan	1859	5:45	12	55	36.2	122.5	1000	30.0	55.0	W	10	10	10	Overcast
20	Jan	1859	5:45	12	55	36.2	122.5	1000	30.0	55.0	W	10	10	10	Overcast
21	Jan	1859	5:45	12	55	36.2	122.5	1000	30.0	55.0	W	10	10	10	Overcast
22	Jan	1859	5:45	12	55	36.2	122.5	1000	30.0	55.0	W	10	10	10	Overcast
23	Jan	1859	5:45	12	55	36.2	122.5	1000	30.0	55.0	W	10	10	10	Overcast
24	Jan	1859	5:45	12	55	36.2	122.5	1000	30.0	55.0	W	10	10	10	Overcast
25	Jan	1859	5:45	12	55	36.2	122.5	1000	30.0	55.0	W	10	10	10	Overcast
26	Jan	1859	5:45	12	55	36.2	122.5	1000	30.0	55.0	W	10	10	10	Overcast
27	Jan	1859	5:45	12	55	36.2	122.5	1000	30.0	55.0	W	10	10	10	Overcast
28	Jan	1859	5:45	12	55	36.2	122.5	1000	30.0	55.0	W	10	10	10	Overcast
29	Jan	1859	5:45	12	55	36.2	122.5	1000	30.0	55.0	W	10	10	10	Overcast
30	Jan	1859	5:45	12	55	36.2	122.5	1000	30.0	55.0	W	10	10	10	Overcast

Citizen Science has a long history

Science conducted all or in part by nonprofessional scientists

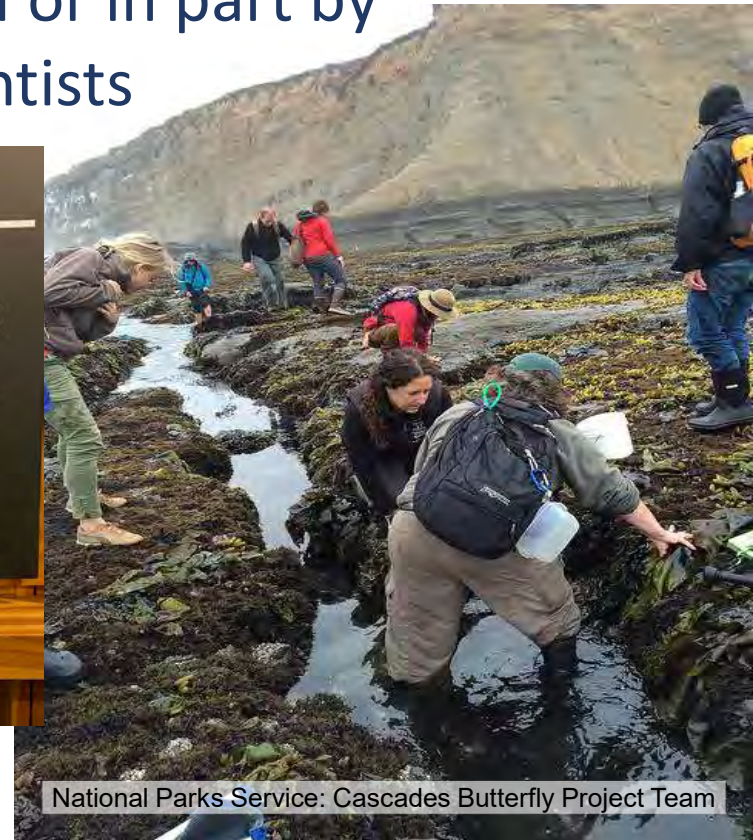
Can Involve:

Data collection

-Data processing

Analysis

-Advocacy and policy work



National Parks Service: Cascades Butterfly Project Team

Using to find new invasives:



We encourage the use of iNaturalist plant observations by the public. It acts as a net for finding new and uncommon invasive species. We **created an iNaturalist Project** for capturing CDFA “A” rated weeds. New/“Q” rated weeds are also found.



WMA members verify finds (online and in the field) then move observations to Calflora.



Continuous Mapping verified finds helps us prioritize invasives for eradication or containment.

Using iNaturalist

There are many ways to engage with iNaturalist:



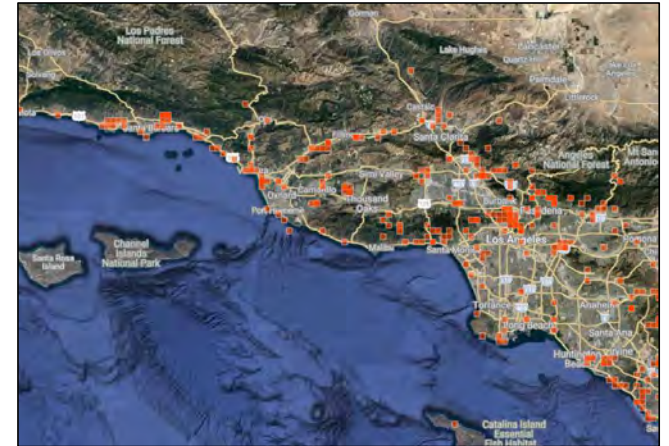
Adding your own
observations

Easiest via phone apps
(but doable on website)



Confirming IDs for
others

Done on website



Using the data manage
plants-native & non-native

Done on website

Tips for collecting observations using phone camera:

- Add multiple photos
 - From different angles
 - Of different parts-include flowers and fruits
 - Take a “habitat” photo – the organism “in context”
 - Take 1 good shot of whole plant with no other plants
- Take good in-focus photos-if bad delete-retake
- Mark landscape/cultivated organisms
- Stay at Genus level if not sure (Eriogonum, etc.)
- Other iNaturalist folks make ID corrections-no hard feelings
- Don't forget to upload when you get home





Ventura County WMA partners collaborate in the removal of EDRR Weeds
We notify each other of finds and support each other with
survey/mapping, getting funding and doing the work.
The CDFA EDRR Grant will pay for a contractor to do EDRR removal.



Join California State Parks and Ventura County WMA for a...

PANCRATIUM PULL!



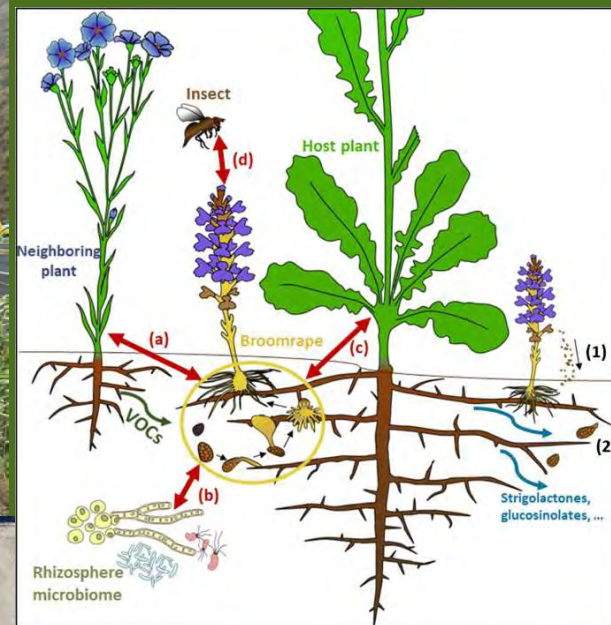
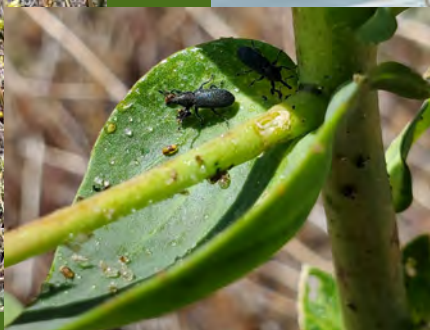
JOIN US IN
DIGGING OUT
PANCRATIUM
MARITIMUM
WEEDS WHILE
ENJOYING THE
COASTAL VIEWS!

OCTOBER 21, 2025 | 1:00 - 3:00 PM
SAN BUENAVENTURA STATE BEACH

Email Brittney Sheets at Brittney.Sheets@parks.ca.gov to secure your spot. Participation is limited.

All tools provided. Please bring water and sun protection.

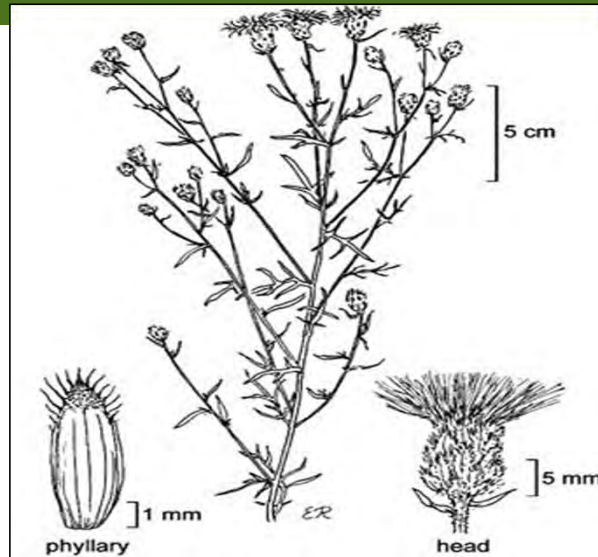




Some EDRR Species in Ventura County



Spotted knapweed- *Centaurea stoebe*



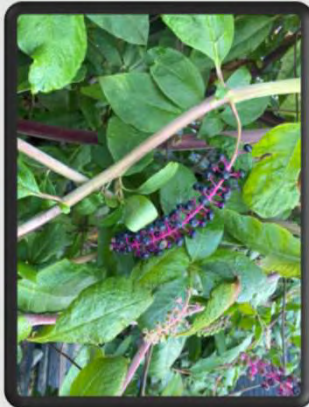
Creeping Groundsel *Senecio angulatus*



- *USDA Weed Risk Assessment 2013*
- “*Senecio angulatus* is native to South Africa has demonstrated an ability to escape, naturalize, and spread in several other countries”

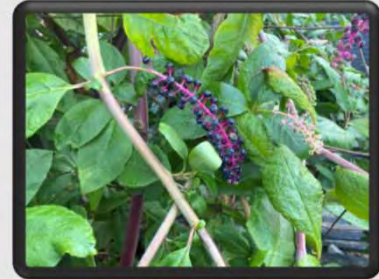
Tropical Pokeweed *Phytolacca icosandra*

- Seeds are closer in proximity to one another
- Seeds display erect from plants
- Green Stems
- Hardier stems



American Pokeweed *Phytolacca americana*

- Seeds are spaced out in proximity to one another
- Seeds hang/droop from plants
- Pink/Magenta stems
- Less hardy in stems

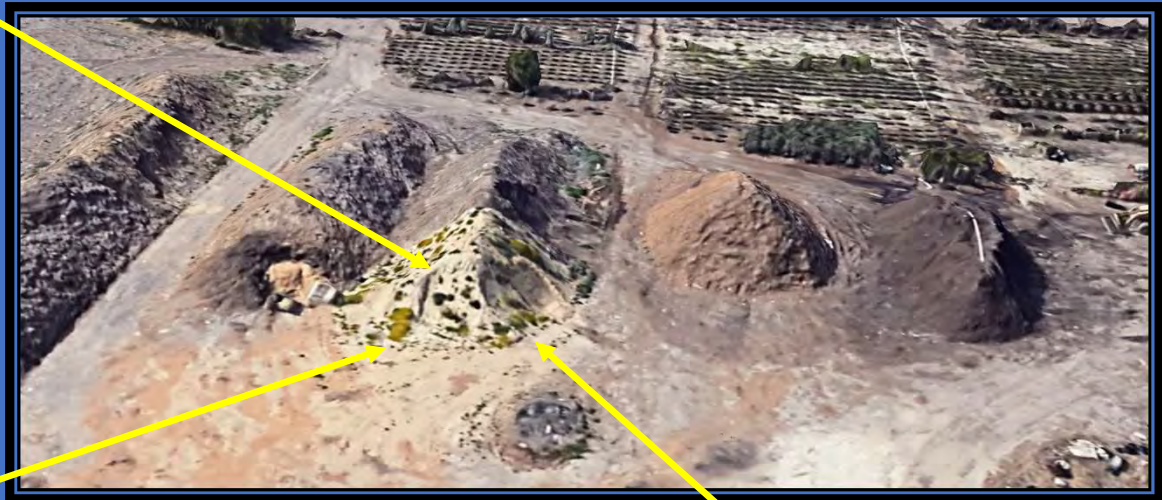


Stinknet- *Oncosiphon pilulifer*



Initial Sighting

- Stinknet discovered in a mulch pile in Moorpark
- One of few sightings in Ventura County

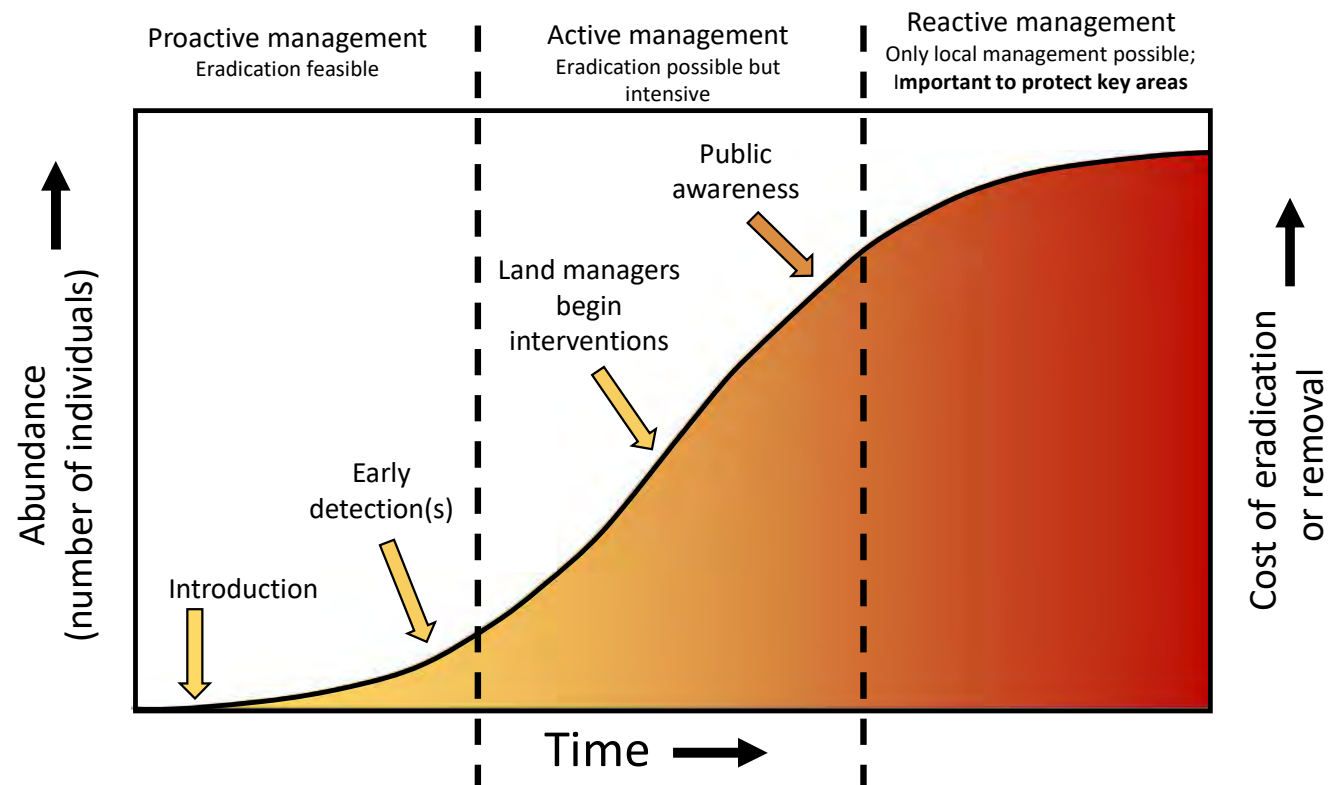


Mulch pile has been quarantined after discovery
Plants treated and nursery surveyed



Management of more common Invasive Weeds

- CDFA WMA Grant-Arundo rapid response after fire
- Grazing
- Mowing
- Biocontrol
- Herbicide
- Other Methods





Russian Knapweed *Rhaponticum repens*



Photo by ronvanderhoff, seen in Southern California in 2019

Carnation Spurge *Euphorbia terracina*



Education

**Invasive species are a
major threat to biodiversity, agriculture and fire safety**



The worst invaders take over, pushing out native species and degrading habitat.



WMA Wildflower & Weed Show (with CNPS Plant Sale)

Stop to see & smell the flowers
Learn about native plants in Ventura County
Then-Protect & Restore!





Fifth Wildflower & Weed Show Saturday April 11th 2026 Santa Paula





- **Next Ventura WMA Meeting
Thursday December 11th**

- **1 to 3 pm**

Ventura Agriculture/Weights & Measures

555 Airport Way Camarillo

john.beall@venturacounty.gov