



# Suppression and Planning Actions for Restoring Communities and Species in the southern California Ecoregion

## Educational Materials for Sensitive Resources

3x5in laminated flashcards and Incident Action Plan Resource pages showing important information on resources that are highly sensitive to impacts from suppression activities, including invasive plants spreading from crews and heavy equipment. These materials show the best identifying features for each resource, a brief description, a simple map, and suppression tactic limitations and recommendations.

**Rare Species:**  
**Tecate Cypress**  
Consult with READ

**Description:** Multi-trunked shrub to tree, < 30 feet tall. Smooth, grey to cherry-red or mahogany-brown peeling bark. Leaves light to dark green. Small, round, dull gray to brown seed cones.

**Habitat:** Chaparral, riparian vegetation, and Tecate cypress forests in canyon bottoms; stream beds; and north-facing slopes. Uncommon on dry, south-facing slopes.

**Protection:** Avoid heavy equipment in areas supporting Tecate cypress.

**Known Locations**  
California Department of Fish and Wildlife. CNDDB V5.3.0. 2024.

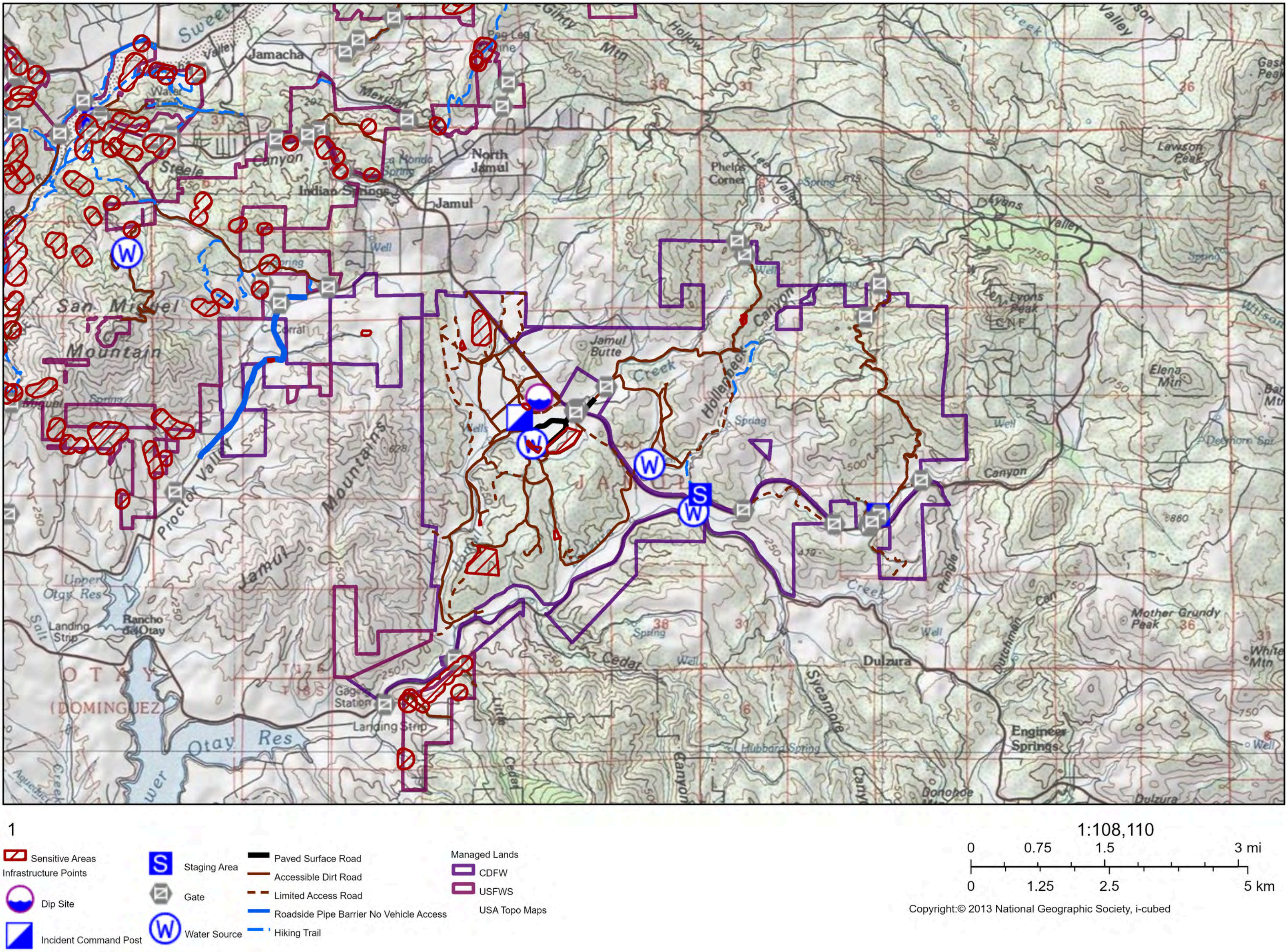


## Program Overview

The USGS Western Ecological Research Center and San Diego Management and Monitoring program are partnering with local fire agencies, land managers, and conservation scientists to enhance wildfire management through proactive solutions to minimize impacts to natural and cultural resource from both fire suppression and fire effects. This collaboration includes agencies throughout the southern California ecoregion, such as BLM, USFWS, NPS, CalFire, the County of San Diego, various NGOs., and more. The key objectives are:

- Regional Database Development and Management:
  - Creation and management of two databases: one mapping infrastructure on conservation lands to support fire suppression efforts, and another identifying ecological and cultural resource avoidance areas. These tools will assist fire managers in minimizing resource damage during suppression and repair activities and reduce the invasion of non-native weeds. Example below.
- Wildland Fire Resource Advisors (READs):
  - Establishment of a local cohort of READs to provide expertise in ecologically sound fire suppression and repair tactics. Among many other things, these fire line qualified subject matter experts inform invasive plant management and ecosystem recovery by pinpointing areas most at risk for invasive species establishment after fire and working with land managers to enable targeted monitoring and early intervention.

## Open Space Preserve Infrastructure and Decision Support Database



## Authors and Collaborators

Austin Parker, Robert Fisher PhD., Sarah McCutcheon, Emily Perkins, and Kristine Preston, USGS and San Diego Management and Monitoring Program; James Gannon, Bureau of Land Management; Jessie Vinje, Shawn Stone, SageVinje Biological

