

A nighttime photograph of a coastal city, likely Santa Monica, with the Pacific Ocean in the foreground and the Santa Monica Mountains in the background. The city lights are visible, and the sky is dark with some clouds. The text "Assisting recovery in the Santa Monica Mountains" is overlaid at the top.

Assisting recovery in the Santa Monica Mountains

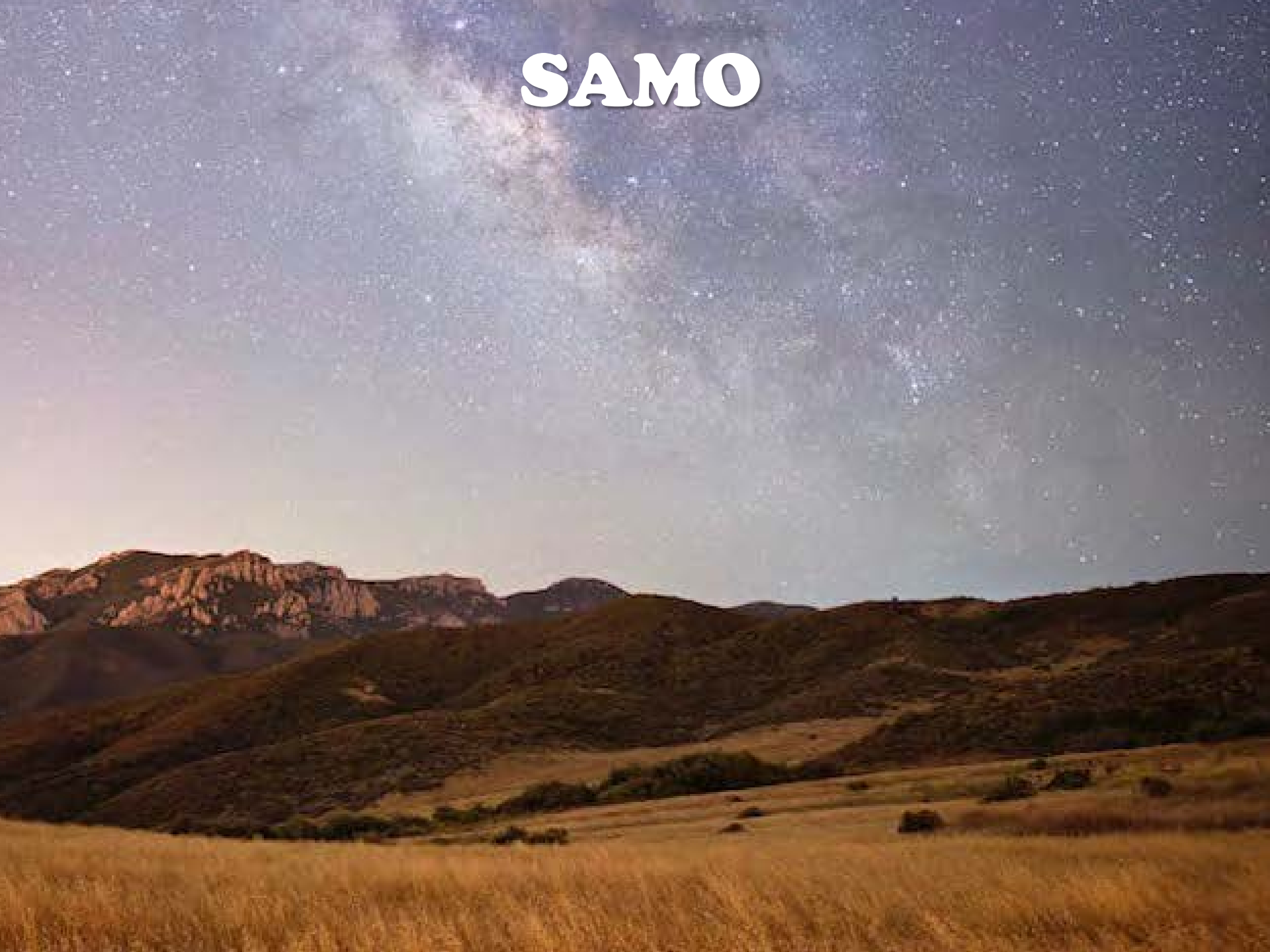
Joey Algiers
Plant Ecologist

Photo by Martin Nate Raymer

Recovery



SAMO



The National Park Service

Santa Monica Mountains National Recreation Area Protected Park Land

National Park Service
U.S. Department of the Interior





***Invasive plant control is the most important component of restoration**

***Successful control of Italian thistle, yellow star thistle, and sweet fennel**



August 2019



2015

Sweet Fennel



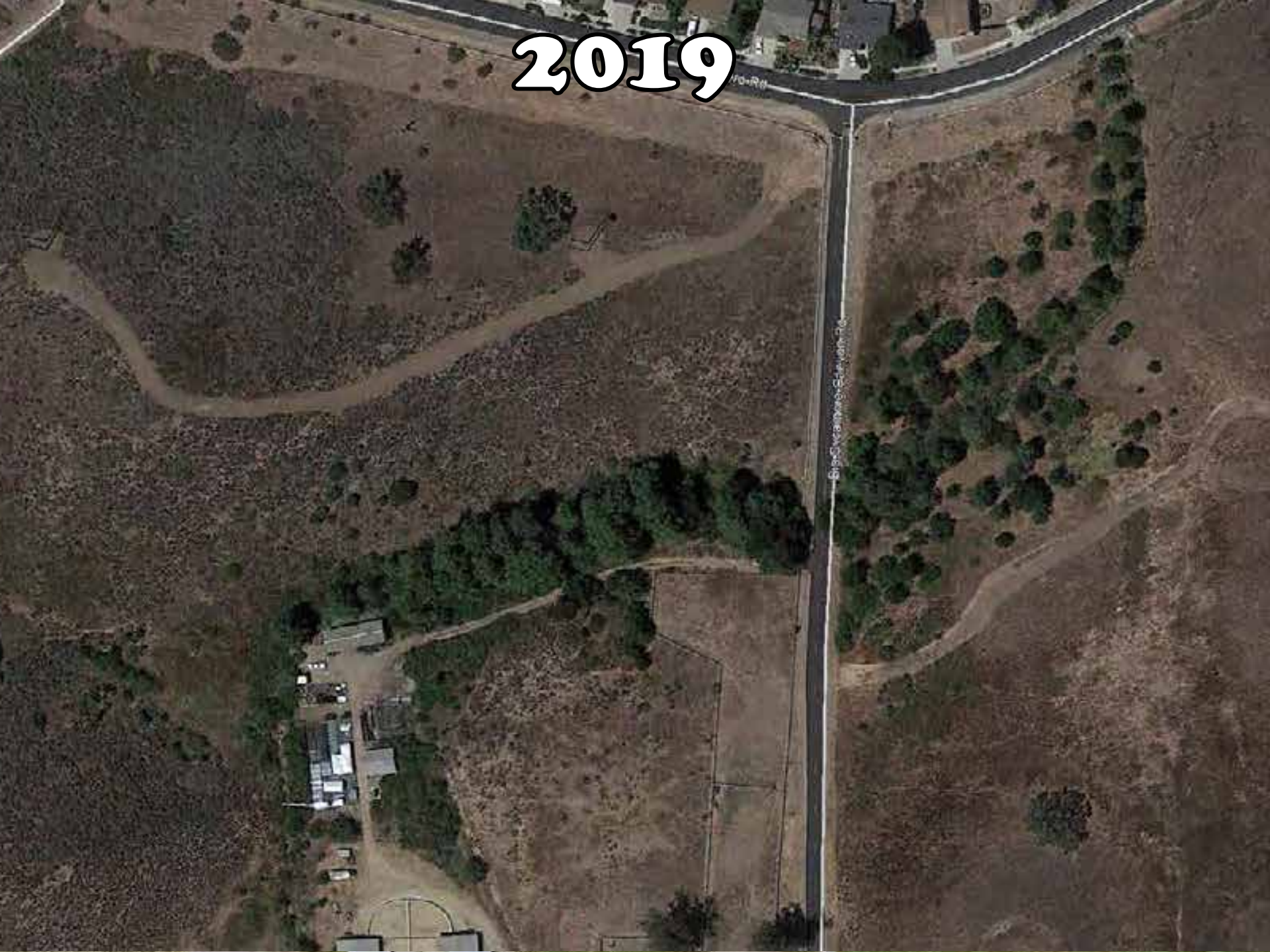
Fuels Replacement

- **Timed Mowing**
- **Early Season and Repeated**
- **Encourages passive recovery**
- **High Live Fuel Moisture**
- **Ignition Reduction**
- **Improved Ecology**





2019



2023



2018 Woolsey Fire



Photo courtesy of National Park Service



RSV Native Plant Nursery

Antonio Sanchez

*** Since 2018 the SAMO Restoration
Program has planted over 200,000
plants.**



[HOME](#)

[ABOUT US](#)

[WHAT WE DO](#)

[GET INVOLVED:](#)

[SHOP](#)

[NEWS](#)

[DONATE](#)

[OUTDOORS CALENDAR](#)



PROTECT THE PLACE THAT INSPIRES YOU

RESTORE. REWILD. REBALANCE

[LEARN MORE](#)

[DONATE NOW](#)

SAMOFUND.ORG

Volunteers



Volunteers





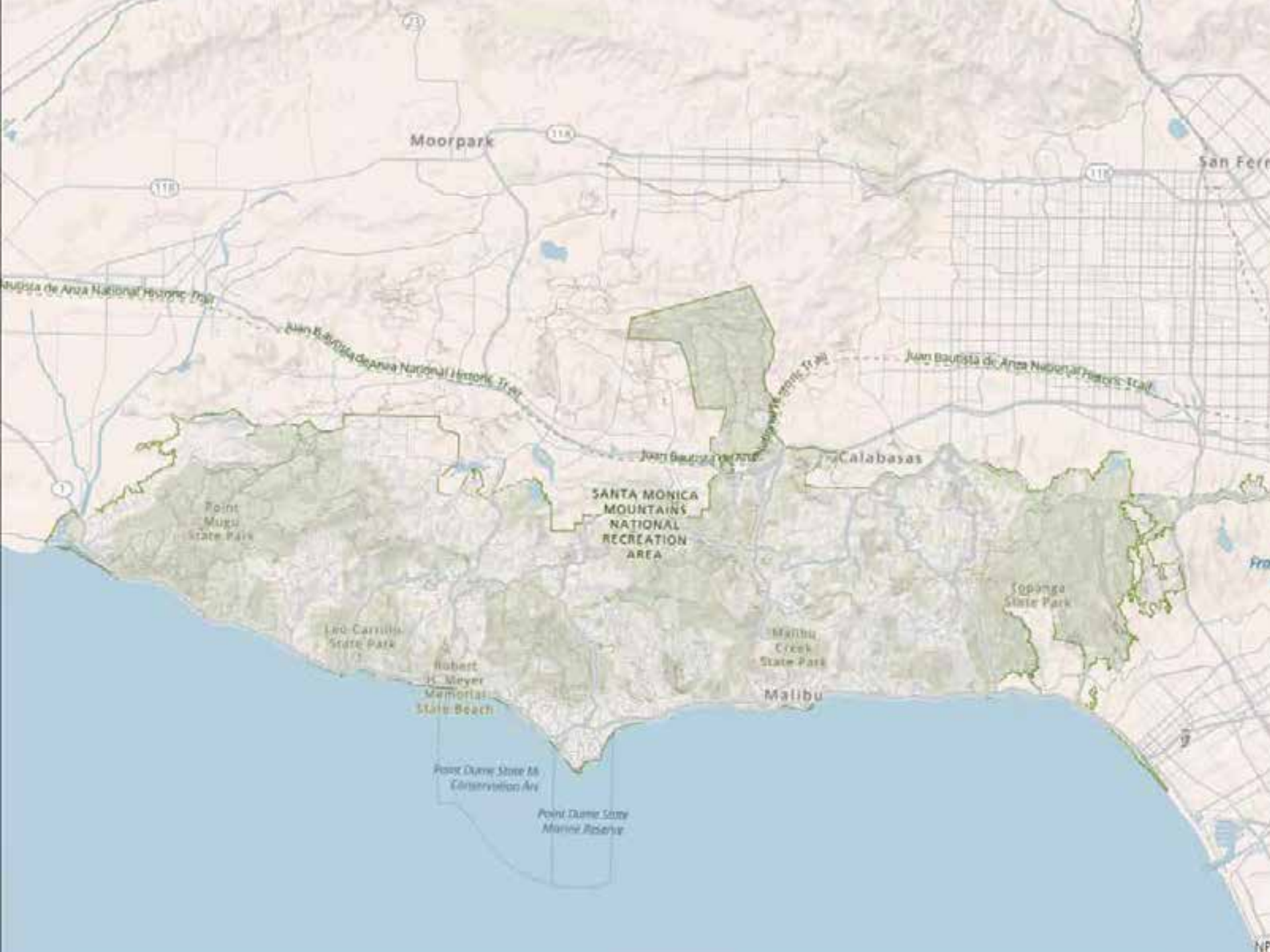


Matt Wells

Unnatural Fire Regime

- **Higher Intensity**
- **Frequent**
- **Santa Ana Winds**





Moorpark

San Fernando

Juan Bautista de Anza National Historic Trail

Juan Bautista de Anza National Historic Trail

Juan Bautista de Anza National Historic Trail

Juan Bautista de Anza National Historic Trail

SANTA MONICA
MOUNTAINS
NATIONAL
RECREATION
AREA

Calabasas

Point
Mugu
State Park

Leo Carrillo
State Park

Robert
H. Meyer
Malibu
State Beach

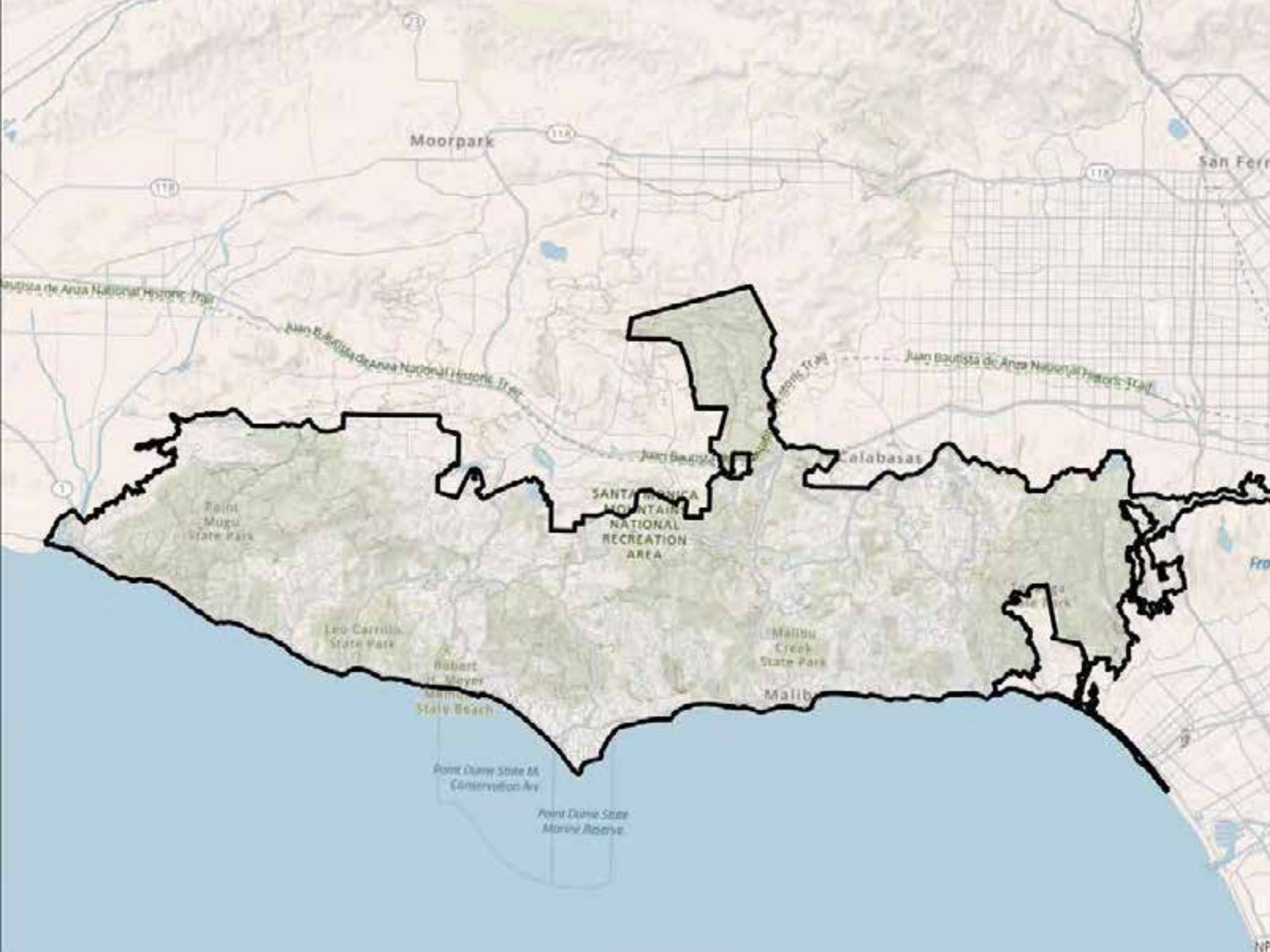
Malibu
Creek
State Park

Malibu

Topanga
State Park

Point Dume State Marine Conservation Area

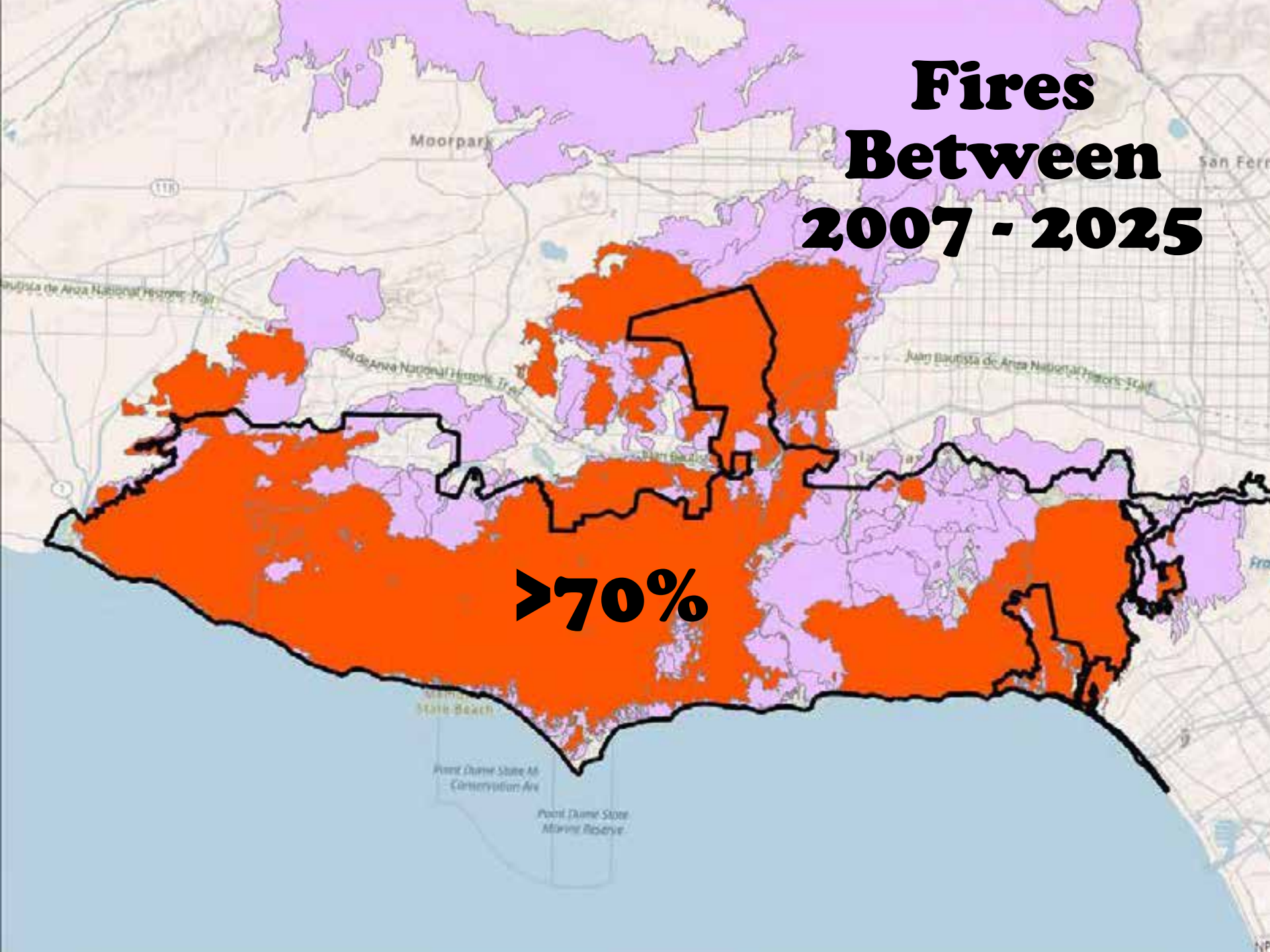
Point Dume State Marine Reserve



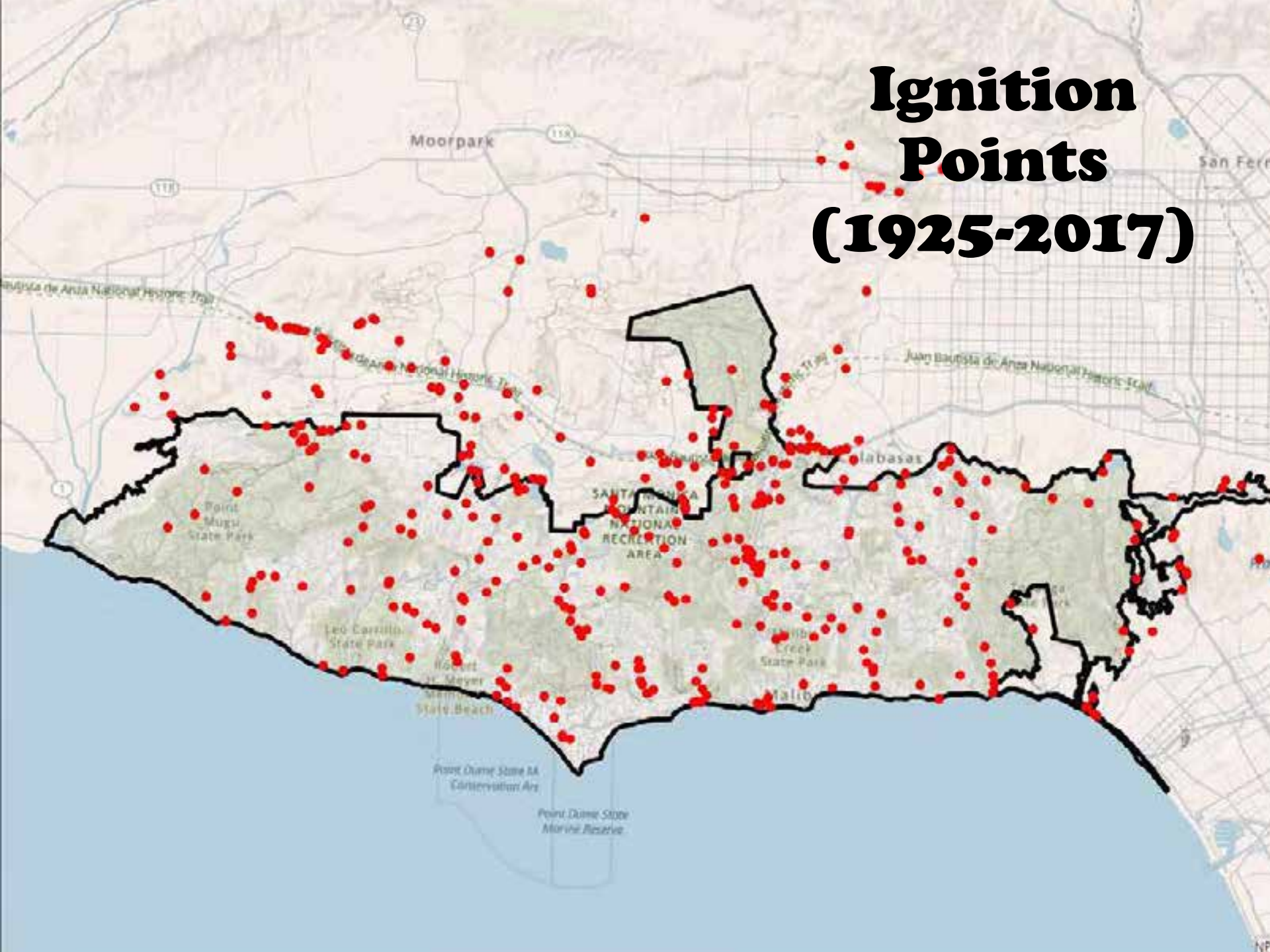
**Fires
Between
1925 - 2025**

Fires Between 2007 - 2025

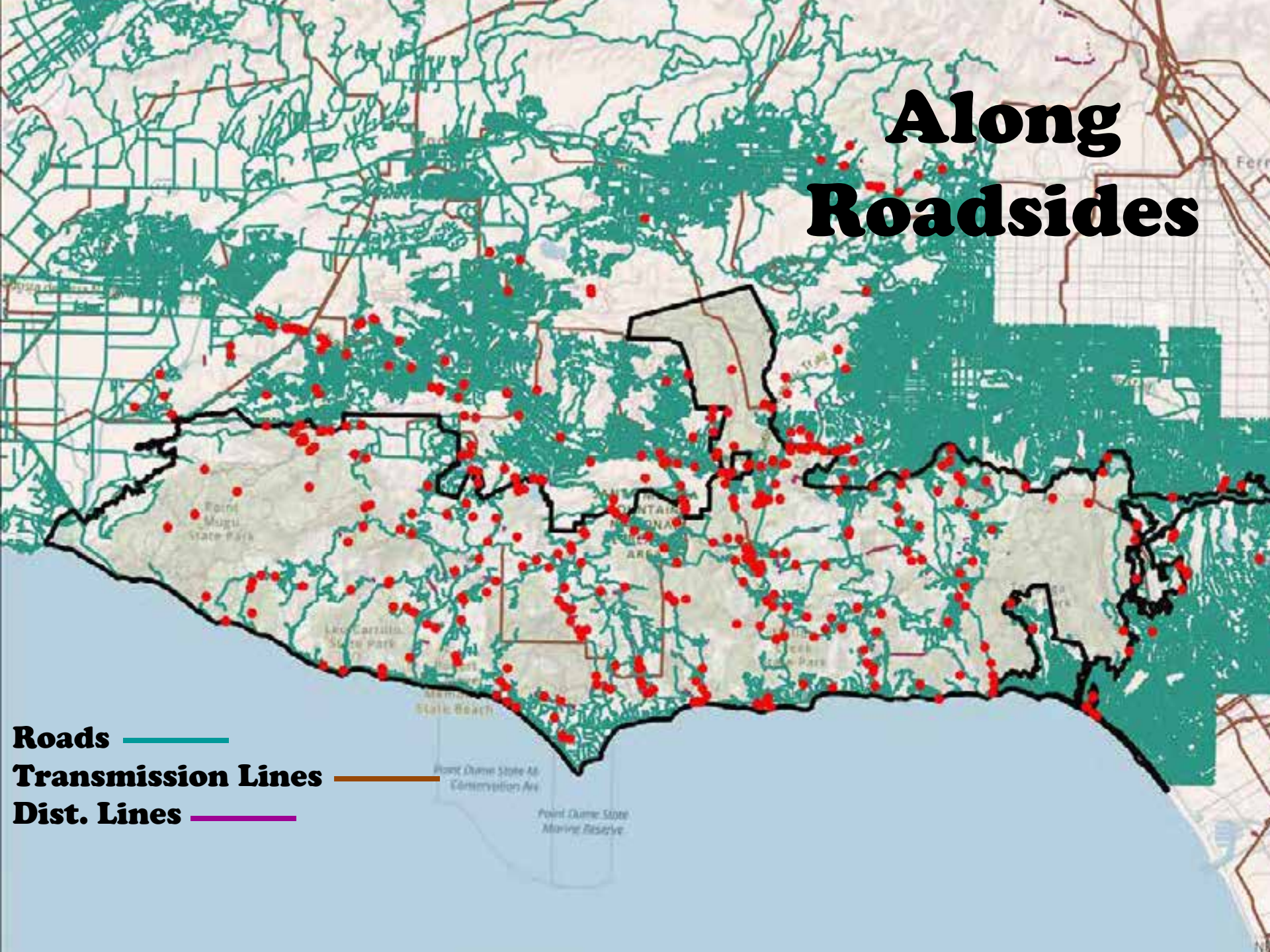
>70%



Ignition Points (1925-2017)



Along Roadsides



Roads ———
Transmission Lines ———
Dist. Lines ———


Human Caused Ignitions

- **Mechanical Equipment**
- **Vehicles**
- **Powerlines**
- **Arson**
- **Illegal campfires**





2011/06/30

- 
- **Promote fire**
 - **Dry out earlier**
 - **Increase fire frequency, unpredictability, and intensity**
 - **Shorten fire return intervals**
 - **Change fire regimes**

2011/8/1 13:12

16-4-44
4.118-01/00-119
4.118-01/18-307

A close-up photograph of a person's hand, wearing a blue long-sleeved shirt, pouring a large quantity of small, light-brown native seeds onto a sandy ground. The seeds are captured mid-air, creating a dynamic sense of movement. The background is a blurred natural landscape with green vegetation and trees under a bright sky.

***Native seed is the only practical way to accomplish large-scale restoration**

***Large-scale reponse to future wildfires and other distrubances**



Tak Chipman



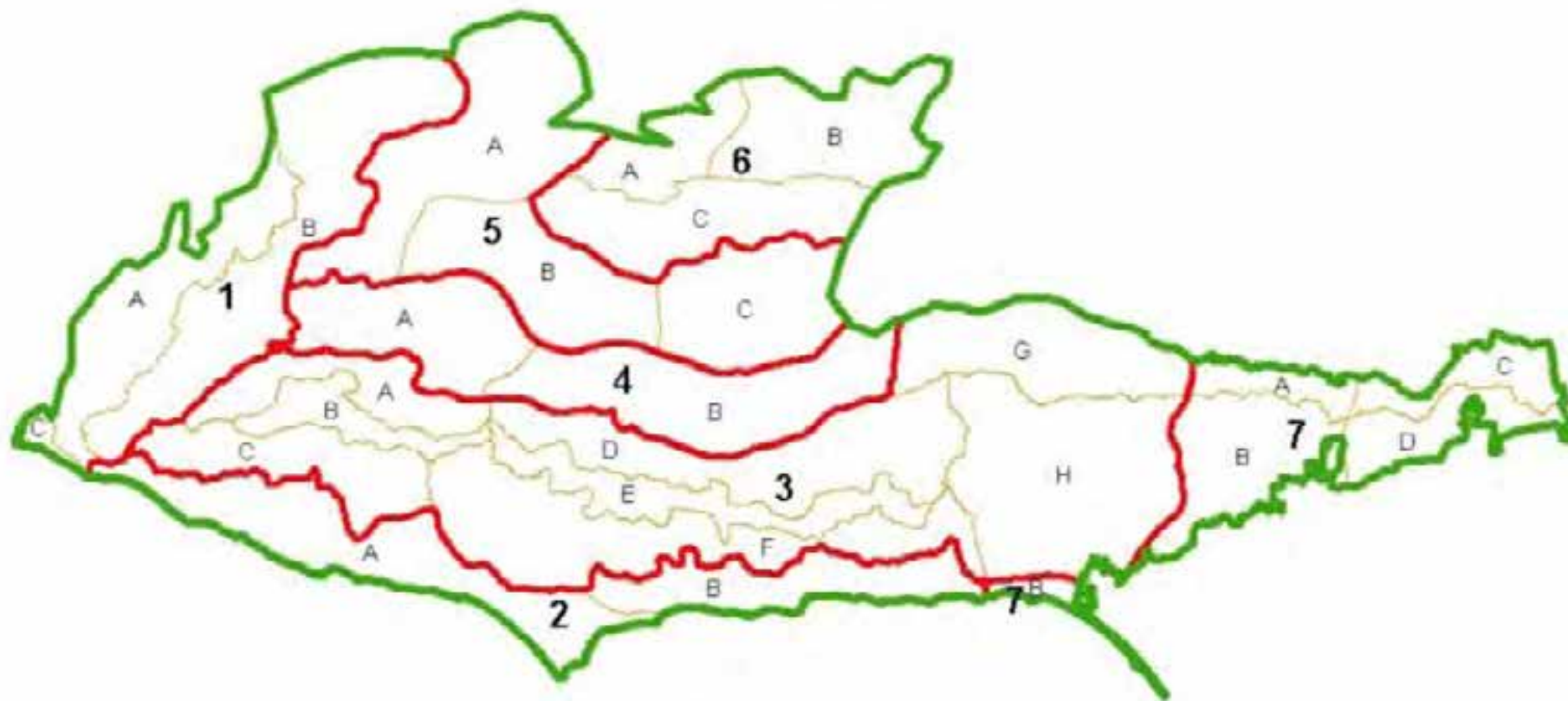
Ben Vizcarra-Barton



Thu Tat



Santa Monica Mountains National Recreation Area Regions and Subregions



Region-Subregion Names

1. The Western Fog Zone

- A. Western Slope Area
- B. Eastern Slope Area
- C. Mugu Marshland Area

2. Immediate Coastal Zone

- A. Western Area
- B. Eastern Area

3. Upper Elevation Zone

- A. Western Regional North Slope Area
- B. Western Regional Crest Area
- C. Western Regional South Slope Area
- D. Central Regional North Slope Area
- E. Central Regional Crest Area
- F. Central Regional South Slope Area
- G. Eastern Regional North Slope Area
- H. Eastern Regional South Slope Area

4. Lower Elevation Inland Zone

- A. Western Area
- B. Eastern Area

5. Inland Dry Zone

- A. Northern Urban Area
- B. Central Urban Area
- C. Eastern Grasslands Area

6. Simi Hills Inland Zone

- A. Regional North Slope Western Area
- B. Regional Northeast Rocky Area
- C. Regional South Slope Area

7. Eastern Urban Zone

- A. Western North Slope Area
- B. Western South Slope Area
- C. Eastern North Slope Area
- D. Eastern South Slope Area



0 6,500 13,000 26,000 Meters

Native Seed Farm



Native Seed Farm



Native Seed Farm



Gumplant

2024 wild collections = 3 gallons

2025 seed farm collections = 150 gallons

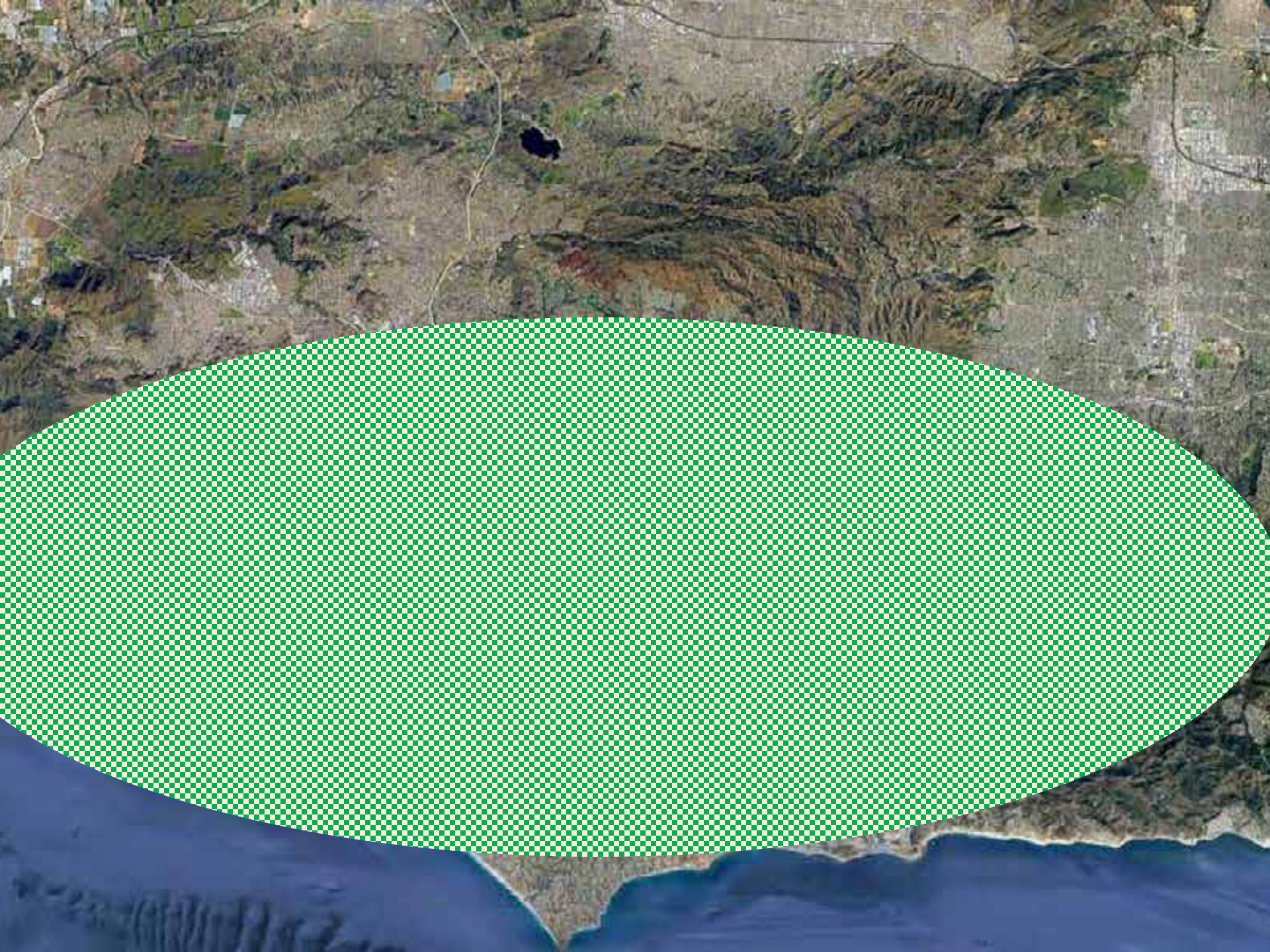
50 times as much seed!!!



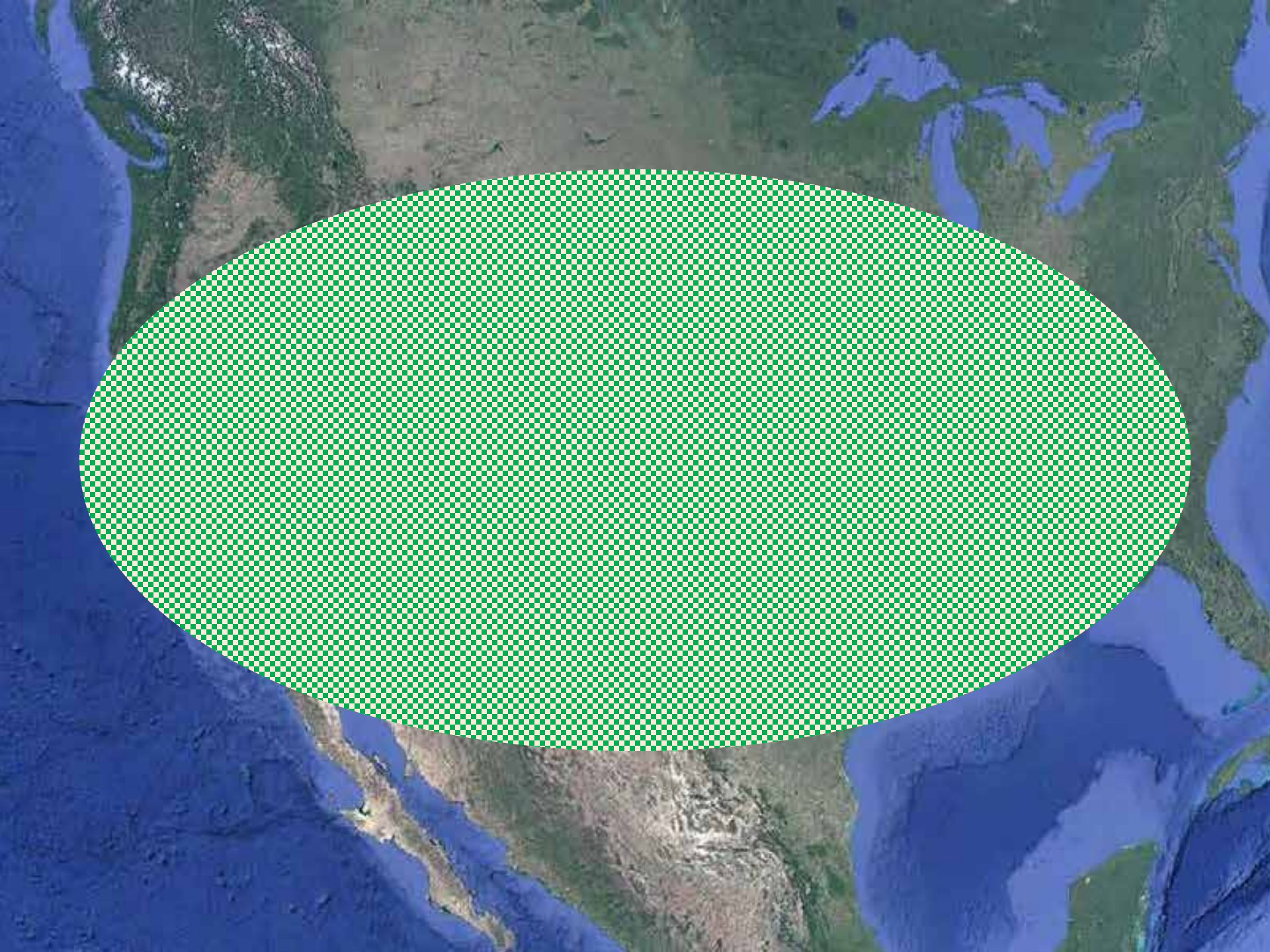


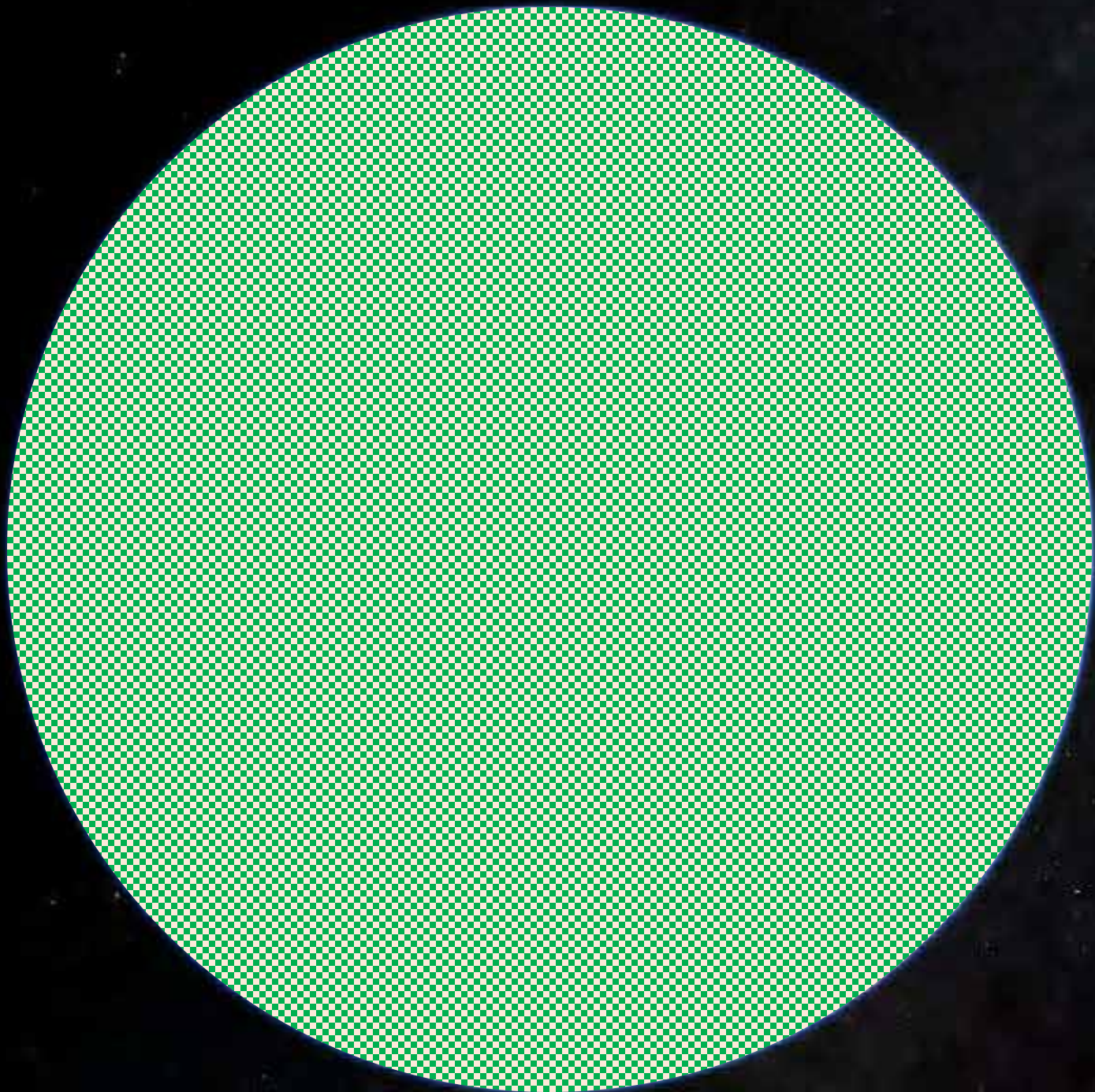














Thank You!
jalgiers@gmail.com

Acknowledgements

Burn Area Emergency Rehabilitation

**Jen Gibson, Nelson Siefkin, Jack Oelfke, Molly
Boyter, Elizabeth Hale, Maren Watkins**

National Park Service

John Tiszler, Mark Mendelsohn

Matt Wells, Steve Buckley

Santa Monica Mountains Fund

**Deanna Armbruster, Antonio Sanchez, Tak
Chipman, Thu Tat, Ben Vizcarra-Barton, Brian
Gonzalez, Christina Jimenez, Carter Rosato, Oscar
Ochoa, Isabel Ventura, Krisha Parekh, Jocelyn
Adao, Lonie Brown, Lani Magana, Noah
Spickelmier, Timothy Turley, Emily Dion-Staebell,
Kaydee Inouye, Emily Alvarez**