



Planning an effective approach for controlling invasive tree-of-heaven

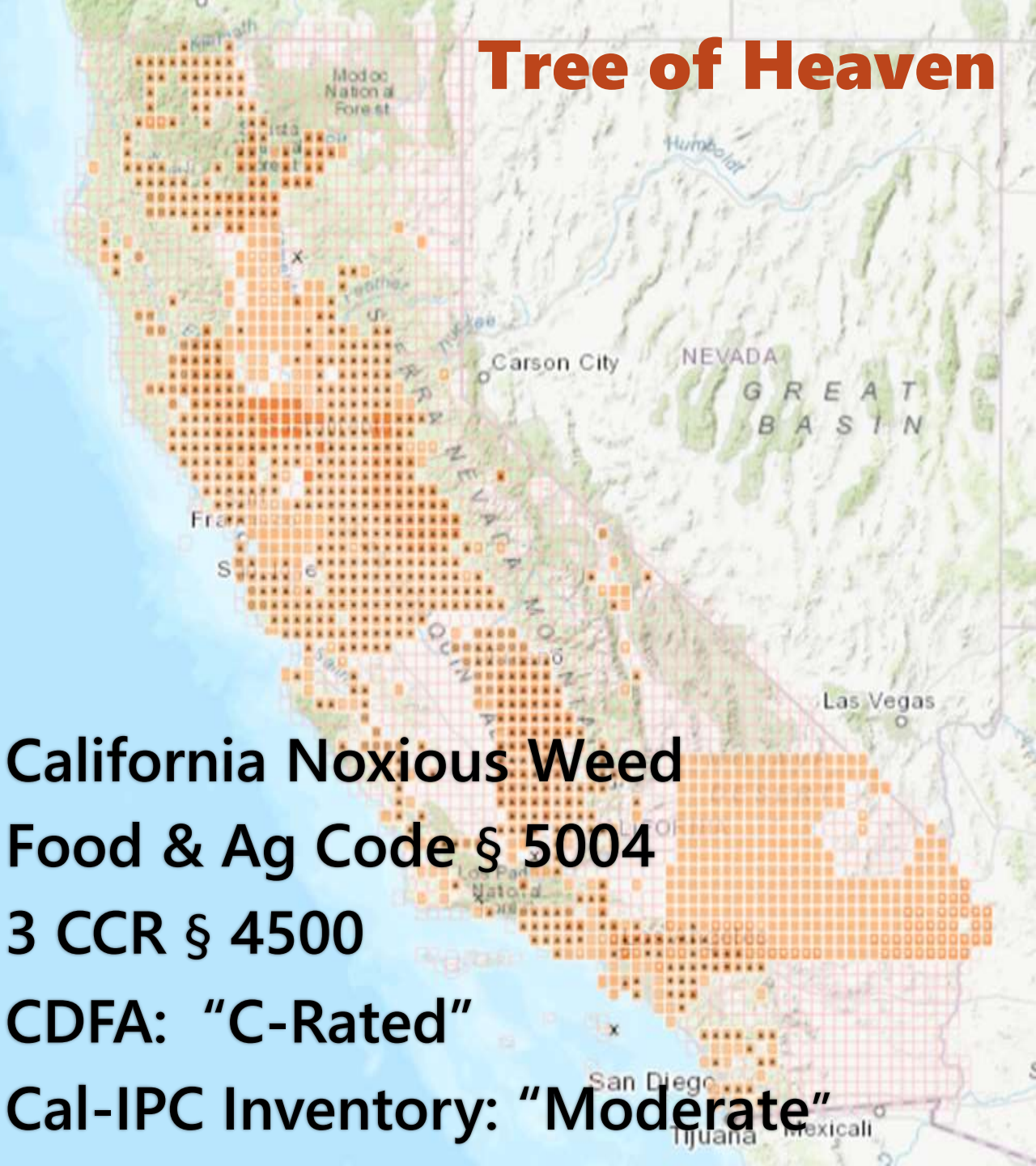
2024 Statewide WMA Meeting

Ed King, Solano County Agricultural Commissioner



Tree of Heaven

California Noxious Weed
Food & Ag Code § 5004
3 CCR § 4500
CDFA: "C-Rated"
Cal-IPC Inventory: "Moderate"



Spotted Lanternfly

PEST ALERT



Keep Spotted Lanternfly Out of California



LIFE STAGES OF THE SPOTTED LANTERNFLY (*Lycorma delicatula*)



Egg Mass
Year-round



Early Nymph
Spring - Summer



Late Nymph
Summer - Fall

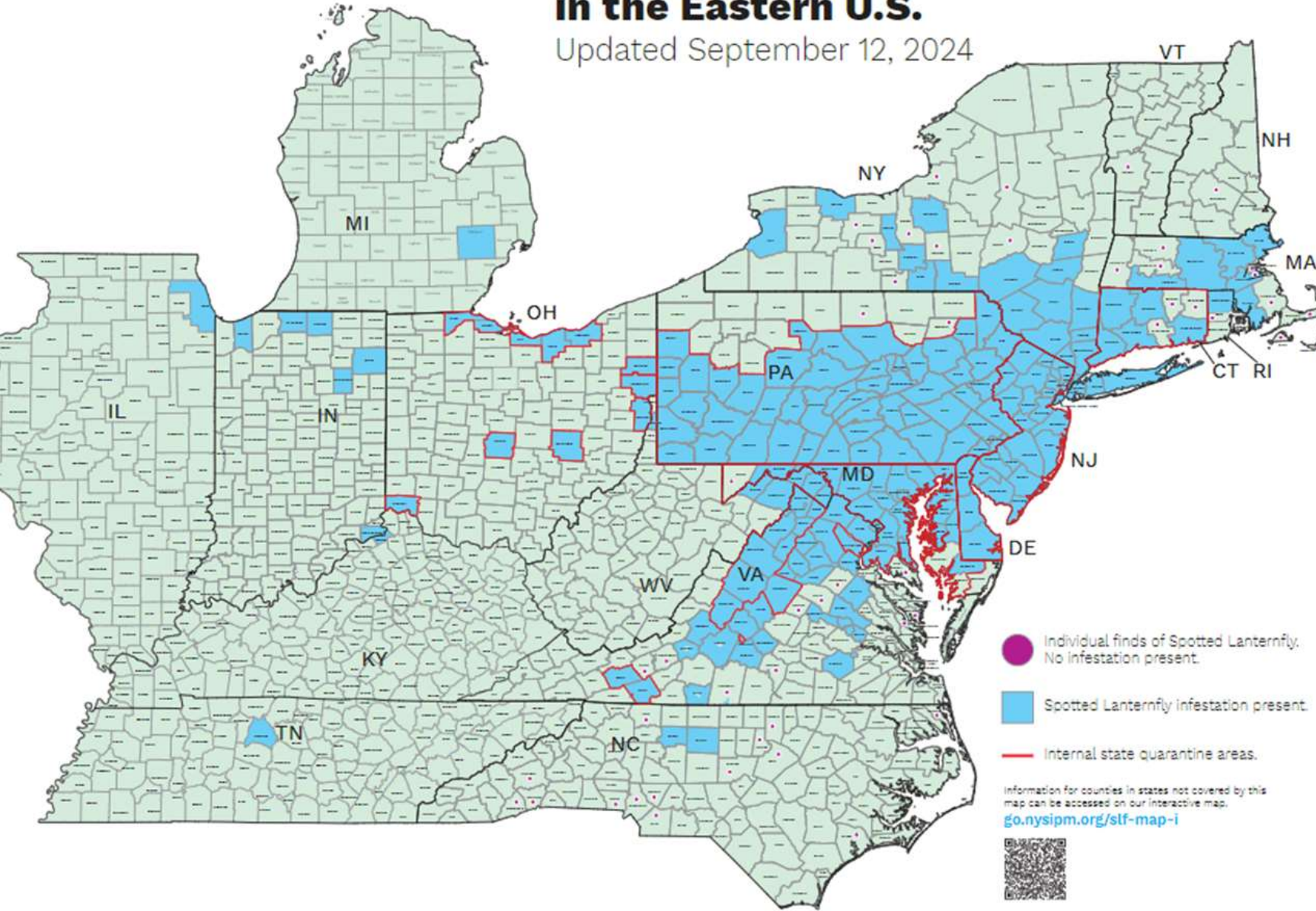


Adult
Summer - Winter



Spotted Lanternfly Reported Distribution in the Eastern U.S.

Updated September 12, 2024



Spotted Lanternfly

California Actions

- ◇ A-rated pest
- ◇ State Exterior Quarantine
- ◇ Risk-based surveys
- ◇ Border stations
- ◇ Air cargo inspections

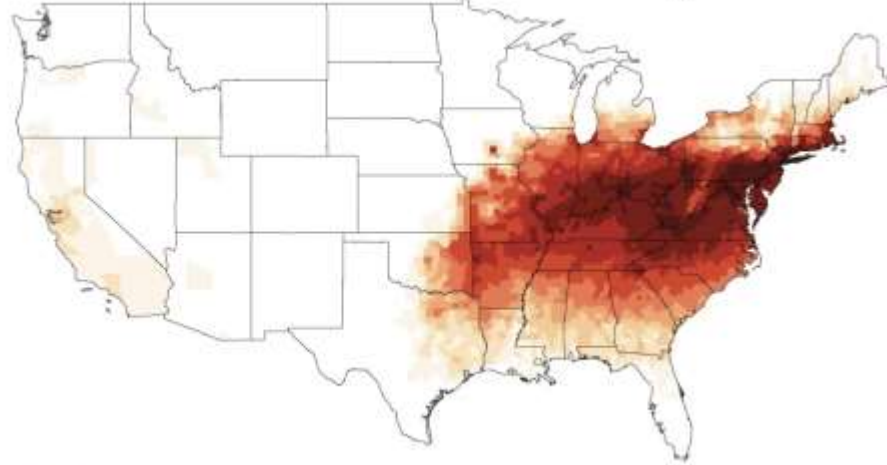


Spotted Lanternfly

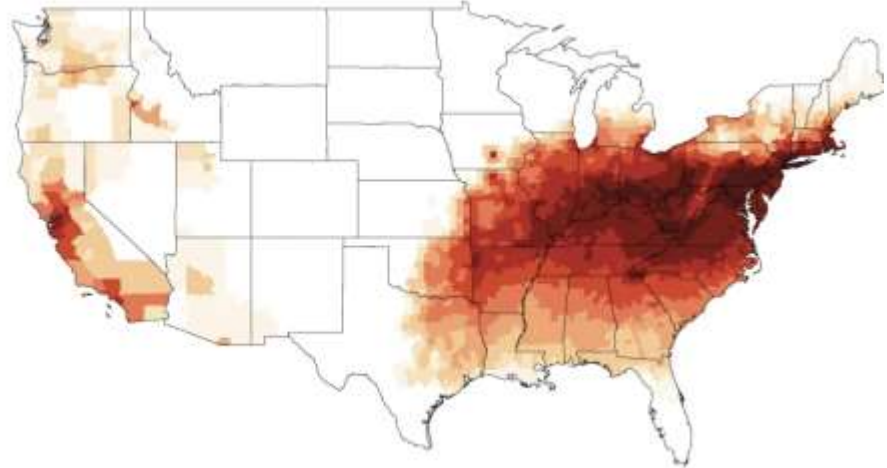
Potential distribution of SLF in the United States

U.S. Department of Agriculture

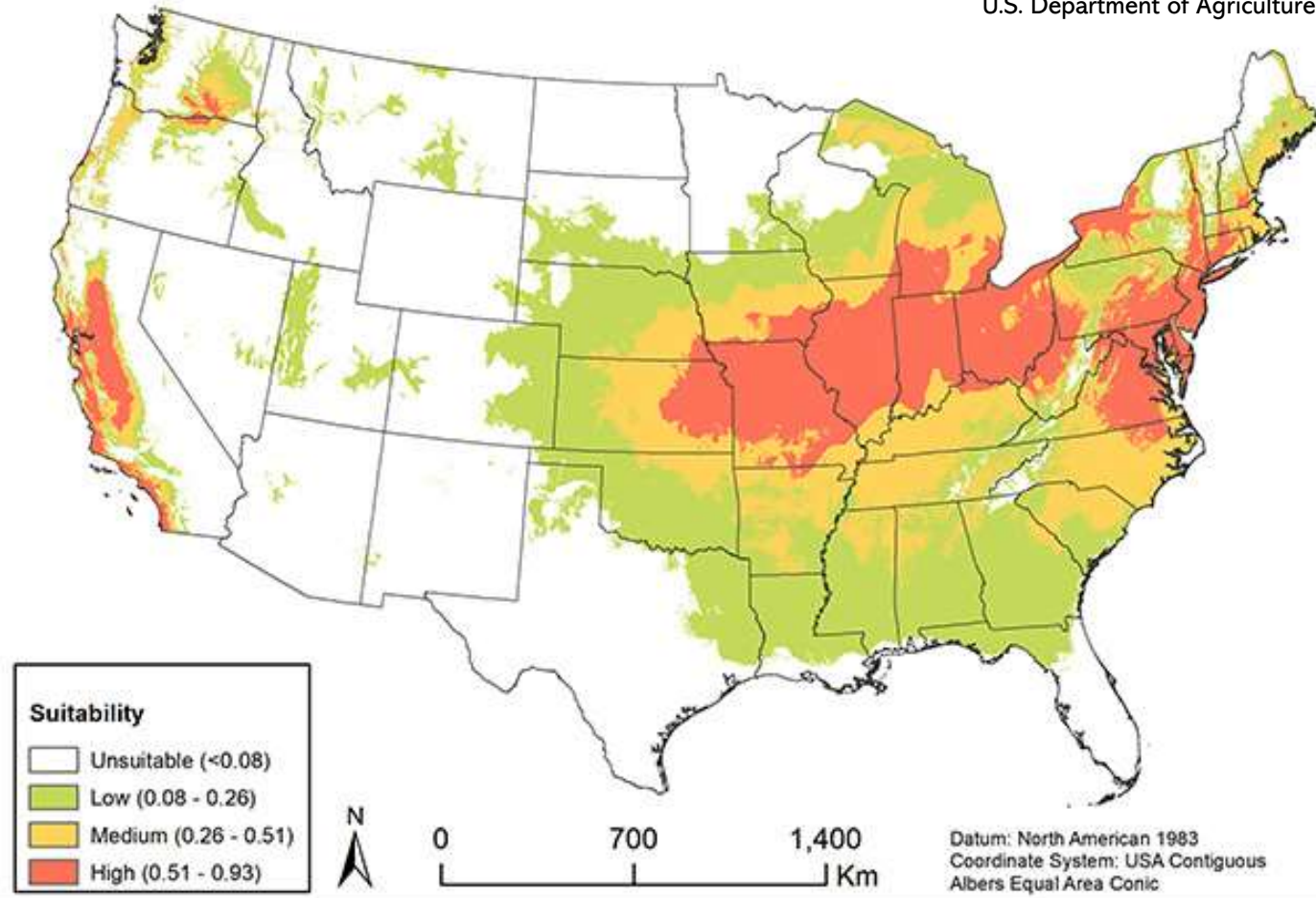
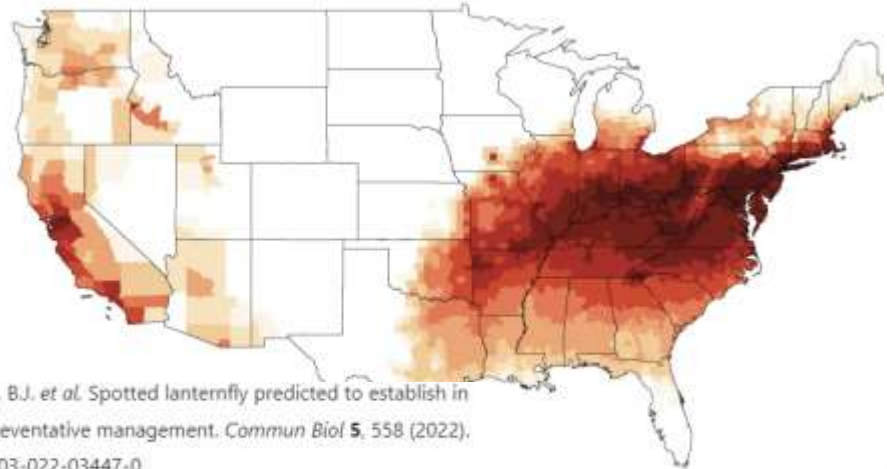
2033



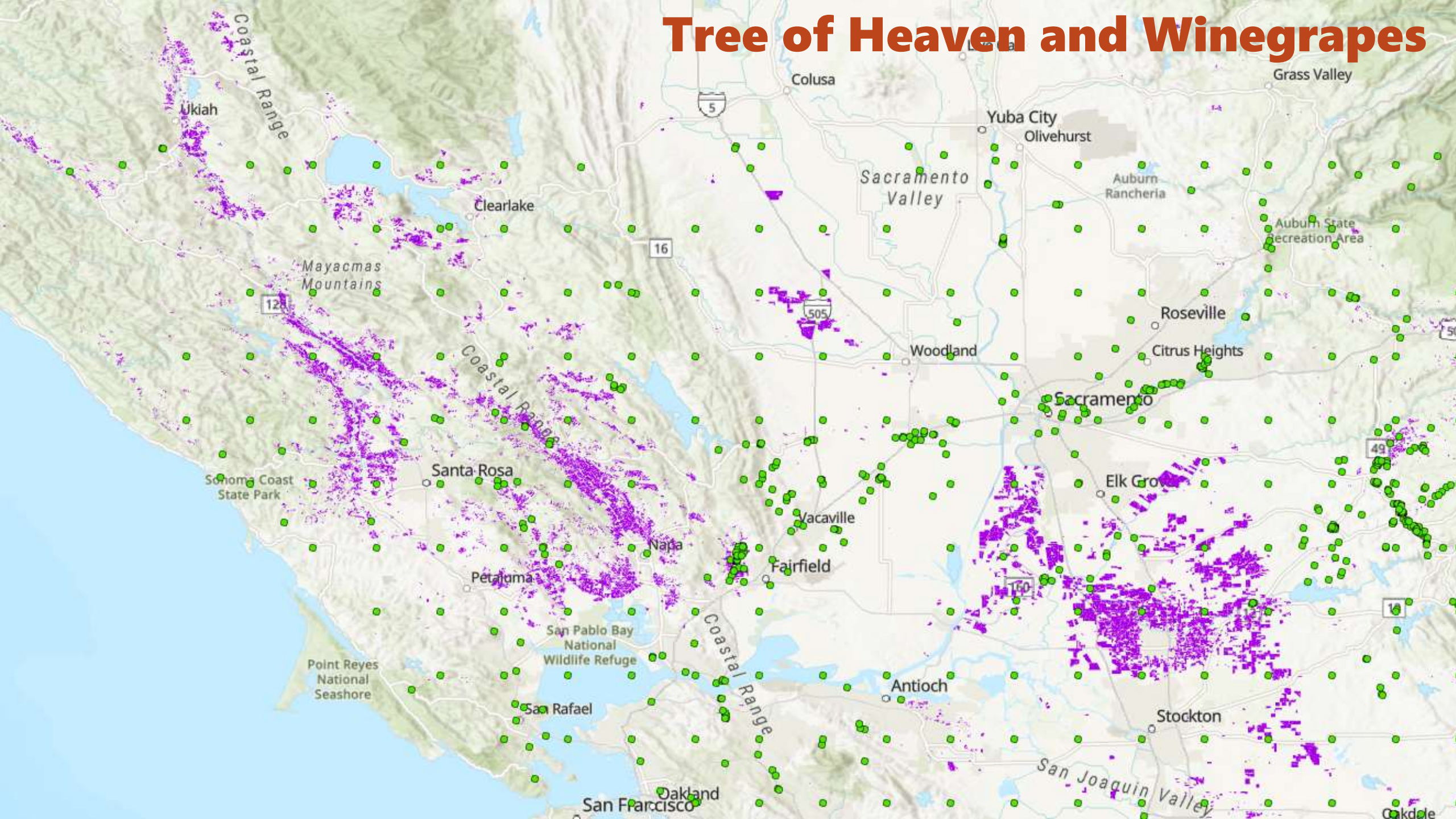
2041



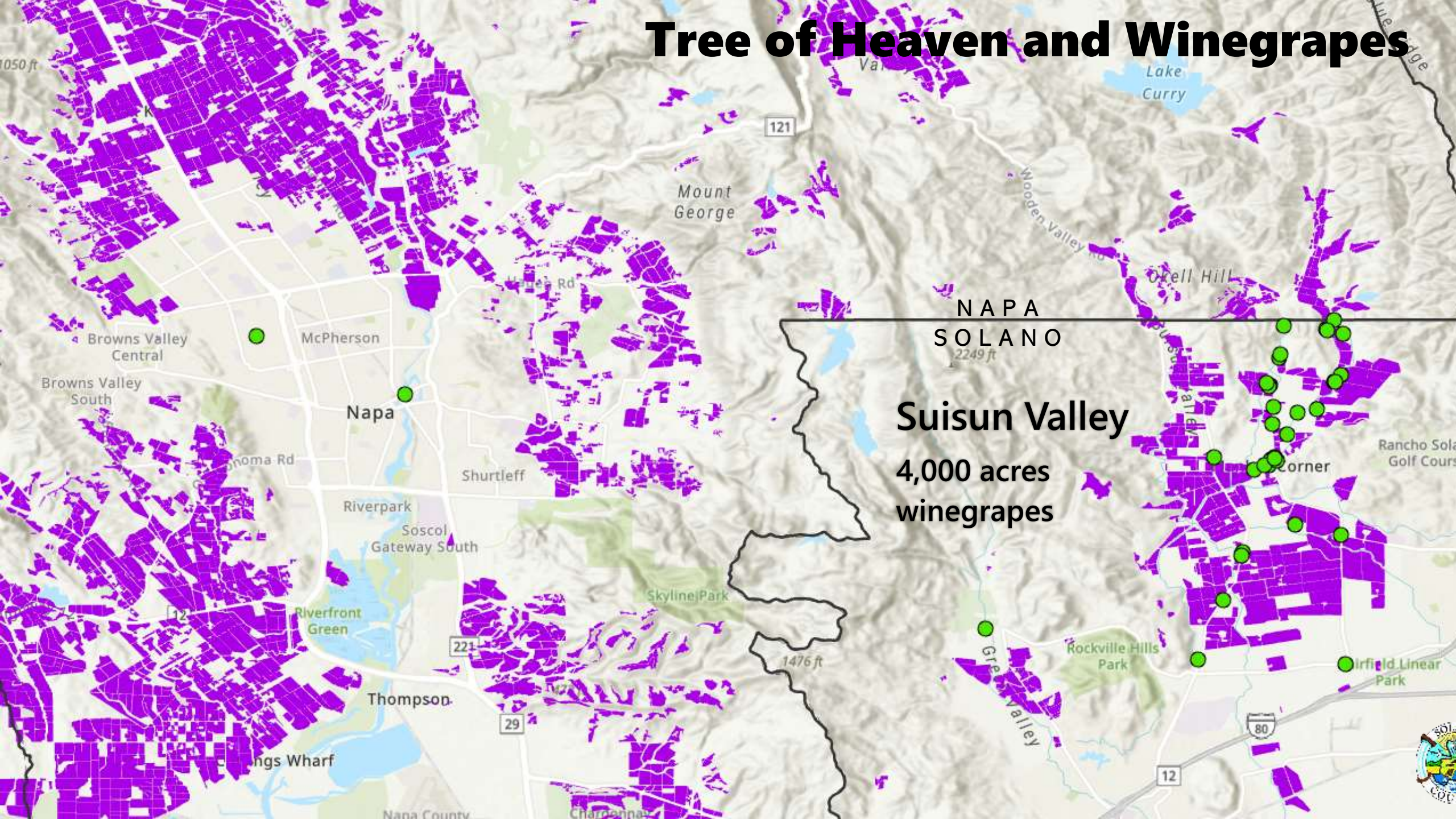
2050



Tree of Heaven and Winegrapes



Tree of Heaven and Winegrapes



NAPA
SOLANO
2249 ft

Suisun Valley
4,000 acres
winegrapes



Tree of Heaven and Winegrapes

