

FEATHER RIVER SPONGEPLANT (*LIMNOBIUM LAEVIGATUM*)

Robin Carter-Ervin

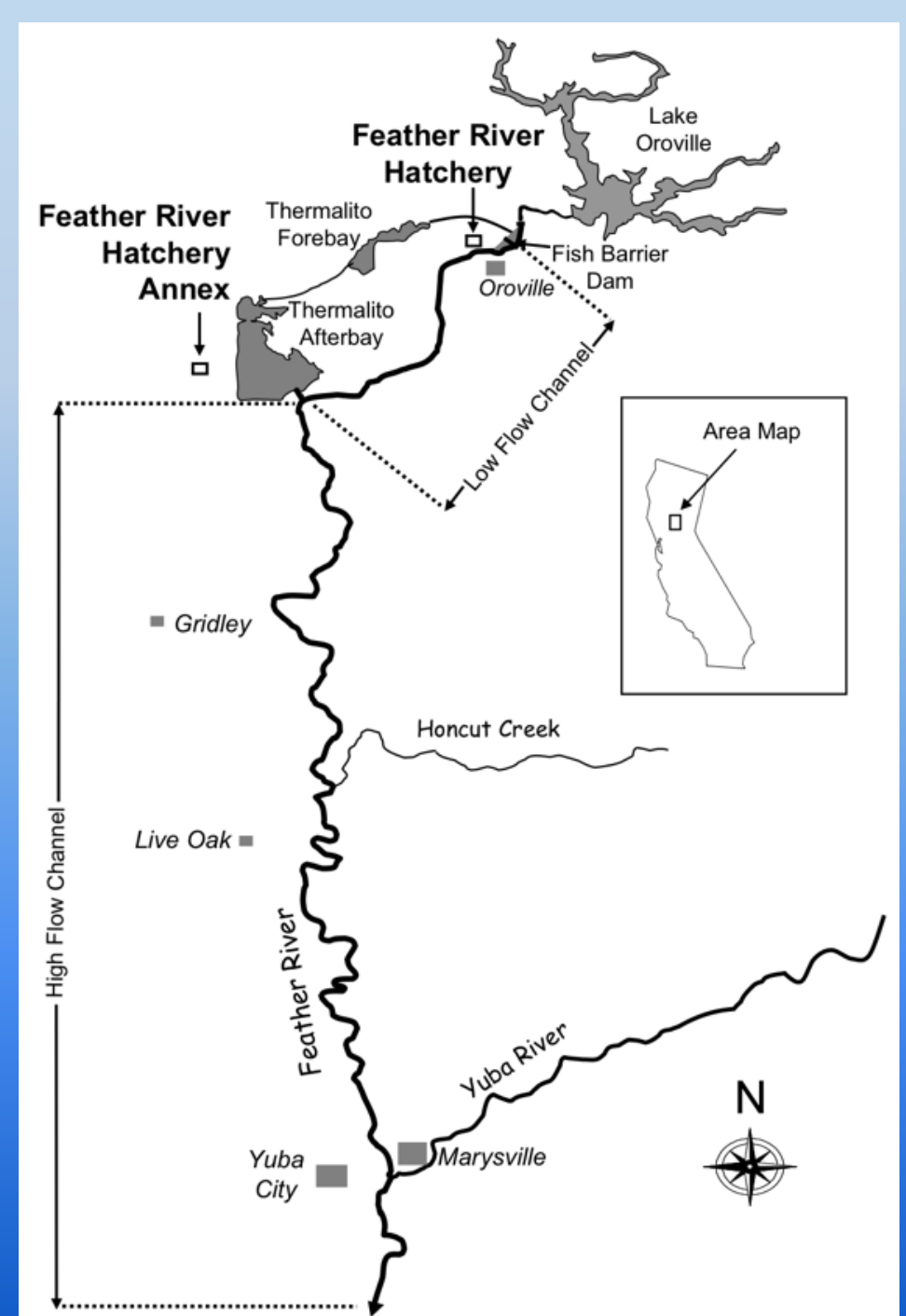
Department of Water Resources (DWR), Environmental
Scientist

Robin.Carter@water.ca.gov



CALIFORNIA DEPARTMENT OF
WATER RESOURCES









Home About ▾ Plants ▾ Resources ▾ Solutions ▾

Limnobiium spongia

Synonyms: Limnobiium laevigatum

Common names: South American spongeplant; West Indian spongeplant

Limnobiium spongia (South American spongeplant) is a perennial aquatic plant (family Hydrocharitaceae) found on the San Joaquin river and the Sacramento-San Joaquin delta. The spongeplant can form thick mats across the water causing problems for boats, fish, and water infrastructure. *Limnobiium spongia* can spread rapidly through quick seed production and vegetative growth. The small, floating seeds easily disperse once produced.

Cal-IPC Rating: High ?

CDFA Rating: A* ?



South American Spongeplant

(*Limnobiium laevigatum*)

Floating

Description

- Floating to rooted perennial
- Thick, spongy, floating ovate to spatula-shaped leaves; honeycomb-like spongy tissue on lower surfaces
- Juveniles develop into mature clumps up to 50 cm (~20 in) tall
- Small white flowers
- More mature plants can be confused with water hyacinth
- Native to Central and South America



Division of
Boating and Waterways

Growth Period

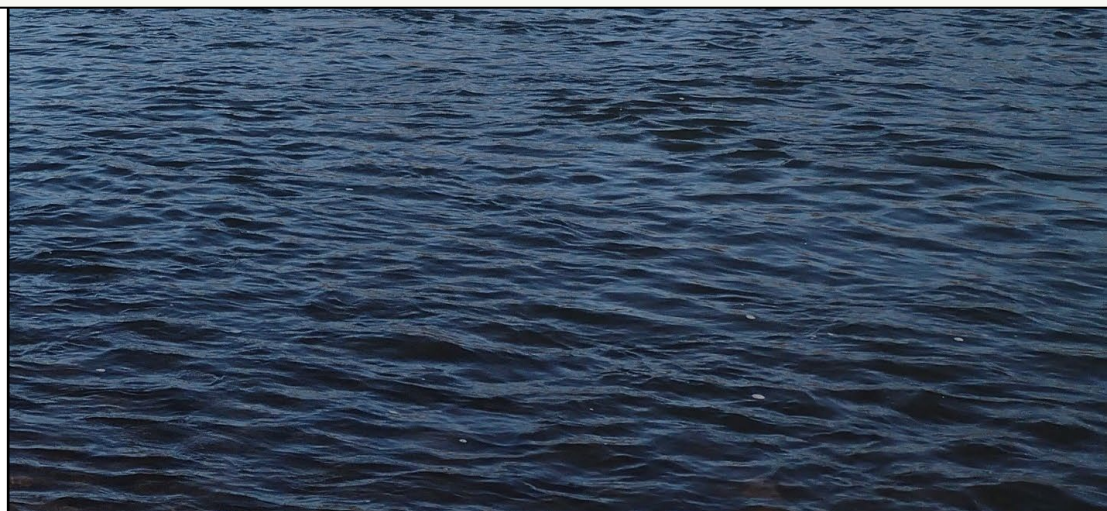
Spring - late fall; flowers June - September

Habitat

Ponds, sloughs, channels, canals, streams, lakes

Control Methods Currently Used By DBW:

Herbicide, Mechanical Removal, Hand Removal



Total pest count or number per (sweep, leaf, acre, trap, root, stem etc) Count:	<i>Entomology:</i> Conditions <input type="checkbox"/> Dead <input type="checkbox"/> Alive <input type="checkbox"/> Unknown Stages <input type="checkbox"/> Egg <input type="checkbox"/> Larva <input type="checkbox"/> Nymph <input type="checkbox"/> Pupa <input type="checkbox"/> Adult
<i>Nematology</i>	<i>Botany/Vertebrate:</i> Acreage net: Acreage gross:

Host

Host Tag	Common Name	Scientific Name	Type	Nema Field Block Type
	Variety	Container Size	Quantity and Units	Nema Field Block
	Remarks			

Identifications

Lab Botany	Scientist Genevieve Walden	Rating W	Common Name south american spongeplant
Date 11/29/2021	Order Hydrocharitales	Family Hydrocharitaceae	
Genus Limnobium		Species laevigatum	
Sub-Species		Higher Category	

General Identification Notes
 confirm spongeplant (**laevigatum**). sample vegetative, **leaf tip rounded** (not acute) leaves slightly cordate at base (**not deeply cordate**). noxious weed rated A, 3 CCR 4500. noxious weed seed rated P (prohibited), 3 CCR 3854 (this is for information purposes for the W rating). updated 12132021 **with results from molecular** (work by P.Woods, L.Phan), **id confirmed**.

CDFA is a great resource and available for identification purposes. Materials can be submitted directly to the lab, through the CCH2 portal, or from your local County Agricultural Commissioners. People can always email Genevieve Walden (Genevieve.Walden@cdfa.ca.gov) with questions. Specimens are very helpful for our diagnostic collections.

Mailing address and information:

Botany Lab and Herbarium [CDA]

Plant Pest Diagnostic Center

California Department of Food and Agriculture

3294 Meadowview Road

Sacramento California 95832

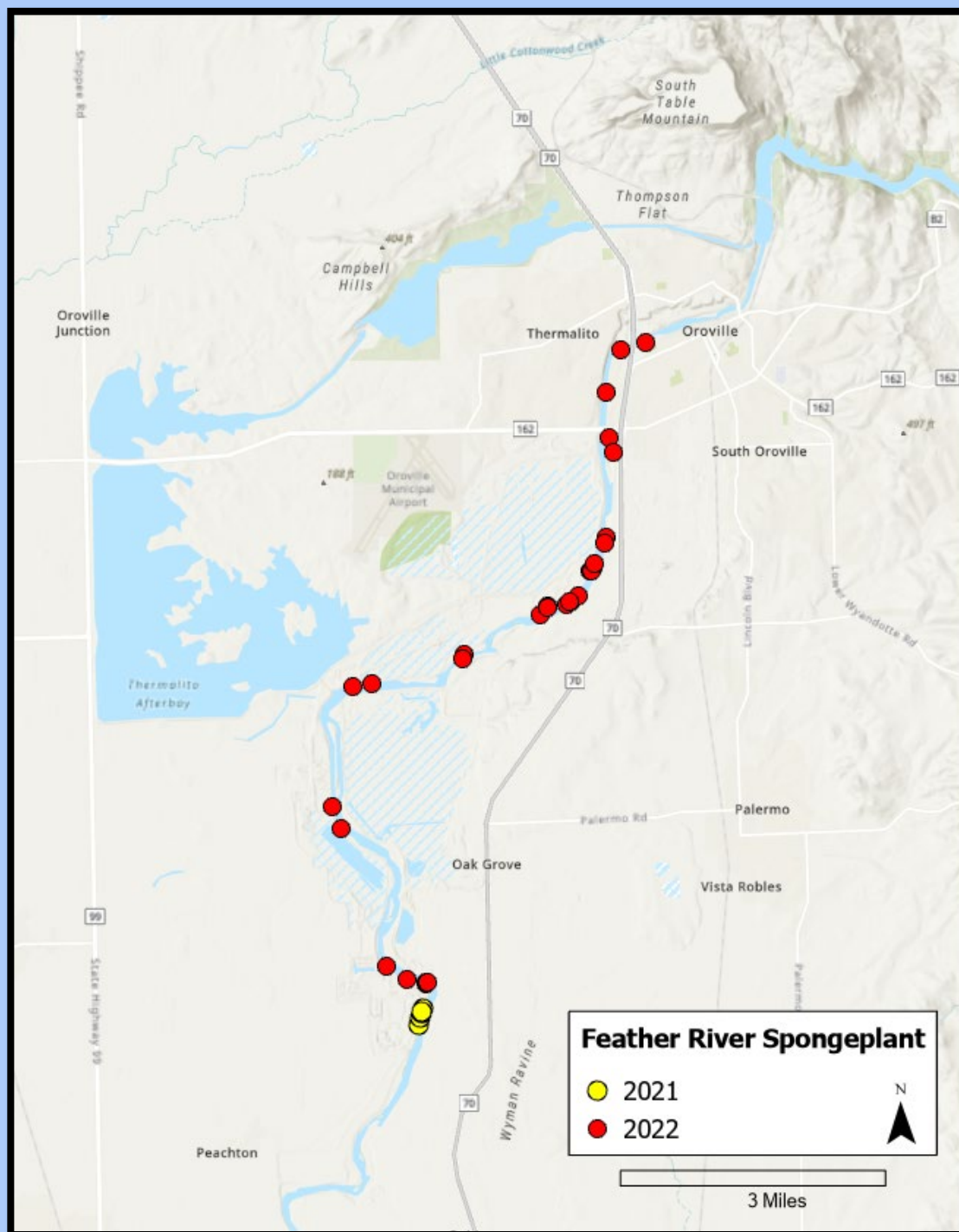
<https://www.cdfa.ca.gov/plant/ppd/>

CCH2 portal for CDA herbarium

<https://www.cch2.org/portal/collections/misc/collprofiles.php?collid=50>

Limnobium spongia (cordate, deep basal notch) and
Limnobium laevigatum (round, shallow basal notch)
young plants : GBPottern







2021 VS. 2022



DIVERSITY?

