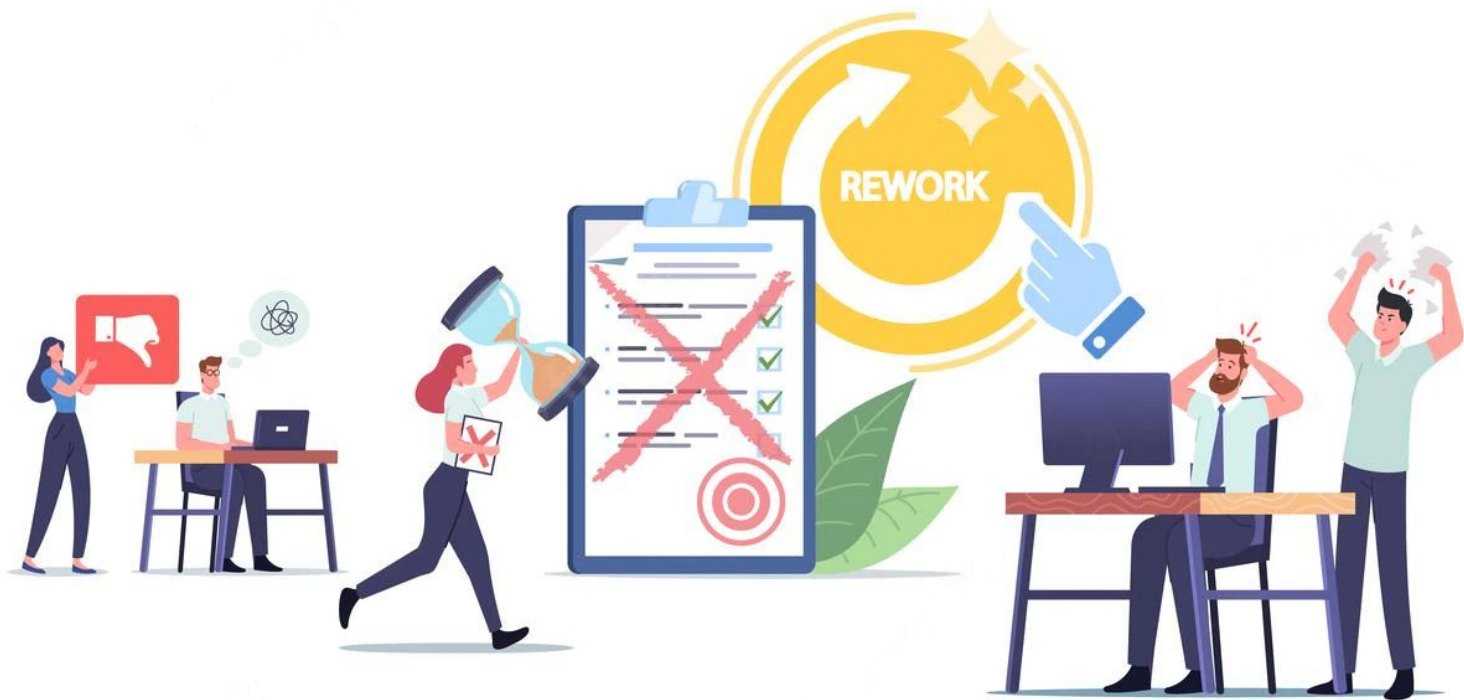


# Who's managing what, and for whom?



Joanna Tang, UCSB  
Brooke Wainwright, UC Davis  
Cal-IPC Symposium, November 2, 2022











# Paradigm shift: Land management as a long-term relationship

Indigenous  
perspective:  
humans as  
part of the  
ecosystem

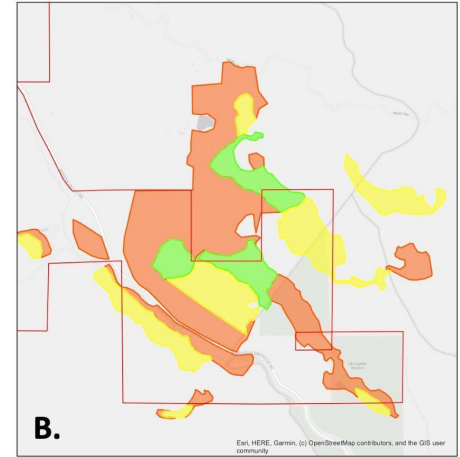
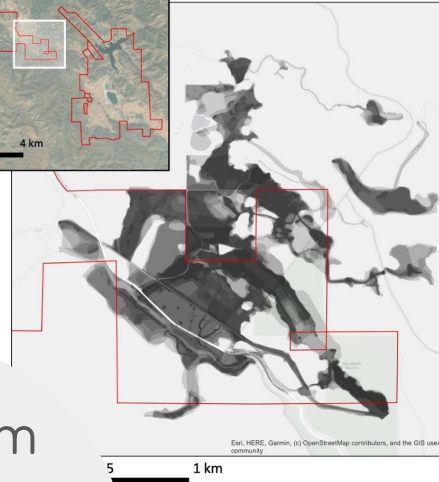
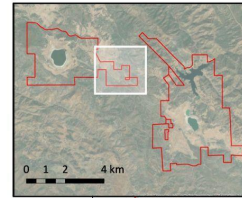
Long-term  
monitoring &  
adaptive  
management



# Case study: Hands on the Land, UC Davis



Long-term  
Inclusive  
Reciprocal



- McLaughlin Reserve boundary
- Restored to nearly 100% native vegetation
- Restored to native dominated with patches of nonnative vegetation
- Dense nonnative vegetation

Luzzio et al. (in review)