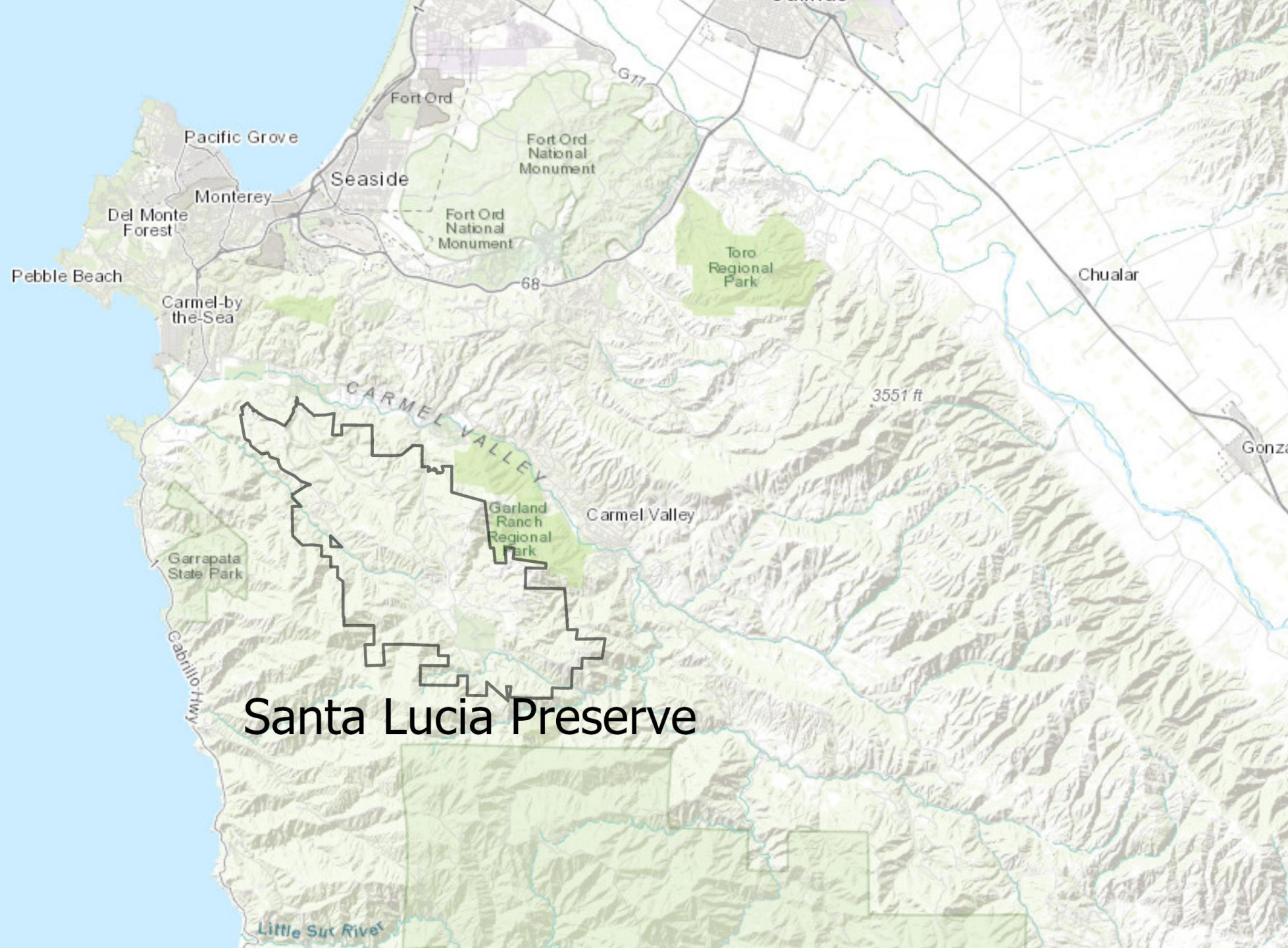


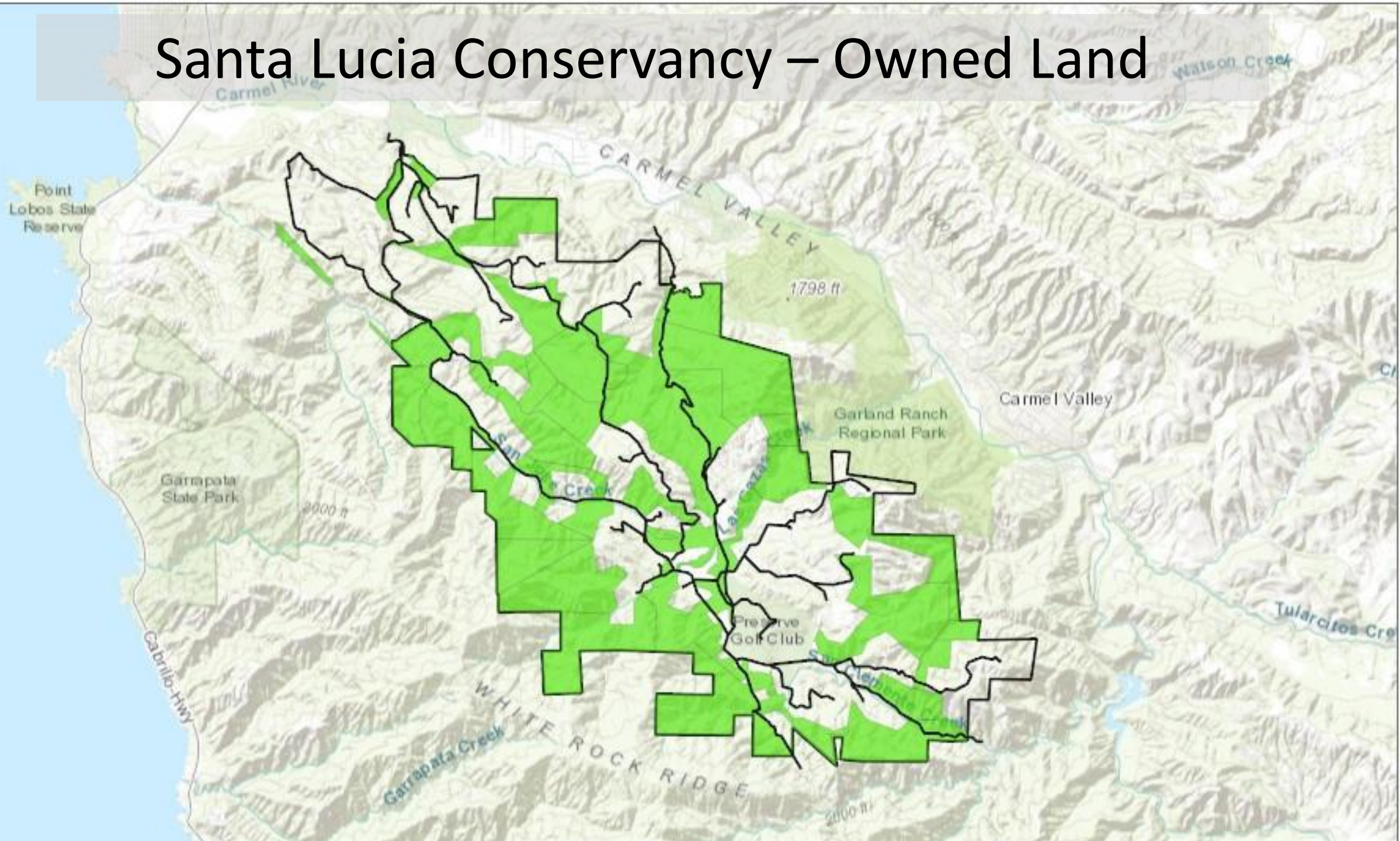
Managing Yellow Starthistle in Grazed and Ungrazed Areas on California's Central Coast

Jackson Brooke, Jenna Allred
Santa Lucia Conservancy

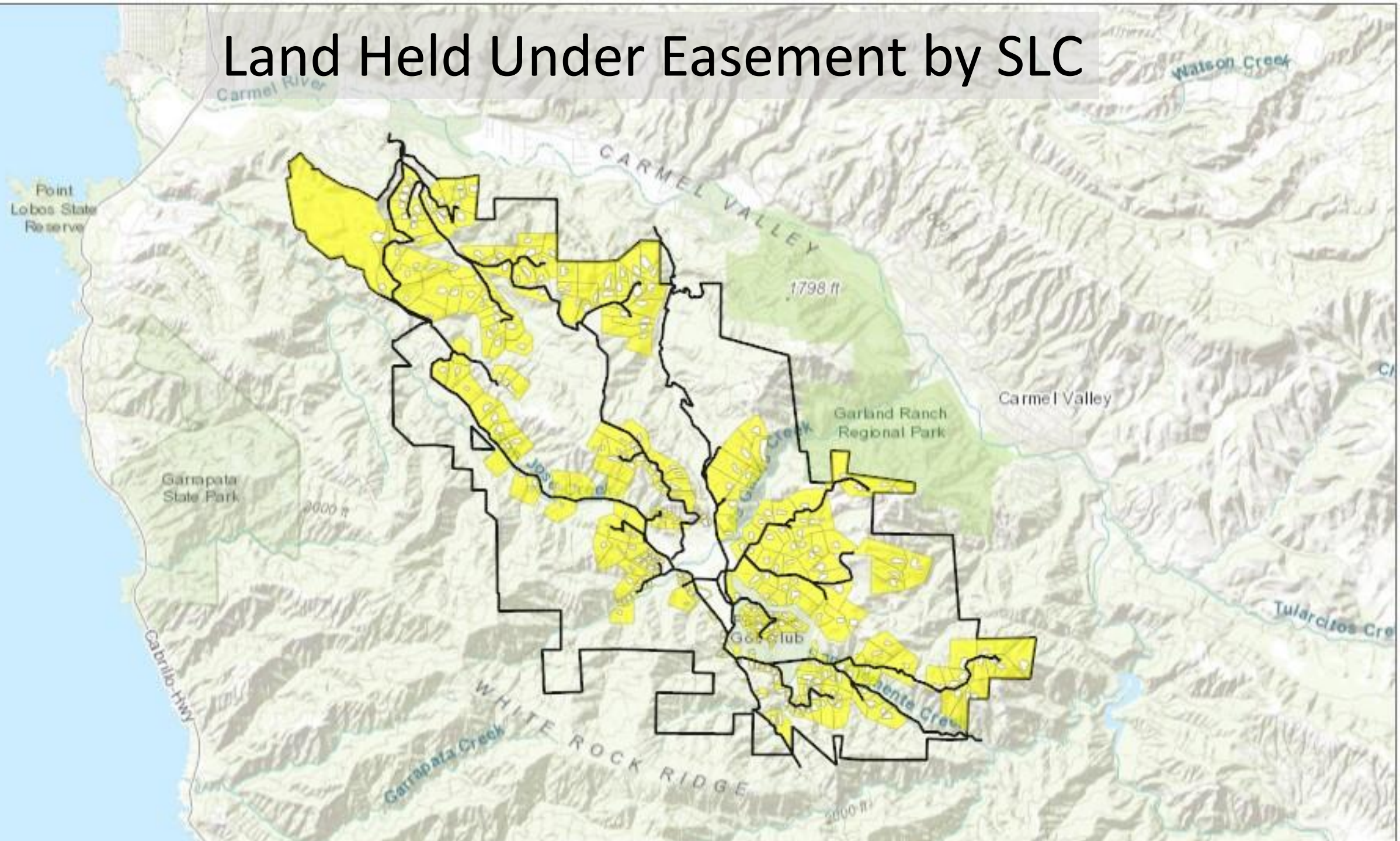


Santa Lucia Preserve

Santa Lucia Conservancy – Owned Land

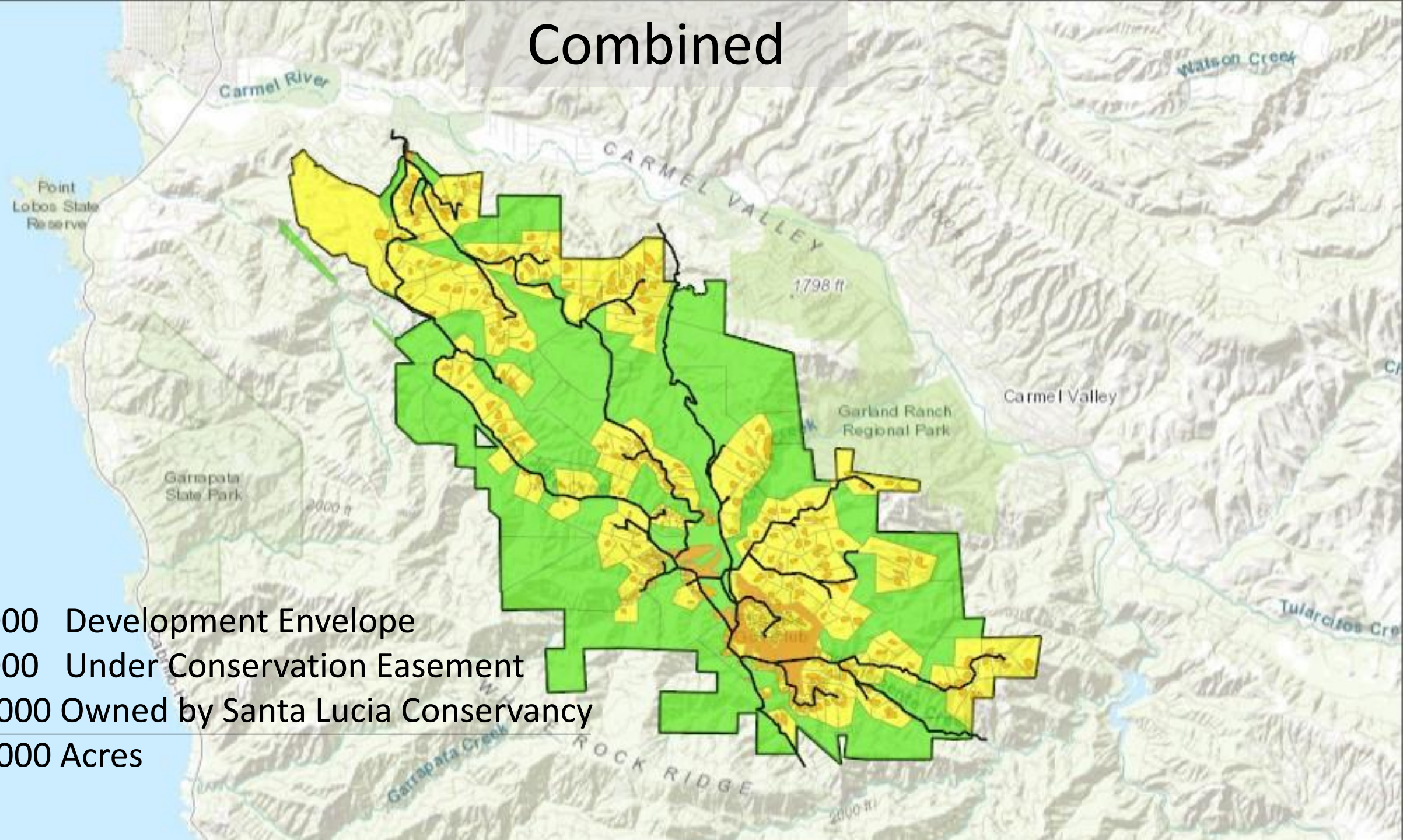


Land Held Under Easement by SLC



Combined

2,000 Development Envelope
8,000 Under Conservation Easement
+ 10,000 Owned by Santa Lucia Conservancy
= 20,000 Acres



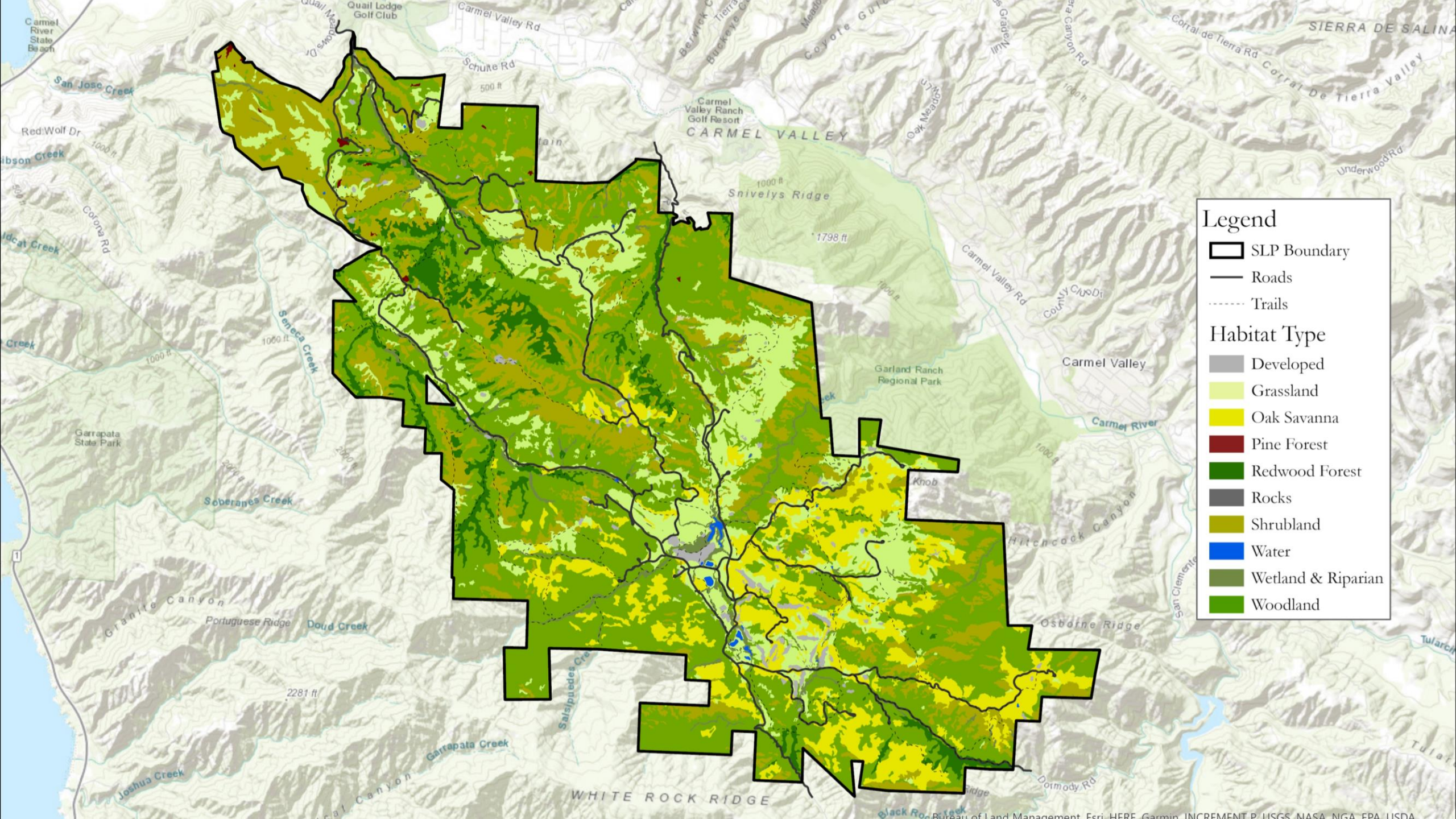












Legend

- SLP Boundary
- Roads
- Trails

Habitat Type

- Developed
- Grassland
- Oak Savanna
- Pine Forest
- Redwood Forest
- Rocks
- Shrubland
- Water
- Wetland & Riparian
- Woodland





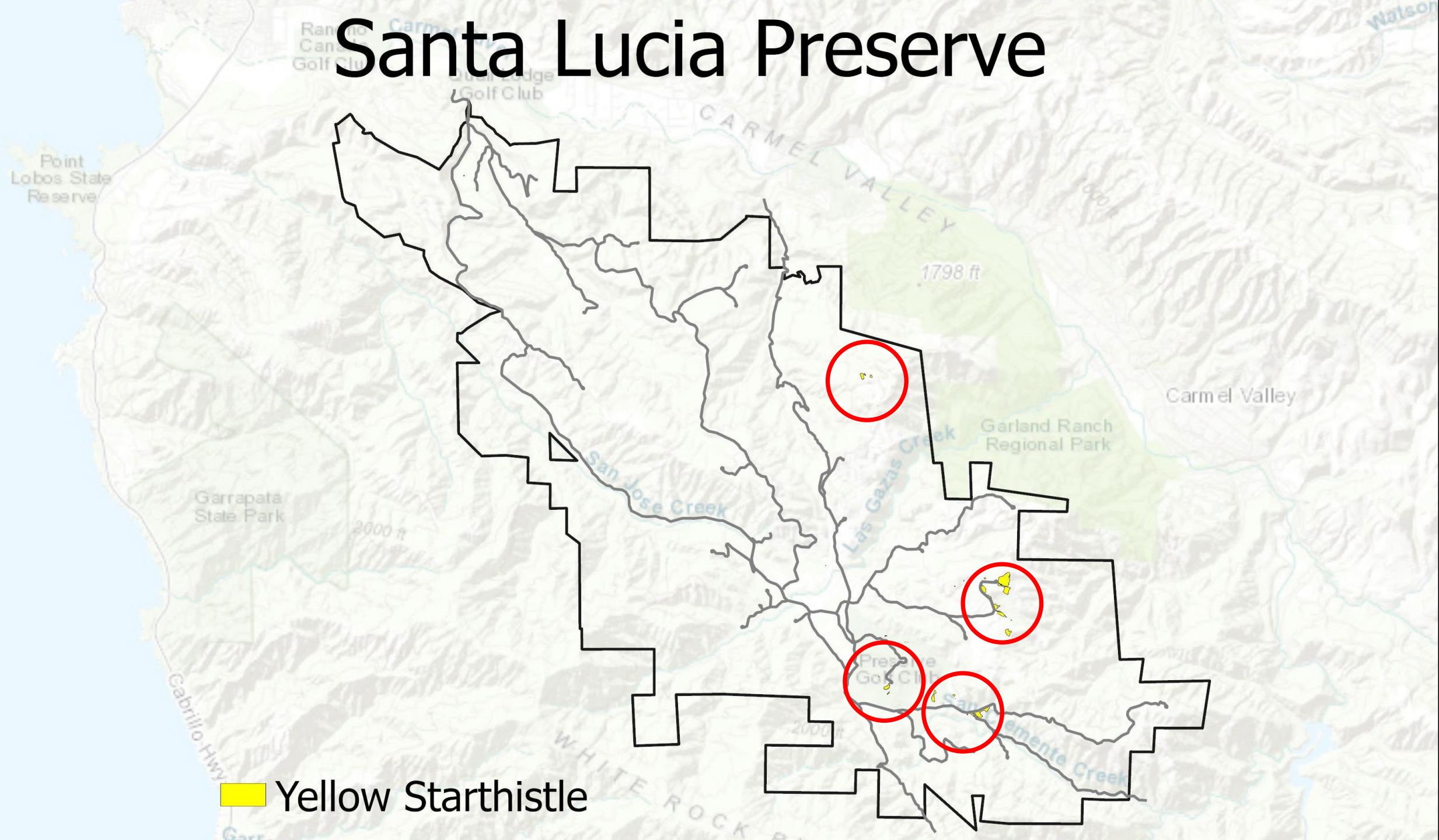








Santa Lucia Preserve

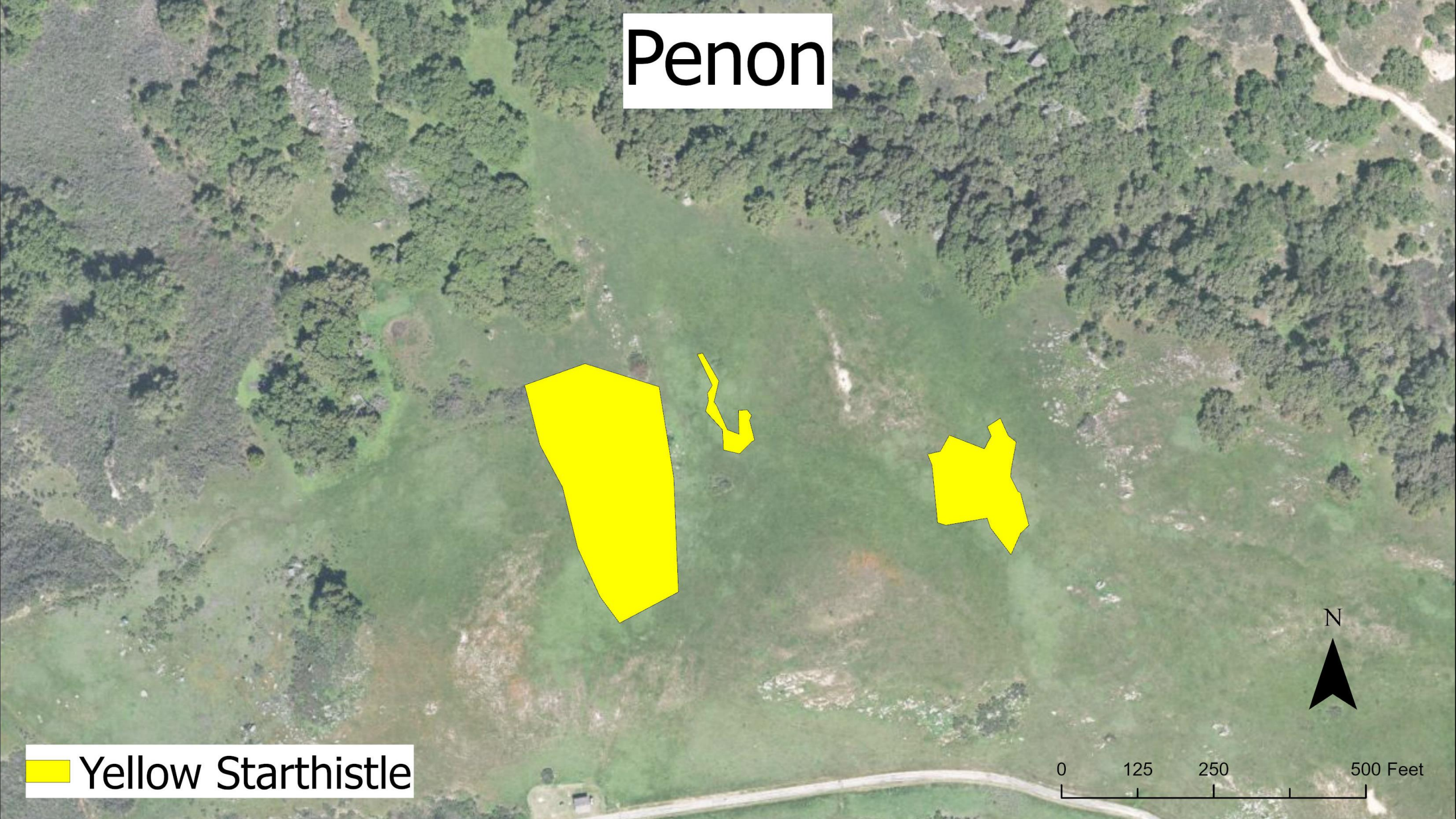
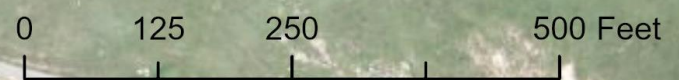






Penon

 Yellow Starthistle



Black Mountain

 Yellow Starthistle

0 450 900 1,800 Feet

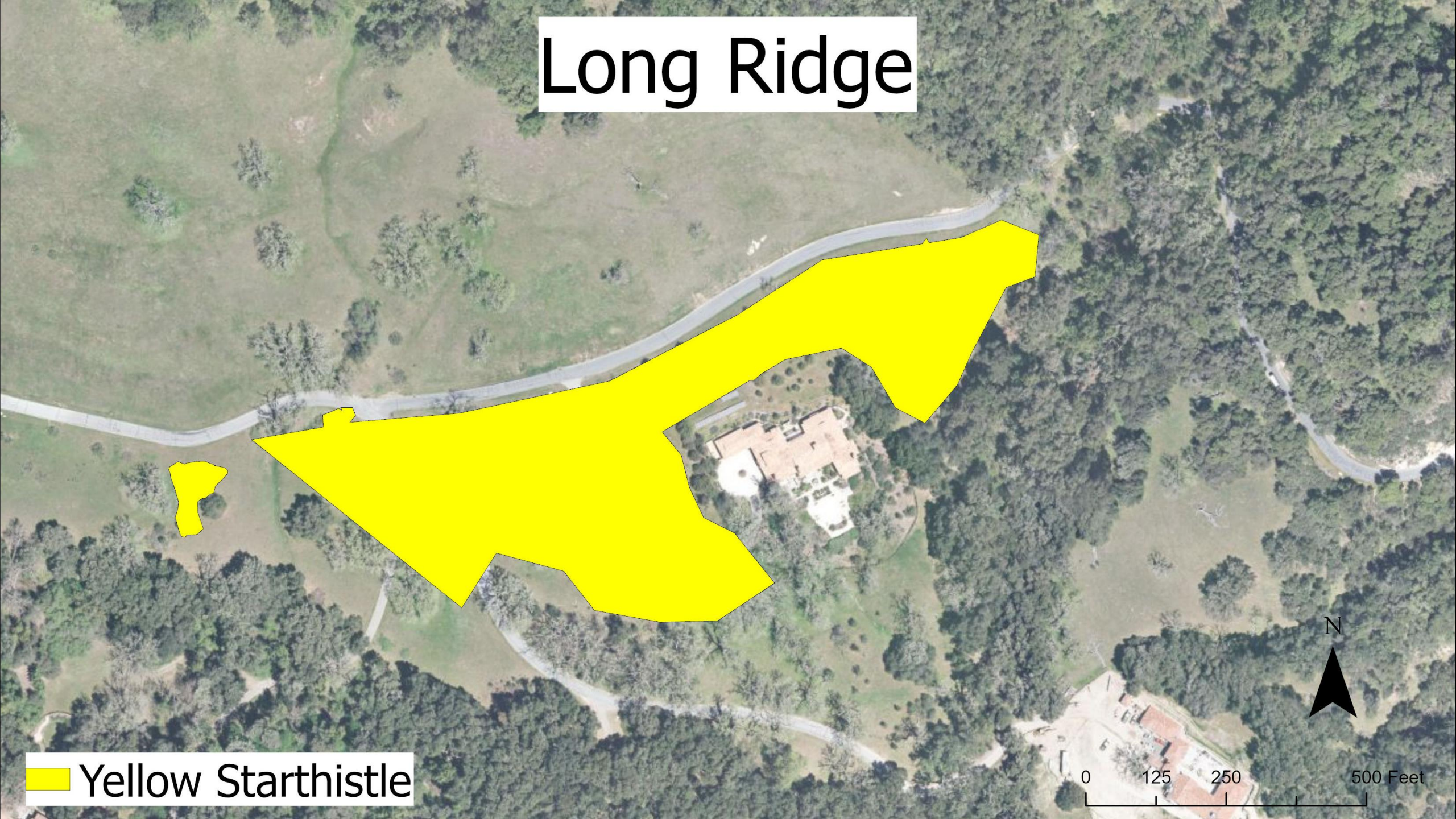


Long Ridge

 Yellow Starthistle



0 125 250 500 Feet

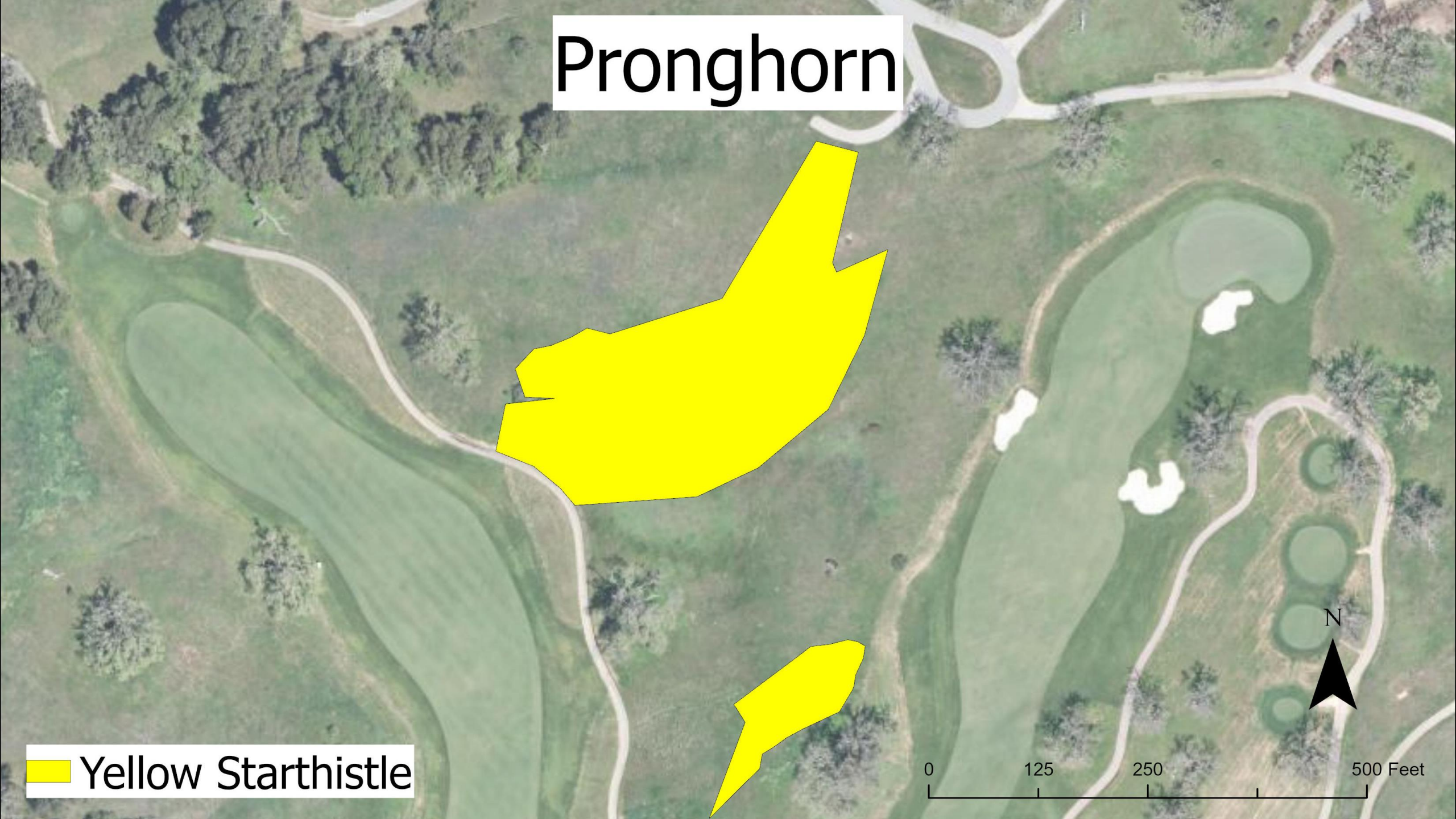


Pronghorn

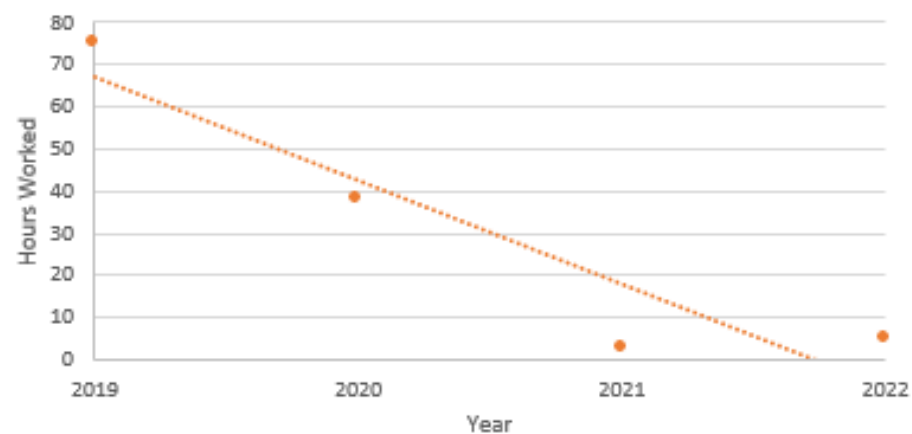
 Yellow Starthistle

0 125 250 500 Feet

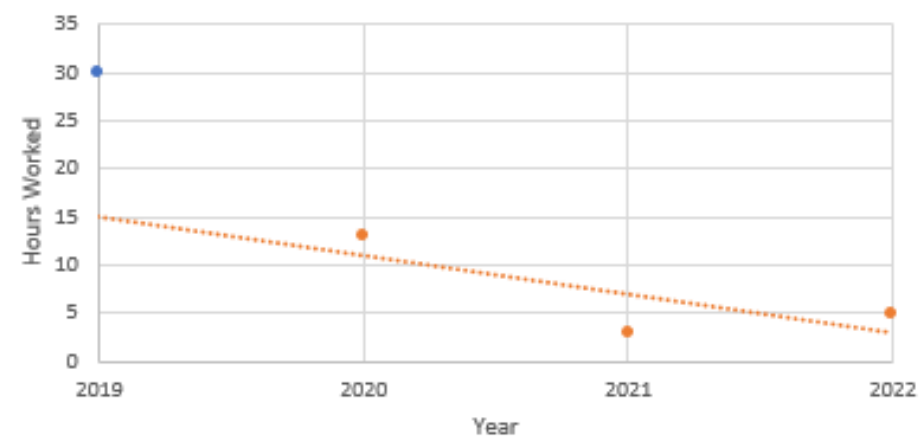
N



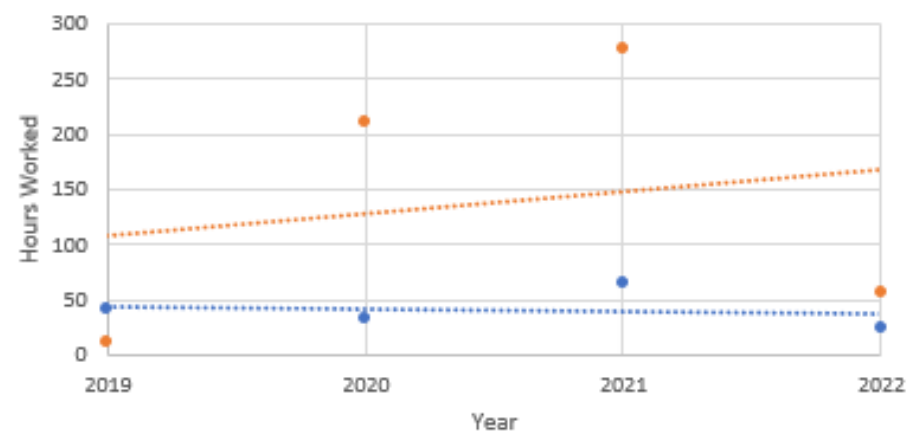
Penon Peak
Hours Worked by Year



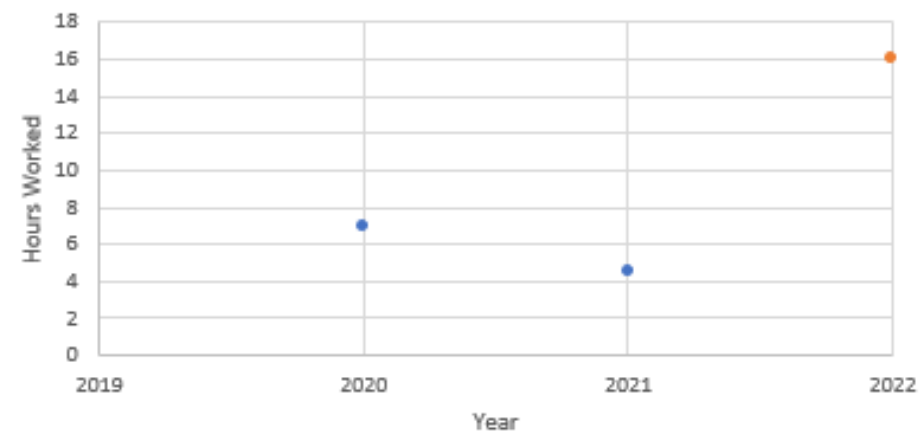
Long Ridge
Hours Worked by Year



Black Mountain
Hours Worked by Year



Pronghorn
Hours Worked by Year



• Spot-Spray • Hand-pull Linear (Spot-Spray) Linear (Hand-pull)



	Hours Worked Per Year				Month Grazed			
Area	2019	2020	2021	2022	2019	2020	2021	2022
Penon <i>Hand-pull</i>	75	38	3	5	October		July	
Black Mountain <i>Spot-spray</i>	42	34	66	24		January	January	October
<i>Hand-pull</i>	12	212	277	57*				
Long Ridge <i>Spot-spray</i>	30							May
<i>Hand-pull</i>		13	3	5				
Pronghorn <i>Spot-spray</i>		7	4.5					
<i>Hand-pull</i>				16				

*Black Mountain hand-pulling was not completed in 2022 due to staffing shortages





Thank You!
jbrooke@slconservancy.org

