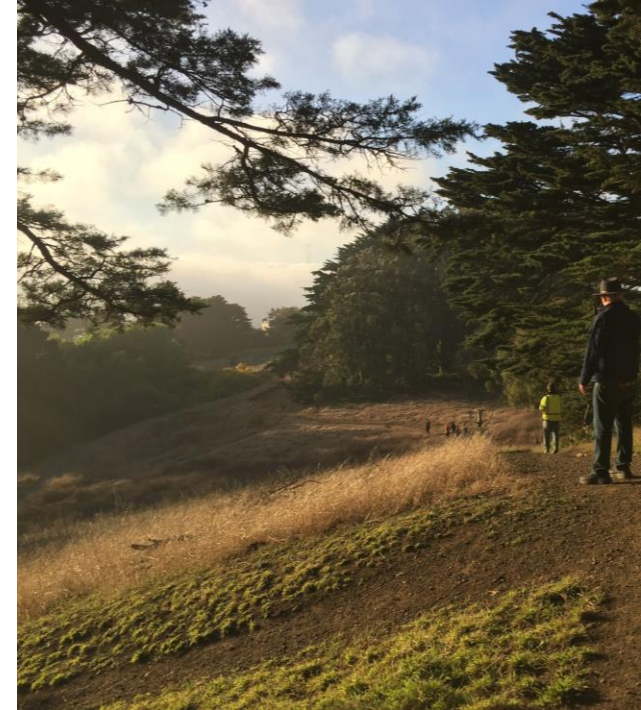




Biodiverse City

Managing for biodiversity with San Francisco Recreation and Parks Department



SF RPD Natural Resources Division



San Francisco's Recreation and Parks Natural Resource Division

- 7 NR Specialist
- Over 1100 Acres
- 32 Parks



Remnant Accessible plant communities





Why does a city need focused staff?

We protect the remnant assemblage of unique ecosystems



A few other displaced plants

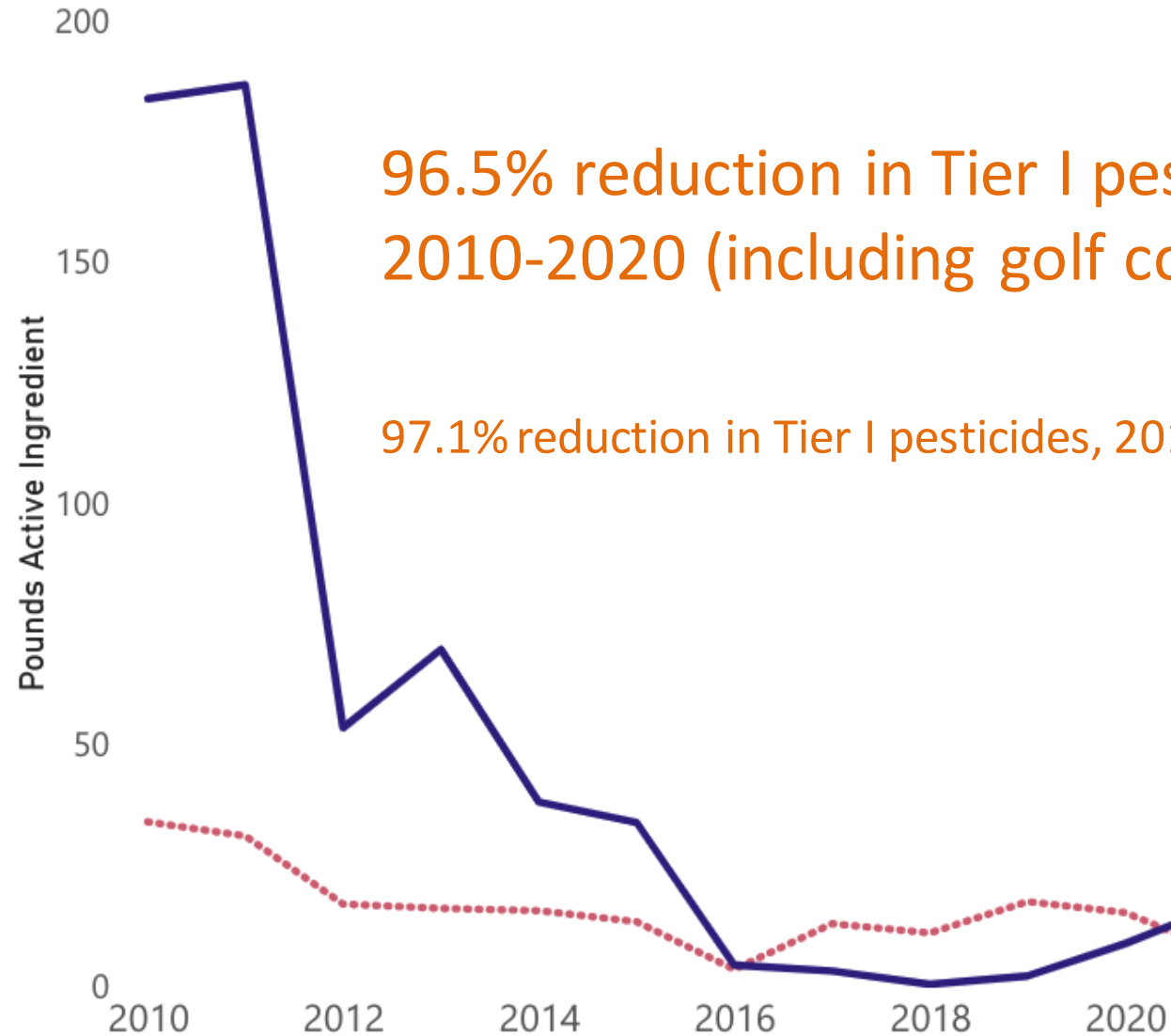
- Italian thistle (*Carduus pycnocephalus*), ice plant (*Carpobrotus chilensis*), cape ivy (*Delairea odorata*), ehrharta (*Ehrharta erecta*), French broom (*Genista monspessulana*), Himalayan blackberry (*Rubus armeniacus*).



400 species of birds, over
450 species of naturally
occurring native plants,
plus bees butterflies and
other friends

Trends

Location Category NATURAL AREAS — PARKS & FACILITIES

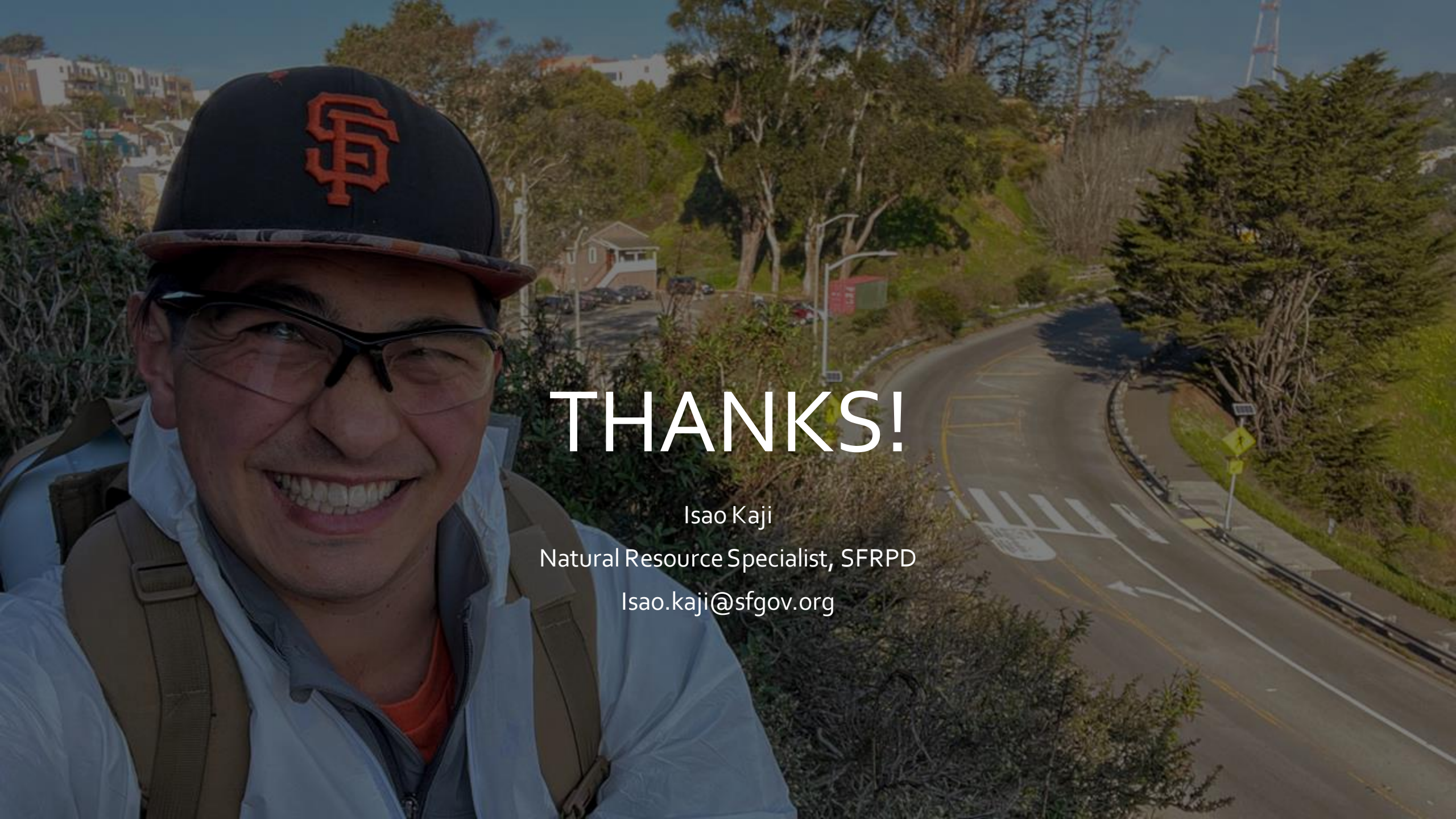


96.5% reduction in Tier I pesticides,
2010-2020 (including golf courses)

97.1% reduction in Tier I pesticides, 2010-2019



Community, Labor & City Support



THANKS!

Isao Kaji

Natural Resource Specialist, SFRPD

Isao.kaji@sfgov.org