



Land stewardship in these changing times: Hard work, a sense of humor and a dash of humility go a long way towards peace of mind.

Michael Gillogly, Preserve Manager
Dwight Center for Conservation Science at Pepperwood

Acknowledgement & Partnership



Pepperwood Preserve sits within the traditional homeland of the Wappo people.

We respect and honor past, present and future generations of Wappo and their continued connection to this land.

We are grateful for the opportunity to gather in this beautiful place and give our respect for its first inhabitants.



Dwight Center for Conservation Science

3,200 acre
preserve
home to
over 900
species of plants
and animals



Mission: Inspiring Conservation through Science



Integrate research, education, and community



Sentinel Site

long-term record of landscape condition



alert systems



weather, water
& soil



vegetation



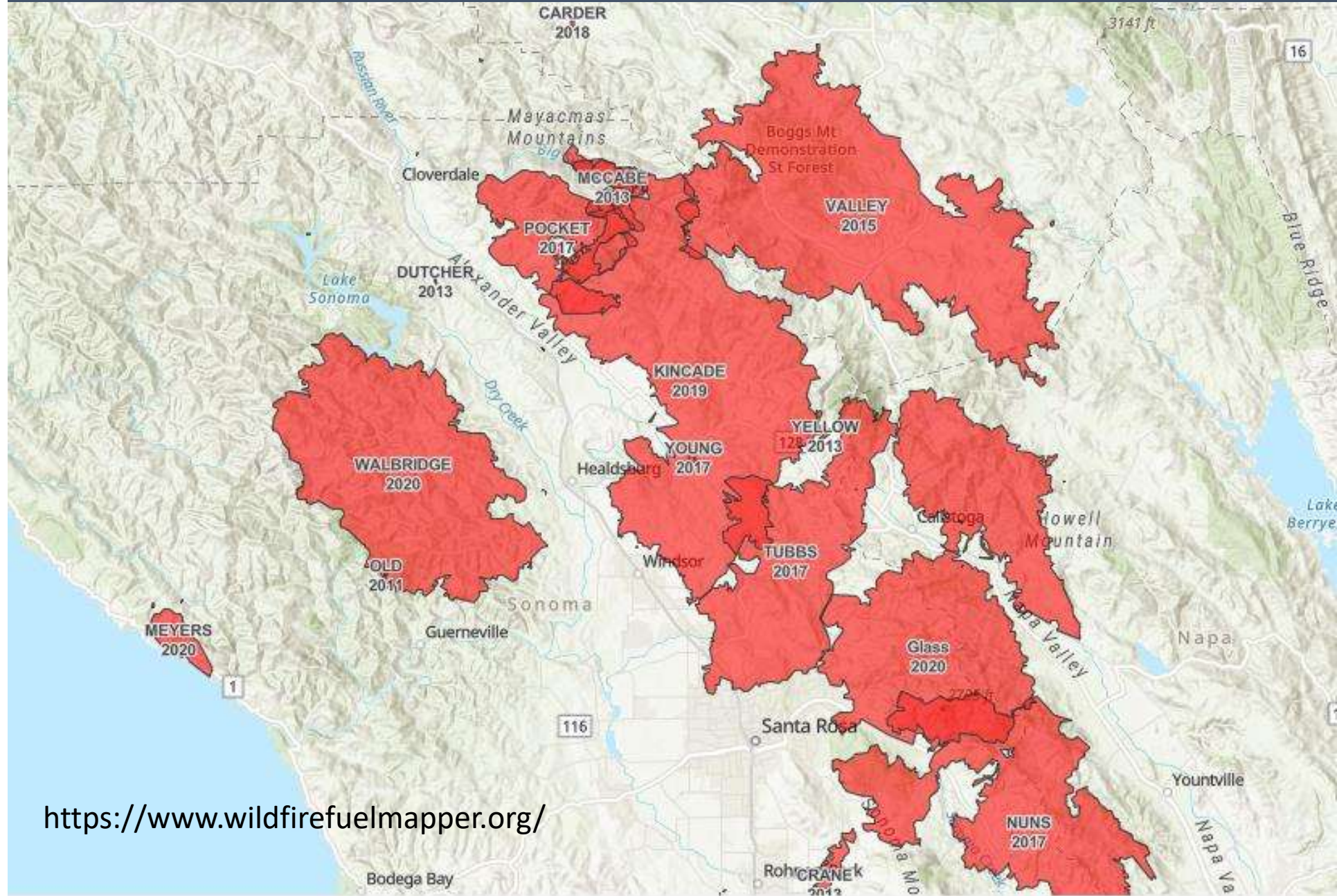
wildlife &
connectivity

measure, map, and
model ecosystem
health

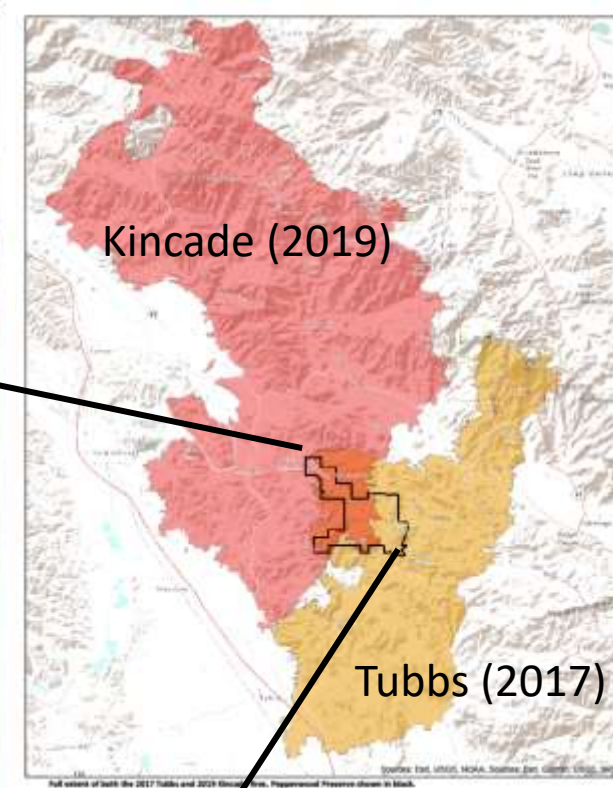
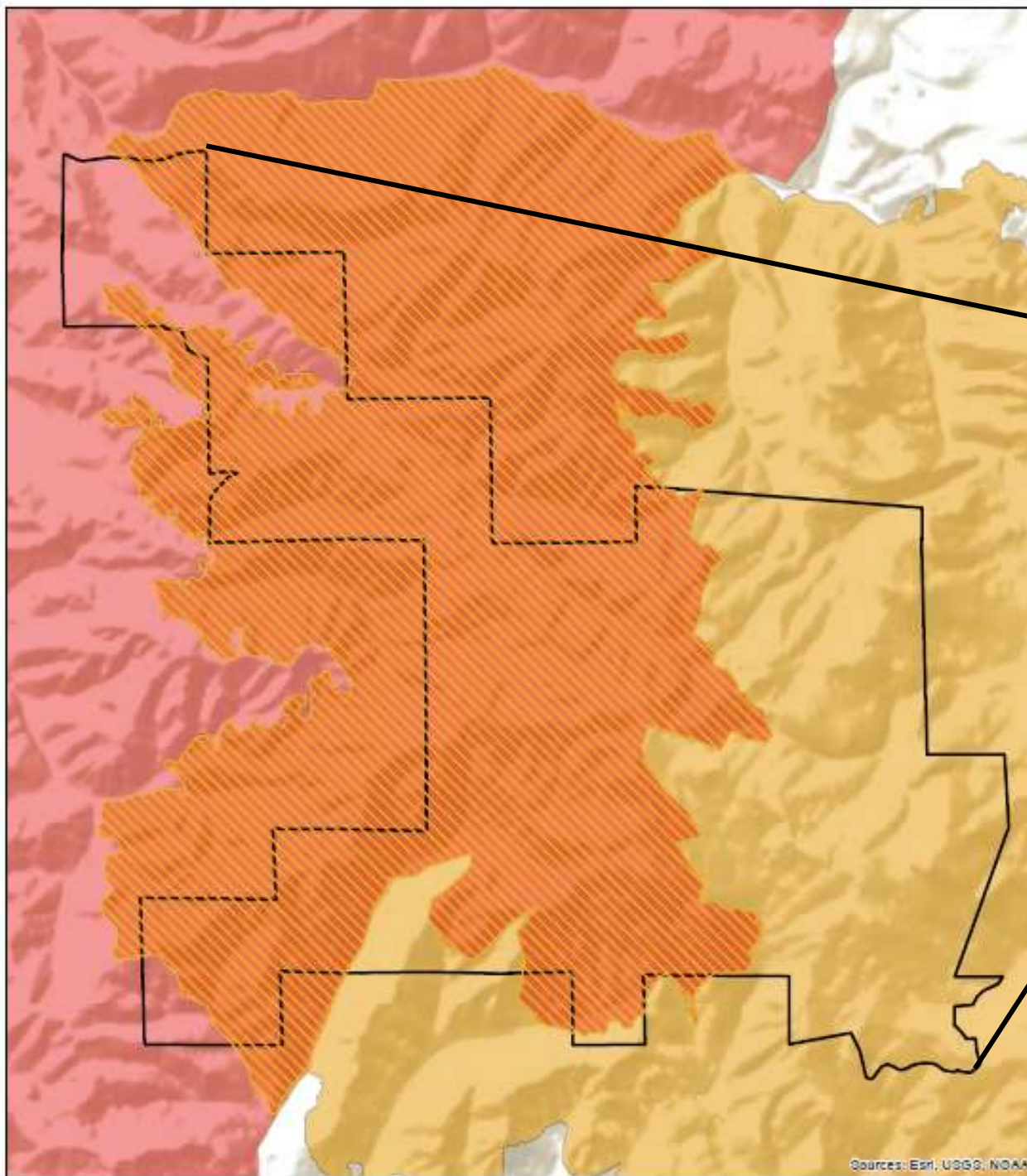
Improve
stewardship and
accelerate climate
adaptation



Fire History – 2010-2020



<https://www.wildfirefuelfmapper.org/>

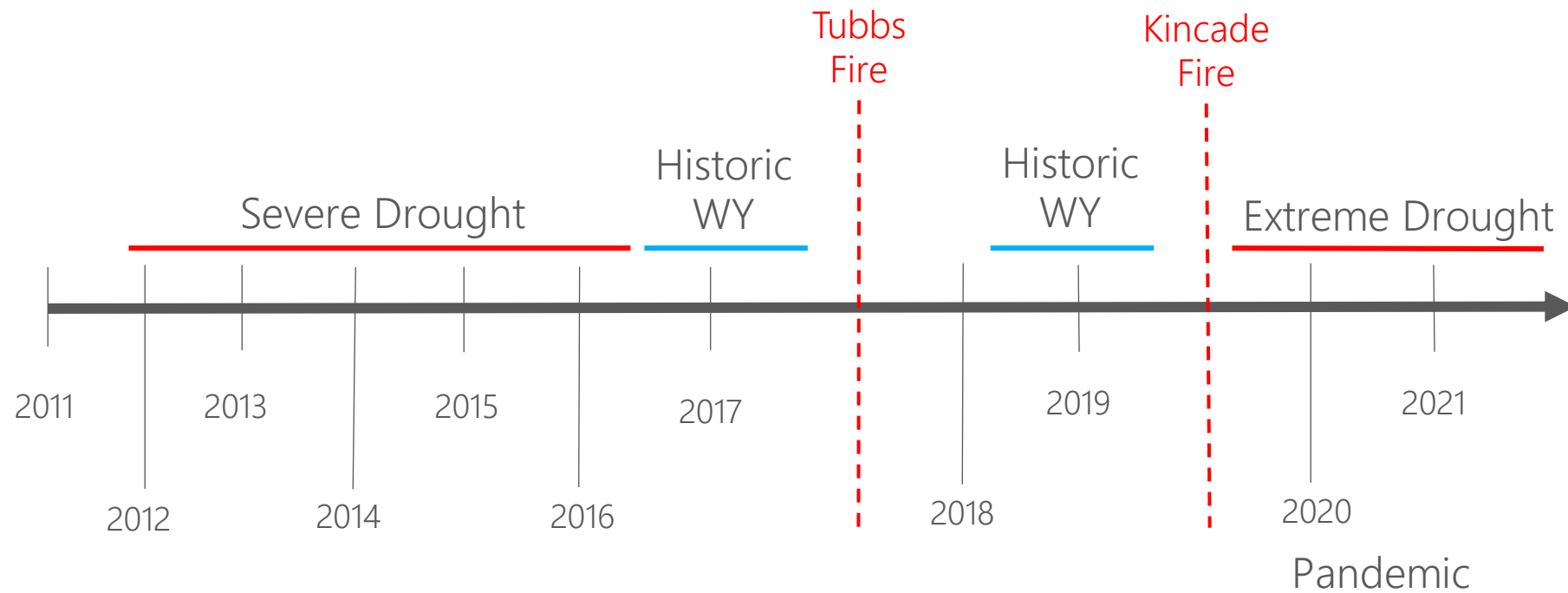




Pepperwood's Native Advisory Council



Disturbance Timing





Pepperwood











Fall 2019



Spring 2020



Spring 2021











Pepperwood





Fuels Management



Lessons learned



Lop and scatter
Followed with broadcast Rx burn



Piling Fuel
Followed with pile burning

Lessons learned

Broadcast burning



Current stewardship projects

Before



After







Pepperwood

Blue wild rye – *Elymus glaucus*





Pepperwood

Purple needlegrass – *Stipa pulchra*





Pepperwood



California fescue – *Festuca californica*







Fire flushes the seed bank of broom

Remove the invasive
before they set seed
then we have
reduced the seed
bank



Delayed regeneration



- Second fire helped by removing the biomass of many invaders
- Many of these perennial and bi-annual invaders are just waiting.

-Thistle sp.

- Oblong Spurge (*Euphorbia oblongata*)

- Queen's Anne's Lace (*Daucus carota*)

- Wild Teasle (*Dipsacus fullonum*)

- Fennel (*Foeniculum vulgare*)

-Himalayan Blackberry (*Rubus armeniacus*)



Restoration Opportunity!



Other considerations:

- Equipment loss
- Safety concerns - Hazard trees
- Can be very emotional time for people
- Livestock needs





THANK YOU

Michael Gillogly mgillogly@pepperwoodpreserve.org