

How to be a Responsible Applicator

Jim Hartman
LA Co. Agricultural
Commissioner/Weights &
Measures



**“Good judgement is the result of experience
and experience comes from bad judgement”**

Mark Twain



So, what does the CCR say?

General Standards of Care 6600



Use only pest control equipment which is in good repair and safe to operate



Perform all pest control in a safe and effective manner



Use only methods and equipment suitable to insure proper application of pesticides



Perform all pest control under climatic conditions suitable to insure proper application of pesticides



Exercise reasonable precautions to avoid contamination of the environment



CCR 6614

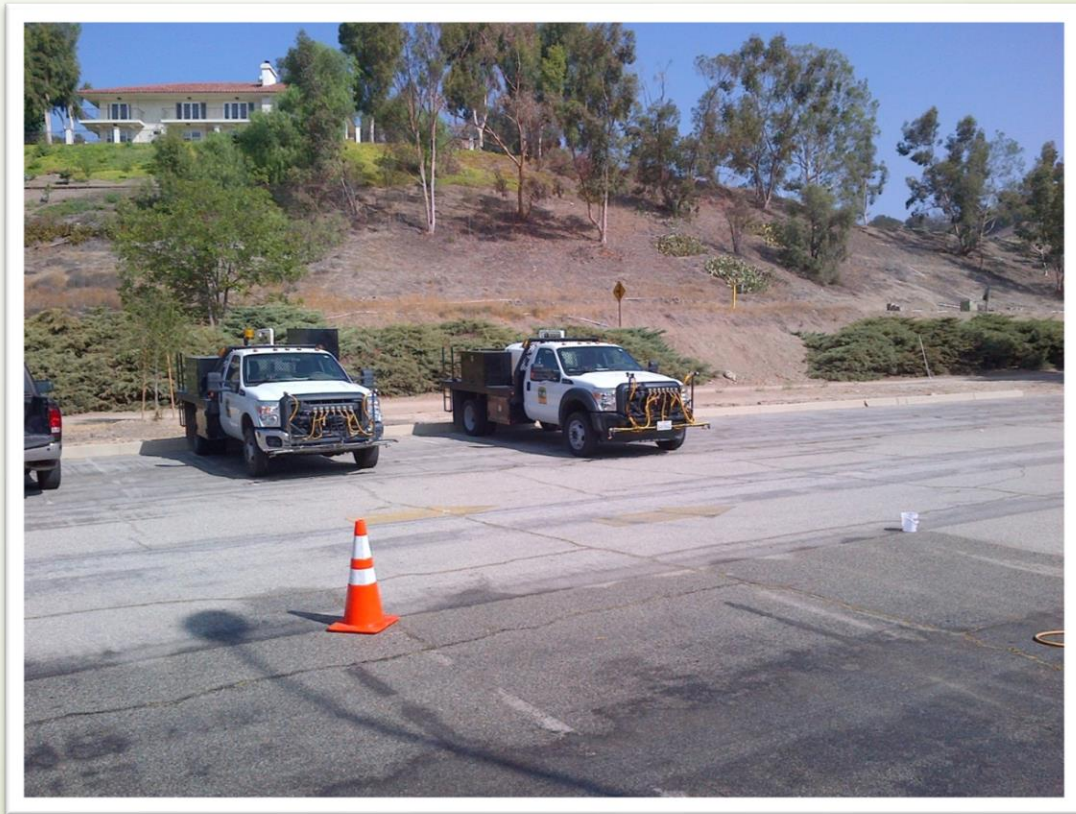
Protection of Persons, Animals and Property



An applicator shall prior to and while applying a pesticide shall evaluate :



Equipment to be used



Metrological conditions



The property to be treated



And surrounding properties



To determine the likelihood of harm or damage



Substantial drift needs to be prevented and no application shall be made or continued when:



Definitions:

Drift = the movement of chemical vapors from the area of application to an off-target site



Definitions:

Volatilization = the movement of a chemical from a liquid (or solid) phase to a gas phase, such as evaporation from soil particle surfaces or water to the atmosphere



There is a reasonable possibility of contamination of bodies or clothing of persons not involved in the application process



There is a reasonable possibility of damage to:

Non-target crops



Animals



Other public or private property



Or there is a reasonable possibility of contamination of nontarget public or private property



Including a health hazard preventing the use of that property



In determining a health hazard several factors are considered

- **Amount and toxicity of the pesticide**
- **Type and related uses of the property**
- **Other related factors**

Other Code Sections to know:

CCR 6678 – Service Container Labeling

- Name & Address of person or firm responsible for the container
- The identity of the economic poison in the container
- The signal word in accordance with the original label on the container



CCR 6602 Availability of labeling

A copy of the registered label that allows the manner in which the pesticide is being used shall be available at each use site

Specimen Label

Dow Dow AgroSciences

Gallery[®]

SC

SPECIALTY HERBICIDE

Trademark of The Dow Chemical Company ("Dow") or an affiliated company of Dow.

A preemergence herbicide for control of certain broadleaf weeds in:

- Established Turfgrass
- Landscape Ornamentals
- Container Grown Ornamentals
- Field Grown Ornamentals
- Groundcovers/Perennials
- Non-Cropland Ornamental Bulbs
- Christmas Tree/Conifer Plantations

Group	21	HERBICIDE
Active Ingredients:		
Isoproturon, 70 (2,4-dichlorophenyl)-2-methylpropyl-5-methoxy-2,6-dimethylcarbamate	40.40%	
Other Ingredients	59.60%	
Total	100%	

Contains 4.16 lb active ingredient per gallon.

Precautionary Statements

Hazards to Humans and Domestic Animals

EPA Reg. No. 65719-058

CAUTION

Prolonged or Frequently Repeated Skin Contact May Cause Allergic Reactions in Some Individuals

Personal Protective Equipment (PPE)

Applicators and other handlers must wear:

- Long-sleeved shirt and long pants
- Gloves plus socks
- Chemical resistant gloves

Follow the manufacturer's instructions for cleaning/maintaining PPE. If no such instructions for washing exist, use detergent and hot water. Keep and wash PPE separately from other laundry.

User Safety Recommendations

Users should:

- Wash hands before eating, drinking, chewing gum, using tobacco or using the toilet.
- Remove clothing/PPE immediately if pesticide gets inside. Then wash thoroughly and put in clean laundry.

Environmental Hazards

Do not apply directly to water, to areas where surface water is present, or to intertidal areas below the mean high water mark. Salt may result in reduced germination or emergence of non-target plants adjacent to treated areas. Do not contaminate water when cleaning equipment or disposing of equipment washwaters.

Ground Water Advisory: This pesticide has properties and characteristics associated with chemicals absorbed in ground water. This chemical may leach into ground water if used in areas where soils are permeable, particularly where the water table is shallow.

Surface Water Advisory: This pesticide may impact surface water quality due to runoff or rain water. This is especially true for poorly draining soil and soils with shallow ground water. This product is classified as having a high potential for reaching surface water via runoff for several months or more after application.

Directions for Use

It is a violation of Federal law to use this product in a manner inconsistent with its labeling.

Read all Directions for Use carefully before applying.

Do not apply this product in a way that will contact workers or other persons, either directly or through drift. Only protected handlers may be in the area during application. For any requirements specific to your state or tribe, consult the agency responsible for pesticide regulation.

Agricultural Use Requirements

Use this product only in accordance with its labeling and with the Worker Protection Standard, 40 CFR Part 170. This Standard contains requirements for the protection of agricultural workers on farms, forests, nurseries, and greenhouses, and handlers of agricultural pesticides. It contains requirements for training, decontamination, notification, and emergency assistance. It also contains specific instructions and exceptions pertaining to the statements on this label about personal protective equipment (PPE), restricted-entry interval. The requirements of this law only apply to uses of this product that are covered by the Worker Protection Standard.

Do not enter or allow worker entry into treated areas during the restricted entry interval (REI) of 2 hours.

PPE required for early entry to treated areas that is permitted under the Worker Protection Standard and that involves contact with anything that has been treated, such as plants, soil, or water, is:

- Chemicals
- Chemical resistant gloves made of any waterproof material
- Shoes plus socks

Non-Agricultural Use Requirements

The requirements of this law apply to uses of this product that are NOT within the scope of the Worker Protection Standard for agricultural pesticides (40 CFR Part 170). The REI applies when this product is used to produce agricultural plants for farms, forests, nurseries, or greenhouses.

Entry Restrictions for Non-APR Users: Other than this product is applied to turf and ornamental plantings in landscape settings and non-cropland areas, do not allow entry into treated areas until signs have dried, unless wearing coveralls, waterproof gloves, and shoes plus socks.

Storage and Disposal

Do not contaminate water, food or feed by storage or disposal.

Pesticide Storage: Store in original container. Do not store in direct sunlight. Do not store at temperatures above 120°F. In case of fire or spill, contain material and dispose as waste.

Pesticide Disposal: Wastes resulting from the use of this product must be disposed of on site or at an approved waste disposal facility.

Nonflammable liquid containers 5 gal or less:

Container Handling: Nonflammable container. Do not reuse or refill this container. Offer for recycling if available or puncture and dispose of in a sanitary landfill, or by other procedures allowed by state and local authorities.

Triple rinse or pressure wash container or equivalent promptly after emptying. Triple rinse as follows: Empty the remaining contents into application equipment or a mix tank and drain for 10 seconds after the flow begins to drip. Fill the container 1/4 full with water and recap. Shake for 10 seconds. Pour waste into application equipment or a mix tank or store waste for later use or disposal. Drain for 10 seconds after the flow begins to drip. Repeat this procedure two more times. Pressure wash as follows: Empty the remaining contents into application equipment or a mix tank and continue to drain for 10 seconds after the flow begins to drip. Hold container upside down over application equipment or mix tank or collect waste for later use or disposal. Insert pressure washing nozzle in the side of the container, and hose at about 45° for at least 30 seconds. Drain for 10 seconds after the flow begins to drip. Then offer for recycling if available or puncture and dispose of in a sanitary landfill, or by other procedures allowed by state and local authorities.

CYTROL[®]

Amitrole-T

LIQUID WEEDKILLER

Active Ingredient: 21.1%
Amitrole[®]
Inert Ingredients 78.9%

*3-amino-1, 2, 4-triazole
(1 gallon contains 2 pounds of Amitrole)
EPA Reg. No. 241-60-AA EPA Est. No. 802-OR-1

CYANAMID

CAUTION!

KEEP OUT OF REACH OF CHILDREN

Harmful if swallowed.
Avoid contact with skin, eyes or clothing.

PRECAUCION

AL USUARIO: Si usted no lee inglés, no use este producto hasta que la etiqueta le haya sido explicada ampliamente.
(TO THE USER: If you cannot read English, do not use this product until the label has been fully explained to you.)

Net Contents: 1 Gallon 24704-01 D50

CCR 6604 Accurate Measurement

Pesticides must be weighed or measured accurately using devices which are calibrated to the smallest unit in which the pesticide is being weighed or measured



CCR 6608 Equipment Cleaning



Pest control equipment shall be thoroughly cleaned when necessary to prevent illness or damage to persons, plants or animals from residues of pesticides previously used in the equipment

Don't forget if you are repairing equipment or someone else is, you/they need to wear the same PPE as if you were making an application



CCR 6680 Prohibited Containers for Pesticides

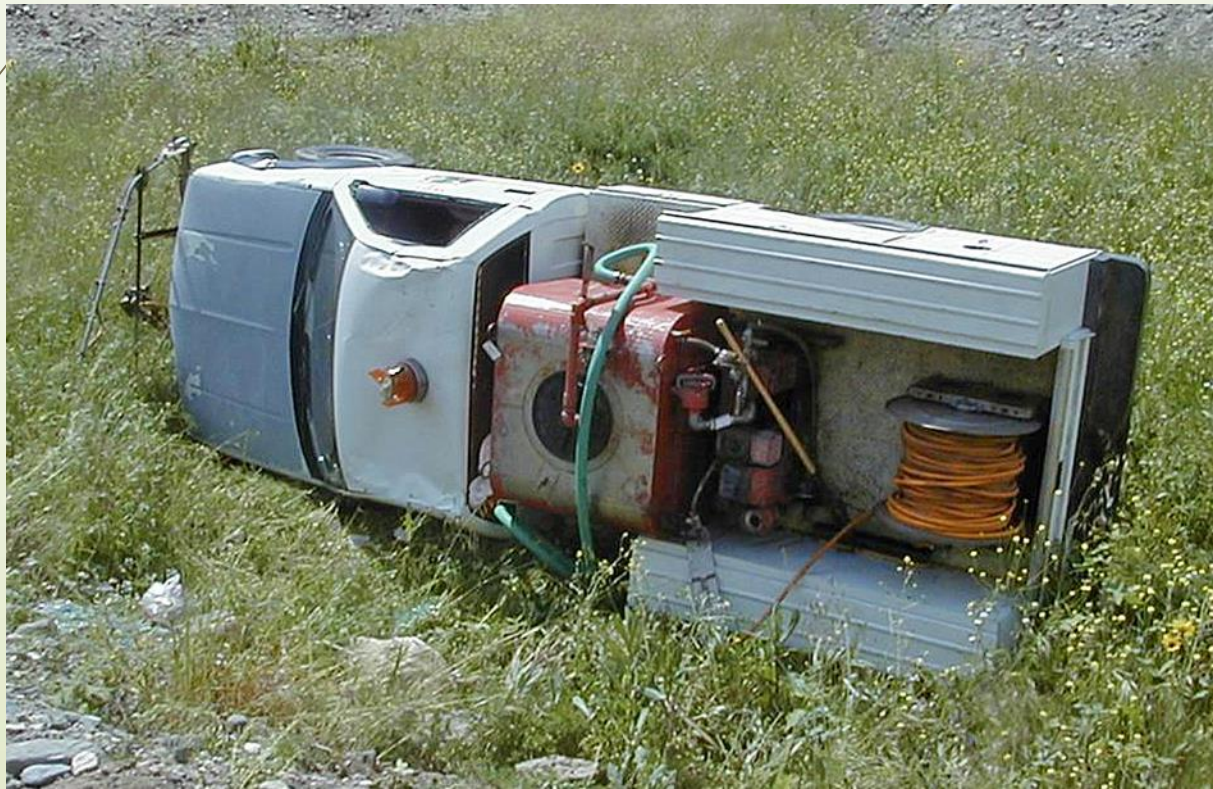
In no case shall a pesticide be placed or kept in any container of a type commonly used for food, drink, or household products



CCR 6682 Transportation

Pesticides shall not be transported in the same compartment with persons, food or feed

Pesticide containers shall be secured to vehicles during transportation in a manner that will prevent spillage onto the vehicle or off the vehicle



CCR 6616 Consent to Apply

Cannot apply a pesticide to property without the consent of owner or operator of the property



Remember that public perception is important

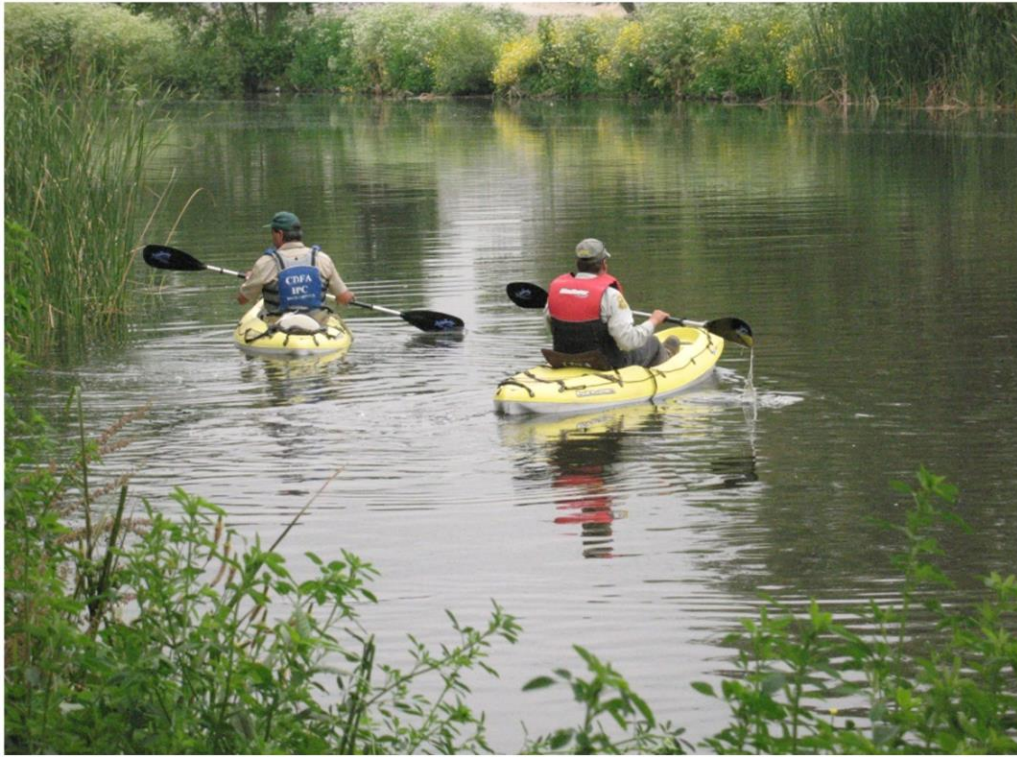


Please

Do not drop your
cigarette butts on the
ground. The rabbits
come out at night
to smoke them.
And we are trying
to get them to quit.



SmartSign.com • 800-932-1427 • 82 1467



Final Thought:

**Before you spray, and
you're not sure – Don't**

**Call your Local Ag
Commissioner**

UC Extension

**Manufacturers technical
Rep**