



AUDUBON CANYON RANCH
FIRE FORWARD
Building Ecosystem Resilience Together

Expanding the use of prescribed fire as an ecosystem stewardship tool in fire- adapted landscapes

Hannah Lopez,
Operational Logistics Manager

November 2, 2022

AUDUBON CANYON RANCH
acr
conservation in action

Audubon Canyon Ranch's Fire Forward Program

► Organize Community

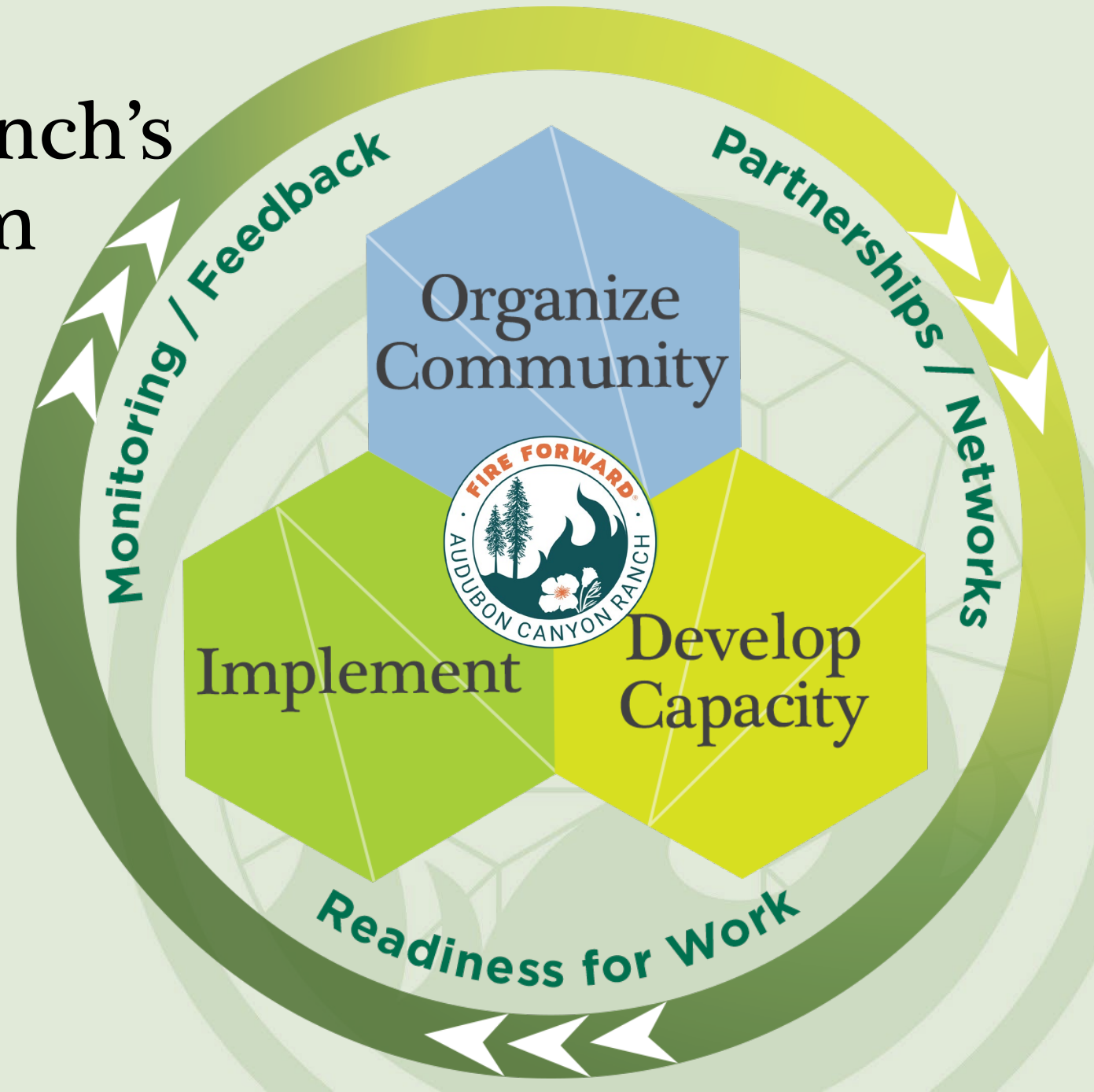
Creating networks around a shared purpose of effective fuel management.

► Develop Capacity

Building our region's capacity to accomplish this work through trainings and equipment sharing.

► Implement

Cooperatively implementing ecologically sound fire and fuels treatments on ACR preserves and partners' lands.



Implementation: Plan, Organize, and Lead Burns



Photos by Sashwa Burrous

Fire Use – Grassland Invasive Plants



Nathan Belliston

Fire Use – Sonoma Land Trust YST



Photos by David Leyva

Fire Use – Medusa head reduction and control in native grasslands



Drone photos by Ryan Ferrell

Training and Implementation– Fire Forward's Fellowship Program



Photos by Ian Nelson:
instagram @ital_ian, iananelson.com



Thank You!

Fire Forward is funded in part by:

- ▶ Farley Family Charitable Foundation
- ▶ Coastal Conservancy
- ▶ Federated Indians of Graton Rancheria
- ▶ California Deer Association
- ▶ Mystery Ranch
- ▶ CAL FIRE

and many generous members and supporters of ACR.
We welcome your involvement!

- ▶ Become an ACR member
- ▶ Join the Good Fire Alliance
- ▶ Share @AudubonCanyonRanch

Reach me at hannah.lopez@egret.org

LEARN MORE > www.egret.org

Fire Use – Grassland Invasive Plants

Control of Invasive Weeds with Prescribed Burning

Published online by Cambridge University Press: 20 January 2017

Joseph M. DiTomaso, Matthew L. Brooks, Edith B. Allen, Ralph Minnich, Peter M. Rice and
Guy B. Kyser

[Show author details](#) ▼

The Use of Prescribed Fire to Control Invasive Exotic Weeds at Jepson Prairie Preserve

OREN POLLAK AND TAMARA KAN

The Nature Conservancy, 201 Mission Street, 4th Floor, San Francisco, CA 94105
(opollak@tnc.org and tkan@tnc.org)

THE USE OF FIRE FOR YELLOW STARThistle (*Centaurea solstitialis*)
MANAGEMENT AND THE RESTORATION OF NATIVE GRASSLANDS AT SUGARLOAF
RIDGE STATE PARK

by Marla S. Hastings and Joseph M. DiTomaso