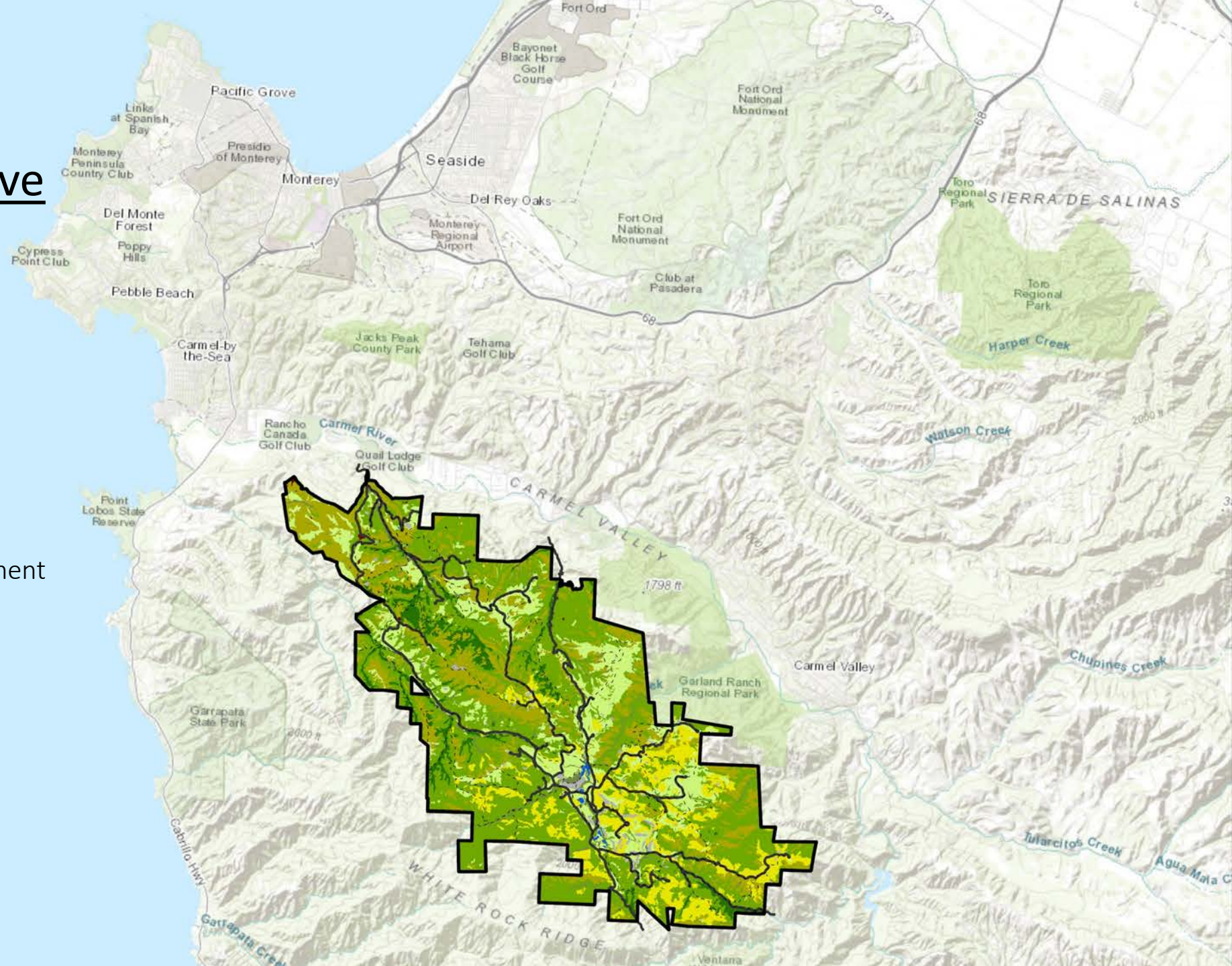


Managing to Promote Biodiversity Across Property Lines in California Central Coast

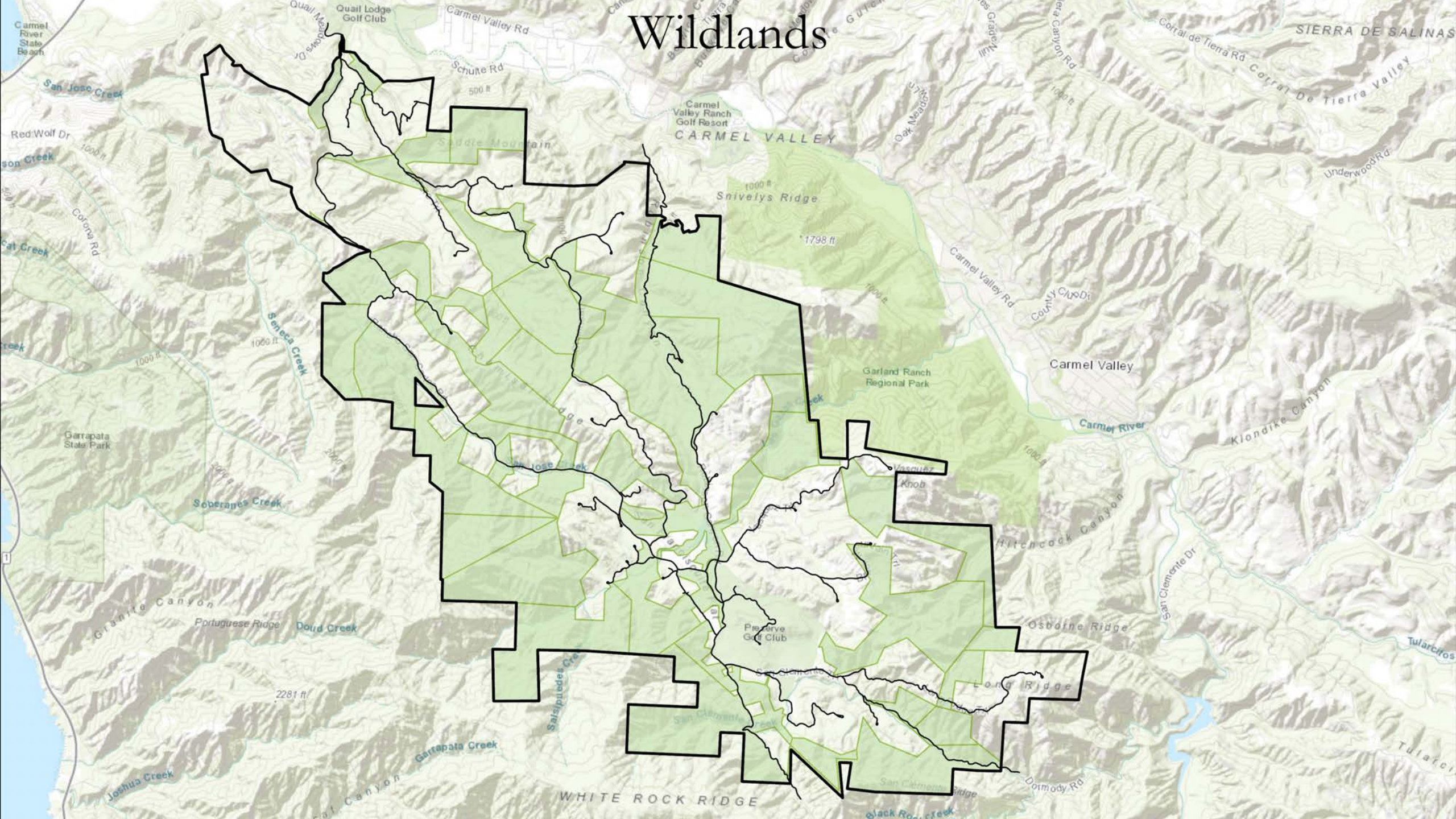
Jenna Allred
Santa Lucia Conservancy

The Santa Lucia Preserve

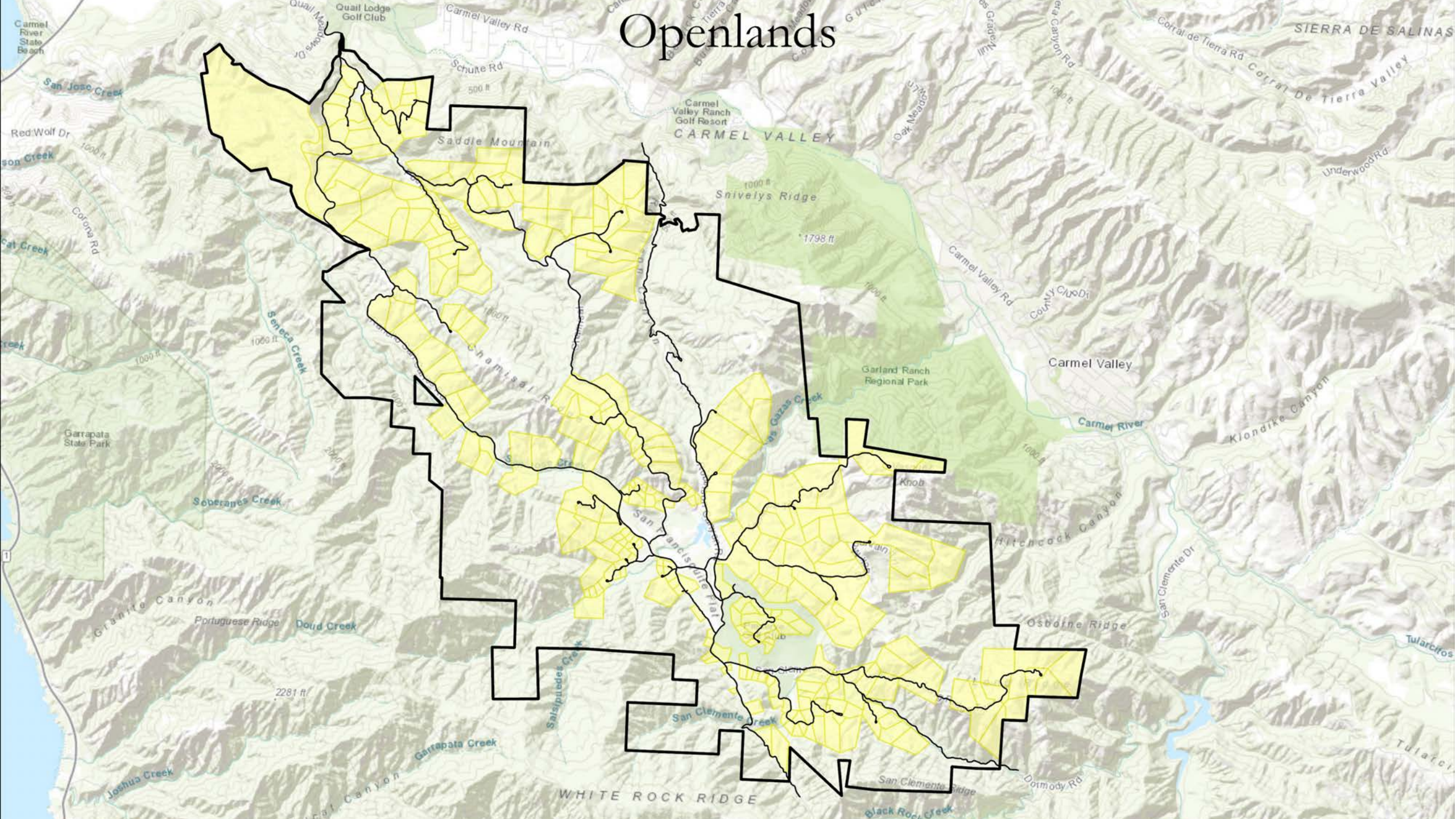
- Located in Carmel, CA
- 20,000-acre Conservation Development
- 90% Permanently Protected



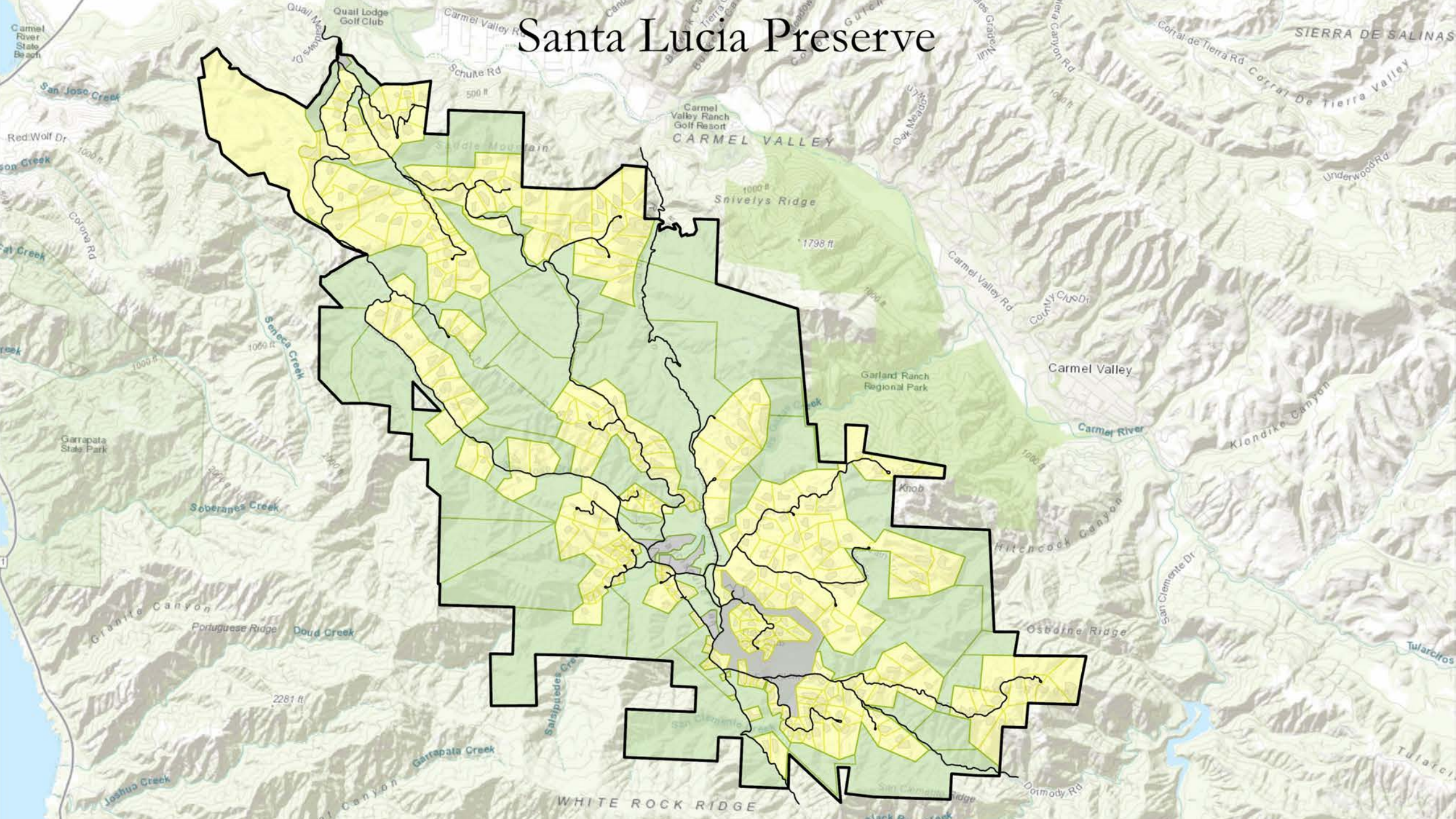
Wildlands



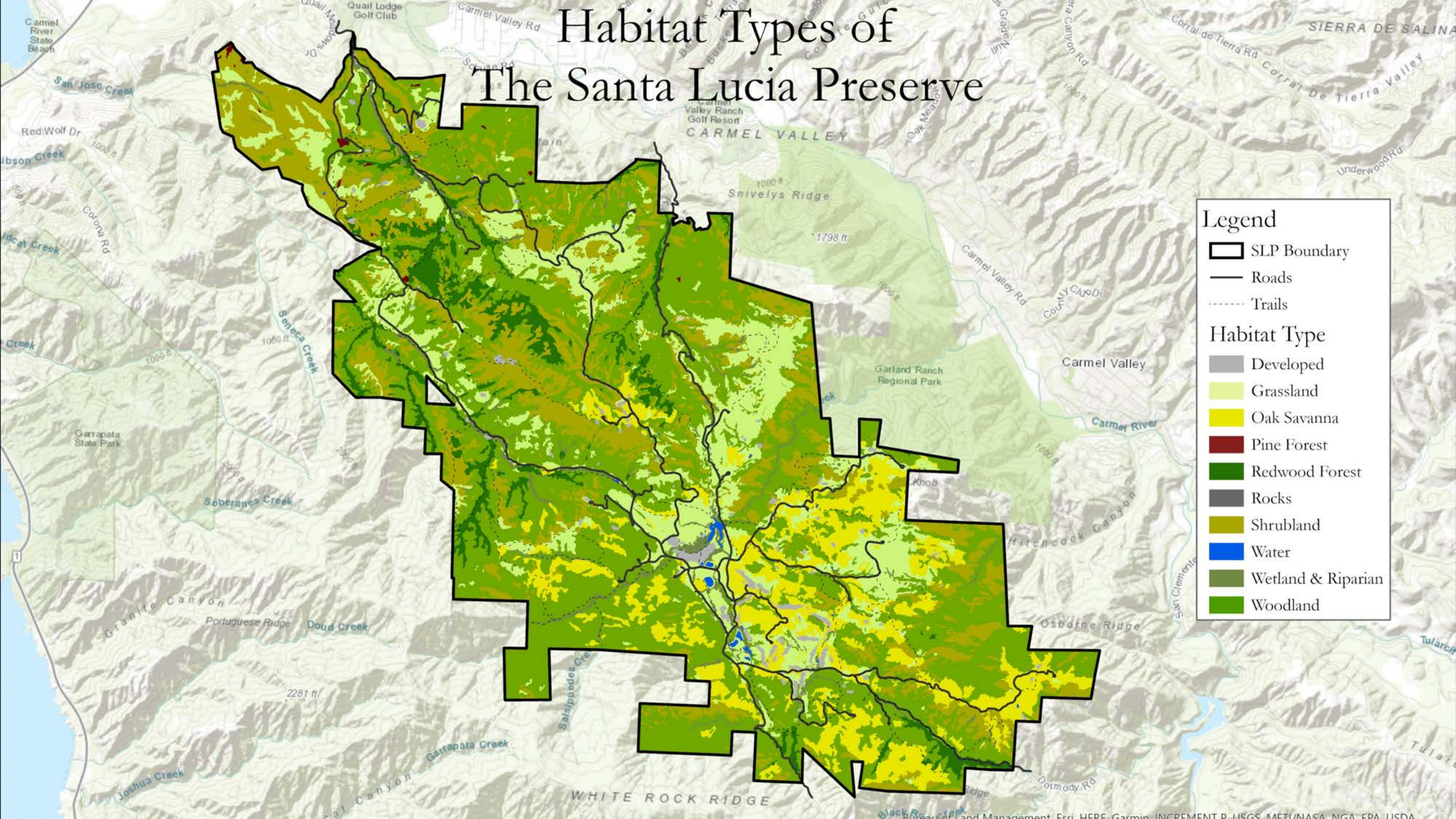
Openlands



Santa Lucia Preserve



Habitat Types of The Santa Lucia Preserve











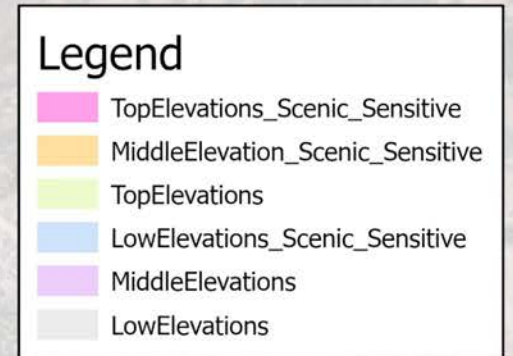


The background of the slide is a photograph of a grassy hillside under a clear blue sky with a few clouds. In the foreground, there are tall, green and white wildflowers. A large, semi-transparent white circle is overlaid on the left side of the image, containing the title and a list of bullet points. The title "Grasslands Initiative" is in a large, black, sans-serif font. Below it is a short horizontal line. The list of bullet points is in a smaller, black, sans-serif font.

Grasslands Initiative


- Promote native diversity within the **5,500** acres of grasslands in the Wildlands
- Decrease brush encroachment
- Manage invasive plant species
- Conservation Grazing Program
- Prescribed Fire

Weed Prioritization Map



0 0.5 1 2 Miles



The background image shows a green tractor with a red brush-cutting implement working in a field of dry, yellowish-brown brush. The tractor is positioned in the middle ground, moving towards the right. Behind the tractor is a dense line of green shrubs and bushes. In the far background, a thick forest of tall, dark green trees covers a hillside. The scene is lit by bright sunlight, creating a warm, golden glow. A large, semi-transparent white circle is overlaid on the left side of the image, containing the title and list.

Brush Encroachment

- 50 Acres treated annually
- Mastication/mowing
- Herbicide treatments
- Funding by NRCS EQIP partnership

Conservation grazing

- 2000 grazed acres
- Thatch reduction
- Nutrient cycling
- Weed trampling and consumption



Prescribed Fire

- Fuel Management
- Disturbance regime recovery



Invasive Plant Management

- 500 acres of invasive plant treatments
- Focus on areas with low density pushing into high density areas

















Openlands Management Plans

- Adaptive prescription for land management on Openlands
- 3-year timeline
- Ongoing advice and annual check-in with Conservancy staff



Openlands Management Plan

Lot: 8

Owner: Homeowner

This **Openlands Management Plan** does not constitute a formal recommendation. When using herbicides always read the label and consult a Pest Control Advisor or county agent. *Treatments described to manage invasive weeds in the Openlands may also be used to treat any emerging weeds within the Homeland.*

Ecosystem types:

☒ **Woodland/Forest** ☒ **Chaparral/Coastal Scrub** ☐ **Riparian/Wetland**

☒ **Grassland/Savanna**

Management Goals:

- Manage invasive species: French broom, poison hemlock, bull thistle
- Manage coyote brush encroachment

Implementation Plan:

Year 1

Manage new French broom throughout lot by hand removal. Hand removal is easiest performed after the rain has loosened the soil. Use a weed wrench in areas where needed. The Conservancy has several models that can be loaned out if needed.

Manage poison hemlock and bull thistle through hand pulling and spot mowing. Hand-pulled plants with flowers and/or seeds should be bagged and disposed of offsite. Spot mowing should be performed with a string trimmer before the plant has set seed.

Year 2

Implementation Schedule:

Coordination of cattle grazing, manual, mechanical, and chemical treatments is important to achieve management goals. Consultation with the Conservancy for appropriate treatment selection and timing is a requirement of this plan.

Actions/Treatments	Timing	Roles	Special Considerations
Manually remove French broom with weed wrench or by hand pulling.	December 2021 – April 2022	Landowner	Remove entire root to ensure no regrowth will occur.
Manually remove poison hemlock and bull thistle.	January – July 2022	Landowner	Must cut root 4 inches below ground level. Check back for re-sprouts. Cut and bag flower heads. Retreat as more begin to bloom.
Spot Spray French broom, coyote brush, and thistle	February – April 2022	Landowner	Spray seedling up to flower bud stage. Once flowering, spray is not as effective.
Spot Spray poison hemlock and coyote brush;	February – May 2022	Landowner	Spray seedling up to flower bud stage. Once flowering, spray is not as effective.
Spot mow thistles and poison hemlock with a string trimmer.	April – July 2022	Landowner	Spot mow after plants have bolted but before they seed.

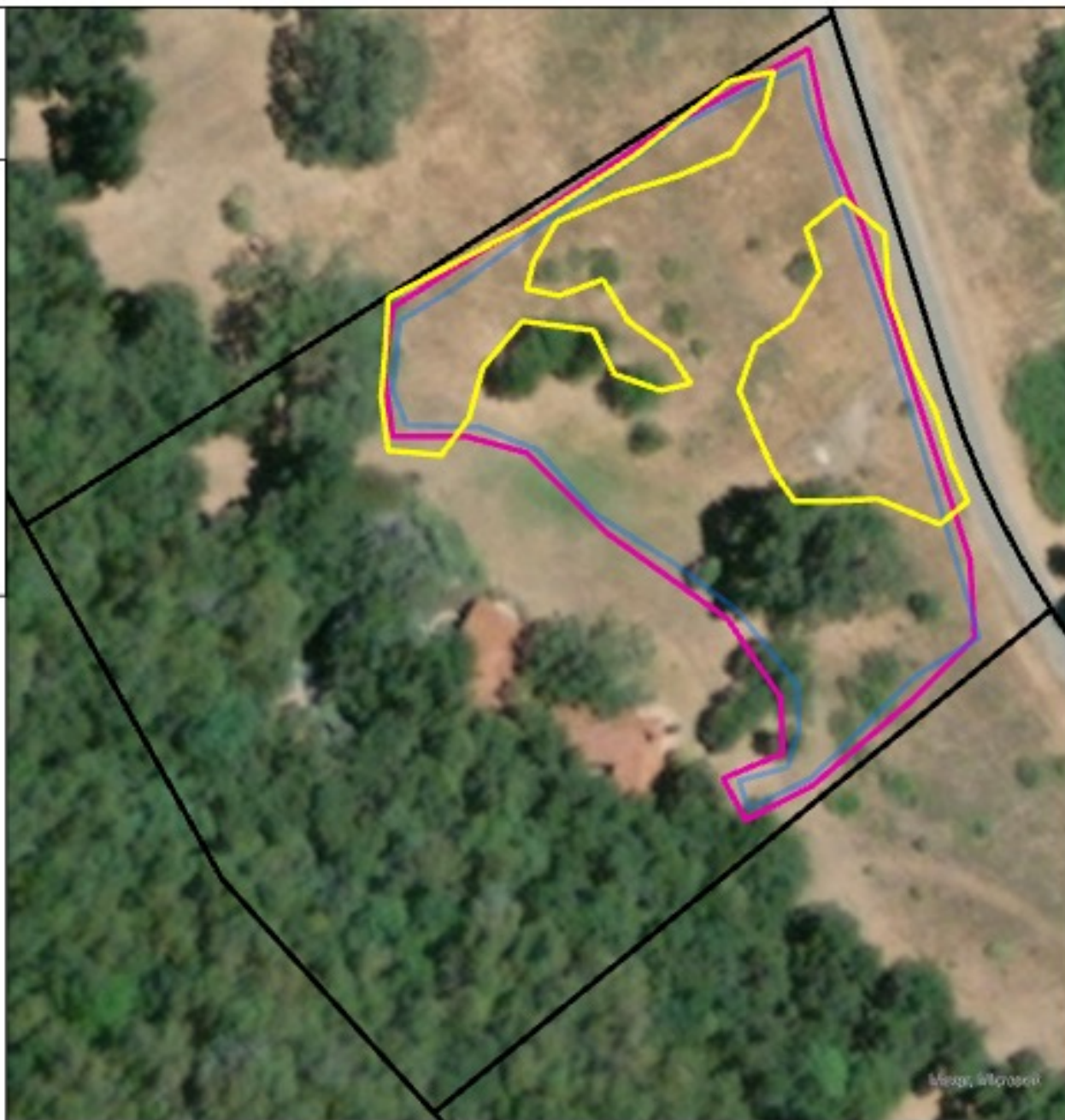
Lot ## Treatment Map

Legend

- Mustard Treatment Area
- Thistle Treatment Area
- Poison Hemlock Treatment Area
- Homelands
- Openlands

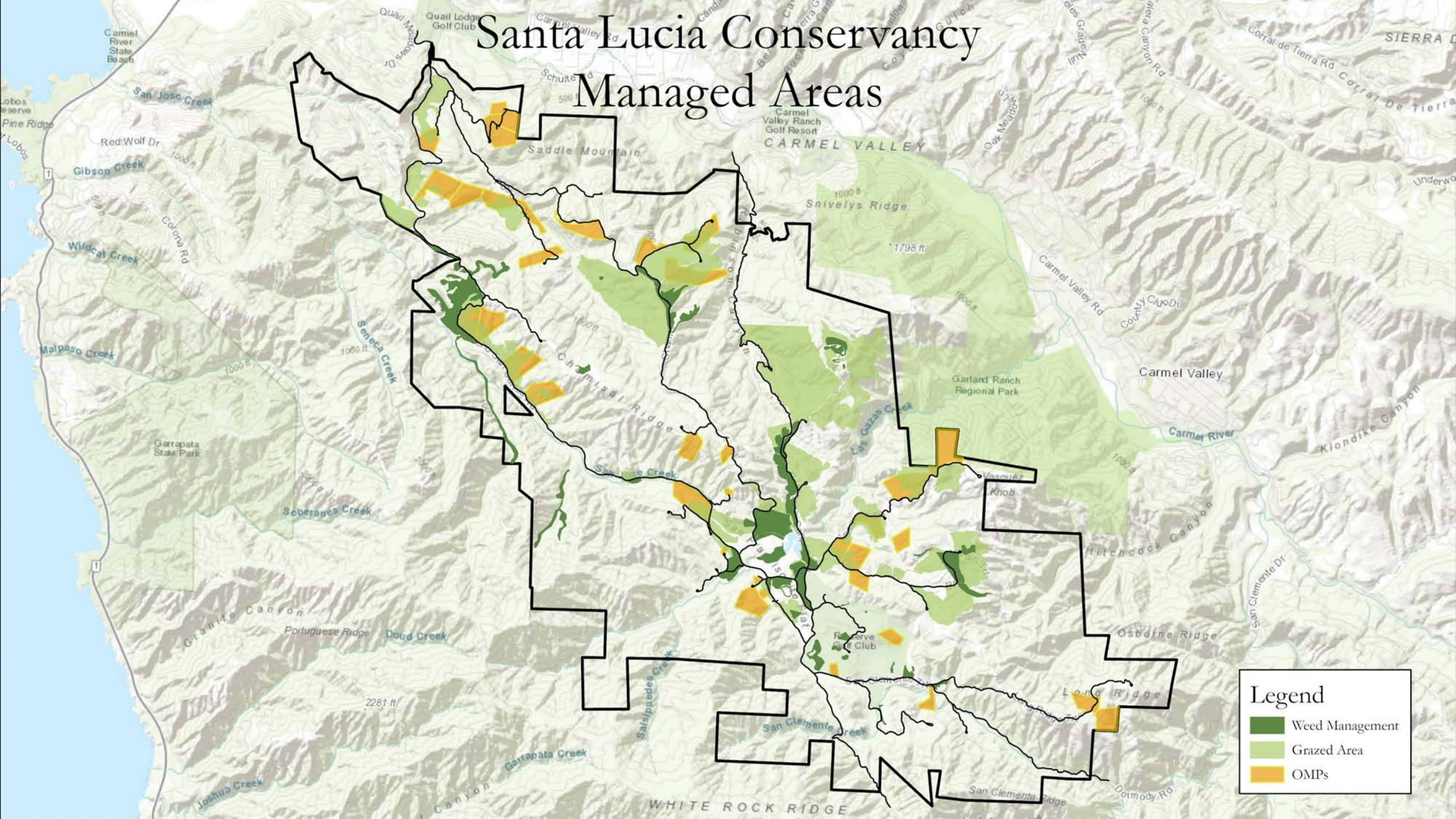


0 0.01 0.01 0.03 Miles





Santa Lucia Conservancy Managed Areas





www.slconservancy.org

Thank you!

Any questions please email
jallred@slconservancy.org