

An aerial photograph of a forest with a dirt road winding through it. The trees are mostly green, with some yellow and orange foliage visible near the bottom edge, suggesting autumn. A body of water is visible at the very bottom of the frame.

Conserving a Global Biodiversity Hotspot: Aligning 30x30 goals at the state and global scale

Cal-IPC Annual Symposium
30x30 panel

October 29, 2021

Dick Cameron, Director of Science for Land and Cities Programs,
Carrie Schloss, Senior Scientist
The Nature Conservancy in California

The Nature Conservancy

- Our mission is to conserve the lands and water on which all life depends.
- Active in California for over 60 years
- Local and global

400
scientists

4,000
conservationists

A FAR REACHING ALUMNI NETWORK
of leaders in the conservation community

72
countries

50
U.S. states

1 MILLION
dedicated members

1,300 prominent
volunteer leaders

30x30: A moment for attention and investment



Nevada Lawmakers Applaud Biden ...
nevadaconservationleague.org



30x30 on Twitter: "Today @POTUS ...
twitter.com



The Conservation Foundati...
boone-crockett.org



World Oceans Day: Sign For Nature 30...
rollingnature.com



Protect the Best on Earth ...
nature.org



Learn — THE ROAD TO ...
roadto30.org



30x30: A Bold Goal to Protect Our Lands ...
conservationco.org



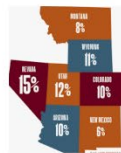
Preserve Biodiversity | Scienc...
scientificamerican.com



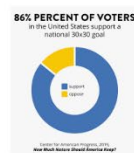
Protecting 30x30 | Center for ...
defenders-coi.org



The IGFA
igfa.org



30x30 - Western Resource...
westernresourceadvocates...



Supporters — American Na...
natureamerica.org

Governments and businesses now have an opportunity to take a critical, collective step to arrest this decline:
TO AGREE TO PROTECT AT LEAST 30% OF THE WORLD ON LAND AND SEA.

Protect the Best on Earth ...
nature.org



30x30 (@Protect30x30) | Twitter
twitter.com



Vanishing Natural Areas | WingsPrings
wingsprings.wordpress.com



Andes Amazon Fund
andesamazonfund.org



NRDC 🌍 on Twitter: "30x30 is ...
twitter.com



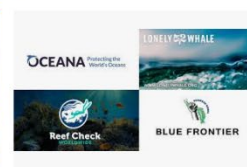
About
hunfish3030.com



2021 Social Media Toolkit - World ...
worldoceanday.org



30x30: A Blueprint for O...
greenpeace.org



30 Ocean Conservation Organizations ...
planetconsolidian.com



Sign the 30x30 Petition Today ...
campaignformature.org



Sea Change Project - In sup...
facebook.com





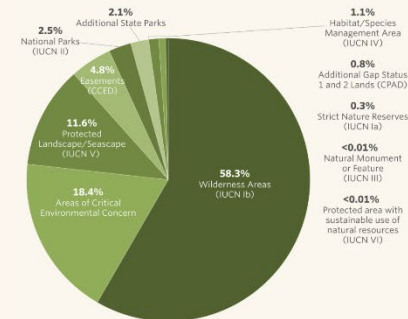
Need to link extinction and climate
crises and make conservation serve
broader goals

Key questions for 30x30

- What does “conserved” or “protected” mean?
- What is well or poorly represented in conservation lands now?
- What to protect next?
- What about management/stewardship?
- How to design priorities to serve broader goals?



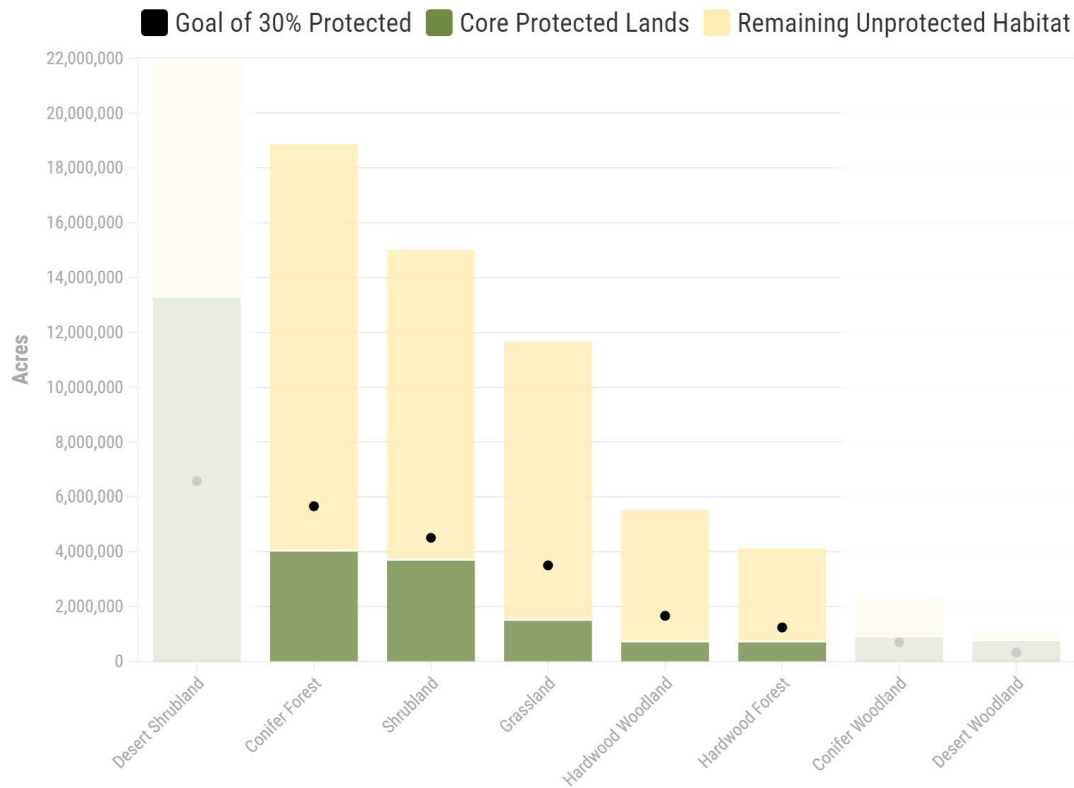
This pie chart shows the composition of land protection categories in this one potential network. With this analysis, we are not proposing a definition of what lands should count toward 30x30, but rather illustrating patterns of protection given one plausible definition of 30x30 protected lands.



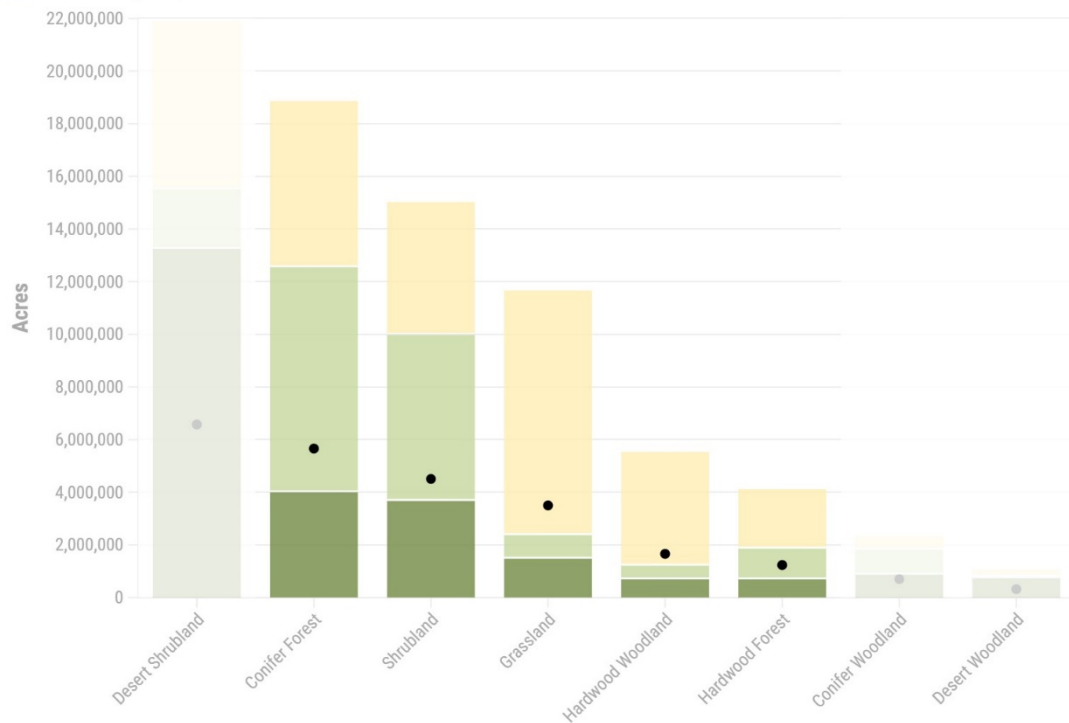
[Download Methods Documentation](#)

A Storymap: [Conserving a Global Biodiversity Hotspot](#)



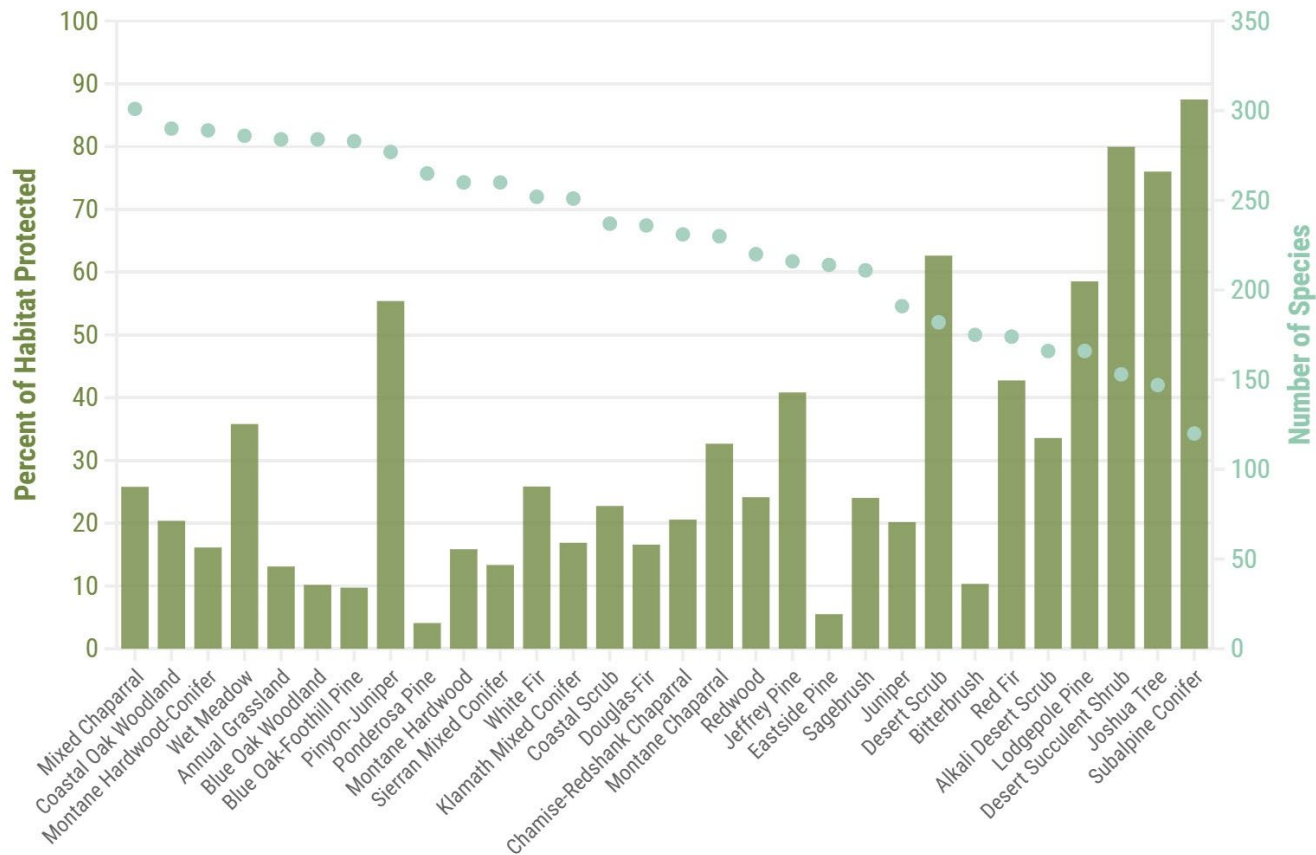


■ Goal of 30% Protected ■ Core Protected Lands ■ Public Lands Managed for Multiple Uses
 ■ Remaining Unprotected Habitat



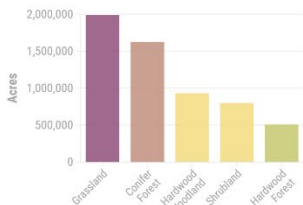
Vertebrate Richness and Protection by Habitat

Species Habitat Protected



acres of them.)

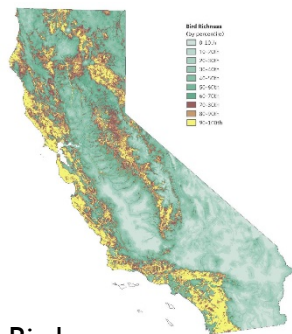
**Additional Acres of Protection Needed
To Protect 30% of Each Habitat Statewide**



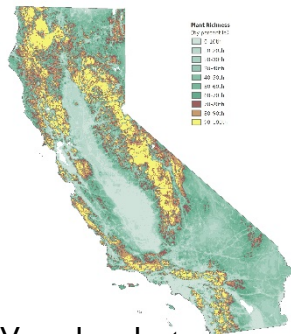
Habitats mapped in **dark green**—conifer woodland, desert shrubland, and desert woodland—are already at least 30% protected.



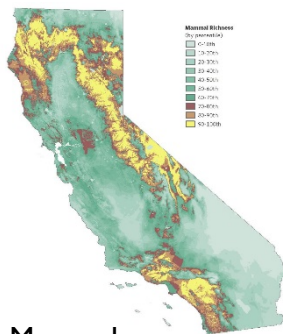
Grasslands and oak woodlands are relatively under-protected and important for global biodiversity.



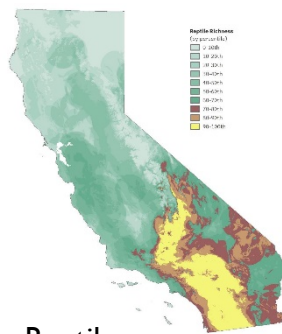
Birds



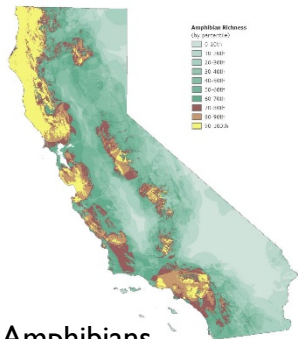
Vascular plants



Mammal



Reptiles



Amphibians

Species Richness



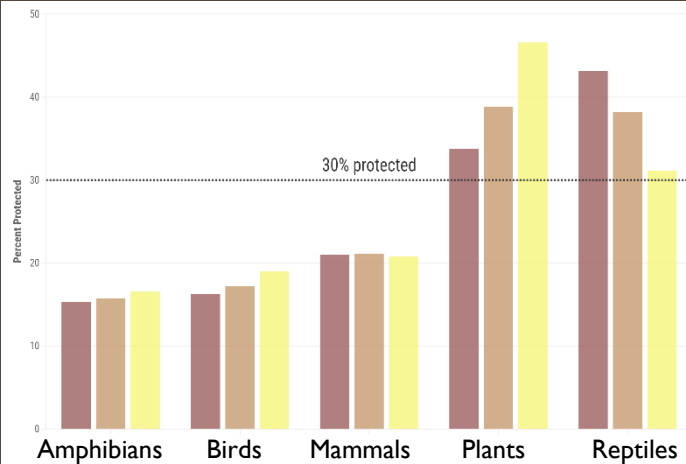
Top 30%

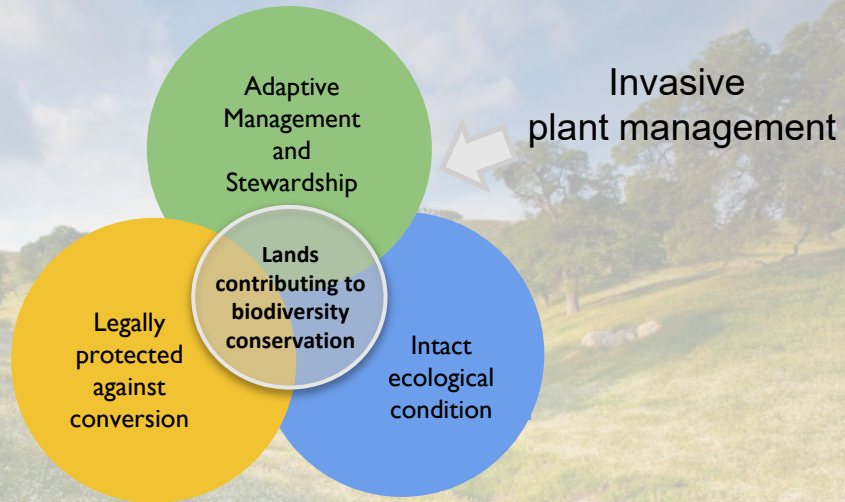


Top 20%



Top 10%





A framework for mapping “effectively conserved” lands?

Search by Species

yellow starthistle

Centaurea solstitialis
yellow starthistle

Get report for species: [PDF](#)



Photo courtesy of Bob Case

Cal-IPC Rating: **High**
CDFA Rating: **C**

Species description

Centaurea solstitialis (yellow starthistle) is a bushy winter annual (family *Asteraceae*) that invades 12 million acres in California. [Yellow starthistle](#) inhabits open hills, grasslands.

[Show More](#)

Additional information: See Cal-IPC's Plant Profile or California's Taxon Report.

Search by Region

Select Region Type

Select Region to Report

[Back to Cal-IPC](#)

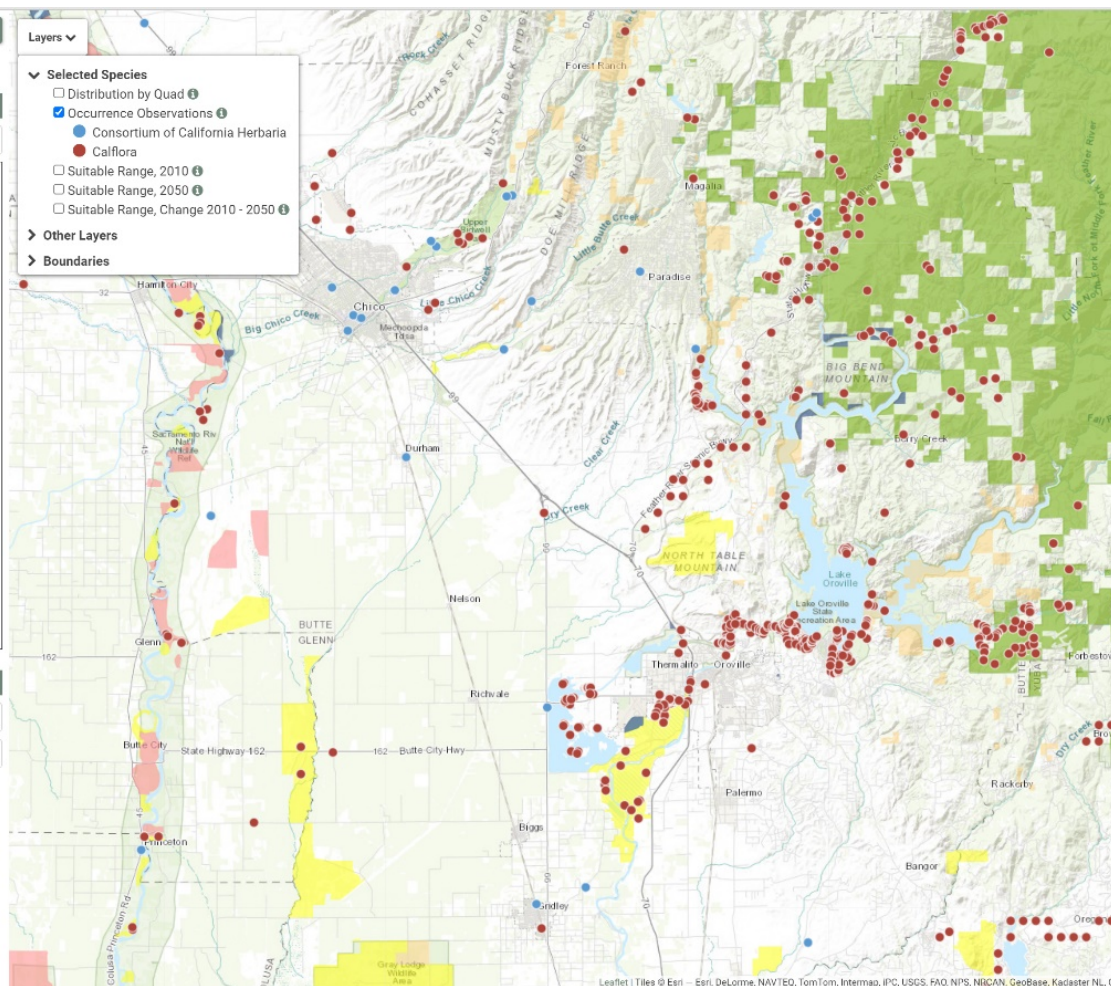
Layers

Selected Species

- ☐ Distribution by Quad
- ☒ Occurrence Observations
 - Consortium of California Herbaria
 - California
- ☐ Suitable Range, 2010
- ☐ Suitable Range, 2050
- ☐ Suitable Range, Change 2010 - 2050

Other Layers

Boundaries



An existing Standard: IUCN Green List

Good Governance

- 1.1 Guarantee Legitimacy and Voice
- 1.2 Achieve Transparency and Accountability
- 1.3 Enable Governance Vitality and Capacity to Respond Adaptively

Sound Design and Planning

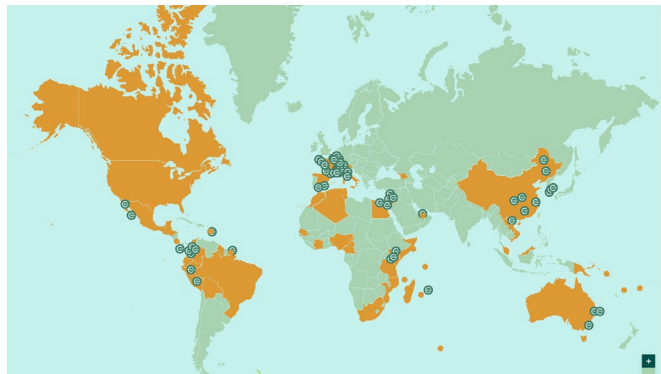
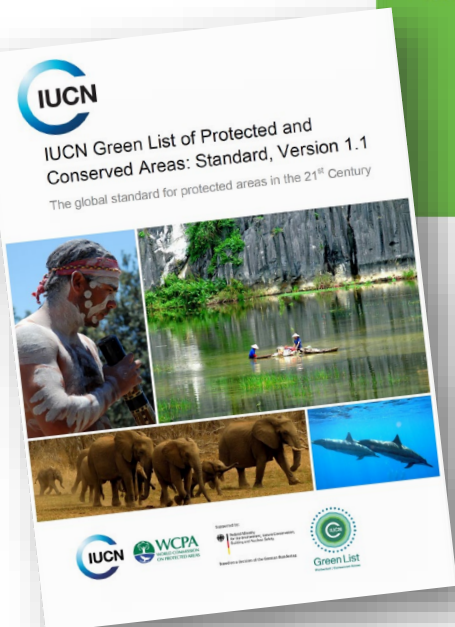
- 2.1 Identify and Understand Major Site Values
- 2.2 Design for Long-Term Conservation of Major Site Values
- 2.3 Understand Threats and Challenges to Major Site Values
- 2.4 Understand Social and Economic Context

Effective Management

- 3.1 Develop and Implement a Long Term Management Strategy
- 3.2 Manage Ecological Condition
- 3.3 Manage Within Social and Economic Context of the Area
- 3.4 Manage Threats
- 3.5 Effectively and Fairly Enforce Laws and Regulations
- 3.6 Manage Access, Resources Use and Visitation
- 3.7 Measure Success

Successful Conservation Outcomes

- 4.1 Demonstrate Conservation of Major Natural Values
- 4.2 Demonstrate Conservation of Major Associated Ecosystem Services
- 4.3 Demonstrate Conservation of Cultural Values





Thank you!

Dick Cameron: dcameron@tnc.org

Story map: <https://arcg.is/1TX1C5>