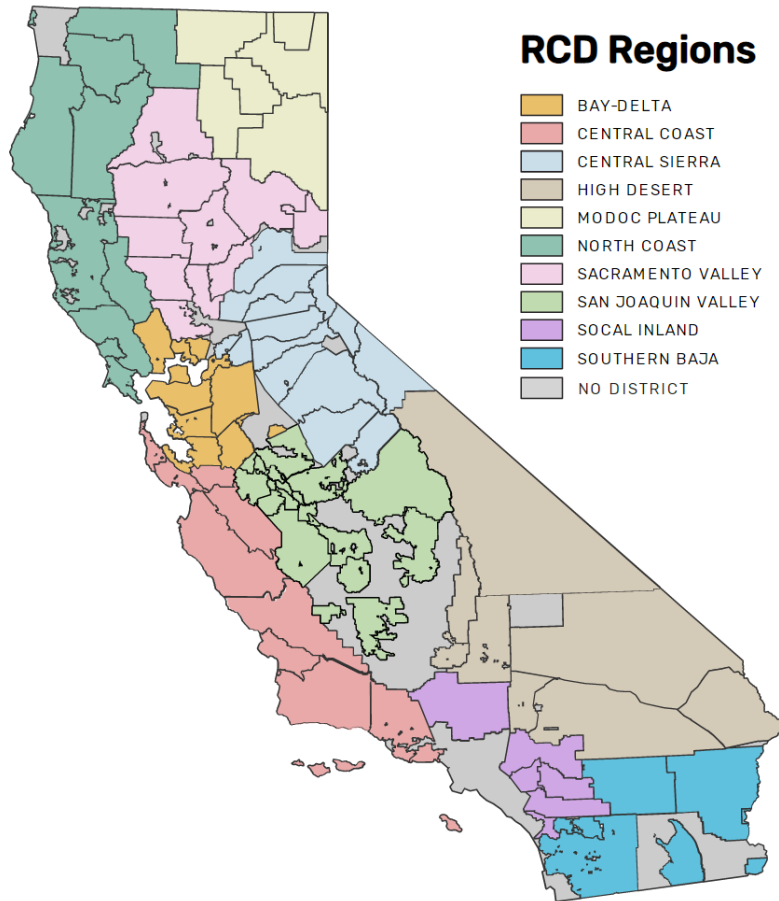




Statewide WMA Meeting
October 27, 2020

Lucas Patzek, Ph.D. Executive Director
Lucas@NapaRCD.org, www.NapaRCD.org



Resource Conservation Districts (RCDs) make conservation happen on-the-ground by partnering with local communities on a voluntary basis to care for California's land, water, soil, and other natural resources.

Find Your RCD
Member Dashboard

[RCDs](#)
[About Us](#)
[Our Work](#)
[Events](#)
[Partners](#)
[Updates](#)
[Support](#)

Cultivating resilience. Amplifying impact. Together.

In support of thriving local communities, landscapes, and economies, we work with Resource Conservation Districts, state and federal agencies, policy makers, and individuals to ensure the resilience and health of California's water, soil, wildlife habitat, and other natural resources – today and for generations to come.

NOTES FROM THE FIELD

2020 CARCD Virtual Conference

From November 12th - 23rd, 2020, the California Association of Resource Conservation Districts (CARCD) will be continuing the tradition of bringing together representatives from federal and state agencies, non-profits, private industries, farming communities, and resource conservation districts (RCDs) to share knowledge, build...

Northern California prescribed-burning community releases video to inspire action

Private-public partnership promotes community-based prescribed burning For immediate release: September 21, 2020 Media contacts: Wendy Coy, Communications Manager, Audubon Canyon Ranch wendy.coy@egret.org | 707-829-9582 Lucas Patzek, District Manager Napa County Resource Conservation District (Napa RCD) lucas@naparcd.org | 707-690-3119 Napa, CA.

Strengthening the RCD Network

There is a broad spectrum of capacity among RCDs. We are leading an unprecedented effort aimed at elevating the statewide network so that districts can collectively achieve their vision of being go-to hubs for conservation in their communities.

Weed Management Area



Napa WMA

Chair: Chaired jointly by the Steering Committee

General contact: Lucas Patzek, lucas@naparcd.org, 707-690-3110

Meetings: In the process of developing a regular meeting schedule.

Outreach Summary:

Events

Cal-IPC's Weed Management Volunteer Training

When: 3/14/2020 at 9:30 AM – 3:00 PM,

Where: Skyline Wilderness Park, 2201 Imola Ave, Napa, CA 94559

Other

Napa County Invasive Plants by Jake Ruygt(pdf)

Cynara cardunculus (Artichoke Thistle)

- This species has been the south part of county for at least 30 years but has increased in numbers from a scattered few plants to hundreds.

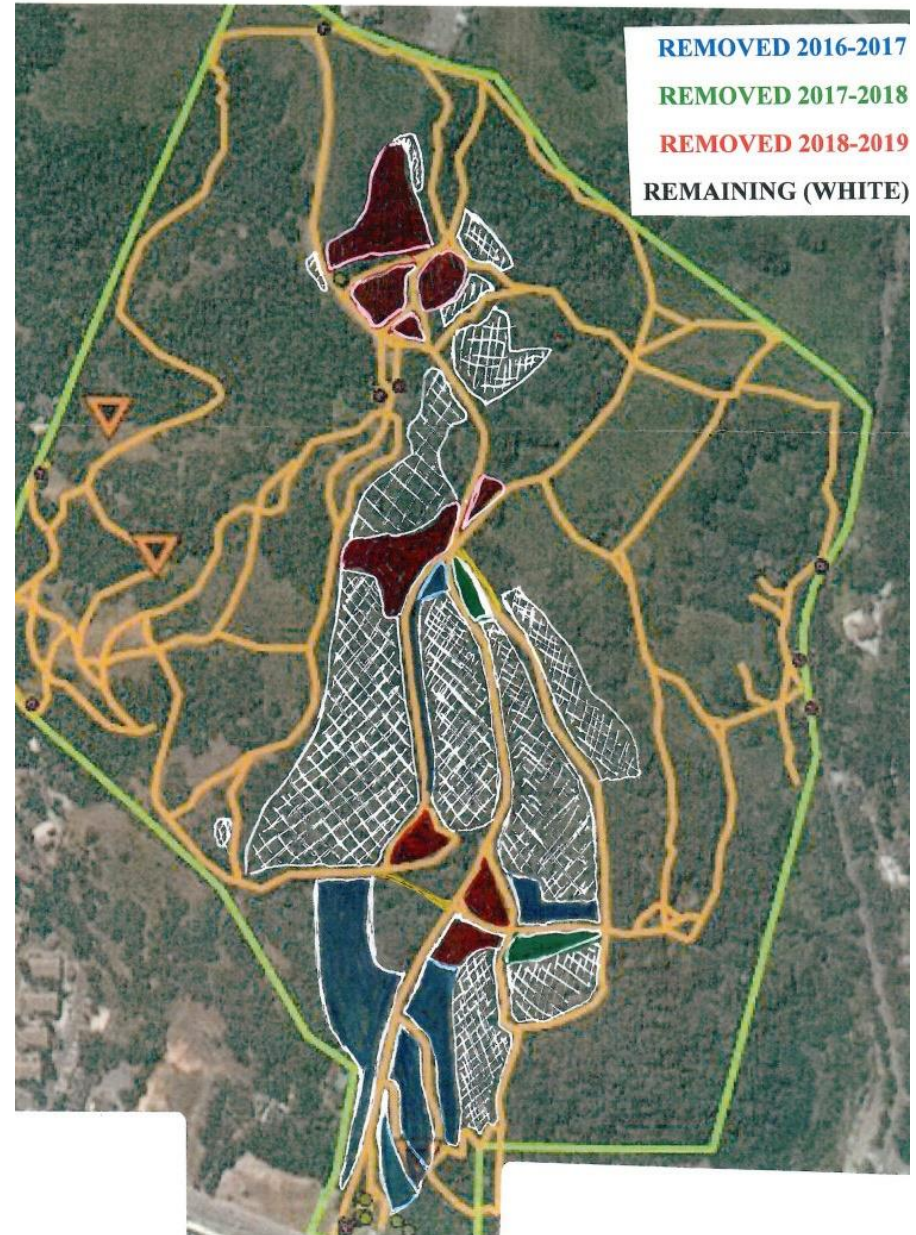


Dittrichia graveolens (Stinkwort)

- This species appeared in Napa County about 2008.
- It has followed vehicle traffic along roadsides but has appeared in several wildlands in recent years.



Education & Volunteer Coordination



Technical & Financial Assistance



Weed Management Planning







Thank you!

Lucas Patzek, Ph.D. Executive Director
Lucas@NapaRCD.org, www.NapaRCD.org