

A vibrant landscape photograph featuring a field of purple flowers in the foreground, with rolling green hills and mountains in the background under a clear blue sky. The sun is shining brightly, creating a lens flare effect across the image.

Biodiversity and Healthy Ecosystems

Sheltering -in- (a magical)Place



Redwood Forest



Desert



Oak and Pine



Grassland and Oak Savanna



Coast



California is a Biodiversity Hotspot!



- Mediterranean climate and dramatic geography
- One of the most biodiverse places in the world
- Microclimates of the Bay Area make it a special place within a special place!

(Shelter in your Shed!)

California Native Plants



Native plants are naturally occurring within a specific region and have co-evolved with the other components of their ecosystem

In California we have:

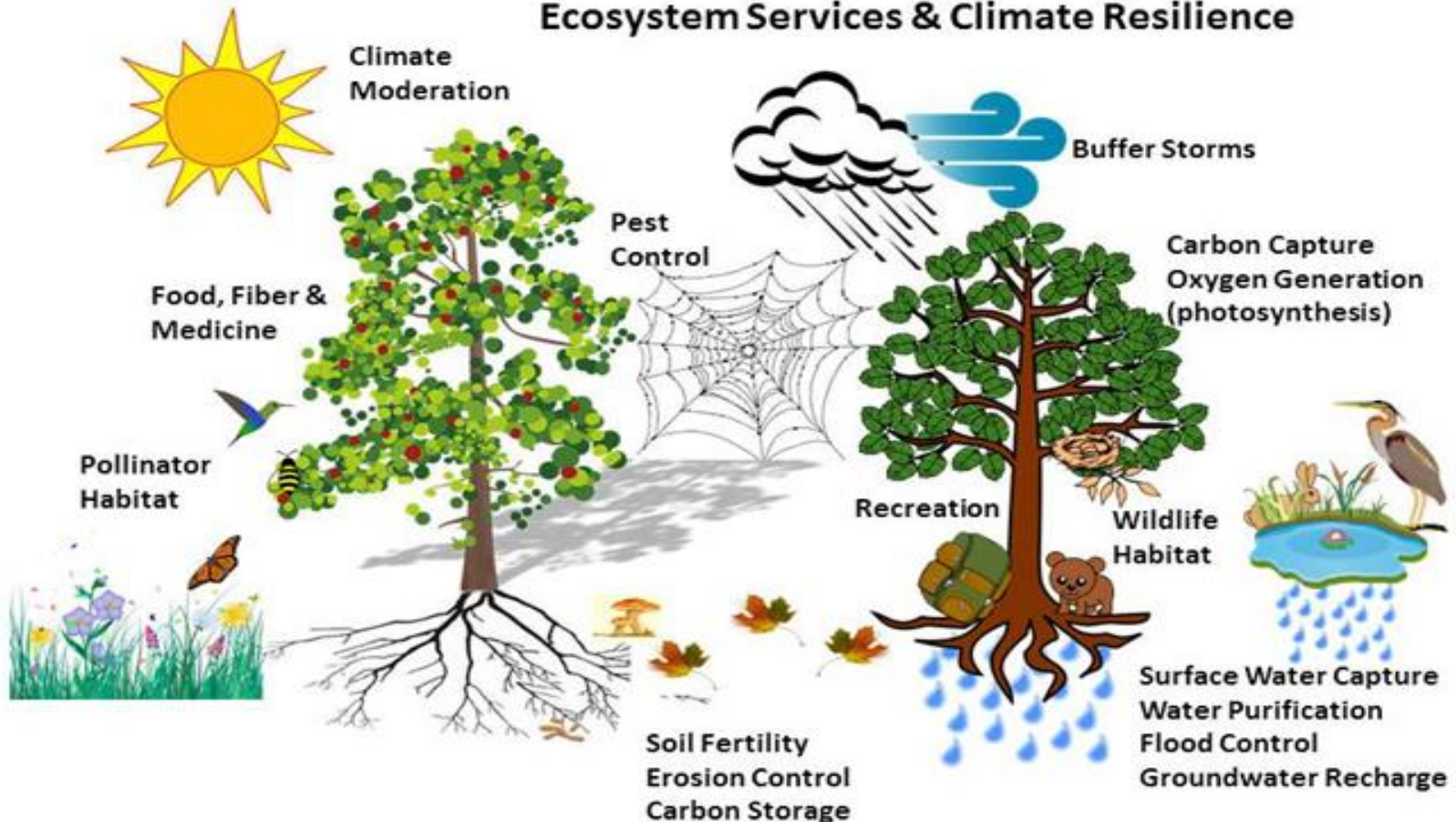
6,000+ native plant species

1,200+ endemic plant species



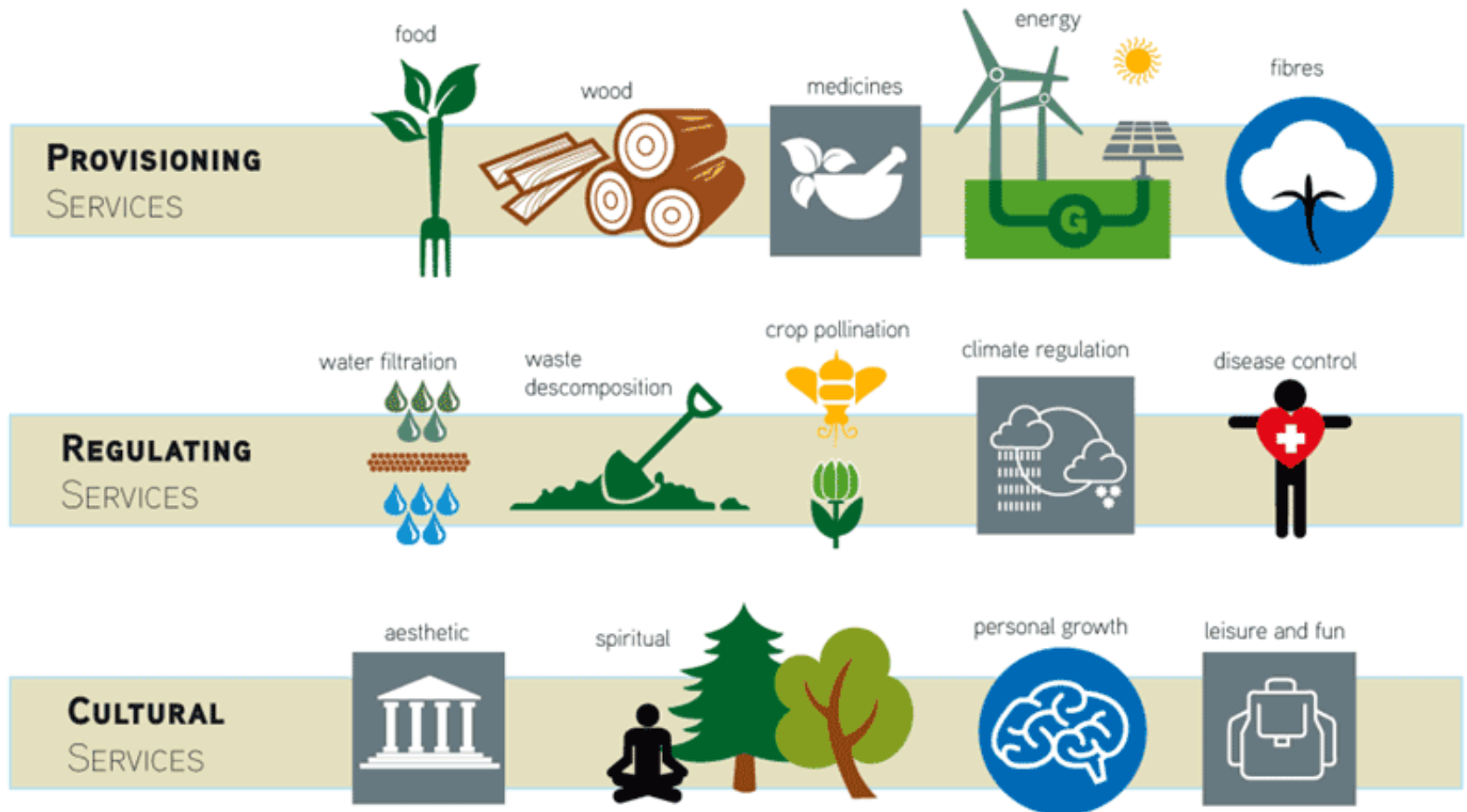
A Healthy Ecosystem has Biodiversity

Native Plant Communities Ecosystem Services & Climate Resilience



Ecosystem Services

WHAT DO WE GET FROM **ECOSYSTEMS**?



Impacts on Ecosystems



- Urbanization
- Agriculture
- Climate Change
- Invasive Species

Introduced Species



Non-native plants are plants that have been introduced with human help (intentionally or accidentally) to a new place or a new type of habitat where it was not previously found. Not all non-native plants are invasive.

Invasive plants are non-native plants that spread quickly and cause harm to the environment, economy, or human health.

Invasive Plant Species



- Reduce biodiversity and ecosystem health:
 - provide minimal to no food for local insects
 - displace native plants and create monocultures
 - reduce wildlife habitat
 - can change soil chemistry
 - can disproportionately deplete groundwater
- Can increase fire fuel load
- Degrade agriculture and range land
- Reduce recreational value

YOU CAN HELP!

