



# EDRR OF JAPANESE KNOTWEED IN MARIN COUNTY

JUNE 25, 2020

ANNA DIRKSE

JAPANESE KNOTWEED OUTREACH COORDINATOR

UNIVERSITY OF CALIFORNIA COOPERATIVE EXTENSION





# THE MANY NAMES OF JAPANESE KNOTWEED...

## Scientific Names:

- *Fallopia japonica*
- *Polygonum cuspidatum*
- *Reynoutria japonica*

## Other Common Names:

- Mexican bamboo
- crimson beauty
- Japanese fleece flower
- Reynoutria fleece flower
- Kontiki bamboo





## AND ITS MANY FACES

- Spring: Looks like red or pink “asparagus”
- Summer/Fall: Red speckled stems with nodes, shield shaped leaves with a flat base, zig-zag stems and white flowers; 2 to 3 meters tall
- Winter: Brown stems that are hollow and still standing until spring





## Key ID Features

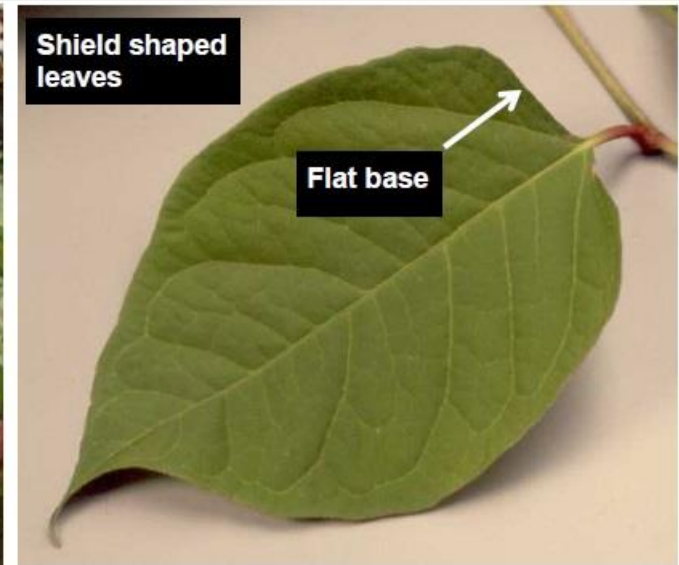


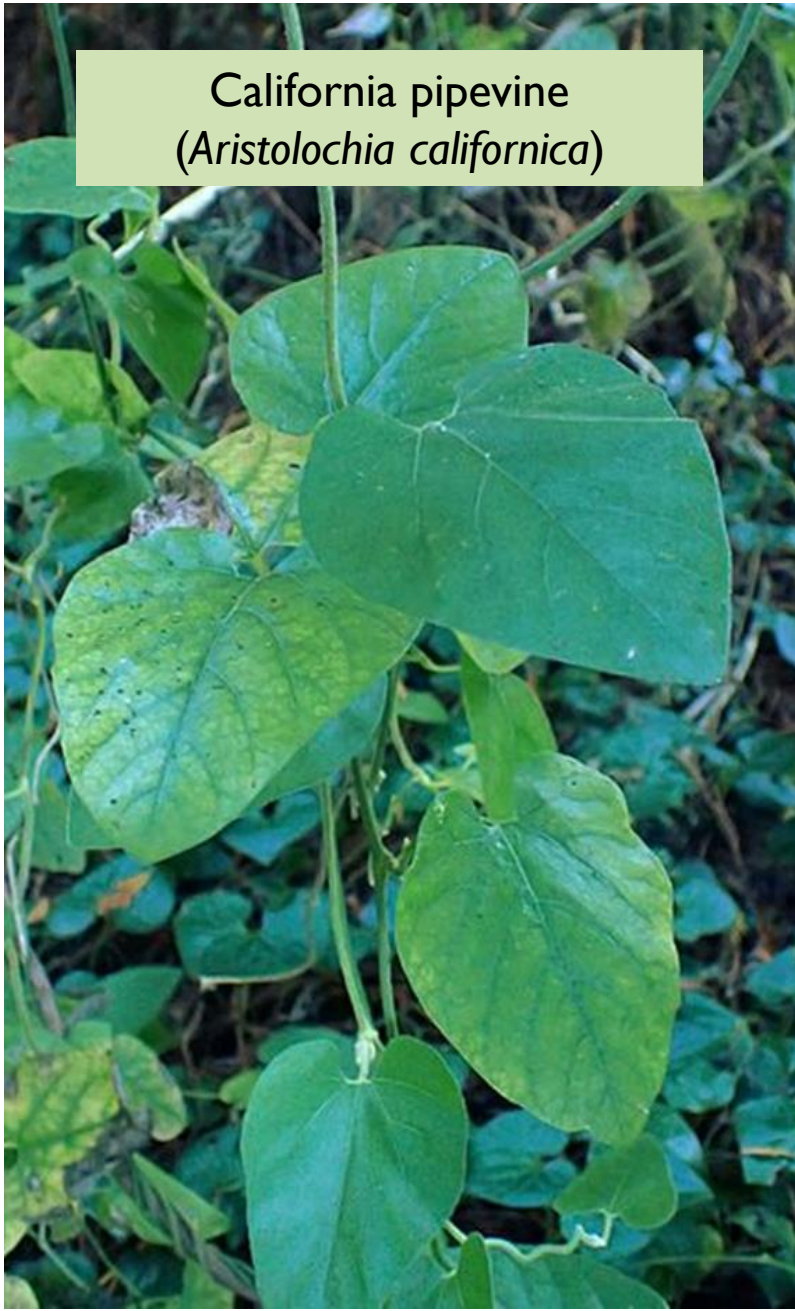
Image Credit: Phlorum Limited






Photo credit: Invasive Species Ireland




A close-up photograph of the California pipevine (Aristolochia californica). The plant features large, heart-shaped (cordate) leaves with prominent veins and slightly wavy margins. A thin, light-colored vine is visible winding through the foliage.

California pipevine  
(*Aristolochia californica*)

A photograph of a Smartweed (Persicaria sp.) plant. It shows several upright, thin stems with opposite, lanceolate leaves. Small, pale flowers are visible at the tips of the stems. The background is slightly blurred, showing some dry sticks and foliage.

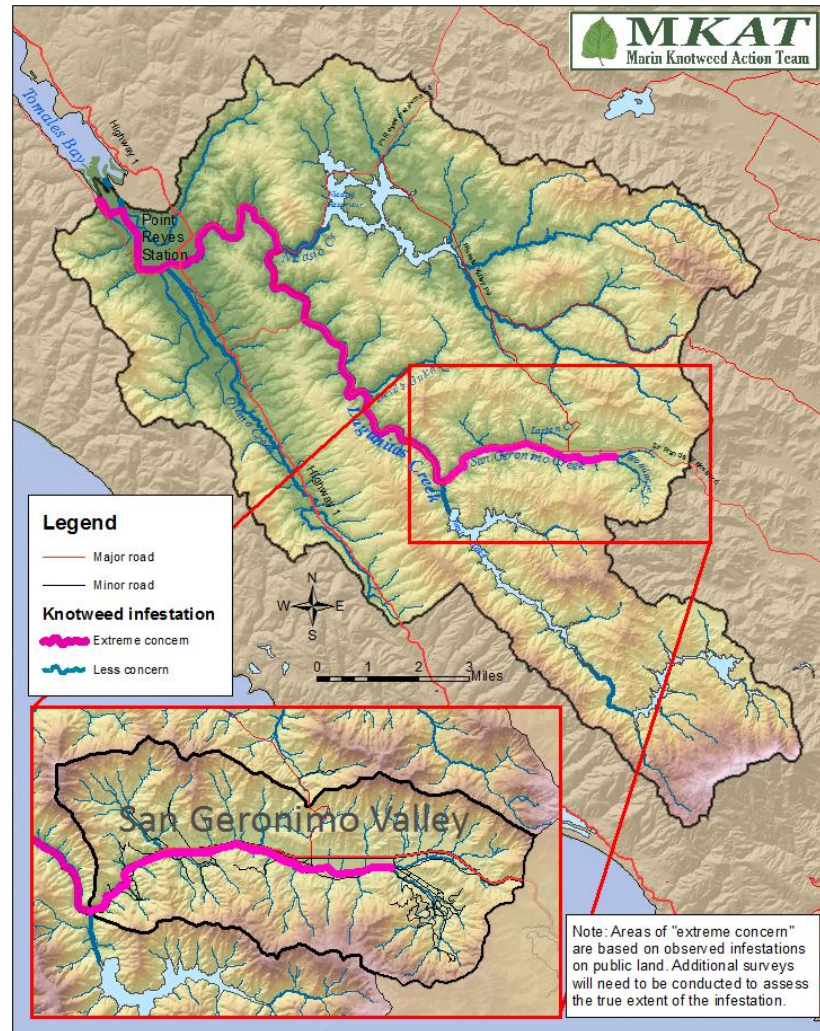
Smartweed  
(*Persicaria* sp.)

A photograph of California Spikenard/Elk clover (Aralia californica). The image shows large, deeply palmately lobed leaves with serrated margins. A human hand is placed next to the leaves to provide a sense of scale, showing they are quite large.

California Spikenard/Elk clover  
(*Aralia californica*)

Photos by Krzysztof Ziarnik and Andrea Williams





Likely Japanese knotweed infestation areas in the Lagunitas Creek watershed.

# WHERE HAS JAPANESE KNOTWEED BEEN IDENTIFIED IN MARIN COUNTY?

- Lagunitas Creek watershed
- San Geronimo Creek watershed





# WHY ERADICATION?

- Aggressive colonizer that prevents tree seedlings from establishing because of its allelopathic properties
- Early emergence and shoot height shades out other vegetation
- Root system doesn't hold soil in place, leading to soil erosion and increased sedimentation in streams
- Reduces the food supply for juvenile salmon in the spring
- Property damage; destroys roads, foundations and septic systems





# PUBLIC INFRASTRUCTURE DAMAGE



Photo Credits: Japanese Knotweed Ltd. and IVM and Treatment Ltd.





Photo Credit: Japanese Knotweed Solutions



# JAPANESE KNOTWEED IN JAPAN



*Aphalara itadori*



*Mycosphaerella* leaf spot



Photo Credits: N.Adachi et al., D. Kurose et al. and Japanese Knotweed Removal UK



# SIGHTINGS IN MARIN





# WHAT SHOULD I DO IF I HAVE FOUND KNOTWEED?

- If you think you have found Japanese knotweed, please do not attempt removal.
- Mechanical removal stimulates growth and risks spread!
- Take a picture of the plant and send it along to MKAT by emailing [acdirkse@ucanr.edu](mailto:acdirkse@ucanr.edu)
- Make sure to include contact info and location info
- Record an observation on Calflora (include a few photos!)



Resources are available at <https://ucanr.edu/sites/MarinKnotweedActionTeam>

Stay updated by “liking” our Facebook page, [Marin Knotweed Action Team](#)

