

Large Equipment Mowing and Whole Plant removal

Pam Beitz- East Bay Regional Parks

Tom Getts- UC Cooperative Extension



University of California
Agriculture and Natural Resources

Outline

- Mowing
 - Types of mowers
 - How too use/effectiveness
 - Caveats/Cautions
- Large Plant removal
 - Types of equipment
 - How too use/effectiveness
 - Caveats/Cautions

Qualified Operators

- Impacts
 - High disturbance potential
 - Compaction
 - Erosion
 - Off target impacts

Mowing with Large Equipment

- Types of mowers
 - Rotary (brush hog)

Mowing with Large Equipment

- Types of mowers
 - Rotary (brush hog)



Photo Courtesy of: <https://dickeybub.net/dickey-bub-store-locations>

Mowing with Large Equipment

- Types of mowers
 - Rotary (brush hog)



Photo Courtesy of: <https://www.tractorbynet.com>

Mowing with Large Equipment

- Types of mowers
 - Rotary (brush hog)
 - Flail mower



Photo Courtesy of <https://www.woodmaxx.com>

Mowing with Large Equipment

- Types of mowers
 - Rotary (brush hog)
 - Flail mower



Photo Courtesy of: <https://www.tractorbynet.com>

Mowing with Large Equipment

- Types of mowers
 - Rotary (brush hog)
 - Flail mower



Mowing with Large Equipment

- Types of mowers
 - Rotary (brush hog)
 - Flail mower



Photo Courtesy of: <https://localgardener.org/blog/tempest>

Mowing with Large Equipment

- Types of mowers
 - Rotary (brush hog)
 - Flail mower
- Side Slope Mowers
 - Rotary
 - Flail



Mowing with Large Equipment

- Types of mowers
 - Rotary (brush hog)
 - Flail mower
- Side Slope Mowers
 - Rotary
 - Flail



Photo Courtesy of: <https://www.mutilhog.com>

Mowing with Large Equipment

- Types of mowers
 - Rotary (brush hog)
 - Flail mower
- Side Slope Mowers
 - Rotary
 - Flail
- Remote
 - Rotary



Photo Courtesy of: <https://www.lawnsite.com>

Mowing with Large Equipment

- Types of mowers
 - Rotary (brush hog)
 - Flail mower
- Side Slope Mowers
 - Rotary
 - Flail
- Remote
 - Rotary
 - Flail

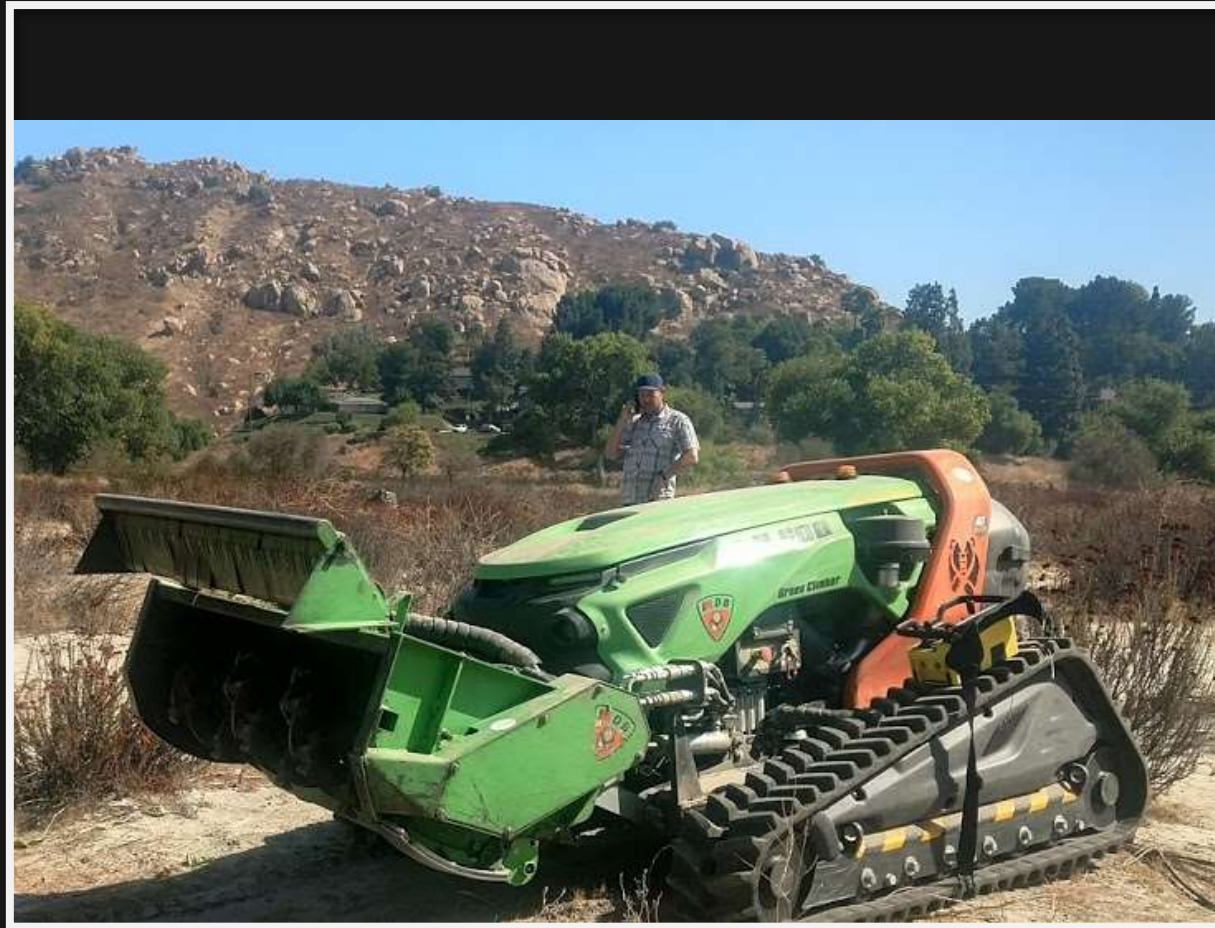


Photo Courtesy of: Jutta Burger

Effectiveness

- Most effective on
 - Annual species
 - Non-sprouting species
- Semi Effective on
 - Woody species
- Not effective (multiple cuts)
 - Sprouting species
 - Rhizomatous perennials
- Flat/low slope
- Non rocky
- Semi even terrain
 - Risk damaging equipment.

How To Use

- Timing
 - Bud Stage/flower stage
 - One pass vs. Multi pass
 - Multiple times/season for best suppression
- Moisture
 - Wet sites vs Dry Sites
- Preparation Other Treatments
 - Tarping
 - Grubbing
 - Herbicide
 - Competitive planting

Cautions/Caveats

- Advantages
 - Quick
 - Larger acreage
- Disadvantages
 - Non selective
 - Habitat disruption
 - Impact Desirable vegetation (do not mow sensitive sites/species)
 - Fire risk!!
 - Spark generation!
 - Need adequate moisture
 - Winter/spring
 - Early in morning
 - Take precaution (water truck, management plan)

Large Whole Plant Removal





Questions?

