

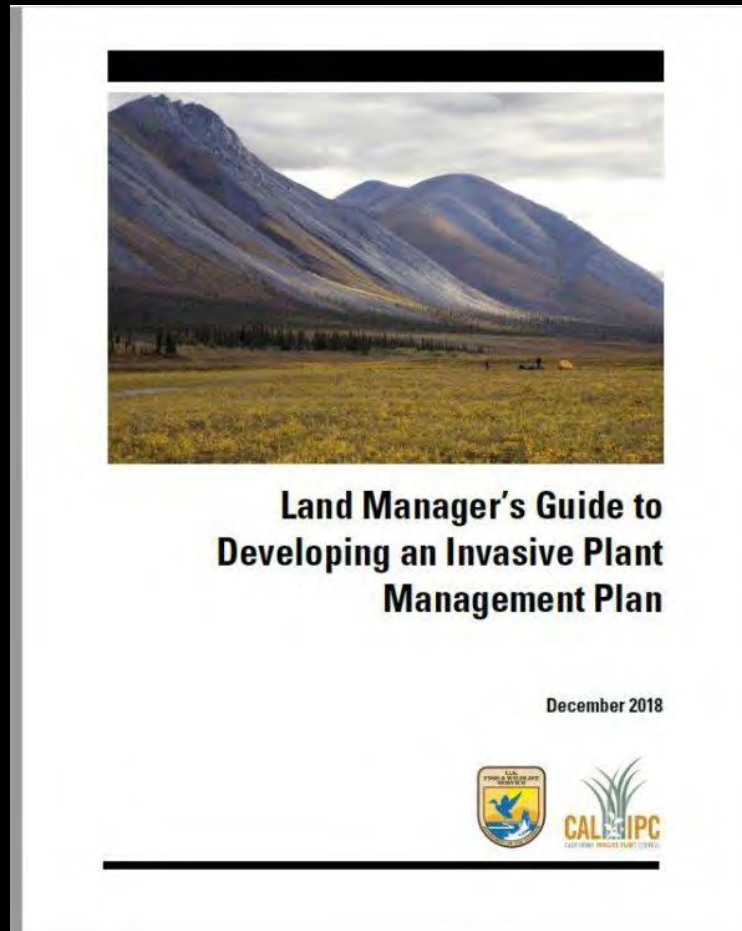
# Successful Proposals, Successful Projects



Steve Schoenig  
Cal-IPC

# Plan to Succeed

- 



**Workshop this Afternoon**

# Plan to Succeed

- Preparing to Write a Plan

  - Purpose and Spatial Scope

  - Identifying Project Teams

  - Review of site-specific information

  - Review of regulatory compliance issues

  - Analyzing and Designing a Management Strategy

  - Identifying species and areas

  - Evaluating status of species and areas

- Developing objectives and strategies

  - Avoiding unintended impacts

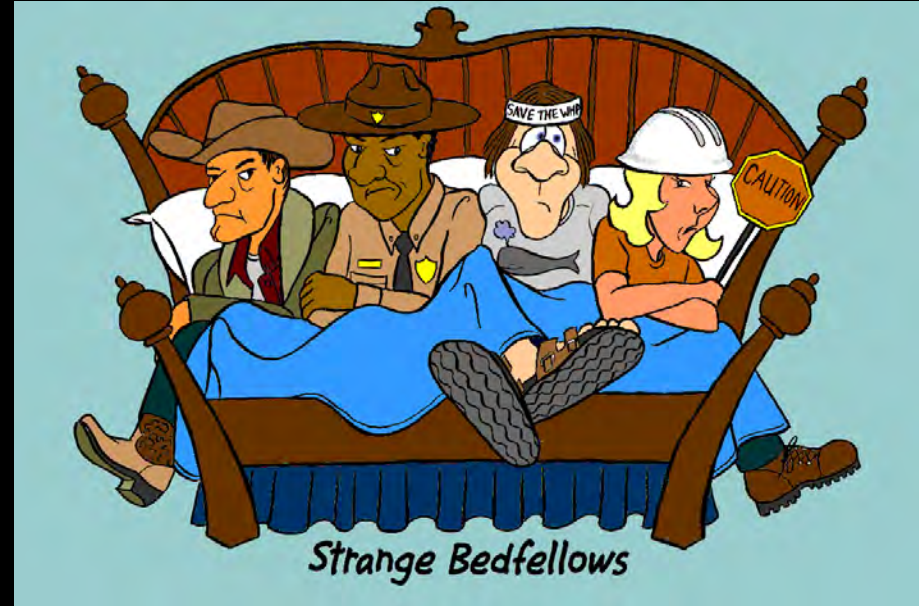
  - Planning work

  - Monitoring and Reporting

# WORK WITH PARTNERS

## WEED MANAGEMENT AREAS

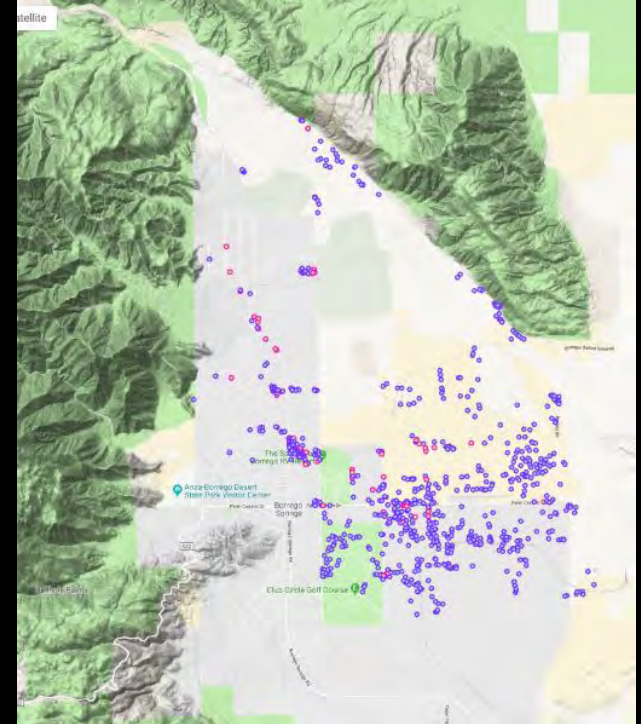
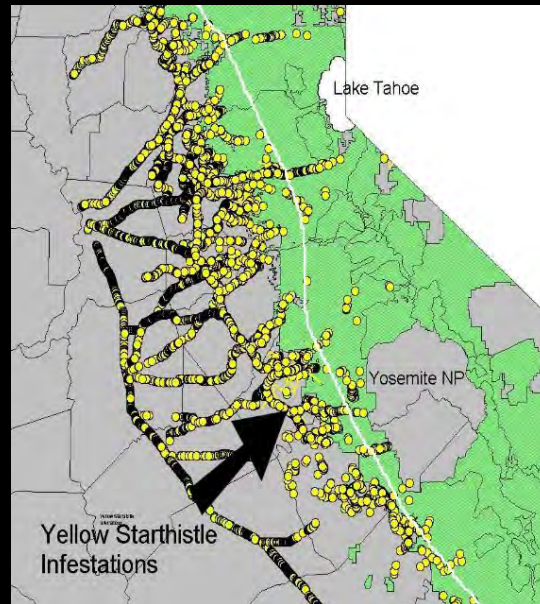
- County Ag Department
- State Agencies- CDFA, Parks, Fish & Game, Forestry & Fire, Etc.
- Federal Agencies- BLM, Forest Service, NRCS, NPS
- Growers, Cattlemen, RCDs, Forest Industry, Landowners
- UC Cooperative Extension
- Cities
- Military Landowners



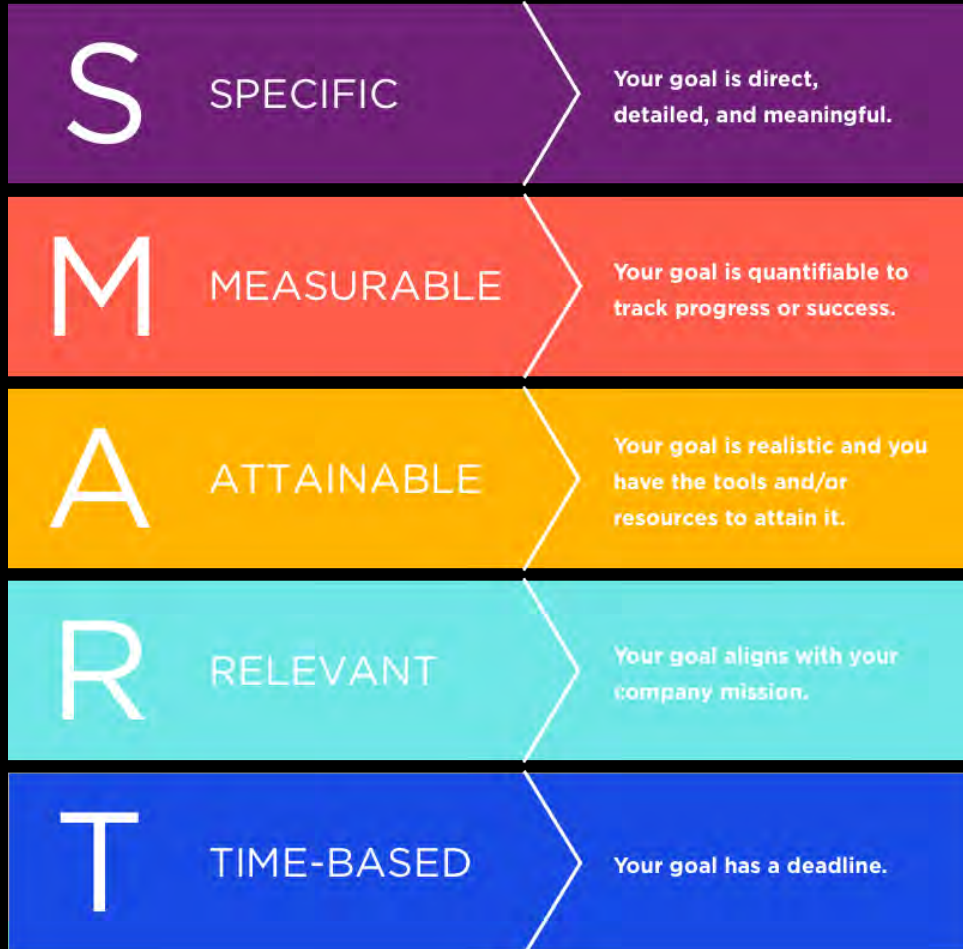
- Departments of Transportation
- CNPS, Nurserymen
- Railroads, Utilities
- Volunteers, Pest Control Ops
- Open Space, Parks, Water Districts



# Map Your Weeds & Make Good Maps for Proposals



# Frame your Project as a S.M.A.R.T. Goal

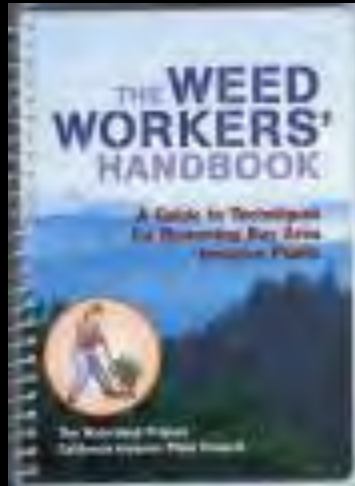


- **Kill Arundo and bindweed if we see it.**
- **Spray weeds for 100 hours**
- **Prevent all plants in both county pioneer populations of silver nightshade from producing seeds 2019-2022**
- **Reduce the density of starthisle to 15% cover by 2023 south of HWY 52**

# Pick the Best Control Methods

- **Cost**
- **Skill requirements**
- **Effectiveness**
- **Permits**
- **Impacts**
- **Safety**
- **Community Acceptance**

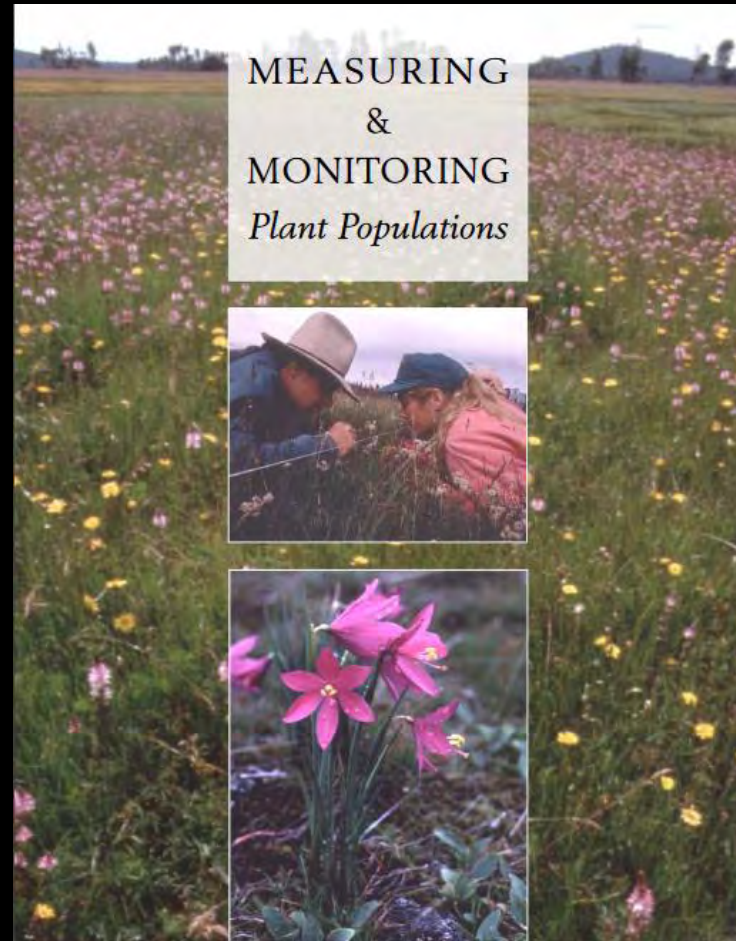
# Pick the Best Control Methods





# Document Success

- In most invasive weed control project a simple, but valid monitoring methodology can be developed.
- Pictures are invaluable in communicating the project, but are usually not something rely on solely.



# Successful Eradications from California

- 1) Whitestem distaff thistle – *Carthamnus leucocaulos*.
- 2) Dudaim melon – *Cucumis melo var. dudaim*
- 3) Giant dodder – *Cuscuta reflexa*
- 4) Serrate spurge – *Euphorbia serrata*
- 5) Russian salttree – *Halimodendron halodendron*
- 6) Blueweed – *Helianthus ciliaris*
- 7) Tanglehead – *Heteropogon contortus*
- 8) Creeping mesquite – *Prosopis strombulifera*
- 9) Meadowsage – *Salvia virgata*
- 10) Heartleaf nightshade – *Solanum cardiophyllum*
- 11) Austrian peaweed – *Sphaerophysa salsula*
- 12) Wild marigold – *Tagetes minuta*
- 13) Syrian beancaper – *Zygophyllum fabago*
- 14) Perennial sowthistle - *Sonchus arvensis*

# Success of Weed Management Areas

## From WMA 5-year Program Report 2006

- Apparent “eradication” of 2,015 populations of high priority weed infestations.
- Effective treatment of more than 128,421 acres of high priority weed infestations.
- Distribution of \$5.6 million to 48 WMAs covering 58 counties (AB1168 & SB1740).
- Leveraging a 3-to-1 match from outside grant funding and in-kind donations and services.
- Development of new local partnerships between public agencies, private landowners, agriculturalists and conservationists, with outreach programs reaching 88,803 people.
- Attendance by 6,781 people at regular weed management



**I WISH YOU ALL SUCCESS!**

