

# Partnering with the California Conservation Corps on Large Scale Weed Removal in the Oroville Wildlife Area



Holly Ferrara  
River Partners







# Today's Talk

- ▶ River Partners-Who are we?
- ▶ Oroville Wildlife Area Project Background
- ▶ Weed Removal Project
- ▶ Weed Removal Results
- ▶ Next Steps
- ▶ Lessons Learned



# River Partners

“To Create Wildlife Habitat for the Benefit of People and the Environment”

- Founded in Chico in 1998 by Two Conservation-minded Farmers
- 501(c)(3) Non-Profit Organization
- Focus on Large-Scale Implementation of Riparian Habitat Restoration (100+ acres)
- Combine Scientific Habitat Planning with Agricultural Practices
- Four Offices across California – Chico, Turlock, San Diego, Sacramento
- Work in 15 watersheds – including Sacramento River (Redding), Lower Tijuana River (US-Mexico Border), Lower Carson River (Nevada), Colorado River (Arizona), and a whole bunch in between.
- Restored over 12,000 acres to date
- Planted 2.5 million native trees, shrubs, vines, grasses, and forbs
- Funneled \$125 million towards conservation



River Partners pioneered the use of agricultural techniques combined with ecological science to re-introduce critical habitat in California on a scale not undertaken by any other organization.

Our practices establish self-sustaining forests from seeds in just three years.





# Partnership with California Conservation Corps





# Oroville Wildlife Area

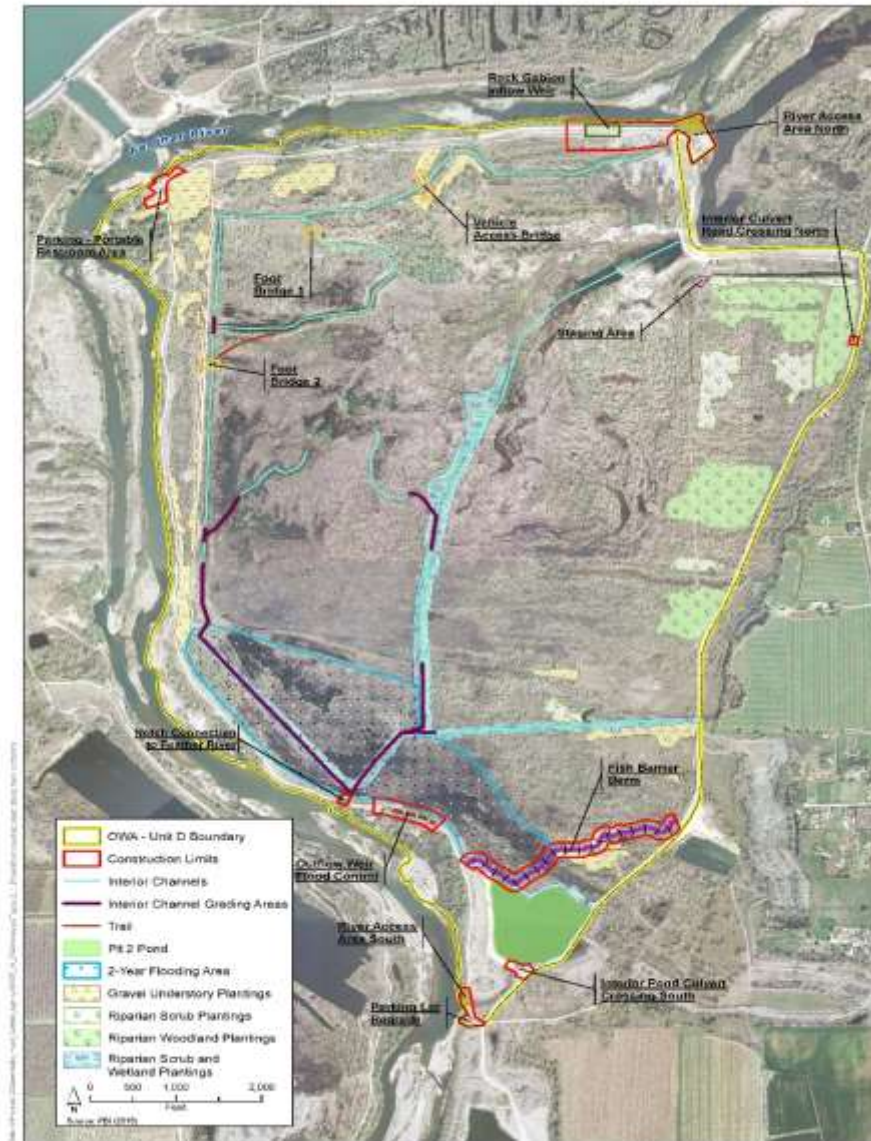
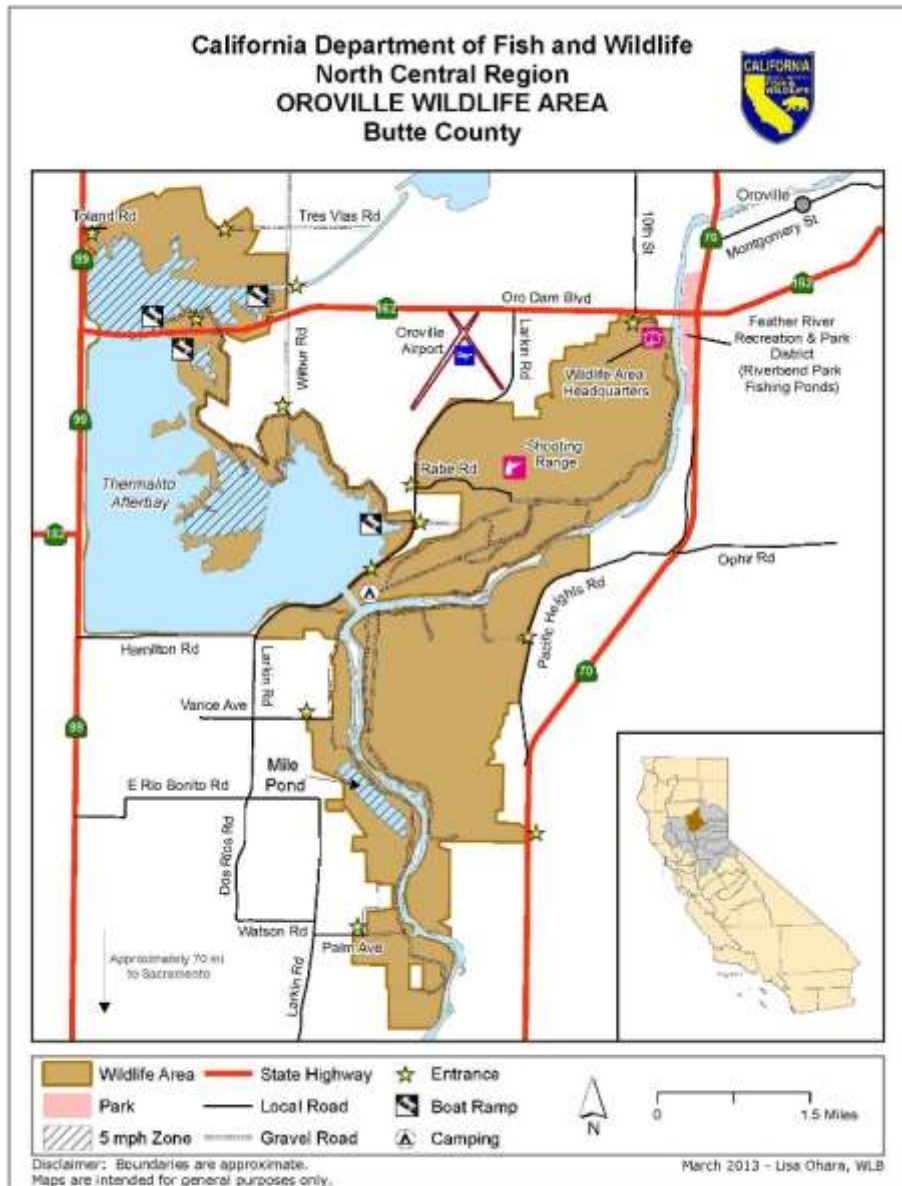


Figure 2-1  
Project Overview

# Target Invasive Plant Species

Six Species were chosen with collaboration from California Department Fish and Wildlife, Weed Management Plan, and the Cal-IPC Weed Workers Handbook

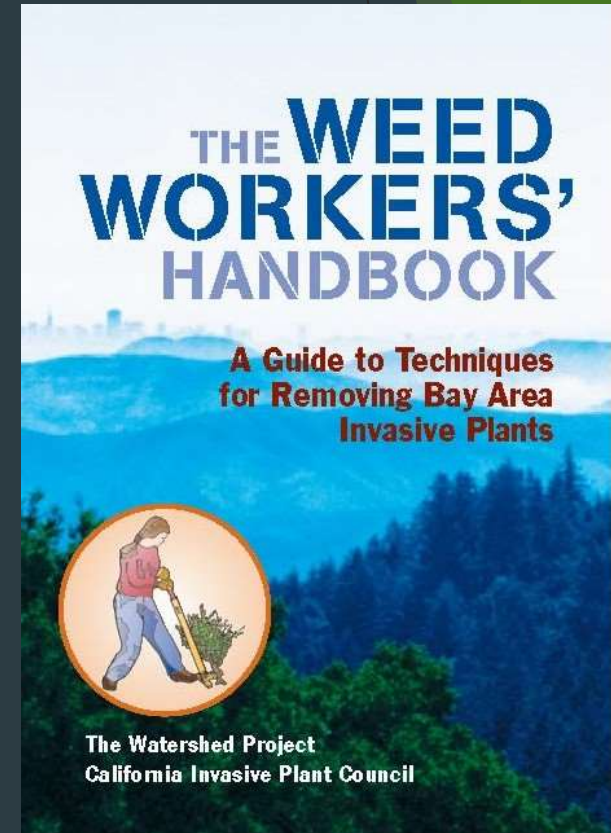
Concentrate on weed species that, if left alone, would soon be uncontrollable and disruptive to the most highly valued areas of the site.

Focus on species that alter ecosystem processes such as fire frequency, sedimentation, nutrient cycling and other processes.

Emphasize areas of high disturbance where mechanisms are in place to help disperse seeds of invasive species.

**The six species are:**

**Tree of Heaven, Scarlet Wisteria, Purple Loosestrife, Giant Reed, Broom Species, and Water Primrose**





# Tree of Heaven

*Ailanthus altissima*





# Scarlet Wisteria

*Sesbania punicea*





# Purple Loosestrife

*Lythrum salicaria*





# Giant Reed

*Arundo donax*





# Broom Species

*Cytisus*





# Water Primrose

*Ludwigia peploides*



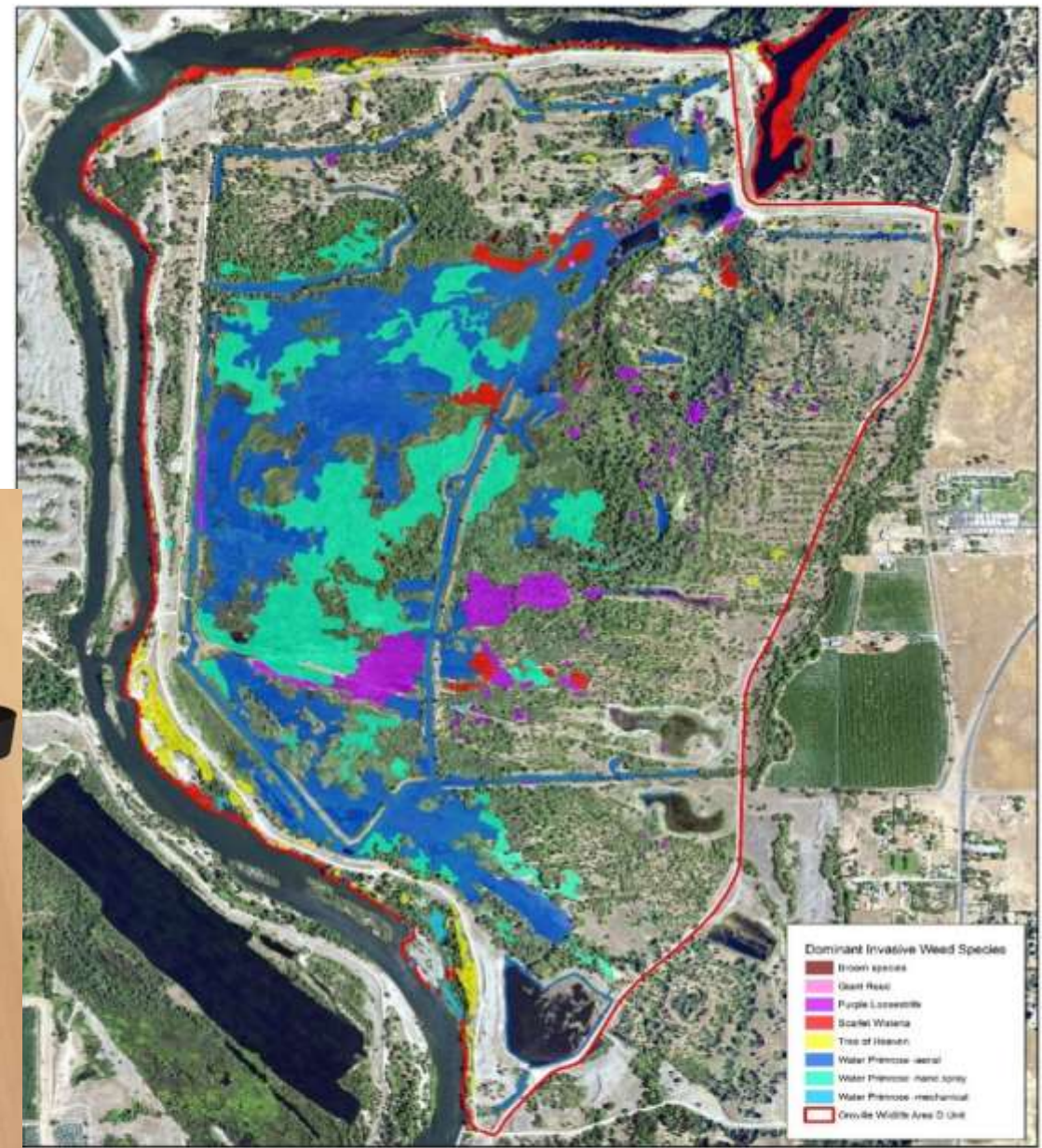


iPad

# Survey Materials

Bad Elf

Arc Collector Pro(App)



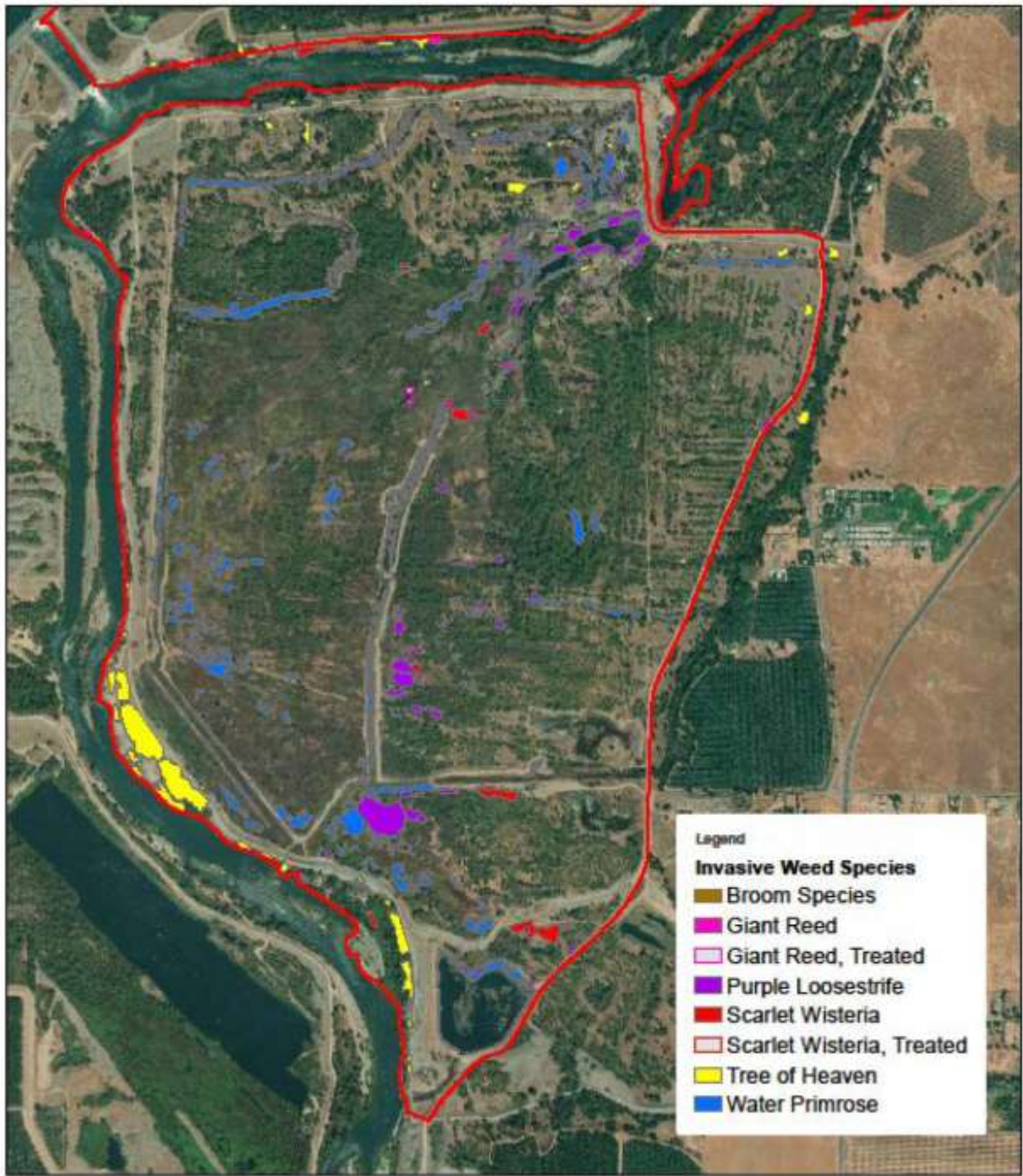


# Sharing the Information





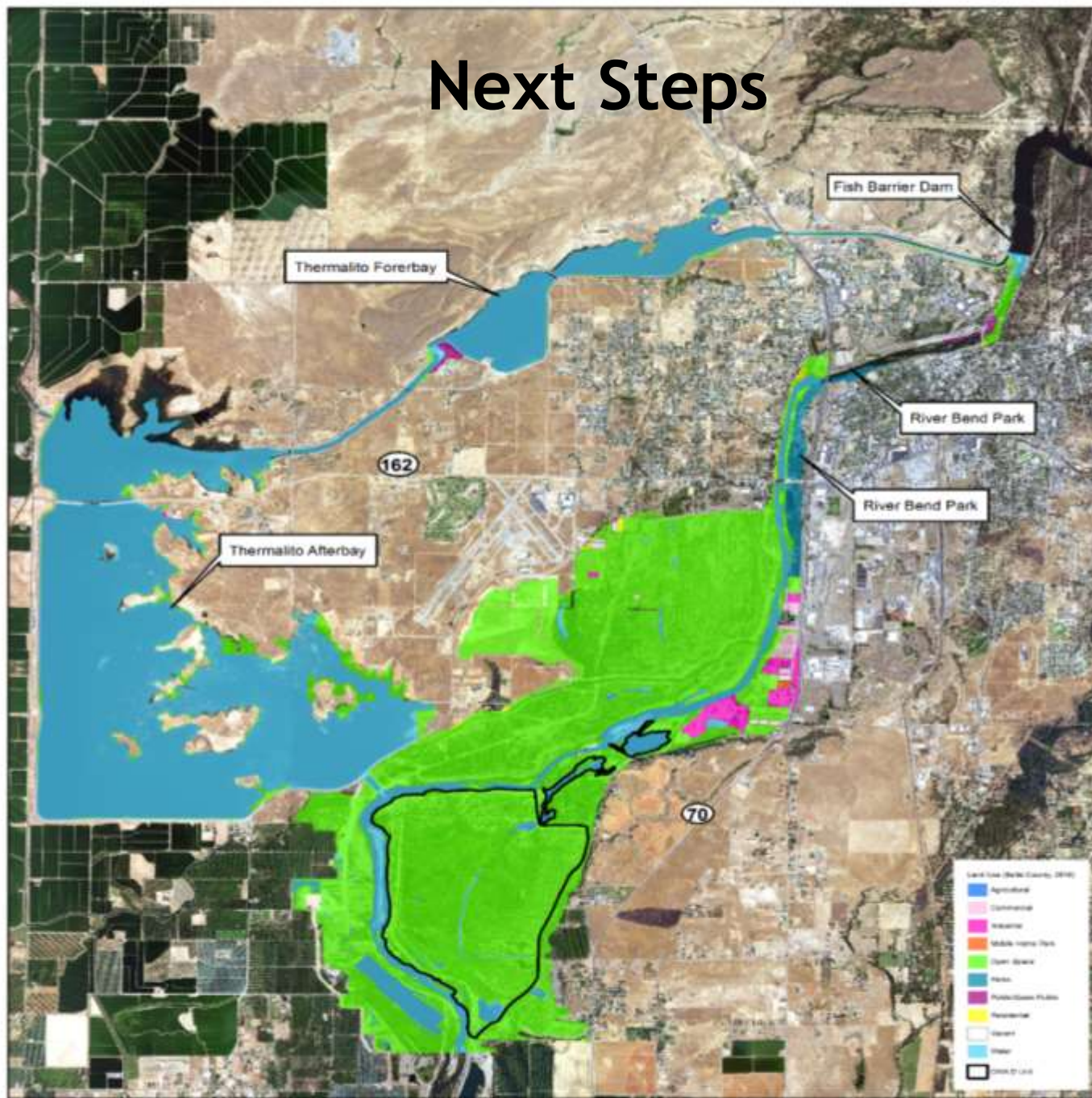
<b>Domi</b>
Broor
Giant
Purpl
Scarl
Tree
Water
Water
Water
<b>Total</b>



<b>ted/New</b>
4.46
1.64
120
<b>25.30</b>



# Next Steps



Land Use within the 100-yr Floodplain



# Lessons Learned

First and Foremost-The CCC's are AWESOME!!

Things to consider:

- Scheduling Challenges
- Secure flexible funding



THANK YOU





# CONSERVATION PARTNERS



Girl Scouts  
Glenn County



District



Banta  
Big S  
Bradi

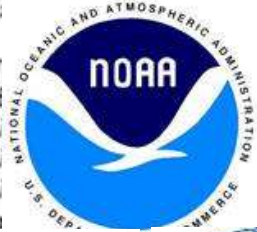


Management

Wildlife Refuge  
School District  
Delta Program

Traditional Ales and Lagers

Game  
resources



WCB  
State of California  
Wildlife Conservation Board

River National Wildlife  
River Preservation Trust



Central Valley  
Central Valley  
Chico Jun



Tuolumne River Trust

PUBLIC UTILITIES  
Water & Wastewater



American Rivers  
Rivers Connect Us®



City of Turlock



Vino Farms  
WILCOAST



Friends of the River  
Geographical Information Center, CSU-Chico



North State Resources, Inc.  
wintun Nation







Questions?