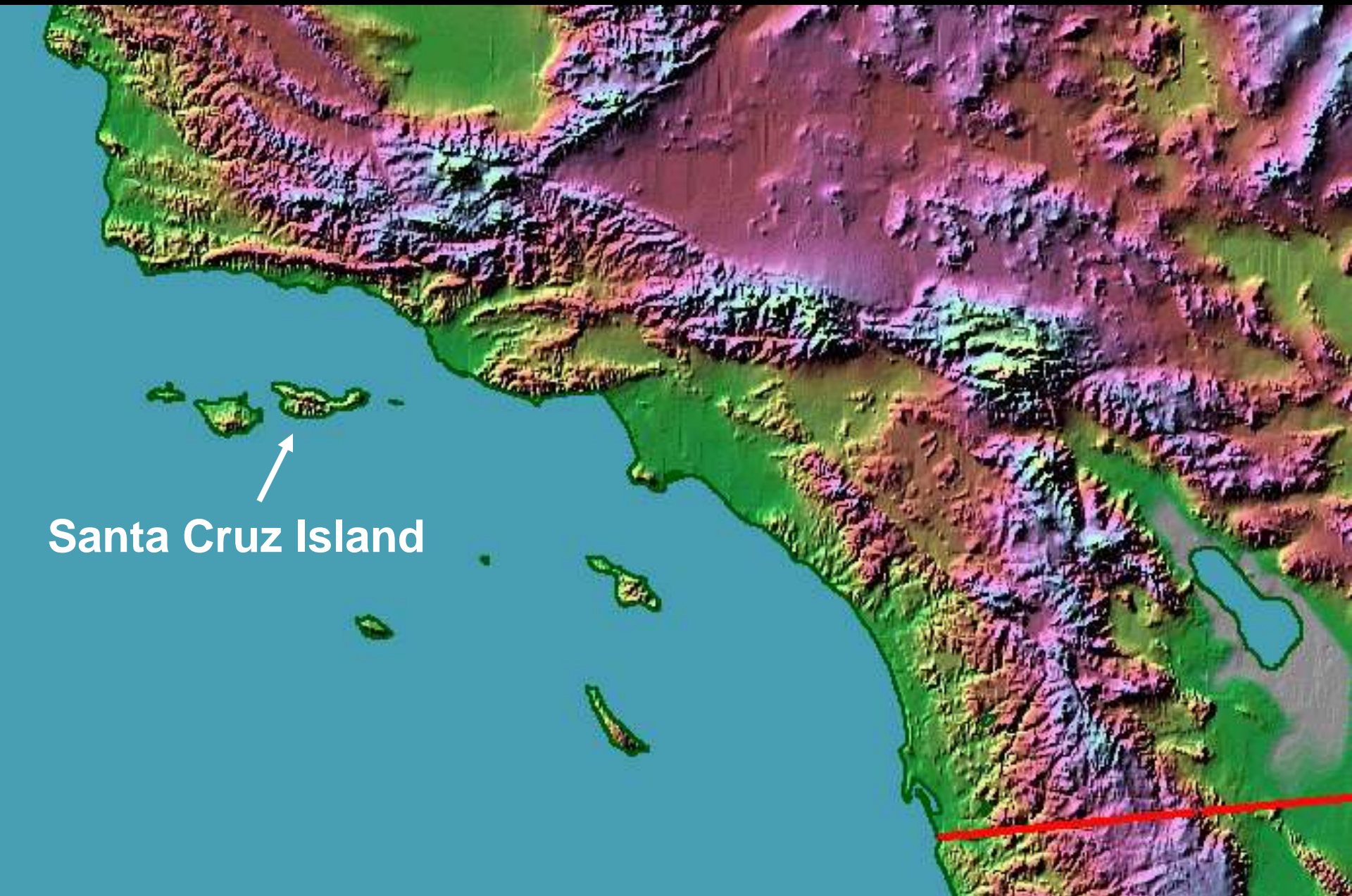


Weeds and Wildlife, Impacts and Interactions: Perspectives from Santa Cruz Island, CA

Scott Morrison
The Nature Conservancy



Santa Cruz Island





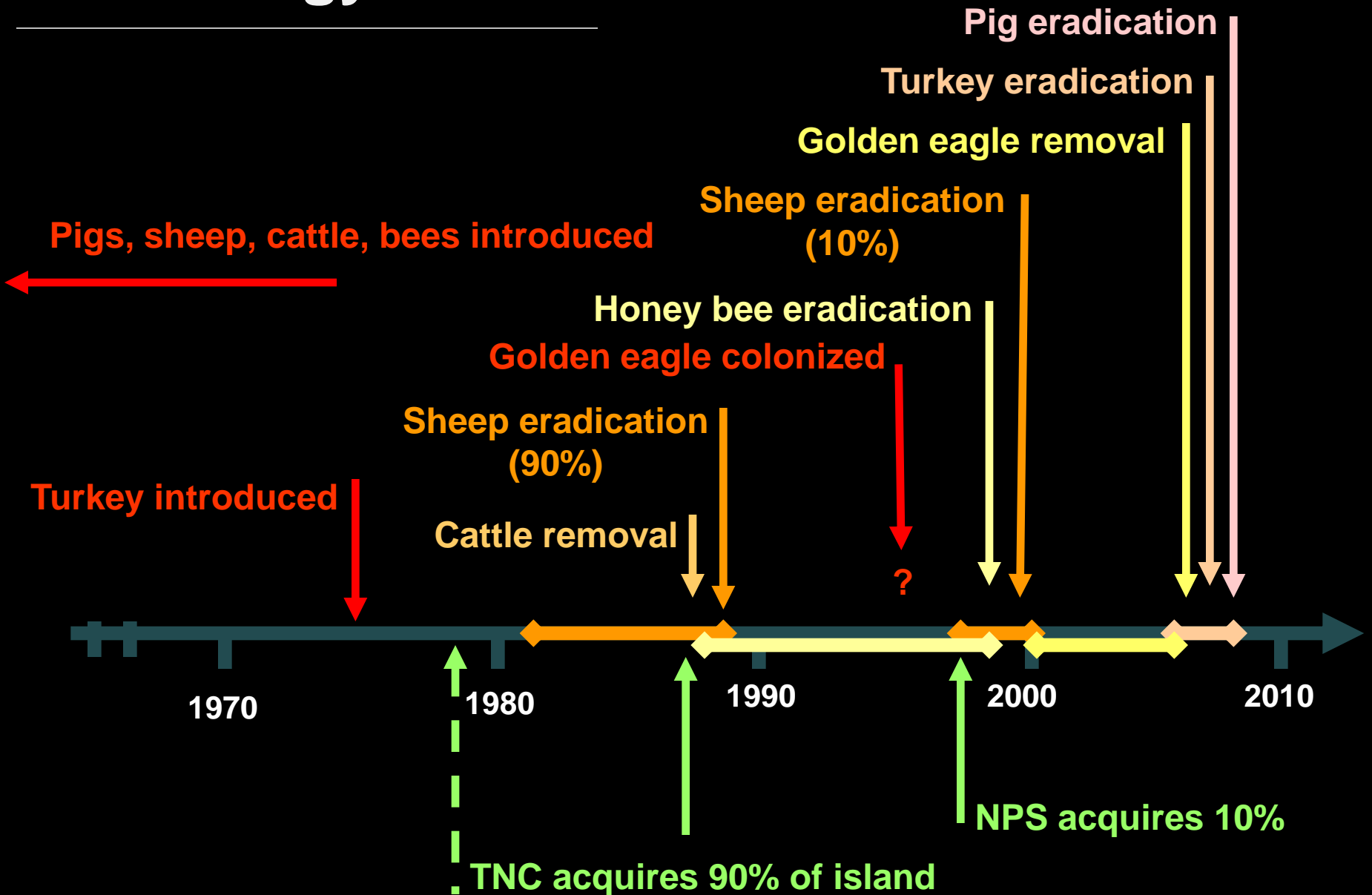
The Nature Conservancy

National Park Service

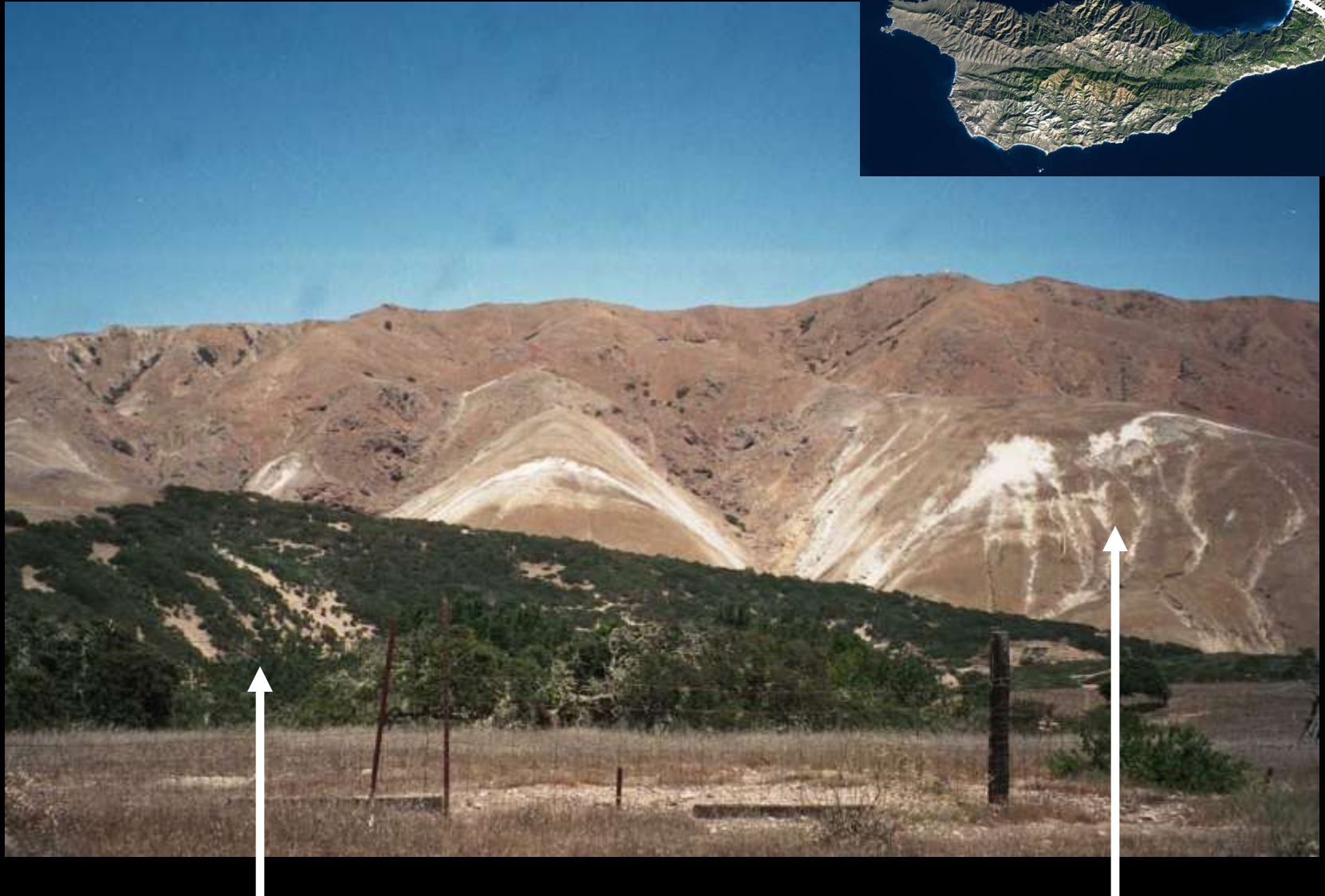




Chronology







TNC ...15 year lag in sheep removal... NPS

November 2000



1985

Grass	74%
Scrub	5%
Chaparral	14%
Forest	7%

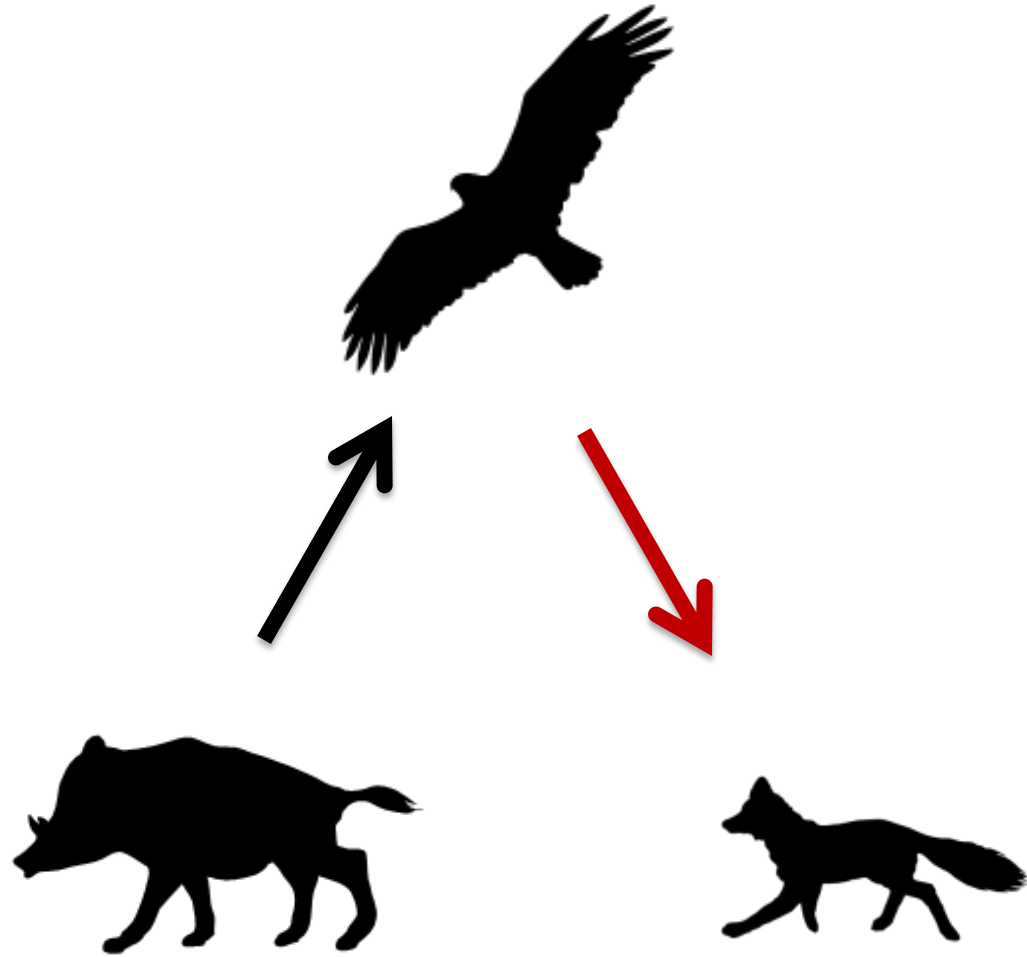


2005

Grass	24%
Scrub	43%
Chaparral	25%
Forest	8%











Management conundrum

Eradication of pigs thought to require removal of fennel

EIS: burning, herbicide

But, fennel fields provided safety for foxes

Foxes listed as endangered in 2004.

FWS: Should “fennel” be designated critical habitat?





SANTA BARBARA NEWS-PRESS



Wendy McCaw Chief Executive Officer
Joe Cole President & Publisher
Travis Armstrong Editorial Page Editor

Hyper Island
Publishing LLC

OUR OPINION



NEWS-PRESS FILE

Santa Cruz Island's Hall of Shame

Then
und
the
of
San
This specie
the island for
years, but su
National Pa
the Nature C
want to kill e
them.
Speculatio
multimillion
paign — with
ing much of

SANTA BARBARA



Rep. Lois Capps



Park Manager
Kate Faulkner



Park Superintendent
Russell Galipeau



Rep. Elton Gallegly



Rubinstein Law Group

A Professional Law Corporation
Yano L. Rubinstein, Esq., Cal. Bar No. 214277
Cindy J. Scribe Esq., Cal. Bar No. 209469
100 Pine Street, 20th Floor
San Francisco, CA 94111
Telephone: (415) 277-1900
Facsimile: (415) 277-1919

Attorneys for Plaintiffs

UNITED STATES COURT OF APPEALS
FOR THE NINTH DISTRICT

“The project includes the release of herbicides from helicopters ... showered over large areas of fennel ... NPS will also burn large areas of vegetation...the fires will kill foxes, which contracts the sole reason for the Project....”

*In Defense of Animals et al v. NPS et al.
US District Court 2005*



Santa Cruz Island

Zone 1 Ground Hunting

5-9-05 to 7-26-05



Santa Cruz Island
Zone 1 Ground Hunting
5-9-05 to 7-26-05

West End Flats
 Fraser
 Santa Cruz
 Black Point Canyon
 North Ridge
 Christy Beach
 Canada
 Christy
 Vallejo
 Canada de los Sauces
 Christy Plaza
 Lagoon



Santa Cruz Island

Zone 1 Ground Hunting

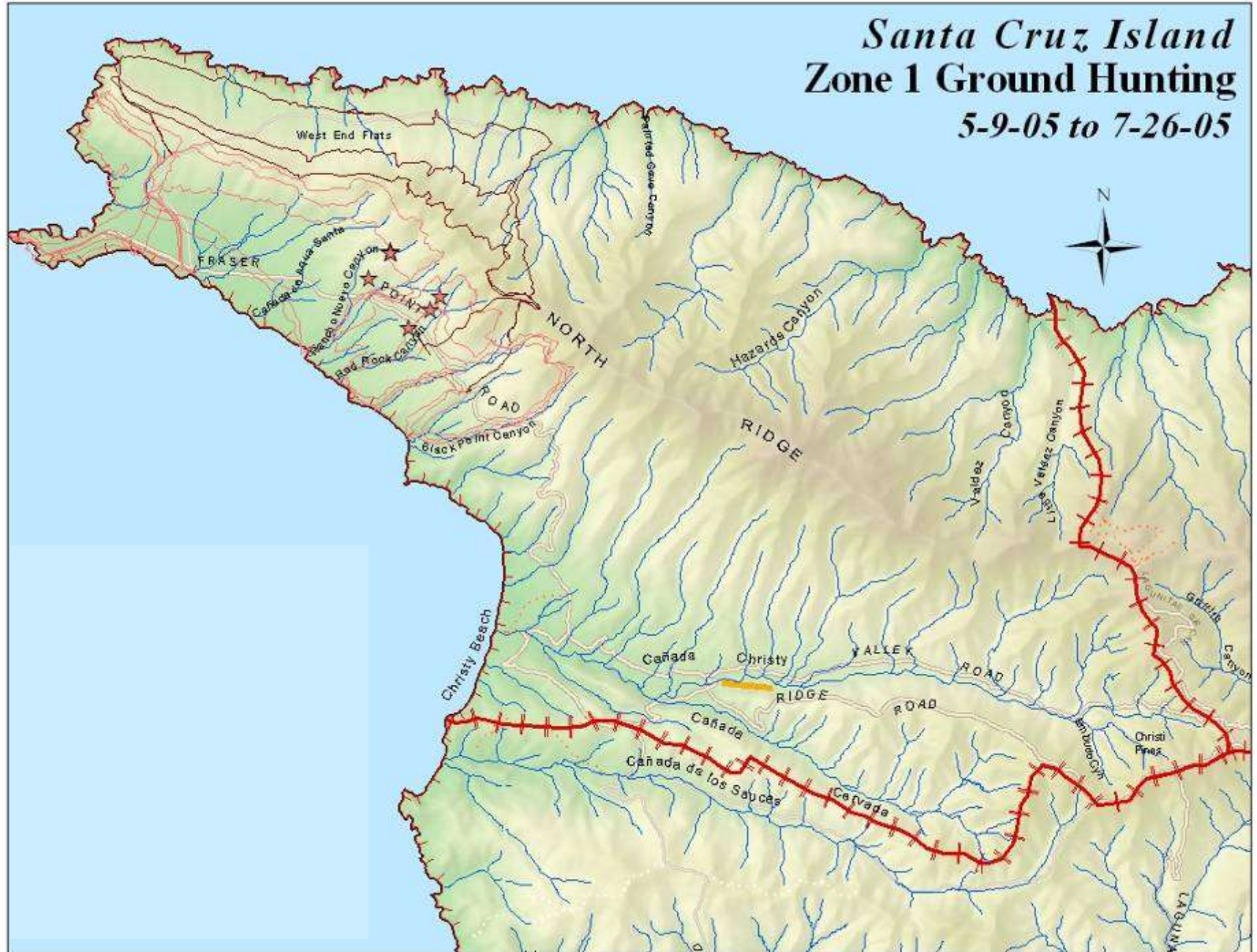
5-9-05 to 7-26-05



Santa Cruz Island

Zone 1 Ground Hunting

5-9-05 to 7-26-05



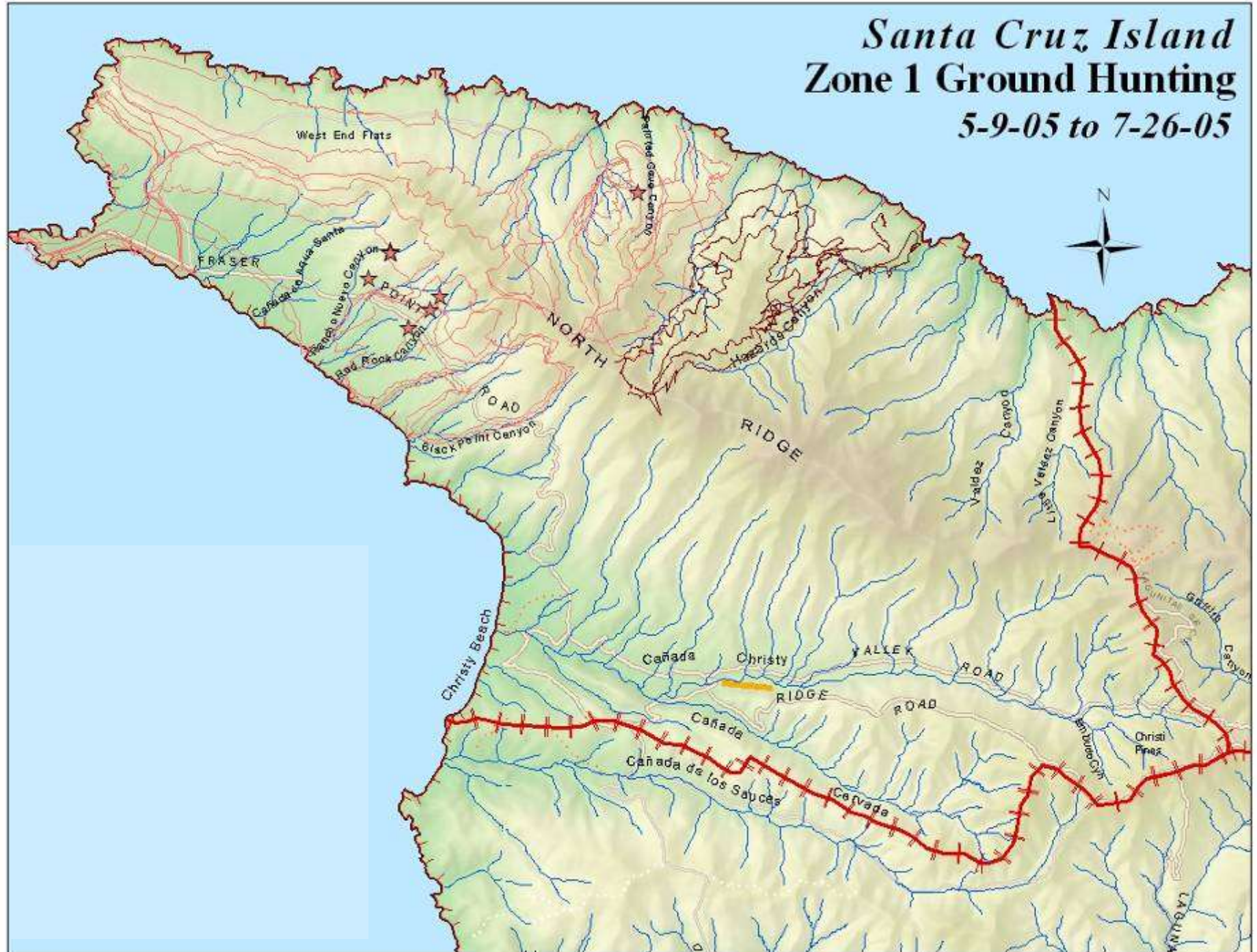
Santa Cruz Island **Zone 1 Ground Hunting** *5-9-05 to 7-26-05*



Santa Cruz Island

Zone 1 Ground Hunting

5-9-05 to 7-26-05



Santa Cruz Island **Zone 1 Ground Hunting** *5-9-05 to 7-26-05*



Santa Cruz Island

Zone 1 Ground Hunting

5-9-05 to 7-26-05



Santa Cruz Island **Zone 1 Ground Hunting** *5-9-05 to 7-26-05*



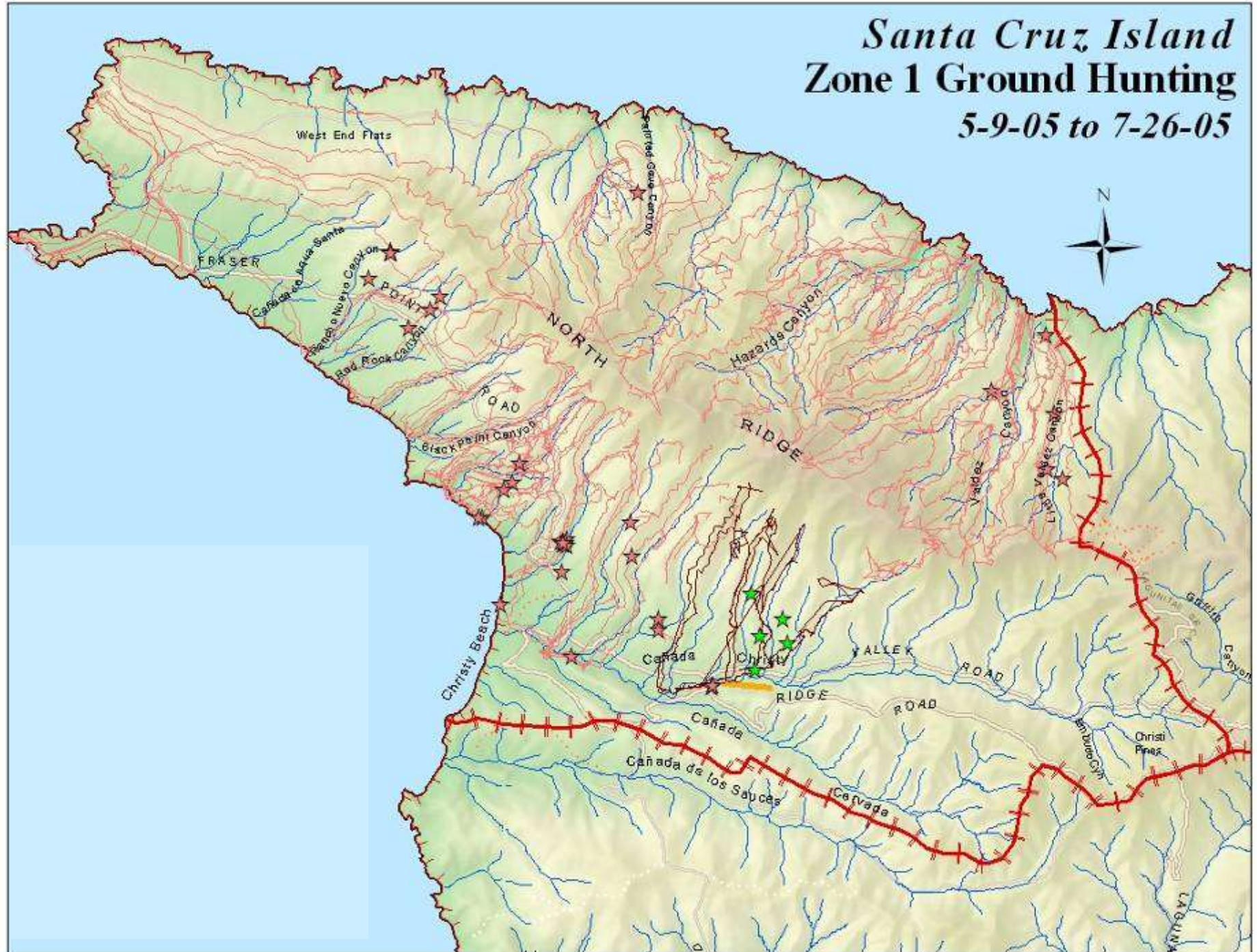
Santa Cruz Island **Zone 1 Ground Hunting** *5-9-05 to 7-26-05*



Santa Cruz Island **Zone 1 Ground Hunting** *5-9-05 to 7-26-05*



Santa Cruz Island **Zone 1 Ground Hunting** *5-9-05 to 7-26-05*



Santa Cruz Island **Zone 1 Ground Hunting** *5-9-05 to 7-26-05*



Santa Cruz Island **Zone 1 Ground Hunting** *5-9-05 to 7-26-05*



Santa Cruz Island **Zone 1 Ground Hunting** *5-9-05 to 7-26-05*



Santa Cruz Island **Zone 1 Ground Hunting** *5-9-05 to 7-26-05*



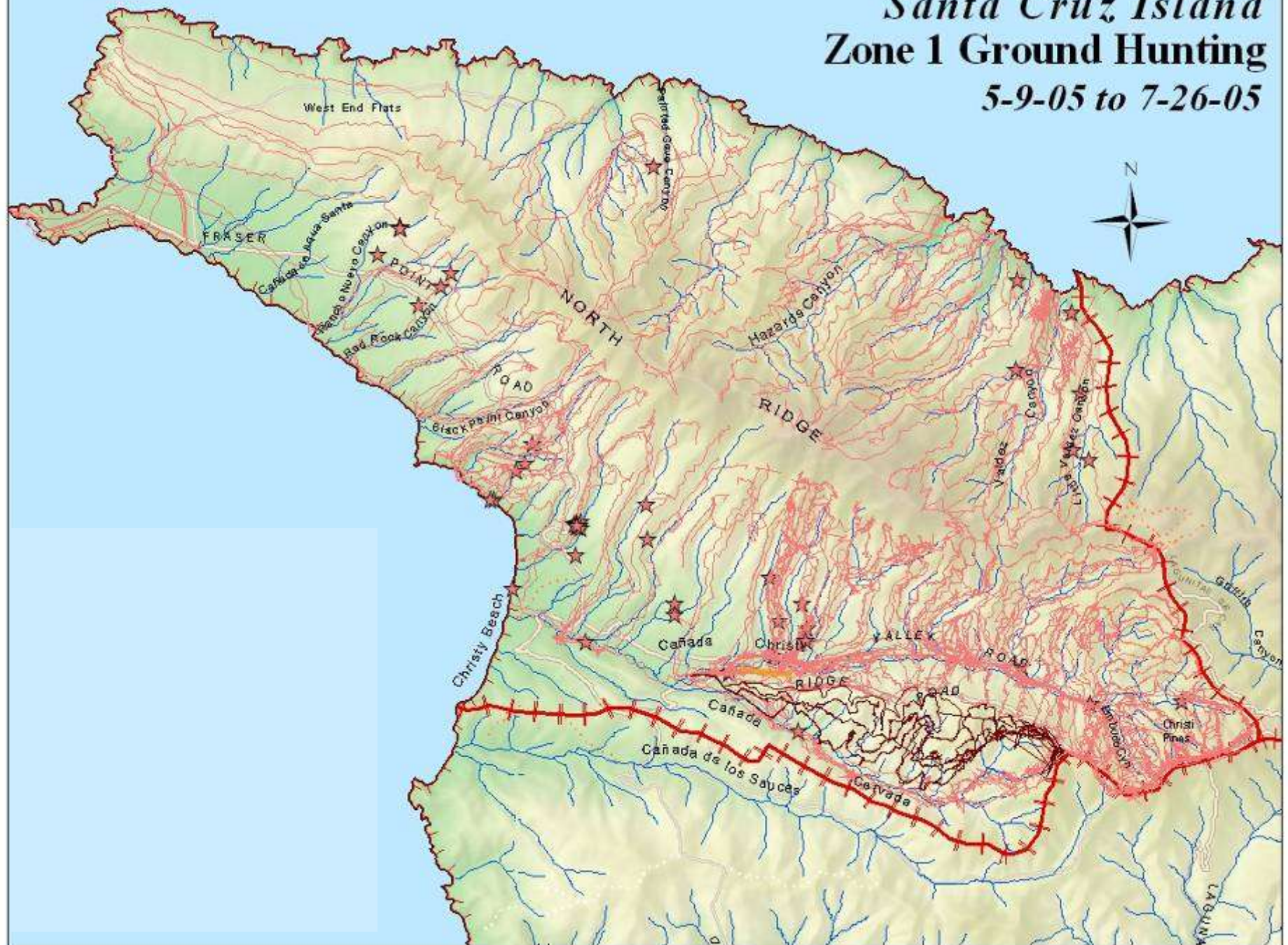
Santa Cruz Island **Zone 1 Ground Hunting** *5-9-05 to 7-26-05*



Santa Cruz Island **Zone 1 Ground Hunting** *5-9-05 to 7-26-05*



Santa Cruz Island **Zone 1 Ground Hunting** *5-9-05 to 7-26-05*



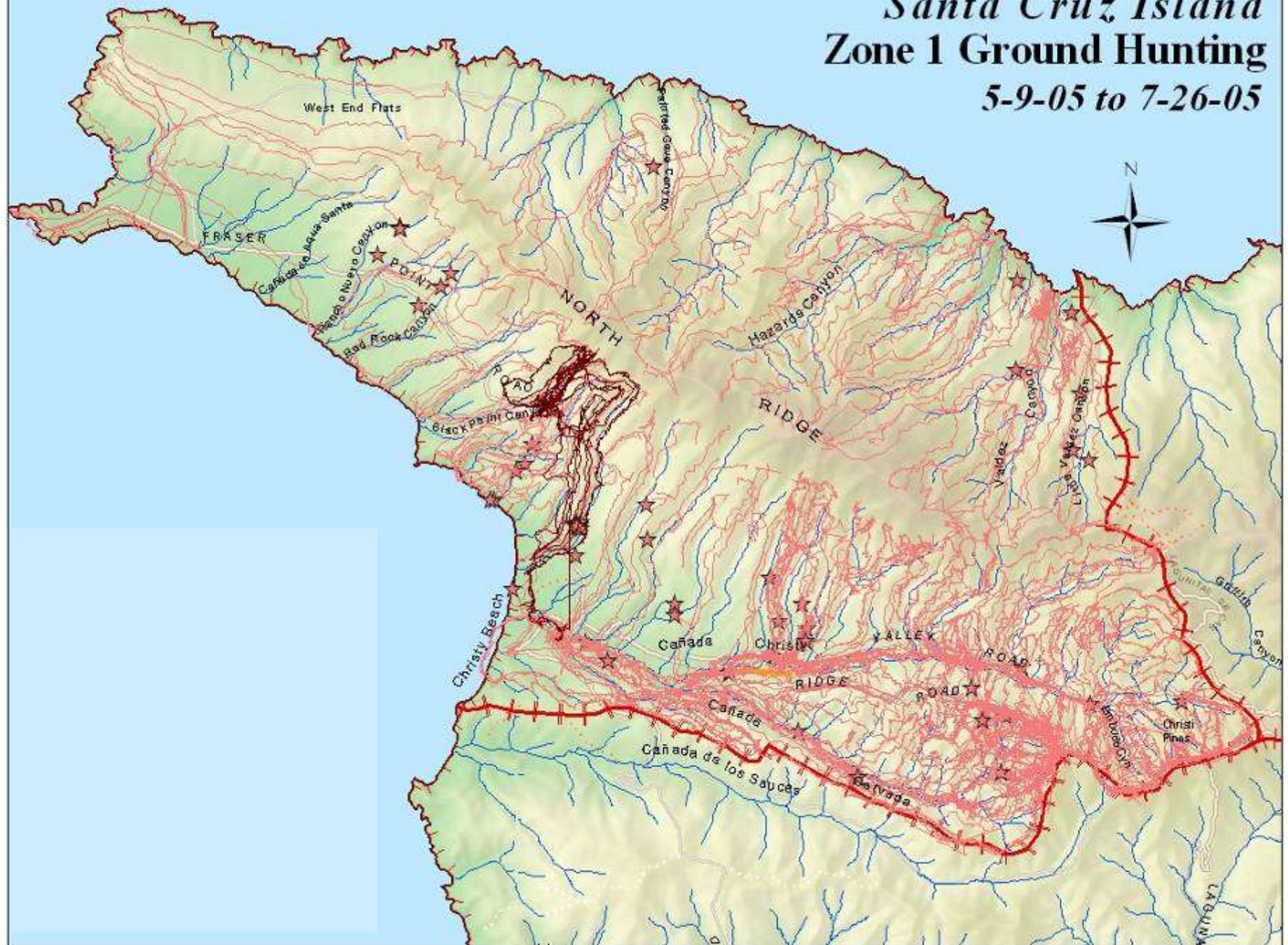
Santa Cruz Island **Zone 1 Ground Hunting** *5-9-05 to 7-26-05*



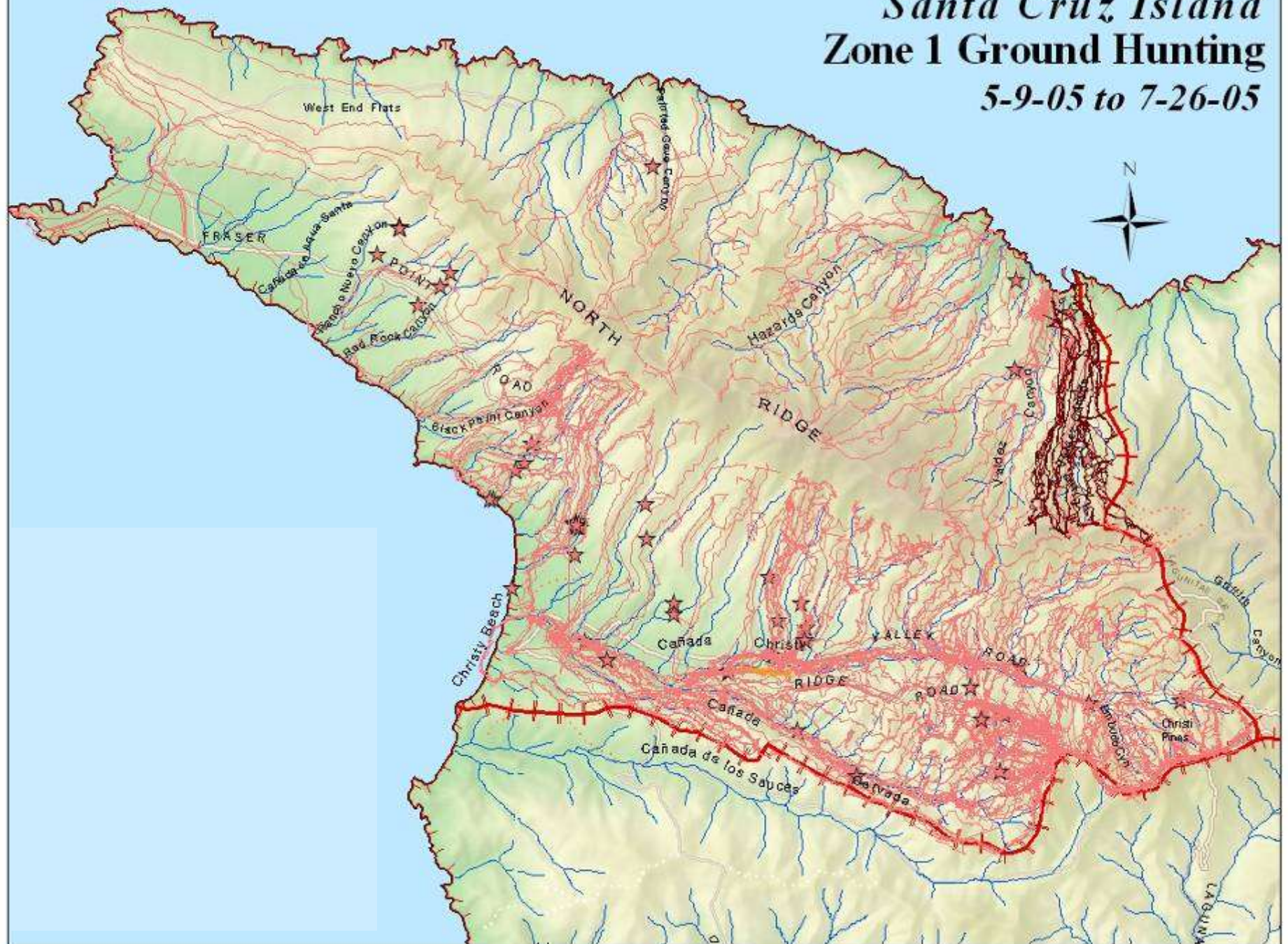
Santa Cruz Island **Zone 1 Ground Hunting** *5-9-05 to 7-26-05*



Santa Cruz Island **Zone 1 Ground Hunting** *5-9-05 to 7-26-05*



Santa Cruz Island **Zone 1 Ground Hunting** *5-9-05 to 7-26-05*



Santa Cruz Island **Zone 1 Ground Hunting** *5-9-05 to 7-26-05*



Santa Cruz Island **Zone 1 Ground Hunting** *5-9-05 to 7-26-05*



Santa Cruz Island **Zone 1 Ground Hunting** *5-9-05 to 7-26-05*



Santa Cruz Island **Zone 1 Ground Hunting** *5-9-05 to 7-26-05*



Santa Cruz Island **Zone 1 Ground Hunting** *5-9-05 to 7-26-05*



Santa Cruz Island

Zone 1 Ground Hunting

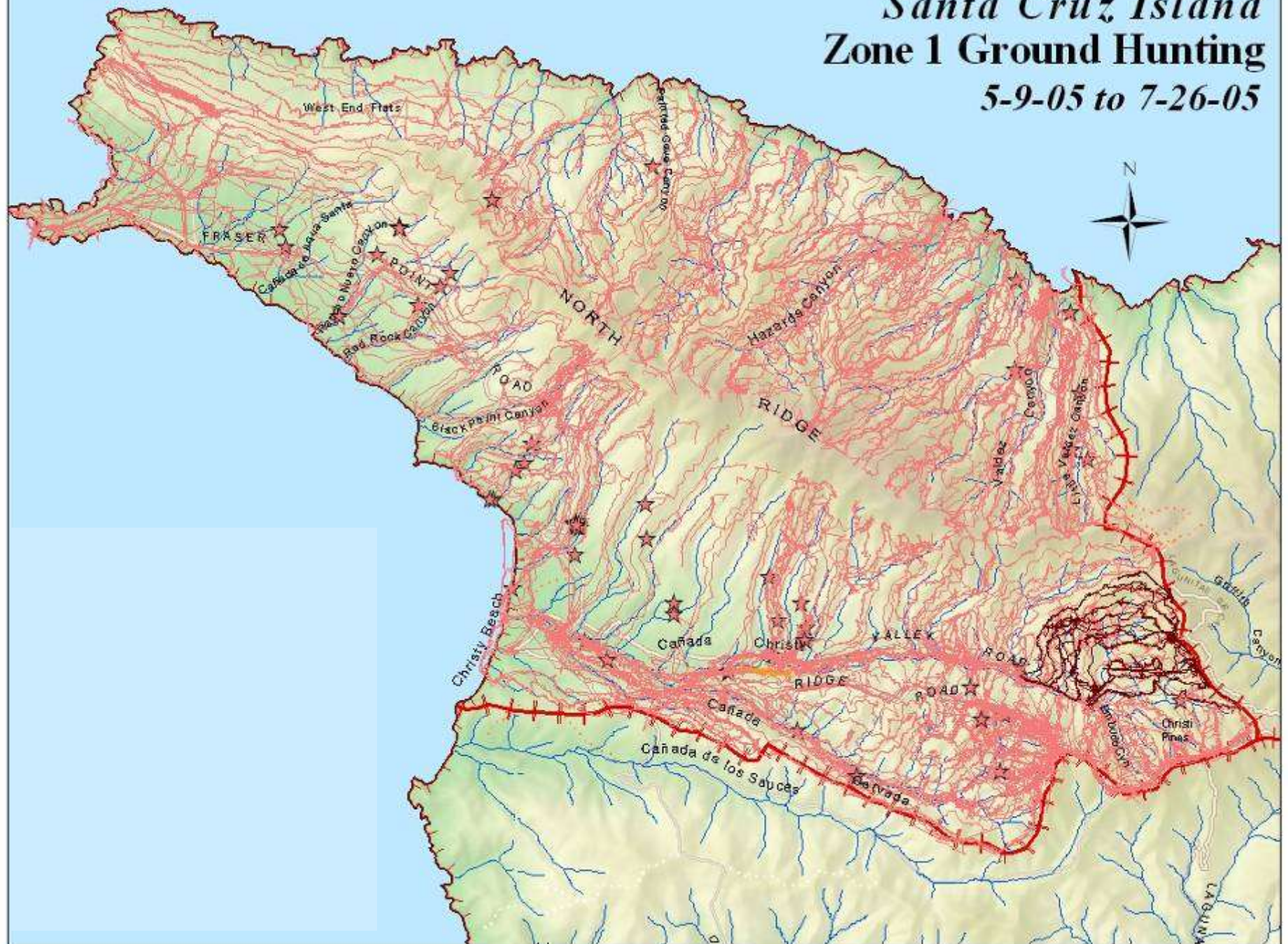
5-9-05 to 7-26-05



Santa Cruz Island **Zone 1 Ground Hunting** *5-9-05 to 7-26-05*



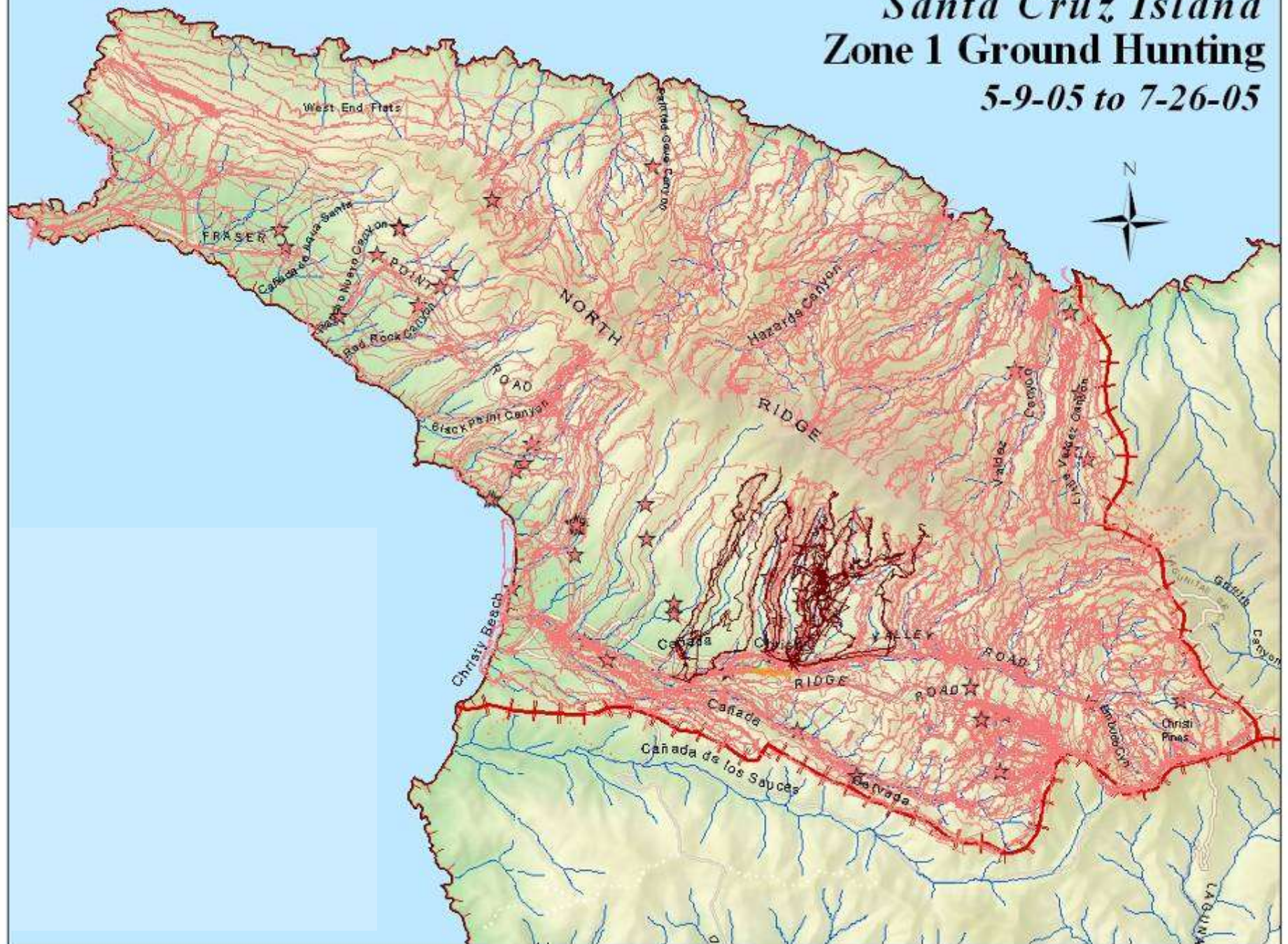
Santa Cruz Island **Zone 1 Ground Hunting** *5-9-05 to 7-26-05*



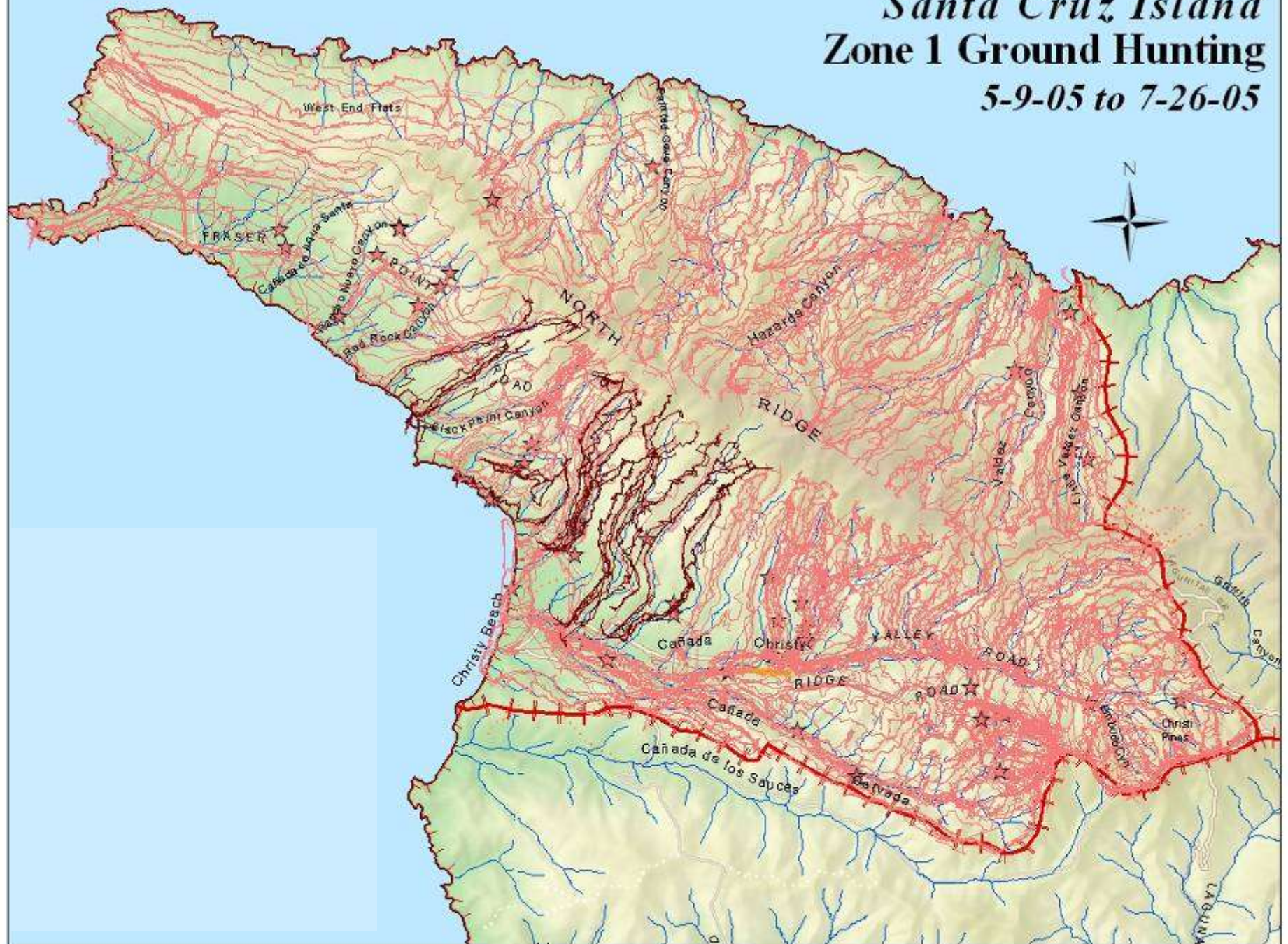
Santa Cruz Island **Zone 1 Ground Hunting** *5-9-05 to 7-26-05*



Santa Cruz Island **Zone 1 Ground Hunting** *5-9-05 to 7-26-05*



Santa Cruz Island **Zone 1 Ground Hunting** *5-9-05 to 7-26-05*



Santa Cruz Island **Zone 1 Ground Hunting** *5-9-05 to 7-26-05*



Santa Cruz Island **Zone 1 Ground Hunting** *5-9-05 to 7-26-05*



Santa Cruz Island **Zone 1 Ground Hunting** *5-9-05 to 7-26-05*



Santa Cruz Island **Zone 1 Ground Hunting** *5-9-05 to 7-26-05*



Santa Cruz Island **Zone 1 Ground Hunting** *5-9-05 to 7-26-05*



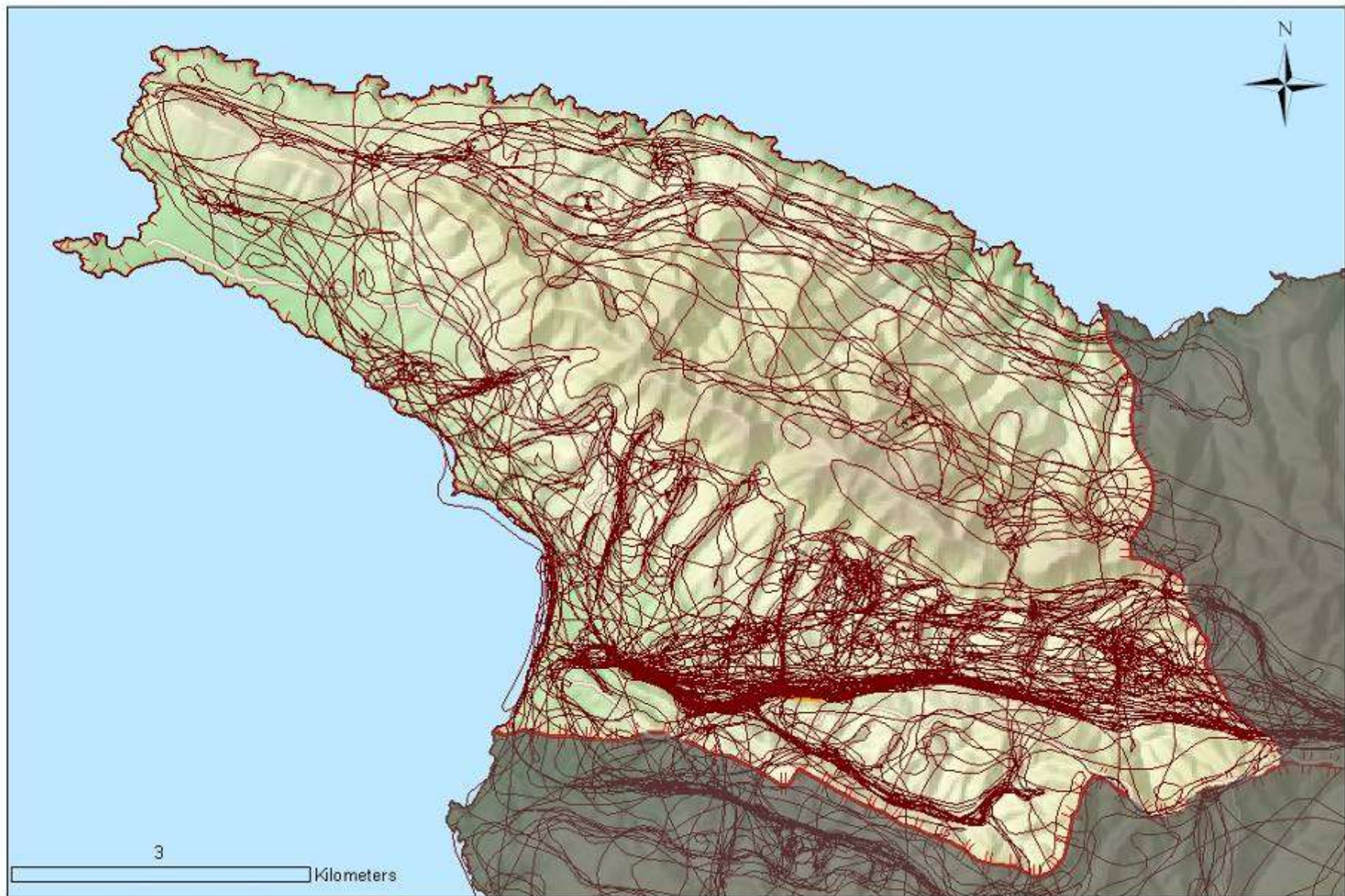
Santa Cruz Island **Zone 1 Ground Hunting** *5-9-05 to 7-26-05*

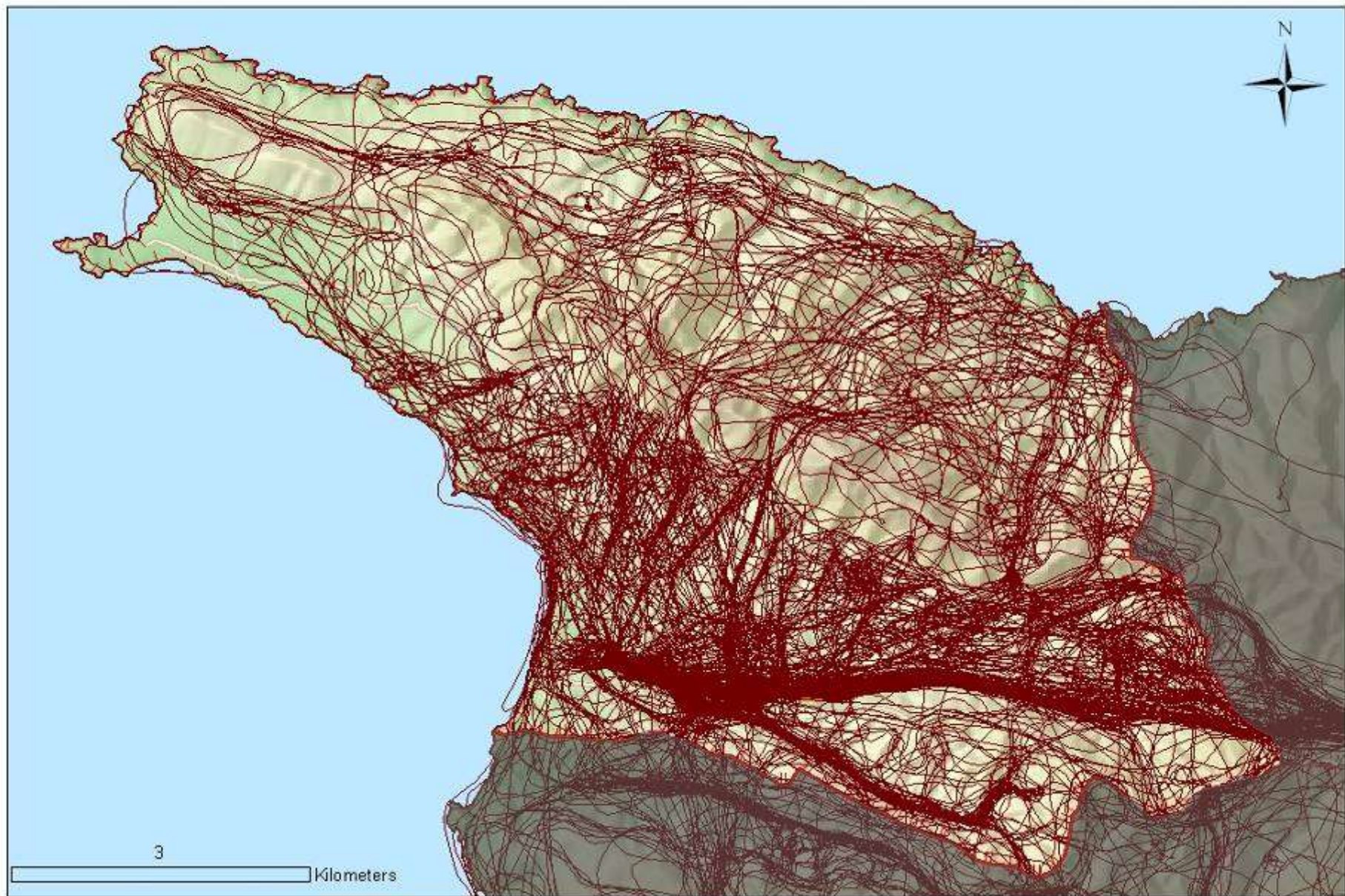


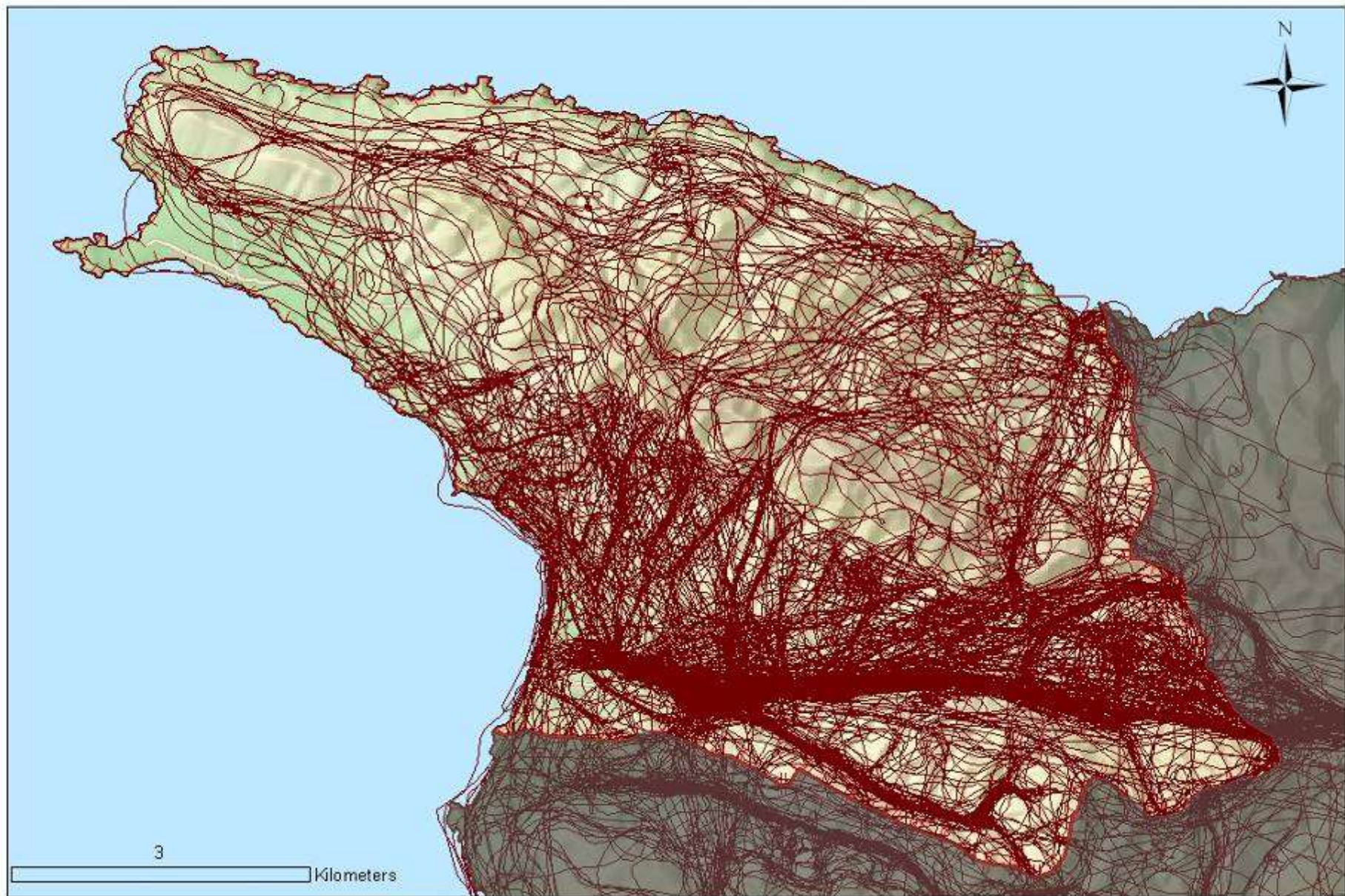
Santa Cruz Island
Zone 1 Ground Hunting
5-9-05 to 7-26-05

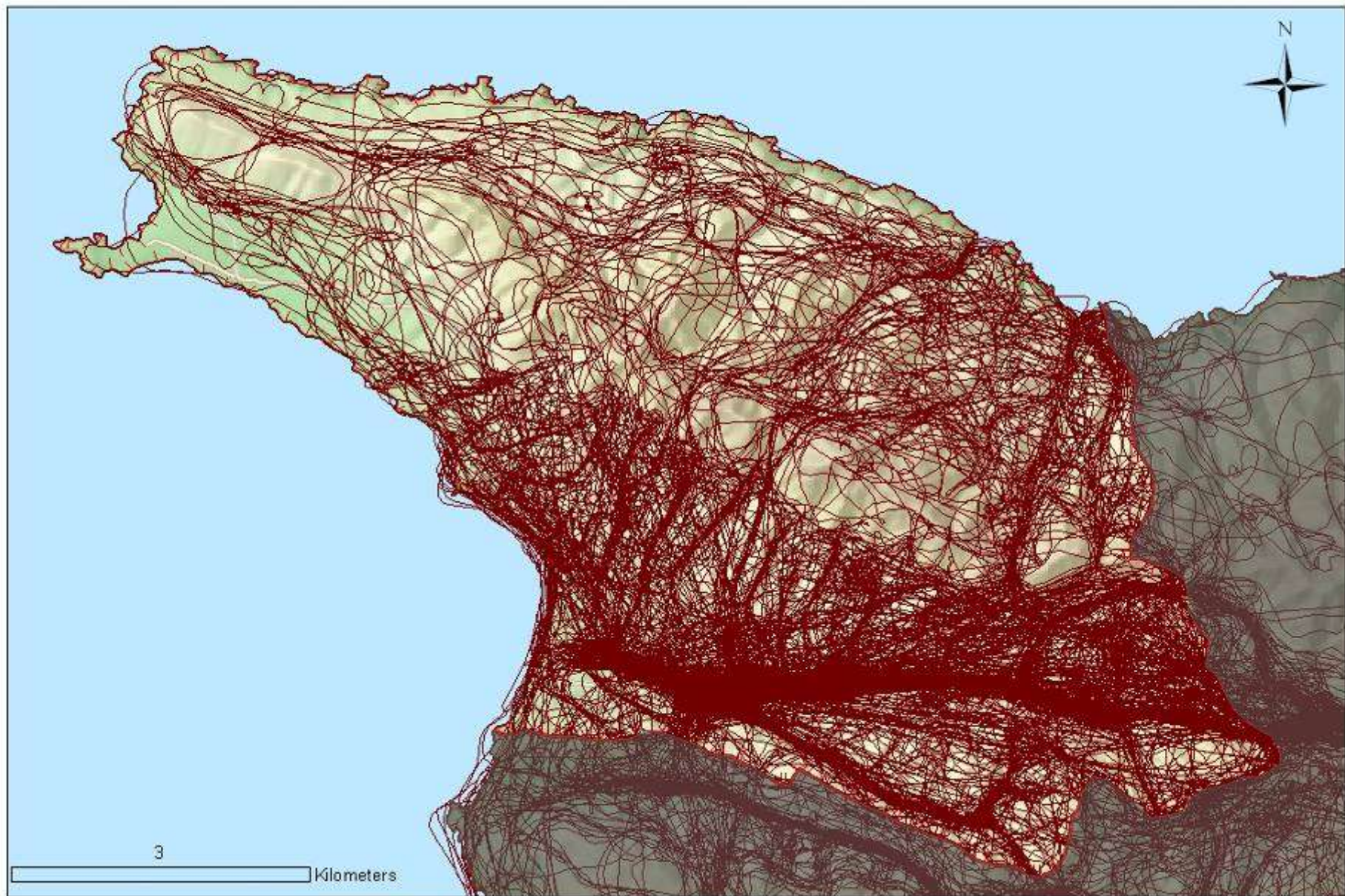


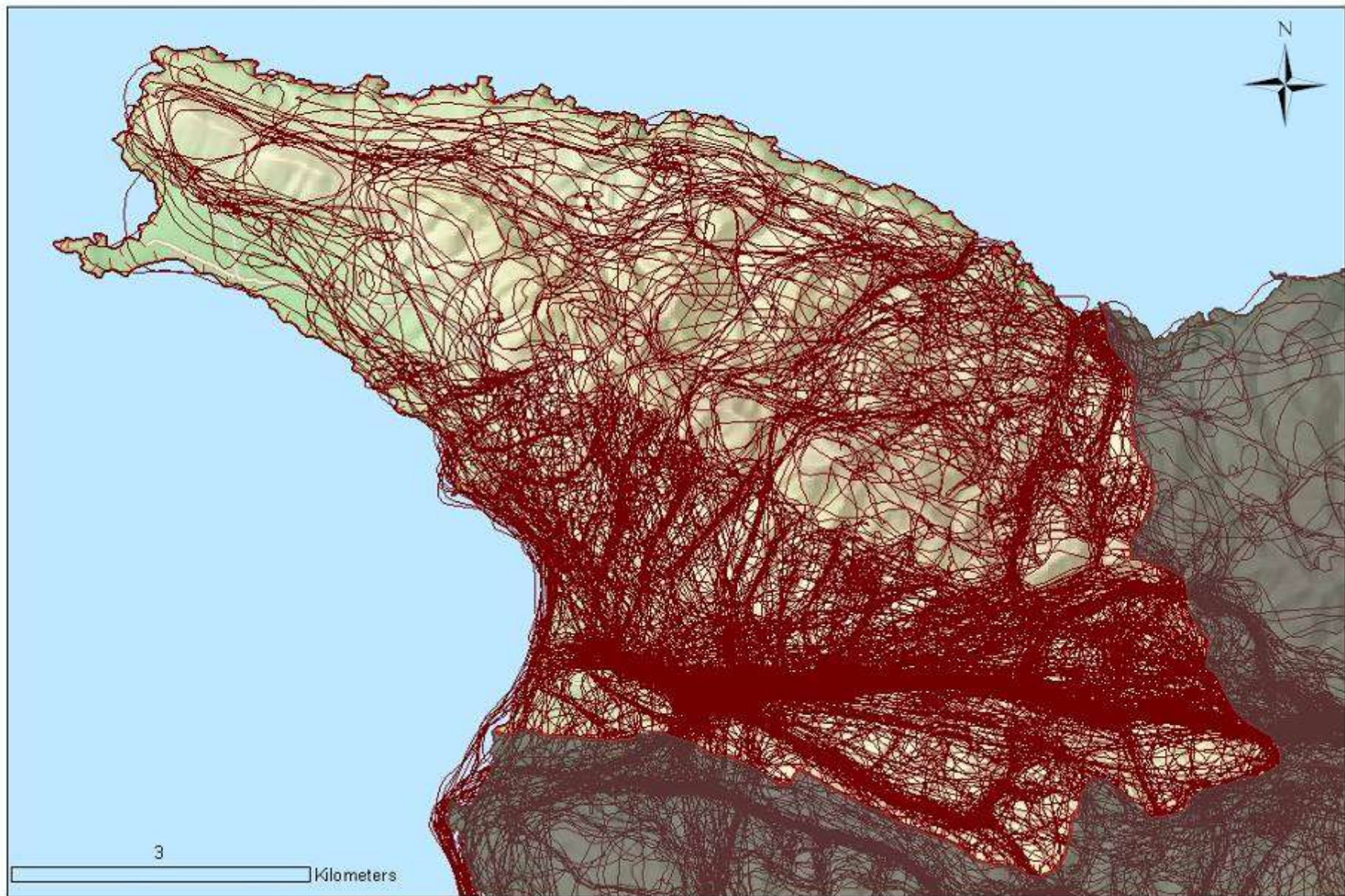


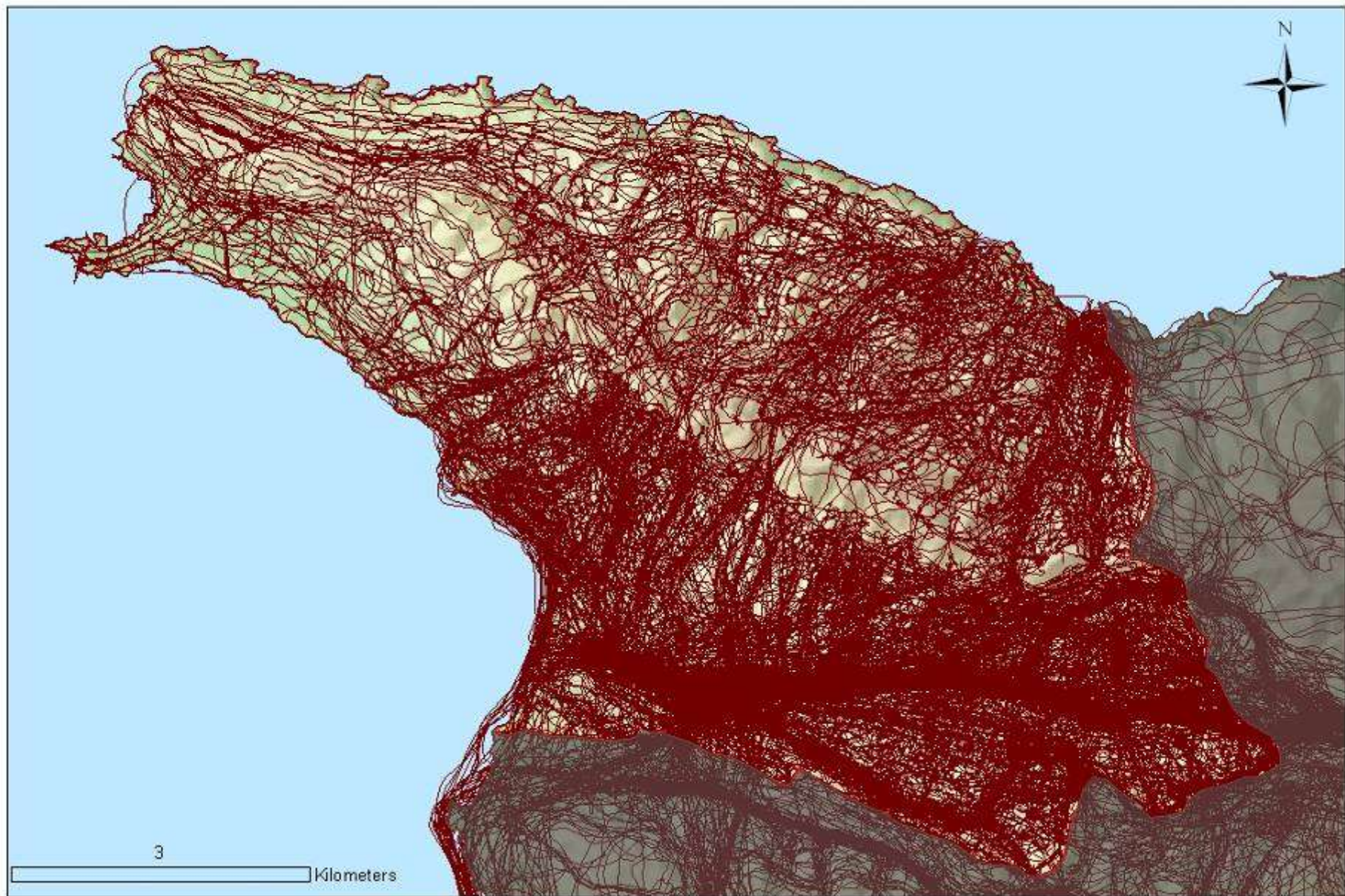




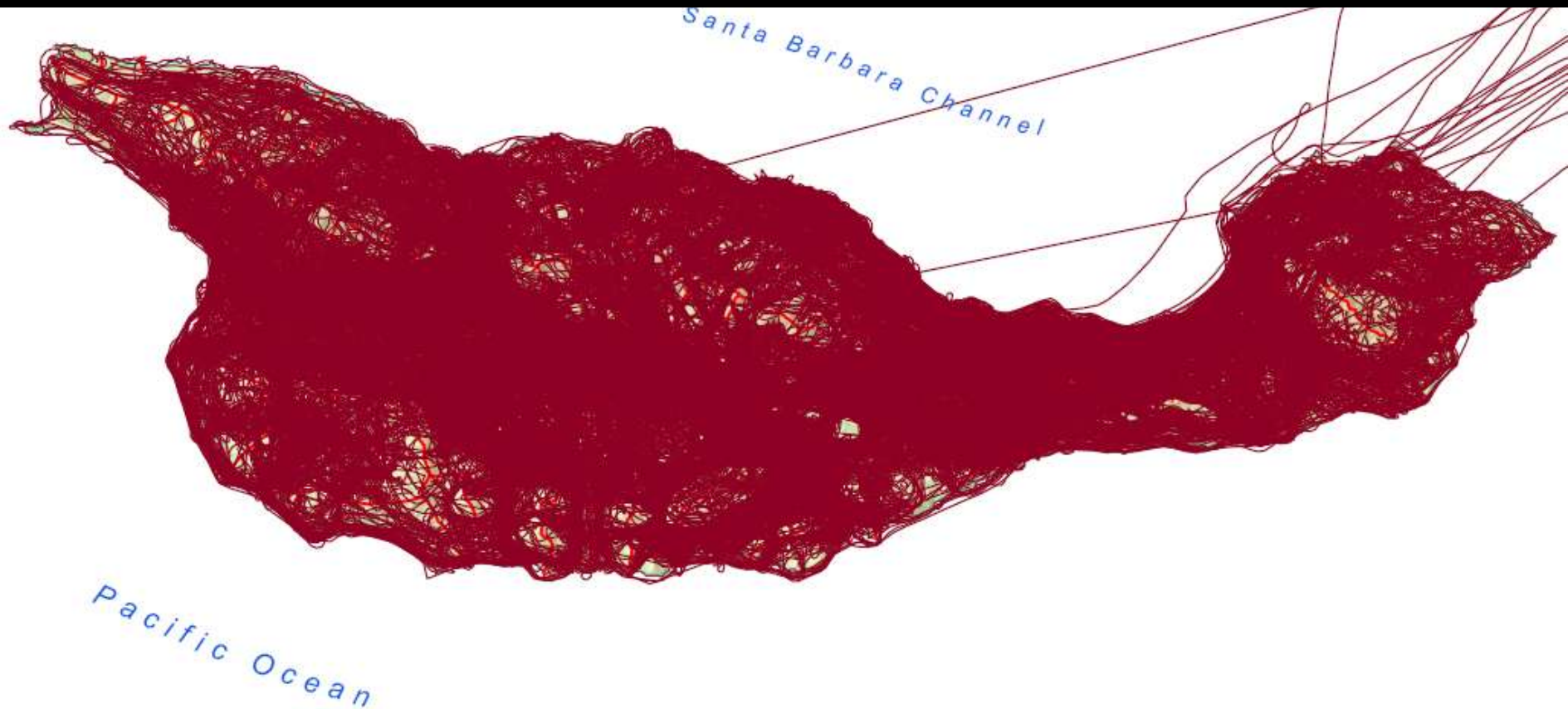




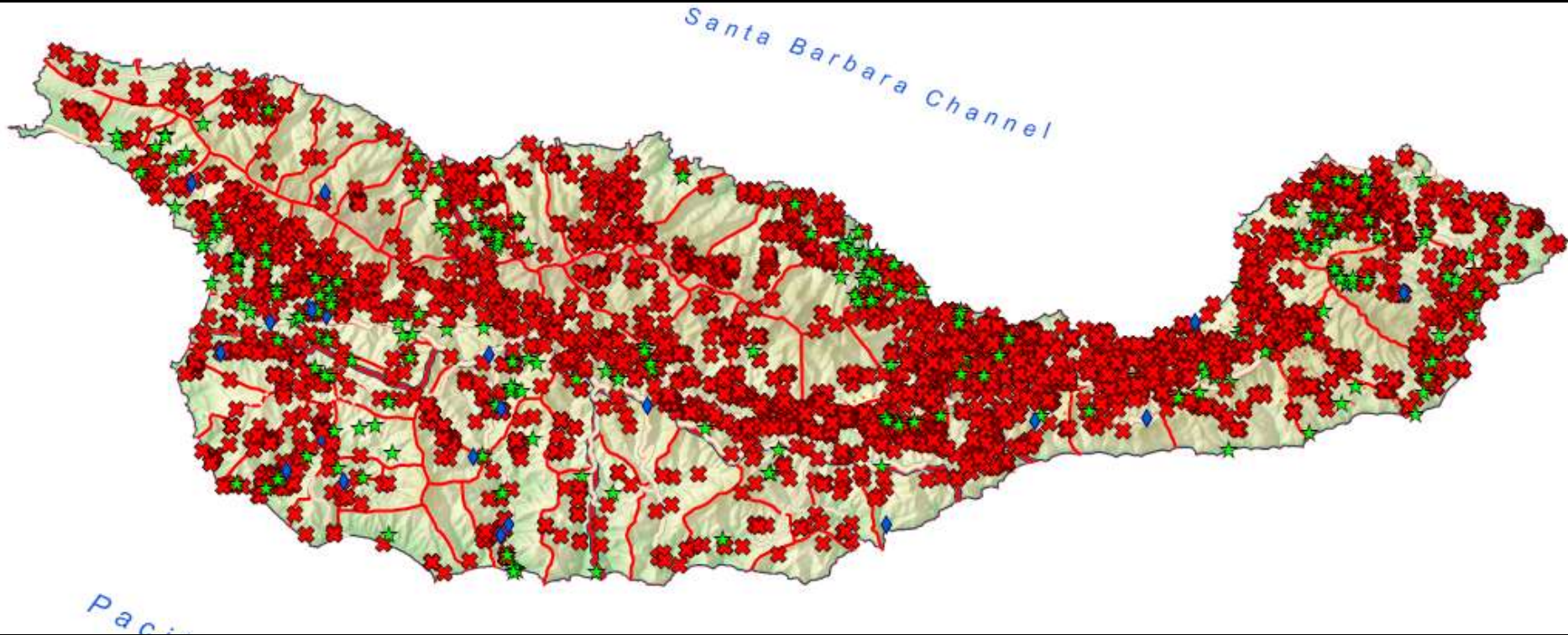




Cumulative effort

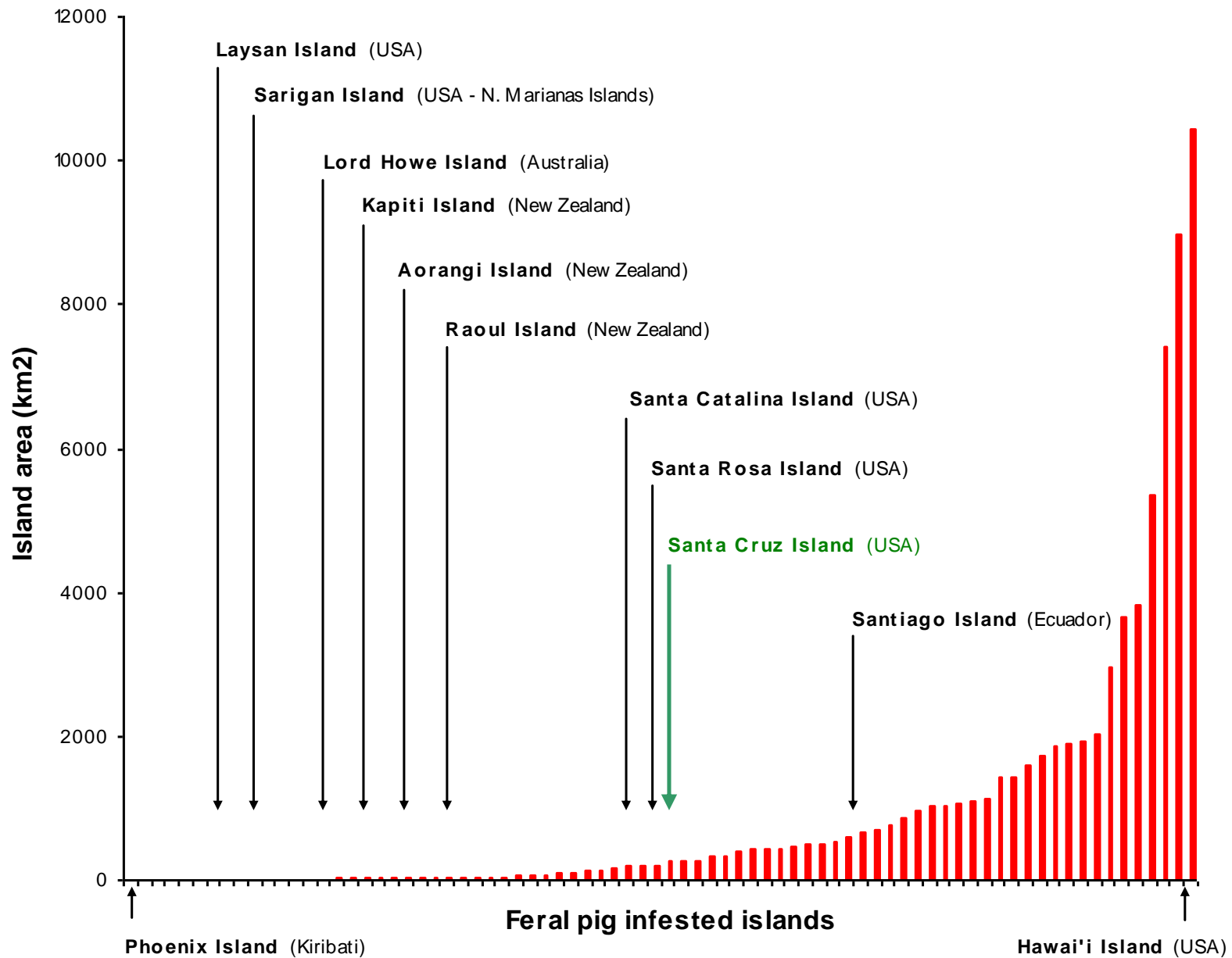


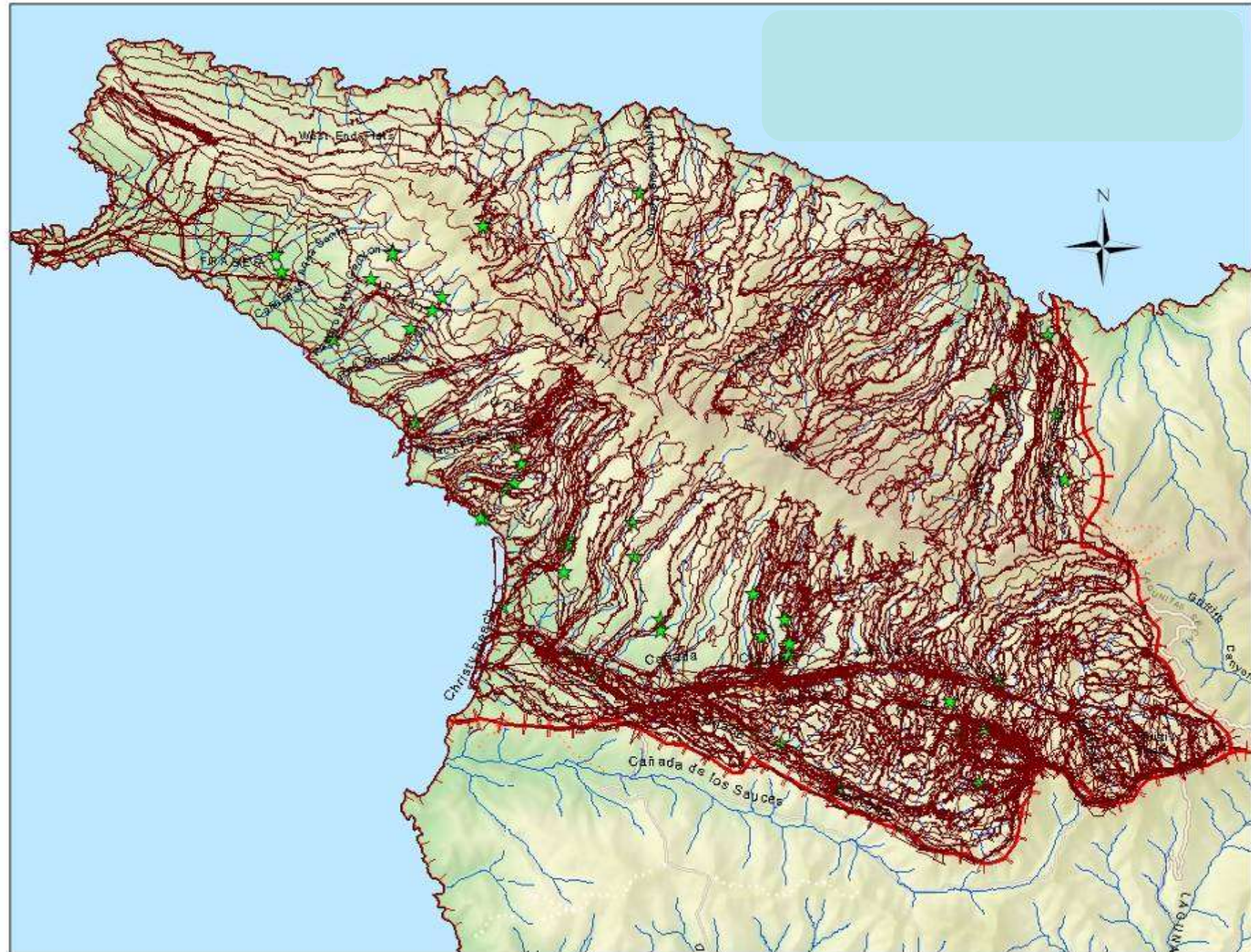
Cumulative outcomes



Pig dispatches by technique

Traps	765	15%
Aerial hunting	3854	78%
Ground hunting	262	5%
Miscellaneous	76	2%





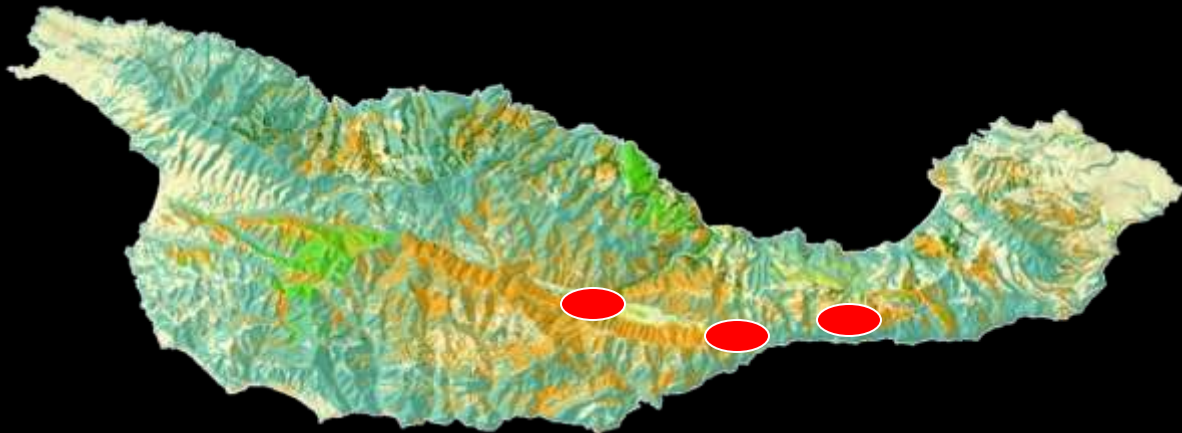


55 weed species, 5,944 populations mapped; 41 days

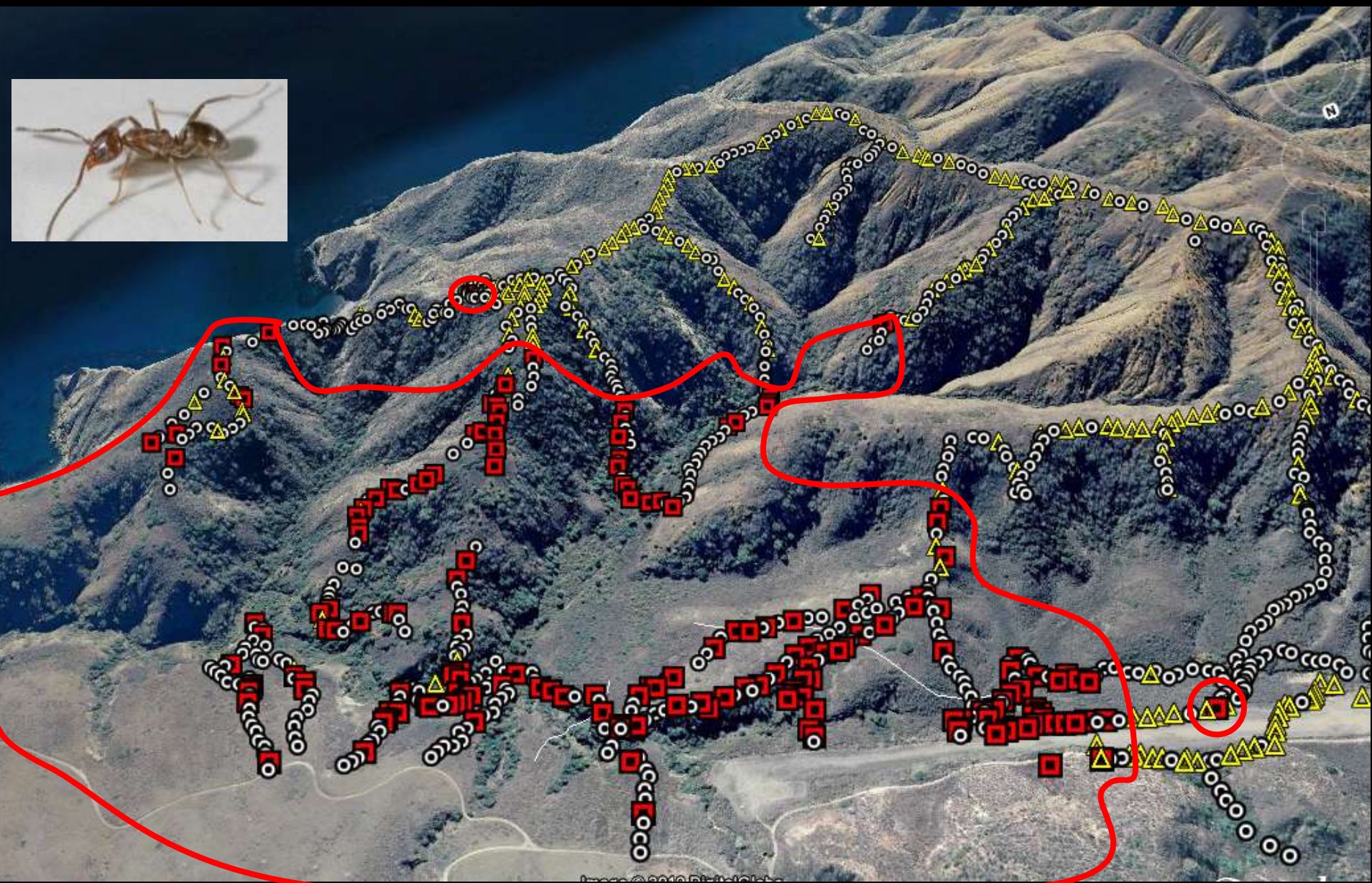


















**Importance of working across boundaries,
addressing problems at scale of relevance**



**Importance of a shared vision
and
leveraging institutional complements**



Anticipate cascades.



And leverage impact of pests that render others easier to control

Tip the balance in your favor.



**Seek efficiencies/economies of scale
of comprehensive engagement.**



They can also improve effectiveness.



Importance of “the story”



SANTA BARBARA NEWS-PRESS

Wendy McCaw Chief Executive Officer
Joe Cole President & Publisher
Travis Armstrong Editorial Page Editor

Amherst
Publishing LLC

OUR OPINION



NEWS-PRESS FILE

Santa Cruz Island's Hall of Shame

There are many unclean hands in the mass slaughter of wild pigs on Santa Cruz Island. This species has lived on the island for more than 150 years, but suddenly the National Park Service and the Nature Conservancy want to kill every last one of them.

Speculation is that the multimillion-dollar campaign — with taxpayers footing much of the bill — partly

has the goal of opening up the island to more lodging or camping. The former park superintendent has exposed the misuse of the media, science and the environmental review process in the effort to kill up to 4,500 pigs over several years.

Below is the Santa Cruz Island Hall of Shame, made up of officials who either through their actions or inactions have helped turn the island into a killing field.



Rep. Lois Capps



Park Manager
Kate Faulkner



Park Superintendent
Russell Galipeau



Rep. Elton Gallegly



National Park Service
Regional Director Jonathan
Jarvis



Norm MacDonald of New
Zealand-based ProHunt



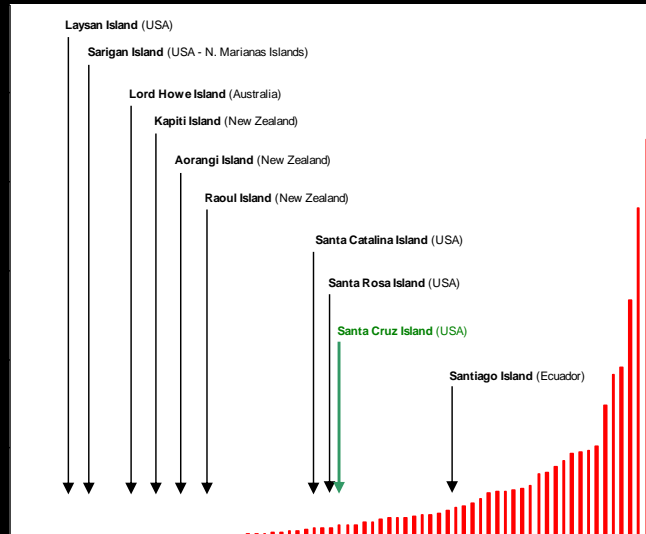
Nature Conservancy Presi-
dent Steven J. McCormick



Former Interior Secretary
Gale Norton

SANTA BARBARA NEWS-PRESS **VOICES** SUNDAY, APRIL 16, 2006

Make efficiency part of that story.



Think big.



And plan for the long haul.



Thank you.
And to all who have worked to restore
Santa Cruz Island

