

COMMUNICATION STRUCTURES IN COLLABORATIVE WEED MANAGEMENT



Rachel Kesel, One Tam

Andrea Williams, Marin Municipal Water District

Eric Wrubel, National Park Service

Pete Frye, Marin County Parks

MT. TAMALPAIS



ONE TAM COLLABORATIVE STRUCTURE

TLC GOVERNANCE STRUCTURE



TAMALPAIS LANDS COLLABORATIVE

EXECUTIVE TEAM

Comprised of the executive officers of each of the five TLC partners; provides overarching guidance on the partnership's direction and priorities.

WORKING GROUP

Develops and manages the work plan, budget, and day to day operations of the TLC. Members also serve as liaisons from the TLC to their home organizations.

COMMITTEES

COMMUNICATIONS

Develops shared messaging and communications pieces around TLC's work.

HEALTH ADVISORY

Guides the science-based study of the health of Mt. Tam's natural resources.

CONSERVATION

Carries out studies on and planning for enhancement of key natural resources while offering community science opportunities, and tracks and manages invasive plants on the mountain.

PROGRAMS

Coordinates the community science, restoration, youth, and other shared volunteer and educational programming.

PROJECT & PROGRAM SUBCOMMITTEES

Library Backpacks

Provides park passes for checkout at Marin libraries to increase access for the community to public lands.

West Peak

Leads the restoration effort of Mt. Tam's West Peak, a former Air Force base at the mountain's highest point.

Bolinas Lagoon

Leads the planning for helping this important ecosystem become more resilient to climate change.

Roy's Redwoods

Leads the development of concepts for enhancing and protecting this old growth redwood grove and providing a sustainable visitor experience.

Wildlife Picture Index Project

Directs all aspects of the remote sensing wildlife camera program.

Bat Inventory

Oversees the coordination and implementation of 3-year bat inventory.

Early Detection Rapid Response

Oversees the protocol development, data management and implementation of EDRR program.

Pollinator Inventory

Oversees the coordination and implementation of 2-year inventory of pollinators.

Seeps & Springs Inventory

Oversees the coordination and implementation of 2-year inventory of seeps and springs.

Volunteer Work Days

Coordinates quarterly mountain-wide volunteer events, drawing 100+ volunteers to help restore habitat, maintain trails, and more.

Outreach, Interpretation, & Roving Ranger

Manages the Roving Ranger program, a mobile trailhead and mountain education hub, and leads outreach efforts to engage the wider Marin community in the TLC's work.

Youth Initiative, Internships, & LINC

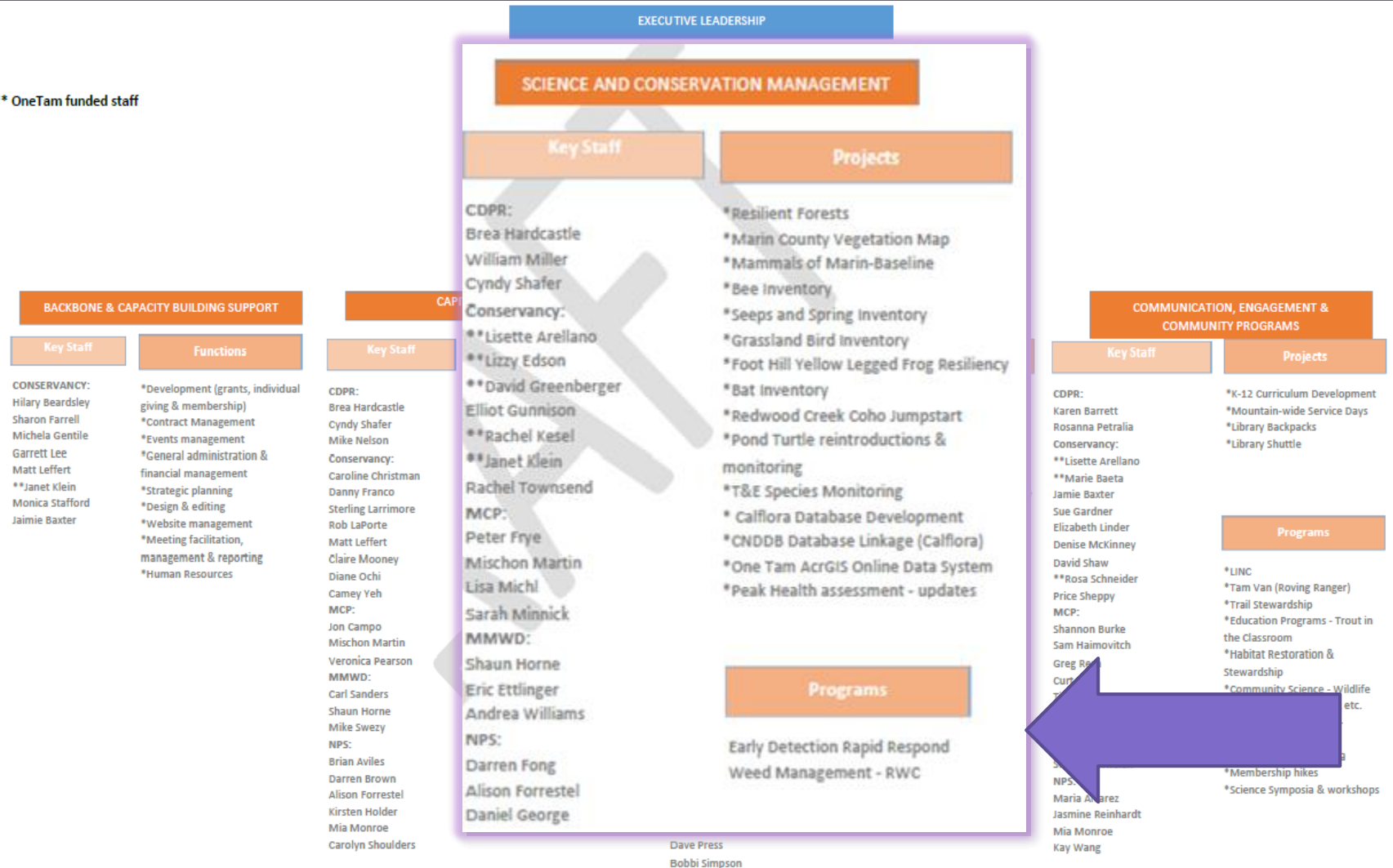
Plans and implements programs that provide youth opportunities to gain place-based educational and work experience in natural resources.

One Tam Community Ambassador Program

Builds a team of dedicated volunteers that help connect our work to the Marin community.

ONE TAM COLLABORATIVE STRUCTURE

** OneTam funded staff

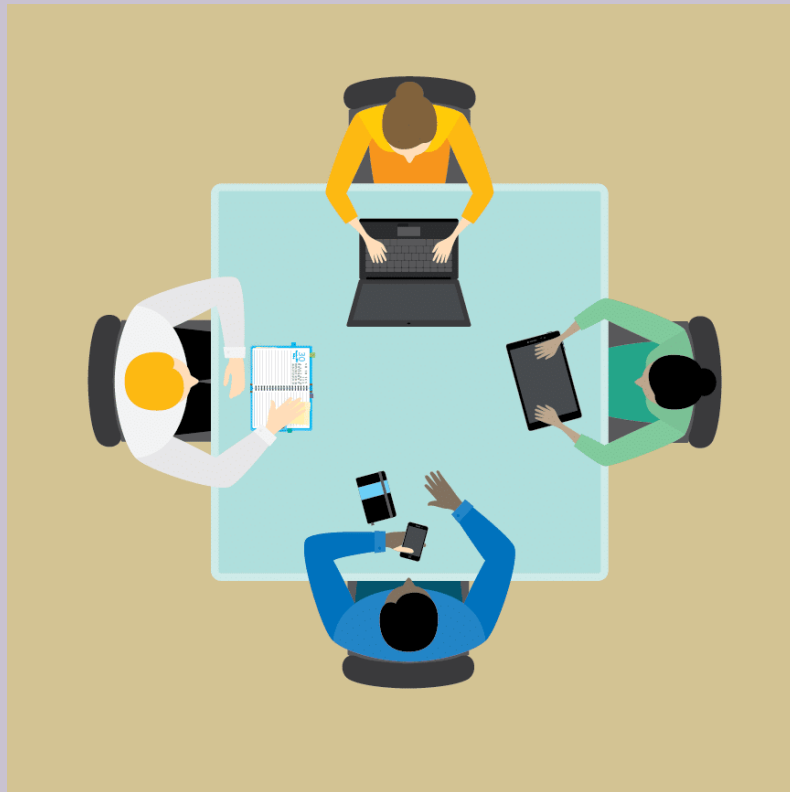


SCIENCE & CONSERVATION MANAGEMENT (SCMWG)



- Monthly Aug – Feb
- Veg + wildlife staff
- Guides programs
- Guides projects
- Informed by subgroups
- Presently in flux

EDRR SUBGROUP



- One representative from each organization... sort of.
- Reviews protocol
 - Including species list, which is reviewed annually.
- Guides use of Weed Manager
- Sends recommendations to larger Science and Conservation Management Working Group

AGENDAS AND MEETING NOTES

TLC CONSERVATION MANAGEMENT TEAM

DRAFT NOTES

August 30th, 2018

MMWD Headquarters – 220 Nellen Ave., Corte Madera

12 pm – 2 pm

Attendees - *Point Blue*: Tom Gardali; *NPS*: Alison Forrestel, Bill Merkle, Yoshi Higashide; *MMWD*: Andrea Williams, Shaun Horne; *CDPR*: Bree Hardcastle; *MCP*: Mischon Martin, Sarah Minnick; *Parks Conservancy*: Lisette Arellano, Rachel Kesel, Erin Lacour, Lizzy Edson, Janet Klein, David Greenberger, Allen Fish.

ACTION ITEMS, HIGHLIGHTS, DECISIONS, AND OTHER ITEMS OF INTEREST

- Return Health of the Mountain fill-in-the-blanks spreadsheet to Janet Klein by 9/7. Or let her know that you prefer to give feedback by phone.
- Tom will send Point Blue rangeland veg map data to Janet.
- One Tam volunteer appreciation barbecue on 10/13 at McNear's Beach
- One Tam staff picnic on 10/18 at McNear's Beach.
- Decision on future meeting structure tabled until next time.
- Send agenda items for September to Rachel. Agenda will feature Annual Work Plan.

ROLL OUT OF EDRR PROGRAM

Year One

- 2 staff
- 70 miles of roads & trails
- Pilot using modified NPS protocol
- Subgroup developed One Tam protocol draft in off season, then approved by full group
- Subgroup resolved Weed Manager issues... mostly



Photo credit: Lieven Leroy

EDRR PROTOCOL DEVELOPMENT

Year One

- Launched with 3 forms
- Quickly identified gaps and problems
- Slowly fixed those...mostly in the following year
 - Example: Confusion around whether points were ever okay
 - Example: One form lacked any time tracking info; lack of consensus on how to track time across agencies
- Large issues were tabled to 'off season'
 - Example: Creating one export with standardized fields for all groups

EDRR PROTOCOL DEVELOPMENT

Year Two

- Mostly fixed forms and time tracking confusion
- Developed fixes to some of our group searching and tracking problems

Year Three

- More partners funded development
- Fixed our point problem by creating point to polygon feature



FIELD SEASON COMMUNICATION STRUCTURES

Noteworthy Early Detections

Malfurada (*Hypericum grandifolium*)

In August, ISED discovered a new patch of about 20 malfurada plants growing in a disturbed, mesic ditch along Panoramic Highway near the Dipsea trailhead at Stinson Beach. It was intermixed with thoroughwort (*Ageratina adenophora*), another invasive shrub species. This new patch is about 200 meters north of a previously known patch. ISED observed another very large population along Highway 1 at Audubon Canyon Ranch, scattered throughout the riparian scrub in the Volunteer Canyon wetlands. Six new patches of malfurada were also discovered by the One Tam early detection Team Clarkia in July along Lagunitas Creek in Samuel P. Taylor State Park.

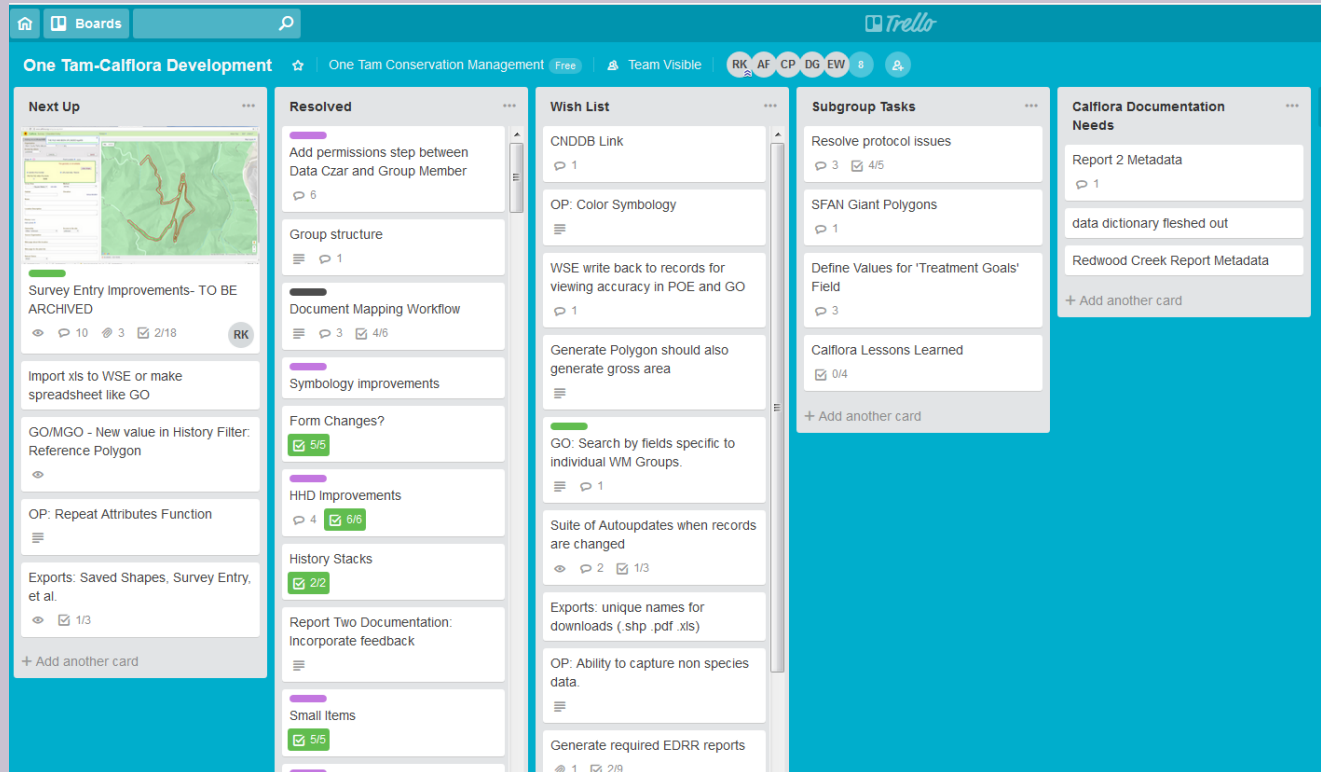


Malfurada and thoroughwort at Stinson Beach.

NPS / Eric Wrubel

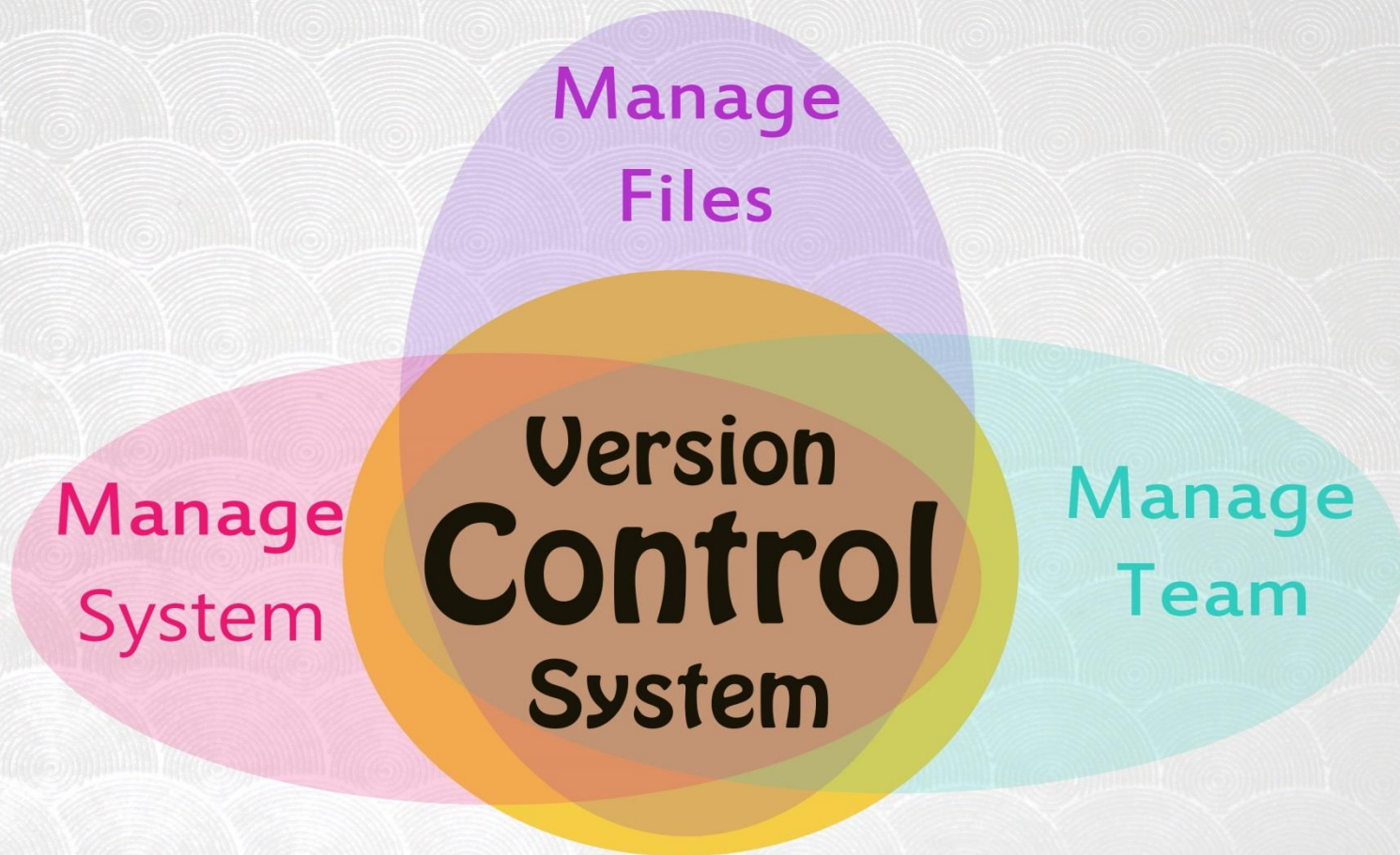
- Biweekly Conference Call
 - Robust Notes to larger group
 - Weed Manager links to EDs
 - Year-round
- Monthly ED News from NPS
 - Alerts a variety of staff to new observations of ED species
- Informal communications
 - Email with Calflora link to record, did you know about/are you going to treat this?

PROJECT AND DOCUMENT COMMUNICATION STRUCTURES

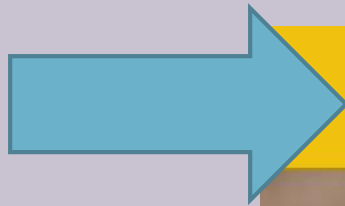


- Google Drive/Docs/Sheets/Calendars
- Trello

COMMUNICATION CHALLENGES



REGARDLESS OF WHERE IT LIVES, OUR DOCUMENTATION IS OUR GUIDE



these numerical boundaries. If you find a BUT it's ready to seed and it's unlikely if it's ecologically justifiable to treat PART of a creek or other corridor, then it might be case by case basis and not all scenarios can and the block and will advise.

CALIBRATION THROUGH COLLABORATIVE TRAININGS



Photo credit: Laurie Offenbach

STAYING FLEXIBLE

Sun
29

6

13

20

27



Slide Ranch - CQ

Slide Ranch

k!!!



QUESTIONS?

