

Dispatching the Monterey Bay Area's Mosaic of Invasive Plants

By Hannah Wallis, Agricultural Programs Biologist
Monterey County Agricultural Commissioner's Office

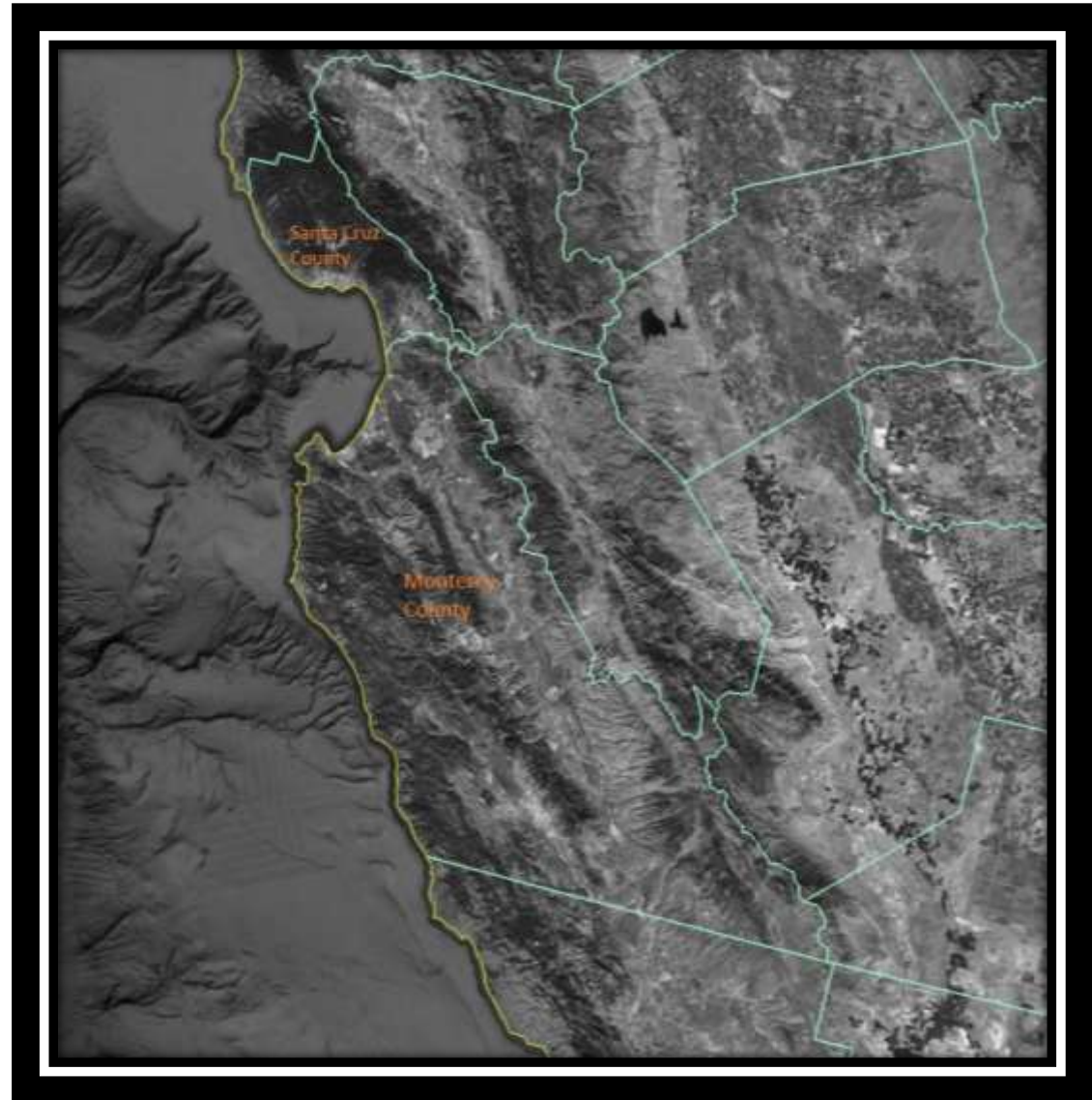
Nov 8, 2018

Cal-IPC Symposium

The Immediate Monterey Bay Area

- Santa Cruz County
 - 607 sq. mi (388,480 AC) total
 - 73% land
- Monterey County
 - 3,771 sq. mi. (2,413,440 AC) total
 - 87% Land

Collectively 2.8 million
Acres!



Monterey Bay Area Life

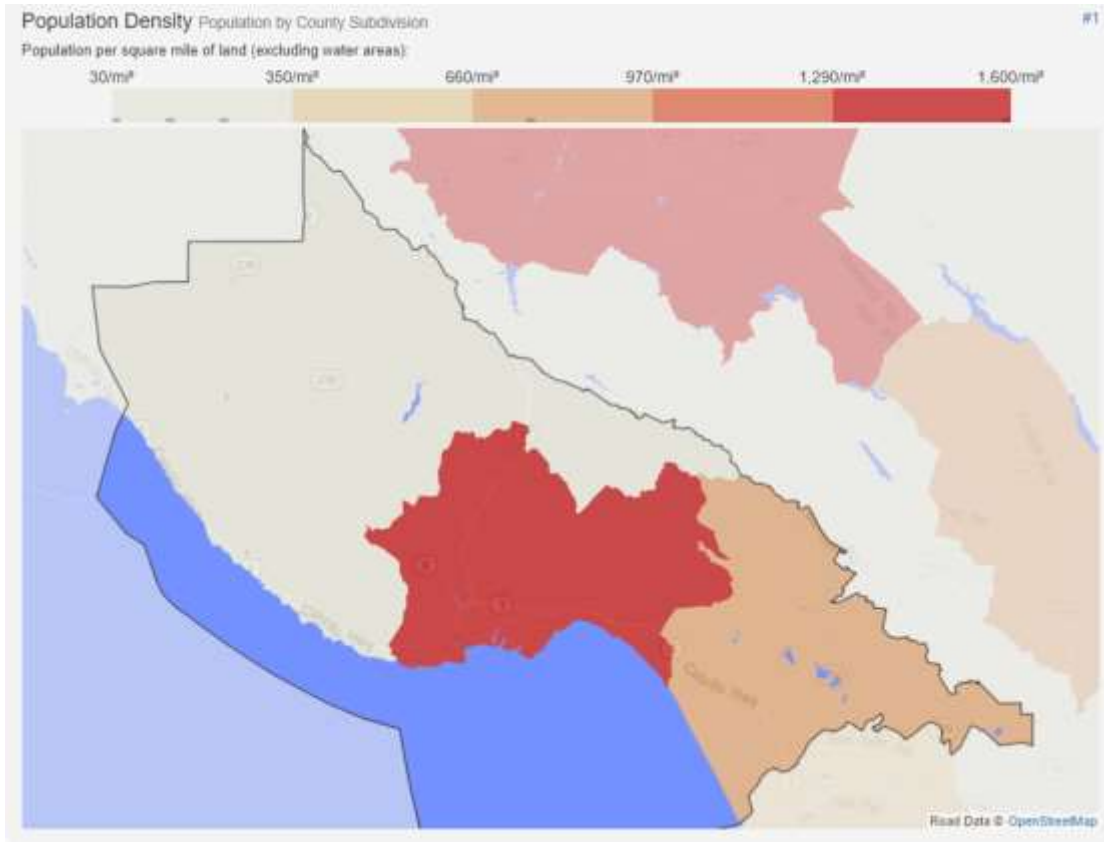
- Mountains
- Beach
- Agriculture
- Tourism



709,905 People (U.S.Census 2016)

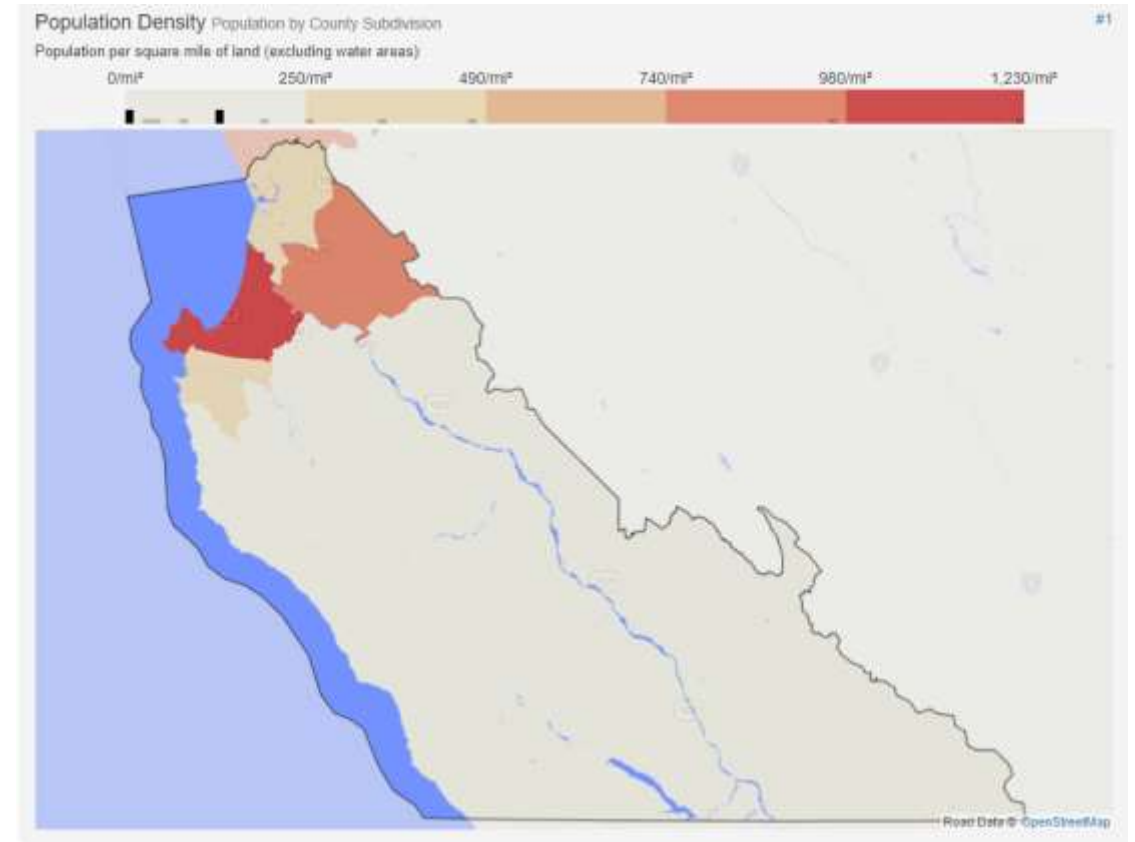
Santa Cruz County

Population 274,673



Monterey County

Population 435,232



"Population of Santa Cruz County, California (County)." *The Demographic Statistical Atlas of the United States - Statistical Atlas*, 6 Nov. 2018, 12:23, statisticalatlas.com/county/California/Santa-Cruz-County/Population#data-map/county-subdivision.

"Population of Monterey County, California (County)." *The Demographic Statistical Atlas of the United States - Statistical Atlas*, 6 Nov. 2018, 12:27, statisticalatlas.com/county/California/Monterey-County/Population#data-map/county-subdivision.





THE USUAL SUSPECTS

5'.0"

4'.5"

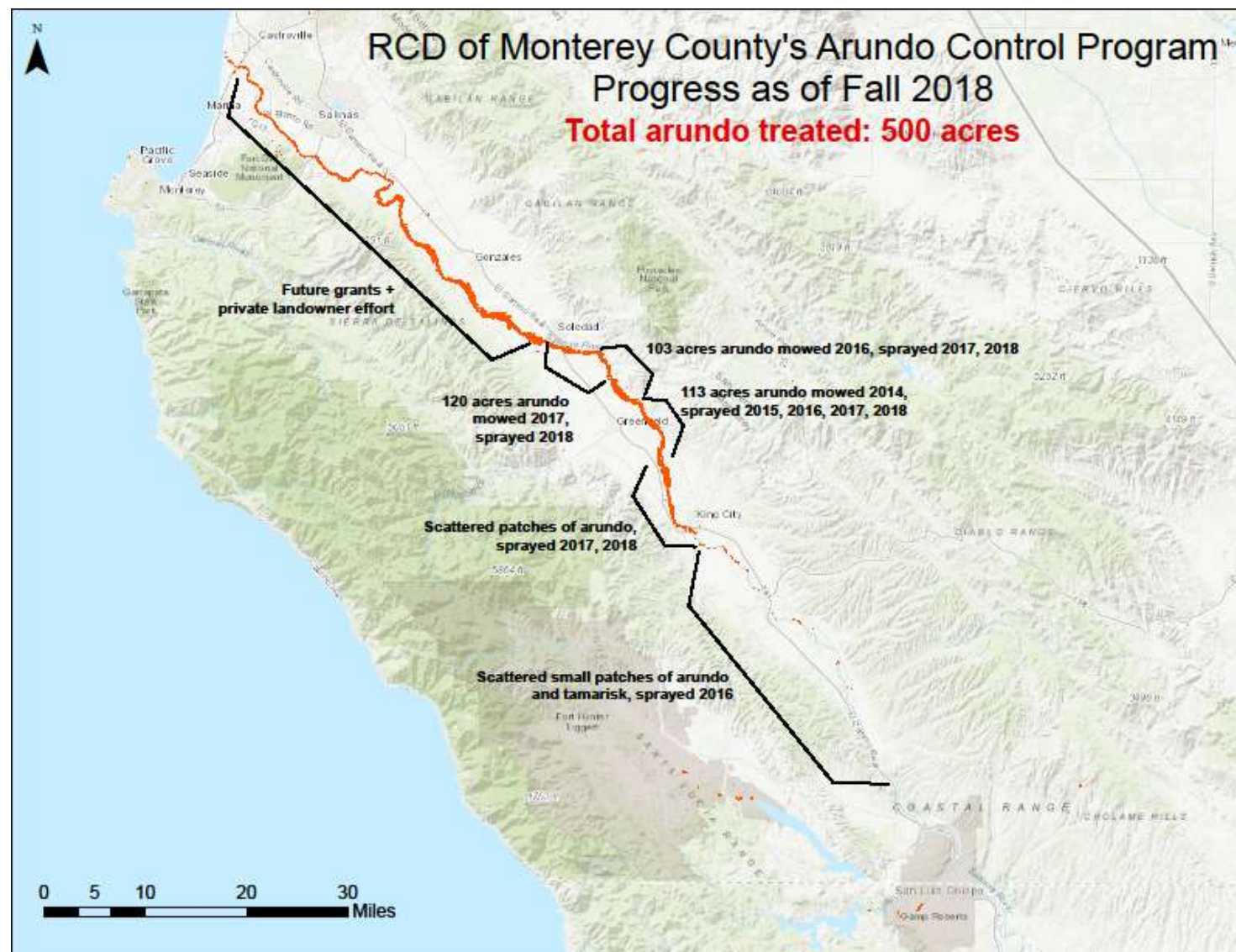
4'.0"

3'.5"

3'.0"















Bureau Of Land Management



Monterey County Agricultural Commissioner





Monterey County Agricultural Commissioner













Central Coast Wetlands Group

Photo 4. (C) 2002-2012 Kenneth & Gabrielle Adelman, California Coastal Records Project, www.Californiacoastline.org. Ice-plant dominates the foredune of SRSB. Here the dunes lie between the ocean and the Old Salinas River Channel and the Moss Landing Community.



Photo 1. Sarah Stoner-Duncan (CCWG). Ice-plant at SRSB over-stabilizes dunes leading to erosion of the dune face.





Central Coast Wetlands Group

Photo 2. Ross Clark (CCWG). Demarcation between restored section and unrestored section of dunes at SRSB.



Photo 3. Ross Clark (CCWG). Restored foredune with native plant species and gentle foredune topography



Date & Time: Thu Oct 1 06:35:18 PDT 2010
 Position: 10 10 000000 400000
 Altitude: 2000
 Azimuth/Heading: 330° 330° 100000 (deg)
 Direction: North +000
 Duration: 00:00
 User: 10
 Project:



Date & Time: Thu Aug 26 01:00:47 PDT 2010
 Position: 10 10 000000 400000
 Altitude: 2000
 Azimuth/Heading: 330° 330° 100000 (deg)
 Direction: North +000
 Duration: 00:00
 User: 10
 Project: Ditching graveling, Glenwood Preserve



LAND
 TRUST
 OF SANTA CRUZ
 COUNTY





Monterey District

- 27 state parks in Monterey county
- 18,800 acres

Santa Cruz District

- 17 parks in Santa Cruz County



Zmudowski State Beach
Ammophila sp. Treatment



Zmudowski State Beach
Ammophila sp. After Treatment



Zmudowski State Beach
Ammophila sp. Before Treatment

Carpobrotus edulis and *Conicosia pugioniformis* before treatment
Ft. Ord Dunes State Park



Carpobrotus edulis and *Conicosia pugioniformis* during treatment
Ft. Ord Dunes State Park





Starting here is the untreated area of nerly 100% cover.


This hillside was treated previously but now is starting to become infested with Jubatagrass once again.

Below is the ephemeral Ellicott pond where the endangered SCLTS and treatend CTS



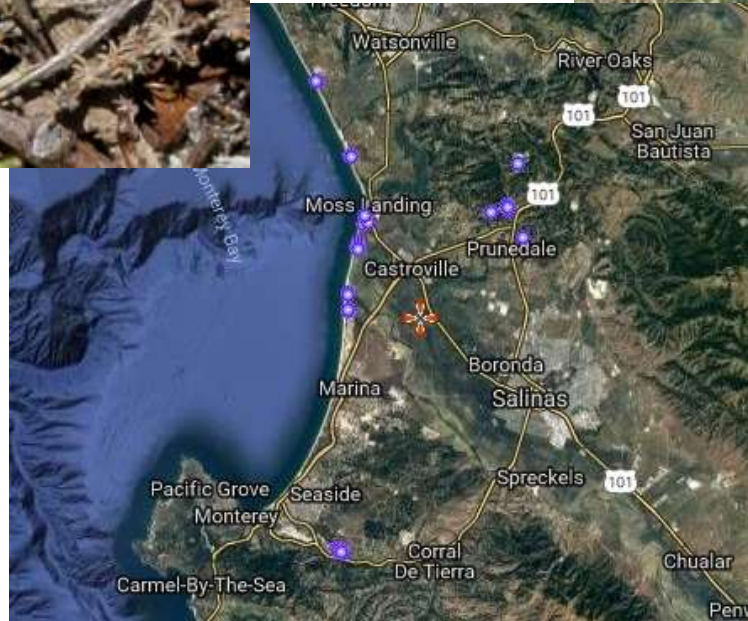






Rancho Tierra Grande
Fire Safe
French Broom Haul Out

Friends of Manzanita Park Endangered Species Protection and Mapping





South Monterey County
Rural Coalition
YST Demonstration Project

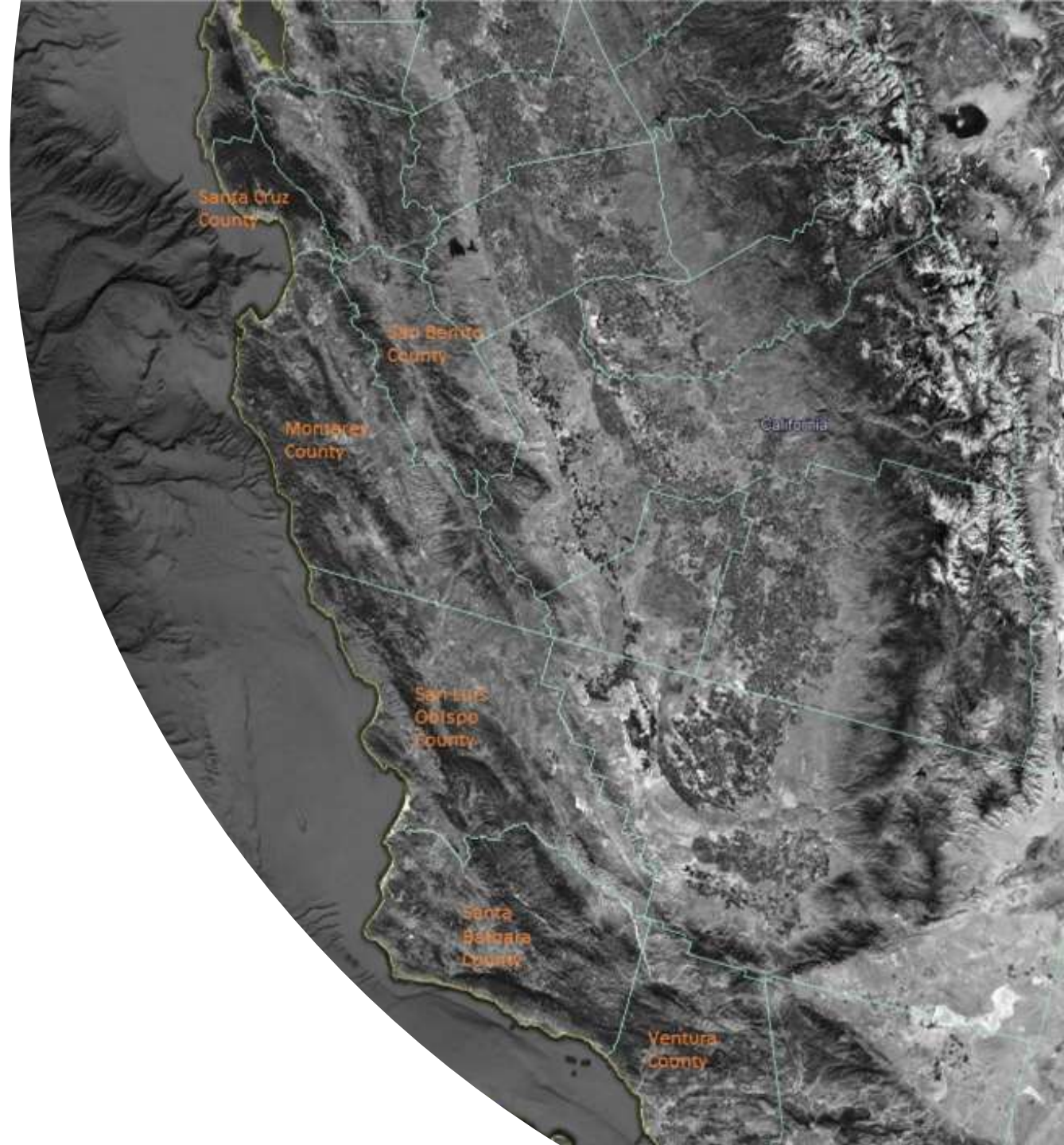






Broader Monterey Bay Area

- Monterey County
- Santa Cruz County
- San Benito County
- Parts of Santa Clara County
- Parts of San Luis Obispo County



THE USUAL SUSPECTS

5'.0"

4'.5"

4'.0"

3'.5"

3'.0"



WMA's are the framework that future state wide weed programs will be rebuilt on.

Keep them healthy by:

- Participating in meetings
- Utilizing the WMA's to obtain grant funding for collaborative projects
- Participate in Weed Day at the Capitol with Cal-IPC
- Encourage Ag Commissioner's, County Supervisors, State and Federal Agencies and Representatives to utilize resources for weed management





Hannah Wallis
Agricultural Programs Biologist
Monterey County Agricultural Commissioner's Office
(831)759-7332
wallisha@co.monterey.ca.us

