



2017 Update

SF Bay Sea Lavender



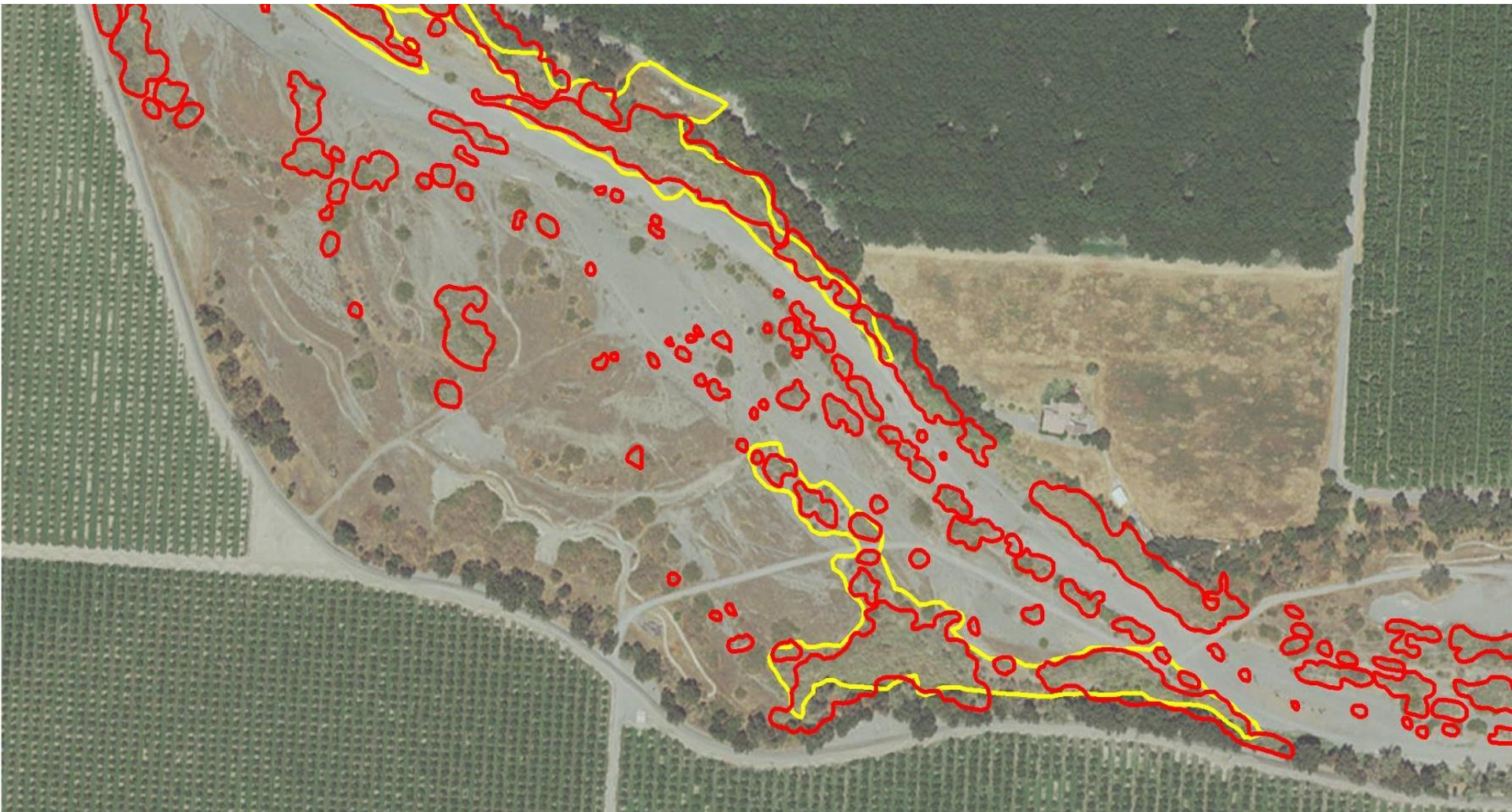
North Coast Knotweeds



Voluntaria Containment



Central Valley *Arundo* Mapping





Sierra burn/tree mortality

2017 Inventory Update

- Added 80+ species in new “Watch” category
- Per new national guidelines:
 - Had horticultural expertise on review committee
 - Put draft out for 60-day public review
- Now preparing for 2018 update

Advocacy

- Invasive Species Summit in Sacramento in January
- Hired an environmental lobbying firm
- Goal is a funded state weed program

Policy on Glyphosate

Cal-IPC supports the use of glyphosate in invasive plant management as part of an Integrated Pest Management (IPM) approach. When using glyphosate according to the label, with appropriate personal protective equipment and best practices, glyphosate is low-risk for wildlife, applicators and the public.

Landscaping guidelines

- CALGreen building codes
- PlantRight partnership



Mapping

1. Calflora email alerts - choose area and plants
2. Integrating with EDDMapS
3. Working on data sharing through NAISN



NORTH
AMERICAN
INVASIVE
SPECIES
FORUM



Protecting California's environment and economy from invasive plants

[Home](#) [About](#) [Plants](#) [Resources](#) [Solutions](#) [Join](#)

Cal-IPC works to stop the spread of invasive plants across California...



Cal-IPC Project

SF Bay Sea Lavender Control



Cal-IPC Project

Desert Knapweed Containment



Cal-IPC Project

Northcoast Knotweed Eradication



Member-driver since 1992.