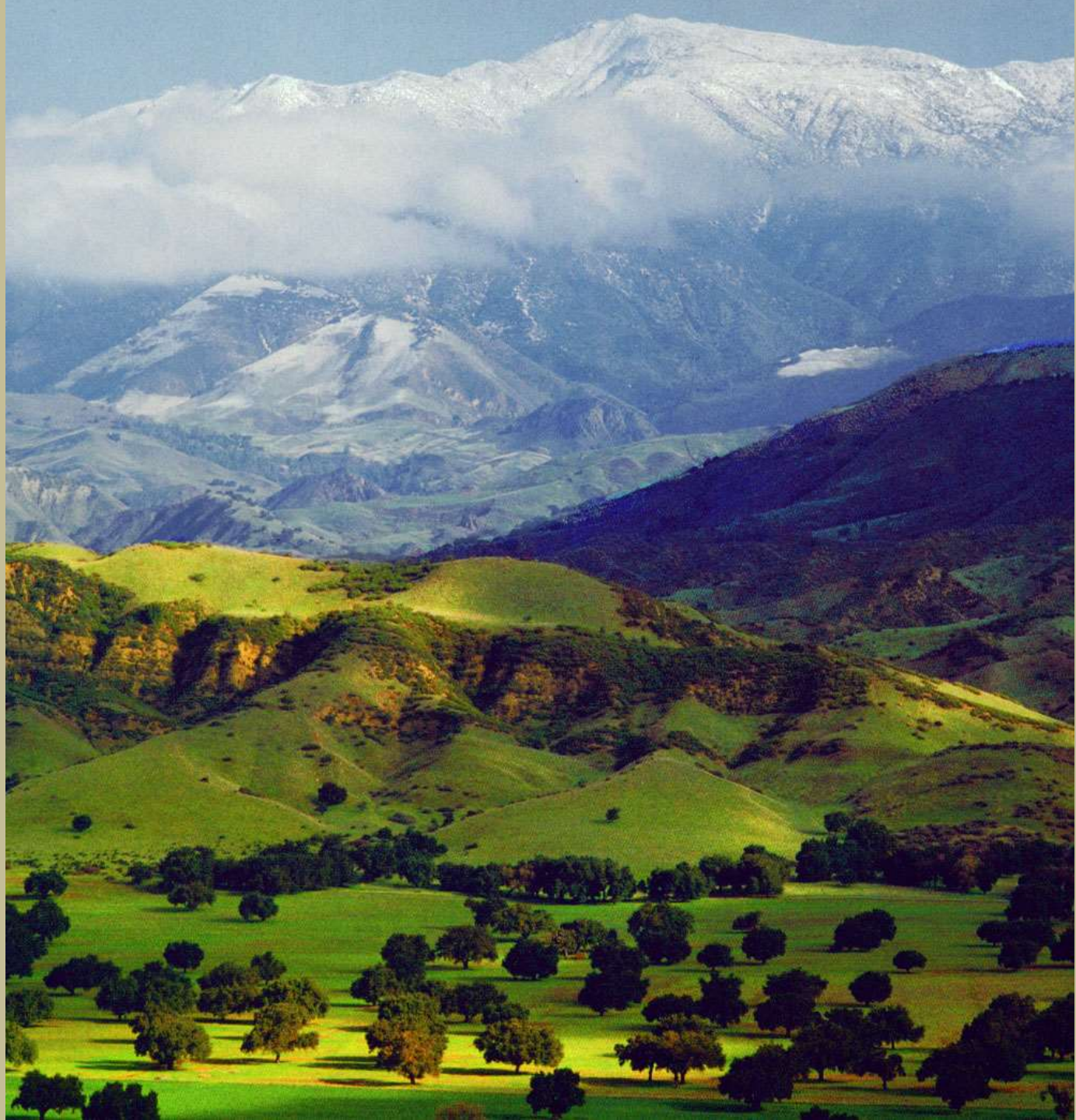


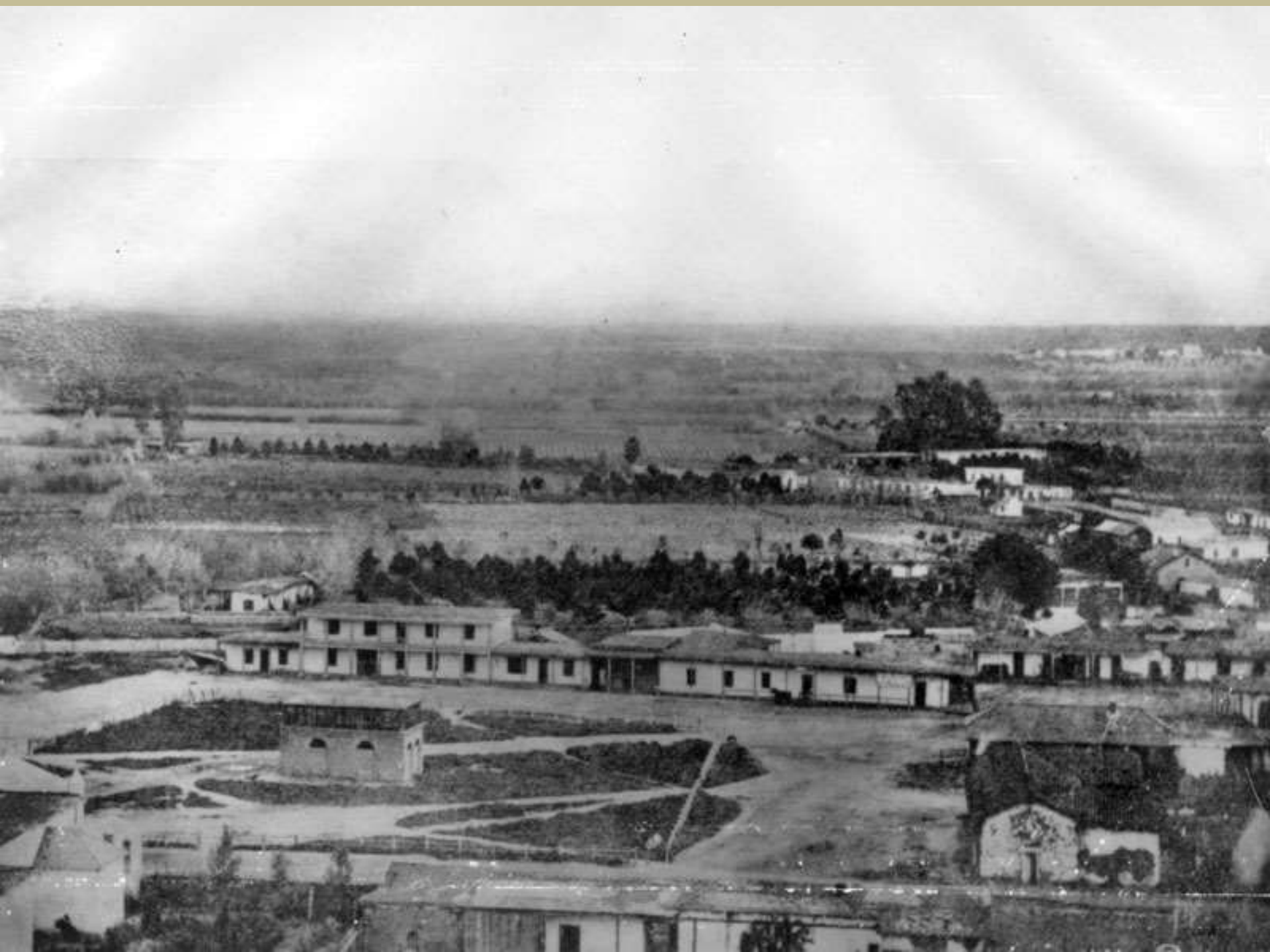
A photograph of a peacock standing in a garden. The peacock is facing away from the camera, showing its long tail feathers with prominent blue and green 'eyes'. Its neck is a vibrant blue. The background is filled with lush green plants and a large tree with bright pink blossoms. The scene is set in a well-maintained garden with a green lawn visible in the distance.

Re-introducing Introduction





K









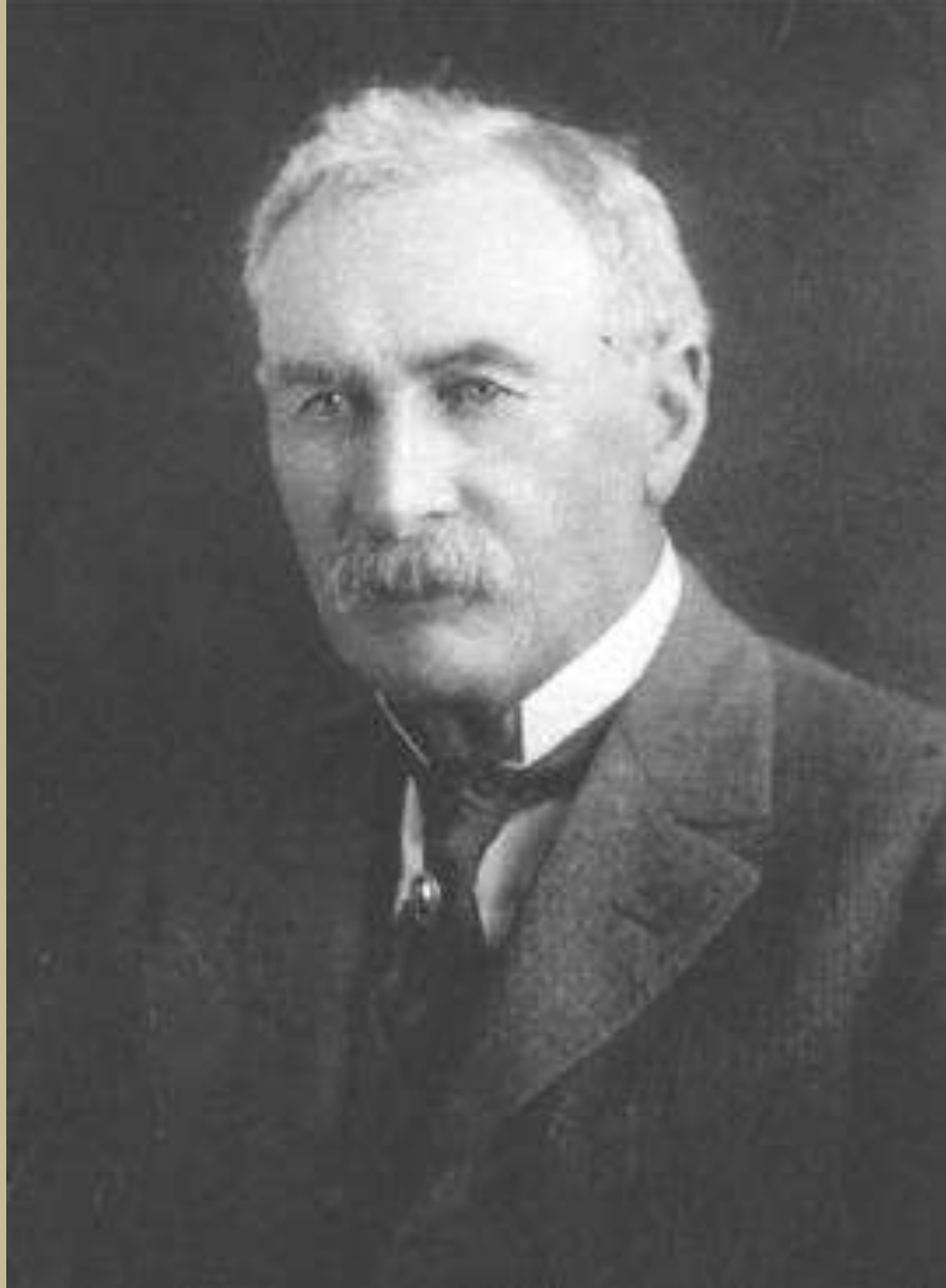






























Koelreuteria elegans
Flamegold
Sapberry family
Taiwan, Fiji Islands





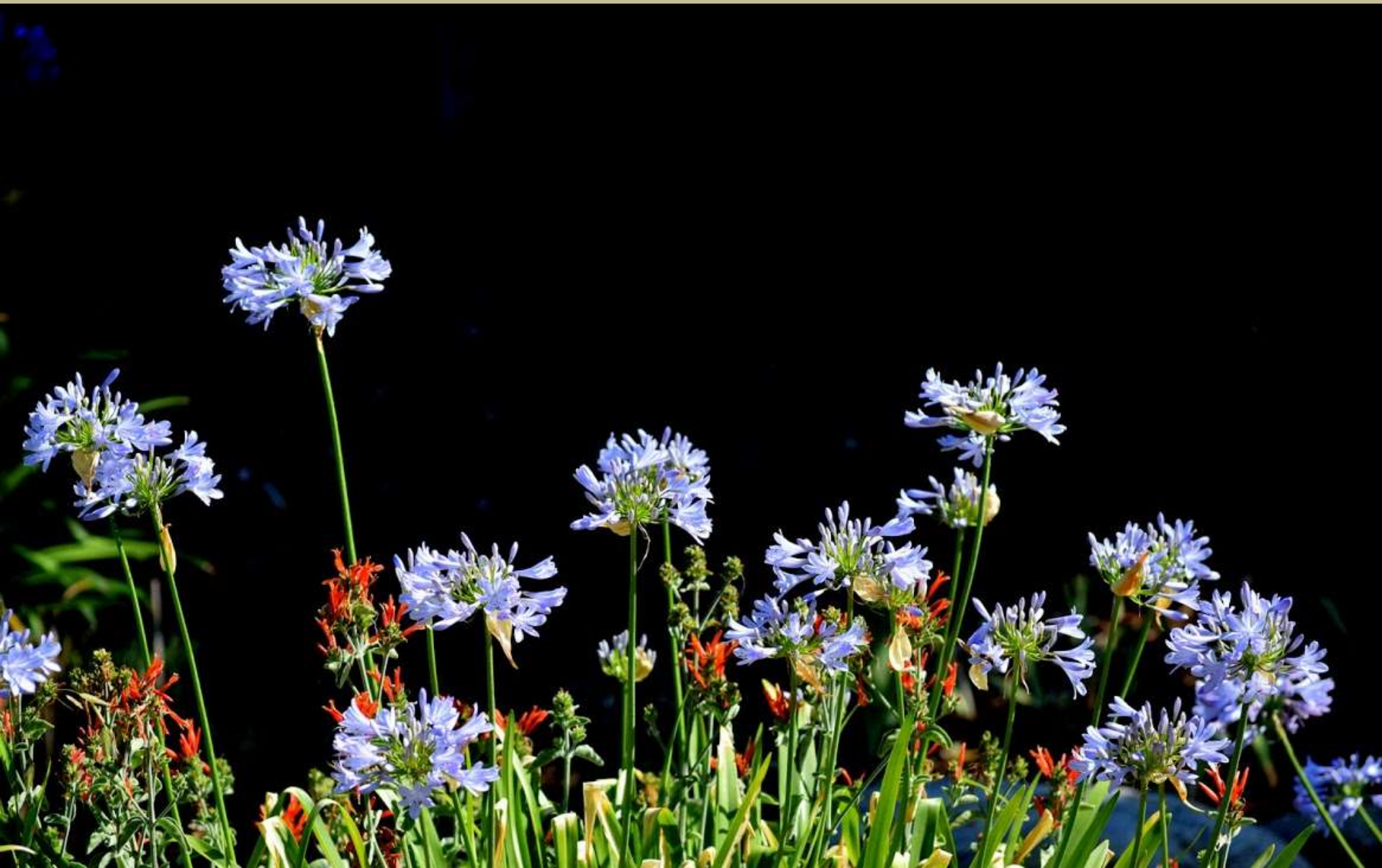


White and purple South African Trailing Daisies (*Osteospermum fruticosum*), and yellow Cape Weed (*Arctotheca calendula*) at Baldwin Avenue and Interstate 210 in Arcadia.

























Created on: Wednesday, Mar 8th, 2017

Evaluation Summary

Summary:

General Evaluation Information

Date of Evaluation: March 8, 2017
Evaluation Time (hrs): Not Recorded
Evaluation Status: Submitted

Plant Information

Plant: [Quercus polymorpha](#)

If the plant is a cultivar, and if the cultivar's behavior differs from its parent's (behavior), explain how:

Regional Information

Region Name: [Southern California](#)



Image by Mountain States Wholesale Nursery (c)

Plant: [Quercus polymorpha](#)

PRE Evaluation Summary

Region: Southern California

PRE Score: 2 ✓

Questions Answered: 18

This evaluation is [valid](#) ✓

Screener's Confidence: 64.4 %

Status: Submitted

Issues (unresolved/total): 0/0

🔒 **PRIVATE** by The Los Angeles County
Arboretum & Botanic Garden

Actions

[Add Evaluation Issue](#) ➔

PRE Score Legend

The PRE Score is calculated by adding the point totals for each (answered) question.



Cistus salviifolius L. -- Southern California Coast Section Southern California Mountains and Valleys Section

[Evaluation](#)[Edit](#)[Issues](#)Created by: [Mina Emamy](#)

Created on: Tuesday, Jun 27th, 2017

Evaluation Summary

"Cistus salviifolius 'Prostratus' (Sageleaf Rockrose) - A low spreading evergreen shrub growing about 2 feet tall by 6 to 8 feet wide. Gray-green foliage looks wrinkled like a sageleaf. In spring appear the 1 1/2" wide white flowers with orange yellow stamens in the center and a yellow spot at the base of each petal. Plant in full sun in a well-drained soil and irrigate occasionally to very little. Cold hardy to about 18 degrees F. This is a great drought tolerant plant for securing sloped areas or other difficult areas. Its low ground-hugging nature makes it a good candidate for areas where a low fuel fire resistant plant is needed in the landscape. Cistus salviifolius is widespread through the Mediterranean Sea basin both throughout southern Europe east to Turkey and North Africa in Algeria, Libya, Morocco and Tunisia. The name Cistus is from the Greek word "kistos" which was the name originally used to describe the plant in ancient Greece. The specific epithet "salviifolius" means foliage like a sage. This plant is sometimes erroneously listed as Cistus villosus prostratus, a name of no botanical standing. Cistus villosus and Cistus incanus are synonyms of Cistus creticus. This description is based on research and observations of this plant as it grows in our nursery, in our nursery garden and in other gardens that we visit. We also incorporate comments received and appreciate getting feedback of any kind from those who have any additional information about this plant, particularly if they disagree with what we have written or if they have additional cultural tips that would aid others in growing Cistus salviifolius 'Prostratus'." (smgrowers.com)

Image by [Alvesgaspar](#)Plant: [Cistus salviifolius L.](#)

PRE Evaluation Summary

Region: Southern California Coast
Section Southern California Mountains
and Valleys Section

PRE Score: 16 ✖

Questions Answered: 18

This evaluation is [valid](#) ✔

Screener's Confidence: 73.333 %

Status: Submitted

Issues (unresolved/total): 0/0

🔒 **PRIVATE** by The Los Angeles County
Arboretum & Botanic Garden



This content is marked PRIVATE by The Los Angeles County Arboretum & Botanic Garden

Calotropis procera -- Southern California Coast Section Southern California Mountains and Valleys Section

Evaluation Edit Issues

Created by: [Mina Emamy](#)

Created on: Tuesday, Jul 4th, 2017

Evaluation Summary

"Calotropis procera a large shrub with waxy stems and leaves that contain a milky sap. Its relatively large greyish-green leaves (5-20 cm long and 4-10 cm wide) are borne in pairs and are stem-clasping. Its flowers (20-30 mm across) have five petals that are white with purplish-coloured tips and a purplish crown-like centre. Its fruit is a large (8-12 cm long) bladderly 'pod' that is greyish-green in colour. This fruit splits open at maturity to release numerous seeds, each topped with a tuft of long, white, silky hairs." (Weeds of Australia)

General Evaluation Information

Plant Evaluated



Image by Wilfredo Rodríguez

Plant: [Calotropis procera](#)

PRE Evaluation Summary

Region: Southern California Coast
Section Southern California Mountains
and Valleys Section

PRE Score: 19 ✖

Questions Answered: 19

This evaluation is [valid](#) ✔

Screener's Confidence: 72.632 %

Status: Submitted

Issues (unresolved/total): 0/0

