



Integrated Regional Conservation and Development Program

Dennis Grossman
Senior Science Advisor
CA Strategic Growth Council

Program Objectives

Efficiently implement priority development projects



Ensure the protection of critical natural resources

IRCAD: Process Overview

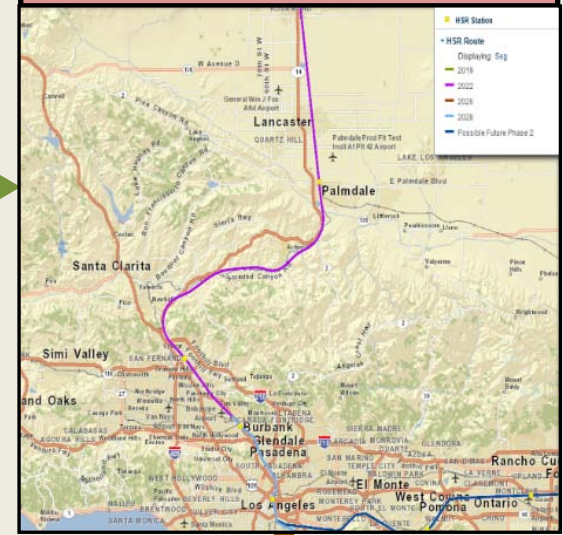
Regional Conservation Assessment



Guide Project Planning to Avoid and Minimize Environmental Impacts

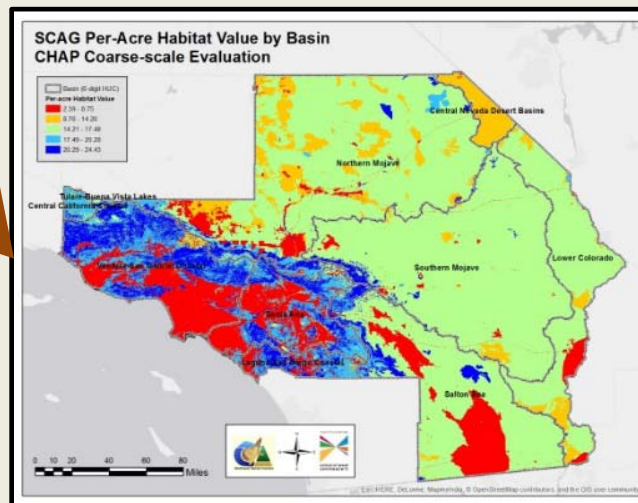
Tools: Siting and Implementation

Regional Development Planning



Guide Project Mitigation to Advance Regional Conservation Goals

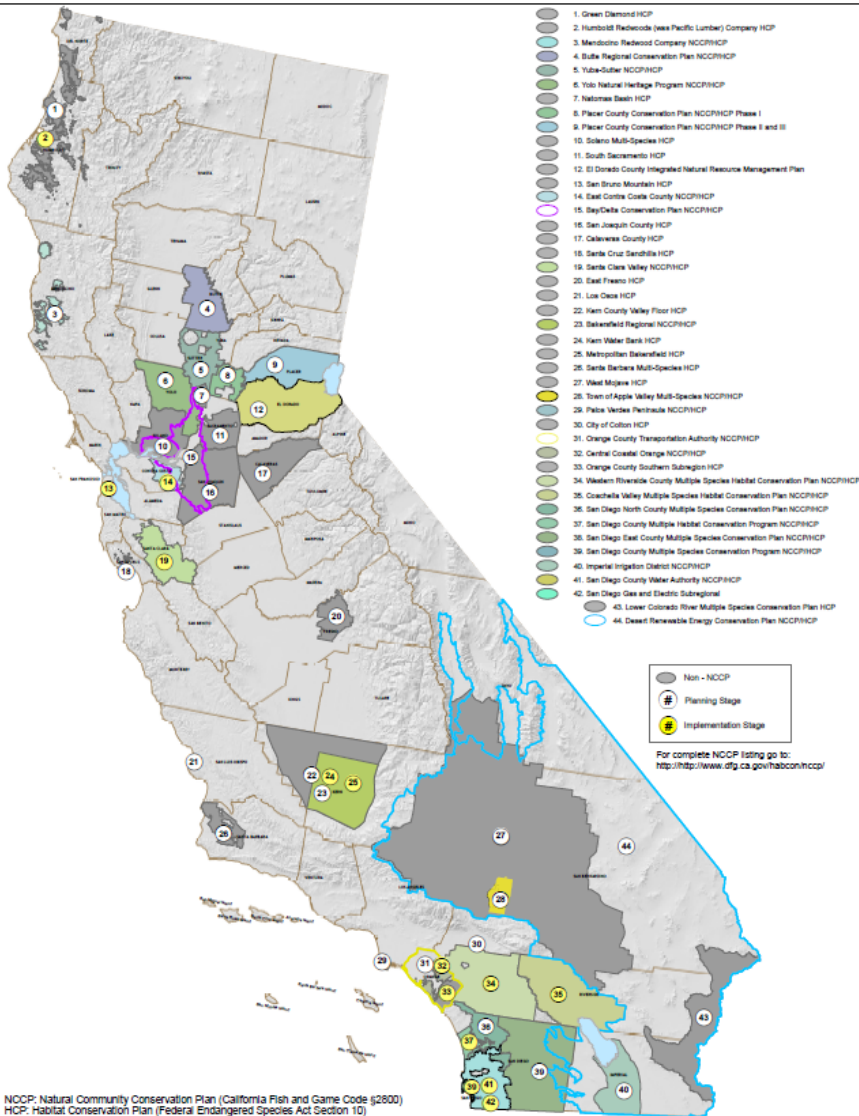
Tools: Stewardship, Acquisition, Restoration



Build on Existing Work

CALIFORNIA REGIONAL CONSERVATION PLANS

March 2014



DRAFT STATEWIDE FRAMEWORK FOR

Regional Advance Mitigation Planning IN CALIFORNIA

Prepared for:

California Department of Water Resources

In Consultation with:

California Department of Transportation

Prepared by:

Regional Advance Mitigation Planning Work Group

Technical Assistance Provided by:

AECOM

April 2012

NCCP: Natural Community Conservation Plan (California Fish and Game Code §2800)
 HCP: Habitat Conservation Plan (Federal Endangered Species Act Section 10)



Conservation plans are in various stages of review, and subject to change. In some cases, boundaries have not been submitted by participants, and are estimated locations.
 Data Sources: Biological Resources California Department of Forestry and Fire Protection (CALFIRE), Conservation Planning Area California Department of Fish and Wildlife, U.S. Fish and Wildlife Service, Bureau of Land Management, California Department of Parks and Recreation, National Wetlands Inventory, San Diego Association of Governments, and Colorado Valley Association of Governments.
 Prepared by: Steve Kline, with assistance from: AECOM, 15001 E. Harvard Ave., Suite 100, Denver, CO 80231

Political Support

Resolution by CA Strategic Growth Council

- **Office of Planning and Research**
- **CA Health and Human Services Agency**
- **CA Natural Resources Agency**
- **CA State Transportation Agency**
- **CA Business, Consumer Services, and Housing Agency**
- **CA Environmental Protection Agency**
- **CA Department of Food and Agriculture**

Resolution by CA Biodiversity Council

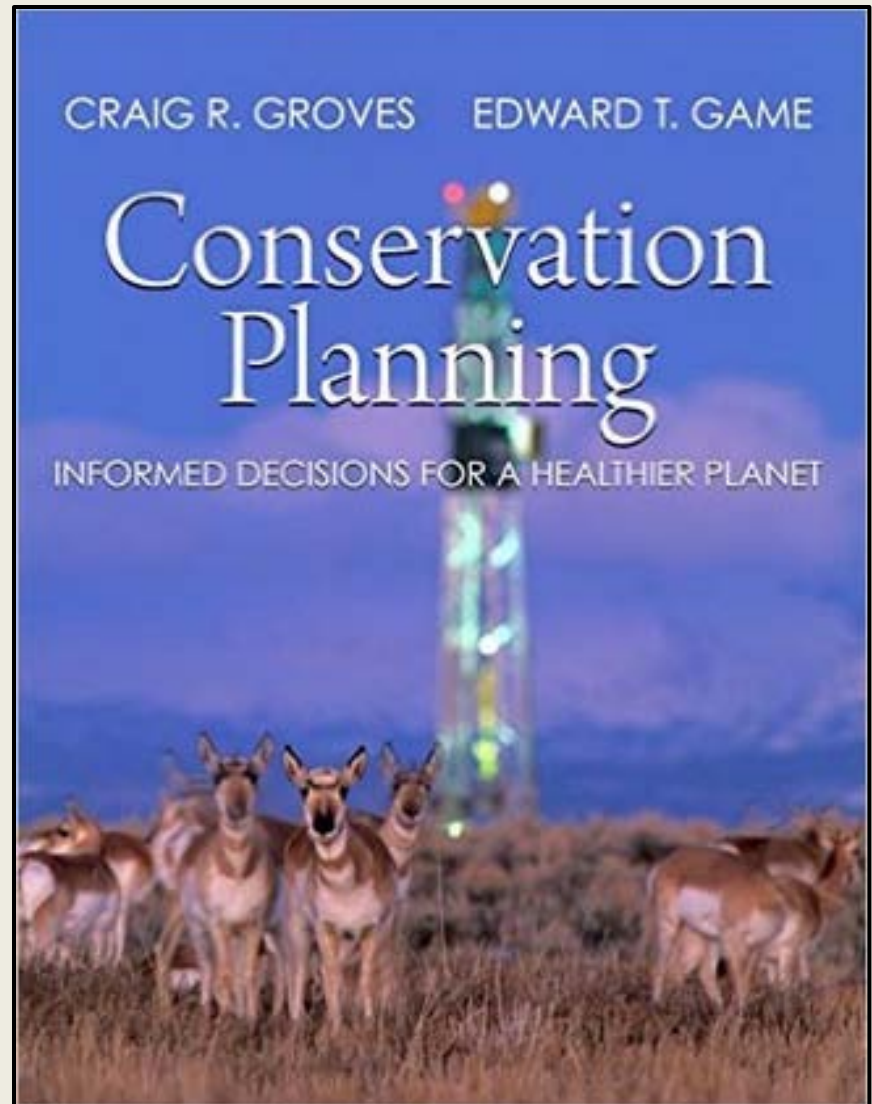
- **20 state agencies**
- **12 federal agencies**
- **10 local governments**

Regional Conservation Assessment Methodology

An IRCAD Methods Work Group meets bi-monthly.

Agencies and Organizations

- CBC
- CA DFA
- CA DFW
- CA DWR
- CA DOC
- CA SGC
- Caltrans
- CEC
- TNC
- UC-Davis
- USFWS



State Conservation Assessment - WA



WASHINGTON DEPARTMENT OF FISH & WILDLIFE

PHS on the Web



Layers Tools

Base Maps

Aerial

Hybrid

Boundaries

Parcel

Street

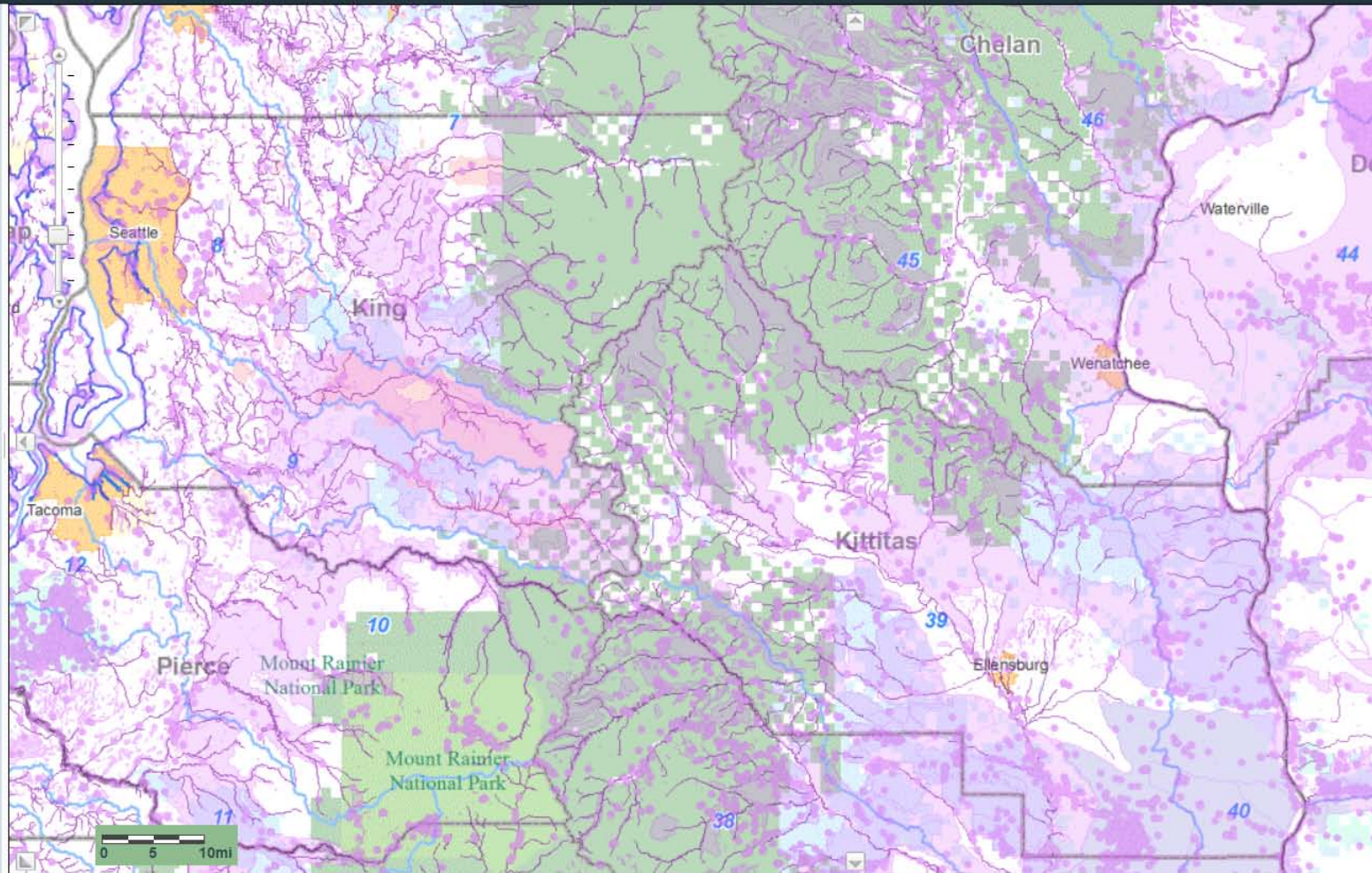
Topography

Toggle PHS

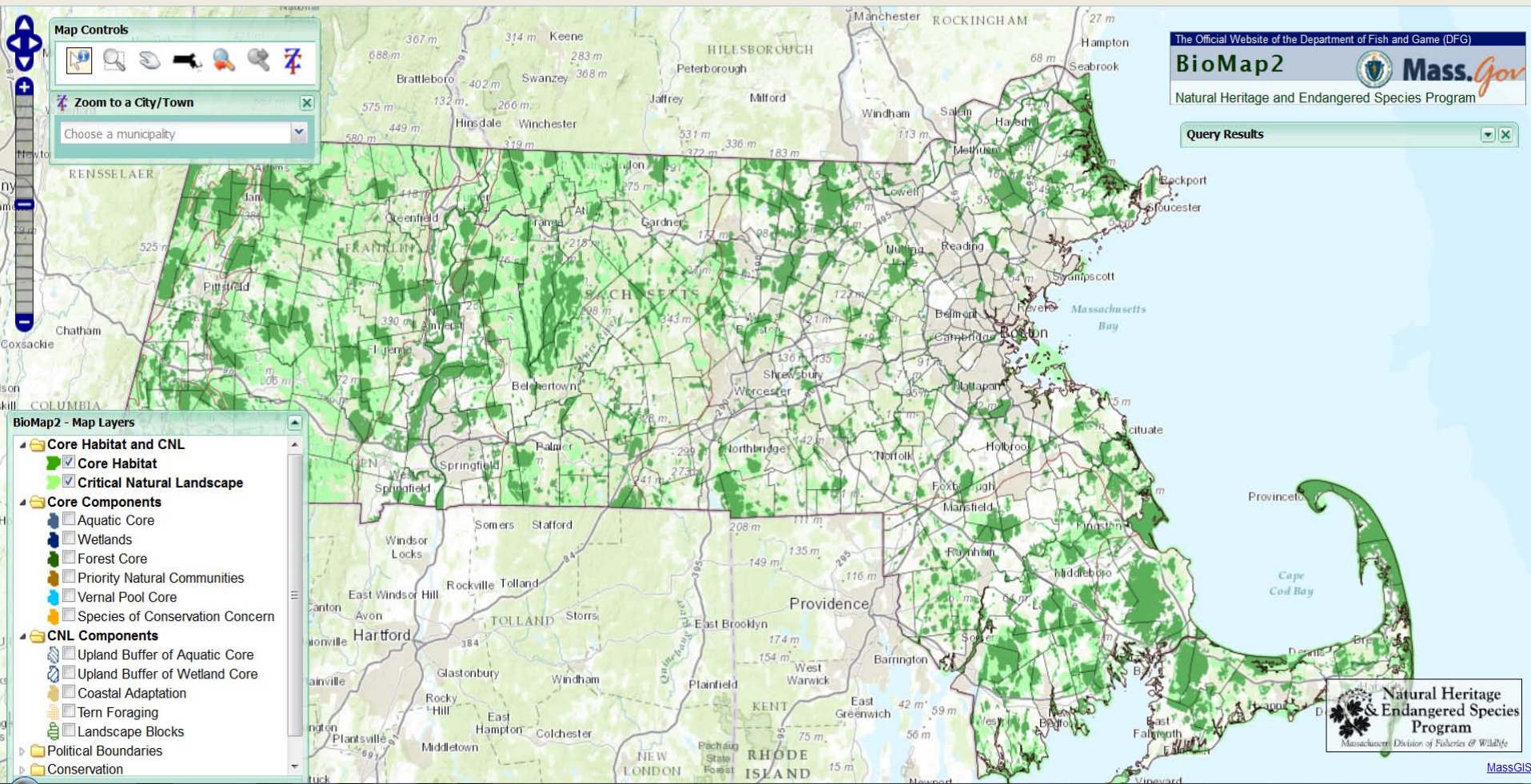
Turn PHS Data Off

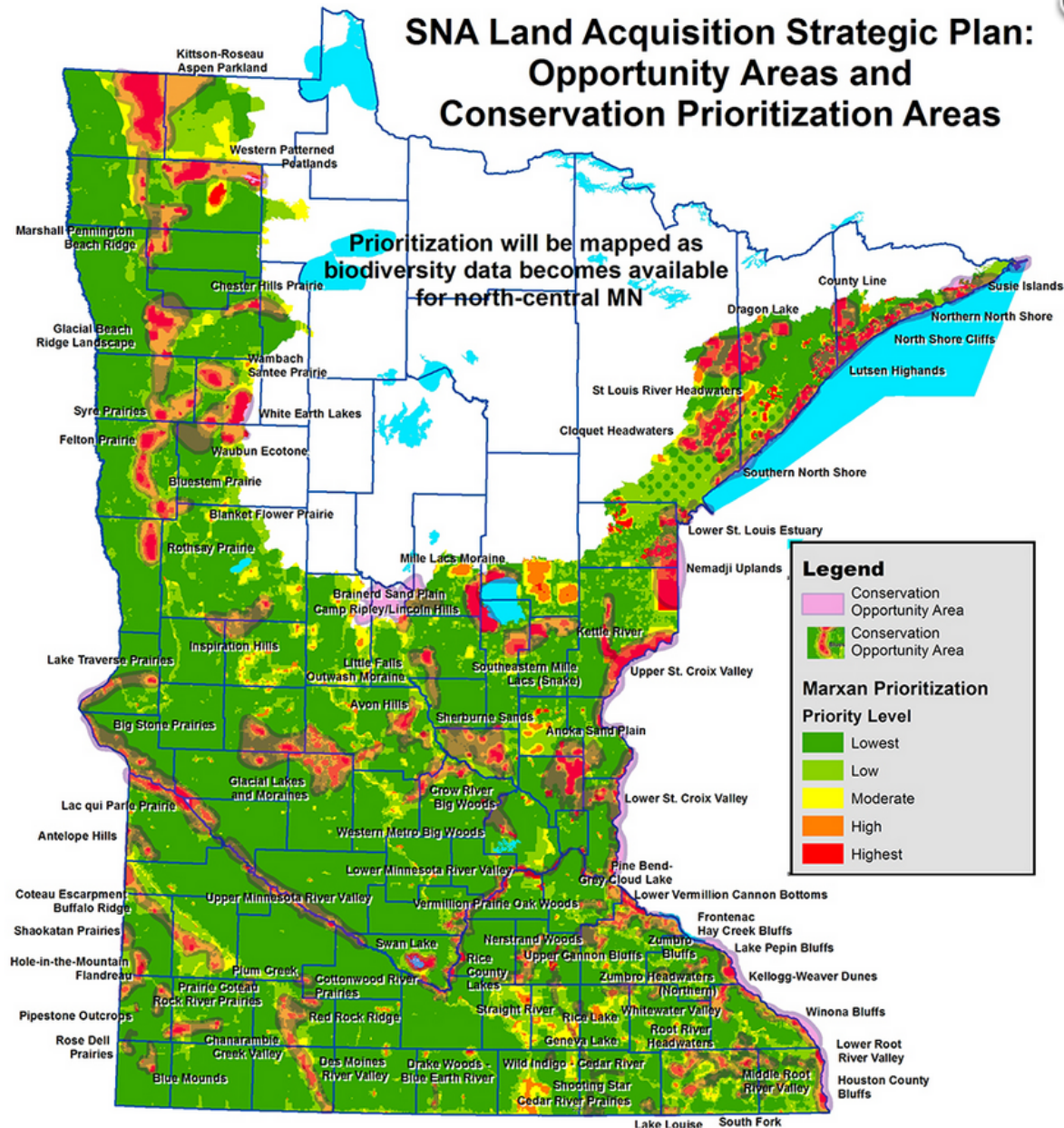
PHS View Source

PHS Plus Public View (▼)

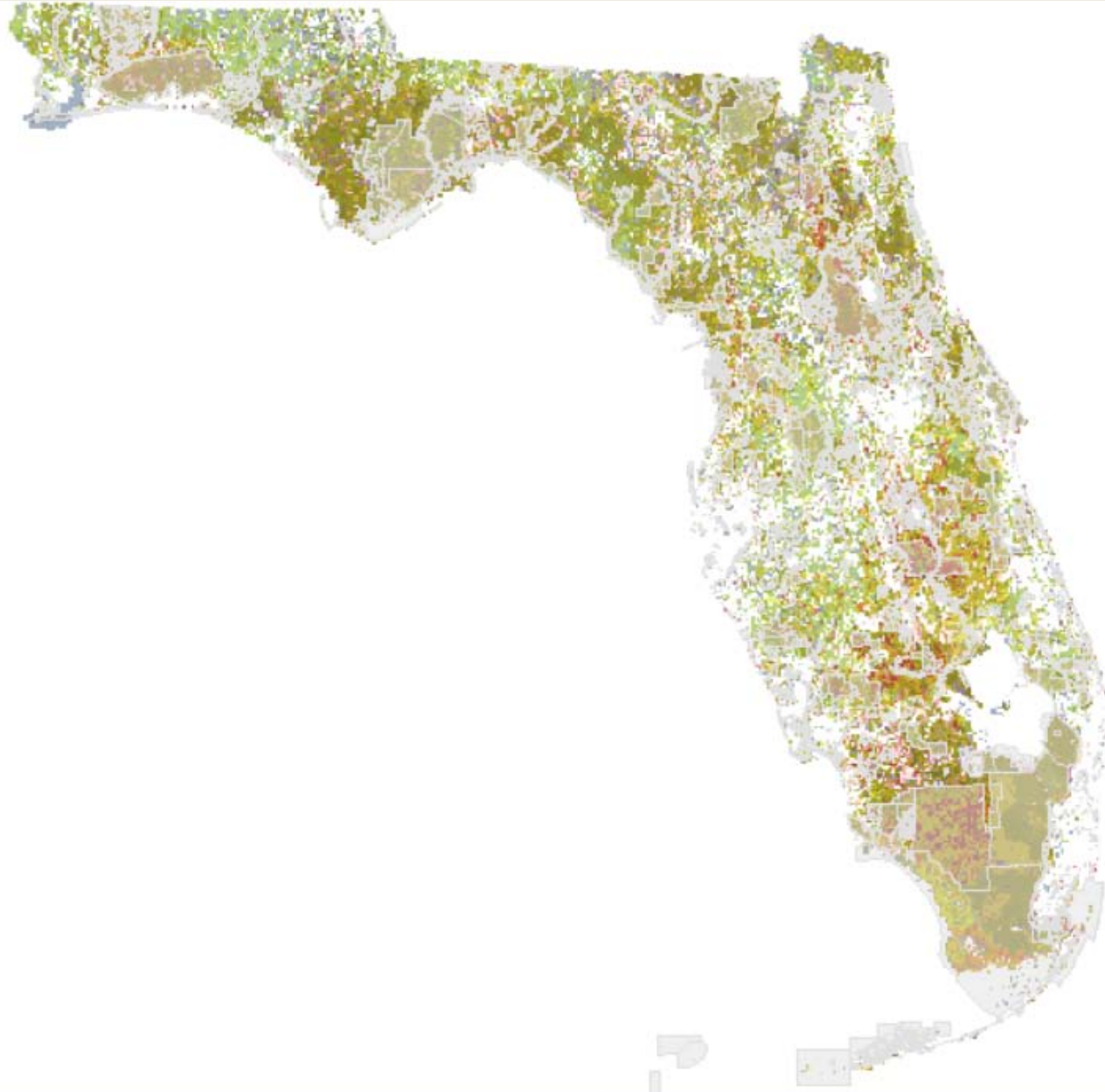


State Conservation Assessment - MA



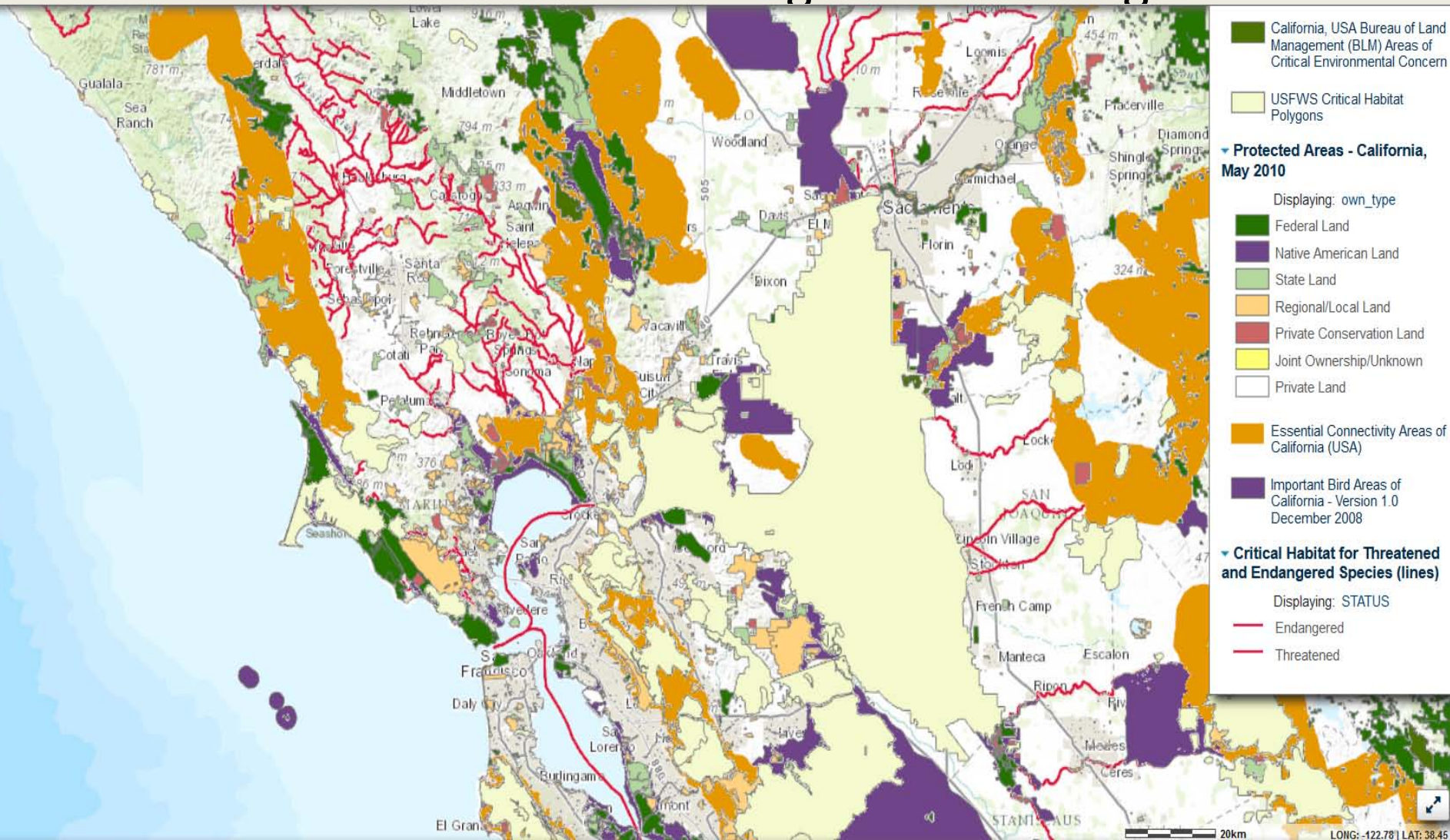


State Conservation Assessment - FL



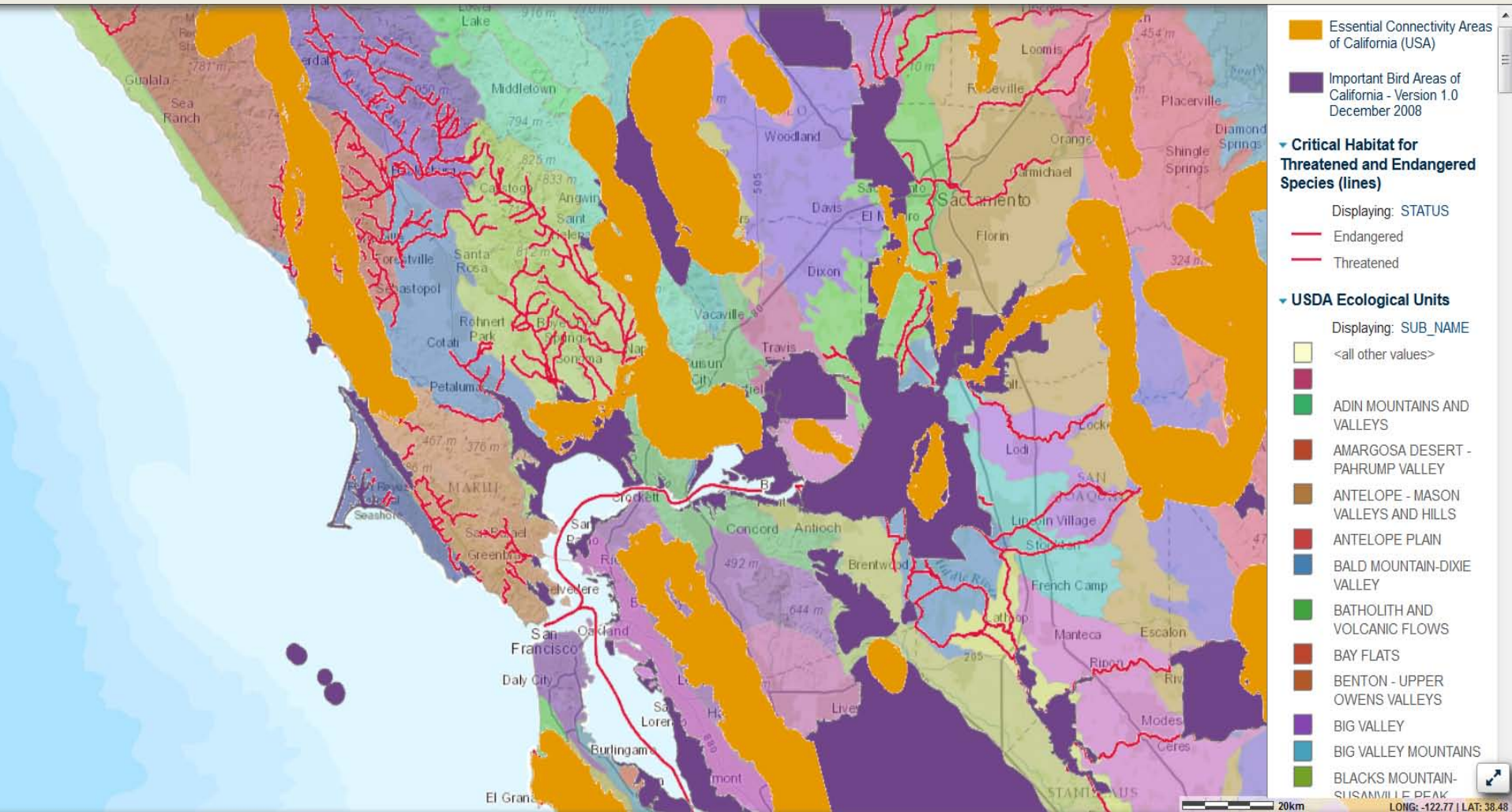
Process

The strategy is implemented through the alignment of conservation activities across agencies and organizations.



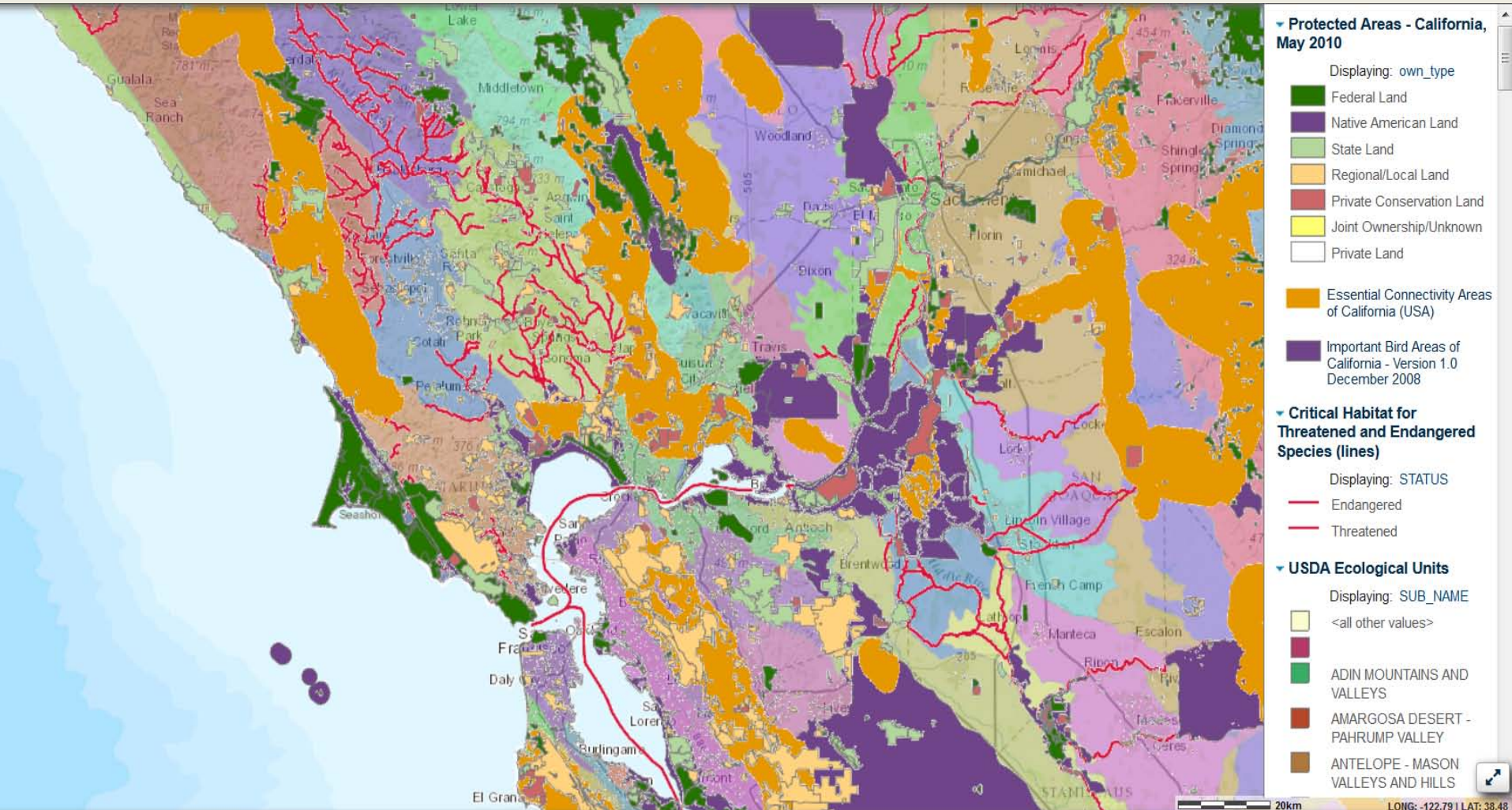
Process

Stakeholders come together to determine conservation priorities and goals for every ecological region.



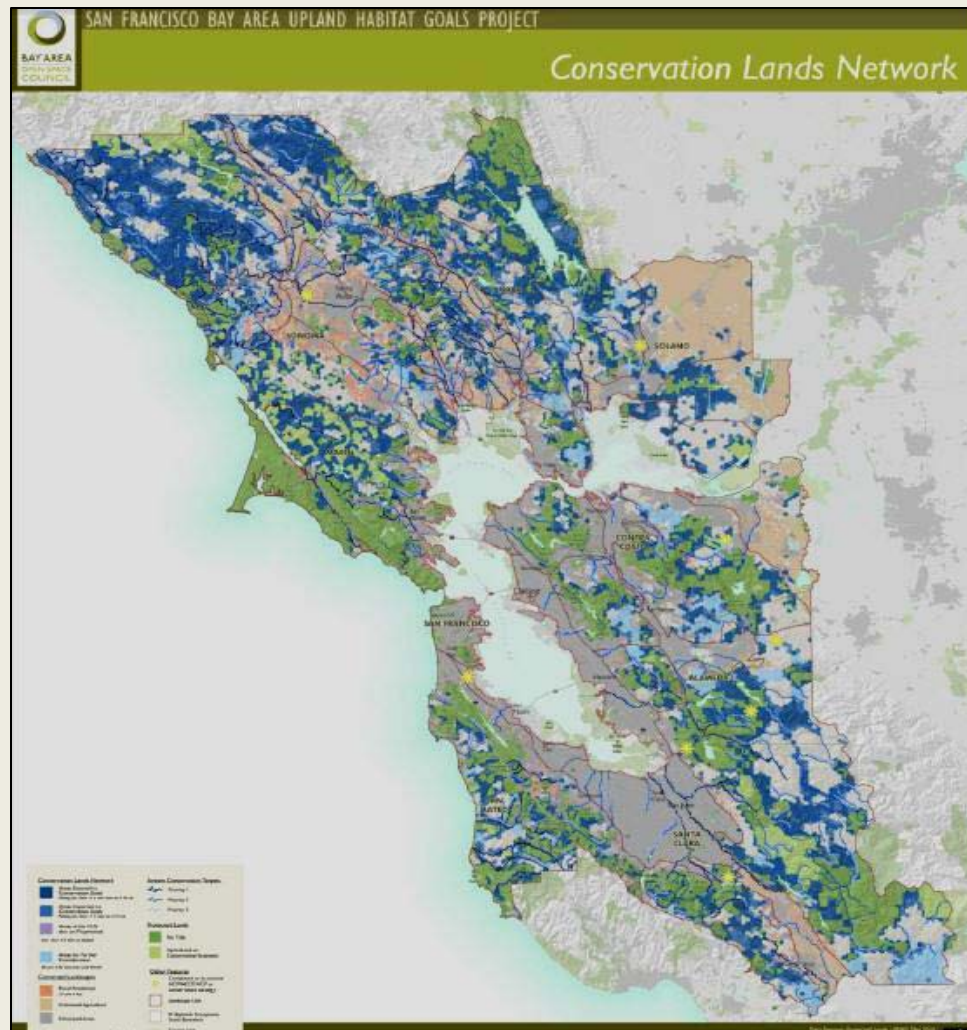
Process

Gap analyses are carried out to assess the status of conservation success for each region.



Process

Strategies are developed to secure the protection of unmet conservation goals, looking at opportunities and threats.



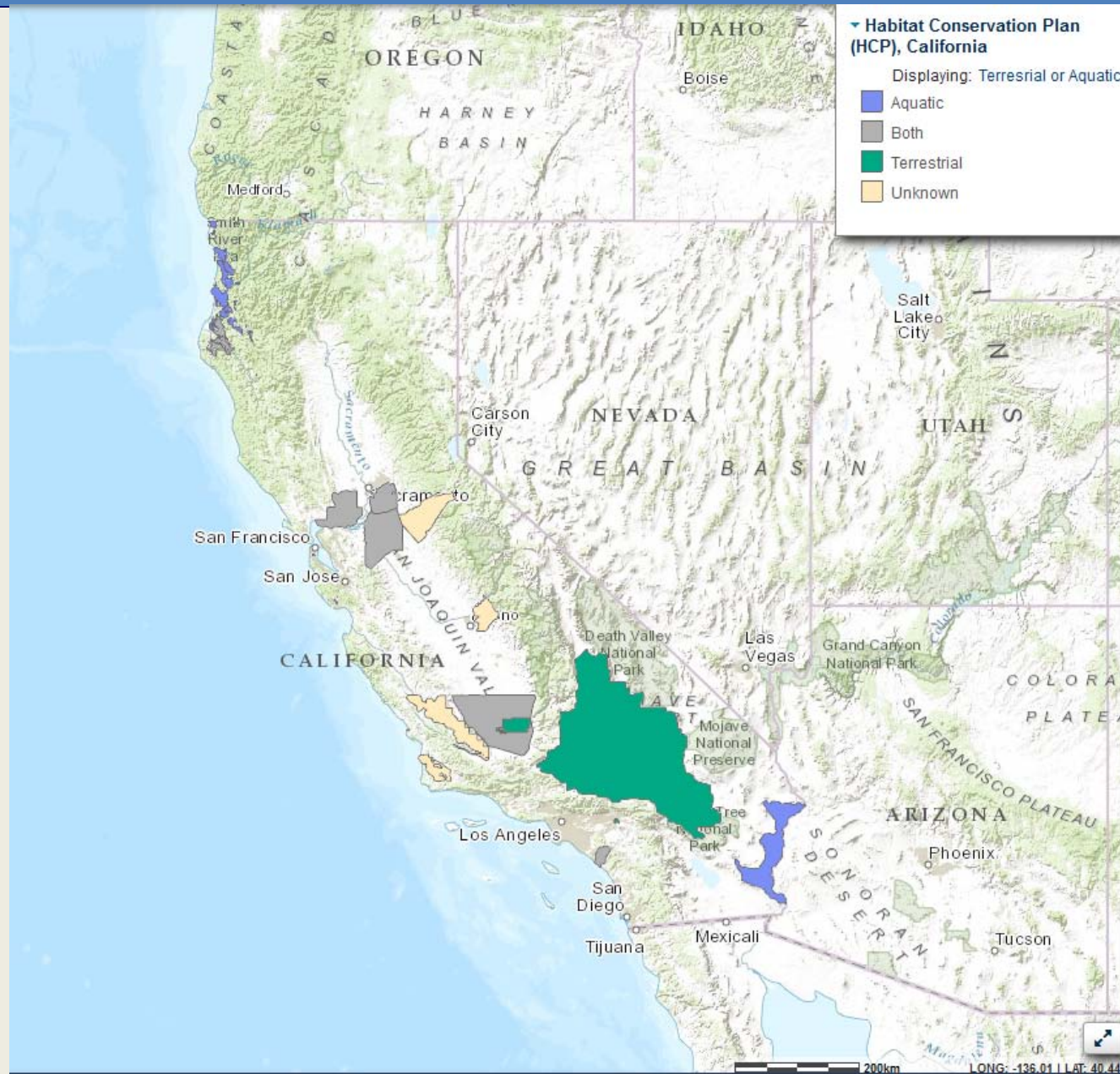
CA Conservation Project Assessment

CALIFORNIA CONSERVATION PROJECTS	
<u>Organization Name</u>	<u>Contact Name</u>
BLM REA projects	Jim Strittholt
Central Coast	Jim Thorne
Coachella Valley HCP	
Department of Fish and Wildlife (Website of other non NCCP Projects)	Jennifer Garrison
Desert Renewable Energy Conservation Plan (DRECP)	Terry Watt / Scott Flint
Diablo Range	TNC
Howard Ranch	TNC
Irvine Ranch Conservancy Conservation Plan	
LA County County (General Plan?)	Randy Jackson
Measure A - Riverside County Transportation Commission	Charlie Landry
Measure R - LA County	Belinda Faustinos
Monterey County	Jim Thorne
National Community Conservation Plans (all)	Monica Parisi
North Coast Multi-County Collaboration	Cybelle Immitt
North Coast Resource Partnership	Katherine Gledhill and Karen Gaffney
North Coast Watershed Assessment Program	Kevin Hunting (get more info)
Orange County Transportation Authority Mitigation Program	Melanie Schlotterbeck
Placer County Conservation Plan	Jennifer Byous
Sacramento River RAMP Pilot Project	Stuart Kirkham
San Bernardino County General Plan	Josh Lee
San Bonito County HCP	mentioned by Terry
San Diego HCP	
San Diego Monitoring and Management Program	Keith Greer
San Joaquin Energy Assessment	Jim Strittholt
San Joaquin Greenprint	Clark Thompson
San Joaquin HCP	???
Santa Clara Open Space Authority	Andrea MacKenzie
Santa Clara Valley Regional Greenprint	Matt Freeman
Santa Cruz Regional Blueprint	Matt Freeman (left but may know who to speak with now)
Solano County HCP (Valley Floor)	???
Sonoma County (Regional Climate Protection Authority)	Karen Gaffney, Catherine Gladhill
Sonoma County Agricultural and Preservation Greenprint	Dick Cameron
Sonoma County Carbon Inventory Project	Karen Gaffney
South Sacramento HCP	???
Southern California Association of Governments (SCAG)	Kristen Paulings
Tejon Ranch	Mike White / Terry Watt
Tejon Ranch HCP	???
The Nature Conservancy Priority Conservation Areas	Dick Cameron
Vernal Pools Recovery Plans	USFWS ??

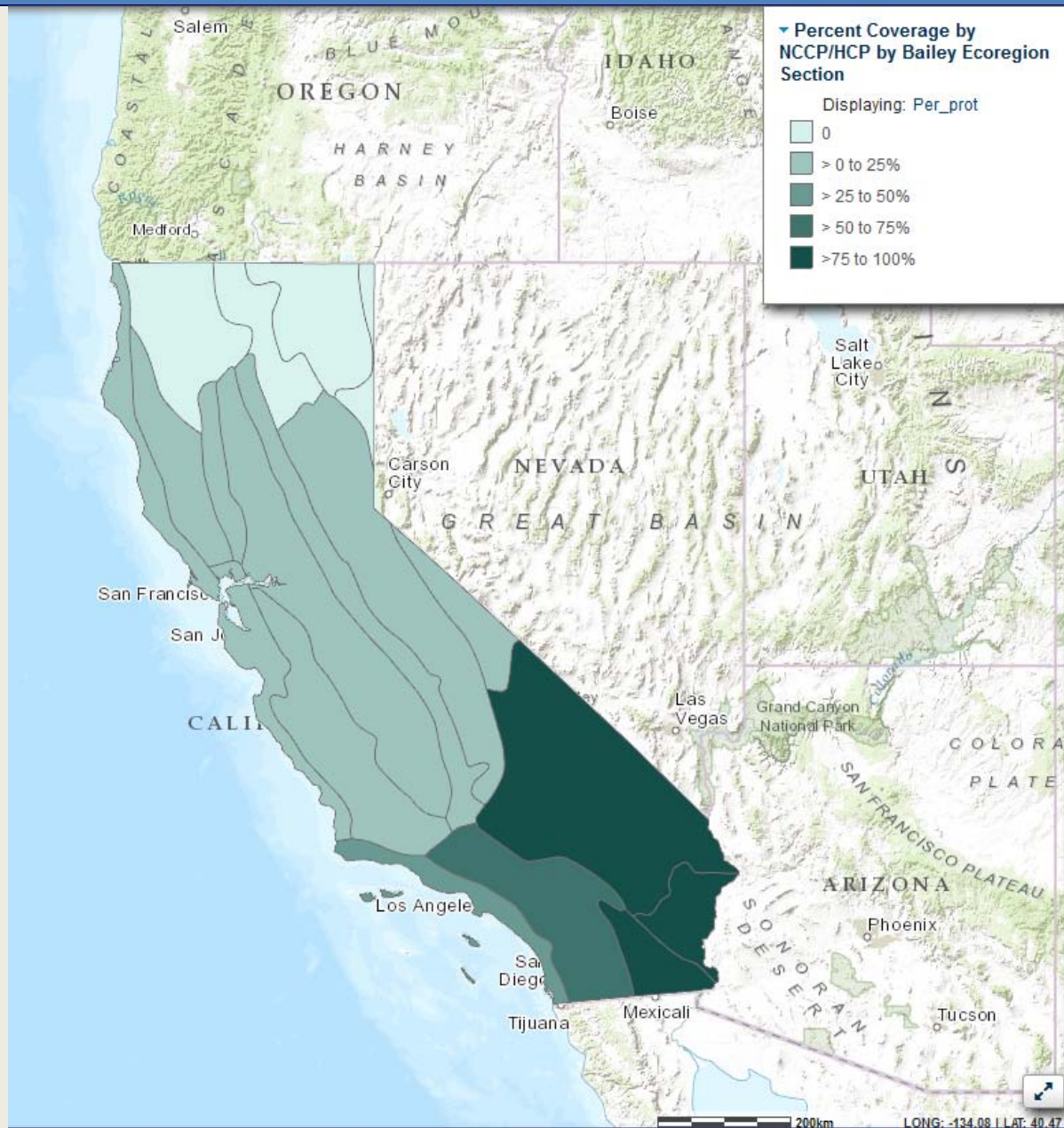
CA Conservation Project Assessment



CA Conservation Project Assessment



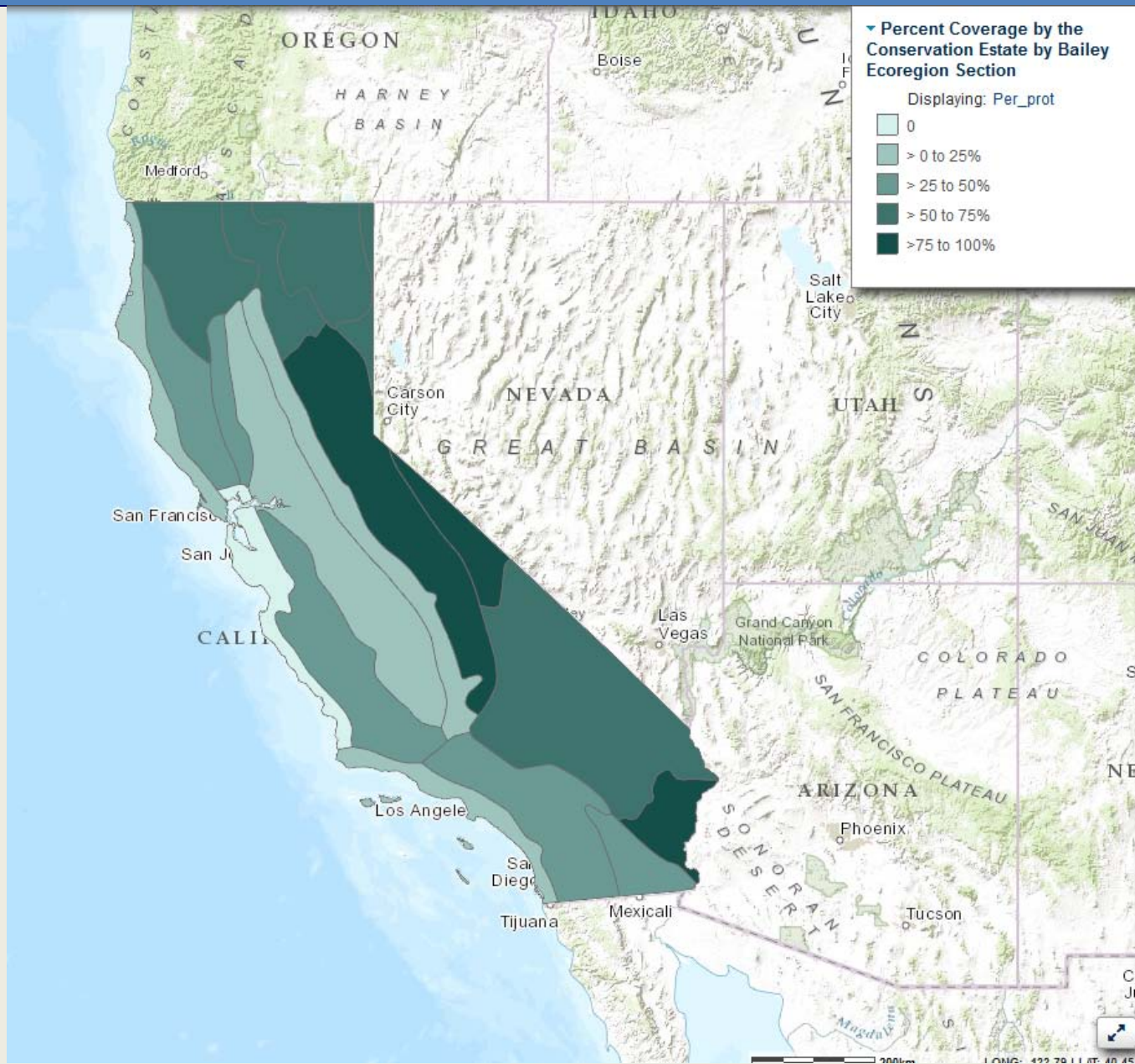
CA Conservation Project Assessment



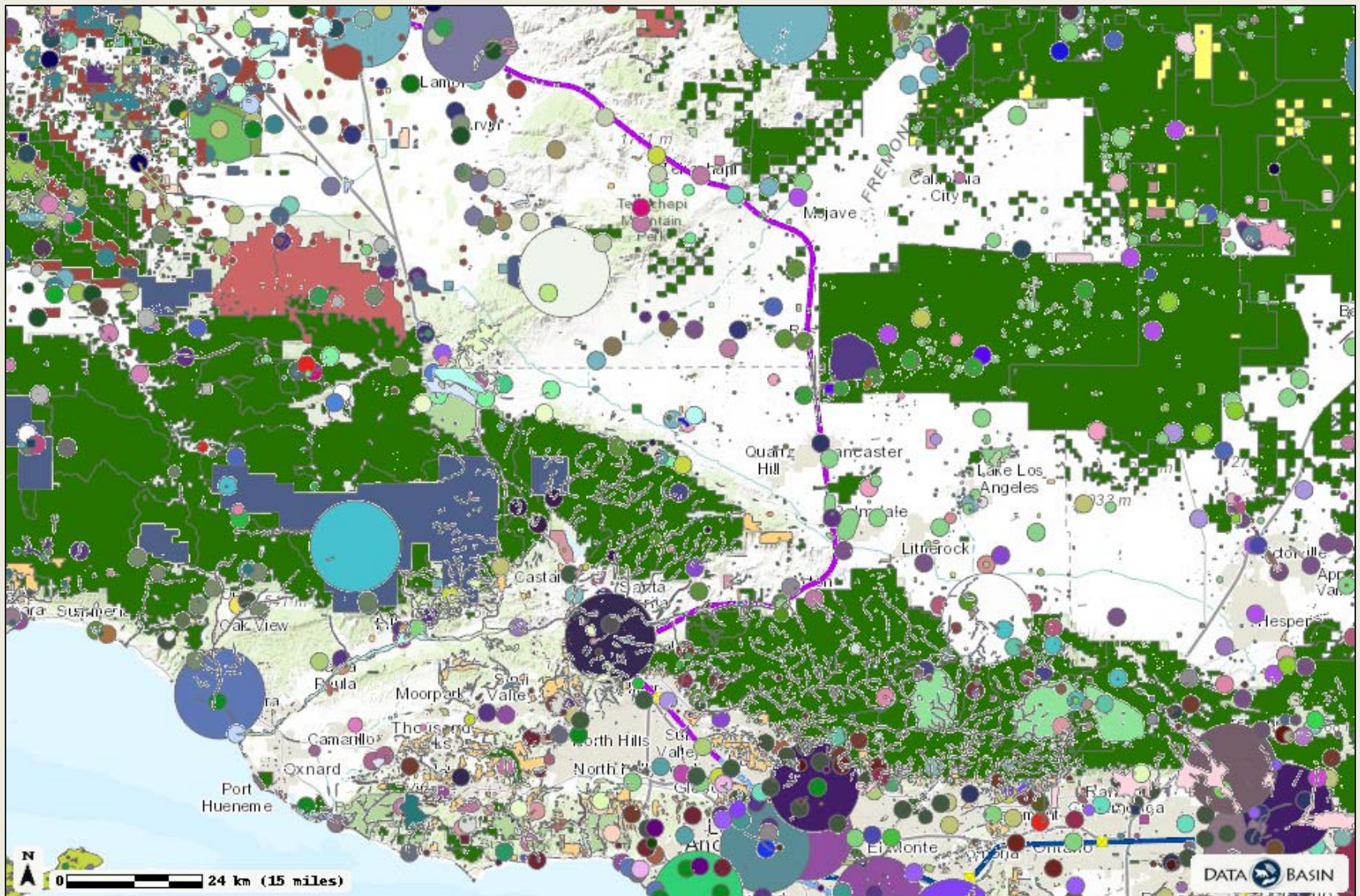
CA Conservation Project Assessment



CA Conservation Project Assessment



California Regional Assessments ??



Demonstration Projects

Regional Scale Approach

- Biological Assessment
- Biological Opinion
- Mitigation Strategy

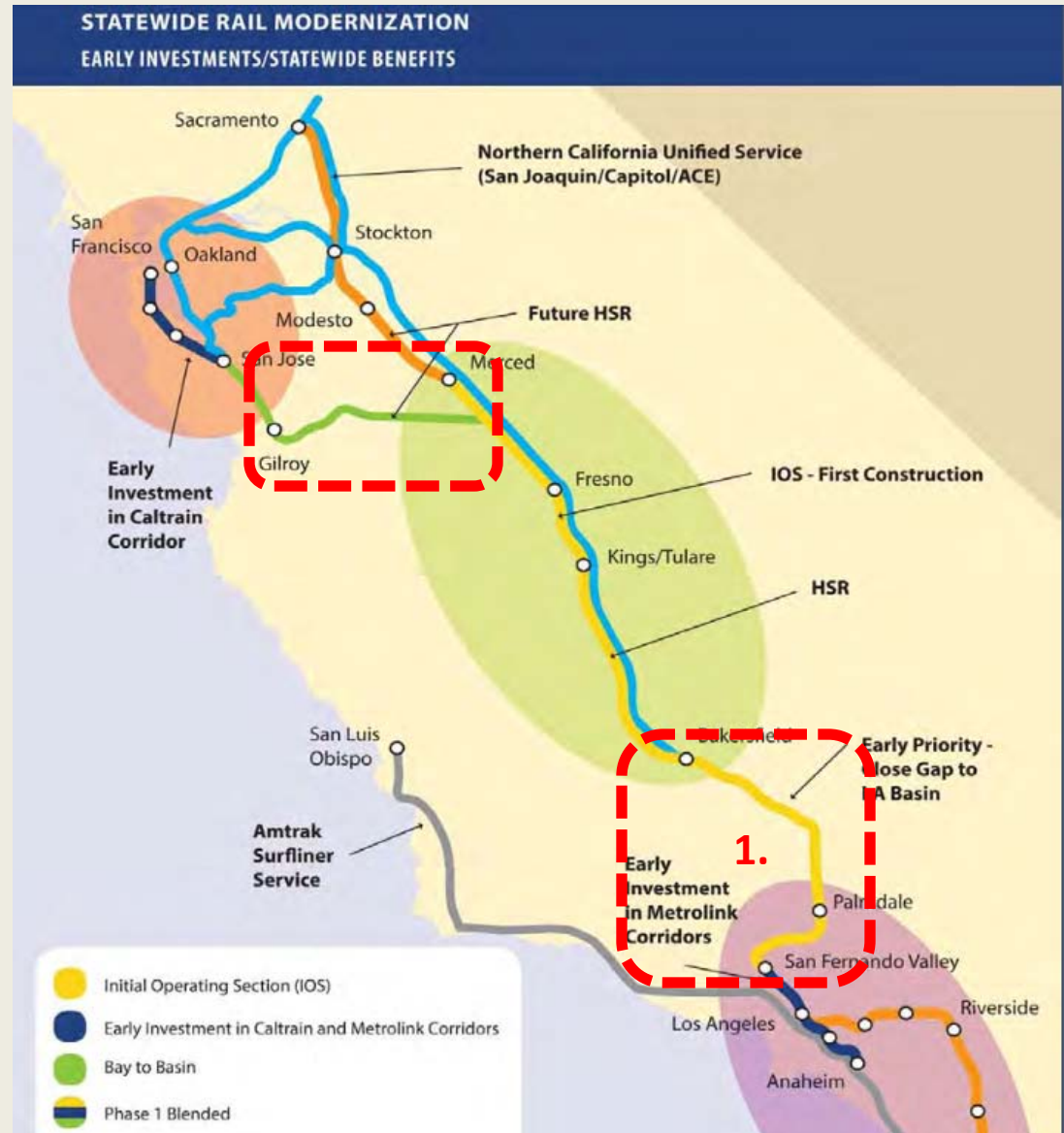
Agency Involvement

- HSR
- Caltrans
- CEC
- USFWS
- CDFW
- USFS
- ACE
- USEPA

Collaborative Process

Regulatory Agencies

Environmental Community



Demonstration Projects - Others

- San Joaquin Valley Greenprint Project
- Bay Area Open Space Authority
- Sierra Nevada: National Forest Planning and Watershed Improvement Program

Technology and Data Support



Search by keyword or location 

Get Started

Explore

Create

Community

My Workspace

DATA BASIN | GROUPS | STRATEGIC GROWTH COUNCIL - INTEGRATED REGIONAL PLANNING | GROUP CONTENT



Strategic Growth Council - Integrated Regional Planning

Created by Dennis Grossman PhD Aug 29, 2014

Home



Content

Members

Public Profile

Message All Members

Manage... 


Sort by: Default  Display:   



 Dataset

California High Speed Rail



 Gallery

DRECP Connectivity



 Gallery

DRECP Covered Species



 Dataset

Olive-sided flycatcher observations in North and South America



 Dataset

Willow Flycatcher observations




 Dataset

Golden winged warbler observations



 Dataset

Construction Minerals Operations



 Dataset

Marine Protected Areas (MPA) Inventory Database, March 2010



 Dataset

Other Congressionally Designated Area - USA, October 2012



 Dataset

Forested Areas in the Western United States



 Gallery

National insect and disease risk Map (NIDRM)



 Dataset

Nonferrous Metal Mines




 Dataset

Vine maple (*Acer circinatum*) extent, North America



 Dataset


Salmon Evolutionarily Significant Units (ESUs) - West Coast of USA



 Dataset

Range Map of Joshua Tree (*Yucca brevifolia*)



 Dataset

NCCP Management Units



 Gallery

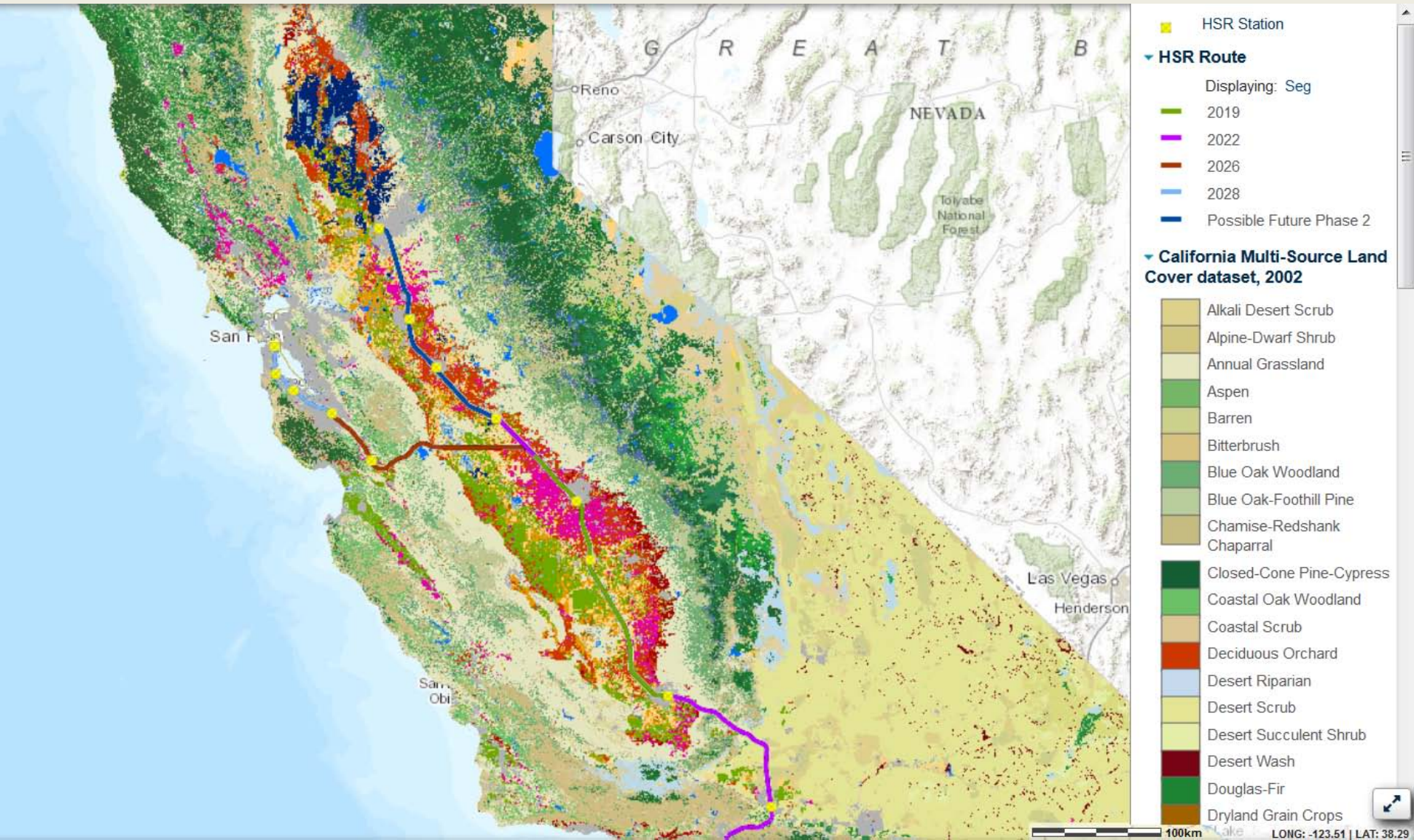
Western Native Fish



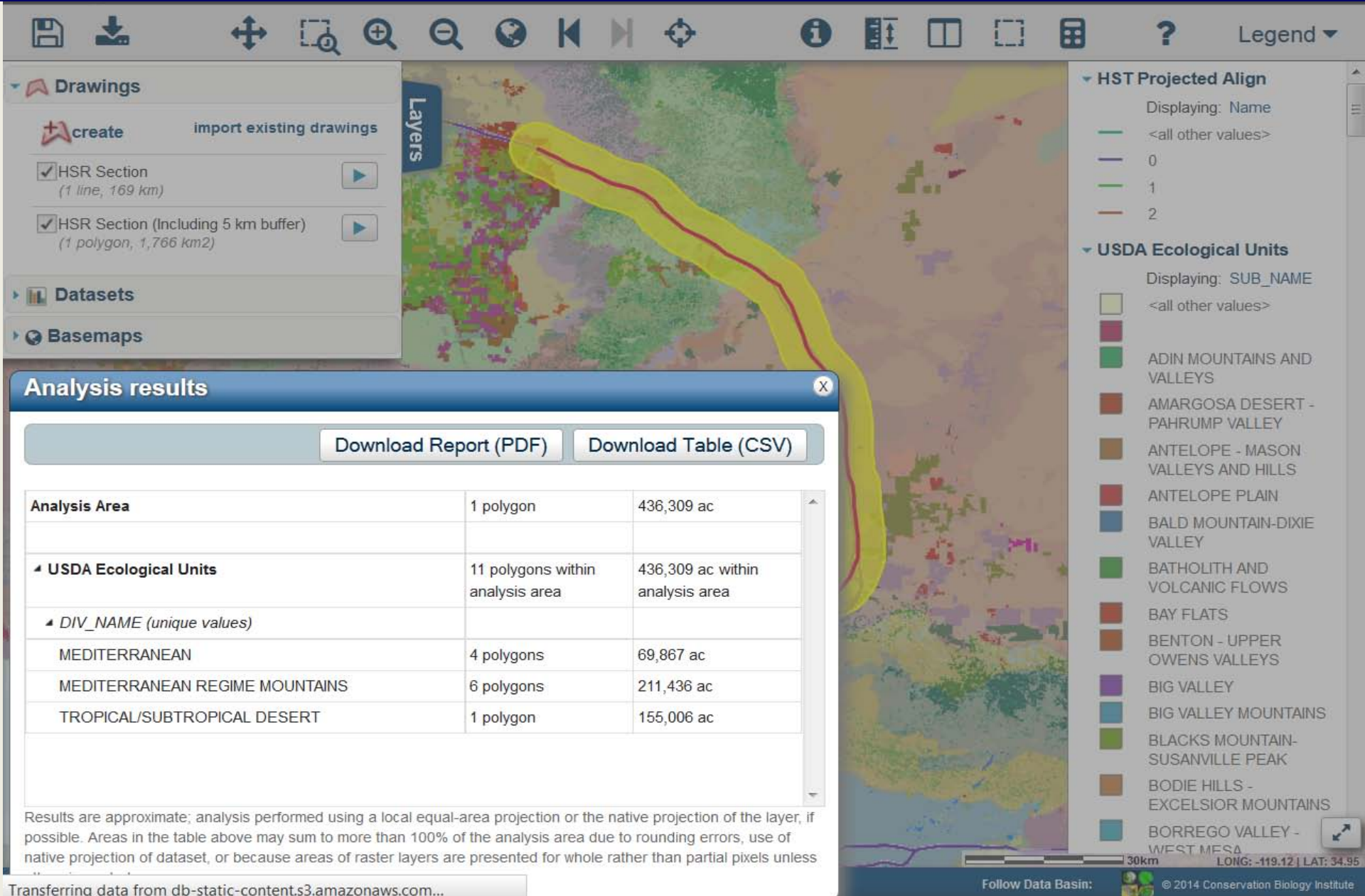
 Dataset

Siskiyou National Forest, USA - Land Resource Management Planning Areas

Technology and Data Support



Technology and Data Support



Summary: What's New with IRCAD

- Timing:
 - Conservation Planning is completed independently to guide the development process.
- Scale:
 - Conservation Assessments are completed across an ecological region, which provides context for all planning within that region.
- Strategy:
 - Can include multiple targets, using current knowledge of opportunities and threats.

IRCAD and Invasive Species Management

Regional Conservation Assessments should incorporate knowledge on the distribution and ecology of invasive species into the Regional Strategies to achieve and sustain the Regional Conservation Goals.

Questions / Discussion

A landscape photograph showing a wetland area in the foreground with green and brown vegetation and a body of water. In the background, a city skyline is visible under a clear blue sky. The text "Questions / Discussion" is overlaid in white on the middle of the image.