



**Goldspotted oak borer (GSOB) *Agrilus auroguttatus***



**Goldspotted oak borer (GSOB) *Agrilus auroguttatus***

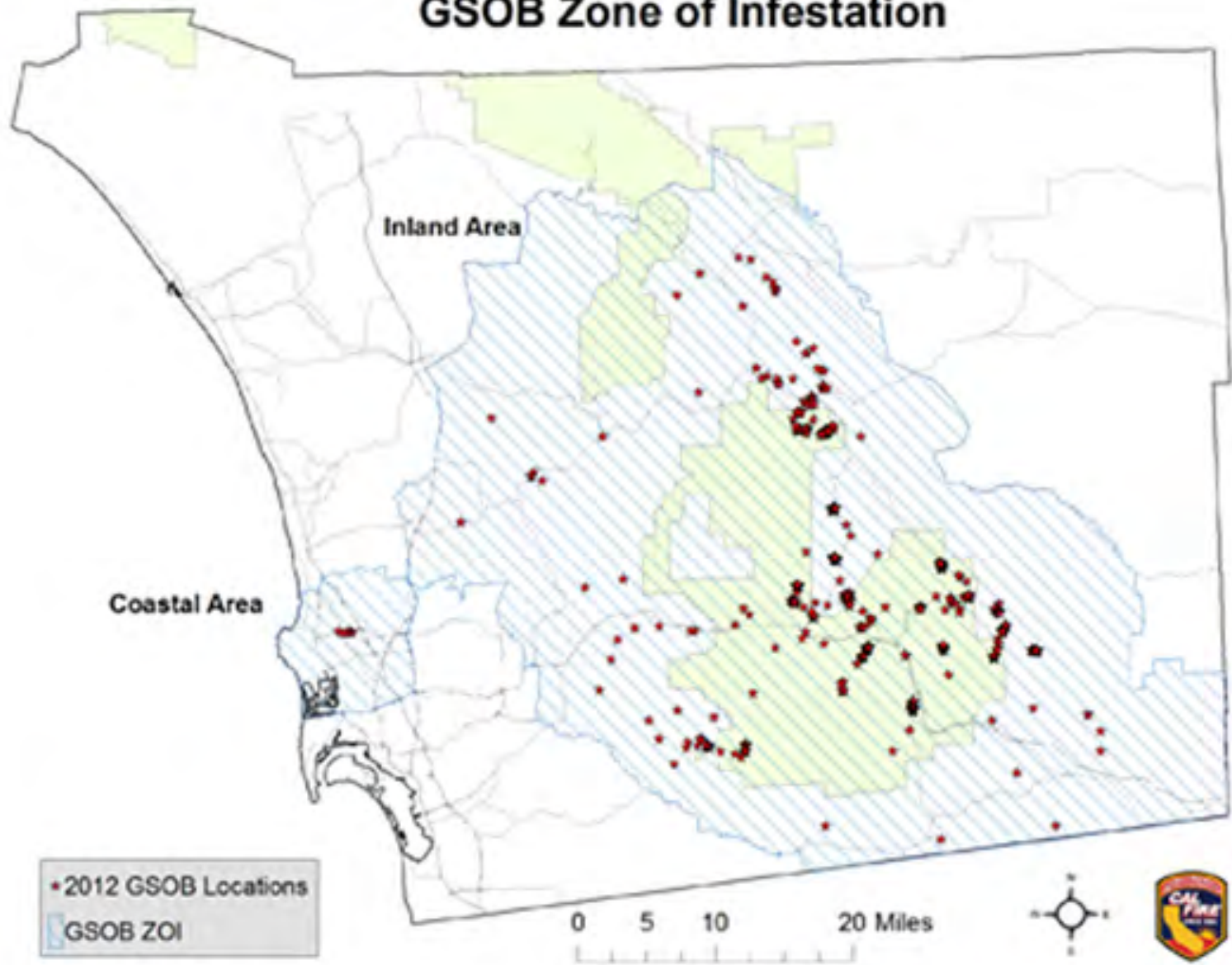


Michael I. Jones, UC Davis  
Used by permission

**Life states of the goldspotted oak borer. From left: fourth-instar larva, fourth instar larva in a hairpin configuration and in a constricted form, pupa and adult.**

**Photo by Mike I. Jones**

# GSOB Zone of Infestation



<http://ucanr.edu/sites/gsobinfo/>



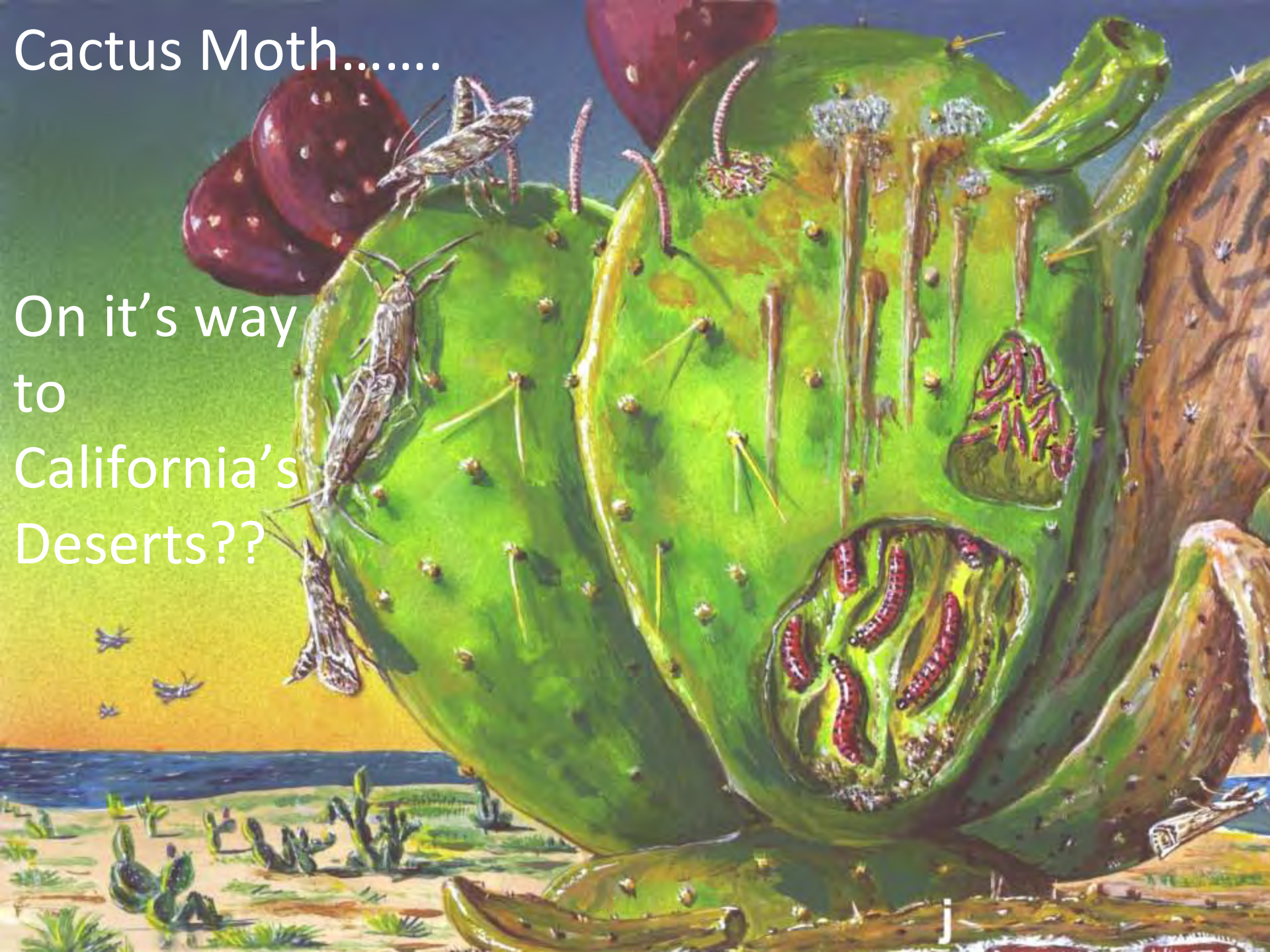
**Polyphagous shothole borer**  
*Euwallaecea sp.*



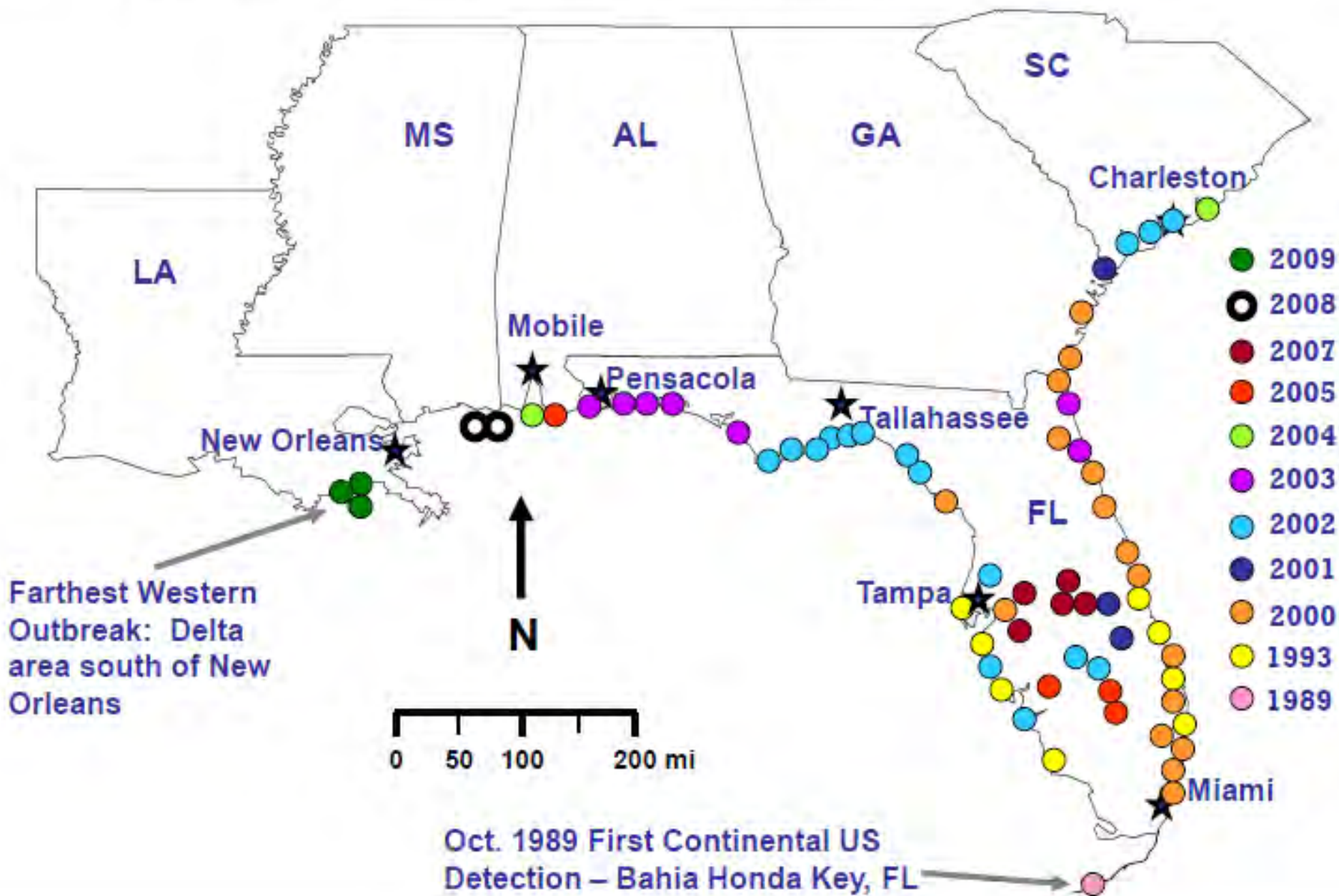
**Red Palm Weevil,**  
***Rhynchophorus ferrugineus***

# Cactus Moth.....

On it's way  
to  
California's  
Deserts??



# *Cactoblastis cactorum* detections in the Southeastern United States







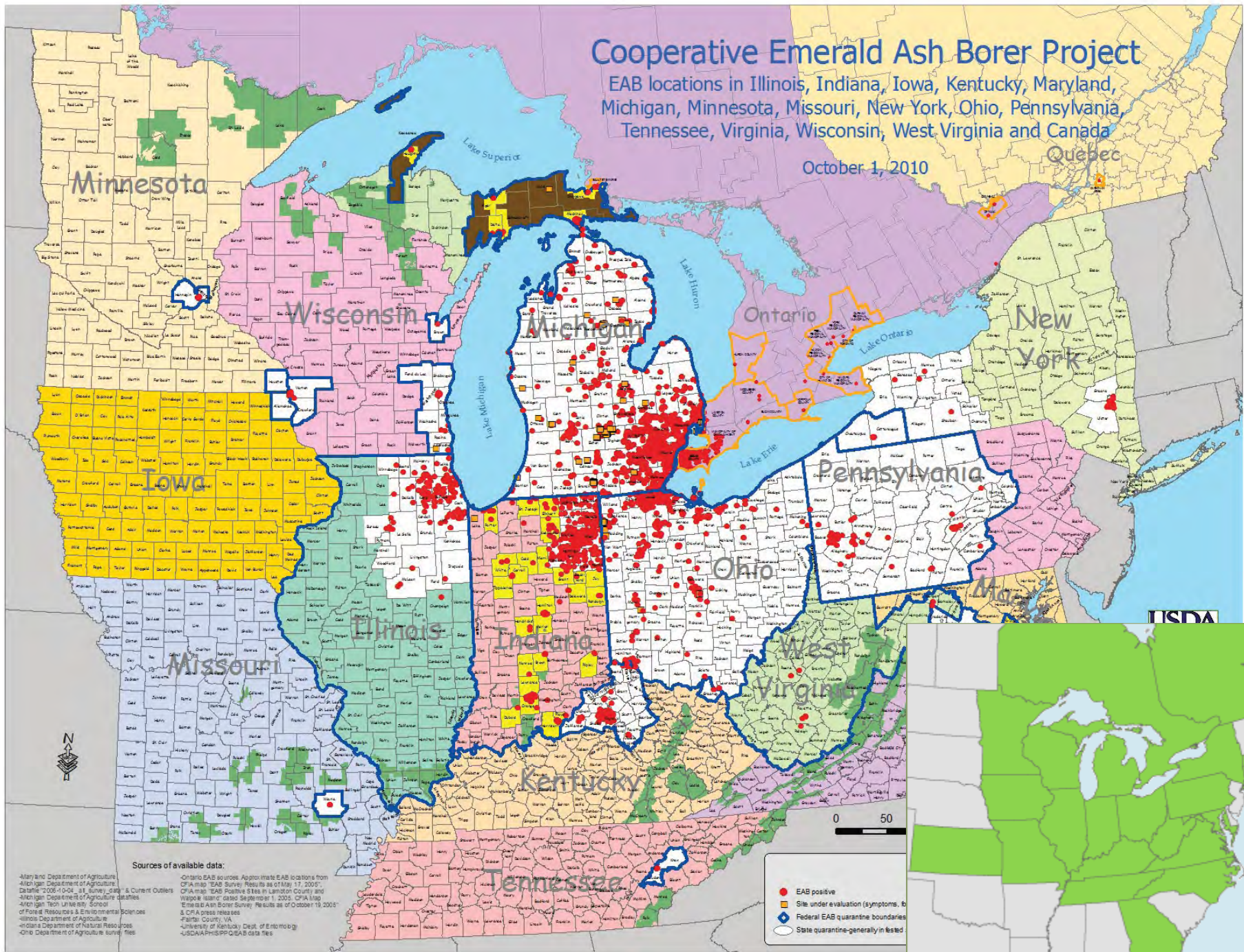
**Emerald ash borer, *Agrilus planipennis***

# Cooperative Emerald Ash Borer Project

EAB locations in Illinois, Indiana, Iowa, Kentucky, Maryland, Michigan, Minnesota, Missouri, New York, Ohio, Pennsylvania, Tennessee, Virginia, Wisconsin, West Virginia and Canada

October 1, 2010

Quebec



**Sources of available data:**

- Maryland Department of Agriculture
- Michigan Department of Agriculture
- Datefile 2006-10-04\_01\_00vey\_0001 & Current Outlook
- Michigan Department of Agriculture, Michigan State University, School of Forest Resources & Environmental Sciences
- Illinois Department of Agriculture
- Indiana Department of Natural Resources
- Iowa Department of Agriculture, Forestry & Food
- Kentucky Department of Agriculture
- Ohio Department of Agriculture, Survey Files
- Ontario EAB sources: Approximate EAB locations from OFI map "EAB Survey Results as of May 17, 2005"
- OFI map "EAB Positive Sites in Laramie County and Niagara Basin" dated September 1, 2005. OFI map "Emerald Ash Borer Survey Results as of October 13, 2005"
- CFR A press releases
- Falmouth County, VA
- University of Kentucky Dept. of Entomology
- USDAAPHISPPQ/EAB data files

- EAB positive
- Site under evaluation (symptoms, to be confirmed)
- ◆ Federal EAB quarantine boundaries
- State quarantine—generally in tested areas

USDA