

NV NOXIOUS WEED PREVENTION & MONITORING MEASURES

Jamie Greer

Noxious Weeds Coordinator

Nevada Department of Agriculture

775-353-3640

jgreer@agri.nv.gov



PREVENTION OF SPREAD



Nevada Weed Free Certification Program

NV WEED FREE CERTIFICATION PROGRAM

OBJECTIVE: To limit and reduce the spread of noxious weeds through forage, mulch and aggregate.

WHO?

- Anyone can participate as a consumer or producer
- NDA officials inspect and issue certifications

WHEN?

- Forage producers must have an inspection conducted and a certification issued before each cutting throughout the growing season.
- Gravel materials producers must have a minimum of two inspections each year to gain certification.
- Certified materials can be obtained or purchased at anytime as available.

WHAT?

- Hay bales or cubes (grass, alfalfa, wheat)
- Straw bales (mulch)
- Forage pellets
- Topsoil/Fill dirt
- Rocks
- Sand/Gravel

WHERE?

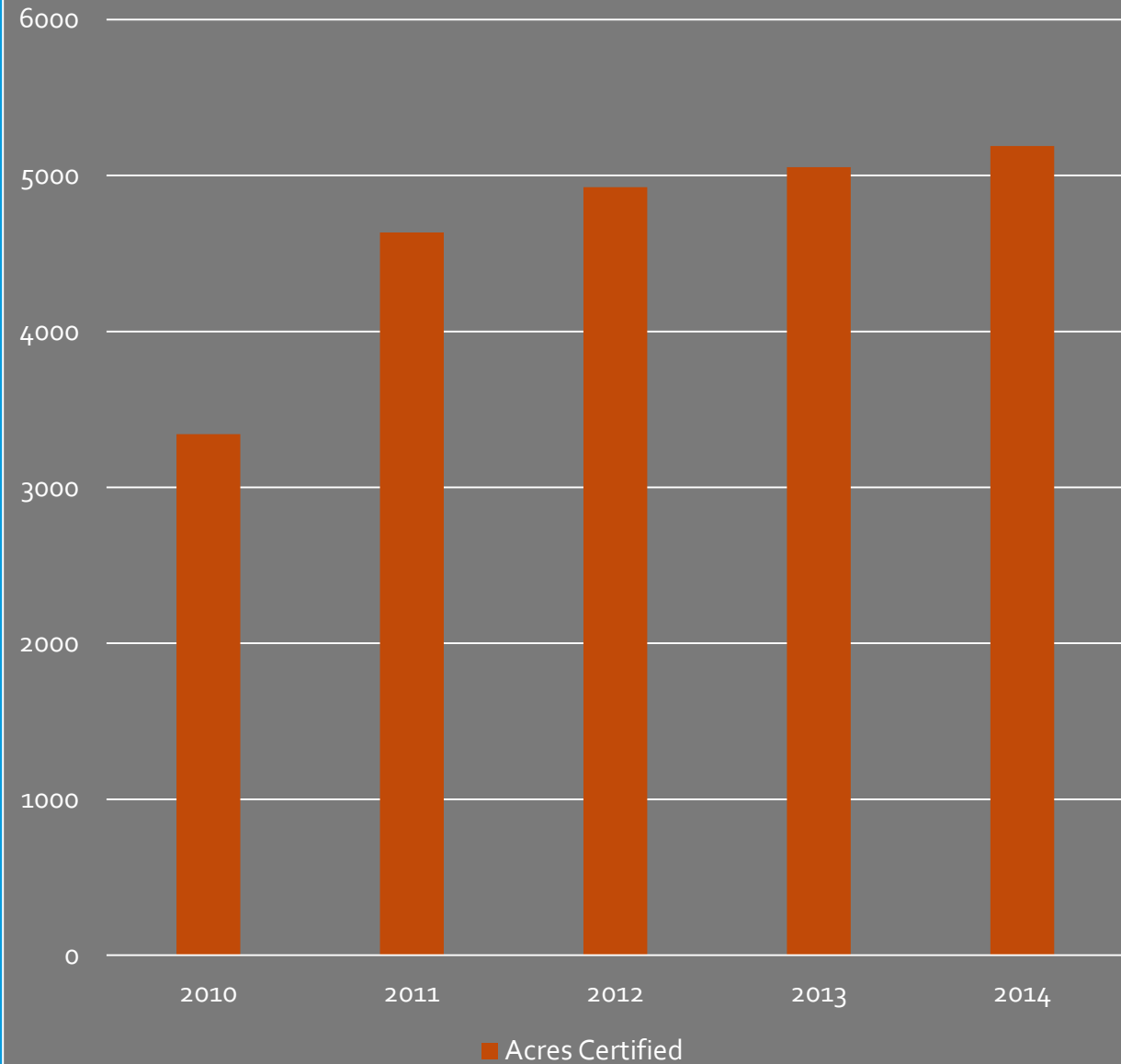
- Producers scattered all across the state
- Materials required to be used on USFS, BLM (per district),
NDOT (per contract), and DOD lands

Nevada Certified Weed Free Producers

Forage Producers Gravel Providers



Nevada Weed Free Certified Acres



WEED FREE CERTIFICATION UPDATES

- Large increase in amount of earth material providers certified as weed free in Nevada
- New industry interest in certifying new mulch materials as weed free
- North American Invasive Species Management Association (NAISMA) standard updates coming soon
- NEW Nevada/California coordination with interested CA counties wanting to certify products to the NAISMA Weed Free Standards.
- CA currently one of the only western states not certifying forage to the NAISMA standards



Certificate No: _____

 **Nevada Department Agriculture**
405 South 21st Street
Sparks, Nevada 89431
Weed Free Forage Program

 **Certificate of Inspection**

This certifies that the field(s) described herein, have been inspected according to North American Forage Certification Standards. The objective of this program is to help prevent and slow the spread of Designated Noxious Weeds by providing forage which is free* of the potential for transport and dispersal of listed weed species.

Inspection Date: ____ / ____ / ____ Cutting Date: ____ / ____ / ____

Producer: _____ Phone: _____

Address: _____

City: _____ State: _____ ZIP Code: _____

Field(s) Description: _____

Acres Inspected: _____ Cutting: ☐ 1st ☐ 2nd ☐ 3rd ☐ 4th ☐ Other: _____

☐ Bulk ☐ Large Bales ☐ Small Bales ☐ Other _____

Forage Product: ☐ Grass ☐ Alfalfa ☐ Mix ☐ Other _____

A. _____ **MEETS** requirements of the North American Forage Certification Standards. This forage may contain variable amounts of annual weeds and/or other weeds not listed as prohibited or noxious.

B. _____ **COMPLIES with MINIMUM** requirements of the North American Forage Certification Standards. This forage contains variable amounts of Prohibited or Noxious weed species which were immature, (no viable seed) when harvested, or were treated to prevent seed formation. These plants, or plant parts, although not usually desirable in the forage product, are not considered able to begin new infestations.

Weeds Noted: _____

Additional Comments: _____

Requirements

Forage must be certifiable within 10 days of harvesting in the Field of Origin by authorized officials. Inspection shall include surrounding ditches, fence rows, easements, roads, etc. and loading areas and stackyards.

Certified by: _____ Title: _____

*Certification does not guarantee the absence of seeds listed as prohibited or noxious; certification is based upon prudent and reasonable visual inspection. This certificate is Not Transferable. Forage must be identified with approved twine or tags. For additional information call the Nevada Department Agriculture at (775) 688-1180 ext. 291

White - Producer Yellow - NDOA Pink - Inspector

INVASIVE PLANT MAPPING/MONITORING MEASURES



www.eddmaps.org
Nevada EDDMaps GIS

EDDMAPS

EARLY DETECTION & DISTRIBUTION MAPPING SYSTEM

WHAT IS IT?

The answer to our Nevada mapping challenges!

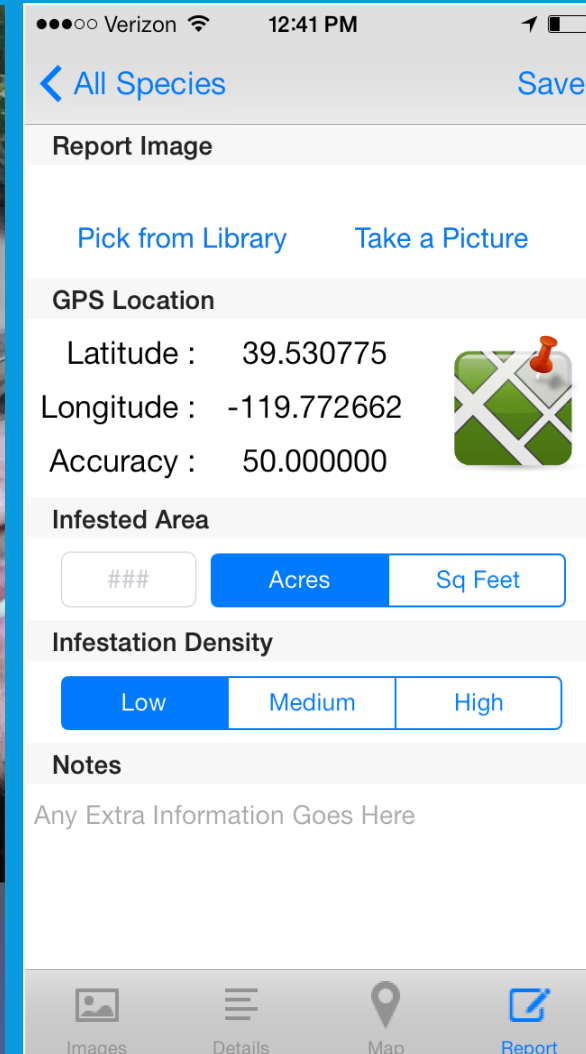
- Online mapping of invasive plant distribution
- One database for local, statewide and national data
- Early Detection and Rapid Response tool; all reports come to NDA or local groups for verification/approval
- Developed by the University of Georgia – Center for Invasive Species and Ecosystem Health in 2005

www.eddmaps.org

EDDMAPS

USEFUL CAPABILITIES

- Database can be linked to already existing databases or data can be bulk uploaded
- See the current distribution of invasive plants/noxious weeds at regional, state and county levels; look up information on new invasive plants
- Download data in a variety of formats
- Online reporting and email alerts for reports made near you
- Collect data using smart phone apps



EDDMapS

www.eddmaps.org

My EDDMapS - Invas

www.eddmaps.org/user/

EDDMapS

Early Detection & Distribution Mapping System

Home

Report Sightings

Distribution Maps

Species Information

Tools & Training

My EDDMapS

About

sign out

Overview

Reports

Download

Alerts

Projects

Edit Profile

View Profile

My EDDMapS - Jamie Greer

User Statistics

	Overall	This Year	This Month
Reports	109	85	29
Species	17	17	9
States	1	1	1
Counties	9	8	6

Recent Reports

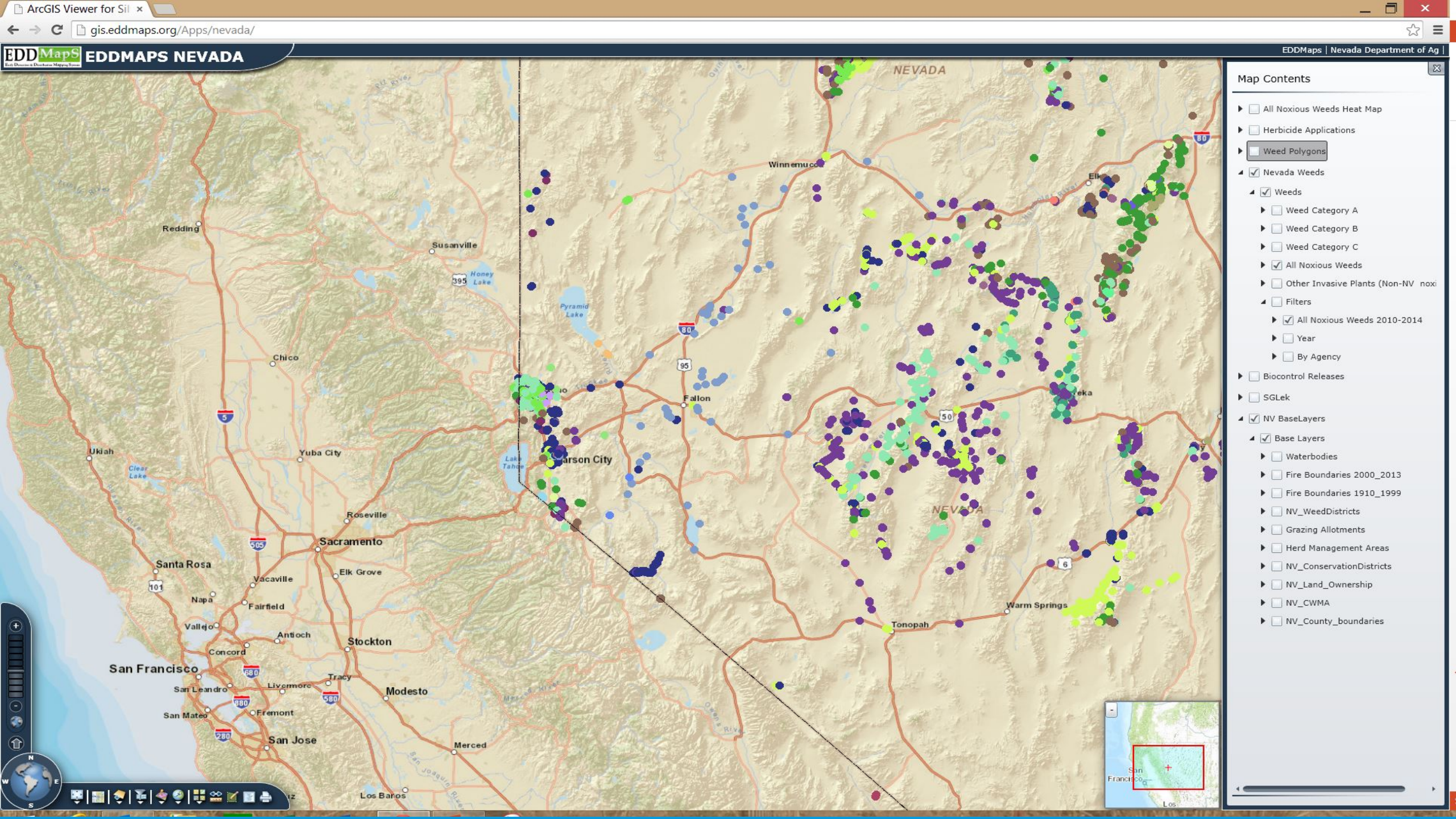
ID	Subject	Location	Date	Manage
4101078	medusahead	Elko County, Nevada	Oct-06-2014	<div>View Edit Revisit Delete</div>
4101077	medusahead	Humboldt County, Nevada	Oct-06-2014	<div>View Edit Revisit Delete</div>
4101076	medusahead	Elko County, Nevada	Oct-06-2014	<div>View Edit Revisit Delete</div>
4101075	Scotch thistle	Elko County, Nevada	Oct-06-2014	<div>View Edit Revisit Delete</div>
4101073	medusahead	Humboldt County, Nevada	Oct-06-2014	<div>View Edit Revisit Delete</div>
4101074	medusahead	Humboldt County, Nevada	Oct-06-2014	<div>View Edit Revisit Delete</div>
4101072	saltcedar	Lyon County, Nevada	Oct-06-2014	<div>View Edit Revisit Delete</div>
4101071	medusahead	Humboldt County, Nevada	Oct-06-2014	<div>View Edit Revisit Delete</div>
4101070	medusahead	Lyon County, Nevada	Oct-06-2014	<div>View Edit Revisit Delete</div>
4101069	bull thistle	Lyon County, Nevada	Oct-06-2014	<div>View Edit Revisit Delete</div>
4101068	Scotch thistle	Washoe County, Nevada	Oct-06-2014	<div>View Edit Revisit Delete</div>
4101067	puncturevine	Humboldt County, Nevada	Oct-06-2014	<div>View Edit Revisit Delete</div>
4101066	Scotch thistle	Elko County, Nevada	Oct-06-2014	<div>View Edit Revisit Delete</div>
4101065	Canada thistle	Douglas County, Nevada	Oct-06-2014	<div>View Edit Revisit Delete</div>
4101064	perennial pepperweed	Lyon County, Nevada	Oct-06-2014	<div>View Edit Revisit Delete</div>
4101063	musk thistle	Elko County, Nevada	Oct-06-2014	<div>View Edit Revisit Delete</div>

NEVADA EDDMAPS GIS

WHAT IS IT?

The answer to our Nevada long term mapping/monitoring challenges!

- Customized online GIS database of Nevada's invasive plants and other relevant databases
- Long term monitoring and programmatic decision making and "story telling" tool
- Links and updates in real time with all EDDMaps reports
- Developed by NDA, MIA Consulting and EDDMaps in 2014
- Managed by NDA – use permitted by NDA approved log in



ArcGIS Viewer for Sil x

gis.eddmaps.org/Apps/nevada/

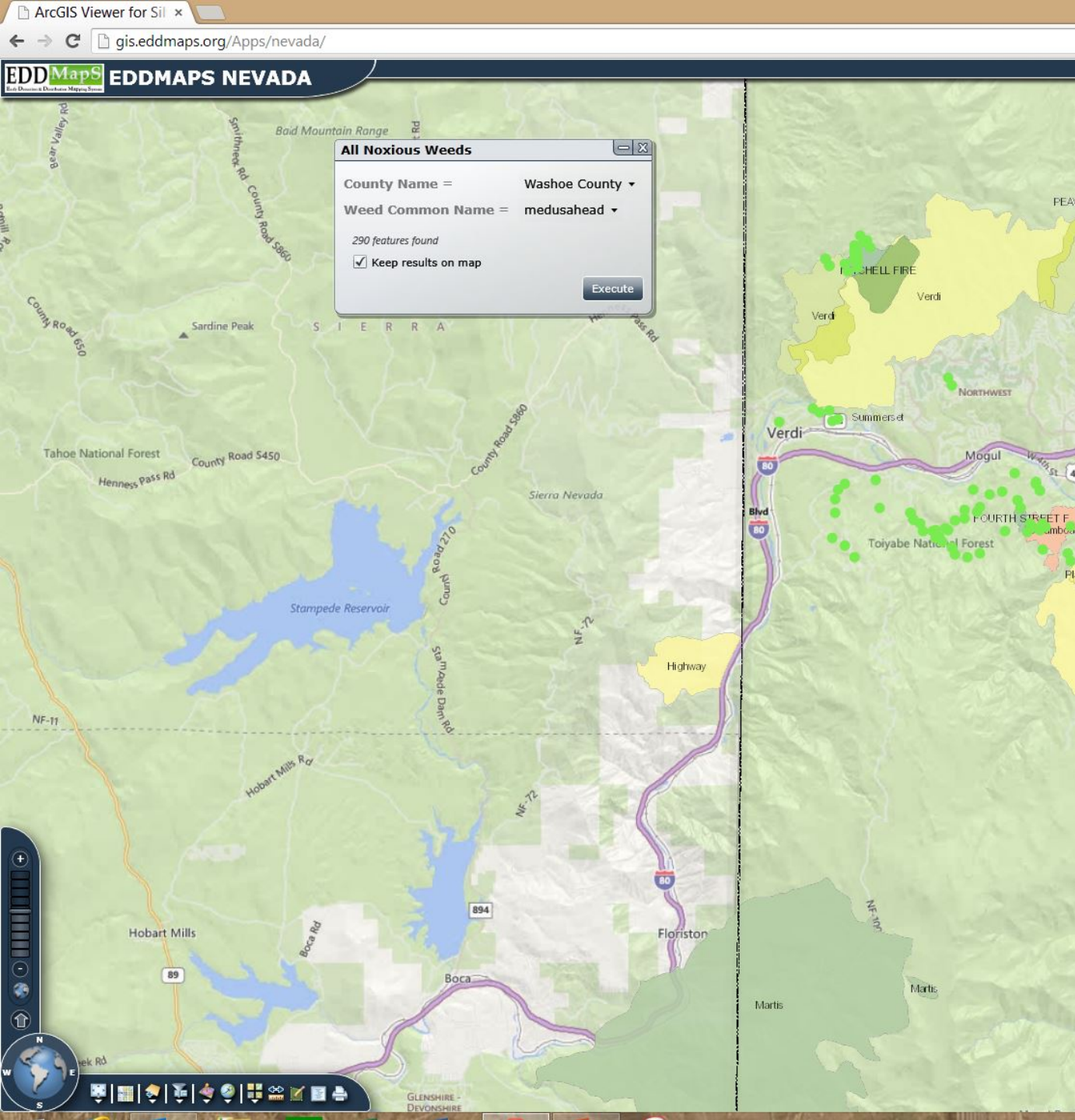
EDDMaps | Nevada Department of Ag

EDDMaps NEVADA

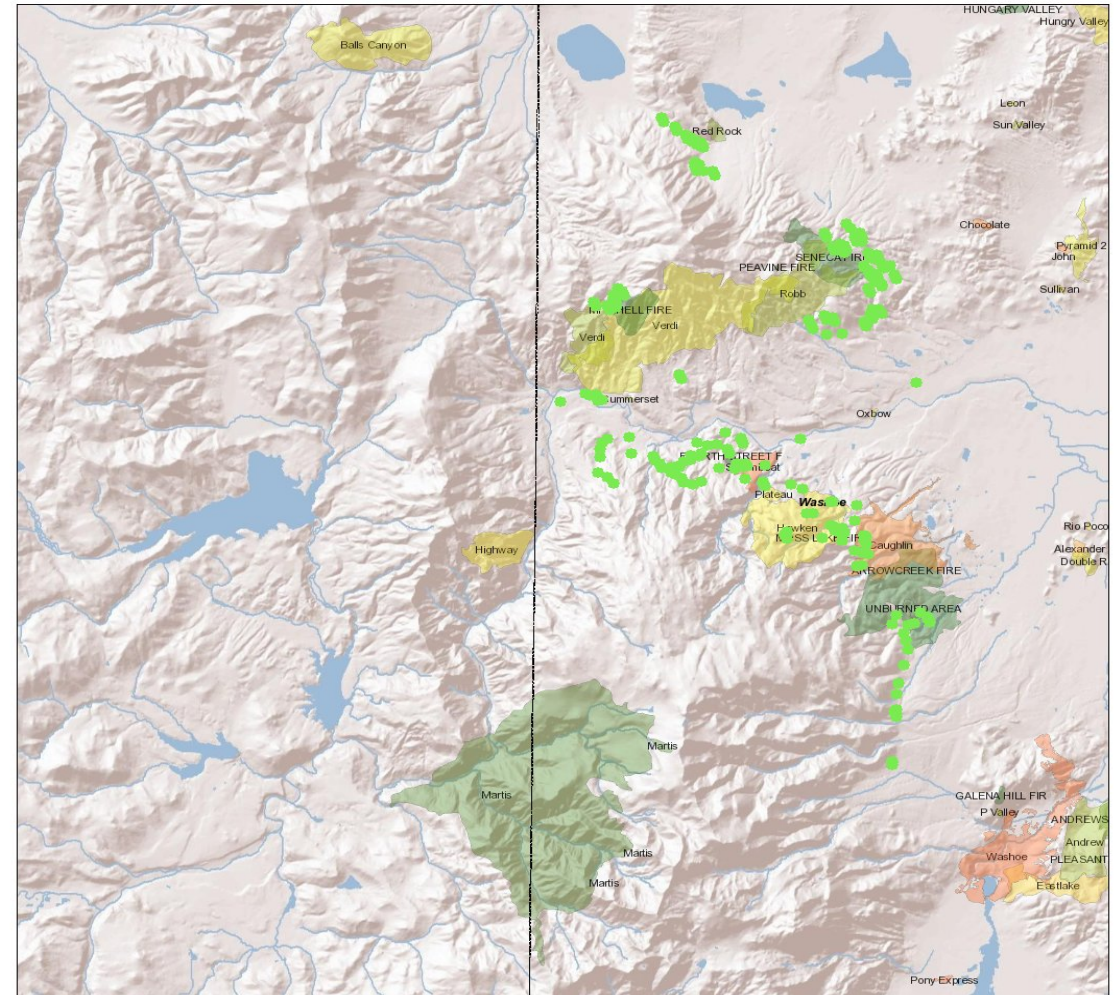
puncturevine 1 of 2

Area_Units	Null
Canopy_cover	Null
Ownership	Null
image1	http://www.eddmaps.org/report/images/imagefile2530.jpg
image2	Null
image3	Null
Treatment	Null
TreatmentComments	Null





Washoe County Fires and Medusahead Infestations



October 8, 2014

- medusahead
- State_Boundary
- Nevada.DBO_NV_County_boundaries
- 2000
- 2001
- 2002
- 2003
- 2004
- 2005
- 2006
- 2007
- 2008
- 2009

- 2010
- 2011
- 2012
- 2013

World Shaded Relief

1:199,954

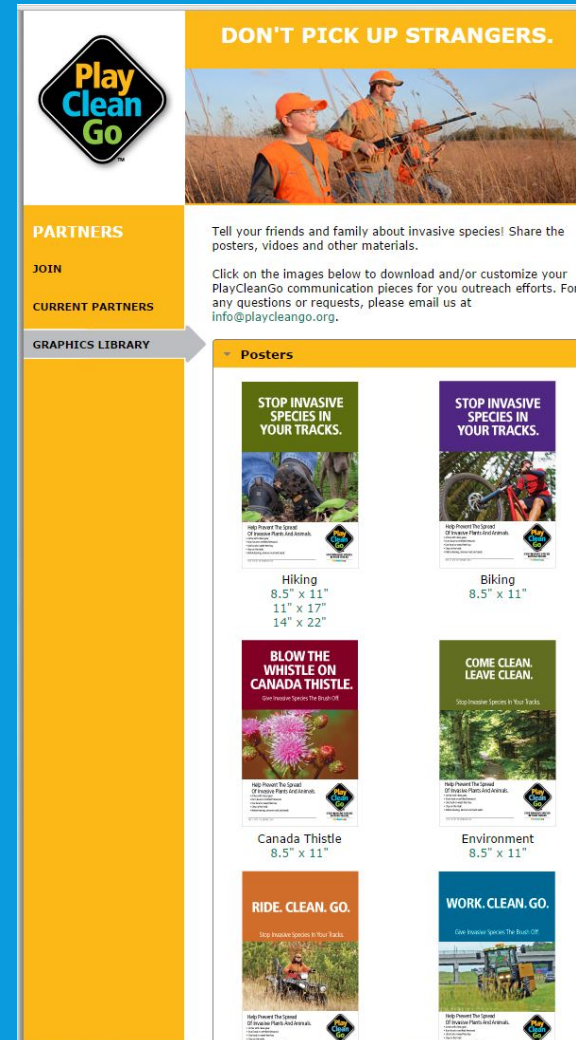
0 2.25 4.5 9 mi
0 3.75 7.5 15 km

Copyright © 2014 Esri

Nevada Department of Agriculture
Sources: USGS, FAO, NPS, EPA, ESRI, DeLorme, TANA, and other suppliers

FUTURE NOXIOUS WEED PREVENTION & MONITORING PLANS

- New Nevada partnership with Play Clean Go outreach and prevention campaign
- CAL-IPC, NDA and EDDMaps partnership for Great Basin LLC Mapping/Data Collaboration Project
- CA/NV Weed Free Certification Collaboration to fit the same requirements and standards
- New Nevada statute revisions exploration for noxious weed property inspections before sale and quarantine enforcements for noxious weeds to prevent spread



QUESTIONS



JAMIE GREER
NEVADA DEPARTMENT OF AGRICULTURE
775-353-3640

JGREER@AGRI.NV.GOV

