

Choosing Your Battles, Prioritizing Invasive Plant Management

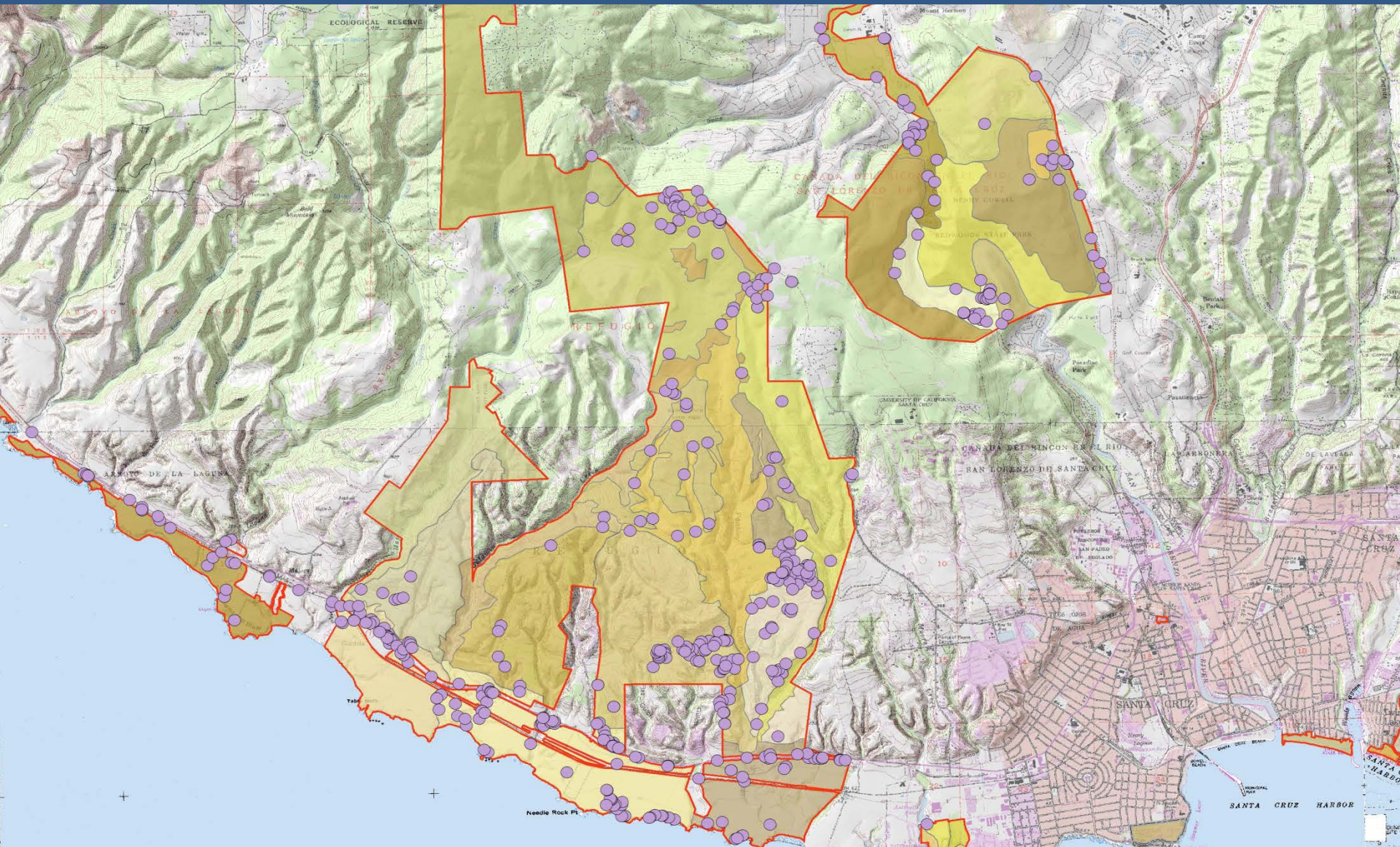
Tim Hyland, Santa Cruz District
Cal-IPC Symposium
October 9th, 2014




How to Prioritize?

What your predecessor worked on?
What has funding?
Favorite Place?
Favorite Weed?

What And Where Are Your Weeds?

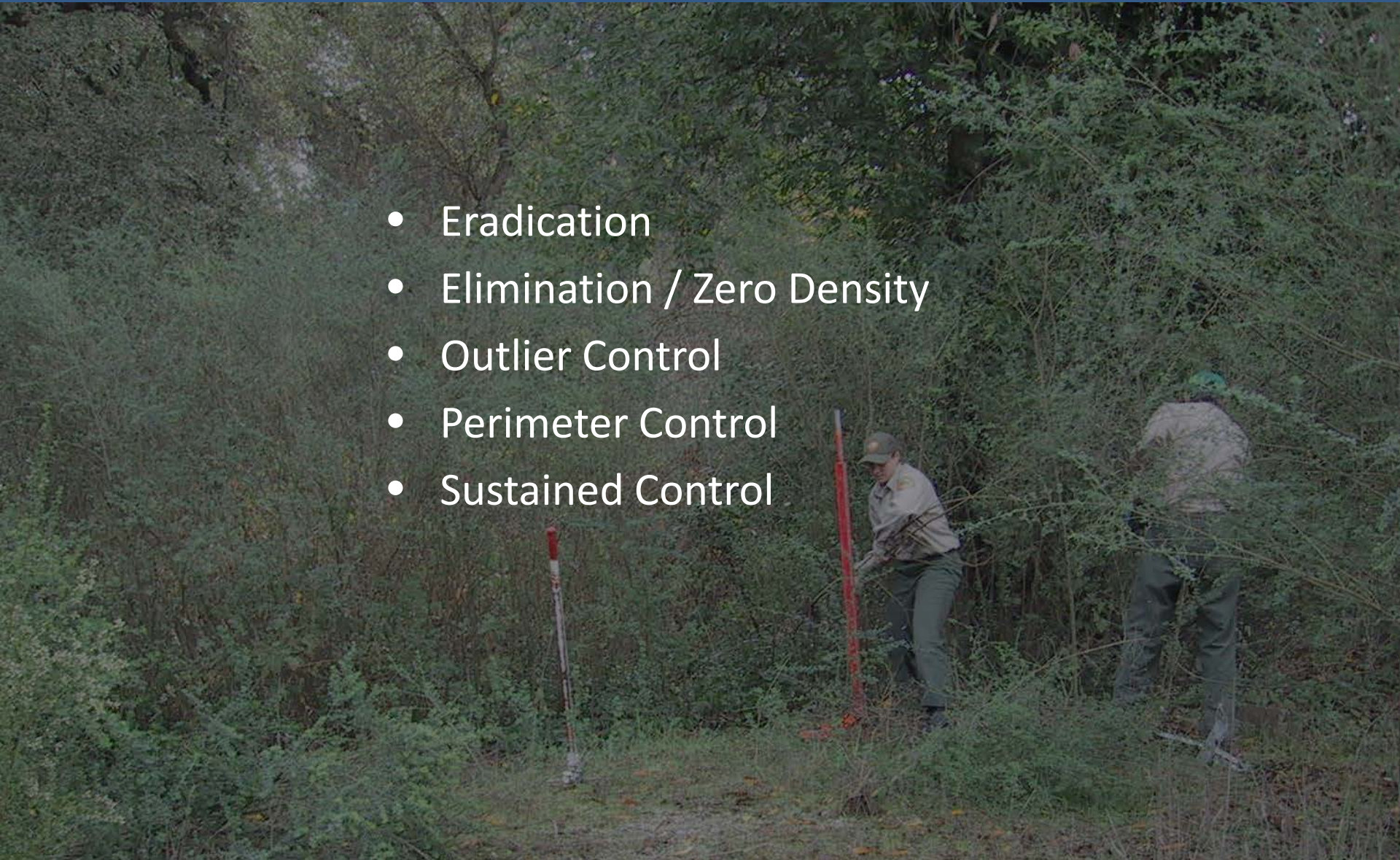


Our Approach

- 
- Goal
 - Rate/Likelihood of Spread
 - Threat to Sensitive Resources
 - Logistics
 - Politics
 - Potential for Success
 - Eradication dividend

Goal

- Eradication
- Elimination / Zero Density
- Outlier Control
- Perimeter Control
- Sustained Control



Rate / Likelihood of Spread



Threat to Sensitive Resources

- Listed Species
- Rare Habitats



Portuguese Broom in Sand Parkland, Santa Cruz County

Logistics

- Distance from base of operations
- Steep slopes
- Accessibility
- Poison oak
- Complexity of control techniques

Politics

- Multiple Land Owners
- Visibility of Project
- Public Perception
- Permitting
- Other entities Interested in Helping

Potential for Success

- Efficacy of Control
- Seed Bank
- Detectability
- Life Cycle



Potential for Success

- Efficacy of Control Method
- Seed Bank
- Detectability
- Life Cycle
- Likelihood of Reinvasion

Eradication Dividend



Eucalyptus globulus, Santa Cruz County

Excel Ranking Form

	Park	M.U.	Sub M.U.	Goal	Species	
	Wilder Ranch	Gray Whale	Baldwin Grasslands	Zero Density	Cotoneaster	
	Likelihood of spread				2	
	Threat to sensitive resources				2	
	Logistics (P.O. slope, access)				3	
	Political (Neighbors, county, crew morale)				3	
	Potential for Success (Restoration, follow up)				3	
	Eradication dividend (Effort required to maintain goal)				2	
	Ranking				15	
	Scores range from 0-3 with the highest number denoting ease and threat					

