



From prevention to treatment: Yosemite's suite of invasive plant management efforts

Garrett Dickman

Botanist

Yosemite National Park



Invasive Plant Management Plans 2008, 2010 Annual public workplan





Education and outreach



Prevention

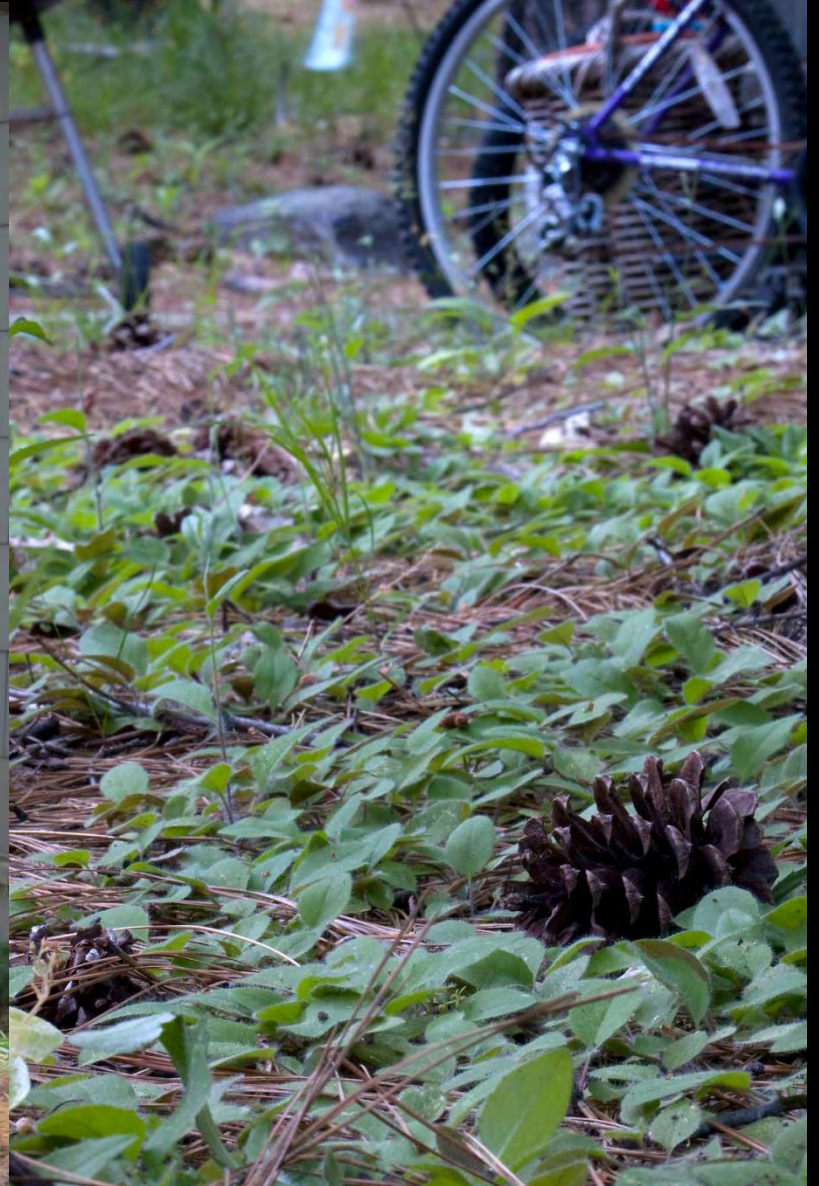




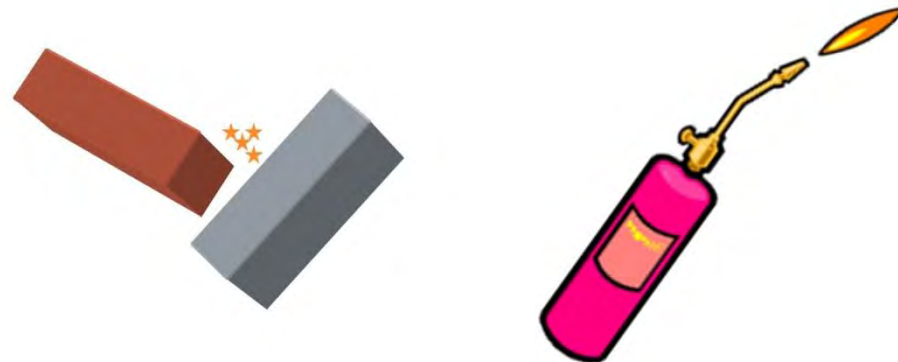




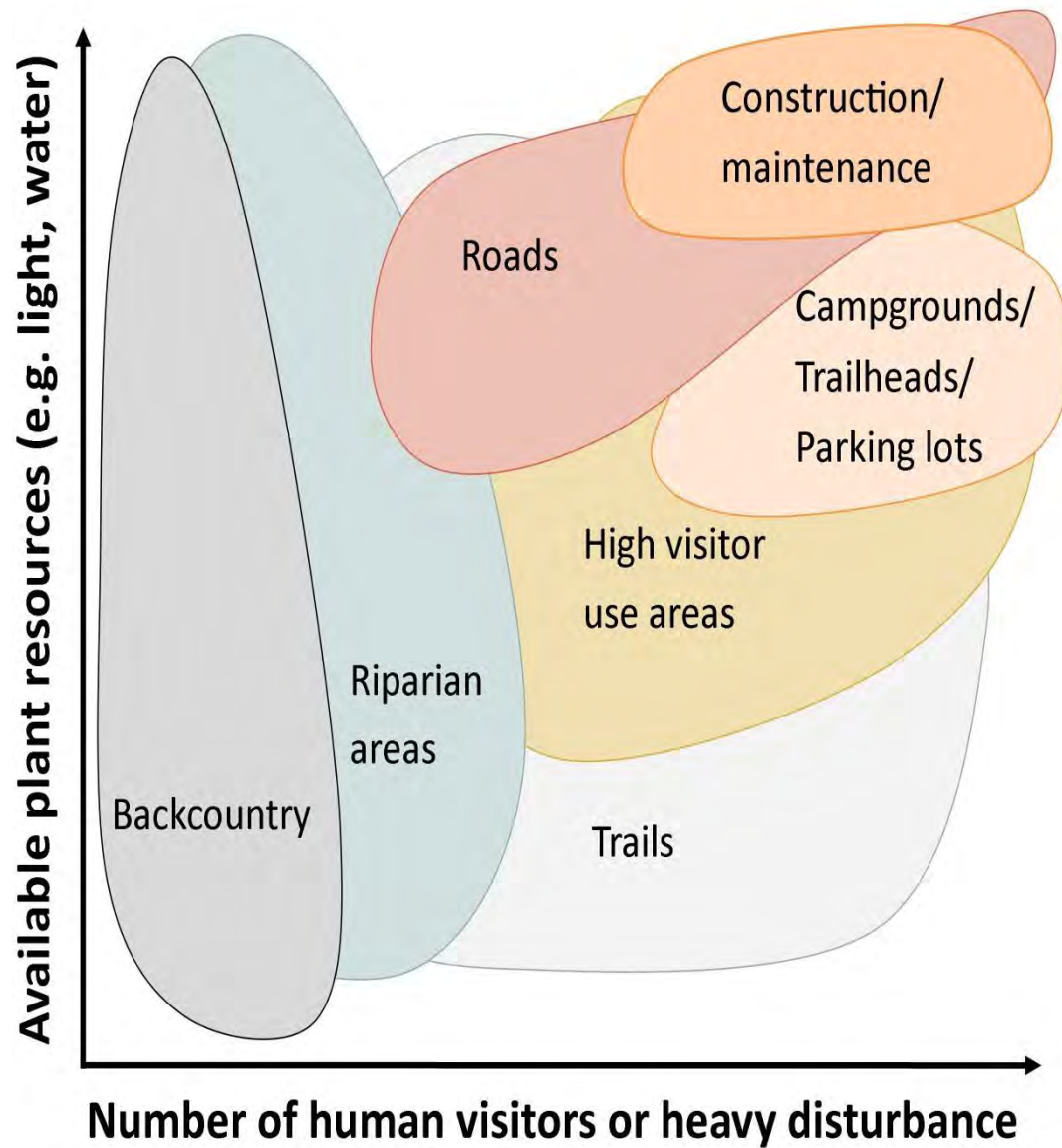
Early Detection and Rapid Response

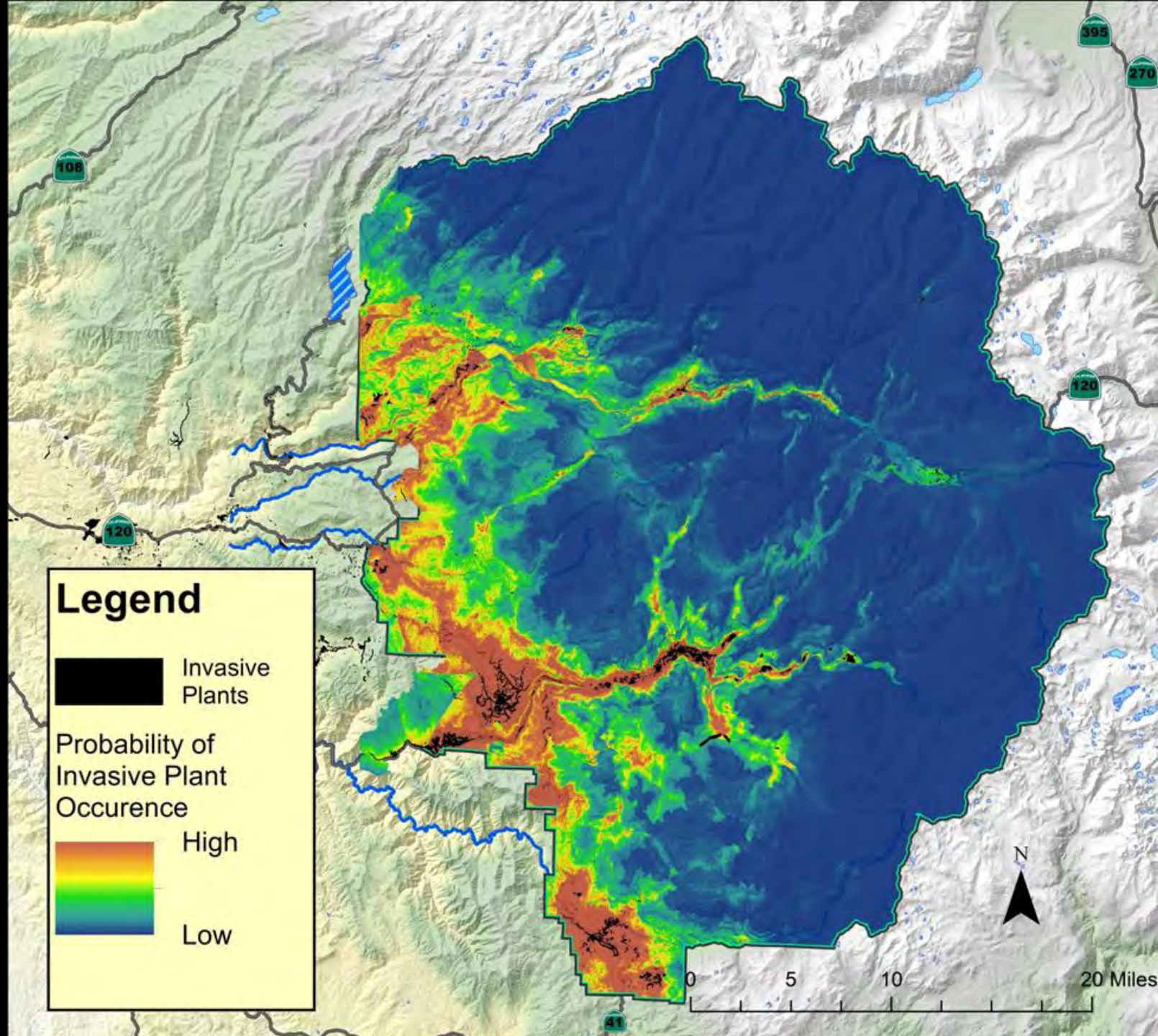


Plant resource availability



Plant propagule pressure





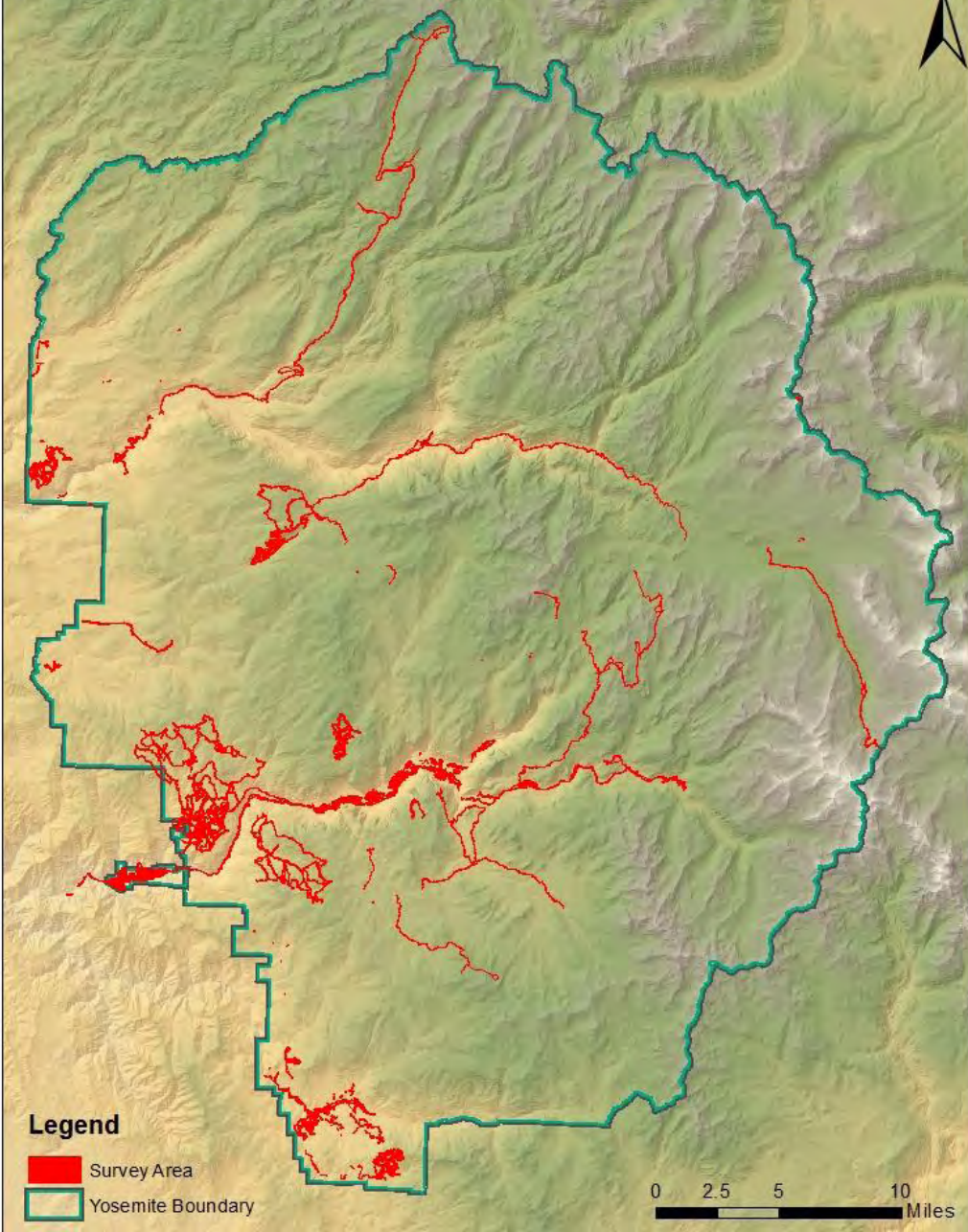


1%

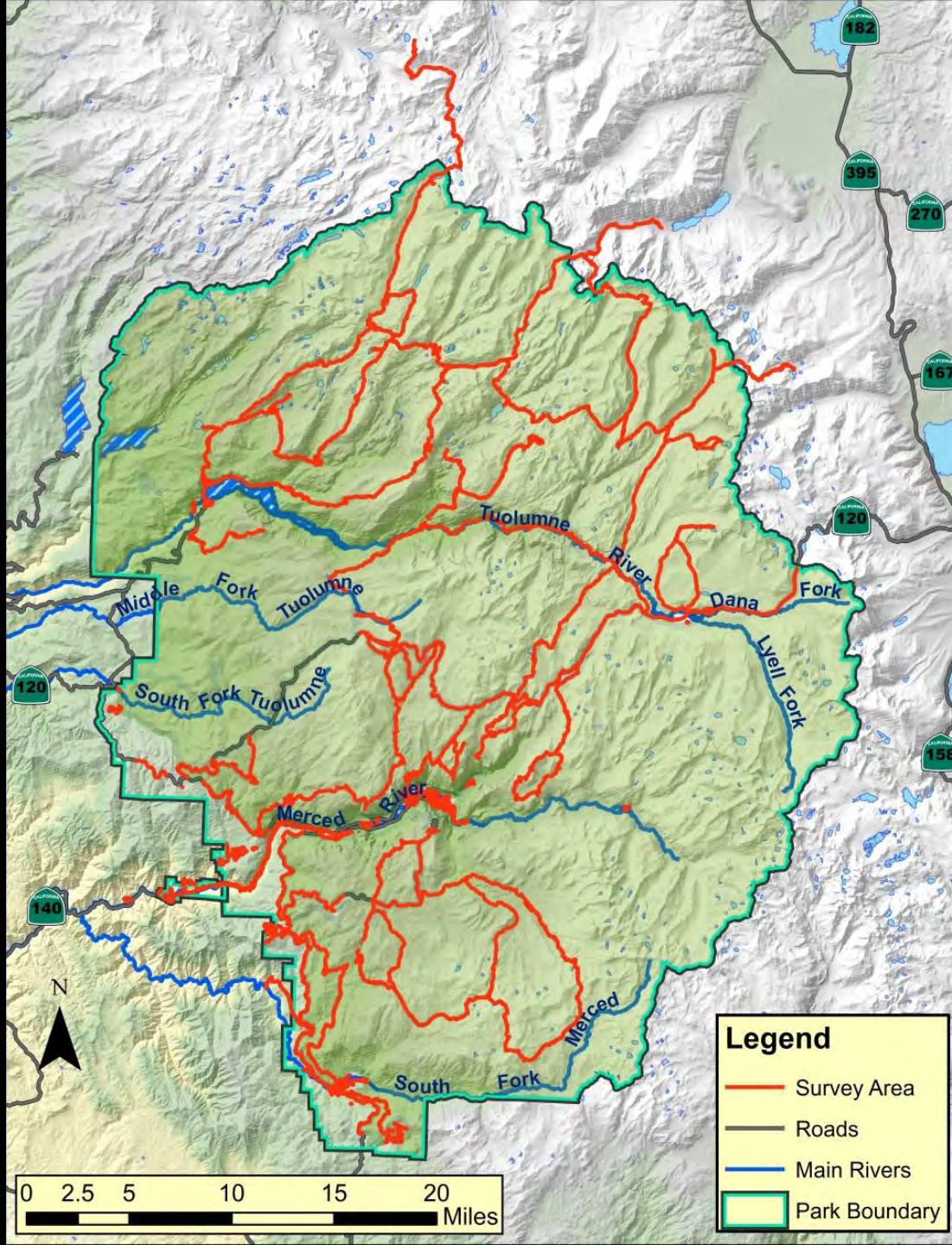
Of Yosemite had been surveyed

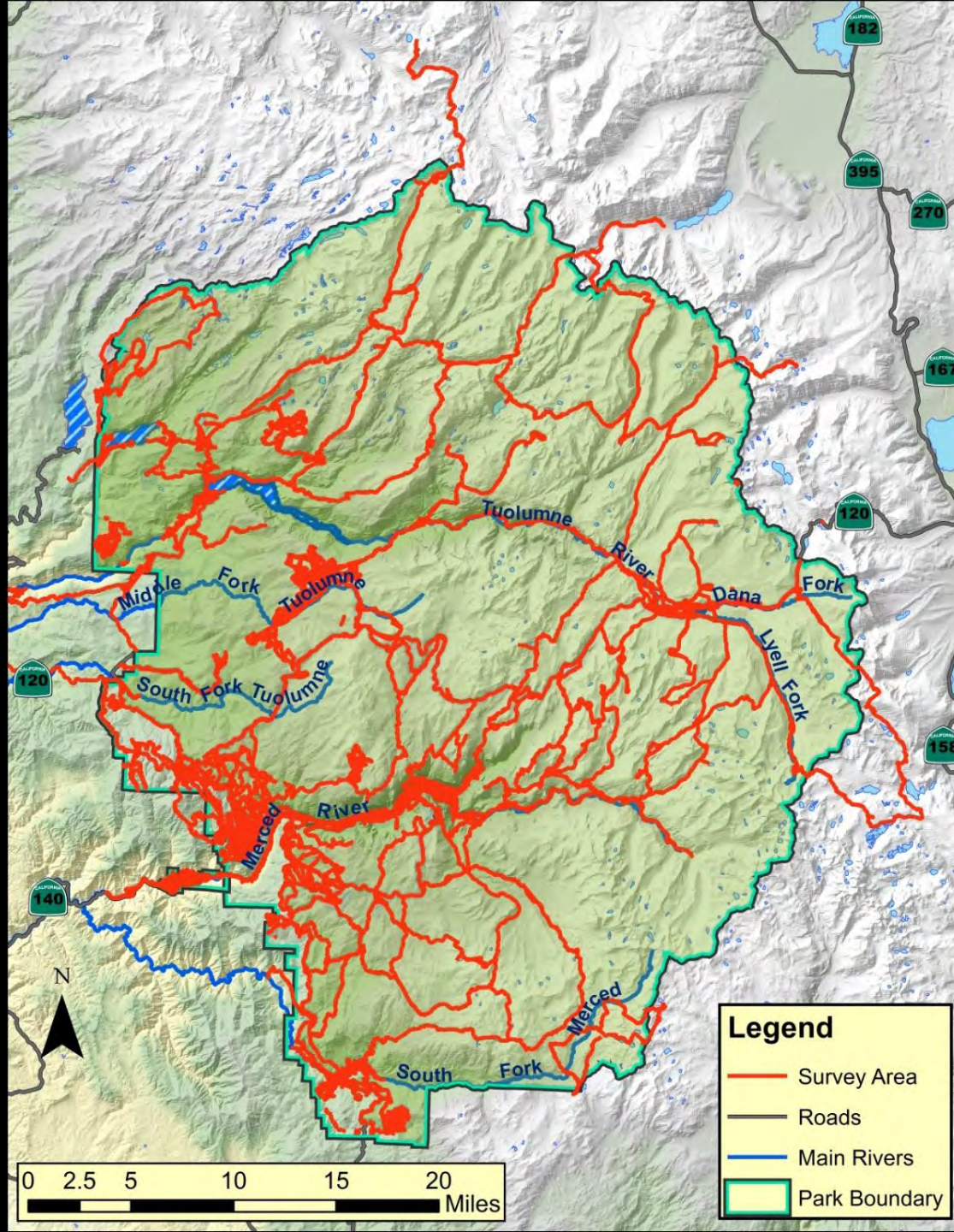


Non-native Invasive Plant Surveys 2008-2011



2014





Acres surveyed



Before 2012
8,003



Presently
23,899

Number of populations mapped



Before 2012

9,503



Presently

19,922

Gross infested acres



Before 2012

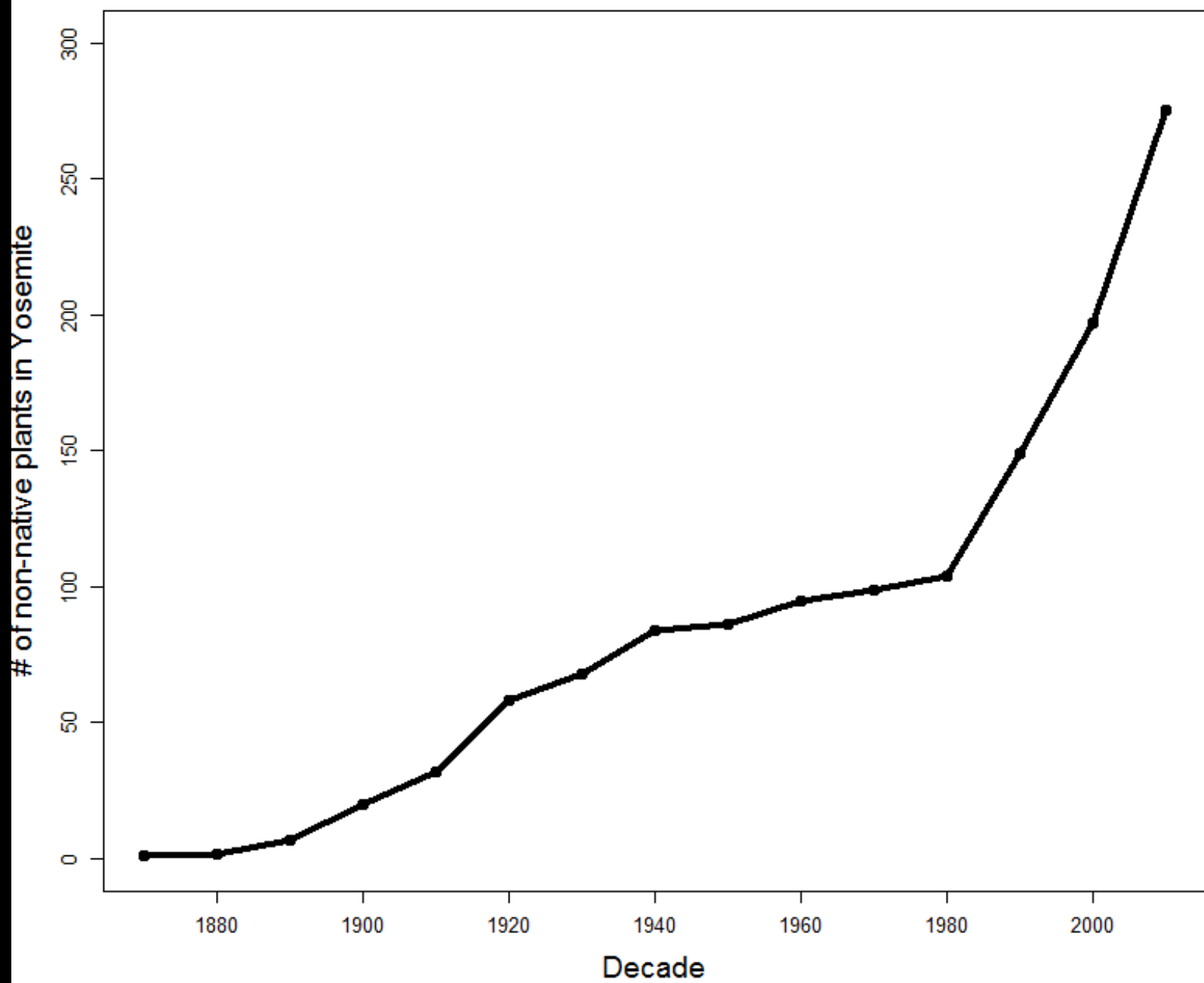
1,332



Presently

2,542

Cumulative non-native plants in Yosemite





16%

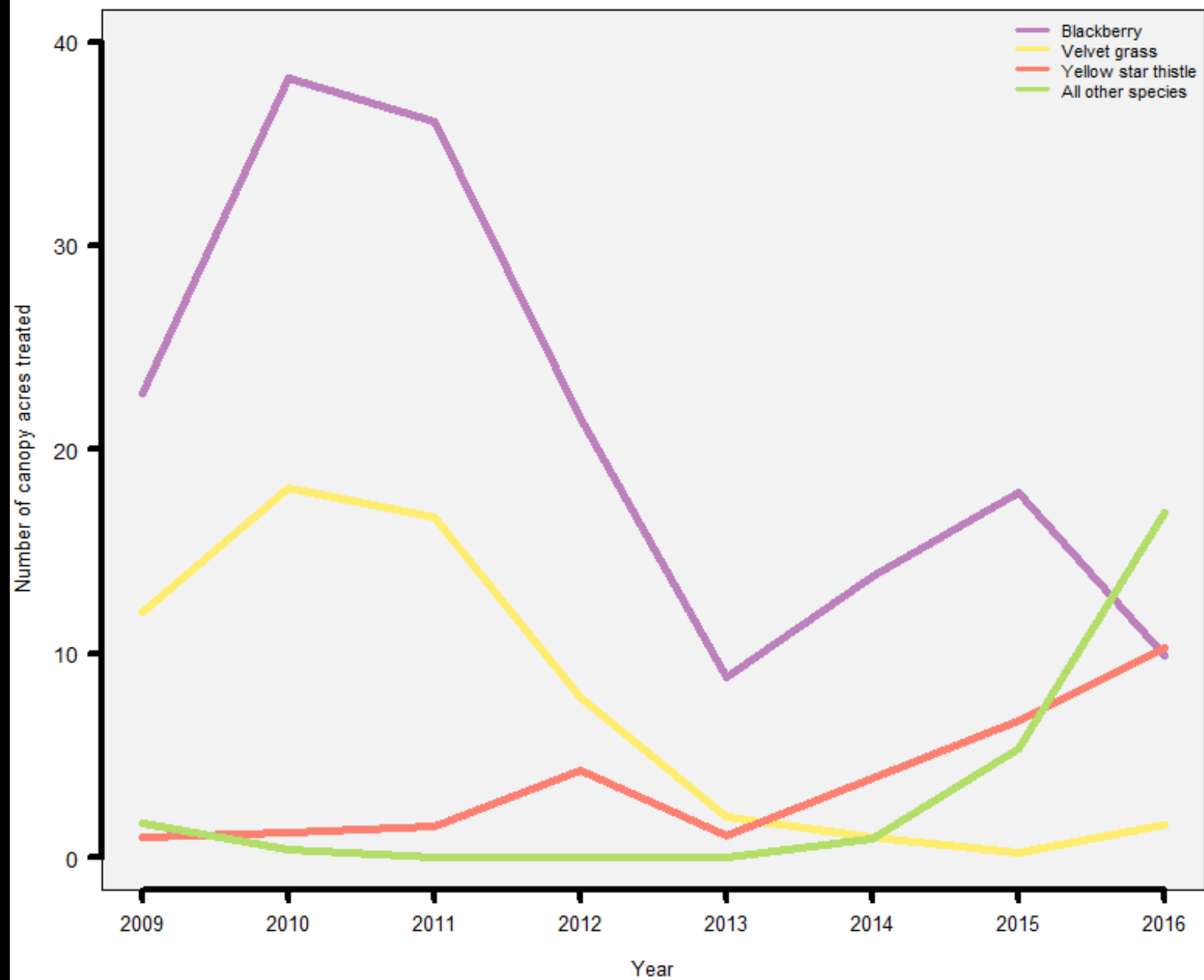
Of plant species in Yosemite are non-native
(276/1674)

Control











Monitoring and adaptive management







Control

2009



2010



Glyphosate



