



© Elizabeth Carmel

Northern Sierra Partnership

FEATHER RIVER



LAND TRUST



SIERRA BUSINESS COUNCIL



Protecting nature. Preserving life.™

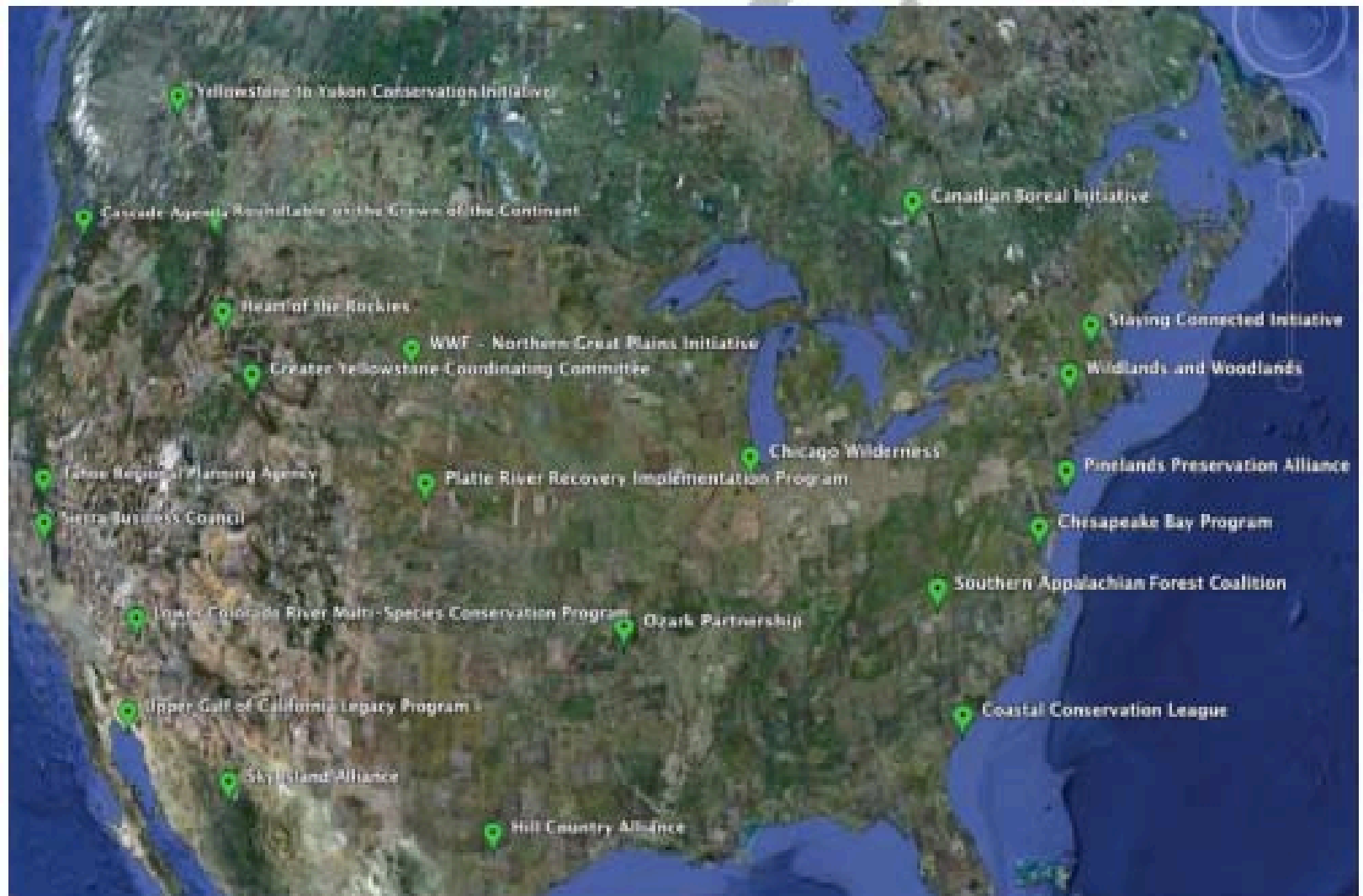


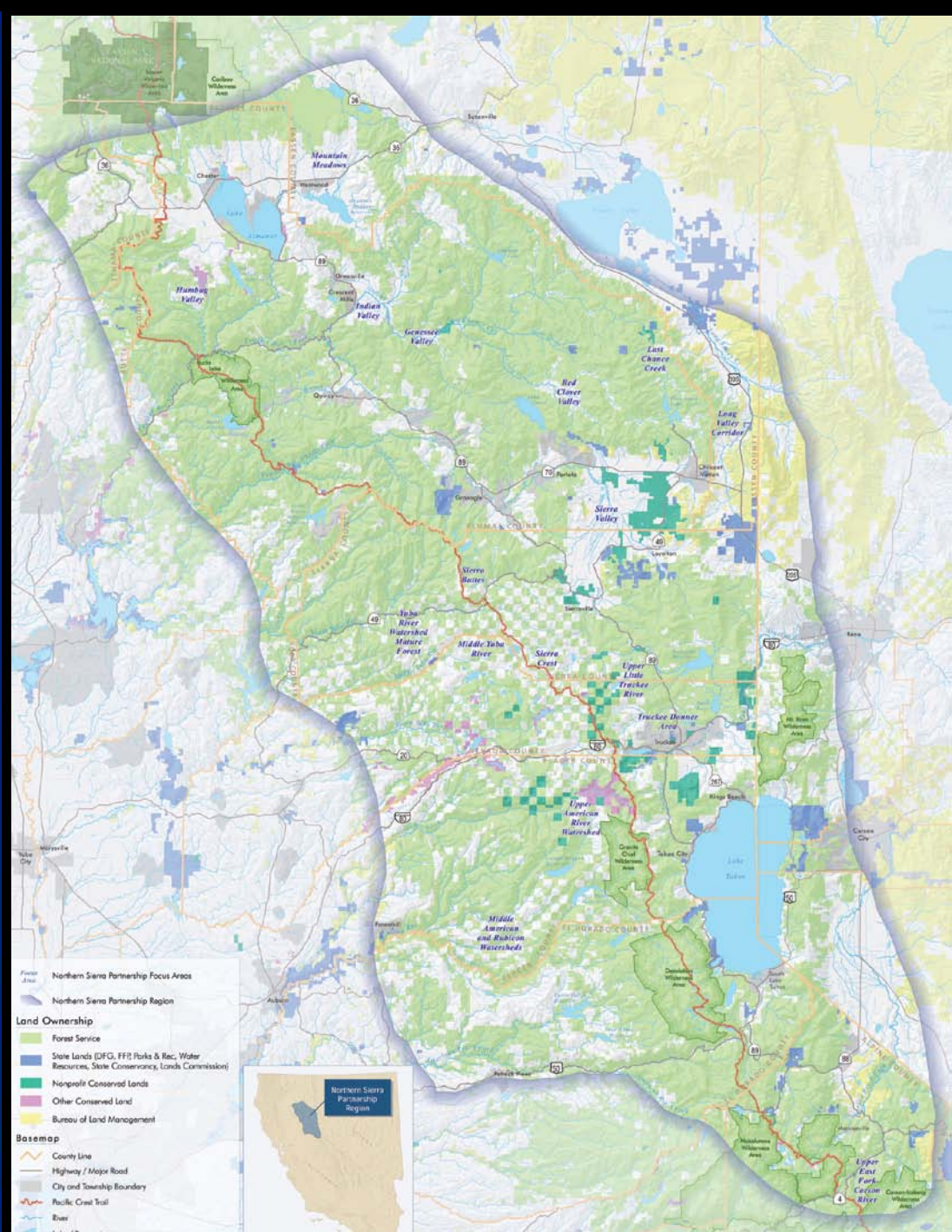
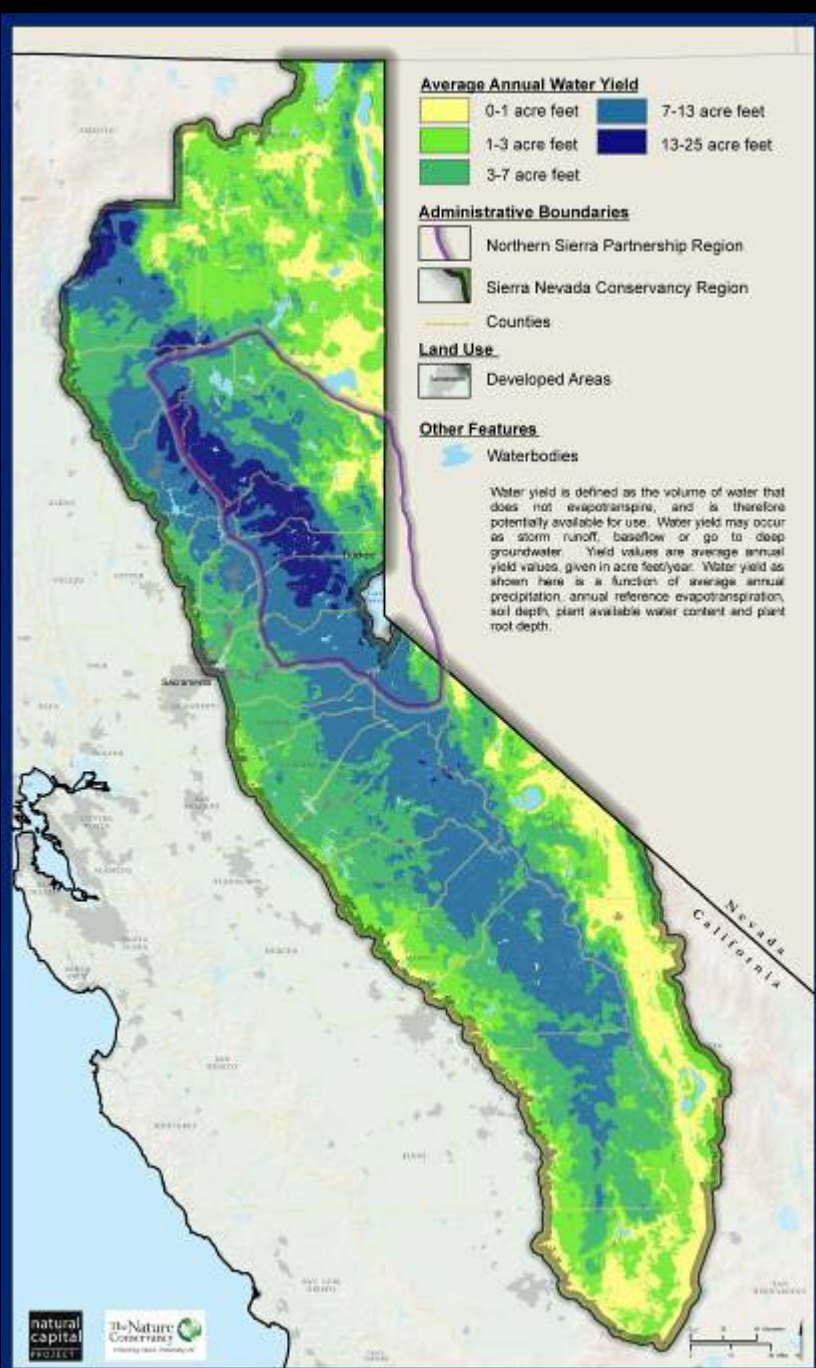
TRUCKEE & DONNER
LAND TRUST



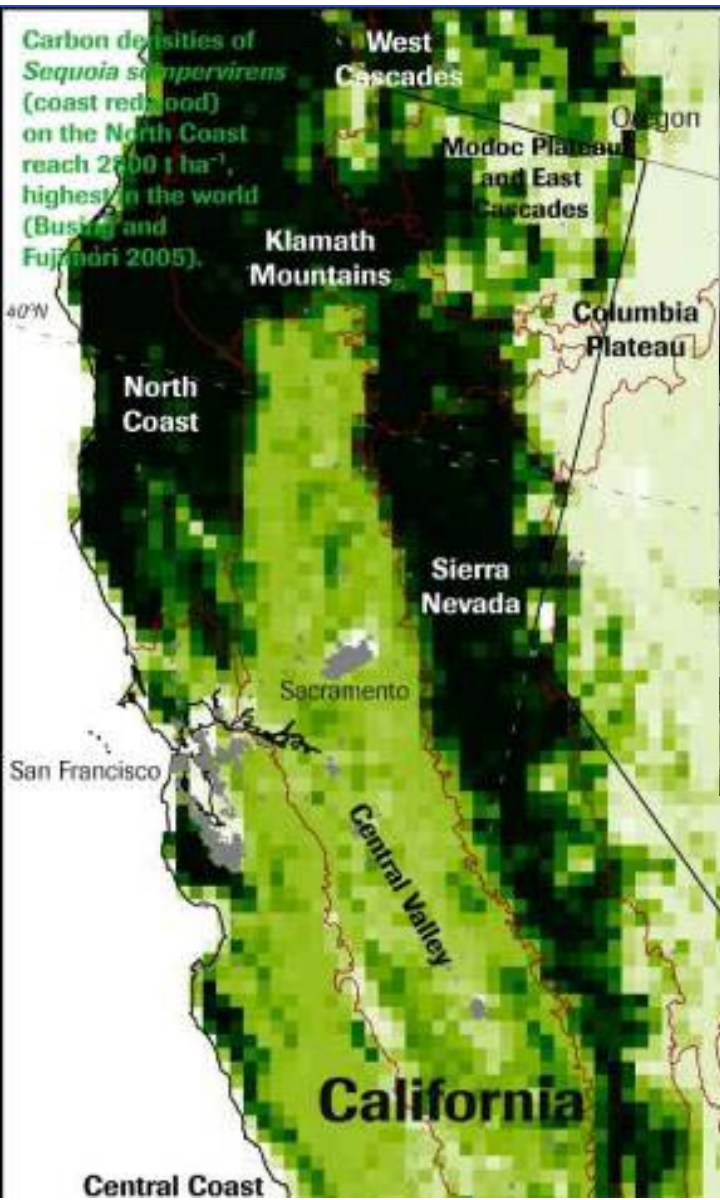
CONSERVING LAND FOR PEOPLE

Practitioners' Network for Large Landscape Conservation





Exceptional carbon-rich forests



Sierra Nevada conifers, California

$160 \pm 3 \text{ t ha}^{-1}$

(this research)

Amazon rainforest

$170 \pm 9 \text{ t ha}^{-1}$

(Baker et al. 2004)



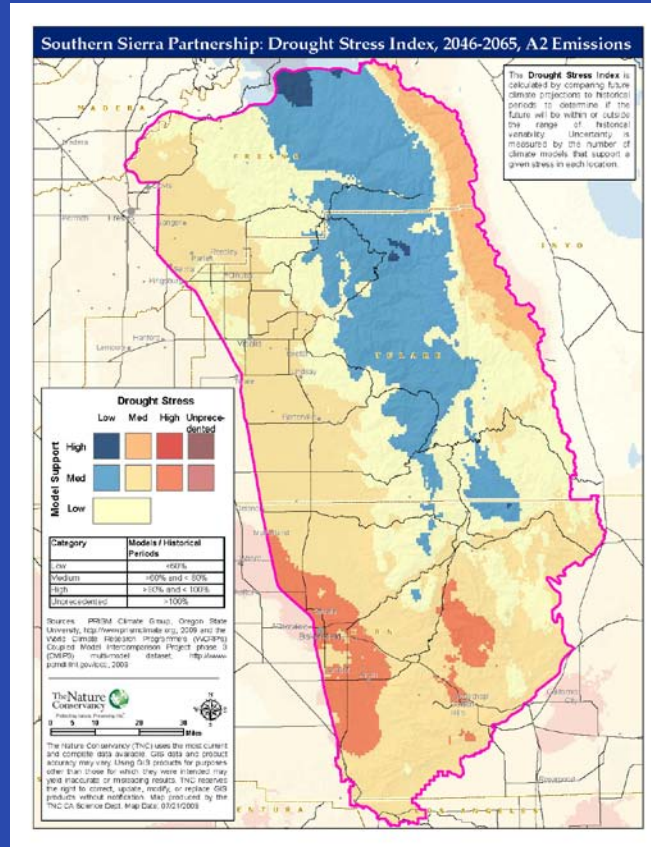
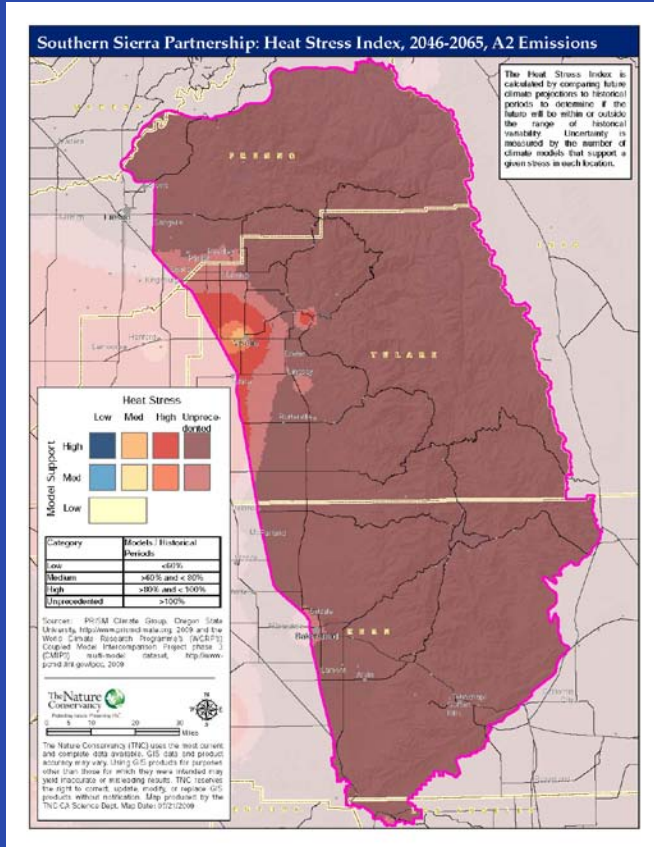
Ambitious ten-year goals

- Protect lands that provide water
- Safeguard healthy forests
- Public policy initiatives
- Enhance sustainable economies
- Adapt to climate change
- Community centered development
- Catalyze generous support

*Over 100,000 acres
prioritized*

\$75-\$100M in private funds to match \$225-\$300M public

Southern Sierra Partnership



A2 emissions scenario (IPCC)

“Ensemble” of 11 climate global climate models

50 year timeframe (2065)

Climate forecast: Dramatic temperature increase of 2.7 – 6.1 F (median 4.9); Precipitation is less certain. Most models predict somewhat drier, but could be wetter or much drier—yet within the historic range of variability.



© Elizabeth Carmel

Northern Sierra Partnership

FEATHER RIVER



LAND TRUST



SIERRA BUSINESS COUNCIL



Protecting nature. Preserving life.™



TRUCKEE & DONNER
LAND TRUST



THE TRUST
for PUBLIC LAND
CONSERVING LAND FOR PEOPLE