

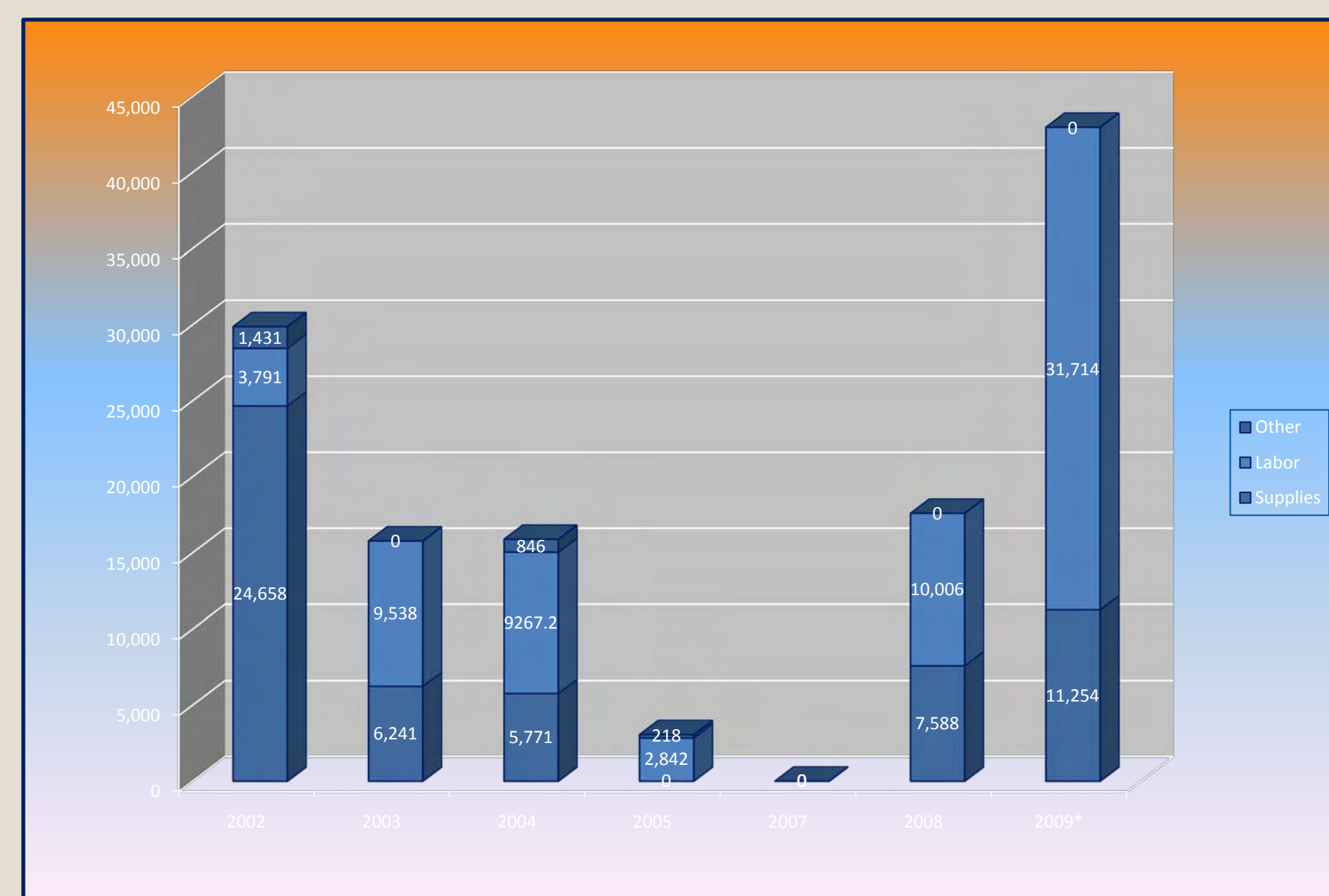
Tulare County WMA Cost-Share Weed Control

Sullins*, J. L.¹, Wright, S. D.², Wilson, K.³, Palmer, E.⁴, Hamlin⁵, R., Blackhurst⁶, E., Yancy, C.⁷, Mills, M⁸.

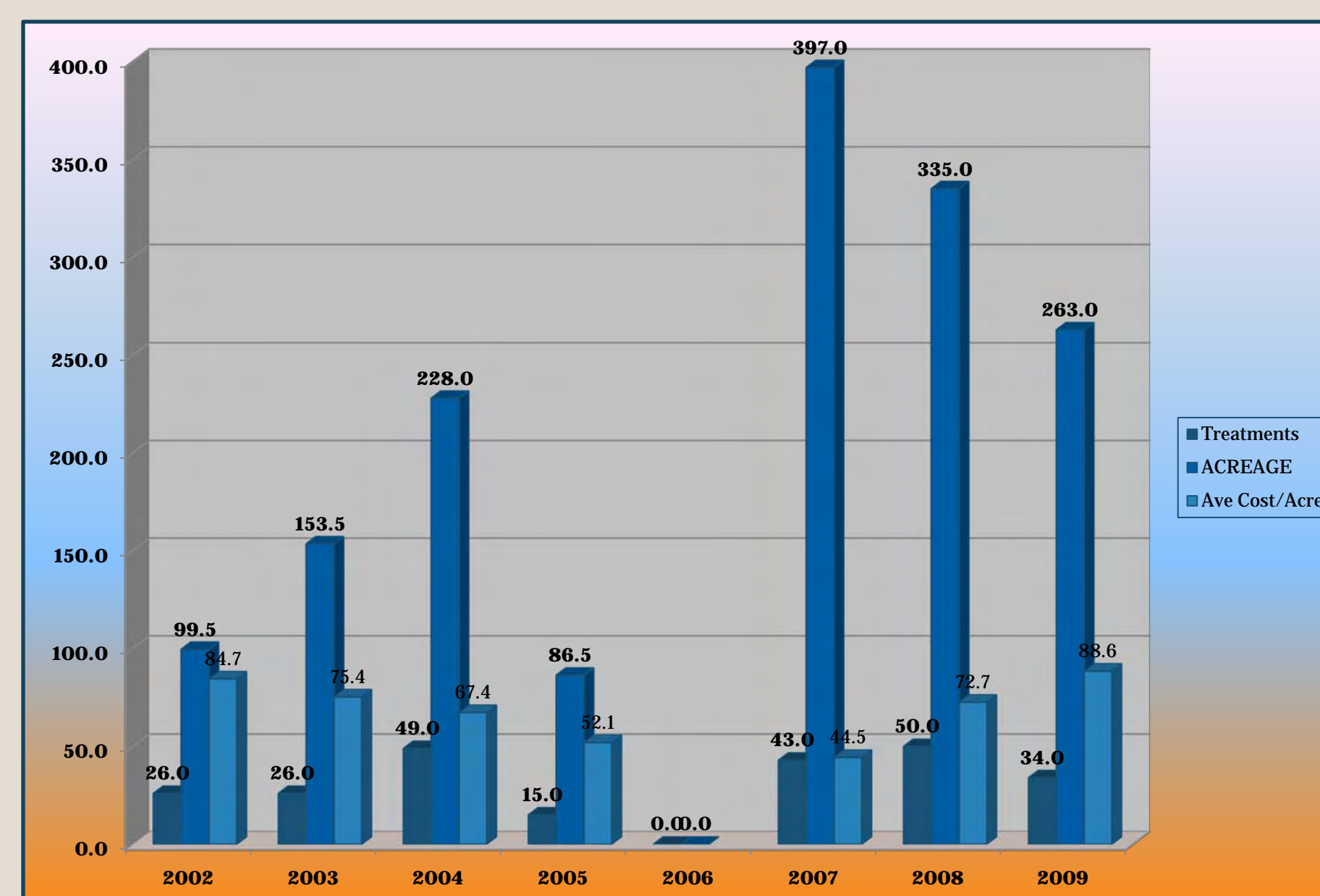
Few noxious weeds have caught the general public's attention as has Yellow starthistle (YST) (*Centaurea solstitialis* L.), in California. Introduced into California in the mid-1800's, YST proliferation is a serious threat to the biodiversity and the productive potential of California's rangelands. In 1985, an estimated 8 million acres were infested, and by 1995 an estimated 12 million acres were infested. YST has continued to rapidly colonize susceptible habitats including an estimated 20,000 acres of Tulare County foothill range. In 1999, Tulare County UC Cooperative Extension, Agricultural Commissioner, and RCD; and USDA NRCS formed the Tulare County Noxious Weed Task Force. YST proliferation raised public awareness of noxious weed issues and the need for control and brought many stakeholders to the task force. This early organization led to an official designation as a Weed Management Area (WMA), bringing together landowners and managers (private, city, county, state, and federal) in the county, to coordinate efforts and expertise against common invasive weed species. The WMA status enabled the task force to coordinate research, education, and outreach efforts across many jurisdictional boundaries and to broaden the focus to address several invasive noxious weeds. Results included securing a \$70,000 three year state grant to develop educational brochures; conduct seminars and weed tours; collaborate in research on control strategies and field demonstrations; population inventory, monitoring and mapping; equipment acquisition and labor for implementing a control program. The WMA provides a structure to coordinate and collaborate in a local successful weed management effort, with key areas of research, education, outreach, inventory, control program, and monitoring.

Funding

CDFA Funding to WMA 2002 – 2009



YST Cost Share Projects 2002 - 2009



Relationship of cost share to treatment and acreage

Research

**Trials conducted
From 1997 thru 2008 to
determine strategies for YST
Control in Rangelands**



Education



**Field Days and
Newsletters**



Control Program



**CDFA Grant
for Equipment**

Brochures

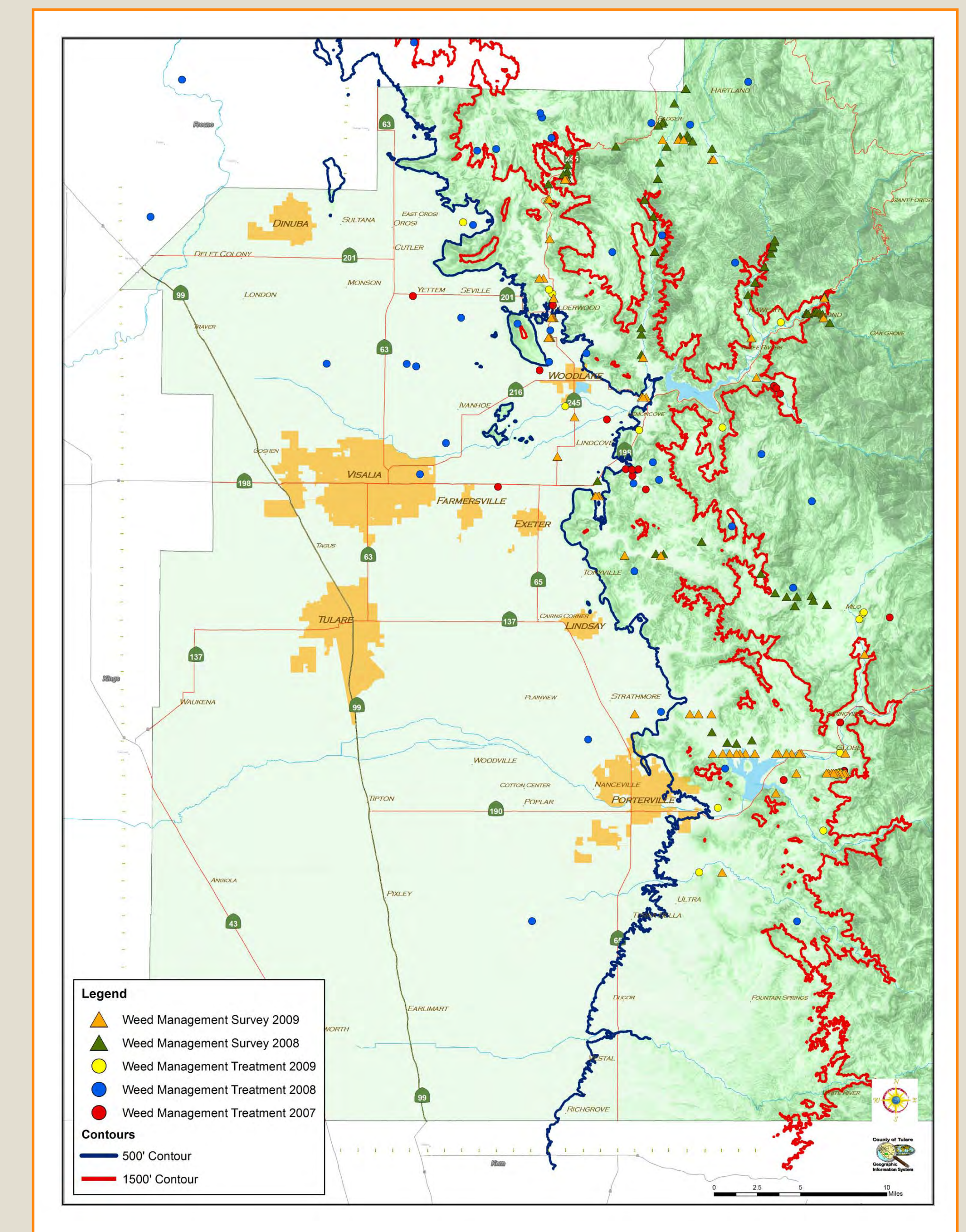


Outreach



**VIP Tours and Speaker
Committee**

Monitoring



**Annual surveys with data
collected with GPS and
mapped by GIS**

^{1,2,5,6,7,8} UC Cooperative Extension Tulare County, 4437 S. Laspina St. Ste. B, Tulare CA 93274, jsullins@ucdavis.edu or sdwright@ucdavis.edu

³ UC Santa Barbara CCS-Biology

⁴ USDA-NRCS, 3530 West Orchard Ct., Visalia, CA 93277 Elizabeth.Palmer@ca.usda.gov