

Ecosystem Protection through Watershed-level Prioritization on Catalina Island

Denise Knapp, Plant Ecologist
and
John Knapp, Invasive Plant Program Manager



CATALINA ISLAND CONSERVANCY

"...to be a responsible steward of its lands through a balance of conservation, education, and recreation."

Catalina Island



"...to be a responsible steward of its lands through a balance of conservation, education, and recreation."

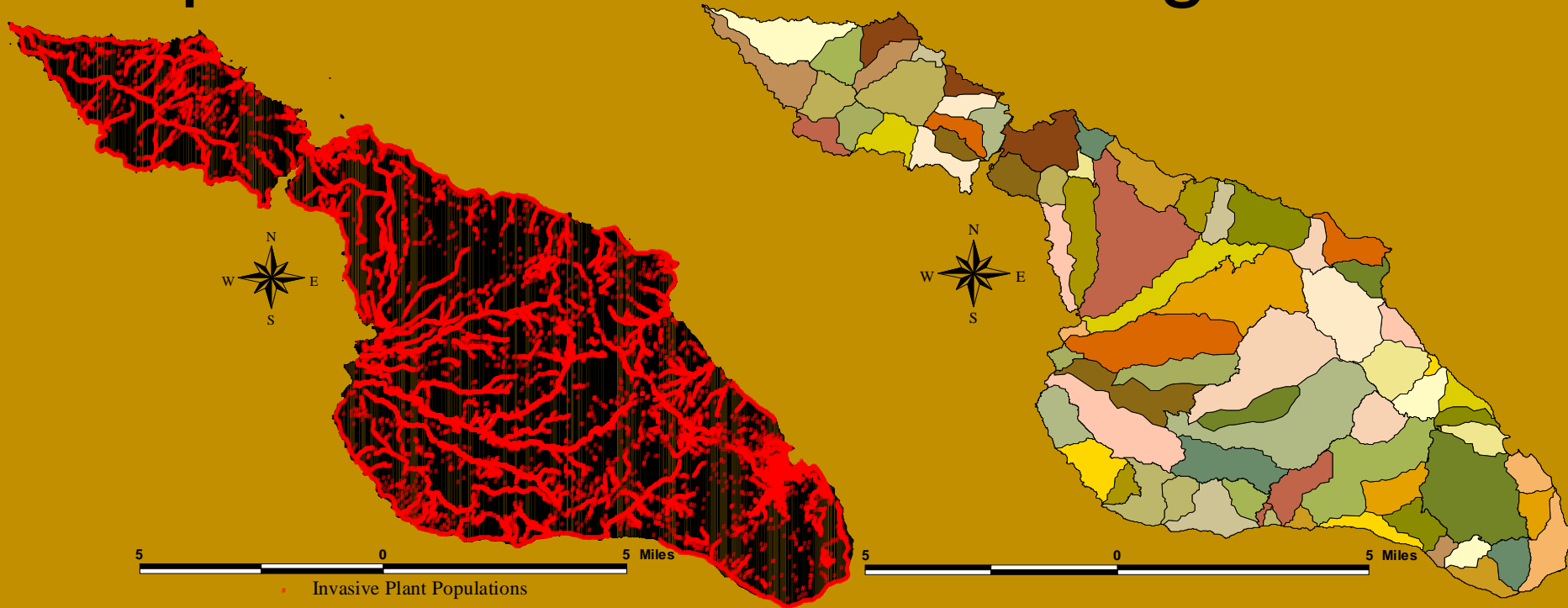
Why are you at Cal-IPC?



Gratuitous Beauty Shots

"...to be a responsible steward of its lands through a balance of conservation, education, and recreation."

Species versus Site Management



- 76 invasive plant species
- 37,208 populations mapped
- Each species ranked for priority of control
- 76 watersheds
- 48,000 acres
- Each watershed ranked for priority of protection

"...to be a responsible steward of its lands through a balance of conservation, education, and recreation."

Rare Plant Species Ranking

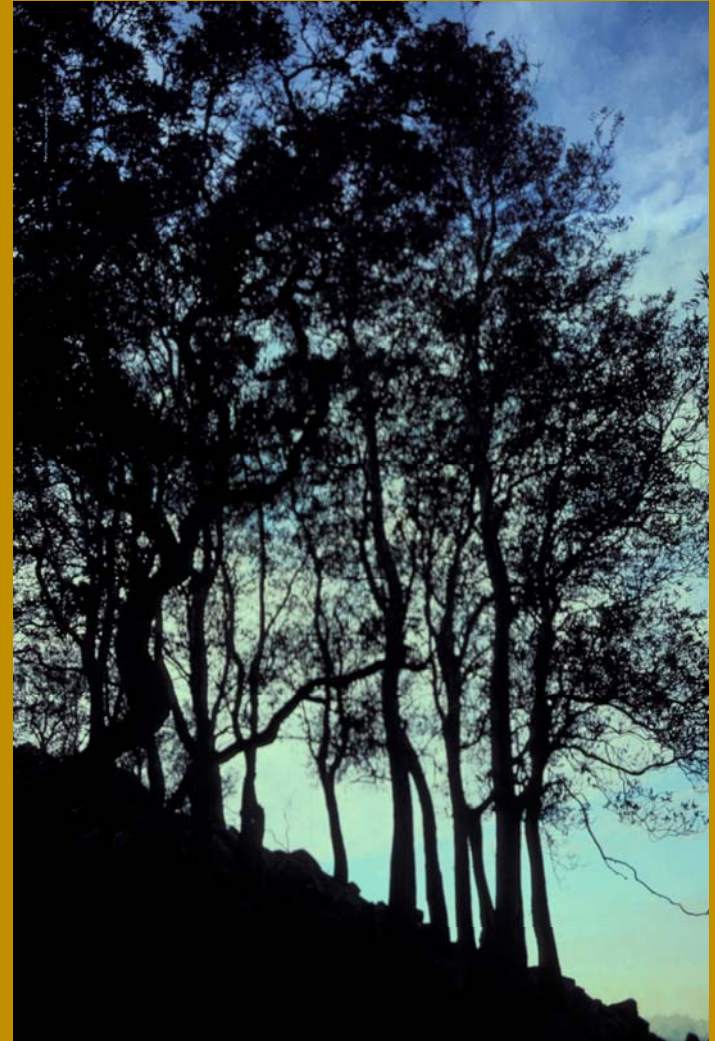
- Endemic
 - Catalina
 - Channel Island
 - Island (incl. Mexican islands)
 - Characteristic island species
- Listing
 - USFWS, CDFG, NatureServe, CNPS
- Frequency and Trend
 - 1924 Millspaugh and Nuttall Flora
 - 1967 Thorne Flora
 - 1996 - 2005 Conservancy
 - 2006 Junak and Hoefs Flora



"...to be a responsible steward of its lands through a balance of conservation, education, and recreation."

Vegetation Community Ranking

- % of Island
- Listing
 - NatureServe- series type
 - CNDDDB- rare habitat
- Geographic limit (non-endemic)
- Endemic Habitat
- Total Ranking of Dominants
- Special Importance to Wildlife



"...to be a responsible steward of its lands through a balance of conservation, education, and recreation."

Wildlife Species Ranking

- Listed
 - NatureServe- natural heritage species
 - CNDDDB- rare species
- Endemic
 - Catalina Island
 - Channel Islands
- Abundance
 - Rare
 - Infrequent
 - Common



Where's my
WEED
WRENCH!?!

"...to be a responsible steward of its lands through a balance of conservation, education, and recreation."

Challenges and Adjustments

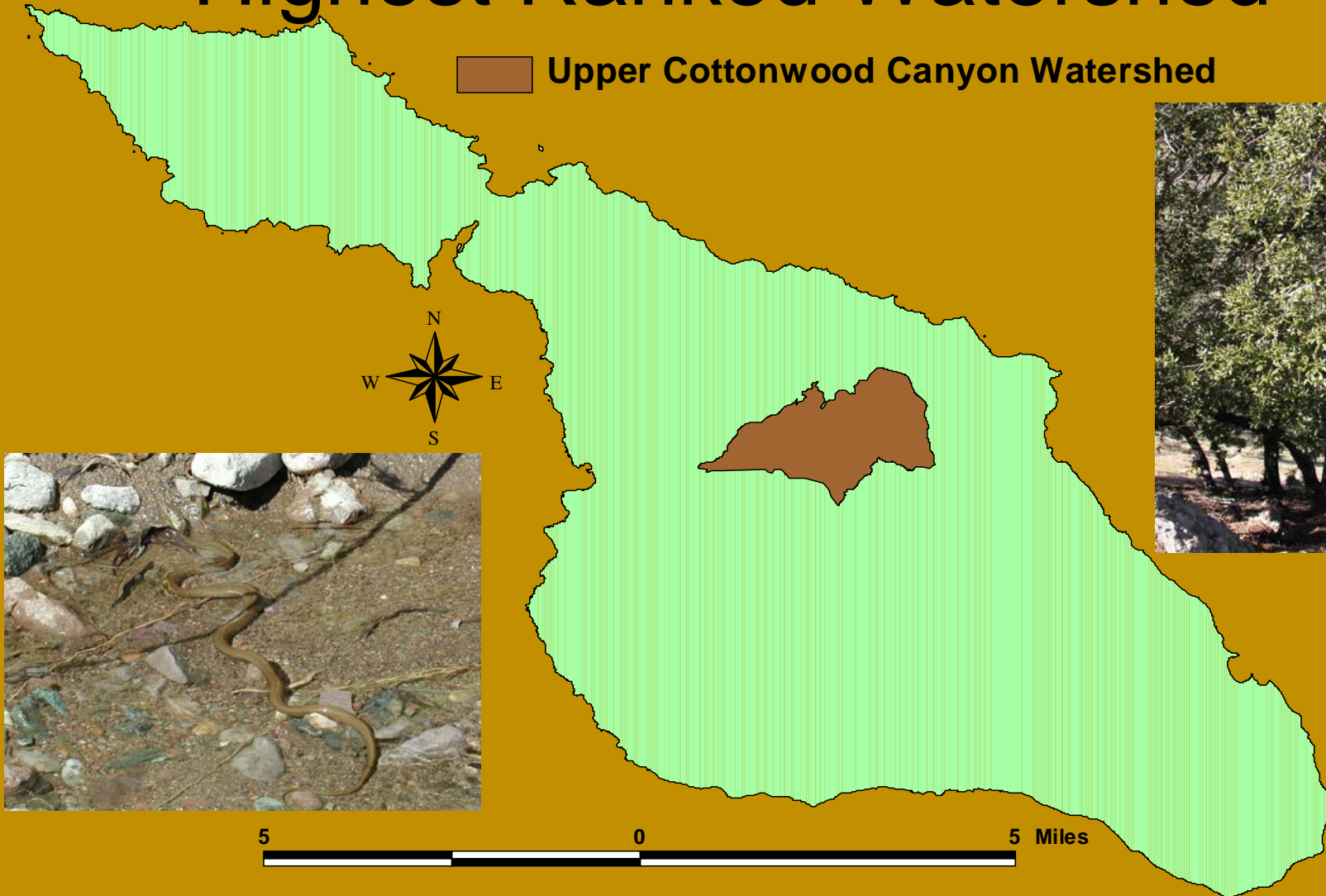
- Wildlife Data sets
 - No data for some species
 - Limited or selective coverage
- Intuition & Assumptions
 - Endangered species
 - “That can’t be right!”
 - “Are you sure?”
- Correction Factors
 - Watershed acreage
 - Balance



"...to be a responsible steward of its lands through a balance of conservation, education, and recreation."

Highest Ranked Watershed

 Upper Cottonwood Canyon Watershed



"...to be a responsible steward of its lands through a balance of conservation, education, and recreation."

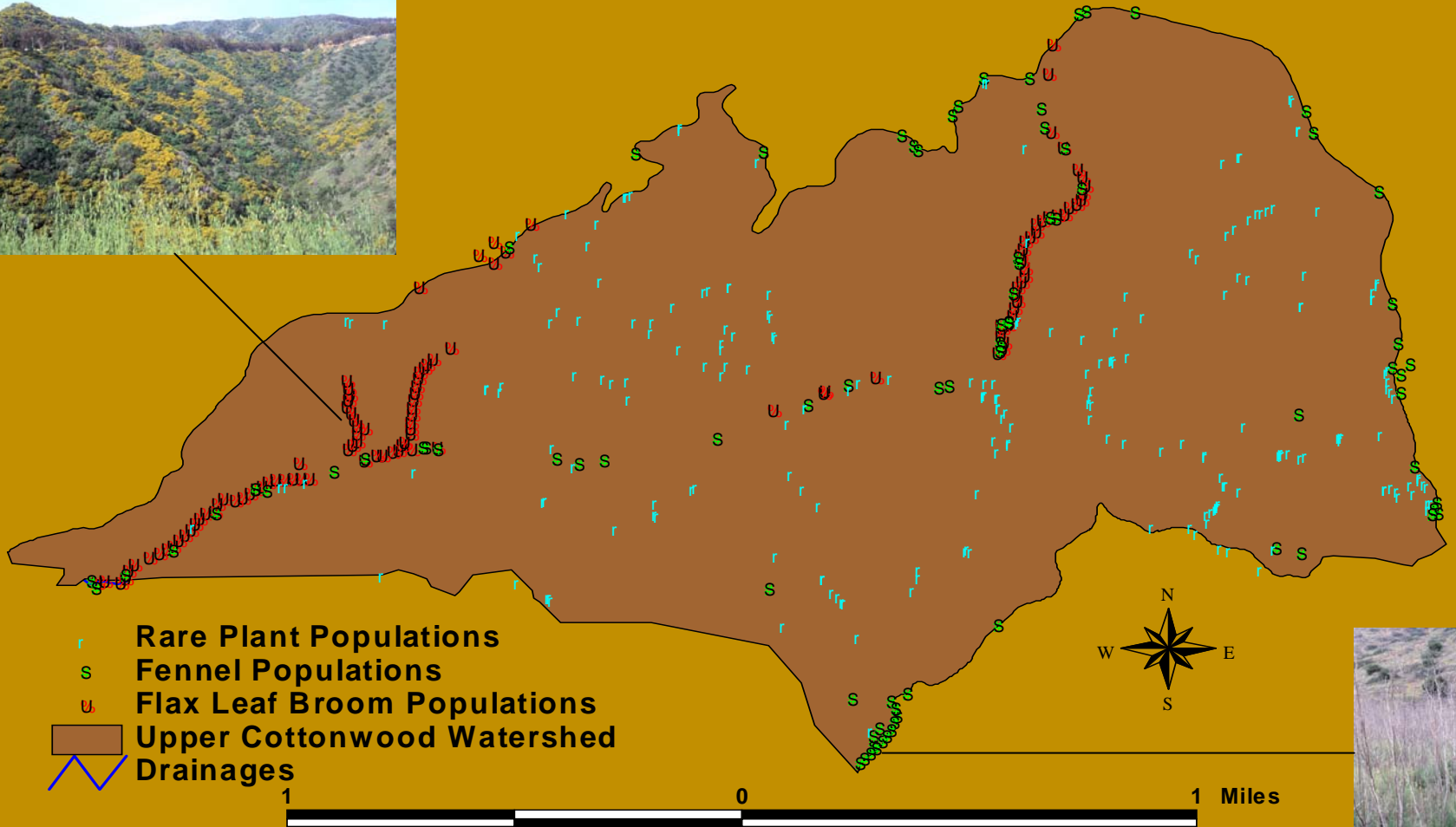
Watershed Plan

- Invasive Species
- Wildfire
- Erosion
- Water quality
- Risk Assessment
- Research
- Restoration
- Game management
- Education



"...to be a responsible steward of its lands through a balance of conservation, education, and recreation."

Upper Cottonwood Canyon Watershed



"...to be a responsible steward of its lands through a balance of conservation, education, and recreation."

Take Home Message

- Identifying conservation values/indicators, and what threatens them is important to:
 - holistically manage a site
 - improve control efficacy
 - raise awareness
 - ensure funding and support



"...to be a responsible steward of its lands through a balance of conservation, education, and recreation."

Acknowledgements

- Scott Clemens- State Wildlife Conservation Board
- Mary Small- State Coastal Conservancy
- John Ehkoff- California Department of Fish and Game
- Ken Corey- U.S. Fish and Wildlife Service
- Claire Thorpe- National Fish and Wildlife Foundation



CATALINA ISLAND CONSERVANCY

"...to be a responsible steward of its lands through a balance of conservation, education, and recreation."

Questions?



"...to be a responsible steward of its lands through a balance of conservation, education, and recreation."