

# WHIPPET PRIORITIZATION TOOL DEMONSTRATION

---

*Cal-IPC Symposium 2015*

*Gina Darin, CA DWR*

*Elizabeth Brusati, Cal-IPC*

*Co-Facilitators*



# WHIPPET

BETA

BETA

## WHIPPET helps land managers prioritize invasive plant populations:

- ✓ **Ranks** based on impacts, invasiveness, and feasibility of control.
- ✓ **Integrates** species data with spatial analysis.
- ✓ **Allows** users to select species and area to analyze.
- ✓ **Uses** data from the Cal-IPC Inventory, Calflora, and other sources.

Start by logging in with your Calflora e-mail address and password.

Calflora e-mail address

Calflora password

- [Log In to WHIPPET](#)
- [Calflora Sign Up](#)
- [Read User Guide](#)
- [WHIPPET for Desktop](#)





# WHIPPET

BETA

BETA

## Online WHIPPET User Guide

Table of contents: [Introduction](#), [Steps](#), [Adjust WHIPPET Run Settings](#), [Adjust Population Variables](#), [Run WHIPPET!](#), [Acknowledgments](#), [Additional Information](#), [Appendix A: Generating Custom GIS Scoring Data](#)

[Download PDF](#)

### Introduction

WHIPPET is the **Weed Heuristics: Invasive Population Prioritization for Eradication Tool**. It prioritizes weed infestations for eradication based on potential impact, potential spread, and feasibility of control. WHIPPET may help land managers identify a high-priority population of an otherwise lower-priority species, and, conversely, exclude a low-priority population of a high-priority species. This will enhance manager efficiency and provide greater ecological protection. It was originally developed to prioritize populations of California's A-rated noxious weeds at a regional (multi-county) scale (Skurka Darin 2008, Skurka Darin et al. 2011). The original version of WHIPPET required a user to research information on the impacts and spread of each species and score those species based on the WHIPPET criteria. It also required access to ArcGIS software. The California Invasive Plant Council has developed this online version of WHIPPET to make the tool accessible to more users. This version takes advantage of web-based GIS and existing databases of information like the Cal-IPC Inventory. (More customization is possible with the desktop version; contact [Gina Darin](#) for more information.)

WHIPPET provides results in the form of a ranked list of populations, with rankings based on species and population data. It is based on a set of weighted criteria in three categories (see diagram below). Online WHIPPET draws from a species database with information on 200 invasive plants in California. WHIPPET emphasizes cost-effective eradication of risky populations; therefore, small populations, outliers, and species that are easy to control receive higher scores than large populations, abundant species, or species whose biology makes them difficult to control. For population locations, online WHIPPET relies on data from the Calflora database ([www.calflora.org](#)). At this time, WHIPPET contains information only for the plants on the California Invasive Plant Council Inventory ([www.cal-ipc.org/paf](#)). In the future, with additional funding, we hope to build in the ability for users to include information on additional species.

Questions on WHIPPET? Please contact [mapping@cal-ipc.org](mailto:mapping@cal-ipc.org) or read these [Frequently Asked Questions](#).

### Disclaimer

WHIPPET online is for California only (for now). If you're working near the state border, be aware that it will not capture populations on the other side. You may want to consider that in your own post-processing.

You may have factors in your project area that are not included in the WHIPPET calculations. You need to look at the WHIPPET results and decide if they make sense. WHIPPET offers suggestions, but is not a prescription.



# WHIPPET

User Guide

New Session

Load Session

Save Session

Log Out

BETA

BETA

**Whippet Run Settings** ✕

**1. Records to include**

- Use published California data
- Use my unpublished data
- Use published + my unpublished data

**2. Select species**  
Hold down control to select more than one  
Click again on species to deselect

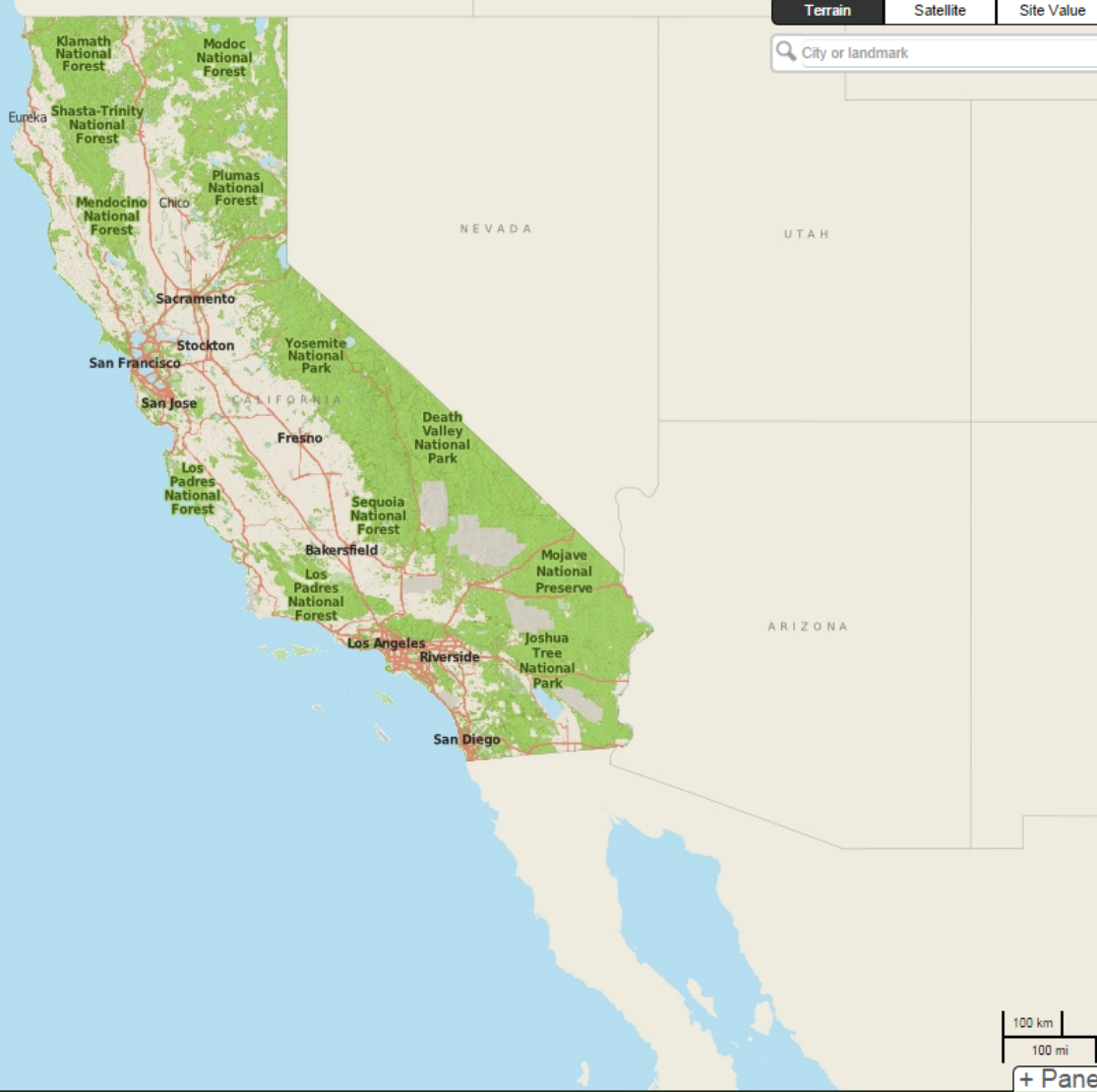
- Acacia dealbata
- Acacia melanoxylon
- Acroptilon repens
- Aegilops triuncialis
- Ageratina adenophora
- Agrostis avenacea
- Agrostis stolonifera
- Ailanthus altissima
- Alhagi maurorum
- Alternanthera philoxeroides

**3. Area of interest**  
(select one option below) ▾

**4. Custom Site Value data (optional)** ⓘ  
Choose File No file chosen

**5. Custom Roads/Trails data (optional)** ⓘ  
Choose File No file chosen

Get records Cancel





# WHIPPET

User Guide

New Session

Load Session

Save Session

Log Out

BETA

BETA

Terrain Satellite Site Value

City or landmark

**Whippet Run Settings**

**1. Records to include**

- Use published California data
- Use my unpublished data
- Use published + my unpublished data

**2. Select species**  
Hold down control to select more than one  
Click again on species to deselect

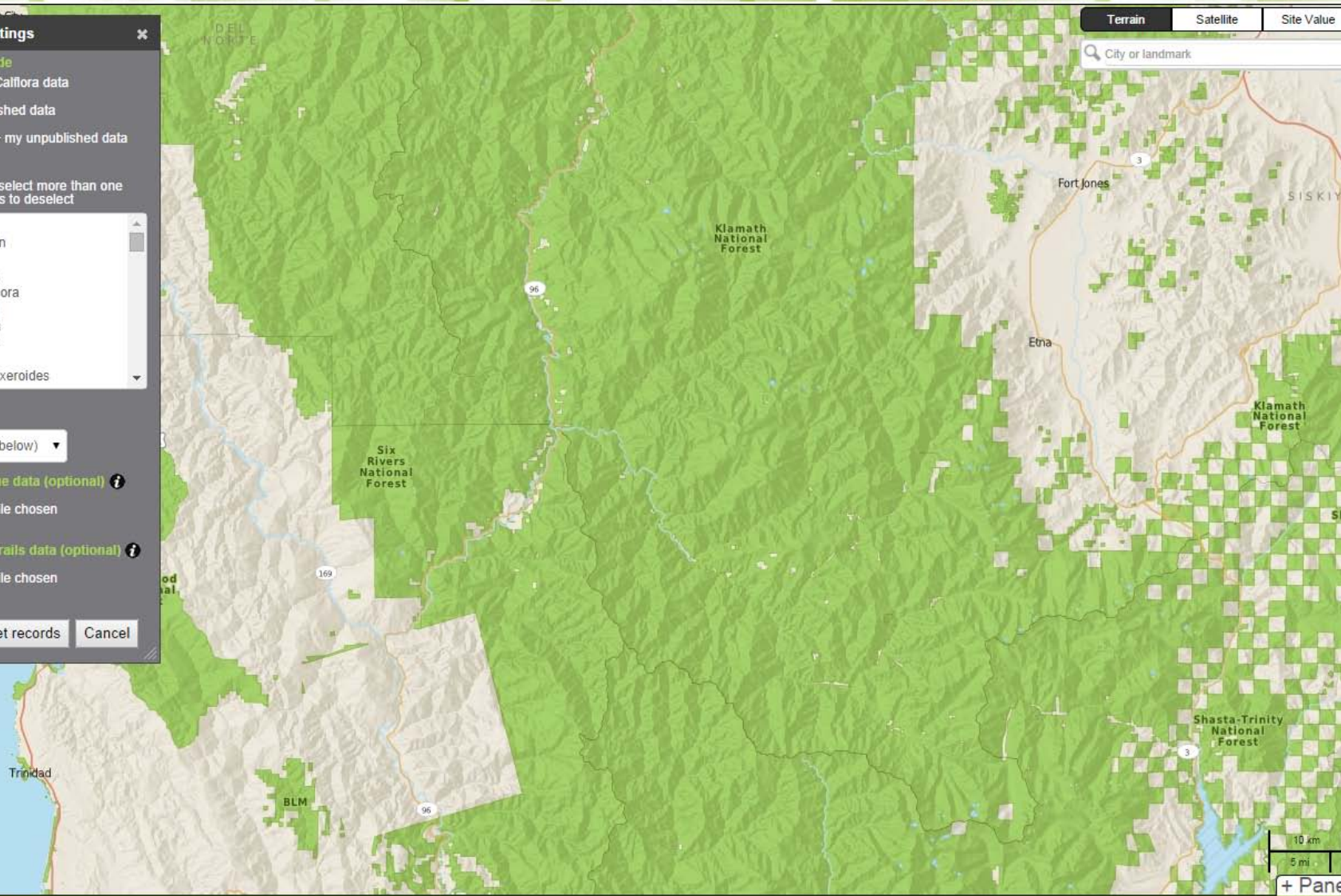
- Acacia dealbata
- Acacia melanoxylon
- Acroptilon repens
- Aegilops triuncialis
- Ageratina adenophora
- Agrostis avenacea
- Agrostis stolonifera
- Ailanthus altissima
- Alhagi maurorum
- Alternanthera philoxeroides

**3. Area of interest**  
(select one option below)

**4. Custom Site Value data (optional)**  
Choose File No file chosen

**5. Custom Roads/Trails data (optional)**  
Choose File No file chosen

Get records Cancel





# WHIPPET

User Guide

New Session

Load Session

Save Session

Log Out

BETA

BETA

**Draw your area of interest** ✕ ✕

Click to lay down a point.  
Double-click to finalize your shape.  
When you're done, click the button.

Select Drawn Area Cancel data

Hold down control to select more than one  
Click again on species to deselect

- Hordeum marinum
- Hordeum murinum
- Hydrilla verticillata
- Hypericum canariense
- Hypericum perforatum
- Hypochaeris glabra
- Hypochaeris radicata
- Ilex aquifolium
- Iris pseudacorus
- Isatis tinctoria

3. Area of interest

Draw an area freehand ▾

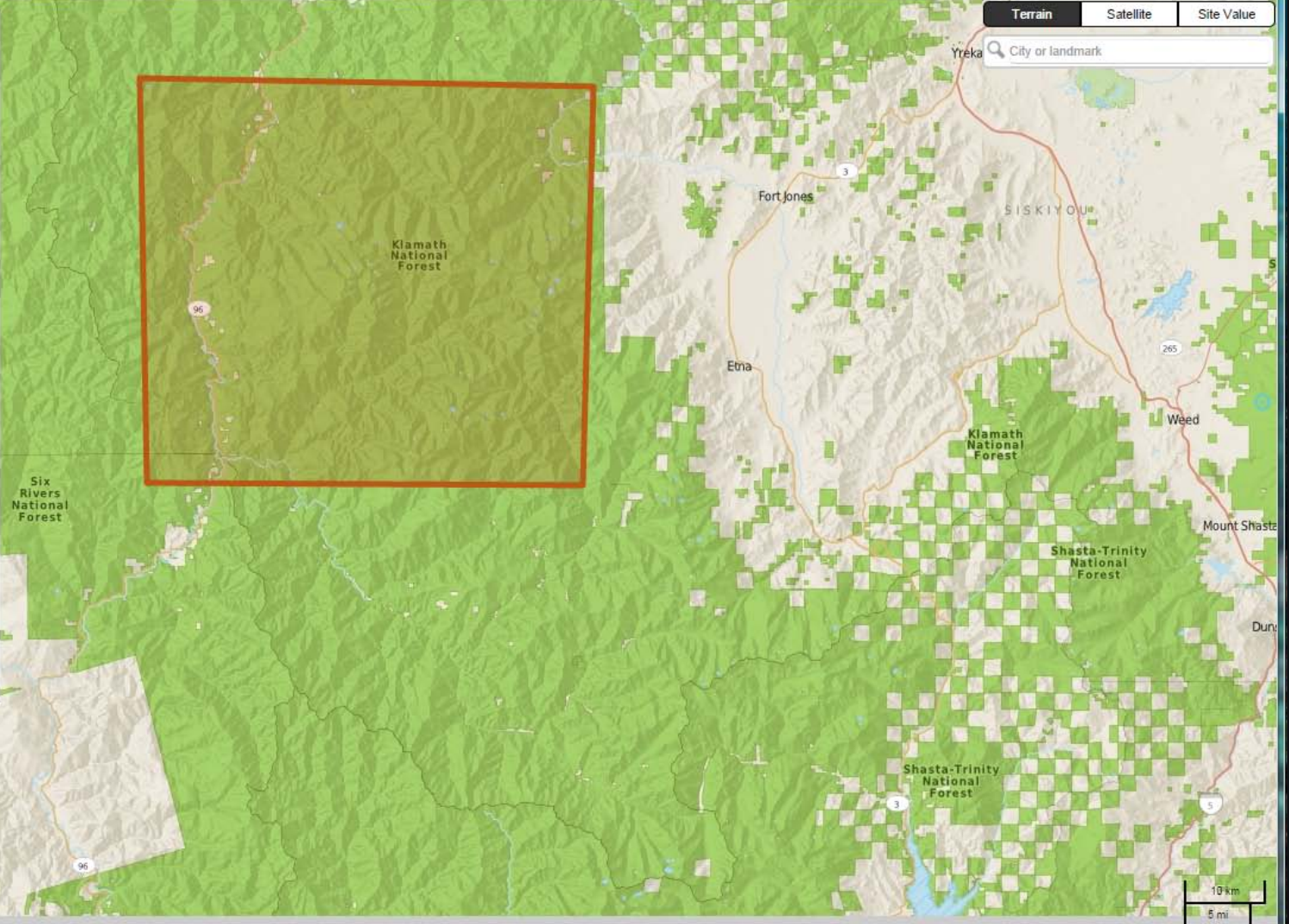
4. Custom Site Value data (optional) ⓘ

Choose File No file chosen

5. Custom Roads/Trails data (optional) ⓘ

Choose File No file chosen

Get records Cancel



+ Panel

## WHIPPET

User Guide

New Session

Load Session

Save Session

Log Out

BETA

BETA



## Adjust population variables



## Step 1 of 5

The first step is to select the area and species of interest. You have already done this, and your results are showing in the table at the bottom of the screen.

If the table of populations is not showing, click the +Panel button in the lower right corner.

The default values in the table are calculated from various conservation and land cover databases, but your local knowledge may lead you to change some of the ratings.

These next panels will walk you through these ratings, allowing you to change them for any or all populations.

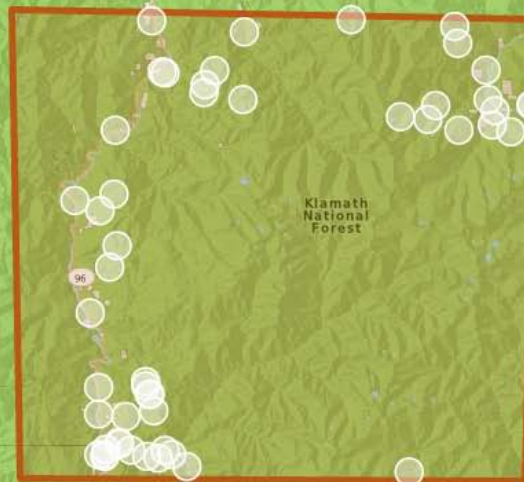
Next &gt;&gt;

Terrain

Satellite

Site Value

City or landmark

Found 50 populations of *Carduus pycnocephalus*, *Centaurea maculosa*, *Isatis tinctoria*

Check All

Check None

&lt;&lt; Prev

Next &gt;&gt;

Run WHIPPET

Species	Observer, Date, RecordID	Site Value	Accessibility	Pop'n Size	Herbicide?
<input checked="" type="checkbox"/> Isatis tinctoria	Marla Knight 2013-05-01 wb1257-41	High (6)	Moderate (3)	> 1-10 ac (3)	Yes
<input checked="" type="checkbox"/> Isatis tinctoria	Marla Knight 2013-05-01 wb1255-436	Low (1)	Moderate (3)	0.1 - 1 ac (6)	Yes

# WHIPPET

User Guide

New Session

Load Session

Save Session

Log Out

BETA

BETA

Terrain Satellite Site Value

City or landmark

Adjust population variables

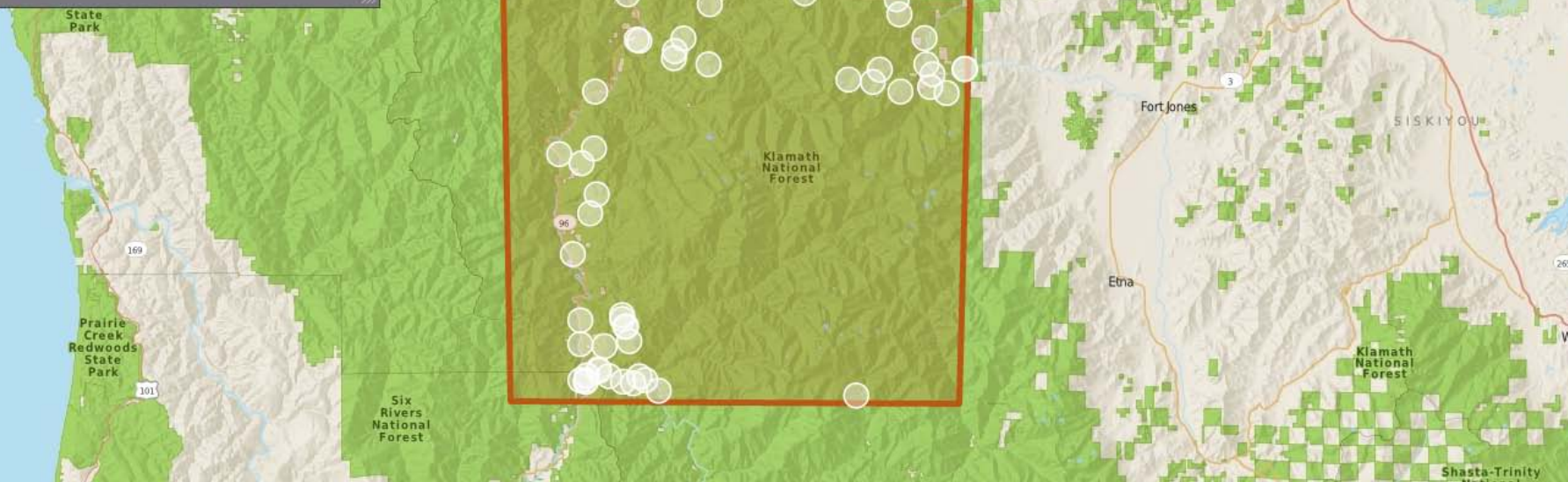
## Ready to run WHIPPET

If you have any final adjustments to make to the populations listed below, go ahead.

When you're done, click the link below.

[Click here to run WHIPPET](#)

<< Back



Found 50 populations of *Carduus pycnocephalus*, *Centaurea maculosa*, *Isatis tinctoria*

Check All Check None

<< Prev Next >>

Run WHIPPET

Species	Observer, Date, RecordID	Site Value	Accessibility	Pop'n Size	Herbicide?
<input checked="" type="checkbox"/> Isatis tinctoria	Marla Knight 2013-05-01 wb1257-41	High (6)	Moderate (3)	> 1-10 ac (3)	Yes
<input checked="" type="checkbox"/> Isatis tinctoria	Marla Knight 2013-05-01 wb1255-436	Low (1)	Moderate (3)	0.1 - 1 ac (6)	Yes



File Home Insert Page Layout Formulas Data Review View Acrobat

Clipboard: Paste, Cut, Copy, Format Painter

Font: Calibri, 11, Bold, Italic, Underline, Text Color, Background Color

Alignment: Wrap Text, Merge & Center

Number: General, \$, %, .00, .00

Styles: Conditional Formatting, Format as Table, Cell Styles

Cells: Insert, Delete, Format

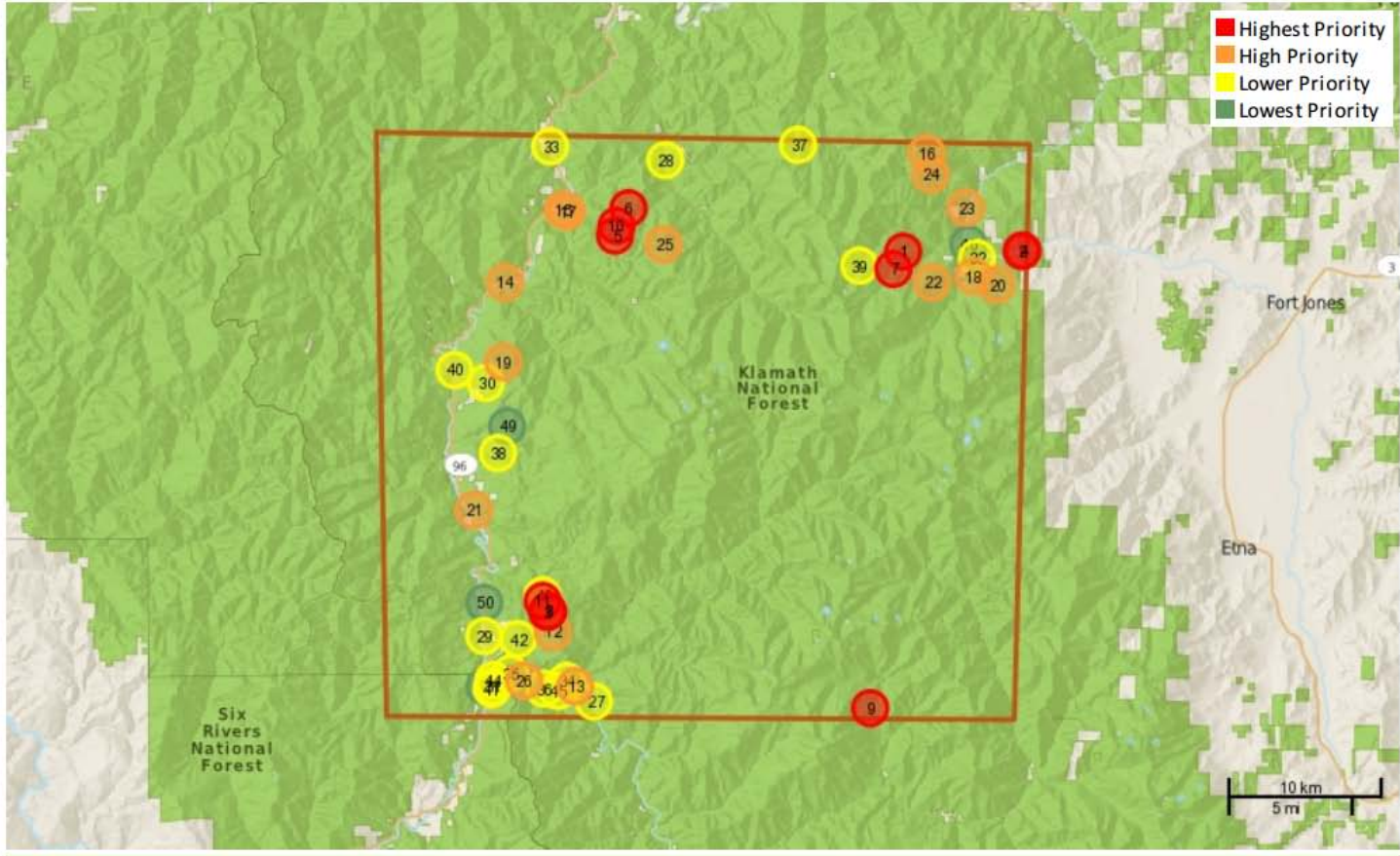
Editing: AutoSum, Fill, Clear, Sort & Filter, Find & Select

C51 = wb1258-238

	A	B	C	D	E	F	G	H	I	J	K	L
1	Map ID	Total Score	Record ID	Species	Common Names	Date	Observer	Latitude	Longitude	Gross Acreage	Feasibility Score	Impact Score
2	1	6.393	<a href="#">wb1238-362</a>	Centaurea maculosa	spotted knapweed	2010-08-16	Marla Knight	41.64096822	-123.112268	0.0938 Acres	5.677	8.068
3	2	5.951	<a href="#">wb1255-440</a>	Isatis tinctoria	dyer's woad	2003-07-03	John McRae	41.3844754	-123.4805201	0.01 Acres	5.081	8.068
4	3	5.899	<a href="#">xr180509</a>	Isatis tinctoria	dyer's woad	1990-06-21	Poore	41.3752	-123.5008	Not given	5.081	8.068
5	4	5.865	<a href="#">wb1258-478</a>	Isatis tinctoria	dyer's woad	2012-05-22	Marla Knight	41.53169186	-123.4824616	0.1116 Acres	4.069	8.068
6	5	5.813	<a href="#">wb1259-127</a>	Isatis tinctoria	dyer's woad	2002-09-01	John McRae	41.42565147	-123.5009147	0.7 Acres	4.069	8.068
7	6	5.749	<a href="#">wb1237-308</a>	Centaurea maculosa	spotted knapweed	2003-08-19	Marla Knight	41.36632014	-123.4129147	1.8726 Acres	3.906	8.068
8	7	5.62	<a href="#">wb1257-210</a>	Isatis tinctoria	dyer's woad	2006-06-23	Marla Knight	41.69135341	-123.3554945	1.8505 Acres	3.31	8.068
9	8	5.62	<a href="#">wb1259-325</a>	Isatis tinctoria	dyer's woad	2004-03-29	John McRae	41.405679	-123.5009272	1.0074 Acres	3.31	8.068
10	9	5.567	<a href="#">wb1256-55</a>	Isatis tinctoria	dyer's woad	2009-06-24	Marla Knight	41.55783466	-123.499619	1.0581 Acres	3.31	8.068
11	10	5.553	<a href="#">wb1259-471</a>	Isatis tinctoria	dyer's woad	2007-04-15	John McRae	41.37535077	-123.4941652	0.889 Acres	4.069	8.068
12	11	5.515	<a href="#">wb1256-442</a>	Isatis tinctoria	dyer's woad	2006-06-28	Marla Knight	41.63260071	-123.1053379	1.4432 Acres	3.31	8.068
13	12	5.515	<a href="#">wb1256-274</a>	Isatis tinctoria	dyer's woad	2010-06-30	Marla Knight	41.69963039	-123.4479627	2.4716 Acres	3.31	8.068
14	13	5.501	<a href="#">wb1255-434</a>	Isatis tinctoria	dyer's woad	2009-07-01	Marla Knight	41.3785279	-123.4346528	0.1044 Acres	4.069	8.068
15	14	5.501	<a href="#">wb1257-265</a>	Isatis tinctoria	dyer's woad	2004-03-29	John McRae	41.38325284	-123.4800733	0.2168 Acres	4.069	8.068
16	15	5.489	<a href="#">wb1237-73</a>	Centaurea maculosa	spotted knapweed	2008-10-28	Marla Knight	41.37400376	-123.4528756	8.6744 Acres	3.906	8.068
17	16	5.482	<a href="#">wb1258-64</a>	Isatis tinctoria	dyer's woad	2003-08-21	Marla Knight	41.700502	-123.24894	0.098 Acres	5.081	6
18	17	5.462	<a href="#">wb1255-67</a>	Isatis tinctoria	dyer's woad	2009-06-02	Marla Knight	41.51564401	-123.4899	2.0249 Acres	3.31	8.068
19	18	5.41	<a href="#">wb1255-181</a>	Isatis tinctoria	dyer's woad	2002-07-10	Marla Knight	41.62810232	-123.1996988	4.6015 Acres	3.31	8.068
20	19	5.368	<a href="#">wb1257-394</a>	Isatis tinctoria	dyer's woad	2009-05-22	Marla Knight	41.56547216	-123.5245996	19.9488 Acres	2.804	8.068
21	20	5.36	<a href="#">wb1259-167</a>	Isatis tinctoria	dyer's woad	2012-05-15	John McRae	41.37386362	-123.4949376	1.0027 Acres	3.31	8.068
22	21	5.263	<a href="#">wb1255-205</a>	Isatis tinctoria	dyer's woad	2007-04-10	Marla Knight	41.40385881	-123.4737533	73.9611 Acres	2.804	8.068
23	22	5.255	<a href="#">wb1256-447</a>	Isatis tinctoria	dyer's woad	2004-03-29	John McRae	41.43004914	-123.4540897	1.0868 Acres	3.31	8.068
24	23	5.255	<a href="#">wb1255-488</a>	Isatis tinctoria	dyer's woad	2002-07-10	Marla Knight	41.37920126	-123.4936978	1.6851 Acres	3.31	8.068
25	24	5.238	<a href="#">wb1237-346</a>	Centaurea maculosa	spotted knapweed	2002-02-24	John McRae	41.37267066	-123.4416122	14.8228 Acres	3.4	8.068
26	25	5.084	<a href="#">wb1259-337</a>	Isatis tinctoria	dyer's woad	2004-03-29	John McRae	41.40809896	-123.4458811	0.6902 Acres	4.069	6
27	26	5.004	<a href="#">wb1258-255</a>	Isatis tinctoria	dyer's woad	2002-07-11	Marla Knight	41.37536339	-123.4278947	12.5893 Acres	2.804	8.068
28	27	4.88	<a href="#">wb1257-260</a>	Isatis tinctoria	dyer's woad	2008-05-01	Marla Knight	41.61801216	-123.4842768	14.2242 Acres	2.804	6
29	28	4.877	<a href="#">wb1256-39</a>	Isatis tinctoria	dyer's woad	2006-07-07	Marla Knight	41.66160835	-123.4373975	0.3571 Acres	4.069	6
30	29	4.843	<a href="#">wb1258-412</a>	Isatis tinctoria	dyer's woad	2005-06-16	Marla Knight	41.69547717	-123.1455604	0.098 Acres	5.081	4.449
31	30	4.772	<a href="#">wb1257-28</a>	Isatis tinctoria	dyer's woad	2006-07-07	Marla Knight	41.66067402	-123.4347202	0.384 Acres	4.069	6
32	31	4.733	<a href="#">wb1256-34</a>	Isatis tinctoria	dyer's woad	2013-05-01	Marla Knight	41.62182461	-123.1080235	1.2609 Acres	3.31	6
33	32	4.733	<a href="#">wb1258-237</a>	Isatis tinctoria	dyer's woad	2009-06-18	Marla Knight	41.57021304	-123.485608	1.7996 Acres	3.31	6
34	33	4.733	<a href="#">wb1255-454</a>	Isatis tinctoria	dyer's woad	2013-05-01	Marla Knight	41.61677732	-123.0895684	3.0046 Acres	3.31	6
35	34	4.733	<a href="#">wb1255-65</a>	Isatis tinctoria	dyer's woad	2009-06-02	Marla Knight	41.48143929	-123.5093238	2.4415 Acres	3.31	6
36	35	4.681	<a href="#">wb1257-41</a>	Isatis tinctoria	dyer's woad	2013-05-01	Marla Knight	41.61805565	-123.1413959	6.226 Acres	3.31	6
37	36	4.679	<a href="#">wb1237-368</a>	Centaurea maculosa	spotted knapweed	2003-04-21	Marla Knight	41.66284373	-123.1142945	0.104 Acres	4.665	4.449
38	37	4.627	<a href="#">wb1238-49</a>	Centaurea maculosa	spotted knapweed	2005-10-11	Marla Knight	41.68284592	-123.1424671	0.1067 Acres	4.665	4.449



### 2014 Symposium Discussion Demo Prioritized Eradication Targets



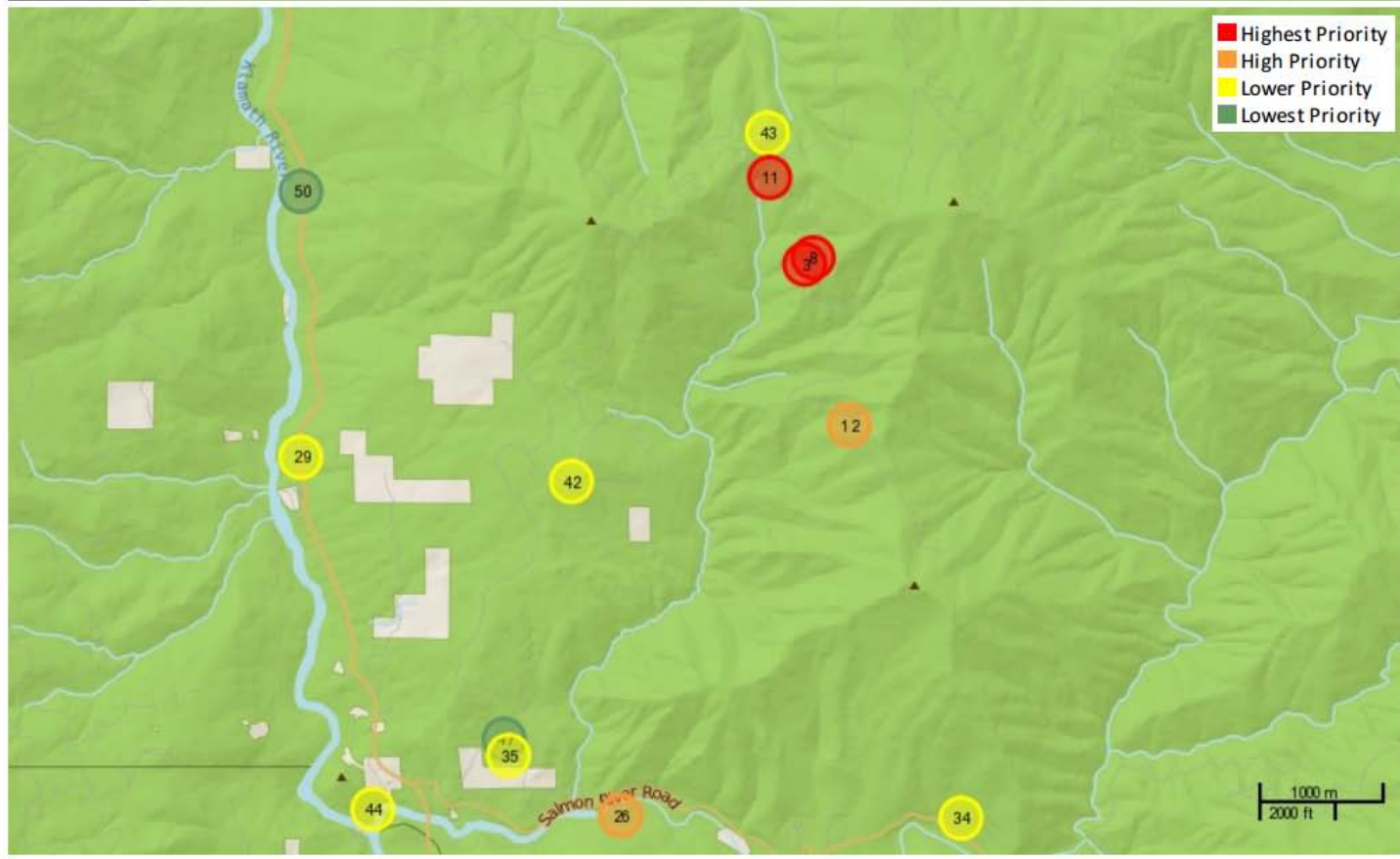
This report was created on Oct 1, 2014 @ 10:19 am using [WHIPPET](#) 1 © 2014 California Invasive Plant Council, [cal-ipc.org](#)



### 2014 Symposium Discussion Demo Prioritized Eradication Targets



### 2014 Symposium Discussion Demo Prioritized Eradication Targets



This report was created on Oct 1, 2014 @ 10:21 am using [WHIPPET](#)



### 2014 Symposium Discussion Demo Prioritized Eradication Targets



SAN DIEGO  
WILDLIFE REFUGE

---

LIVE DEMO



# SDNWR less abundant spp Prioritized Eradication Targets





SDNWR less abundant spp  
Prioritized Eradication Targets

Map ID	Total Score	Species	CalFlora ID	Observed	Herbicide?
1	7.765	<a href="#">Tamarix ramosissima</a>	<a href="#">wb786-17</a>	Giessow/Roth, 2007-06-14	Yes
2	7.608	<a href="#">Cortaderia selloana</a>	<a href="#">wb845-433</a>	Giessow/Roth, 2007-06-14	Yes
3	7.558	<a href="#">Tamarix ramosissima</a>	<a href="#">wb786-25</a>	Giessow/Roth, 2007-06-14	Yes
4	7.558	<a href="#">Tamarix ramosissima</a>	<a href="#">wb786-23</a>	Giessow/Roth, 2007-06-14	Yes
5	7.558	<a href="#">Tamarix ramosissima</a>	<a href="#">wb786-20</a>	Giessow/Roth, 2007-06-14	Yes
6	7.556	<a href="#">Cortaderia selloana</a>	<a href="#">wb845-396</a>	Giessow/Roth, 2007-06-14	Yes
7	7.556	<a href="#">Cortaderia selloana</a>	<a href="#">wb845-444</a>	Giessow/Roth, 2007-06-14	Yes
8	7.506	<a href="#">Tamarix ramosissima</a>	<a href="#">wb786-24</a>	Giessow/Roth, 2007-06-14	Yes
9	7.453	<a href="#">Tamarix ramosissima</a>	<a href="#">wb786-27</a>	Giessow/Roth, 2007-06-14	Yes
10	7.401	<a href="#">Tamarix ramosissima</a>	<a href="#">wb786-14</a>	Giessow/Roth, 2007-06-14	Yes
11	7.348	<a href="#">Cortaderia selloana</a>	<a href="#">wb849-449</a>	staff, 2007-06-14	Yes
12	7.348	<a href="#">Cortaderia selloana</a>	<a href="#">wb845-395</a>	Giessow/Roth, 2007-06-14	Yes
13	7.348	<a href="#">Cortaderia selloana</a>	<a href="#">wb845-394</a>	Giessow/Roth, 2007-06-14	Yes
14	7.348	<a href="#">Cortaderia selloana</a>	<a href="#">wb845-412</a>	Giessow/Roth, 2007-06-14	Yes
15	7.348	<a href="#">Cortaderia selloana</a>	<a href="#">wb845-430</a>	Giessow/Roth, 2007-06-14	Yes
16	7.333	<a href="#">Tamarix ramosissima</a>	<a href="#">wb786-22</a>	Giessow/Roth, 2007-06-14	Yes
17	7.333	<a href="#">Tamarix ramosissima</a>	<a href="#">wb786-21</a>	Giessow/Roth, 2007-06-14	Yes
18	7.296	<a href="#">Cortaderia selloana</a>	<a href="#">wb845-404</a>	Giessow/Roth, 2007-06-14	Yes
19	7.280	<a href="#">Tamarix ramosissima</a>	<a href="#">wb786-12</a>	Giessow/Roth, 2007-06-14	Yes
20	7.280	<a href="#">Tamarix ramosissima</a>	<a href="#">wb786-11</a>	Giessow/Roth, 2007-06-14	Yes
21	7.280	<a href="#">Tamarix ramosissima</a>	<a href="#">wb786-13</a>	Giessow/Roth, 2007-06-14	Yes
22	7.175	<a href="#">Cortaderia selloana</a>	<a href="#">wb849-447</a>	staff, 2007-06-14	Yes
23	7.175	<a href="#">Cortaderia selloana</a>	<a href="#">wb849-450</a>	staff, 2007-06-14	Yes
24	7.175	<a href="#">Cortaderia selloana</a>	<a href="#">wb849-448</a>	staff, 2007-06-14	Yes
25	7.175	<a href="#">Cortaderia selloana</a>	<a href="#">wb845-428</a>	Giessow/Roth, 2007-06-14	Yes
26	7.175	<a href="#">Cortaderia selloana</a>	<a href="#">wb845-429</a>	Giessow/Roth, 2007-06-14	Yes
27	7.123	<a href="#">Cortaderia selloana</a>	<a href="#">wb845-406</a>	Giessow/Roth, 2007-06-14	Yes
28	7.016	<a href="#">Brassica tournefortii</a>	<a href="#">wb1300-331</a>	Heather Elwood, 2012-06-04	Yes
29	7.016	<a href="#">Brassica tournefortii</a>	<a href="#">wb1300-330</a>	Heather Elwood, 2012-06-04	Yes
30	6.964	<a href="#">Tamarix ramosissima</a>	<a href="#">wb786-26</a>	Giessow/Roth, 2007-06-14	Yes
31	6.963	<a href="#">Brassica tournefortii</a>	<a href="#">wb1298-294</a>	Corey Ransom, 2012-05-11	Yes
32	6.963	<a href="#">Brassica tournefortii</a>	<a href="#">wb1298-219</a>	Corey Ransom, 2012-05-09	Yes
33	6.963	<a href="#">Brassica tournefortii</a>	<a href="#">wb1298-222</a>	Corey Ransom, 2012-05-09	Yes



SDNWR less abundant spp  
Prioritized Eradication Targets

Map ID	Total Score	Species	CalFlora ID	Observed	Herbicide?
34	6.963	<a href="#">Brassica tournefortii</a>	<a href="#">wb1298-291</a>	Corey Ransom, 2012-05-11	Yes
35	6.963	<a href="#">Brassica tournefortii</a>	<a href="#">wb1298-216</a>	Corey Ransom, 2012-05-09	Yes
36	6.963	<a href="#">Brassica tournefortii</a>	<a href="#">wb1298-220</a>	Corey Ransom, 2012-05-09	Yes
37	6.963	<a href="#">Brassica tournefortii</a>	<a href="#">wb1298-221</a>	Corey Ransom, 2012-05-09	Yes
38	6.963	<a href="#">Brassica tournefortii</a>	<a href="#">wb1298-218</a>	Corey Ransom, 2012-05-09	Yes
39	6.963	<a href="#">Brassica tournefortii</a>	<a href="#">wb1301-0</a>	Heather Elwood, 2012-06-07	Yes
40	6.963	<a href="#">Brassica tournefortii</a>	<a href="#">wb1300-114</a>	Dillon Harker, 2012-06-07	Yes
41	6.963	<a href="#">Brassica tournefortii</a>	<a href="#">wb1297-2</a>	Corey Ransom, 2012-05-11	Yes
42	6.957	<a href="#">Foeniculum vulgare</a>	<a href="#">wb1309-88</a>	Dillon Harker, 2012-06-04	Yes
43	6.957	<a href="#">Foeniculum vulgare</a>	<a href="#">wb1309-87</a>	Dillon Harker, 2012-06-04	Yes
44	6.957	<a href="#">Foeniculum vulgare</a>	<a href="#">wb1309-86</a>	Dillon Harker, 2012-06-04	Yes
45	6.957	<a href="#">Foeniculum vulgare</a>	<a href="#">wb1309-85</a>	Dillon Harker, 2012-06-04	Yes
46	6.931	<a href="#">Tamarix ramosissima</a>	<a href="#">wb787-96</a>	staff, 2007-06-14	Yes
47	6.911	<a href="#">Brassica tournefortii</a>	<a href="#">wb1300-135</a>	Corey Ransom, 2012-05-10	Yes
48	6.911	<a href="#">Brassica tournefortii</a>	<a href="#">wb1300-133</a>	Corey Ransom, 2012-05-10	Yes
49	6.911	<a href="#">Brassica tournefortii</a>	<a href="#">wb1298-227</a>	Corey Ransom, 2012-05-09	Yes
50	6.911	<a href="#">Brassica tournefortii</a>	<a href="#">wb1300-134</a>	Corey Ransom, 2012-05-10	Yes
51	6.860	<a href="#">Cortaderia selloana</a>	<a href="#">wb845-443</a>	Giessow/Roth, 2007-06-14	Yes
52	6.852	<a href="#">Foeniculum vulgare</a>	<a href="#">wb1309-83</a>	Dillon Harker, 2012-06-04	Yes
53	6.826	<a href="#">Cortaderia selloana</a>	<a href="#">wb845-416</a>	Giessow/Roth, 2007-06-14	Yes
54	6.826	<a href="#">Cortaderia selloana</a>	<a href="#">wb845-421</a>	Giessow/Roth, 2007-06-14	Yes
55	6.826	<a href="#">Cortaderia selloana</a>	<a href="#">wb845-434</a>	Giessow/Roth, 2007-06-14	Yes
56	6.800	<a href="#">Foeniculum vulgare</a>	<a href="#">wb1309-28</a>	Dillon Harker, 2012-05-28	Yes
57	6.800	<a href="#">Foeniculum vulgare</a>	<a href="#">wb1310-49</a>	Heather Elwood, 2012-05-29	Yes
58	6.800	<a href="#">Foeniculum vulgare</a>	<a href="#">wb1308-112</a>	Parker Chapple, 2012-05-29	Yes
59	6.800	<a href="#">Foeniculum vulgare</a>	<a href="#">wb1308-114</a>	Parker Chapple, 2012-05-29	Yes
60	6.800	<a href="#">Foeniculum vulgare</a>	<a href="#">wb1308-96</a>	Parker Chapple, 2012-05-29	Yes
61	6.800	<a href="#">Foeniculum vulgare</a>	<a href="#">wb1308-98</a>	Parker Chapple, 2012-05-29	Yes
62	6.800	<a href="#">Foeniculum vulgare</a>	<a href="#">wb1308-97</a>	Parker Chapple, 2012-05-29	Yes
63	6.800	<a href="#">Foeniculum vulgare</a>	<a href="#">wb1308-106</a>	Parker Chapple, 2012-05-29	Yes
64	6.800	<a href="#">Foeniculum vulgare</a>	<a href="#">wb1308-107</a>	Parker Chapple, 2012-05-29	Yes
65	6.800	<a href="#">Foeniculum vulgare</a>	<a href="#">wb1308-115</a>	Parker Chapple, 2012-05-29	Yes
66	6.800	<a href="#">Foeniculum vulgare</a>	<a href="#">wb1308-109</a>	Parker Chapple, 2012-05-29	Yes



SDNWR less abundant spp  
Prioritized Eradication Targets

Map ID	Total Score	Species	CalFlora ID	Observed	Herbicide?
67	6.800	<a href="#">Foeniculum vulgare</a>	<a href="#">wb1308-94</a>	Parker Chapple, 2012-05-29	Yes
68	6.800	<a href="#">Foeniculum vulgare</a>	<a href="#">wb1308-113</a>	Parker Chapple, 2012-05-29	Yes
69	6.800	<a href="#">Foeniculum vulgare</a>	<a href="#">wb1309-82</a>	Dillon Harker, 2012-06-04	Yes
70	6.776	<a href="#">Tamarix ramosissima</a>	<a href="#">wb786-19</a>	Giessow/Roth, 2007-06-14	Yes
71	6.770	<a href="#">Ehrharta calycina</a>	<a href="#">wb1307-267</a>	Corey Ransom, 2012-05-11	Yes
72	6.748	<a href="#">Foeniculum vulgare</a>	<a href="#">wb1309-135</a>	Heather Elwood, 2012-05-10	Yes
73	6.718	<a href="#">Ehrharta calycina</a>	<a href="#">wb1309-110</a>	Dillon Harker, 2012-06-06	Yes
74	6.718	<a href="#">Ehrharta calycina</a>	<a href="#">wb1309-111</a>	Dillon Harker, 2012-06-06	Yes
75	6.718	<a href="#">Ehrharta calycina</a>	<a href="#">wb1309-112</a>	Dillon Harker, 2012-06-06	Yes
76	6.718	<a href="#">Ehrharta calycina</a>	<a href="#">wb1309-115</a>	Heather Elwood, 2012-05-09	Yes
77	6.708	<a href="#">Tamarix ramosissima</a>	<a href="#">wb786-18</a>	Giessow/Roth, 2007-06-14	Yes
78	6.671	<a href="#">Tamarix ramosissima</a>	<a href="#">wb786-15</a>	Giessow/Roth, 2007-06-14	Yes
79	6.652	<a href="#">Cortaderia selloana</a>	<a href="#">wb845-431</a>	Giessow/Roth, 2007-06-14	Yes
80	6.619	<a href="#">Cortaderia selloana</a>	<a href="#">wb845-400</a>	Giessow/Roth, 2007-06-14	Yes
81	6.619	<a href="#">Cortaderia selloana</a>	<a href="#">wb849-446</a>	staff, 2007-06-14	Yes
82	6.619	<a href="#">Tamarix ramosissima</a>	<a href="#">wb787-92</a>	staff, 2007-06-14	Yes
83	6.619	<a href="#">Tamarix ramosissima</a>	<a href="#">wb787-93</a>	staff, 2007-06-14	Yes
84	6.603	<a href="#">Tamarix ramosissima</a>	<a href="#">wb786-16</a>	Giessow/Roth, 2007-06-14	Yes
85	6.567	<a href="#">Cortaderia selloana</a>	<a href="#">wb845-403</a>	Giessow/Roth, 2007-06-14	Yes
86	6.566	<a href="#">Brassica tournefortii</a>	<a href="#">wb1300-120</a>	Corey Ransom, 2012-05-09	Yes
87	6.566	<a href="#">Brassica tournefortii</a>	<a href="#">wb1297-0</a>	Corey Ransom, 2012-05-11	Yes
88	6.566	<a href="#">Brassica tournefortii</a>	<a href="#">wb1297-1</a>	Corey Ransom, 2012-05-11	Yes
89	6.513	<a href="#">Brassica tournefortii</a>	<a href="#">wb1300-123</a>	Corey Ransom, 2012-05-09	Yes
90	6.464	<a href="#">Tamarix ramosissima</a>	<a href="#">wb1311-321</a>	Kimberly Edvarchuk, 2012-05-15	Yes
91	6.455	<a href="#">Foeniculum vulgare</a>	<a href="#">wb1307-20</a>	Heather Elwood, 2012-05-28	Yes
92	6.446	<a href="#">Cortaderia selloana</a>	<a href="#">wb845-402</a>	Giessow/Roth, 2007-06-14	Yes
93	6.403	<a href="#">Onopordum acanthium</a>	<a href="#">wb1312-176</a>	Heather Elwood, 2012-05-10	Yes
94	6.402	<a href="#">Foeniculum vulgare</a>	<a href="#">wb1307-23</a>	Heather Elwood, 2012-05-29	Yes
95	6.397	<a href="#">Tamarix ramosissima</a>	<a href="#">wb786-28</a>	Giessow/Roth, 2007-06-14	Yes
96	6.393	<a href="#">Cortaderia selloana</a>	<a href="#">wb845-399</a>	Giessow/Roth, 2007-06-14	Yes
97	6.393	<a href="#">Cortaderia selloana</a>	<a href="#">wb845-401</a>	Giessow/Roth, 2007-06-14	Yes
98	6.393	<a href="#">Cortaderia selloana</a>	<a href="#">wb845-398</a>	Giessow/Roth, 2007-06-14	Yes
99	6.393	<a href="#">Cortaderia selloana</a>	<a href="#">wb845-397</a>	Giessow/Roth, 2007-06-14	Yes





SDNWR less abundant spp  
Prioritized Eradication Targets

Map ID	Total Score	Species	CalFlora ID	Observed	Herbicide?
100	6.359	<a href="#">Tamarix ramosissima</a>	<a href="#">wb1311-322</a>	Kimberly Edvarchuk, 2012-05-15	Yes
101	6.359	<a href="#">Tamarix ramosissima</a>	<a href="#">wb1311-355</a>	Kimberly Edvarchuk, 2012-05-15	Yes
102	6.359	<a href="#">Tamarix ramosissima</a>	<a href="#">wb1311-353</a>	Kimberly Edvarchuk, 2012-05-15	Yes
103	6.320	<a href="#">Delairea odorata</a>	<a href="#">wb1308-330</a>	Dillon Harker, 2012-05-18	Yes
104	6.320	<a href="#">Delairea odorata</a>	<a href="#">wb729-20</a>	Giessow/Roth, 2007-06-14	Yes
105	6.320	<a href="#">Delairea odorata</a>	<a href="#">wb459-24</a>	Giessow/Roth, 2009-01-01	Yes
106	6.320	<a href="#">Delairea odorata</a>	<a href="#">wb1308-331</a>	Dillon Harker, 2012-05-18	Yes
107	6.320	<a href="#">Delairea odorata</a>	<a href="#">wb1308-326</a>	Dillon Harker, 2012-05-18	Yes
108	6.320	<a href="#">Ehrharta calycina</a>	<a href="#">wb1310-78</a>	Heather Elwood, 2012-05-09	Yes
109	6.320	<a href="#">Ehrharta calycina</a>	<a href="#">wb1307-26</a>	Heather Elwood, 2012-05-09	Yes
110	6.320	<a href="#">Ehrharta calycina</a>	<a href="#">wb1307-6</a>	Heather Elwood, 2012-05-09	Yes
111	6.320	<a href="#">Ehrharta calycina</a>	<a href="#">wb1307-260</a>	Heather Elwood, 2012-05-09	Yes
112	6.320	<a href="#">Brassica tournefortii</a>	<a href="#">wb1300-329</a>	Heather Elwood, 2012-06-04	Yes
113	6.288	<a href="#">Cortaderia selloana</a>	<a href="#">wb1308-284</a>	Dillon Harker, 2012-05-14	Yes
114	6.267	<a href="#">Brassica tournefortii</a>	<a href="#">wb1300-119</a>	Corey Ransom, 2012-05-09	Yes
115	6.267	<a href="#">Brassica tournefortii</a>	<a href="#">wb1298-224</a>	Corey Ransom, 2012-05-09	Yes
116	6.267	<a href="#">Brassica tournefortii</a>	<a href="#">wb1301-1</a>	Heather Elwood, 2012-06-07	Yes
117	6.267	<a href="#">Brassica tournefortii</a>	<a href="#">wb1300-127</a>	Corey Ransom, 2012-05-09	Yes
118	6.267	<a href="#">Brassica tournefortii</a>	<a href="#">wb1301-2</a>	Heather Elwood, 2012-06-07	Yes
119	6.267	<a href="#">Brassica tournefortii</a>	<a href="#">wb1298-293</a>	Corey Ransom, 2012-05-11	Yes
120	6.267	<a href="#">Brassica tournefortii</a>	<a href="#">wb1298-215</a>	Corey Ransom, 2012-05-09	Yes
121	6.267	<a href="#">Brassica tournefortii</a>	<a href="#">wb1300-115</a>	Corey Ransom, 2012-05-09	Yes
122	6.267	<a href="#">Brassica tournefortii</a>	<a href="#">wb1300-118</a>	Corey Ransom, 2012-05-09	Yes
123	6.267	<a href="#">Brassica tournefortii</a>	<a href="#">wb1300-117</a>	Corey Ransom, 2012-05-09	Yes
124	6.267	<a href="#">Brassica tournefortii</a>	<a href="#">wb1299-148</a>	Parker Chapple, 2012-05-09	Yes
125	6.267	<a href="#">Brassica tournefortii</a>	<a href="#">wb1300-116</a>	Corey Ransom, 2012-05-09	Yes
126	6.267	<a href="#">Brassica tournefortii</a>	<a href="#">wb1299-147</a>	Parker Chapple, 2012-06-07	Yes
127	6.267	<a href="#">Brassica tournefortii</a>	<a href="#">wb1298-223</a>	Corey Ransom, 2012-05-09	Yes
128	6.267	<a href="#">Brassica tournefortii</a>	<a href="#">wb1300-122</a>	Corey Ransom, 2012-05-09	Yes
129	6.267	<a href="#">Brassica tournefortii</a>	<a href="#">wb1300-121</a>	Corey Ransom, 2012-05-09	Yes
130	6.267	<a href="#">Brassica tournefortii</a>	<a href="#">wb1298-225</a>	Corey Ransom, 2012-05-09	Yes
131	6.267	<a href="#">Brassica tournefortii</a>	<a href="#">wb1300-158</a>	Heather Elwood, 2012-05-09	Yes
132	6.267	<a href="#">Brassica tournefortii</a>	<a href="#">wb1301-3</a>	Heather Elwood, 2012-05-09	Yes



SDNWR less abundant spp  
Prioritized Eradication Targets

Map ID	Total Score	Species	CalFlora ID	Observed	Herbicide?
133	6.267	<a href="#">Brassica tournefortii</a>	<a href="#">wb1298-228</a>	Corey Ransom, 2012-05-09	Yes
134	6.267	<a href="#">Brassica tournefortii</a>	<a href="#">wb1299-146</a>	Parker Chapple, 2012-06-07	Yes
135	6.267	<a href="#">Brassica tournefortii</a>	<a href="#">wb1298-290</a>	Corey Ransom, 2012-05-11	Yes
136	6.267	<a href="#">Brassica tournefortii</a>	<a href="#">wb1298-289</a>	Corey Ransom, 2012-05-11	Yes
137	6.267	<a href="#">Brassica tournefortii</a>	<a href="#">wb1298-217</a>	Corey Ransom, 2012-05-09	Yes
138	6.267	<a href="#">Brassica tournefortii</a>	<a href="#">wb1300-148</a>	Corey Ransom, 2012-05-10	Yes
139	6.261	<a href="#">Foeniculum vulgare</a>	<a href="#">wb1309-84</a>	Dillon Harker, 2012-06-04	Yes
140	6.240	<a href="#">Cortaderia selloana</a>	<a href="#">wb845-435</a>	Giessow/Roth, 2007-06-14	Yes
141	6.237	<a href="#">Vinca major</a>	<a href="#">wb1312-28</a>	Dillon Harker, 2012-05-18	Yes
142	6.215	<a href="#">Delairea odorata</a>	<a href="#">wb729-19</a>	Giessow/Roth, 2007-06-14	Yes
143	6.215	<a href="#">Delairea odorata</a>	<a href="#">wb1307-218</a>	Heather Elwood, 2012-05-18	Yes
144	6.215	<a href="#">Delairea odorata</a>	<a href="#">wb459-23</a>	Giessow/Roth, 2009-01-01	Yes
145	6.215	<a href="#">Delairea odorata</a>	<a href="#">wb1308-334</a>	Dillon Harker, 2012-05-18	Yes
146	6.215	<a href="#">Delairea odorata</a>	<a href="#">wb1308-335</a>	Dillon Harker, 2012-05-18	Yes
147	6.215	<a href="#">Brassica tournefortii</a>	<a href="#">wb1300-132</a>	Corey Ransom, 2012-05-10	Yes
148	6.215	<a href="#">Brassica tournefortii</a>	<a href="#">wb1300-166</a>	Heather Elwood, 2012-05-09	Yes
149	6.215	<a href="#">Brassica tournefortii</a>	<a href="#">wb1298-247</a>	Corey Ransom, 2012-05-10	Yes
150	6.215	<a href="#">Brassica tournefortii</a>	<a href="#">wb1300-165</a>	Heather Elwood, 2012-05-09	Yes
151	6.215	<a href="#">Brassica tournefortii</a>	<a href="#">wb1300-131</a>	Corey Ransom, 2012-05-10	Yes
152	6.215	<a href="#">Brassica tournefortii</a>	<a href="#">wb1300-164</a>	Heather Elwood, 2012-05-09	Yes
153	6.215	<a href="#">Brassica tournefortii</a>	<a href="#">wb1300-130</a>	Corey Ransom, 2012-05-10	Yes
154	6.215	<a href="#">Brassica tournefortii</a>	<a href="#">wb1300-136</a>	Corey Ransom, 2012-05-10	Yes
155	6.215	<a href="#">Brassica tournefortii</a>	<a href="#">wb1300-163</a>	Heather Elwood, 2012-05-09	Yes
156	6.215	<a href="#">Brassica tournefortii</a>	<a href="#">wb1300-125</a>	Corey Ransom, 2012-05-09	Yes
157	6.215	<a href="#">Brassica tournefortii</a>	<a href="#">wb1298-295</a>	Parker Chapple, 2012-05-14	Yes
158	6.215	<a href="#">Brassica tournefortii</a>	<a href="#">wb1299-149</a>	Parker Chapple, 2012-05-09	Yes
159	6.215	<a href="#">Brassica tournefortii</a>	<a href="#">wb1300-171</a>	Heather Elwood, 2012-05-10	Yes
160	6.209	<a href="#">Foeniculum vulgare</a>	<a href="#">wb1308-165</a>	Parker Chapple, 2012-06-05	Yes
161	6.209	<a href="#">Foeniculum vulgare</a>	<a href="#">wb1308-164</a>	Parker Chapple, 2012-06-05	Yes
162	6.182	<a href="#">Brassica tournefortii</a>	<a href="#">wb1300-237</a>	Heather Elwood, 2012-05-17	Yes
163	6.156	<a href="#">Foeniculum vulgare</a>	<a href="#">wb1309-329</a>	Heather Elwood, 2012-05-21	Yes
164	6.138	<a href="#">Tamarix ramosissima</a>	<a href="#">wb787-495</a>	staff, 2005-07-30	Yes
165	6.132	<a href="#">Vinca major</a>	<a href="#">wb1311-275</a>	Parker Chapple, 2012-05-18	Yes



SDNWR less abundant spp  
Prioritized Eradication Targets

Map ID	Total Score	Species	CalFlora ID	Observed	Herbicide?
166	6.104	<a href="#">Foeniculum vulgare</a>	<a href="#">wb1308-110</a>	Parker Chapple, 2012-05-29	Yes
167	6.104	<a href="#">Foeniculum vulgare</a>	<a href="#">wb1309-81</a>	Dillon Harker, 2012-06-04	Yes
168	6.104	<a href="#">Foeniculum vulgare</a>	<a href="#">wb1308-4</a>	Parker Chapple, 2012-05-21	Yes
169	6.104	<a href="#">Foeniculum vulgare</a>	<a href="#">wb1310-45</a>	Heather Elwood, 2012-05-29	Yes
170	6.074	<a href="#">Ehrharta calycina</a>	<a href="#">wb1307-268</a>	Corey Ransom, 2012-05-11	Yes
171	6.071	<a href="#">Foeniculum vulgare</a>	<a href="#">wb1309-260</a>	Heather Elwood, 2012-05-15	Yes
172	6.071	<a href="#">Foeniculum vulgare</a>	<a href="#">wb1308-327</a>	Dillon Harker, 2012-05-18	Yes
173	6.052	<a href="#">Foeniculum vulgare</a>	<a href="#">wb1309-114</a>	Corey Ransom, 2012-05-10	Yes
174	6.052	<a href="#">Foeniculum vulgare</a>	<a href="#">wb1307-263</a>	Corey Ransom, 2012-05-10	Yes
175	6.033	<a href="#">Tamarix ramosissima</a>	<a href="#">wb787-85</a>	staff, 2007-06-14	Yes
176	6.033	<a href="#">Tamarix ramosissima</a>	<a href="#">wb787-86</a>	staff, 2007-06-14	Yes
177	6.033	<a href="#">Tamarix ramosissima</a>	<a href="#">wb787-87</a>	staff, 2007-06-14	Yes
178	6.033	<a href="#">Tamarix ramosissima</a>	<a href="#">wb787-88</a>	staff, 2007-06-14	Yes
179	6.033	<a href="#">Tamarix ramosissima</a>	<a href="#">wb787-490</a>	staff, 2005-07-30	Yes
180	6.033	<a href="#">Tamarix ramosissima</a>	<a href="#">wb787-90</a>	staff, 2007-06-14	Yes
181	6.031	<a href="#">Pennisetum setaceum</a>	<a href="#">wb1312-226</a>	Heather Elwood, 2012-05-25	Yes
182	6.022	<a href="#">Ehrharta calycina</a>	<a href="#">wb1310-77</a>	Heather Elwood, 2012-05-09	Yes
183	5.980	<a href="#">Tamarix ramosissima</a>	<a href="#">wb787-91</a>	staff, 2007-06-14	Yes
184	5.980	<a href="#">Cortaderia selloana</a>	<a href="#">wb850-449</a>	staff, 2007-06-14	Yes
185	5.980	<a href="#">Cortaderia selloana</a>	<a href="#">wb845-411</a>	Giessow/Roth, 2007-06-14	Yes
186	5.978	<a href="#">Pennisetum setaceum</a>	<a href="#">wb1312-29</a>	Dillon Harker, 2012-05-18	Yes
187	5.978	<a href="#">Pennisetum setaceum</a>	<a href="#">wb1312-27</a>	Dillon Harker, 2012-05-18	Yes
188	5.966	<a href="#">Foeniculum vulgare</a>	<a href="#">wb1307-303</a>	Parker Chapple, 2012-05-15	Yes
189	5.928	<a href="#">Cortaderia selloana</a>	<a href="#">wb850-464</a>	staff, 2007-06-14	Yes
190	5.928	<a href="#">Cortaderia selloana</a>	<a href="#">wb850-467</a>	staff, 2007-06-14	Yes
191	5.928	<a href="#">Cortaderia selloana</a>	<a href="#">wb850-463</a>	staff, 2007-06-14	Yes
192	5.928	<a href="#">Cortaderia selloana</a>	<a href="#">wb850-456</a>	staff, 2007-06-14	Yes
193	5.928	<a href="#">Cortaderia selloana</a>	<a href="#">wb850-455</a>	staff, 2007-06-14	Yes
194	5.928	<a href="#">Cortaderia selloana</a>	<a href="#">wb845-417</a>	Giessow/Roth, 2007-06-14	Yes
195	5.928	<a href="#">Cortaderia selloana</a>	<a href="#">wb845-418</a>	Giessow/Roth, 2007-06-14	Yes
196	5.928	<a href="#">Cortaderia selloana</a>	<a href="#">wb845-410</a>	Giessow/Roth, 2007-06-14	Yes
197	5.926	<a href="#">Pennisetum setaceum</a>	<a href="#">wb1312-222</a>	Heather Elwood, 2012-05-21	Yes
198	5.922	<a href="#">Delairea odorata</a>	<a href="#">wb1307-219</a>	Heather Elwood, 2012-05-18	Yes



## SDNWR less abundant spp Prioritized Eradication Targets

Map ID	Total Score	Species	CalFlora ID	Observed	Herbicide?
199	5.922	<a href="#">Delairea odorata</a>	<a href="#">wb1308-333</a>	Dillon Harker, 2012-05-18	Yes
200	5.922	<a href="#">Delairea odorata</a>	<a href="#">wb1308-329</a>	Dillon Harker, 2012-05-18	Yes
201	5.873	<a href="#">Pennisetum setaceum</a>	<a href="#">wb1312-195</a>	Heather Elwood, 2012-05-16	Yes
202	5.873	<a href="#">Pennisetum setaceum</a>	<a href="#">wb1312-183</a>	Heather Elwood, 2012-05-11	Yes
203	5.873	<a href="#">Pennisetum setaceum</a>	<a href="#">wb1312-63</a>	Dillon Harker, 2012-05-29	Yes
204	5.871	<a href="#">Cortaderia selloana</a>	<a href="#">wb845-415</a>	Giessow/Roth, 2007-06-14	Yes
205	5.860	<a href="#">Tamarix ramosissima</a>	<a href="#">wb787-489</a>	staff, 2005-07-30	Yes
206	5.860	<a href="#">Tamarix ramosissima</a>	<a href="#">wb787-487</a>	staff, 2005-07-30	Yes
207	5.860	<a href="#">Tamarix ramosissima</a>	<a href="#">wb787-486</a>	staff, 2005-07-30	Yes
208	5.860	<a href="#">Tamarix ramosissima</a>	<a href="#">wb787-488</a>	staff, 2005-07-30	Yes
209	5.834	<a href="#">Nicotiana glauca</a>	<a href="#">wb1311-280</a>	Parker Chapple, 2012-05-21	Yes
210	5.807	<a href="#">Tamarix ramosissima</a>	<a href="#">wb787-492</a>	staff, 2005-07-30	Yes
211	5.807	<a href="#">Tamarix ramosissima</a>	<a href="#">wb787-491</a>	staff, 2005-07-30	Yes
212	5.807	<a href="#">Tamarix ramosissima</a>	<a href="#">wb787-484</a>	staff, 2005-07-30	Yes
213	5.807	<a href="#">Tamarix ramosissima</a>	<a href="#">wb787-485</a>	staff, 2005-07-30	Yes
214	5.781	<a href="#">Nicotiana glauca</a>	<a href="#">wb1311-262</a>	Parker Chapple, 2012-05-16	Yes
215	5.781	<a href="#">Nicotiana glauca</a>	<a href="#">wb1311-260</a>	Parker Chapple, 2012-05-16	Yes
216	5.755	<a href="#">Cortaderia selloana</a>	<a href="#">wb845-409</a>	Giessow/Roth, 2007-06-14	Yes
217	5.755	<a href="#">Cortaderia selloana</a>	<a href="#">wb845-405</a>	Giessow/Roth, 2007-06-14	Yes
218	5.755	<a href="#">Cortaderia selloana</a>	<a href="#">wb845-408</a>	Giessow/Roth, 2007-06-14	Yes
219	5.755	<a href="#">Cortaderia selloana</a>	<a href="#">wb845-407</a>	Giessow/Roth, 2007-06-14	Yes
220	5.755	<a href="#">Cortaderia selloana</a>	<a href="#">wb850-461</a>	staff, 2007-06-14	Yes
221	5.755	<a href="#">Cortaderia selloana</a>	<a href="#">wb850-462</a>	staff, 2007-06-14	Yes
222	5.755	<a href="#">Cortaderia selloana</a>	<a href="#">wb850-457</a>	staff, 2007-06-14	Yes
223	5.755	<a href="#">Cortaderia selloana</a>	<a href="#">wb850-458</a>	staff, 2007-06-14	Yes
224	5.755	<a href="#">Cortaderia selloana</a>	<a href="#">wb850-465</a>	staff, 2007-06-14	Yes
225	5.755	<a href="#">Cortaderia selloana</a>	<a href="#">wb850-466</a>	staff, 2007-06-14	Yes
226	5.755	<a href="#">Cortaderia selloana</a>	<a href="#">wb845-419</a>	Giessow/Roth, 2007-06-14	Yes
227	5.755	<a href="#">Cortaderia selloana</a>	<a href="#">wb845-420</a>	Giessow/Roth, 2007-06-14	Yes
228	5.734	<a href="#">Delairea odorata</a>	<a href="#">wb1309-13</a>	Dillon Harker, 2012-05-21	Yes
229	5.697	<a href="#">Cortaderia selloana</a>	<a href="#">wb845-422</a>	Giessow/Roth, 2007-06-14	Yes
230	5.697	<a href="#">Cortaderia selloana</a>	<a href="#">wb845-423</a>	Giessow/Roth, 2007-06-14	Yes
231	5.697	<a href="#">Cortaderia selloana</a>	<a href="#">wb845-426</a>	Giessow/Roth, 2007-06-14	Yes



SDNWR less abundant spp  
Prioritized Eradication Targets

Map ID	Total Score	Species	CalFlora ID	Observed	Herbicide?
232	5.697	<a href="#">Cortaderia selloana</a>	<a href="#">wb845-425</a>	Giessow/Roth, 2007-06-14	Yes
233	5.697	<a href="#">Cortaderia selloana</a>	<a href="#">wb845-424</a>	Giessow/Roth, 2007-06-14	Yes
234	5.697	<a href="#">Cortaderia selloana</a>	<a href="#">wb845-427</a>	Giessow/Roth, 2007-06-14	Yes
235	5.691	<a href="#">Chrysanthemum coronarium</a>	<a href="#">wb1309-330</a>	Heather Elwood, 2012-05-21	Yes
236	5.681	<a href="#">Delairea odorata</a>	<a href="#">wb1309-14</a>	Dillon Harker, 2012-05-21	Yes
237	5.677	<a href="#">Nicotiana glauca</a>	<a href="#">wb1312-50</a>	Dillon Harker, 2012-05-29	Yes
238	5.658	<a href="#">Chrysanthemum coronarium</a>	<a href="#">wb1309-317</a>	Heather Elwood, 2012-05-18	Yes
239	5.629	<a href="#">Vinca major</a>	<a href="#">wb1312-221</a>	Heather Elwood, 2012-05-18	Yes
240	5.624	<a href="#">Nicotiana glauca</a>	<a href="#">wb1311-257</a>	Corey Ransom, 2012-05-09	Yes
241	5.537	<a href="#">Foeniculum vulgare</a>	<a href="#">wb1310-32</a>	Heather Elwood, 2012-05-25	Yes
242	5.537	<a href="#">Foeniculum vulgare</a>	<a href="#">wb1308-30</a>	Parker Chapple, 2012-05-25	Yes
243	5.537	<a href="#">Foeniculum vulgare</a>	<a href="#">wb1310-28</a>	Heather Elwood, 2012-05-24	Yes
244	5.528	<a href="#">Pennisetum setaceum</a>	<a href="#">wb1311-300</a>	Parker Chapple, 2012-06-05	Yes
245	5.524	<a href="#">Vinca major</a>	<a href="#">wb1312-219</a>	Heather Elwood, 2012-05-18	Yes
246	5.519	<a href="#">Delairea odorata</a>	<a href="#">wb1309-318</a>	Heather Elwood, 2012-05-18	Yes
247	5.501	<a href="#">Chrysanthemum coronarium</a>	<a href="#">wb1307-342</a>	Parker Chapple, 2012-05-17	Yes
248	5.484	<a href="#">Foeniculum vulgare</a>	<a href="#">wb1310-38</a>	Heather Elwood, 2012-05-25	Yes
249	5.484	<a href="#">Foeniculum vulgare</a>	<a href="#">wb1309-79</a>	Dillon Harker, 2012-06-04	Yes
250	5.484	<a href="#">Foeniculum vulgare</a>	<a href="#">wb1309-337</a>	Heather Elwood, 2012-05-23	Yes
251	5.484	<a href="#">Foeniculum vulgare</a>	<a href="#">wb1309-331</a>	Heather Elwood, 2012-05-21	Yes
252	5.484	<a href="#">Foeniculum vulgare</a>	<a href="#">wb1309-75</a>	Dillon Harker, 2012-06-04	Yes
253	5.484	<a href="#">Foeniculum vulgare</a>	<a href="#">wb1310-30</a>	Heather Elwood, 2012-05-25	Yes
254	5.471	<a href="#">Vinca major</a>	<a href="#">wb1311-276</a>	Parker Chapple, 2012-05-18	Yes
255	5.467	<a href="#">Nicotiana glauca</a>	<a href="#">wb453-79</a>	Todd Keeler-Wolf, Jonathan Dunn, 2009-05-20	Yes
256	5.432	<a href="#">Foeniculum vulgare</a>	<a href="#">wb1308-163</a>	Parker Chapple, 2012-06-05	Yes
257	5.432	<a href="#">Foeniculum vulgare</a>	<a href="#">wb1309-78</a>	Dillon Harker, 2012-06-04	Yes
258	5.432	<a href="#">Foeniculum vulgare</a>	<a href="#">wb1309-73</a>	Dillon Harker, 2012-06-04	Yes
259	5.432	<a href="#">Foeniculum vulgare</a>	<a href="#">wb1309-77</a>	Dillon Harker, 2012-06-04	Yes
260	5.432	<a href="#">Foeniculum vulgare</a>	<a href="#">wb1309-76</a>	Dillon Harker, 2012-06-04	Yes
261	5.432	<a href="#">Foeniculum vulgare</a>	<a href="#">wb1309-72</a>	Dillon Harker, 2012-06-01	Yes
262	5.432	<a href="#">Foeniculum vulgare</a>	<a href="#">wb1308-162</a>	Parker Chapple, 2012-06-05	Yes
263	5.432	<a href="#">Foeniculum vulgare</a>	<a href="#">wb1309-74</a>	Dillon Harker, 2012-06-04	Yes
264	5.432	<a href="#">Foeniculum vulgare</a>	<a href="#">wb1309-0</a>	Dillon Harker, 2012-05-18	Yes



SDNWR less abundant spp  
Prioritized Eradication Targets

Map ID	Total Score	Species	CalFlora ID	Observed	Herbicide?
265	5.427	<a href="#">Foeniculum vulgare</a>	<a href="#">wb1308-262</a>	Kimberly Edvarchuk, 2012-05-15	Yes
266	5.427	<a href="#">Foeniculum vulgare</a>	<a href="#">wb1309-261</a>	Heather Elwood, 2012-05-15	Yes
267	5.375	<a href="#">Foeniculum vulgare</a>	<a href="#">wb1308-336</a>	Dillon Harker, 2012-05-18	Yes
268	5.369	<a href="#">Vinca major</a>	<a href="#">wb459-30</a>	Giessow/Roth, 2009-01-01	Yes
269	5.369	<a href="#">Vinca major</a>	<a href="#">wb835-3</a>	Giessow/Roth, 2007-06-14	Yes
270	5.337	<a href="#">Dittrichia graveolens</a>	<a href="#">wb1308-285</a>	Dillon Harker, 2012-05-14	Yes
271	5.331	<a href="#">Nicotiana glauca</a>	<a href="#">wb1311-10</a>	Heather Elwood, 2012-05-16	Yes
272	5.308	<a href="#">Ailanthus altissima</a>	<a href="#">wb1299-205</a>	Kimberly Edvarchuk, 2012-05-15	Yes
273	5.308	<a href="#">Ailanthus altissima</a>	<a href="#">wb1299-204</a>	Kimberly Edvarchuk, 2012-05-15	Yes
274	5.308	<a href="#">Ailanthus altissima</a>	<a href="#">wb1299-203</a>	Kimberly Edvarchuk, 2012-05-15	Yes
275	5.284	<a href="#">Delairea odorata</a>	<a href="#">wb1307-4</a>	Dillon Harker, 2012-05-21	Yes
276	5.282	<a href="#">Pennisetum setaceum</a>	<a href="#">wb1312-189</a>	Heather Elwood, 2012-05-16	Yes
277	5.264	<a href="#">Vinca major</a>	<a href="#">wb459-21</a>	Giessow/Roth, 2009-01-01	Yes
278	5.264	<a href="#">Vinca major</a>	<a href="#">wb835-1</a>	Giessow/Roth, 2007-06-14	Yes
279	5.264	<a href="#">Vinca major</a>	<a href="#">wb835-2</a>	Giessow/Roth, 2007-06-14	Yes
280	5.257	<a href="#">Brassica tournefortii</a>	<a href="#">wb1299-41</a>	Parker Chapple, 2012-05-28	Yes
281	5.230	<a href="#">Pennisetum setaceum</a>	<a href="#">wb1311-299</a>	Parker Chapple, 2012-06-05	Yes
282	5.230	<a href="#">Pennisetum setaceum</a>	<a href="#">wb1312-101</a>	Dillon Harker, 2012-06-04	Yes
283	5.205	<a href="#">Brassica tournefortii</a>	<a href="#">wb1300-254</a>	Heather Elwood, 2012-05-24	Yes
284	5.196	<a href="#">Pennisetum setaceum</a>	<a href="#">wb1311-177</a>	Heather Elwood, 2012-05-18	Yes
285	5.196	<a href="#">Pennisetum setaceum</a>	<a href="#">wb1312-25</a>	Dillon Harker, 2012-05-18	Yes
286	5.196	<a href="#">Pennisetum setaceum</a>	<a href="#">wb1311-176</a>	Heather Elwood, 2012-05-18	Yes
287	5.196	<a href="#">Pennisetum setaceum</a>	<a href="#">wb1312-26</a>	Dillon Harker, 2012-05-18	Yes
288	5.196	<a href="#">Mesembryanthemum crystallinum</a>	<a href="#">wb1311-269</a>	Parker Chapple, 2012-05-17	Yes
289	5.196	<a href="#">Pennisetum setaceum</a>	<a href="#">wb1312-201</a>	Heather Elwood, 2012-05-17	Yes
290	5.196	<a href="#">Pennisetum setaceum</a>	<a href="#">wb1311-265</a>	Parker Chapple, 2012-05-17	Yes
291	5.196	<a href="#">Pennisetum setaceum</a>	<a href="#">wb1311-264</a>	Parker Chapple, 2012-05-17	Yes
292	5.177	<a href="#">Pennisetum setaceum</a>	<a href="#">wb1312-193</a>	Heather Elwood, 2012-05-16	Yes
293	5.177	<a href="#">Pennisetum setaceum</a>	<a href="#">wb1312-194</a>	Heather Elwood, 2012-05-16	Yes
294	5.177	<a href="#">Pennisetum setaceum</a>	<a href="#">wb1312-235</a>	Heather Elwood, 2012-05-10	Yes
295	5.177	<a href="#">Pennisetum setaceum</a>	<a href="#">wb1311-297</a>	Parker Chapple, 2012-06-04	Yes
296	5.177	<a href="#">Pennisetum setaceum</a>	<a href="#">wb1312-234</a>	Heather Elwood, 2012-05-10	Yes
297	5.146	<a href="#">Foeniculum vulgare</a>	<a href="#">wb1309-51</a>	Dillon Harker, 2012-05-31	Yes



## SDNWR less abundant spp Prioritized Eradication Targets

Map ID	Total Score	Species	CalFlora ID	Observed	Herbicide?
298	5.144	<a href="#">Mesembryanthemum crystallinum</a>	<a href="#">wb1312-214</a>	Heather Elwood, 2012-05-18	Yes
299	5.144	<a href="#">Mesembryanthemum crystallinum</a>	<a href="#">wb1311-267</a>	Parker Chapple, 2012-05-17	Yes
300	5.144	<a href="#">Pennisetum setaceum</a>	<a href="#">wb1312-199</a>	Heather Elwood, 2012-05-17	Yes
301	5.144	<a href="#">Mesembryanthemum crystallinum</a>	<a href="#">wb1311-268</a>	Parker Chapple, 2012-05-17	Yes
302	5.144	<a href="#">Mesembryanthemum crystallinum</a>	<a href="#">wb1312-21</a>	Dillon Harker, 2012-05-18	Yes
303	5.144	<a href="#">Mesembryanthemum crystallinum</a>	<a href="#">wb1312-22</a>	Dillon Harker, 2012-05-18	Yes
304	5.144	<a href="#">Mesembryanthemum crystallinum</a>	<a href="#">wb1311-274</a>	Parker Chapple, 2012-05-18	Yes
305	5.136	<a href="#">Ailanthus altissima</a>	<a href="#">wb456-202</a>	Todd Keeler-Wolf, Jonathan Dunn, 2009-05-07	Yes
306	5.126	<a href="#">Vinca major</a>	<a href="#">wb1311-15</a>	Parker Chapple, 2012-05-18	Yes
307	5.105	<a href="#">Nicotiana glauca</a>	<a href="#">wb1311-270</a>	Parker Chapple, 2012-05-17	Yes
308	5.094	<a href="#">Foeniculum vulgare</a>	<a href="#">wb1309-48</a>	Dillon Harker, 2012-05-31	Yes
309	5.094	<a href="#">Foeniculum vulgare</a>	<a href="#">wb1310-53</a>	Heather Elwood, 2012-05-29	Yes
310	5.094	<a href="#">Foeniculum vulgare</a>	<a href="#">wb1309-53</a>	Dillon Harker, 2012-05-31	Yes
311	5.094	<a href="#">Foeniculum vulgare</a>	<a href="#">wb1310-42</a>	Heather Elwood, 2012-05-28	Yes
312	5.094	<a href="#">Foeniculum vulgare</a>	<a href="#">wb1309-58</a>	Dillon Harker, 2012-06-01	Yes
313	5.094	<a href="#">Foeniculum vulgare</a>	<a href="#">wb1308-116</a>	Parker Chapple, 2012-05-29	Yes
314	5.094	<a href="#">Foeniculum vulgare</a>	<a href="#">wb1309-49</a>	Dillon Harker, 2012-05-31	Yes
315	5.094	<a href="#">Foeniculum vulgare</a>	<a href="#">wb1309-54</a>	Dillon Harker, 2012-06-01	Yes
316	5.094	<a href="#">Foeniculum vulgare</a>	<a href="#">wb1310-51</a>	Heather Elwood, 2012-05-29	Yes
317	5.094	<a href="#">Foeniculum vulgare</a>	<a href="#">wb1309-50</a>	Dillon Harker, 2012-05-31	Yes
318	5.094	<a href="#">Foeniculum vulgare</a>	<a href="#">wb1310-43</a>	Heather Elwood, 2012-05-28	Yes
319	5.094	<a href="#">Foeniculum vulgare</a>	<a href="#">wb1310-52</a>	Heather Elwood, 2012-05-29	Yes
320	5.094	<a href="#">Foeniculum vulgare</a>	<a href="#">wb1310-47</a>	Heather Elwood, 2012-05-29	Yes
321	5.094	<a href="#">Foeniculum vulgare</a>	<a href="#">wb1310-54</a>	Heather Elwood, 2012-05-29	Yes
322	5.094	<a href="#">Foeniculum vulgare</a>	<a href="#">wb1309-92</a>	Dillon Harker, 2012-06-04	Yes
323	5.094	<a href="#">Foeniculum vulgare</a>	<a href="#">wb1309-91</a>	Dillon Harker, 2012-06-04	Yes
324	5.087	<a href="#">Foeniculum vulgare</a>	<a href="#">wb1307-18</a>	Heather Elwood, 2012-05-25	Yes
325	5.085	<a href="#">Nicotiana glauca</a>	<a href="#">wb1311-259</a>	Parker Chapple, 2012-05-16	Yes
326	5.085	<a href="#">Nicotiana glauca</a>	<a href="#">wb1311-261</a>	Parker Chapple, 2012-05-16	Yes
327	5.041	<a href="#">Foeniculum vulgare</a>	<a href="#">wb1308-95</a>	Parker Chapple, 2012-05-29	Yes
328	5.041	<a href="#">Foeniculum vulgare</a>	<a href="#">wb1310-48</a>	Heather Elwood, 2012-05-29	Yes
329	5.041	<a href="#">Foeniculum vulgare</a>	<a href="#">wb1309-34</a>	Dillon Harker, 2012-05-29	Yes
330	5.041	<a href="#">Foeniculum vulgare</a>	<a href="#">wb1310-46</a>	Heather Elwood, 2012-05-29	Yes



SDNWR less abundant spp  
Prioritized Eradication Targets

Map ID	Total Score	Species	CalFlora ID	Observed	Herbicide?
331	5.041	<a href="#">Foeniculum vulgare</a>	<a href="#">wb1309-42</a>	Dillon Harker, 2012-05-31	Yes
332	5.041	<a href="#">Foeniculum vulgare</a>	<a href="#">wb1309-57</a>	Dillon Harker, 2012-06-01	Yes
333	5.041	<a href="#">Foeniculum vulgare</a>	<a href="#">wb1309-56</a>	Dillon Harker, 2012-06-01	Yes
334	5.041	<a href="#">Foeniculum vulgare</a>	<a href="#">wb1308-93</a>	Parker Chapple, 2012-05-28	Yes
335	5.041	<a href="#">Foeniculum vulgare</a>	<a href="#">wb1310-50</a>	Heather Elwood, 2012-05-29	Yes
336	5.039	<a href="#">Pennisetum setaceum</a>	<a href="#">wb1312-9</a>	Dillon Harker, 2012-05-15	Yes
337	5.033	<a href="#">Nicotiana glauca</a>	<a href="#">wb1312-190</a>	Heather Elwood, 2012-05-16	Yes
338	5.033	<a href="#">Nicotiana glauca</a>	<a href="#">wb1312-191</a>	Heather Elwood, 2012-05-16	Yes
339	5.033	<a href="#">Nicotiana glauca</a>	<a href="#">wb1312-108</a>	Dillon Harker, 2012-06-06	Yes
340	5.033	<a href="#">Nicotiana glauca</a>	<a href="#">wb1312-196</a>	Heather Elwood, 2012-05-16	Yes
341	5.033	<a href="#">Nicotiana glauca</a>	<a href="#">wb1312-192</a>	Heather Elwood, 2012-05-16	Yes
342	5.033	<a href="#">Nicotiana glauca</a>	<a href="#">wb1312-197</a>	Heather Elwood, 2012-05-16	Yes
343	5.019	<a href="#">Chrysanthemum coronarium</a>	<a href="#">wb1307-351</a>	Parker Chapple, 2012-05-18	Yes
344	4.996	<a href="#">Foeniculum vulgare</a>	<a href="#">wb456-171</a>	Todd Keeler-Wolf, Jonathan Dunn, 2009-05-13	Yes
345	4.989	<a href="#">Foeniculum vulgare</a>	<a href="#">wb1309-65</a>	Dillon Harker, 2012-06-01	Yes
346	4.989	<a href="#">Foeniculum vulgare</a>	<a href="#">wb1309-36</a>	Dillon Harker, 2012-05-30	Yes
347	4.962	<a href="#">Chrysanthemum coronarium</a>	<a href="#">wb1308-332</a>	Dillon Harker, 2012-05-18	Yes
348	4.962	<a href="#">Chrysanthemum coronarium</a>	<a href="#">wb1308-328</a>	Dillon Harker, 2012-05-18	Yes
349	4.953	<a href="#">Vinca major</a>	<a href="#">wb1311-175</a>	Heather Elwood, 2012-05-18	Yes
350	4.933	<a href="#">Nicotiana glauca</a>	<a href="#">wb456-197</a>	Todd Keeler-Wolf, Jonathan Dunn, 2009-05-07	Yes
351	4.928	<a href="#">Nicotiana glauca</a>	<a href="#">wb1312-187</a>	Heather Elwood, 2012-05-11	Yes
352	4.928	<a href="#">Nicotiana glauca</a>	<a href="#">wb1312-186</a>	Heather Elwood, 2012-05-11	Yes
353	4.914	<a href="#">Chrysanthemum coronarium</a>	<a href="#">wb1309-15</a>	Dillon Harker, 2012-05-21	Yes
354	4.914	<a href="#">Chrysanthemum coronarium</a>	<a href="#">wb1307-352</a>	Parker Chapple, 2012-05-18	Yes
355	4.893	<a href="#">Foeniculum vulgare</a>	<a href="#">wb1309-27</a>	Dillon Harker, 2012-05-18	Yes
356	4.893	<a href="#">Foeniculum vulgare</a>	<a href="#">wb1310-29</a>	Heather Elwood, 2012-05-25	Yes
357	4.866	<a href="#">Vinca major</a>	<a href="#">wb459-22</a>	Giessow/Roth, 2009-01-01	Yes
358	4.841	<a href="#">Foeniculum vulgare</a>	<a href="#">wb1310-39</a>	Heather Elwood, 2012-05-25	Yes
359	4.841	<a href="#">Foeniculum vulgare</a>	<a href="#">wb1310-31</a>	Heather Elwood, 2012-05-25	Yes
360	4.805	<a href="#">Chrysanthemum coronarium</a>	<a href="#">wb1307-343</a>	Parker Chapple, 2012-05-17	Yes
361	4.799	<a href="#">Pennisetum setaceum</a>	<a href="#">wb1311-164</a>	Heather Elwood, 2012-05-17	Yes
362	4.788	<a href="#">Foeniculum vulgare</a>	<a href="#">wb1309-17</a>	Dillon Harker, 2012-05-22	Yes
363	4.788	<a href="#">Foeniculum vulgare</a>	<a href="#">wb1309-80</a>	Dillon Harker, 2012-06-04	Yes





SDNWR less abundant spp  
Prioritized Eradication Targets

Map ID	Total Score	Species	CalFlora ID	Observed	Herbicide?
364	4.788	<a href="#">Foeniculum vulgare</a>	<a href="#">wb1309-334</a>	Heather Elwood, 2012-05-22	Yes
365	4.788	<a href="#">Foeniculum vulgare</a>	<a href="#">wb1309-336</a>	Heather Elwood, 2012-05-23	Yes
366	4.788	<a href="#">Foeniculum vulgare</a>	<a href="#">wb1309-335</a>	Heather Elwood, 2012-05-22	Yes
367	4.788	<a href="#">Foeniculum vulgare</a>	<a href="#">wb1310-24</a>	Heather Elwood, 2012-05-24	Yes
368	4.788	<a href="#">Foeniculum vulgare</a>	<a href="#">wb1310-0</a>	Heather Elwood, 2012-05-24	Yes
369	4.788	<a href="#">Foeniculum vulgare</a>	<a href="#">wb1308-31</a>	Parker Chapple, 2012-05-25	Yes
370	4.788	<a href="#">Foeniculum vulgare</a>	<a href="#">wb1310-40</a>	Heather Elwood, 2012-05-25	Yes
371	4.788	<a href="#">Foeniculum vulgare</a>	<a href="#">wb1308-0</a>	Parker Chapple, 2012-05-21	Yes
372	4.788	<a href="#">Foeniculum vulgare</a>	<a href="#">wb1310-41</a>	Heather Elwood, 2012-05-25	Yes
373	4.788	<a href="#">Foeniculum vulgare</a>	<a href="#">wb1308-161</a>	Parker Chapple, 2012-06-05	Yes
374	4.771	<a href="#">Nicotiana glauca</a>	<a href="#">wb458-214</a>	Jeannie Gregory, Layla Aerne, 2009-09-15	Yes
375	4.760	<a href="#">Vinca major</a>	<a href="#">wb1311-16</a>	Parker Chapple, 2012-05-18	Yes
376	4.736	<a href="#">Foeniculum vulgare</a>	<a href="#">wb1310-23</a>	Heather Elwood, 2012-05-24	Yes
377	4.736	<a href="#">Foeniculum vulgare</a>	<a href="#">wb1310-21</a>	Heather Elwood, 2012-05-24	Yes
378	4.736	<a href="#">Foeniculum vulgare</a>	<a href="#">wb1310-22</a>	Heather Elwood, 2012-05-24	Yes
379	4.736	<a href="#">Foeniculum vulgare</a>	<a href="#">wb1309-16</a>	Dillon Harker, 2012-05-22	Yes
380	4.736	<a href="#">Foeniculum vulgare</a>	<a href="#">wb1308-17</a>	Parker Chapple, 2012-05-22	Yes
381	4.736	<a href="#">Foeniculum vulgare</a>	<a href="#">wb1309-323</a>	Heather Elwood, 2012-05-18	Yes
382	4.736	<a href="#">Foeniculum vulgare</a>	<a href="#">wb1309-333</a>	Heather Elwood, 2012-05-21	Yes
383	4.696	<a href="#">Foeniculum vulgare</a>	<a href="#">wb1307-25</a>	Heather Elwood, 2012-05-29	Yes
384	4.696	<a href="#">Foeniculum vulgare</a>	<a href="#">wb1309-52</a>	Dillon Harker, 2012-05-31	Yes
385	4.655	<a href="#">Pennisetum setaceum</a>	<a href="#">wb458-233</a>	Jeannie Gregory, Layla Aerne, 2008-03-20	Yes
386	4.655	<a href="#">Pennisetum setaceum</a>	<a href="#">wb458-234</a>	Jeannie Gregory, Layla Aerne, 2008-03-24	Yes
387	4.644	<a href="#">Pennisetum setaceum</a>	<a href="#">wb458-11</a>	Todd Keeler-Wolf, Jonathan Dunn, 2009-05-13	Yes
388	4.643	<a href="#">Foeniculum vulgare</a>	<a href="#">wb1307-24</a>	Heather Elwood, 2012-05-29	Yes
389	4.643	<a href="#">Foeniculum vulgare</a>	<a href="#">wb1307-22</a>	Heather Elwood, 2012-05-29	Yes
390	4.643	<a href="#">Foeniculum vulgare</a>	<a href="#">wb1309-66</a>	Dillon Harker, 2012-06-01	Yes
391	4.643	<a href="#">Foeniculum vulgare</a>	<a href="#">wb1307-19</a>	Heather Elwood, 2012-05-28	Yes
392	4.643	<a href="#">Foeniculum vulgare</a>	<a href="#">wb1307-21</a>	Heather Elwood, 2012-05-28	Yes
393	4.621	<a href="#">Chrysanthemum coronarium</a>	<a href="#">wb1307-16</a>	Heather Elwood, 2012-05-21	Yes
394	4.592	<a href="#">Pennisetum setaceum</a>	<a href="#">wb456-175</a>	Todd Keeler-Wolf, Jonathan Dunn, 2009-05-13	Yes
395	4.581	<a href="#">Cortaderia jubata</a>	<a href="#">wb1308-99</a>	Parker Chapple, 2012-05-29	Yes
396	4.561	<a href="#">Brassica tournefortii</a>	<a href="#">wb1299-40</a>	Parker Chapple, 2012-05-28	Yes



## SDNWR less abundant spp Prioritized Eradication Targets

Map ID	Total Score	Species	CalFlora ID	Observed	Herbicide?
397	4.561	<a href="#">Brassica tournefortii</a>	<a href="#">wb1299-42</a>	Parker Chapple, 2012-05-28	Yes
398	4.558	<a href="#">Pennisetum setaceum</a>	<a href="#">wb1312-39</a>	Dillon Harker, 2012-05-18	Yes
399	4.517	<a href="#">Chrysanthemum coronarium</a>	<a href="#">wb1307-118</a>	Dillon Harker, 2012-05-21	Yes
400	4.509	<a href="#">Brassica tournefortii</a>	<a href="#">wb1299-22</a>	Parker Chapple, 2012-05-24	Yes
401	4.509	<a href="#">Brassica tournefortii</a>	<a href="#">wb1299-23</a>	Parker Chapple, 2012-05-24	Yes
402	4.509	<a href="#">Brassica tournefortii</a>	<a href="#">wb1299-24</a>	Parker Chapple, 2012-05-24	Yes
403	4.505	<a href="#">Pennisetum setaceum</a>	<a href="#">wb1312-34</a>	Dillon Harker, 2012-05-21	Yes
404	4.505	<a href="#">Pennisetum setaceum</a>	<a href="#">wb1311-278</a>	Parker Chapple, 2012-05-21	Yes
405	4.505	<a href="#">Pennisetum setaceum</a>	<a href="#">wb1312-198</a>	Heather Elwood, 2012-05-16	Yes
406	4.505	<a href="#">Pennisetum setaceum</a>	<a href="#">wb1312-232</a>	Heather Elwood, 2012-06-05	Yes
407	4.500	<a href="#">Pennisetum setaceum</a>	<a href="#">wb1312-218</a>	Heather Elwood, 2012-05-18	Yes
408	4.500	<a href="#">Pennisetum setaceum</a>	<a href="#">wb1312-24</a>	Dillon Harker, 2012-05-18	Yes
409	4.500	<a href="#">Pennisetum setaceum</a>	<a href="#">wb1311-263</a>	Parker Chapple, 2012-05-17	Yes
410	4.500	<a href="#">Pennisetum setaceum</a>	<a href="#">wb1312-202</a>	Heather Elwood, 2012-05-17	Yes
411	4.500	<a href="#">Pennisetum setaceum</a>	<a href="#">wb1312-217</a>	Heather Elwood, 2012-05-18	Yes
412	4.500	<a href="#">Pennisetum setaceum</a>	<a href="#">wb1312-200</a>	Heather Elwood, 2012-05-17	Yes
413	4.448	<a href="#">Pennisetum setaceum</a>	<a href="#">wb1311-271</a>	Parker Chapple, 2012-05-17	Yes
414	4.413	<a href="#">Nicotiana glauca</a>	<a href="#">wb1312-100</a>	Dillon Harker, 2012-06-04	Yes
415	4.409	<a href="#">Nicotiana glauca</a>	<a href="#">wb1311-343</a>	Kimberly Edvarchuk, 2012-05-15	Yes
416	4.409	<a href="#">Nicotiana glauca</a>	<a href="#">wb1311-342</a>	Kimberly Edvarchuk, 2012-05-15	Yes
417	4.409	<a href="#">Nicotiana glauca</a>	<a href="#">wb1311-344</a>	Kimberly Edvarchuk, 2012-05-15	Yes
418	4.409	<a href="#">Nicotiana glauca</a>	<a href="#">wb1312-220</a>	Heather Elwood, 2012-05-18	Yes
419	4.409	<a href="#">Nicotiana glauca</a>	<a href="#">wb1312-215</a>	Heather Elwood, 2012-05-18	Yes
420	4.409	<a href="#">Nicotiana glauca</a>	<a href="#">wb1312-216</a>	Heather Elwood, 2012-05-18	Yes
421	4.398	<a href="#">Foeniculum vulgare</a>	<a href="#">wb1308-159</a>	Parker Chapple, 2012-05-31	Yes
422	4.398	<a href="#">Foeniculum vulgare</a>	<a href="#">wb1308-157</a>	Parker Chapple, 2012-05-30	Yes
423	4.398	<a href="#">Foeniculum vulgare</a>	<a href="#">wb1309-90</a>	Dillon Harker, 2012-06-04	Yes
424	4.398	<a href="#">Foeniculum vulgare</a>	<a href="#">wb1308-160</a>	Parker Chapple, 2012-05-31	Yes
425	4.398	<a href="#">Foeniculum vulgare</a>	<a href="#">wb1310-44</a>	Heather Elwood, 2012-05-29	Yes
426	4.398	<a href="#">Foeniculum vulgare</a>	<a href="#">wb1308-117</a>	Parker Chapple, 2012-05-29	Yes
427	4.398	<a href="#">Foeniculum vulgare</a>	<a href="#">wb1308-121</a>	Parker Chapple, 2012-05-29	Yes
428	4.395	<a href="#">Pennisetum setaceum</a>	<a href="#">wb1311-273</a>	Parker Chapple, 2012-05-17	Yes
429	4.395	<a href="#">Pennisetum setaceum</a>	<a href="#">wb1311-272</a>	Parker Chapple, 2012-05-17	Yes



SDNWR less abundant spp  
Prioritized Eradication Targets

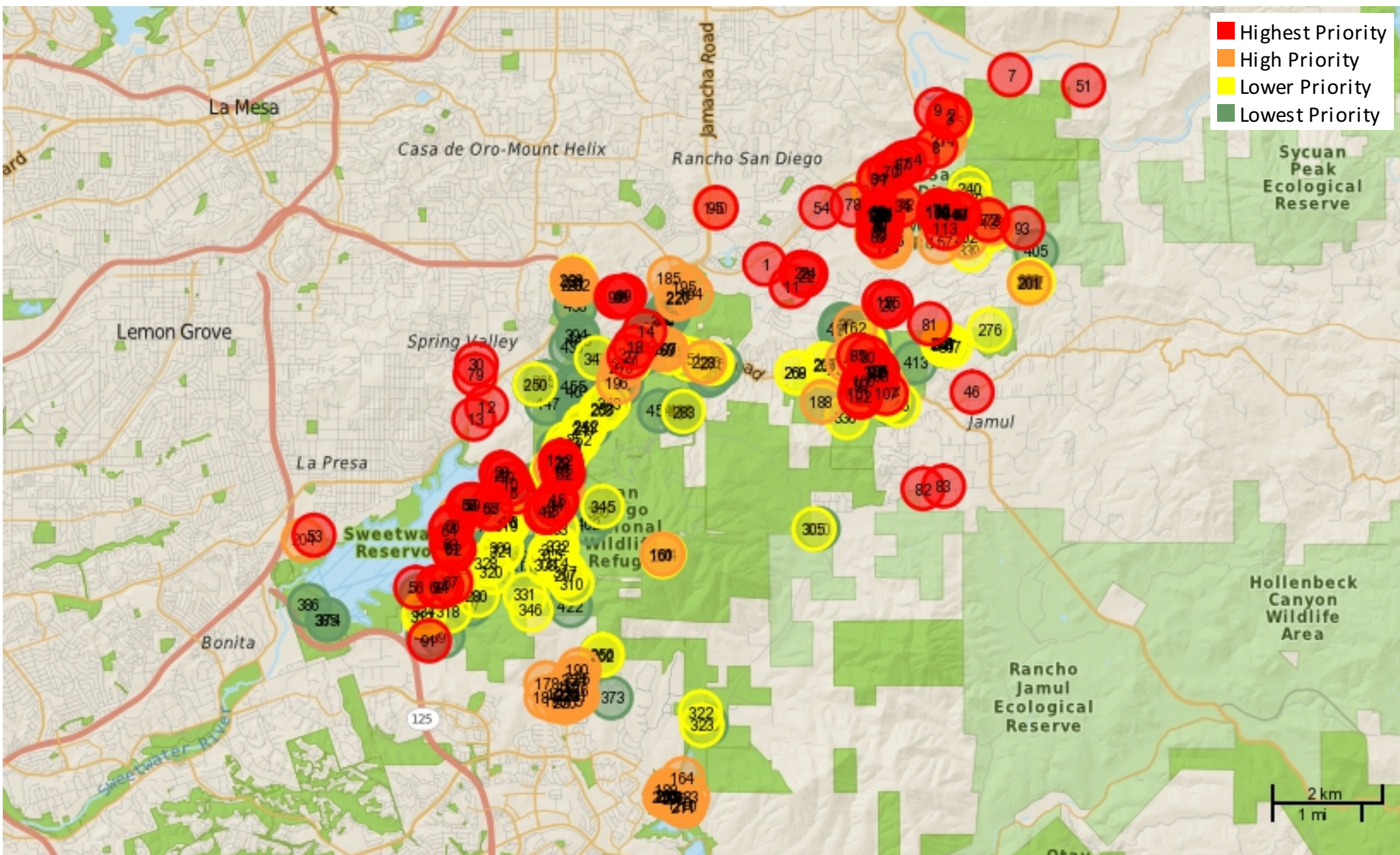
Map ID	Total Score	Species	CalFlora ID	Observed	Herbicide?
430	4.395	<a href="#">Pennisetum setaceum</a>	<a href="#">wb1312-212</a>	Heather Elwood, 2012-05-17	Yes
431	4.379	<a href="#">Dittrichia graveolens</a>	<a href="#">wb1309-55</a>	Dillon Harker, 2012-06-01	Yes
432	4.376	<a href="#">Chrysanthemum coronarium</a>	<a href="#">wb1309-19</a>	Dillon Harker, 2012-05-23	Yes
433	4.361	<a href="#">Nicotiana glauca</a>	<a href="#">wb1312-38</a>	Dillon Harker, 2012-05-23	Yes
434	4.345	<a href="#">Foeniculum vulgare</a>	<a href="#">wb1309-35</a>	Dillon Harker, 2012-05-29	Yes
435	4.323	<a href="#">Chrysanthemum coronarium</a>	<a href="#">wb1309-18</a>	Dillon Harker, 2012-05-23	Yes
436	4.323	<a href="#">Chrysanthemum coronarium</a>	<a href="#">wb1309-332</a>	Heather Elwood, 2012-05-21	Yes
437	4.304	<a href="#">Nicotiana glauca</a>	<a href="#">wb1311-266</a>	Parker Chapple, 2012-05-17	Yes
438	4.271	<a href="#">Chrysanthemum coronarium</a>	<a href="#">wb1309-21</a>	Dillon Harker, 2012-05-23	Yes
439	4.271	<a href="#">Chrysanthemum coronarium</a>	<a href="#">wb1307-15</a>	Heather Elwood, 2012-05-21	Yes
440	4.218	<a href="#">Chrysanthemum coronarium</a>	<a href="#">wb1309-322</a>	Heather Elwood, 2012-05-18	Yes
441	4.218	<a href="#">Chrysanthemum coronarium</a>	<a href="#">wb1308-29</a>	Parker Chapple, 2012-05-23	Yes
442	4.218	<a href="#">Chrysanthemum coronarium</a>	<a href="#">wb1309-321</a>	Heather Elwood, 2012-05-18	Yes
443	4.114	<a href="#">Pennisetum setaceum</a>	<a href="#">wb1312-53</a>	Dillon Harker, 2012-05-29	Yes
444	4.114	<a href="#">Pennisetum setaceum</a>	<a href="#">wb1311-281</a>	Parker Chapple, 2012-05-24	Yes
445	4.107	<a href="#">Pennisetum setaceum</a>	<a href="#">wb1311-105</a>	Dillon Harker, 2012-05-23	Yes
446	4.062	<a href="#">Pennisetum setaceum</a>	<a href="#">wb1312-98</a>	Dillon Harker, 2012-06-01	Yes
447	3.914	<a href="#">Pennisetum setaceum</a>	<a href="#">wb1312-224</a>	Heather Elwood, 2012-05-23	Yes
448	3.914	<a href="#">Pennisetum setaceum</a>	<a href="#">wb1312-40</a>	Dillon Harker, 2012-05-18	Yes
449	3.862	<a href="#">Pennisetum setaceum</a>	<a href="#">wb1312-225</a>	Heather Elwood, 2012-05-25	Yes
450	3.862	<a href="#">Pennisetum setaceum</a>	<a href="#">wb1311-284</a>	Parker Chapple, 2012-05-25	Yes
451	3.862	<a href="#">Pennisetum setaceum</a>	<a href="#">wb1312-227</a>	Heather Elwood, 2012-05-25	Yes
452	3.822	<a href="#">Nicotiana glauca</a>	<a href="#">wb1312-36</a>	Dillon Harker, 2012-05-21	Yes
453	3.809	<a href="#">Pennisetum setaceum</a>	<a href="#">wb1311-285</a>	Parker Chapple, 2012-05-25	Yes
454	3.809	<a href="#">Pennisetum setaceum</a>	<a href="#">wb1311-283</a>	Parker Chapple, 2012-05-24	Yes
455	3.809	<a href="#">Pennisetum setaceum</a>	<a href="#">wb1312-35</a>	Dillon Harker, 2012-05-21	Yes
456	3.809	<a href="#">Pennisetum setaceum</a>	<a href="#">wb1311-298</a>	Parker Chapple, 2012-06-05	Yes
457	3.717	<a href="#">Nicotiana glauca</a>	<a href="#">wb1312-37</a>	Dillon Harker, 2012-05-22	Yes
458	3.471	<a href="#">Pennisetum setaceum</a>	<a href="#">wb1311-289</a>	Parker Chapple, 2012-05-31	Yes
459	3.471	<a href="#">Pennisetum setaceum</a>	<a href="#">wb1312-99</a>	Dillon Harker, 2012-06-01	Yes
460	3.418	<a href="#">Pennisetum setaceum</a>	<a href="#">wb1312-228</a>	Heather Elwood, 2012-05-28	Yes
461	3.418	<a href="#">Pennisetum setaceum</a>	<a href="#">wb1312-77</a>	Dillon Harker, 2012-05-29	Yes
462	3.418	<a href="#">Pennisetum setaceum</a>	<a href="#">wb1311-292</a>	Parker Chapple, 2012-06-01	Yes



Map ID	Total Score	Species	CalFlora ID	Observed	Herbicide?
463	3.418	<a href="#">Pennisetum setaceum</a>	<a href="#">wb1312-229</a>	Heather Elwood, 2012-05-28	Yes
464	3.418	<a href="#">Pennisetum setaceum</a>	<a href="#">wb1311-282</a>	Parker Chapple, 2012-05-24	Yes



# SDNWR less abundant spp Prioritized Eradication Targets





SDNWR less abundant spp  
Prioritized Eradication Targets

Map ID	Total Score	Species	CalFlora ID	Observed	Herbicide?
1	7.765	<a href="#">Tamarix ramosissima</a>	<a href="#">wb786-17</a>	Giessow/Roth, 2007-06-14	Yes
2	7.608	<a href="#">Cortaderia selloana</a>	<a href="#">wb845-433</a>	Giessow/Roth, 2007-06-14	Yes
3	7.558	<a href="#">Tamarix ramosissima</a>	<a href="#">wb786-25</a>	Giessow/Roth, 2007-06-14	Yes
4	7.558	<a href="#">Tamarix ramosissima</a>	<a href="#">wb786-23</a>	Giessow/Roth, 2007-06-14	Yes
5	7.558	<a href="#">Tamarix ramosissima</a>	<a href="#">wb786-20</a>	Giessow/Roth, 2007-06-14	Yes
6	7.556	<a href="#">Cortaderia selloana</a>	<a href="#">wb845-396</a>	Giessow/Roth, 2007-06-14	Yes
7	7.556	<a href="#">Cortaderia selloana</a>	<a href="#">wb845-444</a>	Giessow/Roth, 2007-06-14	Yes
8	7.506	<a href="#">Tamarix ramosissima</a>	<a href="#">wb786-24</a>	Giessow/Roth, 2007-06-14	Yes
9	7.453	<a href="#">Tamarix ramosissima</a>	<a href="#">wb786-27</a>	Giessow/Roth, 2007-06-14	Yes
10	7.401	<a href="#">Tamarix ramosissima</a>	<a href="#">wb786-14</a>	Giessow/Roth, 2007-06-14	Yes
11	7.348	<a href="#">Cortaderia selloana</a>	<a href="#">wb849-449</a>	staff, 2007-06-14	Yes
12	7.348	<a href="#">Cortaderia selloana</a>	<a href="#">wb845-395</a>	Giessow/Roth, 2007-06-14	Yes
13	7.348	<a href="#">Cortaderia selloana</a>	<a href="#">wb845-394</a>	Giessow/Roth, 2007-06-14	Yes
14	7.348	<a href="#">Cortaderia selloana</a>	<a href="#">wb845-412</a>	Giessow/Roth, 2007-06-14	Yes
15	7.348	<a href="#">Cortaderia selloana</a>	<a href="#">wb845-430</a>	Giessow/Roth, 2007-06-14	Yes
16	7.333	<a href="#">Tamarix ramosissima</a>	<a href="#">wb786-22</a>	Giessow/Roth, 2007-06-14	Yes
17	7.333	<a href="#">Tamarix ramosissima</a>	<a href="#">wb786-21</a>	Giessow/Roth, 2007-06-14	Yes
18	7.296	<a href="#">Cortaderia selloana</a>	<a href="#">wb845-404</a>	Giessow/Roth, 2007-06-14	Yes
19	7.280	<a href="#">Tamarix ramosissima</a>	<a href="#">wb786-12</a>	Giessow/Roth, 2007-06-14	Yes
20	7.280	<a href="#">Tamarix ramosissima</a>	<a href="#">wb786-11</a>	Giessow/Roth, 2007-06-14	Yes
21	7.280	<a href="#">Tamarix ramosissima</a>	<a href="#">wb786-13</a>	Giessow/Roth, 2007-06-14	Yes
22	7.175	<a href="#">Cortaderia selloana</a>	<a href="#">wb849-447</a>	staff, 2007-06-14	Yes
23	7.175	<a href="#">Cortaderia selloana</a>	<a href="#">wb849-450</a>	staff, 2007-06-14	Yes
24	7.175	<a href="#">Cortaderia selloana</a>	<a href="#">wb849-448</a>	staff, 2007-06-14	Yes
25	7.175	<a href="#">Cortaderia selloana</a>	<a href="#">wb845-428</a>	Giessow/Roth, 2007-06-14	Yes
26	7.175	<a href="#">Cortaderia selloana</a>	<a href="#">wb845-429</a>	Giessow/Roth, 2007-06-14	Yes
27	7.123	<a href="#">Cortaderia selloana</a>	<a href="#">wb845-406</a>	Giessow/Roth, 2007-06-14	Yes
28	7.016	<a href="#">Brassica tournefortii</a>	<a href="#">wb1300-331</a>	Heather Elwood, 2012-06-04	Yes
29	7.016	<a href="#">Brassica tournefortii</a>	<a href="#">wb1300-330</a>	Heather Elwood, 2012-06-04	Yes
30	6.964	<a href="#">Tamarix ramosissima</a>	<a href="#">wb786-26</a>	Giessow/Roth, 2007-06-14	Yes
31	6.963	<a href="#">Brassica tournefortii</a>	<a href="#">wb1298-294</a>	Corey Ransom, 2012-05-11	Yes
32	6.963	<a href="#">Brassica tournefortii</a>	<a href="#">wb1298-219</a>	Corey Ransom, 2012-05-09	Yes
33	6.963	<a href="#">Brassica tournefortii</a>	<a href="#">wb1298-222</a>	Corey Ransom, 2012-05-09	Yes



SDNWR less abundant spp  
Prioritized Eradication Targets

Map ID	Total Score	Species	CalFlora ID	Observed	Herbicide?
34	6.963	<a href="#">Brassica tournefortii</a>	<a href="#">wb1298-291</a>	Corey Ransom, 2012-05-11	Yes
35	6.963	<a href="#">Brassica tournefortii</a>	<a href="#">wb1298-216</a>	Corey Ransom, 2012-05-09	Yes
36	6.963	<a href="#">Brassica tournefortii</a>	<a href="#">wb1298-220</a>	Corey Ransom, 2012-05-09	Yes
37	6.963	<a href="#">Brassica tournefortii</a>	<a href="#">wb1298-221</a>	Corey Ransom, 2012-05-09	Yes
38	6.963	<a href="#">Brassica tournefortii</a>	<a href="#">wb1298-218</a>	Corey Ransom, 2012-05-09	Yes
39	6.963	<a href="#">Brassica tournefortii</a>	<a href="#">wb1301-0</a>	Heather Elwood, 2012-06-07	Yes
40	6.963	<a href="#">Brassica tournefortii</a>	<a href="#">wb1300-114</a>	Dillon Harker, 2012-06-07	Yes
41	6.963	<a href="#">Brassica tournefortii</a>	<a href="#">wb1297-2</a>	Corey Ransom, 2012-05-11	Yes
42	6.957	<a href="#">Foeniculum vulgare</a>	<a href="#">wb1309-88</a>	Dillon Harker, 2012-06-04	Yes
43	6.957	<a href="#">Foeniculum vulgare</a>	<a href="#">wb1309-87</a>	Dillon Harker, 2012-06-04	Yes
44	6.957	<a href="#">Foeniculum vulgare</a>	<a href="#">wb1309-86</a>	Dillon Harker, 2012-06-04	Yes
45	6.957	<a href="#">Foeniculum vulgare</a>	<a href="#">wb1309-85</a>	Dillon Harker, 2012-06-04	Yes
46	6.931	<a href="#">Tamarix ramosissima</a>	<a href="#">wb787-96</a>	staff, 2007-06-14	Yes
47	6.911	<a href="#">Brassica tournefortii</a>	<a href="#">wb1300-135</a>	Corey Ransom, 2012-05-10	Yes
48	6.911	<a href="#">Brassica tournefortii</a>	<a href="#">wb1300-133</a>	Corey Ransom, 2012-05-10	Yes
49	6.911	<a href="#">Brassica tournefortii</a>	<a href="#">wb1298-227</a>	Corey Ransom, 2012-05-09	Yes
50	6.911	<a href="#">Brassica tournefortii</a>	<a href="#">wb1300-134</a>	Corey Ransom, 2012-05-10	Yes
51	6.860	<a href="#">Cortaderia selloana</a>	<a href="#">wb845-443</a>	Giessow/Roth, 2007-06-14	Yes
52	6.852	<a href="#">Foeniculum vulgare</a>	<a href="#">wb1309-83</a>	Dillon Harker, 2012-06-04	Yes
53	6.826	<a href="#">Cortaderia selloana</a>	<a href="#">wb845-416</a>	Giessow/Roth, 2007-06-14	Yes
54	6.826	<a href="#">Cortaderia selloana</a>	<a href="#">wb845-421</a>	Giessow/Roth, 2007-06-14	Yes
55	6.826	<a href="#">Cortaderia selloana</a>	<a href="#">wb845-434</a>	Giessow/Roth, 2007-06-14	Yes
56	6.800	<a href="#">Foeniculum vulgare</a>	<a href="#">wb1309-28</a>	Dillon Harker, 2012-05-28	Yes
57	6.800	<a href="#">Foeniculum vulgare</a>	<a href="#">wb1310-49</a>	Heather Elwood, 2012-05-29	Yes
58	6.800	<a href="#">Foeniculum vulgare</a>	<a href="#">wb1308-112</a>	Parker Chapple, 2012-05-29	Yes
59	6.800	<a href="#">Foeniculum vulgare</a>	<a href="#">wb1308-114</a>	Parker Chapple, 2012-05-29	Yes
60	6.800	<a href="#">Foeniculum vulgare</a>	<a href="#">wb1308-96</a>	Parker Chapple, 2012-05-29	Yes
61	6.800	<a href="#">Foeniculum vulgare</a>	<a href="#">wb1308-98</a>	Parker Chapple, 2012-05-29	Yes
62	6.800	<a href="#">Foeniculum vulgare</a>	<a href="#">wb1308-97</a>	Parker Chapple, 2012-05-29	Yes
63	6.800	<a href="#">Foeniculum vulgare</a>	<a href="#">wb1308-106</a>	Parker Chapple, 2012-05-29	Yes
64	6.800	<a href="#">Foeniculum vulgare</a>	<a href="#">wb1308-107</a>	Parker Chapple, 2012-05-29	Yes
65	6.800	<a href="#">Foeniculum vulgare</a>	<a href="#">wb1308-115</a>	Parker Chapple, 2012-05-29	Yes
66	6.800	<a href="#">Foeniculum vulgare</a>	<a href="#">wb1308-109</a>	Parker Chapple, 2012-05-29	Yes



SDNWR less abundant spp  
Prioritized Eradication Targets

Map ID	Total Score	Species	CalFlora ID	Observed	Herbicide?
67	6.800	<a href="#">Foeniculum vulgare</a>	<a href="#">wb1308-94</a>	Parker Chapple, 2012-05-29	Yes
68	6.800	<a href="#">Foeniculum vulgare</a>	<a href="#">wb1308-113</a>	Parker Chapple, 2012-05-29	Yes
69	6.800	<a href="#">Foeniculum vulgare</a>	<a href="#">wb1309-82</a>	Dillon Harker, 2012-06-04	Yes
70	6.776	<a href="#">Tamarix ramosissima</a>	<a href="#">wb786-19</a>	Giessow/Roth, 2007-06-14	Yes
71	6.770	<a href="#">Ehrharta calycina</a>	<a href="#">wb1307-267</a>	Corey Ransom, 2012-05-11	Yes
72	6.748	<a href="#">Foeniculum vulgare</a>	<a href="#">wb1309-135</a>	Heather Elwood, 2012-05-10	Yes
73	6.718	<a href="#">Ehrharta calycina</a>	<a href="#">wb1309-110</a>	Dillon Harker, 2012-06-06	Yes
74	6.718	<a href="#">Ehrharta calycina</a>	<a href="#">wb1309-111</a>	Dillon Harker, 2012-06-06	Yes
75	6.718	<a href="#">Ehrharta calycina</a>	<a href="#">wb1309-112</a>	Dillon Harker, 2012-06-06	Yes
76	6.718	<a href="#">Ehrharta calycina</a>	<a href="#">wb1309-115</a>	Heather Elwood, 2012-05-09	Yes
77	6.708	<a href="#">Tamarix ramosissima</a>	<a href="#">wb786-18</a>	Giessow/Roth, 2007-06-14	Yes
78	6.671	<a href="#">Tamarix ramosissima</a>	<a href="#">wb786-15</a>	Giessow/Roth, 2007-06-14	Yes
79	6.652	<a href="#">Cortaderia selloana</a>	<a href="#">wb845-431</a>	Giessow/Roth, 2007-06-14	Yes
80	6.619	<a href="#">Cortaderia selloana</a>	<a href="#">wb845-400</a>	Giessow/Roth, 2007-06-14	Yes
81	6.619	<a href="#">Cortaderia selloana</a>	<a href="#">wb849-446</a>	staff, 2007-06-14	Yes
82	6.619	<a href="#">Tamarix ramosissima</a>	<a href="#">wb787-92</a>	staff, 2007-06-14	Yes
83	6.619	<a href="#">Tamarix ramosissima</a>	<a href="#">wb787-93</a>	staff, 2007-06-14	Yes
84	6.603	<a href="#">Tamarix ramosissima</a>	<a href="#">wb786-16</a>	Giessow/Roth, 2007-06-14	Yes
85	6.567	<a href="#">Cortaderia selloana</a>	<a href="#">wb845-403</a>	Giessow/Roth, 2007-06-14	Yes
86	6.566	<a href="#">Brassica tournefortii</a>	<a href="#">wb1300-120</a>	Corey Ransom, 2012-05-09	Yes
87	6.566	<a href="#">Brassica tournefortii</a>	<a href="#">wb1297-0</a>	Corey Ransom, 2012-05-11	Yes
88	6.566	<a href="#">Brassica tournefortii</a>	<a href="#">wb1297-1</a>	Corey Ransom, 2012-05-11	Yes
89	6.513	<a href="#">Brassica tournefortii</a>	<a href="#">wb1300-123</a>	Corey Ransom, 2012-05-09	Yes
90	6.464	<a href="#">Tamarix ramosissima</a>	<a href="#">wb1311-321</a>	Kimberly Edvarchuk, 2012-05-15	Yes
91	6.455	<a href="#">Foeniculum vulgare</a>	<a href="#">wb1307-20</a>	Heather Elwood, 2012-05-28	Yes
92	6.446	<a href="#">Cortaderia selloana</a>	<a href="#">wb845-402</a>	Giessow/Roth, 2007-06-14	Yes
93	6.403	<a href="#">Onopordum acanthium</a>	<a href="#">wb1312-176</a>	Heather Elwood, 2012-05-10	Yes
94	6.402	<a href="#">Foeniculum vulgare</a>	<a href="#">wb1307-23</a>	Heather Elwood, 2012-05-29	Yes
95	6.397	<a href="#">Tamarix ramosissima</a>	<a href="#">wb786-28</a>	Giessow/Roth, 2007-06-14	Yes
96	6.393	<a href="#">Cortaderia selloana</a>	<a href="#">wb845-399</a>	Giessow/Roth, 2007-06-14	Yes
97	6.393	<a href="#">Cortaderia selloana</a>	<a href="#">wb845-401</a>	Giessow/Roth, 2007-06-14	Yes
98	6.393	<a href="#">Cortaderia selloana</a>	<a href="#">wb845-398</a>	Giessow/Roth, 2007-06-14	Yes
99	6.393	<a href="#">Cortaderia selloana</a>	<a href="#">wb845-397</a>	Giessow/Roth, 2007-06-14	Yes





SDNWR less abundant spp  
Prioritized Eradication Targets

Map ID	Total Score	Species	CalFlora ID	Observed	Herbicide?
100	6.359	<a href="#">Tamarix ramosissima</a>	<a href="#">wb1311-322</a>	Kimberly Edvarchuk, 2012-05-15	Yes
101	6.359	<a href="#">Tamarix ramosissima</a>	<a href="#">wb1311-355</a>	Kimberly Edvarchuk, 2012-05-15	Yes
102	6.359	<a href="#">Tamarix ramosissima</a>	<a href="#">wb1311-353</a>	Kimberly Edvarchuk, 2012-05-15	Yes
103	6.320	<a href="#">Delairea odorata</a>	<a href="#">wb1308-330</a>	Dillon Harker, 2012-05-18	Yes
104	6.320	<a href="#">Delairea odorata</a>	<a href="#">wb729-20</a>	Giessow/Roth, 2007-06-14	Yes
105	6.320	<a href="#">Delairea odorata</a>	<a href="#">wb459-24</a>	Giessow/Roth, 2009-01-01	Yes
106	6.320	<a href="#">Delairea odorata</a>	<a href="#">wb1308-331</a>	Dillon Harker, 2012-05-18	Yes
107	6.320	<a href="#">Delairea odorata</a>	<a href="#">wb1308-326</a>	Dillon Harker, 2012-05-18	Yes
108	6.320	<a href="#">Ehrharta calycina</a>	<a href="#">wb1310-78</a>	Heather Elwood, 2012-05-09	Yes
109	6.320	<a href="#">Ehrharta calycina</a>	<a href="#">wb1307-26</a>	Heather Elwood, 2012-05-09	Yes
110	6.320	<a href="#">Ehrharta calycina</a>	<a href="#">wb1307-6</a>	Heather Elwood, 2012-05-09	Yes
111	6.320	<a href="#">Ehrharta calycina</a>	<a href="#">wb1307-260</a>	Heather Elwood, 2012-05-09	Yes
112	6.320	<a href="#">Brassica tournefortii</a>	<a href="#">wb1300-329</a>	Heather Elwood, 2012-06-04	Yes
113	6.288	<a href="#">Cortaderia selloana</a>	<a href="#">wb1308-284</a>	Dillon Harker, 2012-05-14	Yes
114	6.267	<a href="#">Brassica tournefortii</a>	<a href="#">wb1300-119</a>	Corey Ransom, 2012-05-09	Yes
115	6.267	<a href="#">Brassica tournefortii</a>	<a href="#">wb1298-224</a>	Corey Ransom, 2012-05-09	Yes
116	6.267	<a href="#">Brassica tournefortii</a>	<a href="#">wb1301-1</a>	Heather Elwood, 2012-06-07	Yes
117	6.267	<a href="#">Brassica tournefortii</a>	<a href="#">wb1300-127</a>	Corey Ransom, 2012-05-09	Yes
118	6.267	<a href="#">Brassica tournefortii</a>	<a href="#">wb1301-2</a>	Heather Elwood, 2012-06-07	Yes
119	6.267	<a href="#">Brassica tournefortii</a>	<a href="#">wb1298-293</a>	Corey Ransom, 2012-05-11	Yes
120	6.267	<a href="#">Brassica tournefortii</a>	<a href="#">wb1298-215</a>	Corey Ransom, 2012-05-09	Yes
121	6.267	<a href="#">Brassica tournefortii</a>	<a href="#">wb1300-115</a>	Corey Ransom, 2012-05-09	Yes
122	6.267	<a href="#">Brassica tournefortii</a>	<a href="#">wb1300-118</a>	Corey Ransom, 2012-05-09	Yes
123	6.267	<a href="#">Brassica tournefortii</a>	<a href="#">wb1300-117</a>	Corey Ransom, 2012-05-09	Yes
124	6.267	<a href="#">Brassica tournefortii</a>	<a href="#">wb1299-148</a>	Parker Chapple, 2012-05-09	Yes
125	6.267	<a href="#">Brassica tournefortii</a>	<a href="#">wb1300-116</a>	Corey Ransom, 2012-05-09	Yes
126	6.267	<a href="#">Brassica tournefortii</a>	<a href="#">wb1299-147</a>	Parker Chapple, 2012-06-07	Yes
127	6.267	<a href="#">Brassica tournefortii</a>	<a href="#">wb1298-223</a>	Corey Ransom, 2012-05-09	Yes
128	6.267	<a href="#">Brassica tournefortii</a>	<a href="#">wb1300-122</a>	Corey Ransom, 2012-05-09	Yes
129	6.267	<a href="#">Brassica tournefortii</a>	<a href="#">wb1300-121</a>	Corey Ransom, 2012-05-09	Yes
130	6.267	<a href="#">Brassica tournefortii</a>	<a href="#">wb1298-225</a>	Corey Ransom, 2012-05-09	Yes
131	6.267	<a href="#">Brassica tournefortii</a>	<a href="#">wb1300-158</a>	Heather Elwood, 2012-05-09	Yes
132	6.267	<a href="#">Brassica tournefortii</a>	<a href="#">wb1301-3</a>	Heather Elwood, 2012-05-09	Yes



SDNWR less abundant spp  
Prioritized Eradication Targets

Map ID	Total Score	Species	CalFlora ID	Observed	Herbicide?
133	6.267	<a href="#">Brassica tournefortii</a>	<a href="#">wb1298-228</a>	Corey Ransom, 2012-05-09	Yes
134	6.267	<a href="#">Brassica tournefortii</a>	<a href="#">wb1299-146</a>	Parker Chapple, 2012-06-07	Yes
135	6.267	<a href="#">Brassica tournefortii</a>	<a href="#">wb1298-290</a>	Corey Ransom, 2012-05-11	Yes
136	6.267	<a href="#">Brassica tournefortii</a>	<a href="#">wb1298-289</a>	Corey Ransom, 2012-05-11	Yes
137	6.267	<a href="#">Brassica tournefortii</a>	<a href="#">wb1298-217</a>	Corey Ransom, 2012-05-09	Yes
138	6.267	<a href="#">Brassica tournefortii</a>	<a href="#">wb1300-148</a>	Corey Ransom, 2012-05-10	Yes
139	6.261	<a href="#">Foeniculum vulgare</a>	<a href="#">wb1309-84</a>	Dillon Harker, 2012-06-04	Yes
140	6.240	<a href="#">Cortaderia selloana</a>	<a href="#">wb845-435</a>	Giessow/Roth, 2007-06-14	Yes
141	6.237	<a href="#">Vinca major</a>	<a href="#">wb1312-28</a>	Dillon Harker, 2012-05-18	Yes
142	6.215	<a href="#">Delairea odorata</a>	<a href="#">wb729-19</a>	Giessow/Roth, 2007-06-14	Yes
143	6.215	<a href="#">Delairea odorata</a>	<a href="#">wb1307-218</a>	Heather Elwood, 2012-05-18	Yes
144	6.215	<a href="#">Delairea odorata</a>	<a href="#">wb459-23</a>	Giessow/Roth, 2009-01-01	Yes
145	6.215	<a href="#">Delairea odorata</a>	<a href="#">wb1308-334</a>	Dillon Harker, 2012-05-18	Yes
146	6.215	<a href="#">Delairea odorata</a>	<a href="#">wb1308-335</a>	Dillon Harker, 2012-05-18	Yes
147	6.215	<a href="#">Brassica tournefortii</a>	<a href="#">wb1300-132</a>	Corey Ransom, 2012-05-10	Yes
148	6.215	<a href="#">Brassica tournefortii</a>	<a href="#">wb1300-166</a>	Heather Elwood, 2012-05-09	Yes
149	6.215	<a href="#">Brassica tournefortii</a>	<a href="#">wb1298-247</a>	Corey Ransom, 2012-05-10	Yes
150	6.215	<a href="#">Brassica tournefortii</a>	<a href="#">wb1300-165</a>	Heather Elwood, 2012-05-09	Yes
151	6.215	<a href="#">Brassica tournefortii</a>	<a href="#">wb1300-131</a>	Corey Ransom, 2012-05-10	Yes
152	6.215	<a href="#">Brassica tournefortii</a>	<a href="#">wb1300-164</a>	Heather Elwood, 2012-05-09	Yes
153	6.215	<a href="#">Brassica tournefortii</a>	<a href="#">wb1300-130</a>	Corey Ransom, 2012-05-10	Yes
154	6.215	<a href="#">Brassica tournefortii</a>	<a href="#">wb1300-136</a>	Corey Ransom, 2012-05-10	Yes
155	6.215	<a href="#">Brassica tournefortii</a>	<a href="#">wb1300-163</a>	Heather Elwood, 2012-05-09	Yes
156	6.215	<a href="#">Brassica tournefortii</a>	<a href="#">wb1300-125</a>	Corey Ransom, 2012-05-09	Yes
157	6.215	<a href="#">Brassica tournefortii</a>	<a href="#">wb1298-295</a>	Parker Chapple, 2012-05-14	Yes
158	6.215	<a href="#">Brassica tournefortii</a>	<a href="#">wb1299-149</a>	Parker Chapple, 2012-05-09	Yes
159	6.215	<a href="#">Brassica tournefortii</a>	<a href="#">wb1300-171</a>	Heather Elwood, 2012-05-10	Yes
160	6.209	<a href="#">Foeniculum vulgare</a>	<a href="#">wb1308-165</a>	Parker Chapple, 2012-06-05	Yes
161	6.209	<a href="#">Foeniculum vulgare</a>	<a href="#">wb1308-164</a>	Parker Chapple, 2012-06-05	Yes
162	6.182	<a href="#">Brassica tournefortii</a>	<a href="#">wb1300-237</a>	Heather Elwood, 2012-05-17	Yes
163	6.156	<a href="#">Foeniculum vulgare</a>	<a href="#">wb1309-329</a>	Heather Elwood, 2012-05-21	Yes
164	6.138	<a href="#">Tamarix ramosissima</a>	<a href="#">wb787-495</a>	staff, 2005-07-30	Yes
165	6.132	<a href="#">Vinca major</a>	<a href="#">wb1311-275</a>	Parker Chapple, 2012-05-18	Yes



SDNWR less abundant spp  
Prioritized Eradication Targets

Map ID	Total Score	Species	CalFlora ID	Observed	Herbicide?
166	6.104	<a href="#">Foeniculum vulgare</a>	<a href="#">wb1308-110</a>	Parker Chapple, 2012-05-29	Yes
167	6.104	<a href="#">Foeniculum vulgare</a>	<a href="#">wb1309-81</a>	Dillon Harker, 2012-06-04	Yes
168	6.104	<a href="#">Foeniculum vulgare</a>	<a href="#">wb1308-4</a>	Parker Chapple, 2012-05-21	Yes
169	6.104	<a href="#">Foeniculum vulgare</a>	<a href="#">wb1310-45</a>	Heather Elwood, 2012-05-29	Yes
170	6.074	<a href="#">Ehrharta calycina</a>	<a href="#">wb1307-268</a>	Corey Ransom, 2012-05-11	Yes
171	6.071	<a href="#">Foeniculum vulgare</a>	<a href="#">wb1309-260</a>	Heather Elwood, 2012-05-15	Yes
172	6.071	<a href="#">Foeniculum vulgare</a>	<a href="#">wb1308-327</a>	Dillon Harker, 2012-05-18	Yes
173	6.052	<a href="#">Foeniculum vulgare</a>	<a href="#">wb1309-114</a>	Corey Ransom, 2012-05-10	Yes
174	6.052	<a href="#">Foeniculum vulgare</a>	<a href="#">wb1307-263</a>	Corey Ransom, 2012-05-10	Yes
175	6.033	<a href="#">Tamarix ramosissima</a>	<a href="#">wb787-85</a>	staff, 2007-06-14	Yes
176	6.033	<a href="#">Tamarix ramosissima</a>	<a href="#">wb787-86</a>	staff, 2007-06-14	Yes
177	6.033	<a href="#">Tamarix ramosissima</a>	<a href="#">wb787-87</a>	staff, 2007-06-14	Yes
178	6.033	<a href="#">Tamarix ramosissima</a>	<a href="#">wb787-88</a>	staff, 2007-06-14	Yes
179	6.033	<a href="#">Tamarix ramosissima</a>	<a href="#">wb787-490</a>	staff, 2005-07-30	Yes
180	6.033	<a href="#">Tamarix ramosissima</a>	<a href="#">wb787-90</a>	staff, 2007-06-14	Yes
181	6.031	<a href="#">Pennisetum setaceum</a>	<a href="#">wb1312-226</a>	Heather Elwood, 2012-05-25	Yes
182	6.022	<a href="#">Ehrharta calycina</a>	<a href="#">wb1310-77</a>	Heather Elwood, 2012-05-09	Yes
183	5.980	<a href="#">Tamarix ramosissima</a>	<a href="#">wb787-91</a>	staff, 2007-06-14	Yes
184	5.980	<a href="#">Cortaderia selloana</a>	<a href="#">wb850-449</a>	staff, 2007-06-14	Yes
185	5.980	<a href="#">Cortaderia selloana</a>	<a href="#">wb845-411</a>	Giessow/Roth, 2007-06-14	Yes
186	5.978	<a href="#">Pennisetum setaceum</a>	<a href="#">wb1312-29</a>	Dillon Harker, 2012-05-18	Yes
187	5.978	<a href="#">Pennisetum setaceum</a>	<a href="#">wb1312-27</a>	Dillon Harker, 2012-05-18	Yes
188	5.966	<a href="#">Foeniculum vulgare</a>	<a href="#">wb1307-303</a>	Parker Chapple, 2012-05-15	Yes
189	5.928	<a href="#">Cortaderia selloana</a>	<a href="#">wb850-464</a>	staff, 2007-06-14	Yes
190	5.928	<a href="#">Cortaderia selloana</a>	<a href="#">wb850-467</a>	staff, 2007-06-14	Yes
191	5.928	<a href="#">Cortaderia selloana</a>	<a href="#">wb850-463</a>	staff, 2007-06-14	Yes
192	5.928	<a href="#">Cortaderia selloana</a>	<a href="#">wb850-456</a>	staff, 2007-06-14	Yes
193	5.928	<a href="#">Cortaderia selloana</a>	<a href="#">wb850-455</a>	staff, 2007-06-14	Yes
194	5.928	<a href="#">Cortaderia selloana</a>	<a href="#">wb845-417</a>	Giessow/Roth, 2007-06-14	Yes
195	5.928	<a href="#">Cortaderia selloana</a>	<a href="#">wb845-418</a>	Giessow/Roth, 2007-06-14	Yes
196	5.928	<a href="#">Cortaderia selloana</a>	<a href="#">wb845-410</a>	Giessow/Roth, 2007-06-14	Yes
197	5.926	<a href="#">Pennisetum setaceum</a>	<a href="#">wb1312-222</a>	Heather Elwood, 2012-05-21	Yes
198	5.922	<a href="#">Delairea odorata</a>	<a href="#">wb1307-219</a>	Heather Elwood, 2012-05-18	Yes



SDNWR less abundant spp  
Prioritized Eradication Targets

Map ID	Total Score	Species	CalFlora ID	Observed	Herbicide?
199	5.922	<a href="#">Delairea odorata</a>	<a href="#">wb1308-333</a>	Dillon Harker, 2012-05-18	Yes
200	5.922	<a href="#">Delairea odorata</a>	<a href="#">wb1308-329</a>	Dillon Harker, 2012-05-18	Yes
201	5.873	<a href="#">Pennisetum setaceum</a>	<a href="#">wb1312-195</a>	Heather Elwood, 2012-05-16	Yes
202	5.873	<a href="#">Pennisetum setaceum</a>	<a href="#">wb1312-183</a>	Heather Elwood, 2012-05-11	Yes
203	5.873	<a href="#">Pennisetum setaceum</a>	<a href="#">wb1312-63</a>	Dillon Harker, 2012-05-29	Yes
204	5.871	<a href="#">Cortaderia selloana</a>	<a href="#">wb845-415</a>	Giessow/Roth, 2007-06-14	Yes
205	5.860	<a href="#">Tamarix ramosissima</a>	<a href="#">wb787-489</a>	staff, 2005-07-30	Yes
206	5.860	<a href="#">Tamarix ramosissima</a>	<a href="#">wb787-487</a>	staff, 2005-07-30	Yes
207	5.860	<a href="#">Tamarix ramosissima</a>	<a href="#">wb787-486</a>	staff, 2005-07-30	Yes
208	5.860	<a href="#">Tamarix ramosissima</a>	<a href="#">wb787-488</a>	staff, 2005-07-30	Yes
209	5.834	<a href="#">Nicotiana glauca</a>	<a href="#">wb1311-280</a>	Parker Chapple, 2012-05-21	Yes
210	5.807	<a href="#">Tamarix ramosissima</a>	<a href="#">wb787-492</a>	staff, 2005-07-30	Yes
211	5.807	<a href="#">Tamarix ramosissima</a>	<a href="#">wb787-491</a>	staff, 2005-07-30	Yes
212	5.807	<a href="#">Tamarix ramosissima</a>	<a href="#">wb787-484</a>	staff, 2005-07-30	Yes
213	5.807	<a href="#">Tamarix ramosissima</a>	<a href="#">wb787-485</a>	staff, 2005-07-30	Yes
214	5.781	<a href="#">Nicotiana glauca</a>	<a href="#">wb1311-262</a>	Parker Chapple, 2012-05-16	Yes
215	5.781	<a href="#">Nicotiana glauca</a>	<a href="#">wb1311-260</a>	Parker Chapple, 2012-05-16	Yes
216	5.755	<a href="#">Cortaderia selloana</a>	<a href="#">wb845-409</a>	Giessow/Roth, 2007-06-14	Yes
217	5.755	<a href="#">Cortaderia selloana</a>	<a href="#">wb845-405</a>	Giessow/Roth, 2007-06-14	Yes
218	5.755	<a href="#">Cortaderia selloana</a>	<a href="#">wb845-408</a>	Giessow/Roth, 2007-06-14	Yes
219	5.755	<a href="#">Cortaderia selloana</a>	<a href="#">wb845-407</a>	Giessow/Roth, 2007-06-14	Yes
220	5.755	<a href="#">Cortaderia selloana</a>	<a href="#">wb850-461</a>	staff, 2007-06-14	Yes
221	5.755	<a href="#">Cortaderia selloana</a>	<a href="#">wb850-462</a>	staff, 2007-06-14	Yes
222	5.755	<a href="#">Cortaderia selloana</a>	<a href="#">wb850-457</a>	staff, 2007-06-14	Yes
223	5.755	<a href="#">Cortaderia selloana</a>	<a href="#">wb850-458</a>	staff, 2007-06-14	Yes
224	5.755	<a href="#">Cortaderia selloana</a>	<a href="#">wb850-465</a>	staff, 2007-06-14	Yes
225	5.755	<a href="#">Cortaderia selloana</a>	<a href="#">wb850-466</a>	staff, 2007-06-14	Yes
226	5.755	<a href="#">Cortaderia selloana</a>	<a href="#">wb845-419</a>	Giessow/Roth, 2007-06-14	Yes
227	5.755	<a href="#">Cortaderia selloana</a>	<a href="#">wb845-420</a>	Giessow/Roth, 2007-06-14	Yes
228	5.734	<a href="#">Delairea odorata</a>	<a href="#">wb1309-13</a>	Dillon Harker, 2012-05-21	Yes
229	5.697	<a href="#">Cortaderia selloana</a>	<a href="#">wb845-422</a>	Giessow/Roth, 2007-06-14	Yes
230	5.697	<a href="#">Cortaderia selloana</a>	<a href="#">wb845-423</a>	Giessow/Roth, 2007-06-14	Yes
231	5.697	<a href="#">Cortaderia selloana</a>	<a href="#">wb845-426</a>	Giessow/Roth, 2007-06-14	Yes



SDNWR less abundant spp  
Prioritized Eradication Targets

Map ID	Total Score	Species	CalFlora ID	Observed	Herbicide?
232	5.697	<a href="#">Cortaderia selloana</a>	<a href="#">wb845-425</a>	Giessow/Roth, 2007-06-14	Yes
233	5.697	<a href="#">Cortaderia selloana</a>	<a href="#">wb845-424</a>	Giessow/Roth, 2007-06-14	Yes
234	5.697	<a href="#">Cortaderia selloana</a>	<a href="#">wb845-427</a>	Giessow/Roth, 2007-06-14	Yes
235	5.691	<a href="#">Chrysanthemum coronarium</a>	<a href="#">wb1309-330</a>	Heather Elwood, 2012-05-21	Yes
236	5.681	<a href="#">Delairea odorata</a>	<a href="#">wb1309-14</a>	Dillon Harker, 2012-05-21	Yes
237	5.677	<a href="#">Nicotiana glauca</a>	<a href="#">wb1312-50</a>	Dillon Harker, 2012-05-29	Yes
238	5.658	<a href="#">Chrysanthemum coronarium</a>	<a href="#">wb1309-317</a>	Heather Elwood, 2012-05-18	Yes
239	5.629	<a href="#">Vinca major</a>	<a href="#">wb1312-221</a>	Heather Elwood, 2012-05-18	Yes
240	5.624	<a href="#">Nicotiana glauca</a>	<a href="#">wb1311-257</a>	Corey Ransom, 2012-05-09	Yes
241	5.537	<a href="#">Foeniculum vulgare</a>	<a href="#">wb1310-32</a>	Heather Elwood, 2012-05-25	Yes
242	5.537	<a href="#">Foeniculum vulgare</a>	<a href="#">wb1308-30</a>	Parker Chapple, 2012-05-25	Yes
243	5.537	<a href="#">Foeniculum vulgare</a>	<a href="#">wb1310-28</a>	Heather Elwood, 2012-05-24	Yes
244	5.528	<a href="#">Pennisetum setaceum</a>	<a href="#">wb1311-300</a>	Parker Chapple, 2012-06-05	Yes
245	5.524	<a href="#">Vinca major</a>	<a href="#">wb1312-219</a>	Heather Elwood, 2012-05-18	Yes
246	5.519	<a href="#">Delairea odorata</a>	<a href="#">wb1309-318</a>	Heather Elwood, 2012-05-18	Yes
247	5.501	<a href="#">Chrysanthemum coronarium</a>	<a href="#">wb1307-342</a>	Parker Chapple, 2012-05-17	Yes
248	5.484	<a href="#">Foeniculum vulgare</a>	<a href="#">wb1310-38</a>	Heather Elwood, 2012-05-25	Yes
249	5.484	<a href="#">Foeniculum vulgare</a>	<a href="#">wb1309-79</a>	Dillon Harker, 2012-06-04	Yes
250	5.484	<a href="#">Foeniculum vulgare</a>	<a href="#">wb1309-337</a>	Heather Elwood, 2012-05-23	Yes
251	5.484	<a href="#">Foeniculum vulgare</a>	<a href="#">wb1309-331</a>	Heather Elwood, 2012-05-21	Yes
252	5.484	<a href="#">Foeniculum vulgare</a>	<a href="#">wb1309-75</a>	Dillon Harker, 2012-06-04	Yes
253	5.484	<a href="#">Foeniculum vulgare</a>	<a href="#">wb1310-30</a>	Heather Elwood, 2012-05-25	Yes
254	5.471	<a href="#">Vinca major</a>	<a href="#">wb1311-276</a>	Parker Chapple, 2012-05-18	Yes
255	5.467	<a href="#">Nicotiana glauca</a>	<a href="#">wb453-79</a>	Todd Keeler-Wolf, Jonathan Dunn, 2009-05-20	Yes
256	5.432	<a href="#">Foeniculum vulgare</a>	<a href="#">wb1308-163</a>	Parker Chapple, 2012-06-05	Yes
257	5.432	<a href="#">Foeniculum vulgare</a>	<a href="#">wb1309-78</a>	Dillon Harker, 2012-06-04	Yes
258	5.432	<a href="#">Foeniculum vulgare</a>	<a href="#">wb1309-73</a>	Dillon Harker, 2012-06-04	Yes
259	5.432	<a href="#">Foeniculum vulgare</a>	<a href="#">wb1309-77</a>	Dillon Harker, 2012-06-04	Yes
260	5.432	<a href="#">Foeniculum vulgare</a>	<a href="#">wb1309-76</a>	Dillon Harker, 2012-06-04	Yes
261	5.432	<a href="#">Foeniculum vulgare</a>	<a href="#">wb1309-72</a>	Dillon Harker, 2012-06-01	Yes
262	5.432	<a href="#">Foeniculum vulgare</a>	<a href="#">wb1308-162</a>	Parker Chapple, 2012-06-05	Yes
263	5.432	<a href="#">Foeniculum vulgare</a>	<a href="#">wb1309-74</a>	Dillon Harker, 2012-06-04	Yes
264	5.432	<a href="#">Foeniculum vulgare</a>	<a href="#">wb1309-0</a>	Dillon Harker, 2012-05-18	Yes



Map ID	Total Score	Species	CalFlora ID	Observed	Herbicide?
265	5.427	<a href="#">Foeniculum vulgare</a>	<a href="#">wb1308-262</a>	Kimberly Edvarchuk, 2012-05-15	Yes
266	5.427	<a href="#">Foeniculum vulgare</a>	<a href="#">wb1309-261</a>	Heather Elwood, 2012-05-15	Yes
267	5.375	<a href="#">Foeniculum vulgare</a>	<a href="#">wb1308-336</a>	Dillon Harker, 2012-05-18	Yes
268	5.369	<a href="#">Vinca major</a>	<a href="#">wb459-30</a>	Giessow/Roth, 2009-01-01	Yes
269	5.369	<a href="#">Vinca major</a>	<a href="#">wb835-3</a>	Giessow/Roth, 2007-06-14	Yes
270	5.337	<a href="#">Dittrichia graveolens</a>	<a href="#">wb1308-285</a>	Dillon Harker, 2012-05-14	Yes
271	5.331	<a href="#">Nicotiana glauca</a>	<a href="#">wb1311-10</a>	Heather Elwood, 2012-05-16	Yes
272	5.308	<a href="#">Ailanthus altissima</a>	<a href="#">wb1299-205</a>	Kimberly Edvarchuk, 2012-05-15	Yes
273	5.308	<a href="#">Ailanthus altissima</a>	<a href="#">wb1299-204</a>	Kimberly Edvarchuk, 2012-05-15	Yes
274	5.308	<a href="#">Ailanthus altissima</a>	<a href="#">wb1299-203</a>	Kimberly Edvarchuk, 2012-05-15	Yes
275	5.284	<a href="#">Delairea odorata</a>	<a href="#">wb1307-4</a>	Dillon Harker, 2012-05-21	Yes
276	5.282	<a href="#">Pennisetum setaceum</a>	<a href="#">wb1312-189</a>	Heather Elwood, 2012-05-16	Yes
277	5.264	<a href="#">Vinca major</a>	<a href="#">wb459-21</a>	Giessow/Roth, 2009-01-01	Yes
278	5.264	<a href="#">Vinca major</a>	<a href="#">wb835-1</a>	Giessow/Roth, 2007-06-14	Yes
279	5.264	<a href="#">Vinca major</a>	<a href="#">wb835-2</a>	Giessow/Roth, 2007-06-14	Yes
280	5.257	<a href="#">Brassica tournefortii</a>	<a href="#">wb1299-41</a>	Parker Chapple, 2012-05-28	Yes
281	5.230	<a href="#">Pennisetum setaceum</a>	<a href="#">wb1311-299</a>	Parker Chapple, 2012-06-05	Yes
282	5.230	<a href="#">Pennisetum setaceum</a>	<a href="#">wb1312-101</a>	Dillon Harker, 2012-06-04	Yes
283	5.205	<a href="#">Brassica tournefortii</a>	<a href="#">wb1300-254</a>	Heather Elwood, 2012-05-24	Yes
284	5.196	<a href="#">Pennisetum setaceum</a>	<a href="#">wb1311-177</a>	Heather Elwood, 2012-05-18	Yes
285	5.196	<a href="#">Pennisetum setaceum</a>	<a href="#">wb1312-25</a>	Dillon Harker, 2012-05-18	Yes
286	5.196	<a href="#">Pennisetum setaceum</a>	<a href="#">wb1311-176</a>	Heather Elwood, 2012-05-18	Yes
287	5.196	<a href="#">Pennisetum setaceum</a>	<a href="#">wb1312-26</a>	Dillon Harker, 2012-05-18	Yes
288	5.196	<a href="#">Mesembryanthemum crystallinum</a>	<a href="#">wb1311-269</a>	Parker Chapple, 2012-05-17	Yes
289	5.196	<a href="#">Pennisetum setaceum</a>	<a href="#">wb1312-201</a>	Heather Elwood, 2012-05-17	Yes
290	5.196	<a href="#">Pennisetum setaceum</a>	<a href="#">wb1311-265</a>	Parker Chapple, 2012-05-17	Yes
291	5.196	<a href="#">Pennisetum setaceum</a>	<a href="#">wb1311-264</a>	Parker Chapple, 2012-05-17	Yes
292	5.177	<a href="#">Pennisetum setaceum</a>	<a href="#">wb1312-193</a>	Heather Elwood, 2012-05-16	Yes
293	5.177	<a href="#">Pennisetum setaceum</a>	<a href="#">wb1312-194</a>	Heather Elwood, 2012-05-16	Yes
294	5.177	<a href="#">Pennisetum setaceum</a>	<a href="#">wb1312-235</a>	Heather Elwood, 2012-05-10	Yes
295	5.177	<a href="#">Pennisetum setaceum</a>	<a href="#">wb1311-297</a>	Parker Chapple, 2012-06-04	Yes
296	5.177	<a href="#">Pennisetum setaceum</a>	<a href="#">wb1312-234</a>	Heather Elwood, 2012-05-10	Yes
297	5.146	<a href="#">Foeniculum vulgare</a>	<a href="#">wb1309-51</a>	Dillon Harker, 2012-05-31	Yes



SDNWR less abundant spp  
Prioritized Eradication Targets

Map ID	Total Score	Species	CalFlora ID	Observed	Herbicide?
298	5.144	<a href="#">Mesembryanthemum crystallinum</a>	<a href="#">wb1312-214</a>	Heather Elwood, 2012-05-18	Yes
299	5.144	<a href="#">Mesembryanthemum crystallinum</a>	<a href="#">wb1311-267</a>	Parker Chapple, 2012-05-17	Yes
300	5.144	<a href="#">Pennisetum setaceum</a>	<a href="#">wb1312-199</a>	Heather Elwood, 2012-05-17	Yes
301	5.144	<a href="#">Mesembryanthemum crystallinum</a>	<a href="#">wb1311-268</a>	Parker Chapple, 2012-05-17	Yes
302	5.144	<a href="#">Mesembryanthemum crystallinum</a>	<a href="#">wb1312-21</a>	Dillon Harker, 2012-05-18	Yes
303	5.144	<a href="#">Mesembryanthemum crystallinum</a>	<a href="#">wb1312-22</a>	Dillon Harker, 2012-05-18	Yes
304	5.144	<a href="#">Mesembryanthemum crystallinum</a>	<a href="#">wb1311-274</a>	Parker Chapple, 2012-05-18	Yes
305	5.136	<a href="#">Ailanthus altissima</a>	<a href="#">wb456-202</a>	Todd Keeler-Wolf, Jonathan Dunn, 2009-05-07	Yes
306	5.126	<a href="#">Vinca major</a>	<a href="#">wb1311-15</a>	Parker Chapple, 2012-05-18	Yes
307	5.105	<a href="#">Nicotiana glauca</a>	<a href="#">wb1311-270</a>	Parker Chapple, 2012-05-17	Yes
308	5.094	<a href="#">Foeniculum vulgare</a>	<a href="#">wb1309-48</a>	Dillon Harker, 2012-05-31	Yes
309	5.094	<a href="#">Foeniculum vulgare</a>	<a href="#">wb1310-53</a>	Heather Elwood, 2012-05-29	Yes
310	5.094	<a href="#">Foeniculum vulgare</a>	<a href="#">wb1309-53</a>	Dillon Harker, 2012-05-31	Yes
311	5.094	<a href="#">Foeniculum vulgare</a>	<a href="#">wb1310-42</a>	Heather Elwood, 2012-05-28	Yes
312	5.094	<a href="#">Foeniculum vulgare</a>	<a href="#">wb1309-58</a>	Dillon Harker, 2012-06-01	Yes
313	5.094	<a href="#">Foeniculum vulgare</a>	<a href="#">wb1308-116</a>	Parker Chapple, 2012-05-29	Yes
314	5.094	<a href="#">Foeniculum vulgare</a>	<a href="#">wb1309-49</a>	Dillon Harker, 2012-05-31	Yes
315	5.094	<a href="#">Foeniculum vulgare</a>	<a href="#">wb1309-54</a>	Dillon Harker, 2012-06-01	Yes
316	5.094	<a href="#">Foeniculum vulgare</a>	<a href="#">wb1310-51</a>	Heather Elwood, 2012-05-29	Yes
317	5.094	<a href="#">Foeniculum vulgare</a>	<a href="#">wb1309-50</a>	Dillon Harker, 2012-05-31	Yes
318	5.094	<a href="#">Foeniculum vulgare</a>	<a href="#">wb1310-43</a>	Heather Elwood, 2012-05-28	Yes
319	5.094	<a href="#">Foeniculum vulgare</a>	<a href="#">wb1310-52</a>	Heather Elwood, 2012-05-29	Yes
320	5.094	<a href="#">Foeniculum vulgare</a>	<a href="#">wb1310-47</a>	Heather Elwood, 2012-05-29	Yes
321	5.094	<a href="#">Foeniculum vulgare</a>	<a href="#">wb1310-54</a>	Heather Elwood, 2012-05-29	Yes
322	5.094	<a href="#">Foeniculum vulgare</a>	<a href="#">wb1309-92</a>	Dillon Harker, 2012-06-04	Yes
323	5.094	<a href="#">Foeniculum vulgare</a>	<a href="#">wb1309-91</a>	Dillon Harker, 2012-06-04	Yes
324	5.087	<a href="#">Foeniculum vulgare</a>	<a href="#">wb1307-18</a>	Heather Elwood, 2012-05-25	Yes
325	5.085	<a href="#">Nicotiana glauca</a>	<a href="#">wb1311-259</a>	Parker Chapple, 2012-05-16	Yes
326	5.085	<a href="#">Nicotiana glauca</a>	<a href="#">wb1311-261</a>	Parker Chapple, 2012-05-16	Yes
327	5.041	<a href="#">Foeniculum vulgare</a>	<a href="#">wb1308-95</a>	Parker Chapple, 2012-05-29	Yes
328	5.041	<a href="#">Foeniculum vulgare</a>	<a href="#">wb1310-48</a>	Heather Elwood, 2012-05-29	Yes
329	5.041	<a href="#">Foeniculum vulgare</a>	<a href="#">wb1309-34</a>	Dillon Harker, 2012-05-29	Yes
330	5.041	<a href="#">Foeniculum vulgare</a>	<a href="#">wb1310-46</a>	Heather Elwood, 2012-05-29	Yes



Map ID	Total Score	Species	CalFlora ID	Observed	Herbicide?
331	5.041	<a href="#">Foeniculum vulgare</a>	<a href="#">wb1309-42</a>	Dillon Harker, 2012-05-31	Yes
332	5.041	<a href="#">Foeniculum vulgare</a>	<a href="#">wb1309-57</a>	Dillon Harker, 2012-06-01	Yes
333	5.041	<a href="#">Foeniculum vulgare</a>	<a href="#">wb1309-56</a>	Dillon Harker, 2012-06-01	Yes
334	5.041	<a href="#">Foeniculum vulgare</a>	<a href="#">wb1308-93</a>	Parker Chapple, 2012-05-28	Yes
335	5.041	<a href="#">Foeniculum vulgare</a>	<a href="#">wb1310-50</a>	Heather Elwood, 2012-05-29	Yes
336	5.039	<a href="#">Pennisetum setaceum</a>	<a href="#">wb1312-9</a>	Dillon Harker, 2012-05-15	Yes
337	5.033	<a href="#">Nicotiana glauca</a>	<a href="#">wb1312-190</a>	Heather Elwood, 2012-05-16	Yes
338	5.033	<a href="#">Nicotiana glauca</a>	<a href="#">wb1312-191</a>	Heather Elwood, 2012-05-16	Yes
339	5.033	<a href="#">Nicotiana glauca</a>	<a href="#">wb1312-108</a>	Dillon Harker, 2012-06-06	Yes
340	5.033	<a href="#">Nicotiana glauca</a>	<a href="#">wb1312-196</a>	Heather Elwood, 2012-05-16	Yes
341	5.033	<a href="#">Nicotiana glauca</a>	<a href="#">wb1312-192</a>	Heather Elwood, 2012-05-16	Yes
342	5.033	<a href="#">Nicotiana glauca</a>	<a href="#">wb1312-197</a>	Heather Elwood, 2012-05-16	Yes
343	5.019	<a href="#">Chrysanthemum coronarium</a>	<a href="#">wb1307-351</a>	Parker Chapple, 2012-05-18	Yes
344	4.996	<a href="#">Foeniculum vulgare</a>	<a href="#">wb456-171</a>	Todd Keeler-Wolf, Jonathan Dunn, 2009-05-13	Yes
345	4.989	<a href="#">Foeniculum vulgare</a>	<a href="#">wb1309-65</a>	Dillon Harker, 2012-06-01	Yes
346	4.989	<a href="#">Foeniculum vulgare</a>	<a href="#">wb1309-36</a>	Dillon Harker, 2012-05-30	Yes
347	4.962	<a href="#">Chrysanthemum coronarium</a>	<a href="#">wb1308-332</a>	Dillon Harker, 2012-05-18	Yes
348	4.962	<a href="#">Chrysanthemum coronarium</a>	<a href="#">wb1308-328</a>	Dillon Harker, 2012-05-18	Yes
349	4.953	<a href="#">Vinca major</a>	<a href="#">wb1311-175</a>	Heather Elwood, 2012-05-18	Yes
350	4.933	<a href="#">Nicotiana glauca</a>	<a href="#">wb456-197</a>	Todd Keeler-Wolf, Jonathan Dunn, 2009-05-07	Yes
351	4.928	<a href="#">Nicotiana glauca</a>	<a href="#">wb1312-187</a>	Heather Elwood, 2012-05-11	Yes
352	4.928	<a href="#">Nicotiana glauca</a>	<a href="#">wb1312-186</a>	Heather Elwood, 2012-05-11	Yes
353	4.914	<a href="#">Chrysanthemum coronarium</a>	<a href="#">wb1309-15</a>	Dillon Harker, 2012-05-21	Yes
354	4.914	<a href="#">Chrysanthemum coronarium</a>	<a href="#">wb1307-352</a>	Parker Chapple, 2012-05-18	Yes
355	4.893	<a href="#">Foeniculum vulgare</a>	<a href="#">wb1309-27</a>	Dillon Harker, 2012-05-18	Yes
356	4.893	<a href="#">Foeniculum vulgare</a>	<a href="#">wb1310-29</a>	Heather Elwood, 2012-05-25	Yes
357	4.866	<a href="#">Vinca major</a>	<a href="#">wb459-22</a>	Giessow/Roth, 2009-01-01	Yes
358	4.841	<a href="#">Foeniculum vulgare</a>	<a href="#">wb1310-39</a>	Heather Elwood, 2012-05-25	Yes
359	4.841	<a href="#">Foeniculum vulgare</a>	<a href="#">wb1310-31</a>	Heather Elwood, 2012-05-25	Yes
360	4.805	<a href="#">Chrysanthemum coronarium</a>	<a href="#">wb1307-343</a>	Parker Chapple, 2012-05-17	Yes
361	4.799	<a href="#">Pennisetum setaceum</a>	<a href="#">wb1311-164</a>	Heather Elwood, 2012-05-17	Yes
362	4.788	<a href="#">Foeniculum vulgare</a>	<a href="#">wb1309-17</a>	Dillon Harker, 2012-05-22	Yes
363	4.788	<a href="#">Foeniculum vulgare</a>	<a href="#">wb1309-80</a>	Dillon Harker, 2012-06-04	Yes





Map ID	Total Score	Species	CalFlora ID	Observed	Herbicide?
364	4.788	<a href="#">Foeniculum vulgare</a>	<a href="#">wb1309-334</a>	Heather Elwood, 2012-05-22	Yes
365	4.788	<a href="#">Foeniculum vulgare</a>	<a href="#">wb1309-336</a>	Heather Elwood, 2012-05-23	Yes
366	4.788	<a href="#">Foeniculum vulgare</a>	<a href="#">wb1309-335</a>	Heather Elwood, 2012-05-22	Yes
367	4.788	<a href="#">Foeniculum vulgare</a>	<a href="#">wb1310-24</a>	Heather Elwood, 2012-05-24	Yes
368	4.788	<a href="#">Foeniculum vulgare</a>	<a href="#">wb1310-0</a>	Heather Elwood, 2012-05-24	Yes
369	4.788	<a href="#">Foeniculum vulgare</a>	<a href="#">wb1308-31</a>	Parker Chapple, 2012-05-25	Yes
370	4.788	<a href="#">Foeniculum vulgare</a>	<a href="#">wb1310-40</a>	Heather Elwood, 2012-05-25	Yes
371	4.788	<a href="#">Foeniculum vulgare</a>	<a href="#">wb1308-0</a>	Parker Chapple, 2012-05-21	Yes
372	4.788	<a href="#">Foeniculum vulgare</a>	<a href="#">wb1310-41</a>	Heather Elwood, 2012-05-25	Yes
373	4.788	<a href="#">Foeniculum vulgare</a>	<a href="#">wb1308-161</a>	Parker Chapple, 2012-06-05	Yes
374	4.771	<a href="#">Nicotiana glauca</a>	<a href="#">wb458-214</a>	Jeannie Gregory, Layla Aerne, 2009-09-15	Yes
375	4.760	<a href="#">Vinca major</a>	<a href="#">wb1311-16</a>	Parker Chapple, 2012-05-18	Yes
376	4.736	<a href="#">Foeniculum vulgare</a>	<a href="#">wb1310-23</a>	Heather Elwood, 2012-05-24	Yes
377	4.736	<a href="#">Foeniculum vulgare</a>	<a href="#">wb1310-21</a>	Heather Elwood, 2012-05-24	Yes
378	4.736	<a href="#">Foeniculum vulgare</a>	<a href="#">wb1310-22</a>	Heather Elwood, 2012-05-24	Yes
379	4.736	<a href="#">Foeniculum vulgare</a>	<a href="#">wb1309-16</a>	Dillon Harker, 2012-05-22	Yes
380	4.736	<a href="#">Foeniculum vulgare</a>	<a href="#">wb1308-17</a>	Parker Chapple, 2012-05-22	Yes
381	4.736	<a href="#">Foeniculum vulgare</a>	<a href="#">wb1309-323</a>	Heather Elwood, 2012-05-18	Yes
382	4.736	<a href="#">Foeniculum vulgare</a>	<a href="#">wb1309-333</a>	Heather Elwood, 2012-05-21	Yes
383	4.696	<a href="#">Foeniculum vulgare</a>	<a href="#">wb1307-25</a>	Heather Elwood, 2012-05-29	Yes
384	4.696	<a href="#">Foeniculum vulgare</a>	<a href="#">wb1309-52</a>	Dillon Harker, 2012-05-31	Yes
385	4.655	<a href="#">Pennisetum setaceum</a>	<a href="#">wb458-233</a>	Jeannie Gregory, Layla Aerne, 2008-03-20	Yes
386	4.655	<a href="#">Pennisetum setaceum</a>	<a href="#">wb458-234</a>	Jeannie Gregory, Layla Aerne, 2008-03-24	Yes
387	4.644	<a href="#">Pennisetum setaceum</a>	<a href="#">wb458-11</a>	Todd Keeler-Wolf, Jonathan Dunn, 2009-05-13	Yes
388	4.643	<a href="#">Foeniculum vulgare</a>	<a href="#">wb1307-24</a>	Heather Elwood, 2012-05-29	Yes
389	4.643	<a href="#">Foeniculum vulgare</a>	<a href="#">wb1307-22</a>	Heather Elwood, 2012-05-29	Yes
390	4.643	<a href="#">Foeniculum vulgare</a>	<a href="#">wb1309-66</a>	Dillon Harker, 2012-06-01	Yes
391	4.643	<a href="#">Foeniculum vulgare</a>	<a href="#">wb1307-19</a>	Heather Elwood, 2012-05-28	Yes
392	4.643	<a href="#">Foeniculum vulgare</a>	<a href="#">wb1307-21</a>	Heather Elwood, 2012-05-28	Yes
393	4.621	<a href="#">Chrysanthemum coronarium</a>	<a href="#">wb1307-16</a>	Heather Elwood, 2012-05-21	Yes
394	4.592	<a href="#">Pennisetum setaceum</a>	<a href="#">wb456-175</a>	Todd Keeler-Wolf, Jonathan Dunn, 2009-05-13	Yes
395	4.581	<a href="#">Cortaderia jubata</a>	<a href="#">wb1308-99</a>	Parker Chapple, 2012-05-29	Yes
396	4.561	<a href="#">Brassica tournefortii</a>	<a href="#">wb1299-40</a>	Parker Chapple, 2012-05-28	Yes



## SDNWR less abundant spp Prioritized Eradication Targets

Map ID	Total Score	Species	CalFlora ID	Observed	Herbicide?
397	4.561	<a href="#">Brassica tournefortii</a>	<a href="#">wb1299-42</a>	Parker Chapple, 2012-05-28	Yes
398	4.558	<a href="#">Pennisetum setaceum</a>	<a href="#">wb1312-39</a>	Dillon Harker, 2012-05-18	Yes
399	4.517	<a href="#">Chrysanthemum coronarium</a>	<a href="#">wb1307-118</a>	Dillon Harker, 2012-05-21	Yes
400	4.509	<a href="#">Brassica tournefortii</a>	<a href="#">wb1299-22</a>	Parker Chapple, 2012-05-24	Yes
401	4.509	<a href="#">Brassica tournefortii</a>	<a href="#">wb1299-23</a>	Parker Chapple, 2012-05-24	Yes
402	4.509	<a href="#">Brassica tournefortii</a>	<a href="#">wb1299-24</a>	Parker Chapple, 2012-05-24	Yes
403	4.505	<a href="#">Pennisetum setaceum</a>	<a href="#">wb1312-34</a>	Dillon Harker, 2012-05-21	Yes
404	4.505	<a href="#">Pennisetum setaceum</a>	<a href="#">wb1311-278</a>	Parker Chapple, 2012-05-21	Yes
405	4.505	<a href="#">Pennisetum setaceum</a>	<a href="#">wb1312-198</a>	Heather Elwood, 2012-05-16	Yes
406	4.505	<a href="#">Pennisetum setaceum</a>	<a href="#">wb1312-232</a>	Heather Elwood, 2012-06-05	Yes
407	4.500	<a href="#">Pennisetum setaceum</a>	<a href="#">wb1312-218</a>	Heather Elwood, 2012-05-18	Yes
408	4.500	<a href="#">Pennisetum setaceum</a>	<a href="#">wb1312-24</a>	Dillon Harker, 2012-05-18	Yes
409	4.500	<a href="#">Pennisetum setaceum</a>	<a href="#">wb1311-263</a>	Parker Chapple, 2012-05-17	Yes
410	4.500	<a href="#">Pennisetum setaceum</a>	<a href="#">wb1312-202</a>	Heather Elwood, 2012-05-17	Yes
411	4.500	<a href="#">Pennisetum setaceum</a>	<a href="#">wb1312-217</a>	Heather Elwood, 2012-05-18	Yes
412	4.500	<a href="#">Pennisetum setaceum</a>	<a href="#">wb1312-200</a>	Heather Elwood, 2012-05-17	Yes
413	4.448	<a href="#">Pennisetum setaceum</a>	<a href="#">wb1311-271</a>	Parker Chapple, 2012-05-17	Yes
414	4.413	<a href="#">Nicotiana glauca</a>	<a href="#">wb1312-100</a>	Dillon Harker, 2012-06-04	Yes
415	4.409	<a href="#">Nicotiana glauca</a>	<a href="#">wb1311-343</a>	Kimberly Edvarchuk, 2012-05-15	Yes
416	4.409	<a href="#">Nicotiana glauca</a>	<a href="#">wb1311-342</a>	Kimberly Edvarchuk, 2012-05-15	Yes
417	4.409	<a href="#">Nicotiana glauca</a>	<a href="#">wb1311-344</a>	Kimberly Edvarchuk, 2012-05-15	Yes
418	4.409	<a href="#">Nicotiana glauca</a>	<a href="#">wb1312-220</a>	Heather Elwood, 2012-05-18	Yes
419	4.409	<a href="#">Nicotiana glauca</a>	<a href="#">wb1312-215</a>	Heather Elwood, 2012-05-18	Yes
420	4.409	<a href="#">Nicotiana glauca</a>	<a href="#">wb1312-216</a>	Heather Elwood, 2012-05-18	Yes
421	4.398	<a href="#">Foeniculum vulgare</a>	<a href="#">wb1308-159</a>	Parker Chapple, 2012-05-31	Yes
422	4.398	<a href="#">Foeniculum vulgare</a>	<a href="#">wb1308-157</a>	Parker Chapple, 2012-05-30	Yes
423	4.398	<a href="#">Foeniculum vulgare</a>	<a href="#">wb1309-90</a>	Dillon Harker, 2012-06-04	Yes
424	4.398	<a href="#">Foeniculum vulgare</a>	<a href="#">wb1308-160</a>	Parker Chapple, 2012-05-31	Yes
425	4.398	<a href="#">Foeniculum vulgare</a>	<a href="#">wb1310-44</a>	Heather Elwood, 2012-05-29	Yes
426	4.398	<a href="#">Foeniculum vulgare</a>	<a href="#">wb1308-117</a>	Parker Chapple, 2012-05-29	Yes
427	4.398	<a href="#">Foeniculum vulgare</a>	<a href="#">wb1308-121</a>	Parker Chapple, 2012-05-29	Yes
428	4.395	<a href="#">Pennisetum setaceum</a>	<a href="#">wb1311-273</a>	Parker Chapple, 2012-05-17	Yes
429	4.395	<a href="#">Pennisetum setaceum</a>	<a href="#">wb1311-272</a>	Parker Chapple, 2012-05-17	Yes



SDNWR less abundant spp  
Prioritized Eradication Targets

Map ID	Total Score	Species	CalFlora ID	Observed	Herbicide?
430	4.395	<a href="#">Pennisetum setaceum</a>	<a href="#">wb1312-212</a>	Heather Elwood, 2012-05-17	Yes
431	4.379	<a href="#">Dittrichia graveolens</a>	<a href="#">wb1309-55</a>	Dillon Harker, 2012-06-01	Yes
432	4.376	<a href="#">Chrysanthemum coronarium</a>	<a href="#">wb1309-19</a>	Dillon Harker, 2012-05-23	Yes
433	4.361	<a href="#">Nicotiana glauca</a>	<a href="#">wb1312-38</a>	Dillon Harker, 2012-05-23	Yes
434	4.345	<a href="#">Foeniculum vulgare</a>	<a href="#">wb1309-35</a>	Dillon Harker, 2012-05-29	Yes
435	4.323	<a href="#">Chrysanthemum coronarium</a>	<a href="#">wb1309-18</a>	Dillon Harker, 2012-05-23	Yes
436	4.323	<a href="#">Chrysanthemum coronarium</a>	<a href="#">wb1309-332</a>	Heather Elwood, 2012-05-21	Yes
437	4.304	<a href="#">Nicotiana glauca</a>	<a href="#">wb1311-266</a>	Parker Chapple, 2012-05-17	Yes
438	4.271	<a href="#">Chrysanthemum coronarium</a>	<a href="#">wb1309-21</a>	Dillon Harker, 2012-05-23	Yes
439	4.271	<a href="#">Chrysanthemum coronarium</a>	<a href="#">wb1307-15</a>	Heather Elwood, 2012-05-21	Yes
440	4.218	<a href="#">Chrysanthemum coronarium</a>	<a href="#">wb1309-322</a>	Heather Elwood, 2012-05-18	Yes
441	4.218	<a href="#">Chrysanthemum coronarium</a>	<a href="#">wb1308-29</a>	Parker Chapple, 2012-05-23	Yes
442	4.218	<a href="#">Chrysanthemum coronarium</a>	<a href="#">wb1309-321</a>	Heather Elwood, 2012-05-18	Yes
443	4.114	<a href="#">Pennisetum setaceum</a>	<a href="#">wb1312-53</a>	Dillon Harker, 2012-05-29	Yes
444	4.114	<a href="#">Pennisetum setaceum</a>	<a href="#">wb1311-281</a>	Parker Chapple, 2012-05-24	Yes
445	4.107	<a href="#">Pennisetum setaceum</a>	<a href="#">wb1311-105</a>	Dillon Harker, 2012-05-23	Yes
446	4.062	<a href="#">Pennisetum setaceum</a>	<a href="#">wb1312-98</a>	Dillon Harker, 2012-06-01	Yes
447	3.914	<a href="#">Pennisetum setaceum</a>	<a href="#">wb1312-224</a>	Heather Elwood, 2012-05-23	Yes
448	3.914	<a href="#">Pennisetum setaceum</a>	<a href="#">wb1312-40</a>	Dillon Harker, 2012-05-18	Yes
449	3.862	<a href="#">Pennisetum setaceum</a>	<a href="#">wb1312-225</a>	Heather Elwood, 2012-05-25	Yes
450	3.862	<a href="#">Pennisetum setaceum</a>	<a href="#">wb1311-284</a>	Parker Chapple, 2012-05-25	Yes
451	3.862	<a href="#">Pennisetum setaceum</a>	<a href="#">wb1312-227</a>	Heather Elwood, 2012-05-25	Yes
452	3.822	<a href="#">Nicotiana glauca</a>	<a href="#">wb1312-36</a>	Dillon Harker, 2012-05-21	Yes
453	3.809	<a href="#">Pennisetum setaceum</a>	<a href="#">wb1311-285</a>	Parker Chapple, 2012-05-25	Yes
454	3.809	<a href="#">Pennisetum setaceum</a>	<a href="#">wb1311-283</a>	Parker Chapple, 2012-05-24	Yes
455	3.809	<a href="#">Pennisetum setaceum</a>	<a href="#">wb1312-35</a>	Dillon Harker, 2012-05-21	Yes
456	3.809	<a href="#">Pennisetum setaceum</a>	<a href="#">wb1311-298</a>	Parker Chapple, 2012-06-05	Yes
457	3.717	<a href="#">Nicotiana glauca</a>	<a href="#">wb1312-37</a>	Dillon Harker, 2012-05-22	Yes
458	3.471	<a href="#">Pennisetum setaceum</a>	<a href="#">wb1311-289</a>	Parker Chapple, 2012-05-31	Yes
459	3.471	<a href="#">Pennisetum setaceum</a>	<a href="#">wb1312-99</a>	Dillon Harker, 2012-06-01	Yes
460	3.418	<a href="#">Pennisetum setaceum</a>	<a href="#">wb1312-228</a>	Heather Elwood, 2012-05-28	Yes
461	3.418	<a href="#">Pennisetum setaceum</a>	<a href="#">wb1312-77</a>	Dillon Harker, 2012-05-29	Yes
462	3.418	<a href="#">Pennisetum setaceum</a>	<a href="#">wb1311-292</a>	Parker Chapple, 2012-06-01	Yes



Map ID	Total Score	Species	CalFlora ID	Observed	Herbicide?
463	3.418	<a href="#">Pennisetum setaceum</a>	<a href="#">wb1312-229</a>	Heather Elwood, 2012-05-28	Yes
464	3.418	<a href="#">Pennisetum setaceum</a>	<a href="#">wb1311-282</a>	Parker Chapple, 2012-05-24	Yes