

# Effectiveness of Aquatic Invasive Plant Control In Emerald Bay, Lake Tahoe

Zach Hymanson – CA Tahoe Conservancy

Kim Boyd – Tahoe RCD

Tamara Sasaki – CA State Parks



# Eurasian watermilfoil (*Myriophyllum spicatum*)



1995 – First Discovered in Emerald Bay

2000 – Few Plants

2003 – Approximately 1 Acre

2008 – Over 3 Acres

# Emerald Bay milfoil infestation



2011/07/19

Photo :Doug Freeland A.C.E



Floating fragments  
colonize  
unoccupied  
substrate

# Challenges to working in Emerald Bay



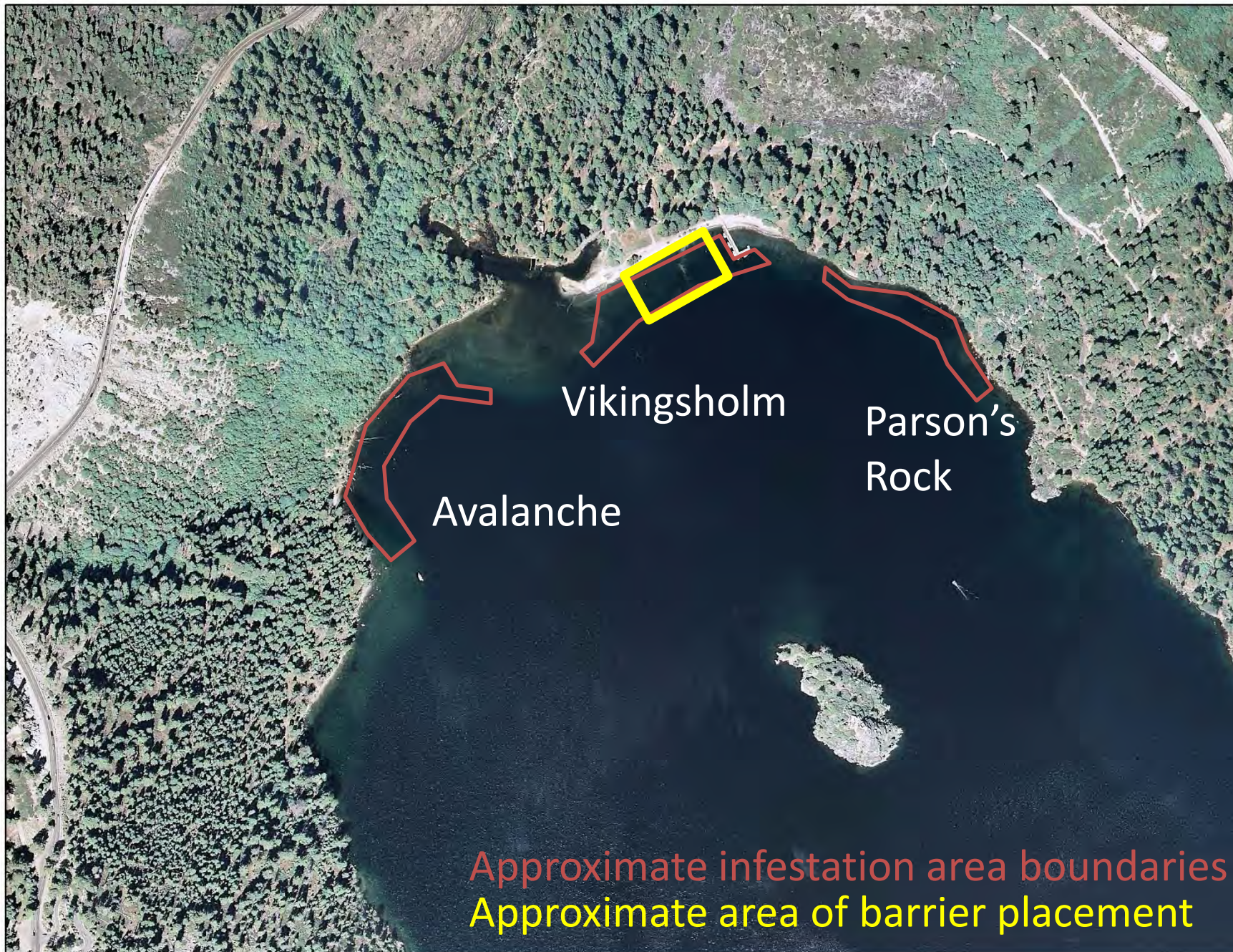
# Recreation



Project Area

# Natural Hazards





Vikingsholm

Parson's  
Rock

Avalanche

Approximate infestation area boundaries  
Approximate area of barrier placement



# Vikingsholm Castle



Treatment Area



Underwater transects to measure treatment effectiveness







# Swimming Barriers into place

Photo: Jim Brockett



Laying out 10X40  
Barriers for  
Installation



We-no-nah



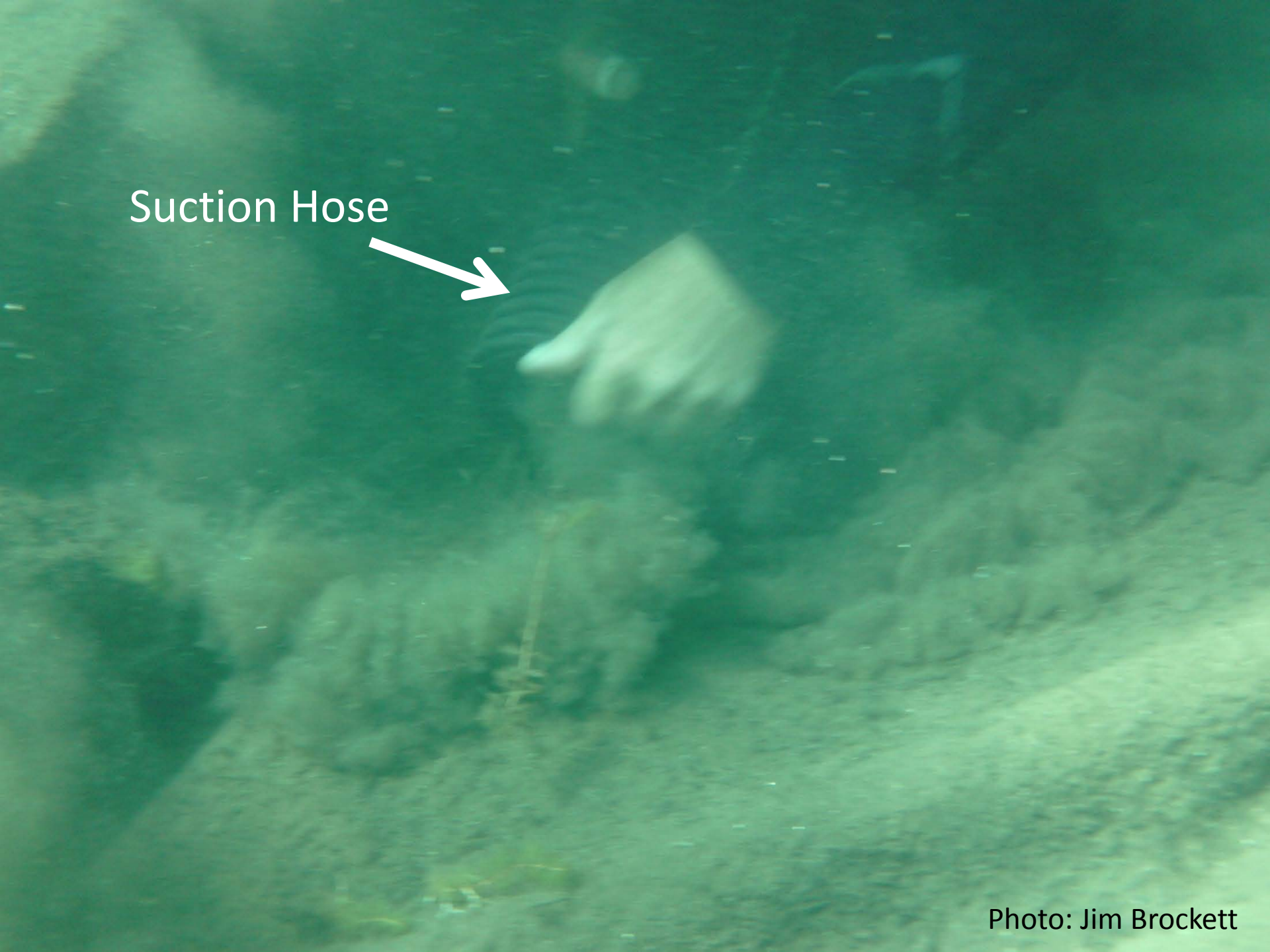


Barriers don't work in hard to reach places, but suction removal does



Photo: Jim Brockett

Suction Hose





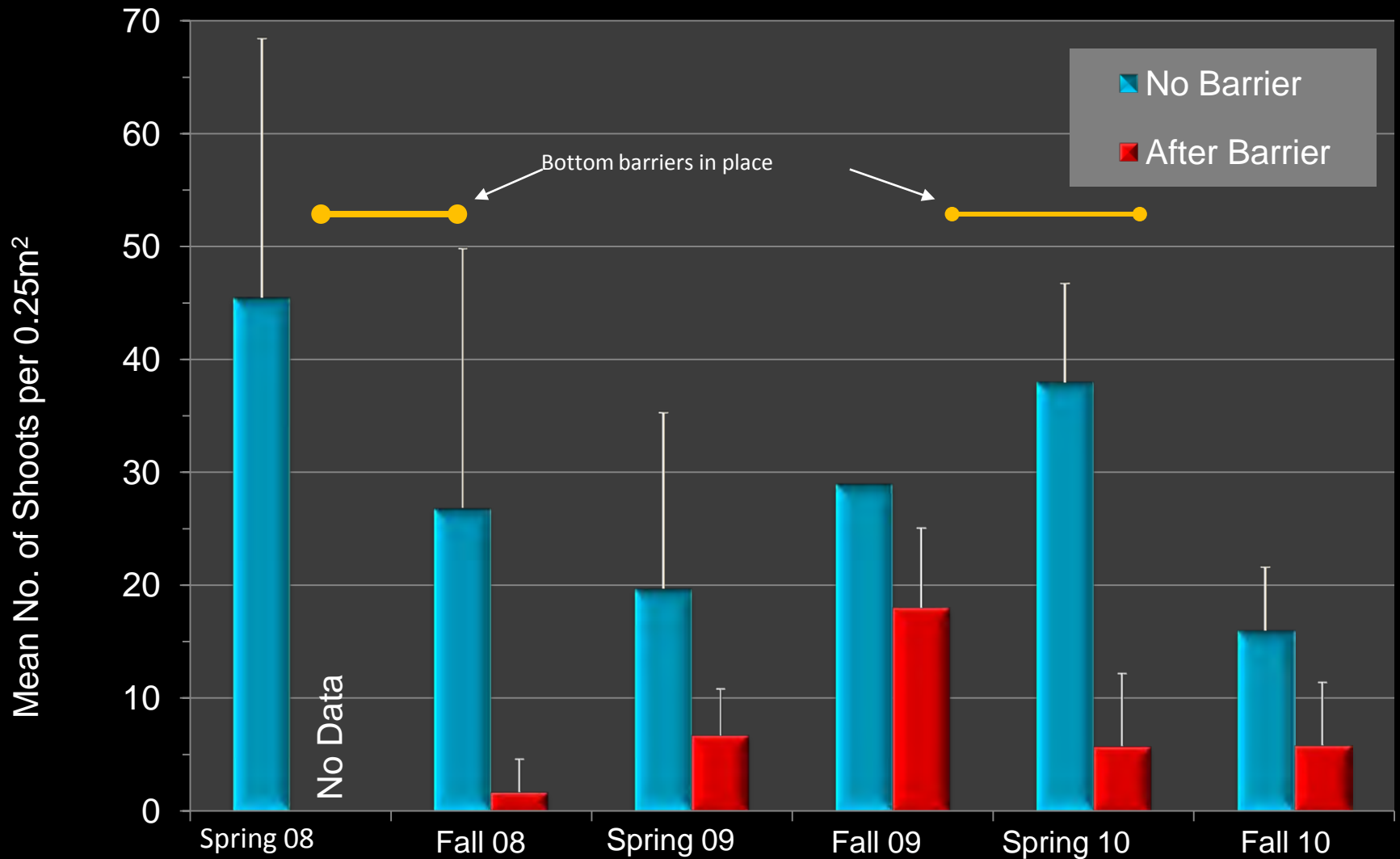


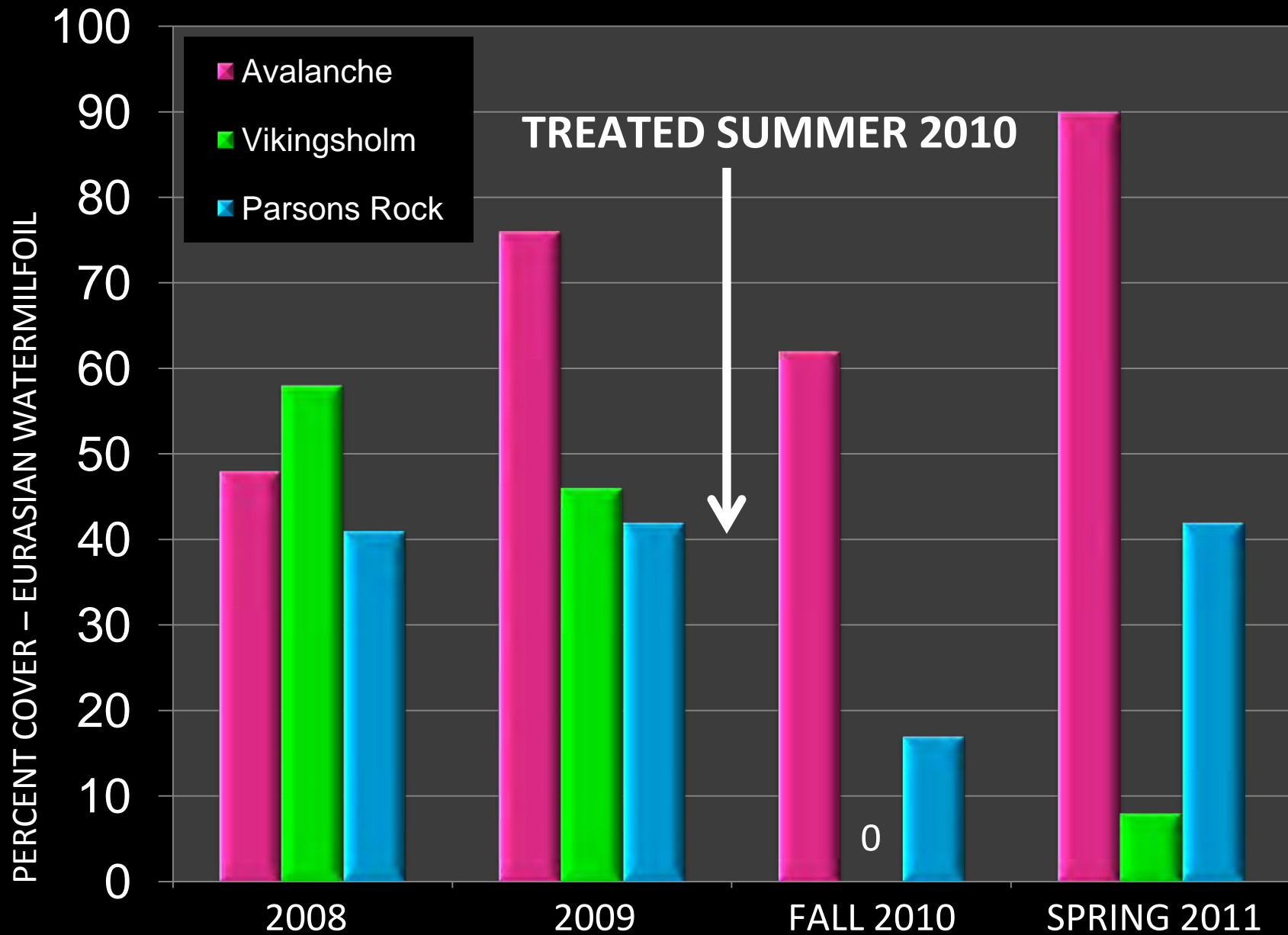
Milfoil

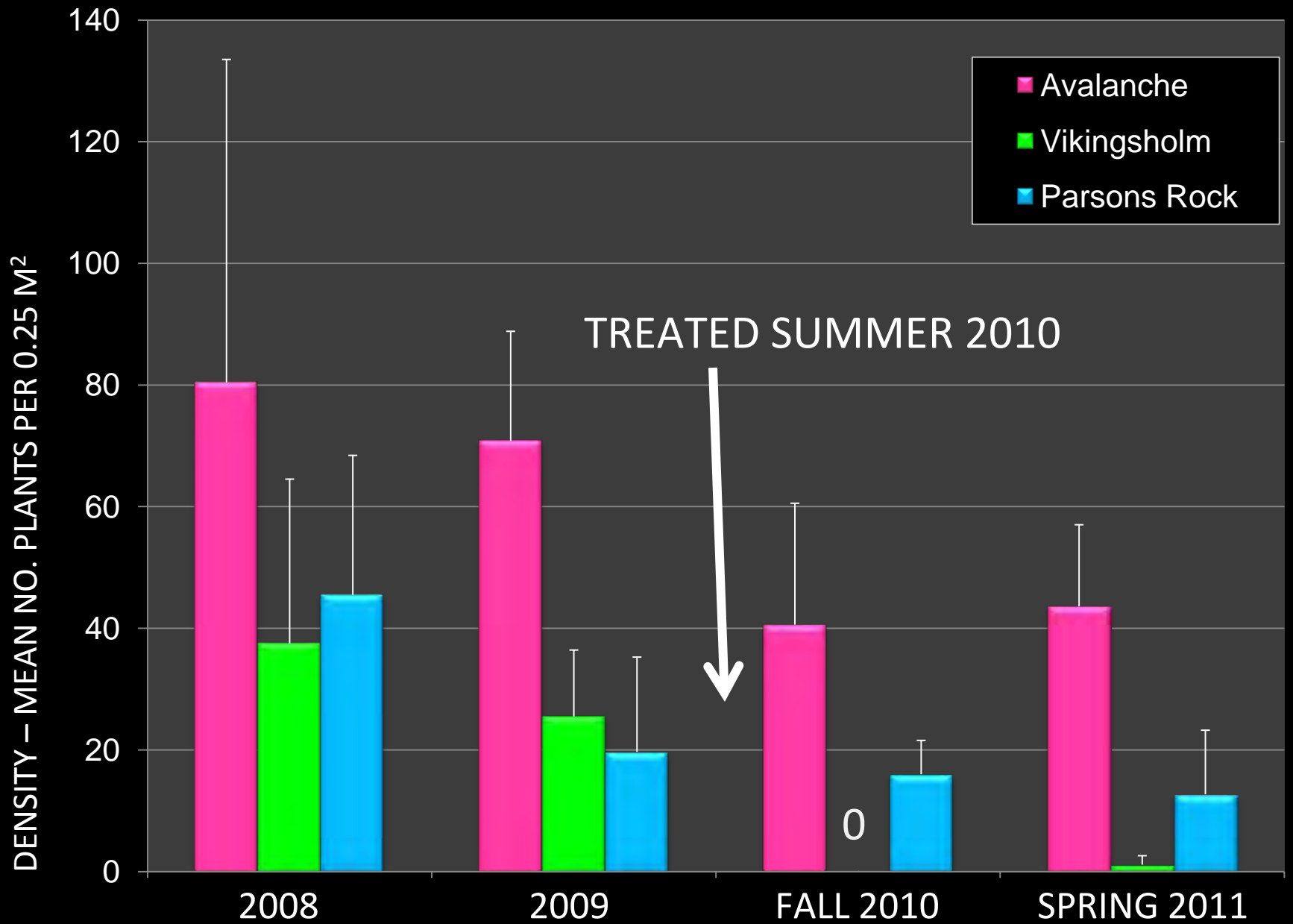
Sandy Bottom  
After Barrier Removal



# EWM Densities at Parsons Rock Site

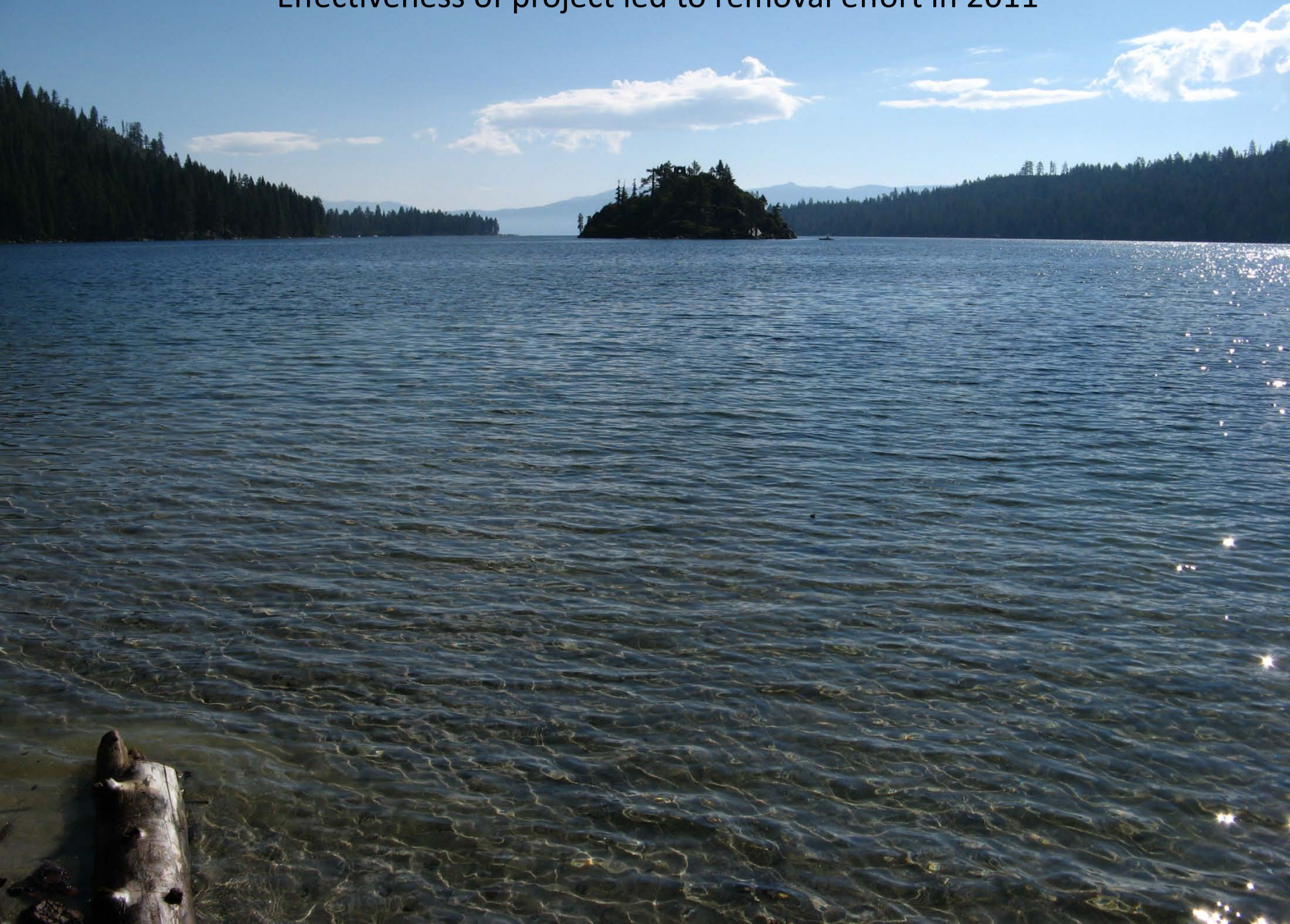








Effectiveness of project led to removal effort in 2011



Questions?

