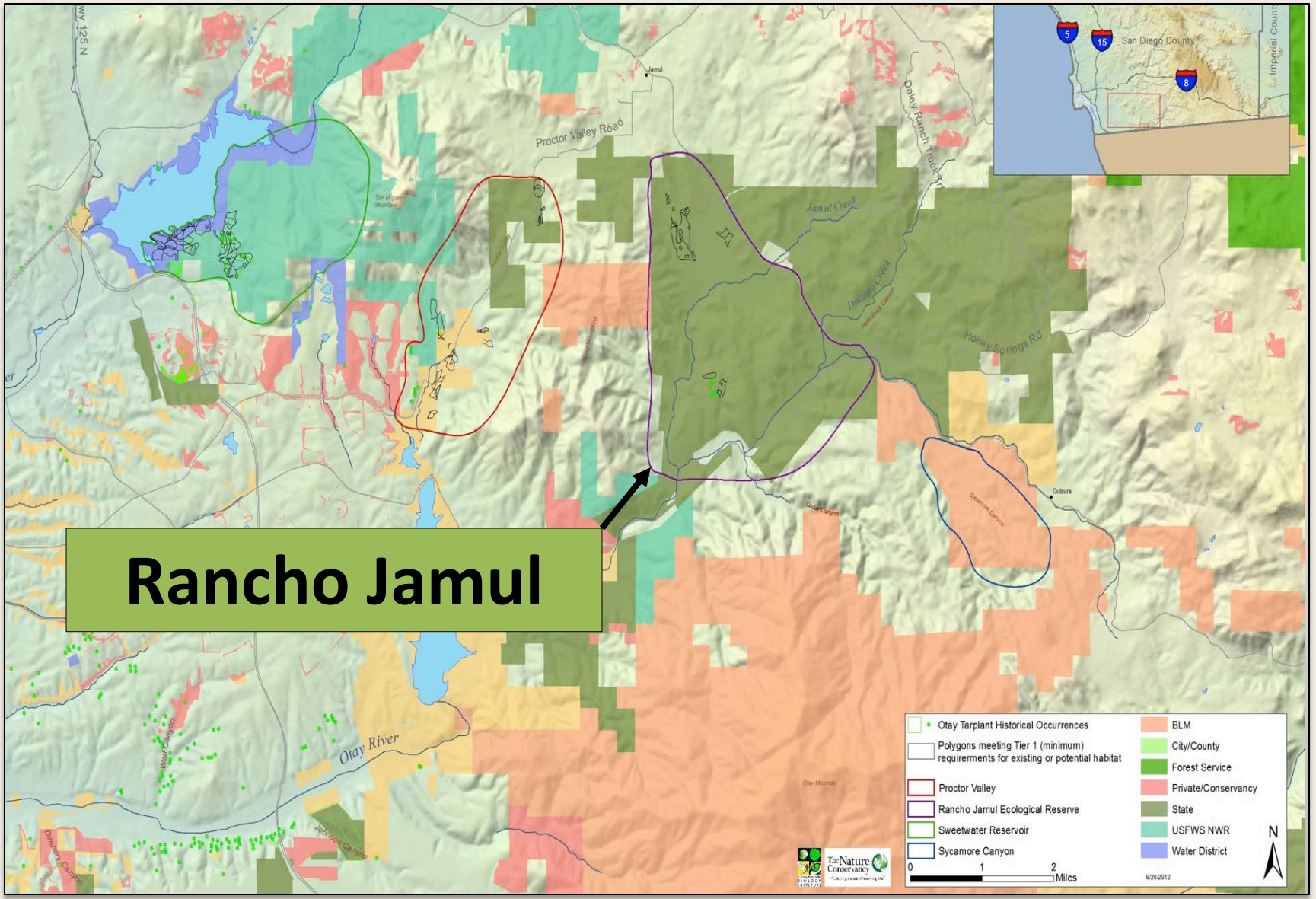


# Rancho Jamul Ecological Reserve

## – SUCCESS STORY





# Rancho Jamul

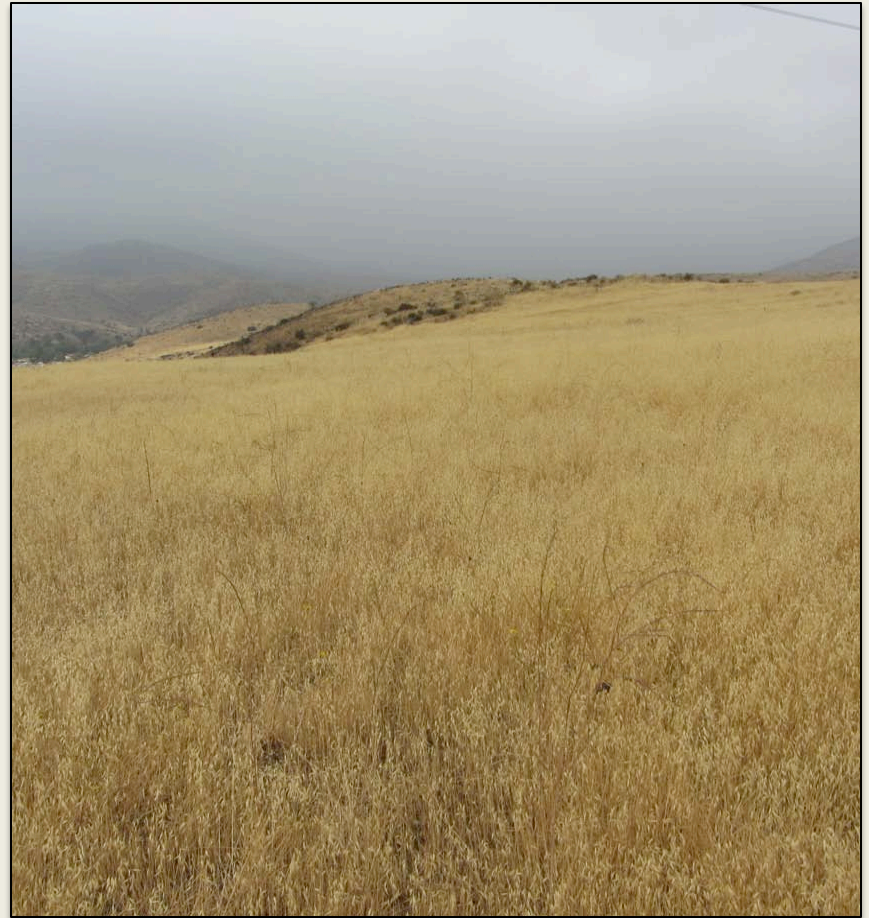
Olay Tarplant Historical Occurrences	BLM
Polygons meeting Tier 1 (minimum) requirements for existing or potential habitat	City/County
Proctor Valley	Forest Service
Rancho Jamul Ecological Reserve	Private/Conservancy
Sweetwater Reservoir	State
Sycamore Canyon	USFWS NWR
	Water District



6/20/2012

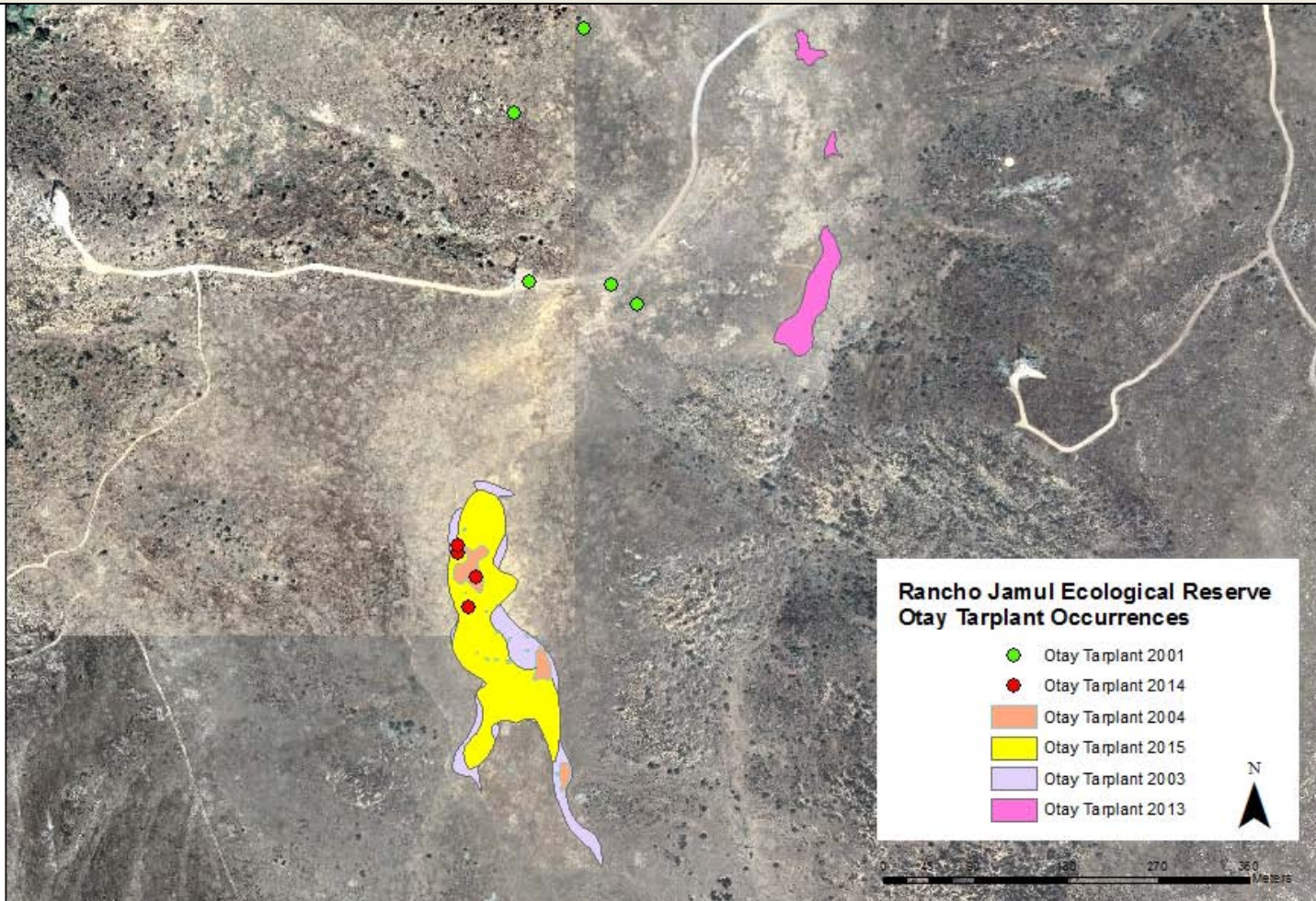


# Target Species and Habitat



# Rancho Jamul

## Otay Tarplant Distribution



# Target Habitats: Grasslands and Forblands

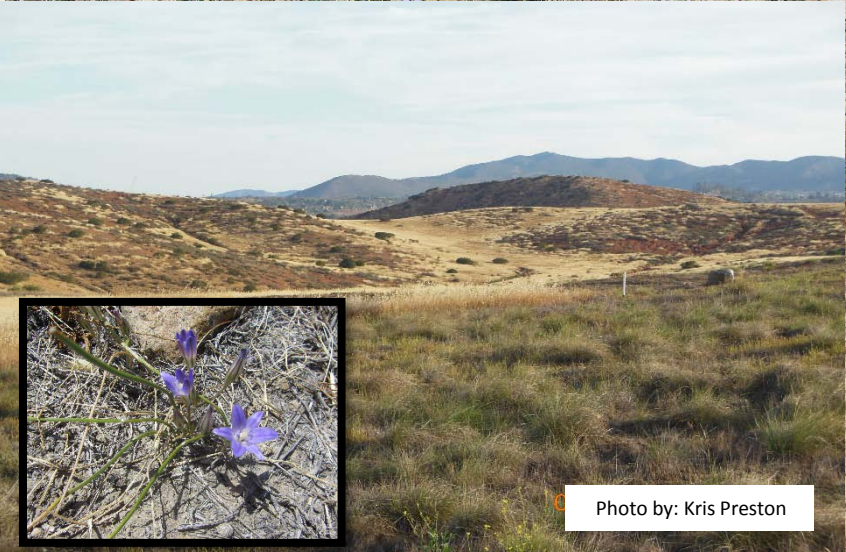


Photo by: Kris Preston



# Threat: Nonnative Grasses and Forbs

**Goal:** stimulate OTP seedbank response.

**Treatments:** prescribed burn, line trim, mow, and herbicide (3 years).

**Monitoring design:** 5 blocked experimental plots in burned portion.



Pre-Burn



Post-Burn





# Treatments



Photo by: John Ekhoﬀ



Photo by: John Ekhoﬀ



Photo by: John Ekhoﬀ



# Control



# Mow



# Line Trim



# Herbicide



# Treatments

Control

Mow

Herbicide





**Before**



**After**



# Otay Tarplant Results (2013 – 2015)

2013: 0

2014: 11

2015: 1,000s

Herbicide plots: 67%

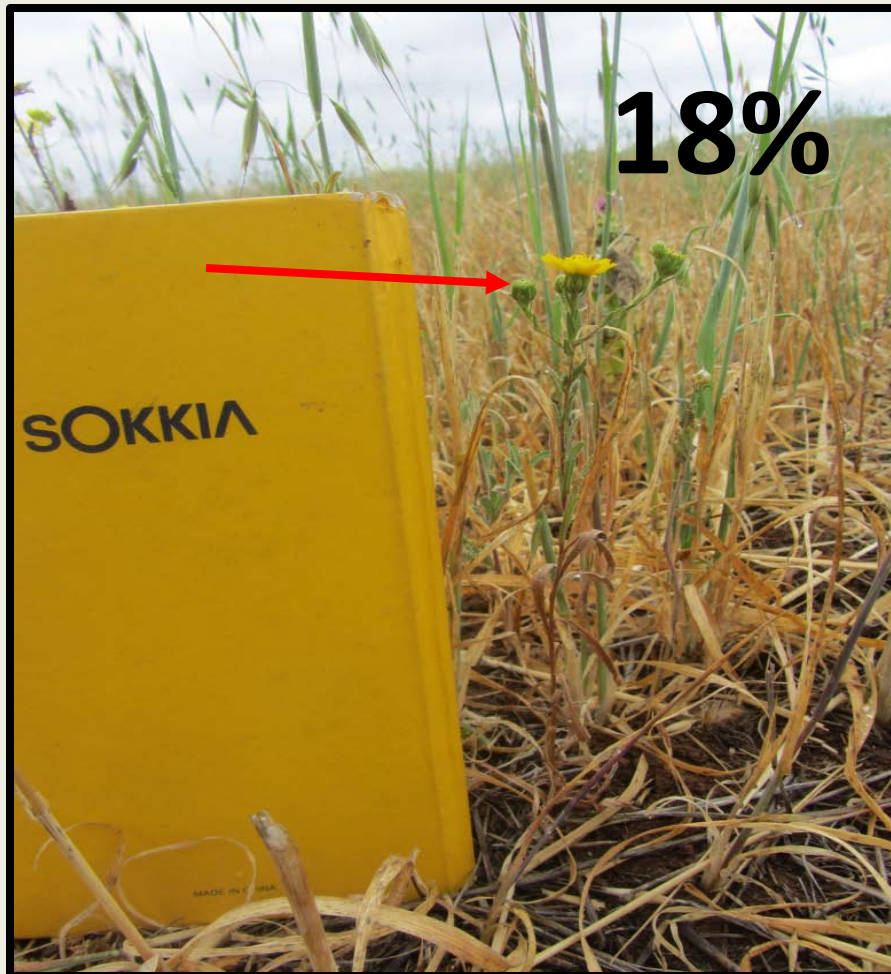
Mow plots: 14%

Line trim plots: 18%

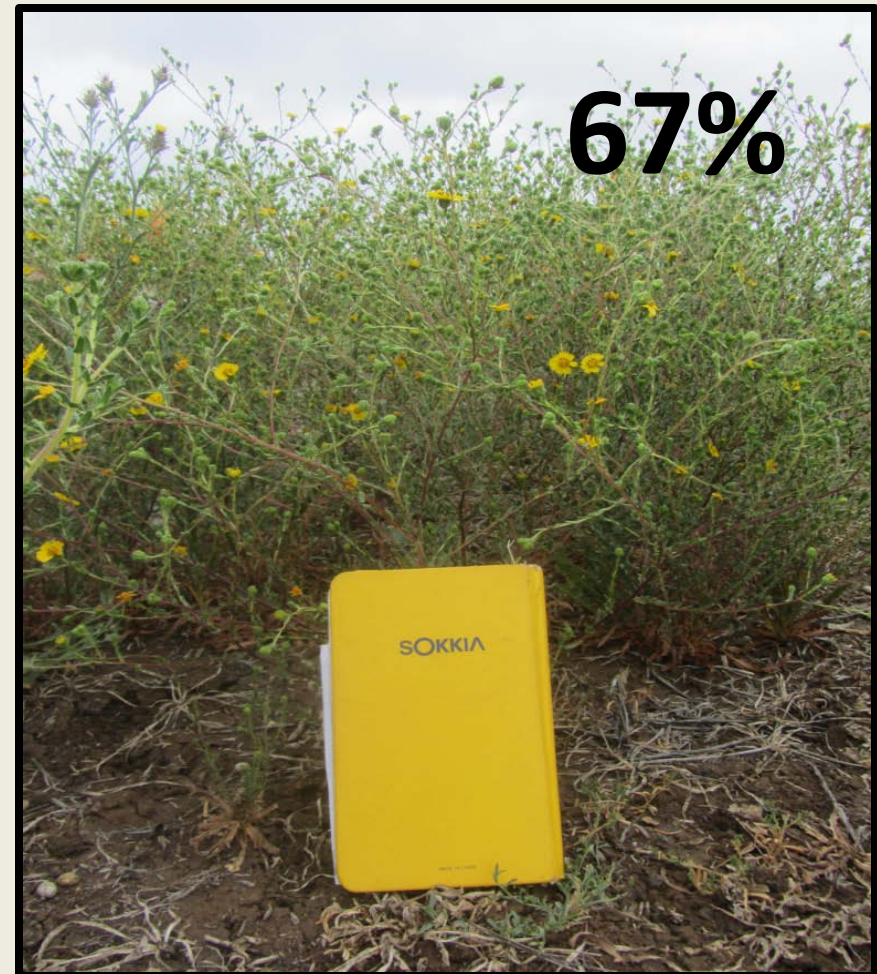
Control plots: <1%



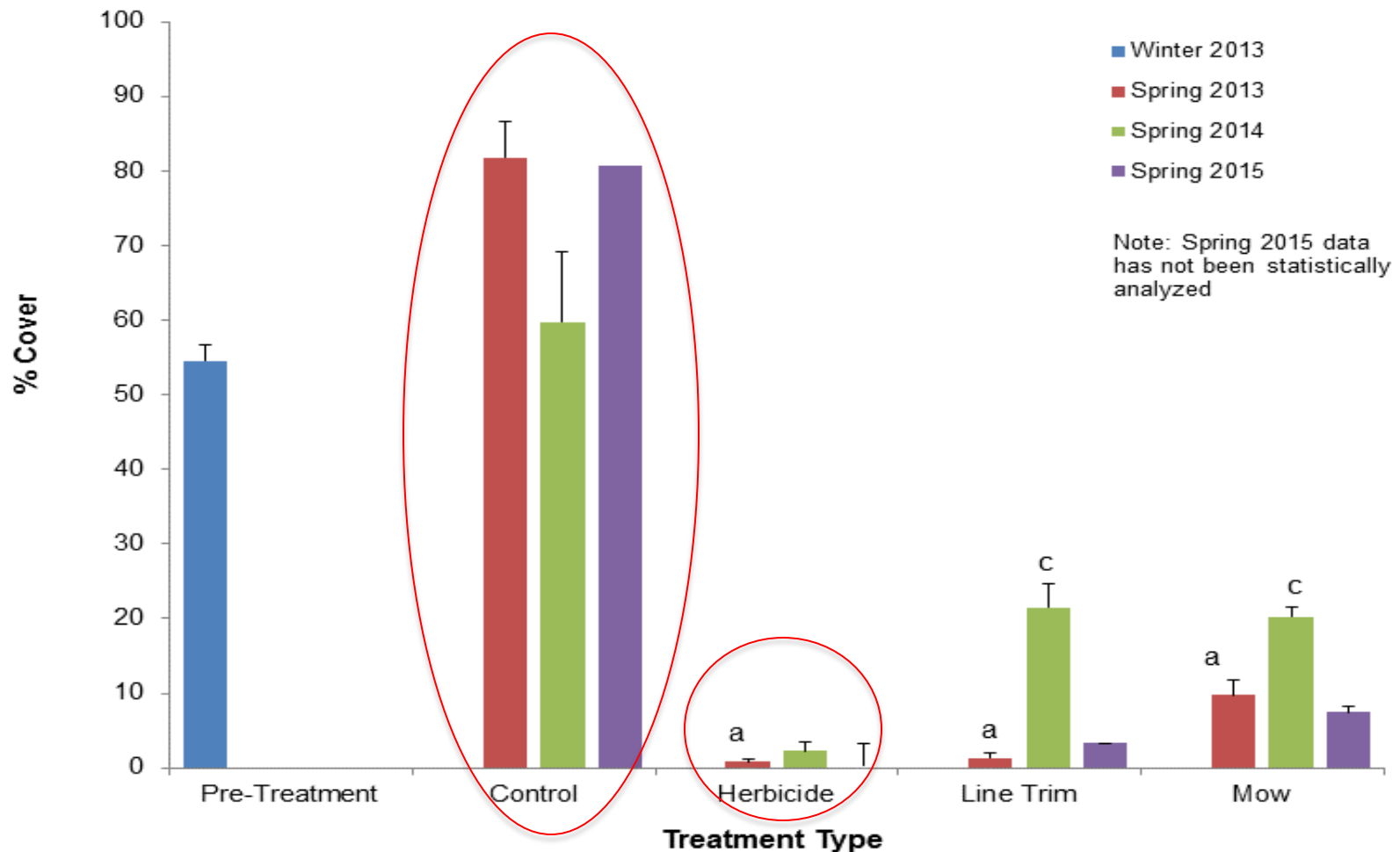
# Line Trim Plot



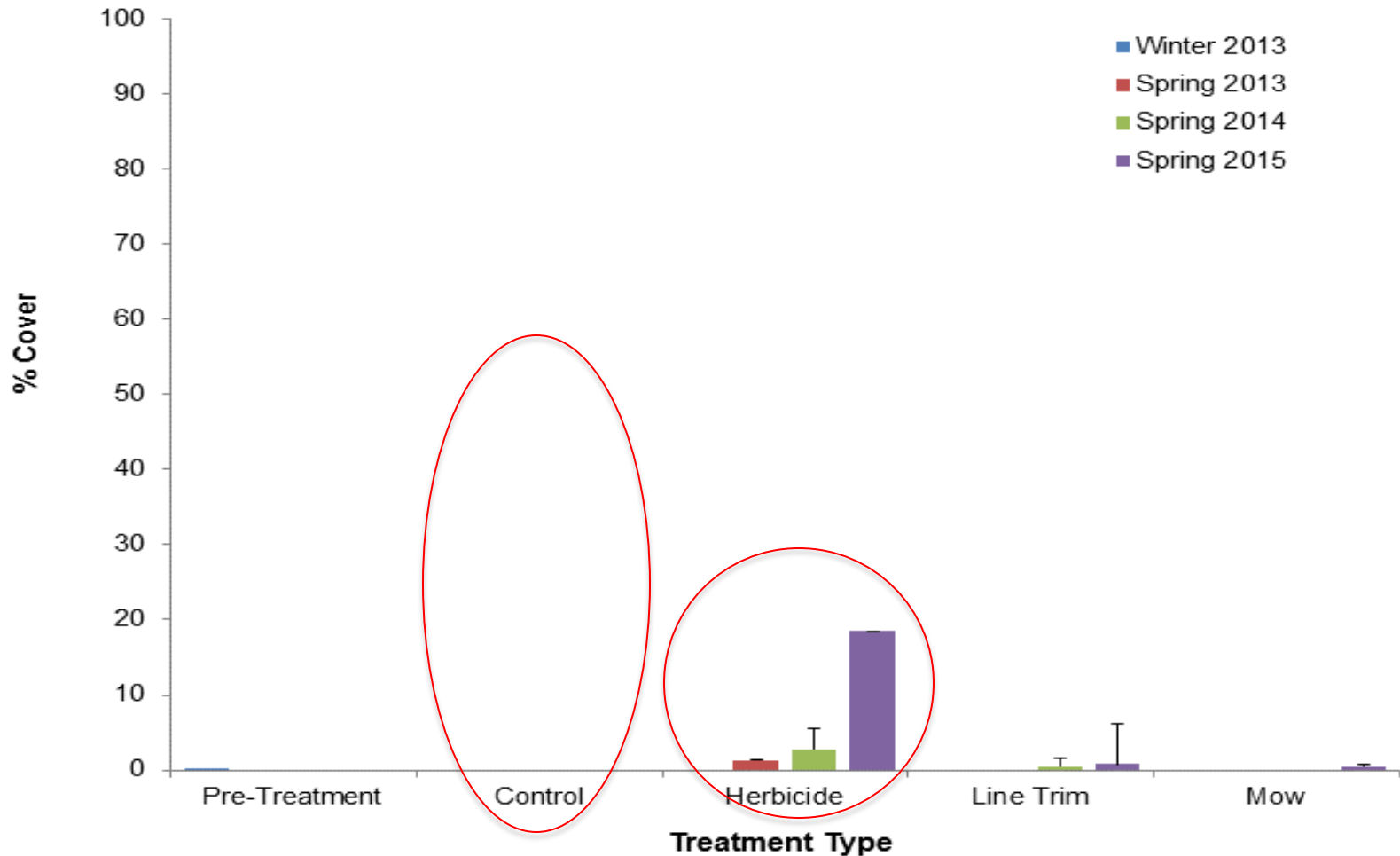
# Herbicide Plot



# Pre- and Post-treatment % Wild Oat Cover (2013 - 2015)



# Pre- and Post-treatment % Native Forb Cover (2013 - 2015)





# Labor – How long does it take? What is the cost?

Method	# Hours Treat 1 Ac	Cost (Labor Only) Treat 1 Acre
Herbicide (Gator + Back Pack)	7.16	\$86 - \$308
Herbicide (Back Pack Only)	12	\$144 - \$516
<b>Mow</b>	<b>2.9</b>	<b>\$35 - \$125</b>
Line Trim	7.5 (2 people)	\$180 - \$645



# In Conclusion.....

- Take advantage of “clean slate” produced by fire for restoration purposes.
- Mowing is quickest and cheapest.
- Herbicide is most effective for OTP seed bank response and provides recruitment sites for natives.
- >1-2 years to obtain results.

But, perpetual management is necessary.



# Project Partners

