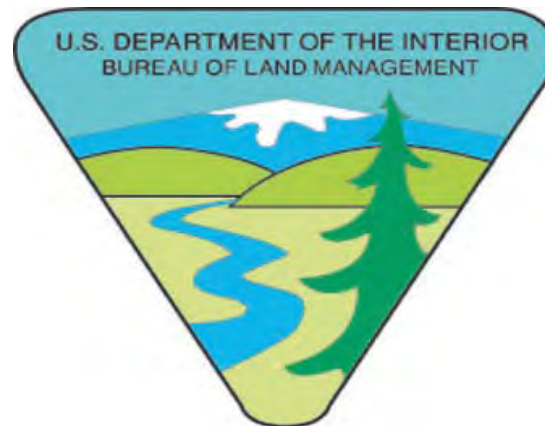


**CONTROLLING INVASIVE
SPECIES ON FORT ORD
NATIONAL MONUMENT:
FINDING WEEDS WHILE AVOIDING BOMBS**

SUSAN HUBBARD

BUREAU OF LAND MANAGEMENT





Source: Esri, DigitalGlobe, GeoEye, Earthstar Geographics, CNES/Airbus DS, USDA, USGS, AeroX, ©Swapping, AeroGRID, IGN, IGP, swisstopo, and the ©IS User Community. Sources: Esri, SEBCO, NOAA, National Geographic, DeLorme, HERE, Geonames.org, and other contributors



B23 BCT
PLATOON 4
FORT ORD CALIF
II MAR 1969

FEDERAL AND/OR STATE LISTED SPECIES

Sand gilia

Monterey spineflower

Yadon's piperia

Contra Costa goldfields

Seaside birdsbeak

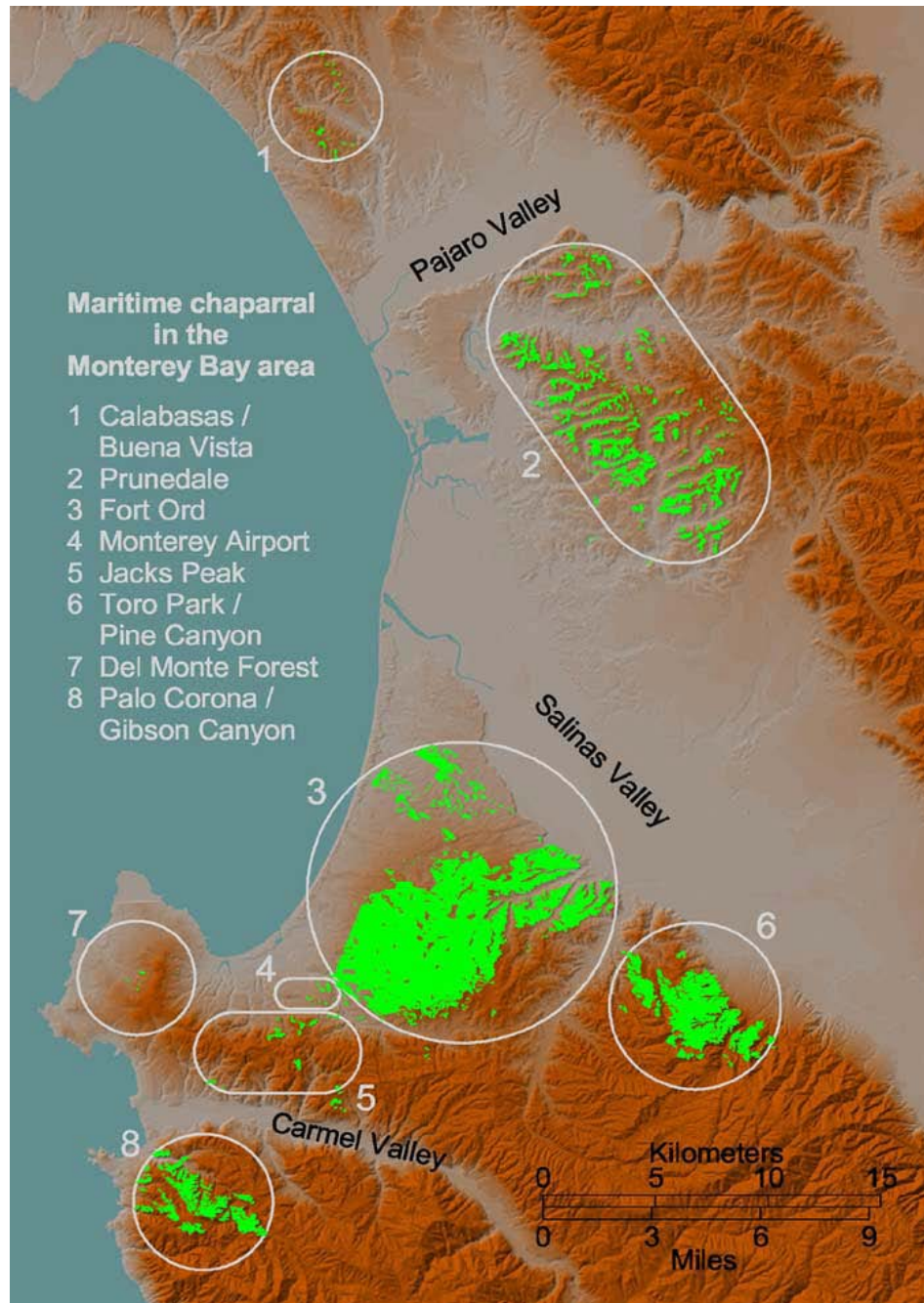


California red-legged frog

California tiger salamander

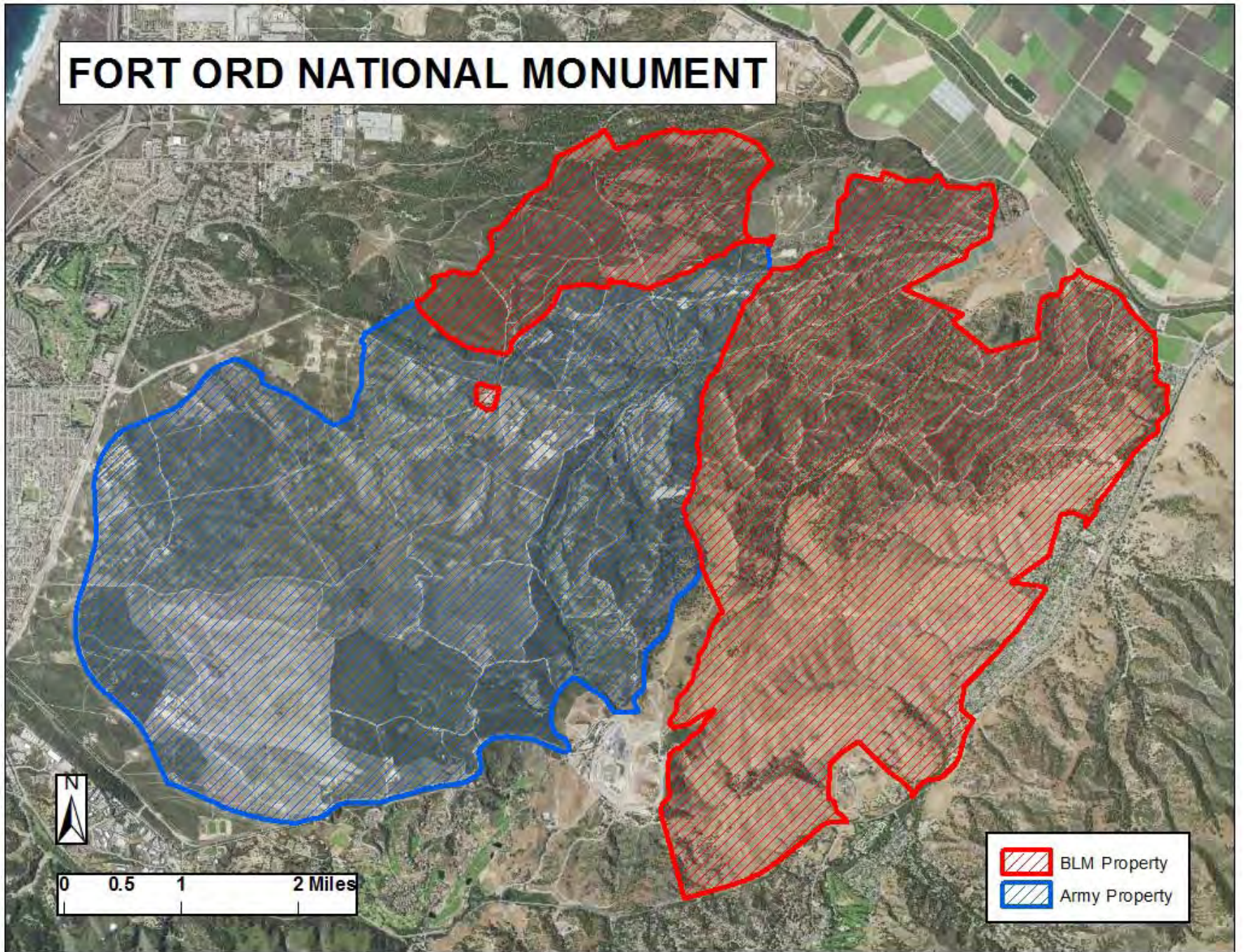






Map from the
Elkhorn
Slough
Foundation

FORT ORD NATIONAL MONUMENT



-  BLM Property
-  Army Property

0 0.5 1 2 Miles



DANGER

PELIGRO

EXPLOSIVES AREA

KEEP OUT BY ORDER OF THE COMMANDER

AREA DE EXPLOSIVOS

MANTENGASE AFUERA POR ORDEN
DEL COMANDANTE

NOTICE

TRESPASSERS WILL BE PROSECUTED
INTRUSOS SERAN PROCESADOS

Under Title 18, USC, Section 1382

NO
TRESPASSING
VIOLATORS
WILL BE
PROSECUTED











Carpobrotus edulis



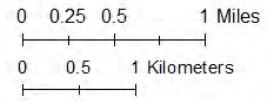
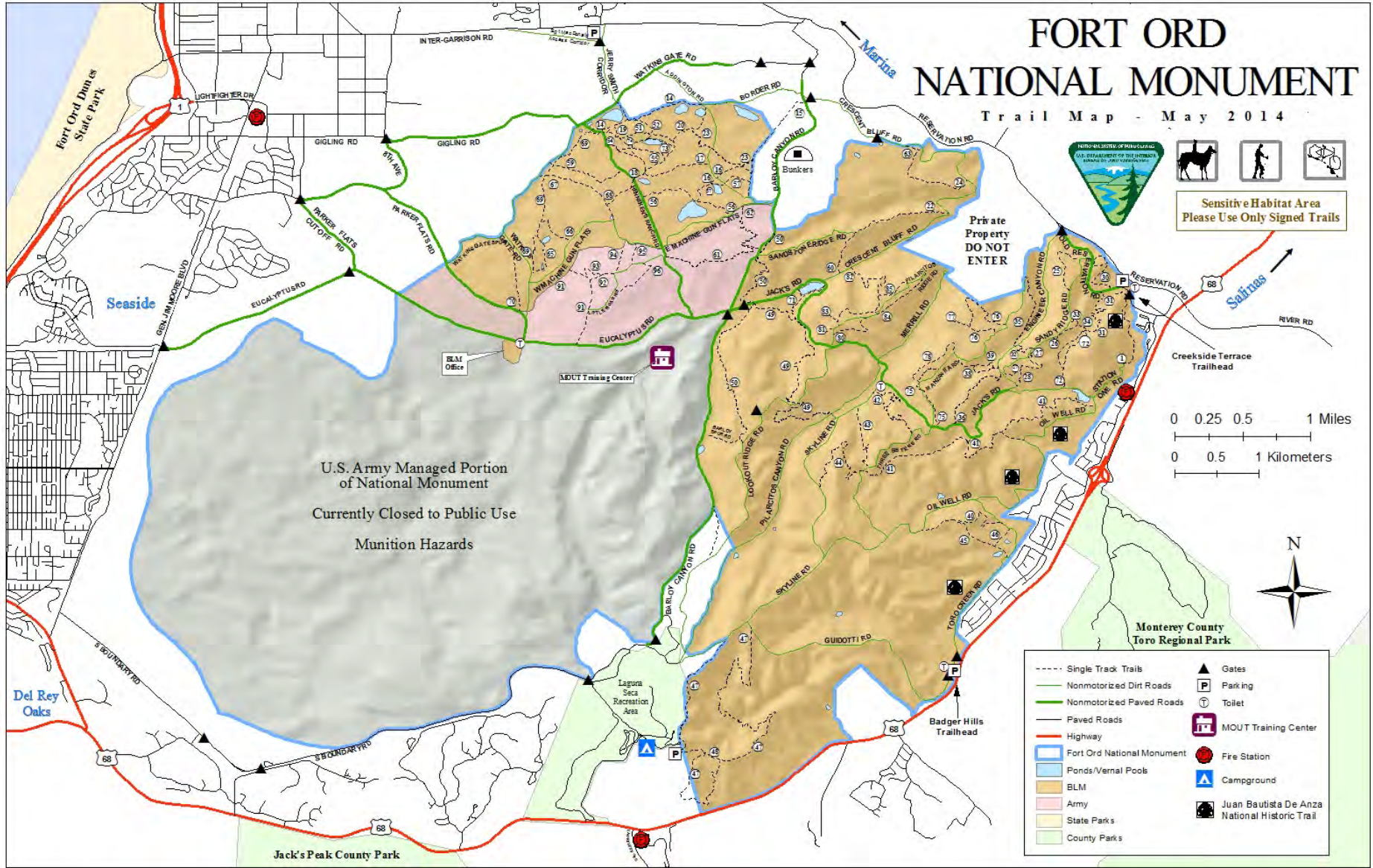
Cortaderia jubata

FORT ORD NATIONAL MONUMENT

Trail Map - May 2014



Sensitive Habitat Area
Please Use Only Signed Trails



- Single Track Trails
- Nonmotorized Dirt Roads
- Nonmotorized Paved Roads
- Paved Roads
- Highway
- Fort Ord National Monument
- Ponds/Vernal Pools
- BLM
- Army
- State Parks
- County Parks
- ▲ Gates
- P Parking
- T Toilet
- MOUT Training Center
- Fire Station
- ▲ Campground
- Juan Bautista De Anza National Historic Trail

U.S. Army Managed Portion
of National Monument
Currently Closed to Public Use
Muniton Hazards

Private Property
DO NOT
ENTER

Monterey County
Toro Regional Park

Jack's Peak County Park







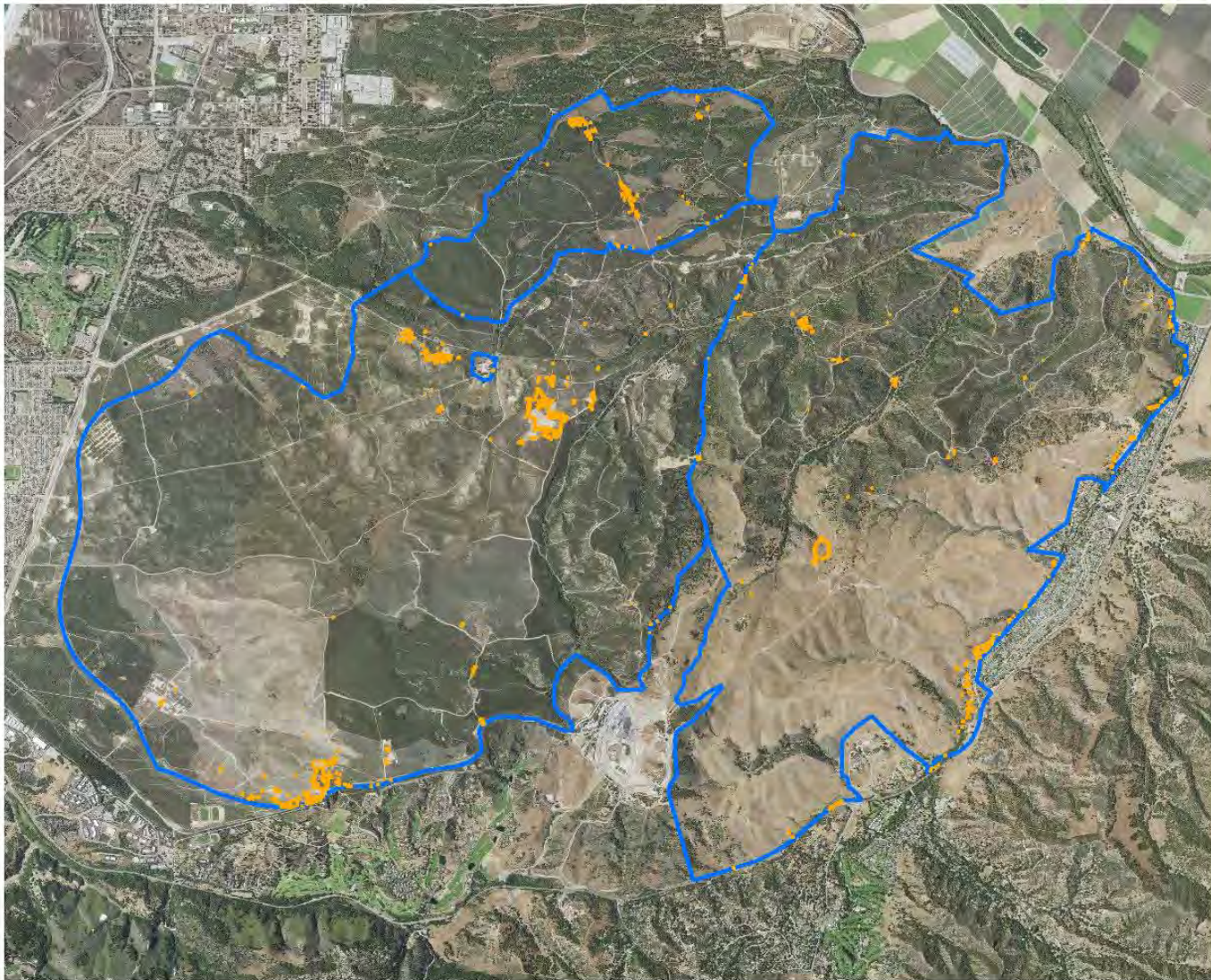
Species worked on BLM lands in 2014

33 species

Arundo	Fuller's teasel	Poison hemlock
Australian tea tree	Harding grass	Rock rose
Bermuda buttercup	Himalayan blackberry	Russian thistle
Black mustard	Hoary cress	Spotted knapweed
Blessed thistle	Horehound	Stinkwort
Calla lily	Jubata	Tall fescue
Eucalyptus	Iceplant	3-cornered onion
Everlasting pea	Klamath weed	Veldt grass
Fennel	Kikuyu grass	Velvet grass
French broom	Mexican feather grass	Wand mullein
Giant buckwheat	Panic veldt grass	Yellow starthistle



Ehrharta calycina



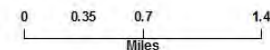
U.S. DEPARTMENT OF THE INTERIOR
BUREAU OF LAND MANAGEMENT



**Total Distribution
Genista monspessulana
(French Broom)
Fort Ord, California
1998 - 2013**




N



Datum: GCS_North_American_1983
Projection: NAD83_UTM_Zone_10N
Map Updated: March 5, 2014



**Total Distribution
Centaurea solstitialis
(Yellow starthistle)
Fort Ord, California
1998 - 2014**

 Yellow starthistle



00.005.01 0.02
Miles

Datum: D_North American_1983
Projection: NAD83_UTM_Zone_10N
Map Updated: 3/17/15



