



# Building Partnerships:

*Tribes and Invasive Plant Management for Habitat Restoration*

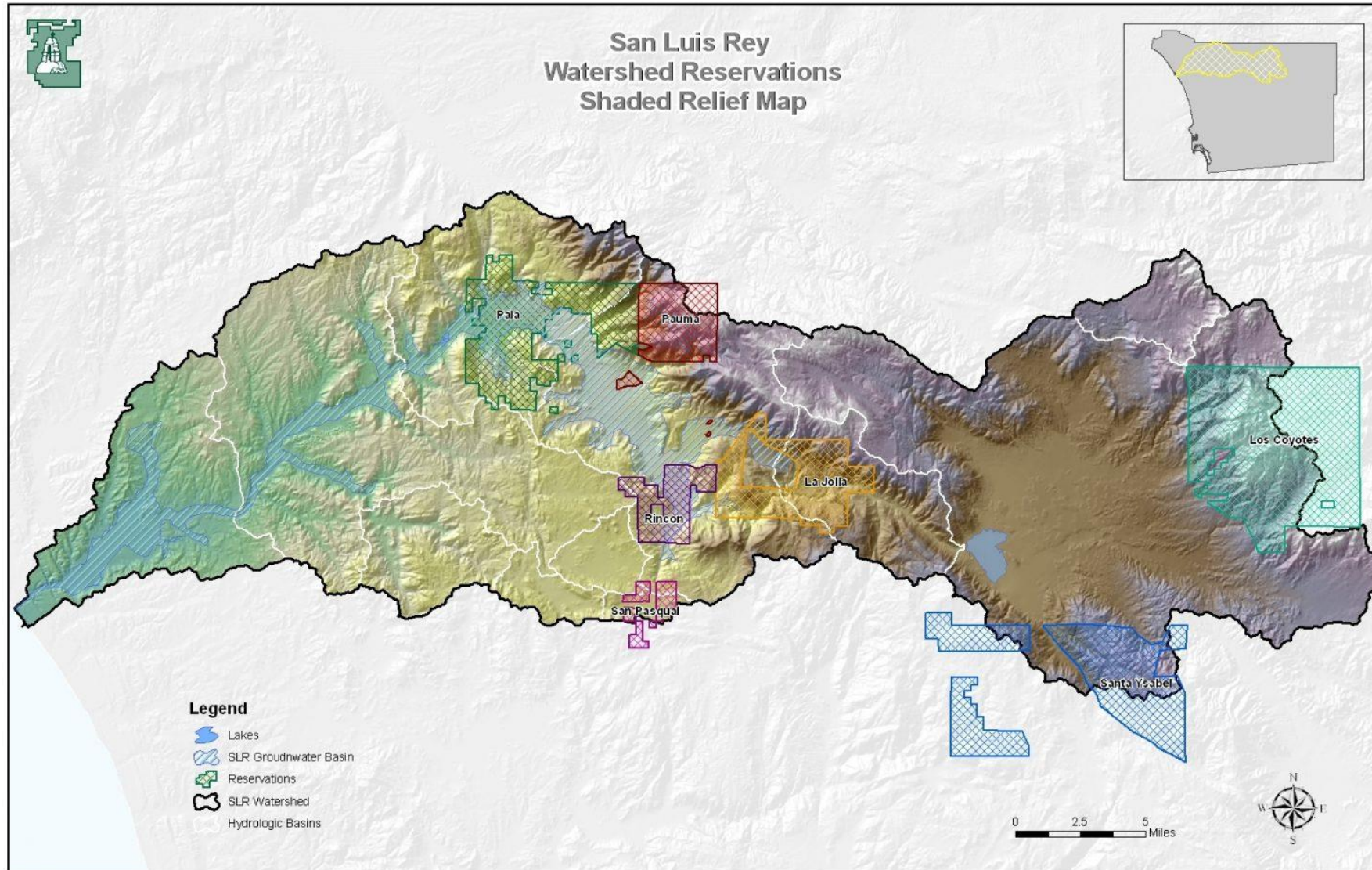
Kurt Broz

Natural Resources Specialist

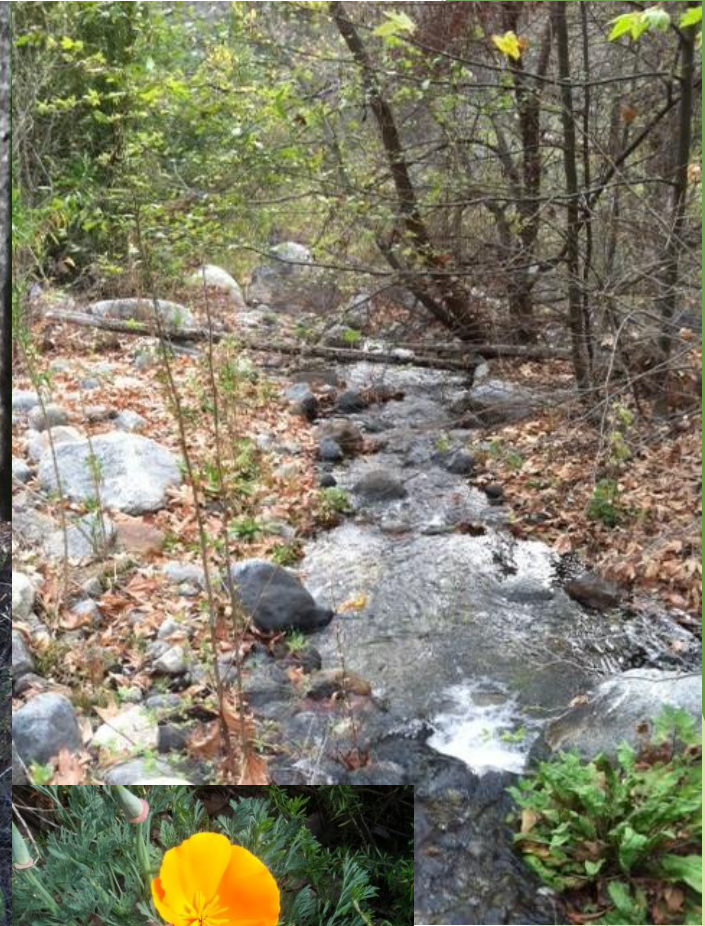
Pala Band of Mission Indians



# SAN LUIS REY RIVER



# SAN LUIS REY RIVER



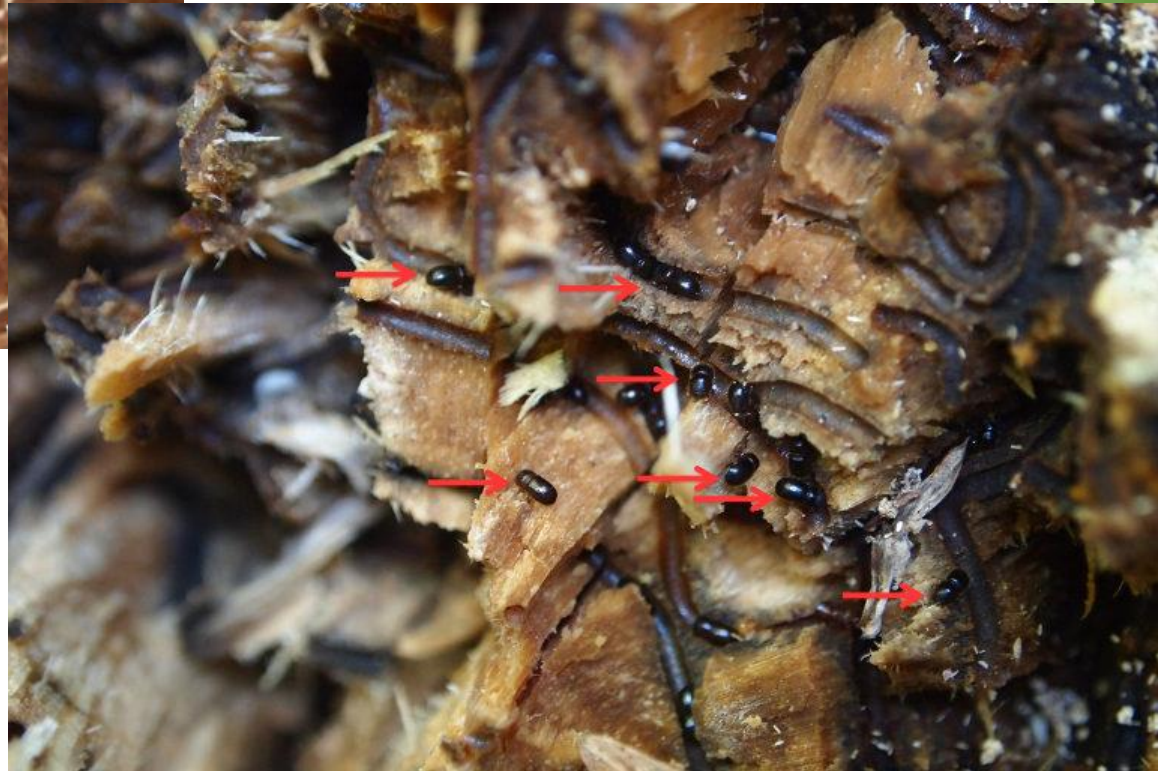
# SAN LUIS REY RIVER



Gold-spotted Oak Borer



POLYPHAGOUS SHOT HOLE BORER



# The Needs

- ▶ Baseline surveys
- ▶ Maps, maps, maps!
- ▶ Habitat Conservation Plan?
- ▶ Forest Management Plan?
- ▶ Climate Adaptation Plan?
- ▶ Community involvement!
- ▶ Partnerships, partnerships, partnerships!
- ▶ PARTNERSHIPS!

# The Partnerships!

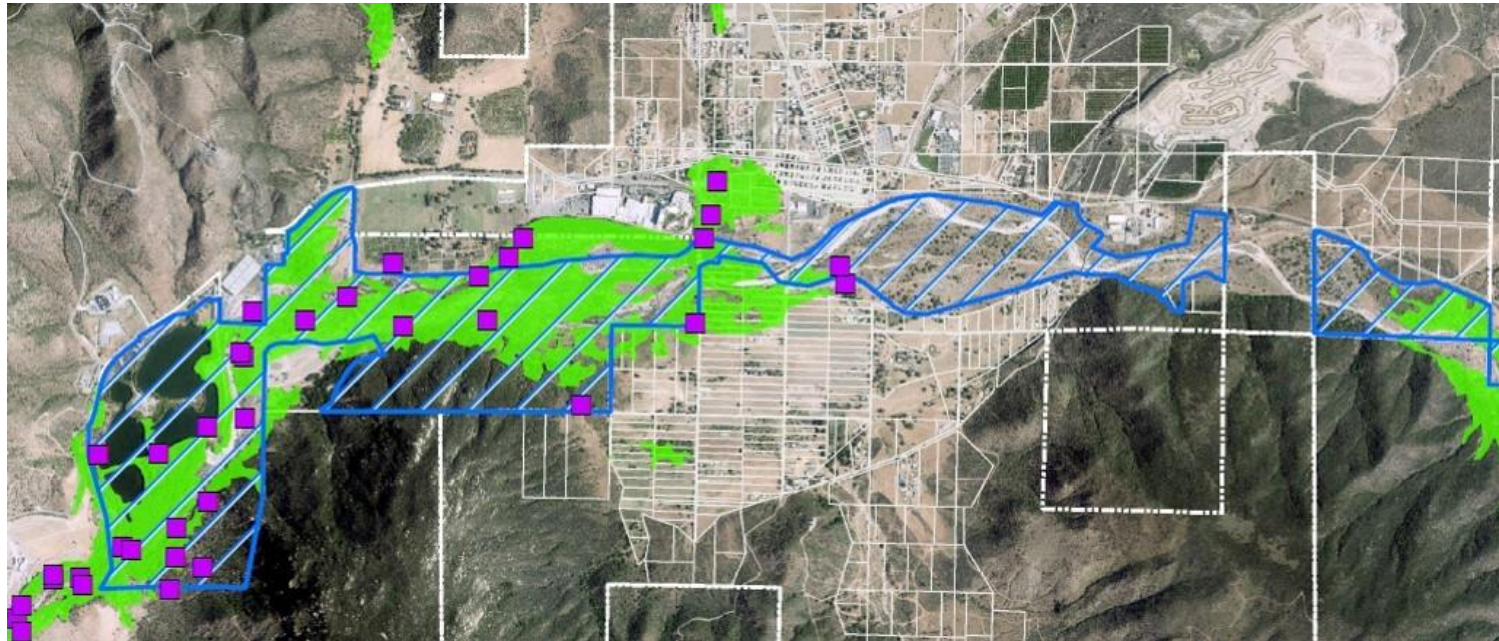
- ▶ USFWS - HCP, outreach, education, workshops
- ▶ NRCS - restoration funds
- ▶ BIA - restoration funds
- ▶ CNPS - education, ID assistance, Rare Plant Treasure Hunt
- ▶ APHIS - MOU for wild pigs
- ▶ CA LCC
- ▶ Climate Science Alliance - Climate Kids Tribes
- ▶ UC CE - ID assistance, Riparian Workshop
- ▶ Urban Corps SD - weed removal crew
- ▶ Cal Fish and Wildlife
- ▶ SD Zoo - education
- ▶ Other Tribes

# THE PALA ENVIRONMENTAL DEPARTMENT

- ▶ **Integrated Natural Resources Management Plan (INRMP)**
  - ▶ Forest Management Plan
  - ▶ Habitat Conservation Plan (HCP)
  - ▶ Wetland Management Plan
  - ▶ Cultural Resources Management Plan
    - ▶ Climate Adaptation Plan
- ▶ **Strategic Work Plan / TEP (Tribal Environmental Plan)**

# HABITAT CONSERVATION PLAN (HCP)

- ▶ USFWS Tribal Wildlife Grants (TWG)
- ▶ In the final stretch!



Least Bell's Vireo Habitat and Sightings

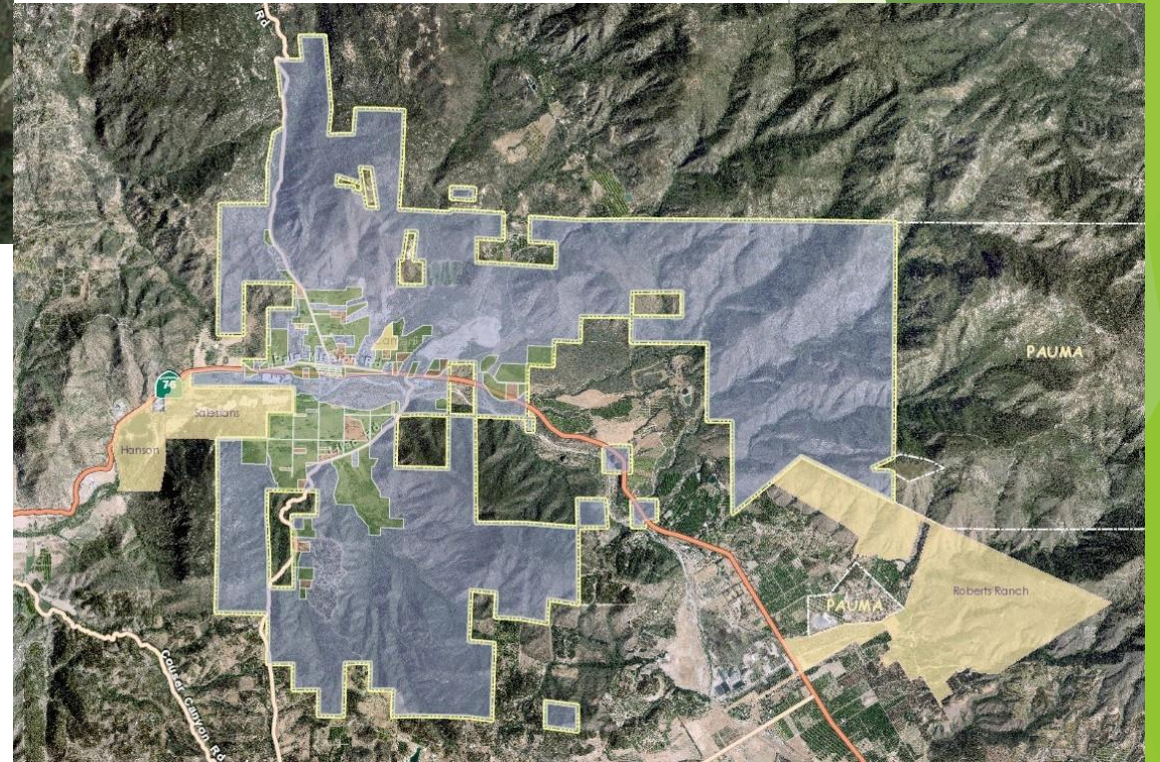


# HABITAT CONSERVATION PLAN (HCP)



Habitat types...

Where are we?



# STRATEGIC WORK PLAN / TEP

Year	Objectives / Intermediate Program Development Milestones (includes pursuing needed assistance and resources)	CI #s	Role (Tribe/EPA)	Area	Category	Repeat (Yes/No)	Source of Objective	Work Plan Component	Status	Outputs / Deliverables	Intermediate Outcome(s)
2016	Annually review and update the ETEP Climate Change Component, obtaining input from relevant departments, leaders, and other stakeholders	A.1, A.3, B.5.1	Tribe & EPA	Climate	Planning	Yes				Updated Perpetual 4-Year ETEP Component	
2016	Conduct a climate change vulnerability and risk assessments and prepare a report	C.3.14	Tribe	Climate	Studying		FY15-16 CAA 10	Adaptation Planning; Trair		Climate change vulnerability / risk assessment report	
2016	Obtain staff training to build skills and capacities relating to the climate change program area objectives (see combined annual training plan)	B.2.2, B.2.3, C	Tribe	Climate	Training					New staff skills; Training details	
2016	Develop climate change adaptation page on PED website and incorporate into social media platforms	B.6.2, B.6.7, C	Tribe	Climate	Educating		FY15-16 CAA 10	Training, E&O	Funded	Updated website	
2016	Develop, test, evaluate, and deliver E&O literature, materials, and activities on climate change issues and opportunities relating to annual objectives (see combined annual E&O plan)	B.6.2, B.6.3, B	Tribe	Climate	Educating		FY15-16 CAA 10	Training, E&O	Funded	Climate Change E&O activities and materials	
2016	Identify, pursue, and secure funding for 2017 ETEP Climate Change Priority Program objectives (see combined annual funding plan)	B.8.3, C.3.5	Tribe	Climate	Funding					Funding for Climate Change objectives	
2016	Prepare and submit progress reports, financial reports, and grant drawdown requests for efforts and activities under the climate change program area	B.2.4, B.3.6	Tribe	Climate	Reporting					Reports and drawdown requests to agency/tribe	
2016	Participate in local/state/federal forums to obtain information and pursue partnerships on climate change issues and opportunities that relate to annual objectives	B.6.8, C.3.20	Tribe	Climate	Collaborating		FY16-17 GAP W	Training/Educat	Funded	Details on meetings and new partnerships	
2017	Annually review and update the ETEP Climate Change Component, obtaining input from relevant departments, leaders, and other stakeholders	A.1, A.3, B.5.1	Tribe & EPA	Climate	Planning	Yes				Updated Perpetual 4-Year ETEP Component	
2017	Develop a climate change adaptation/preparedness plan	C.3.15	Tribe	Climate	Planning					CC adaptation plan	
2017	Obtain staff training to build skills and capacities relating to the climate change program area objectives (see combined annual training plan)	B.2.2, B.2.3, C	Tribe	Climate	Training	Yes				New staff skills; Training details	
2017	Develop, test, evaluate, and deliver E&O literature, materials, and activities on climate change issues and opportunities relating to annual objectives (see combined annual E&O plan)	B.6.2, B.6.3, B	Tribe	Climate	Educating	Yes				CC education & outreach activities/materials	
2017	Identify, pursue, and secure funding for 2018 ETEP Climate Change Priority Program objectives (see combined annual funding plan)	B.8.3, C.3.5	Tribe	Climate	Funding	Yes				Funding for Climate Change objectives	
2017	Prepare and submit progress reports, financial reports, and grant drawdown requests for efforts and activities under the climate change program area	B.2.4, B.3.6	Tribe	Climate	Reporting	Yes				Reports and drawdown requests to agency/tribe	
2017	Participate in local/state/federal forums to obtain information and pursue partnerships on climate change issues and opportunities that relate to annual objectives	B.6.8, C.3.20	Tribe	Climate	Collaborating	Yes				Details on meetings and new partnerships	
2018	Begin a climate change adaptation/preparedness program and pilot implementation of the adaptation/preparedness program and plan	C.3.15	Tribe	Climate	Implementing					Climate Change Adaptation Program Pilot Implementation	
2018	Annually review and update the ETEP Climate Change Component, obtaining input from relevant departments, leaders, and other stakeholders	A.1, A.3, B.5.1	Tribe & EPA	Climate	Planning	Yes				Updated Perpetual 4-Year ETEP Component	

# TRIBES AS GOVERNMENTS

- ▶ Technically, a Tribal Reservation is a state-within-a-state
- ▶ California has 20+... in San Diego Co.
- ▶ Function as sovereign nations, but...
  - ▶ Rely on Federal funding
  - ▶ Rely on County and State assistance
  - ▶ Some Tribes lack basics

# TRIBES AS CULTURES

- ▶ Years of being screwed over
- ▶ Some wealthy, most poor
- ▶ Approach as a friend
- ▶ “What do you need? How can we help with that?”
- ▶ **BRING FOOD!**

# THE ENEMIES



# The San Luis Rey River and 76 Highway

- ▶ Heavily altered by people
- ▶ Rural yet near to major metropolitan areas
- ▶ Altered landscape and water movement
- ▶ Corridor for movement
  - ▶ Weeds
  - ▶ Animals
  - ▶ People

# FUTURE NEEDS

- ▶ Better communication between land owners
- ▶ More partnerships! - Decreasing funds?
- ▶ Be a jack-of-all-trades!
- ▶ Maps, maps, maps
  - ▶ Plant distribution changes?
  - ▶ Projected climates locally
  - ▶ Refugia for wildlife
  - ▶ Refugia for weeds
- ▶ Manage for a future climate?
- ▶ Traditional Ecological Knowledge (TEK)

# FUTURE PROJECTS

- ▶ INCREASED OUTREACH AND COMMUNICATION
  - ▶ Do we need a meeting focused on this?
- ▶ Community gardens and better landscapes
- ▶ MORE RESTORATION
- ▶ Consider alternatives for wildlife under climate variabilities
- ▶ Get people outside? - Hiking? Hunting? Gathering? Gardening?
- ▶ “Eat the weeds”? Use the weeds?
- ▶ TEK





Pala Environmental Department - Think Globally, Act Tribally

**KURT BROZ**

kbroz@palatribe.com

(760) 891 - 3550

[www.facebook.com/PalaEnvironmentalDepartment](http://www.facebook.com/PalaEnvironmentalDepartment)

[ped.palatribe.com](http://ped.palatribe.com)

