



Aerial Lifts and Arundo Control  
in the Sacramento San Joaquin Delta

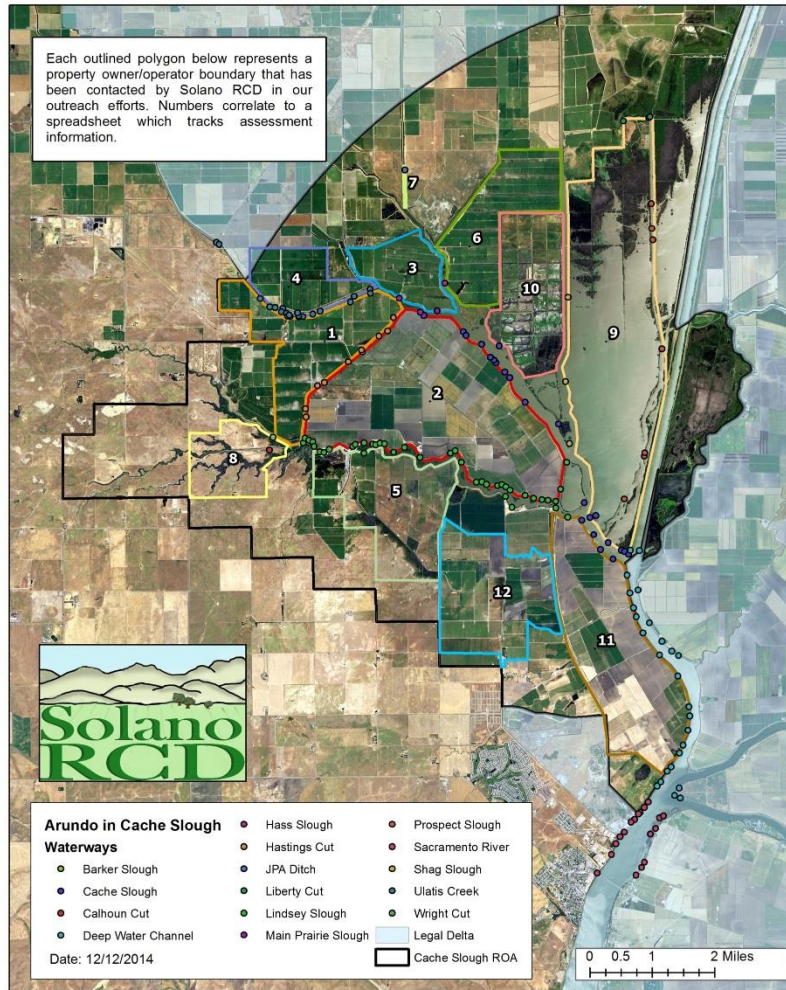
Too Much Arundo  
(and not enough reach)

Mark Newhouser  
Sonoma Ecology Center

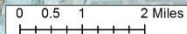
Arundo Eradication Project funded by the Sacramento San Joaquin Delta Conservancy  
and California Department of Water Resources

# Preliminary Arundo Project Interest Assessments

Each outlined polygon below represents a property owner/operator boundary that has been contacted by Solano RCD in our outreach efforts. Numbers correlate to a spreadsheet which tracks assessment information.



- Arundo in Cache Slough Waterways**
- Barker Slough
  - Cache Slough
  - Calhoun Cut
  - Deep Water Channel
  - Hass Slough
  - Hastings Cut
  - JPA Ditch
  - Liberty Cut
  - Lindsey Slough
  - Main Prairie Slough
  - Prospect Slough
  - Sacramento River
  - Shag Slough
  - Ulatis Creek
  - Wright Cut
- Legal Delta  
 Cache Slough ROA
- Date: 12/12/2014





Liberty Cut  
 Prospect Slough  
 Shag Slough  
 Cache Slough  
 JPA Ditch  
 Haas Slough  
 Main Prairie Slough  
 Ulatis Creek  
 Hastings Cut  
 Barker Slough  
 Calhoun Cut  
 Lindsey Slough  
 Wright Cut  
 Deep Water Channel  
 Sacramento River

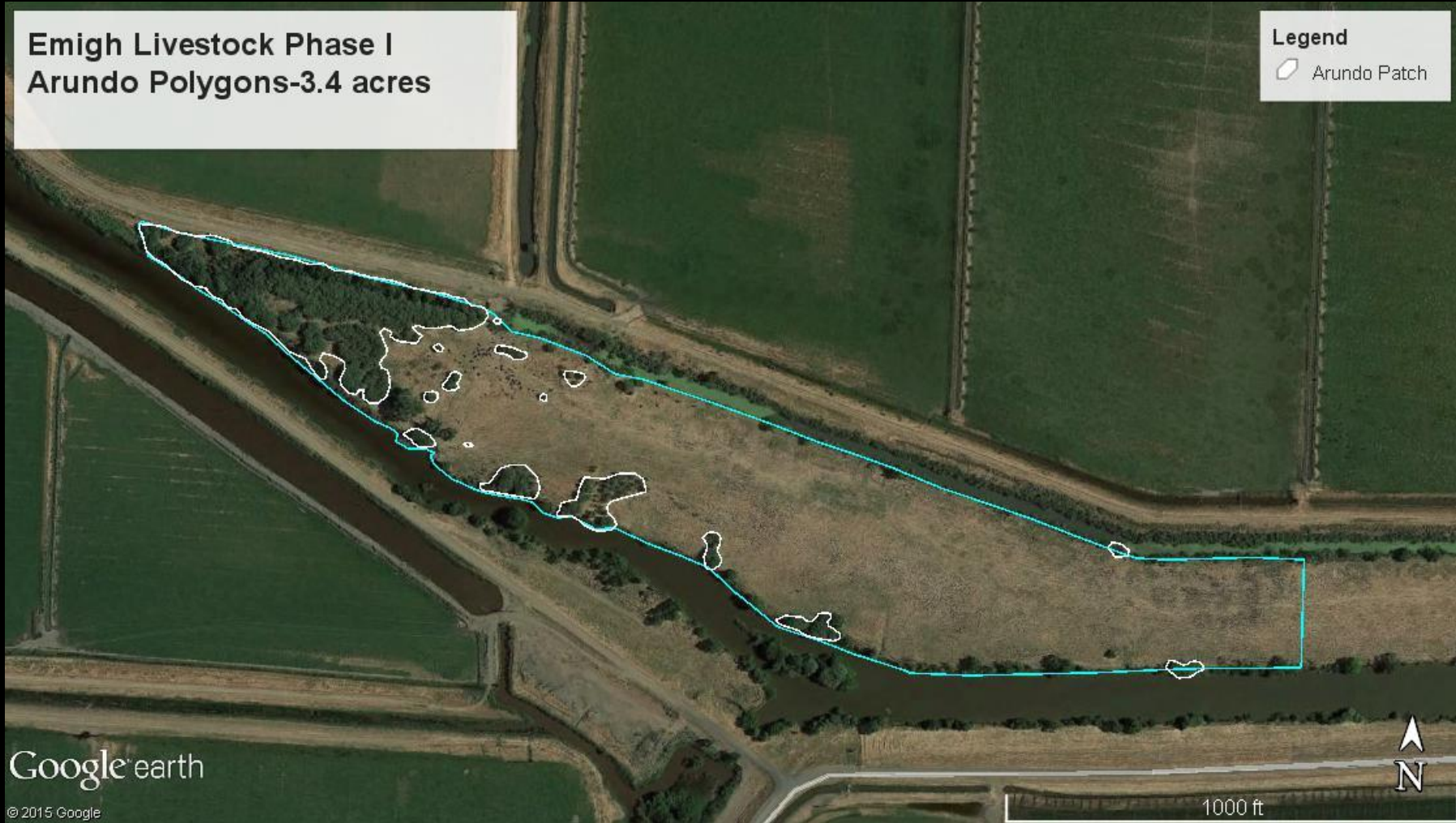
September 2013 Arundo Survey Area  
 Within the Cache Slough Complex-  
 Solano County



Google earth

**Emigh Livestock Phase I  
Arundo Polygons-3.4 acres**

**Legend**  
Arundo Patch



Google earth

© 2015 Google

1000 ft







Hard to Get To?

Too high?





# Primitive Man Explores Application Methods before discovery of aerial lift

The solution...



# Reach 2000

Sprays from where you can't





Sprays from above





Sprays from below



Sprays from out  
over the water





Allows careful selection of what you spray



Effectively kills what you spray





A bird's eye view of what you are spraying  
or monitoring

# Aerial Lift Pros and Cons

## Pros

- Horizontal and vertical advantage – spray from above or away from water
- Avoid dangerous access on foot (concrete riprapped banks)
- Safer application, less exposure
- More thorough application for more effective control
- Faster, more precise application
- Readily available and affordable rental and delivery (even remote sites)

## Cons

- Requires training, can be dangerous to operate
- Slow to move between locations (6mph on roads)
- Must have drivable egress to deliver and move
- Hose handling requires constant assistance and management



# Aerial Lift Options

## 4-WD Boom Lift –

- ideal for level firm stable surfaces – levees and roads, no stabilizers
- furthest lateral reach (45'-65')
- moderately expensive to rent

## Trailer Boom Lift –

- towed behind 4WD truck, self leveling stabilizers
- moderate lateral reach (25'-35')
- least expensive

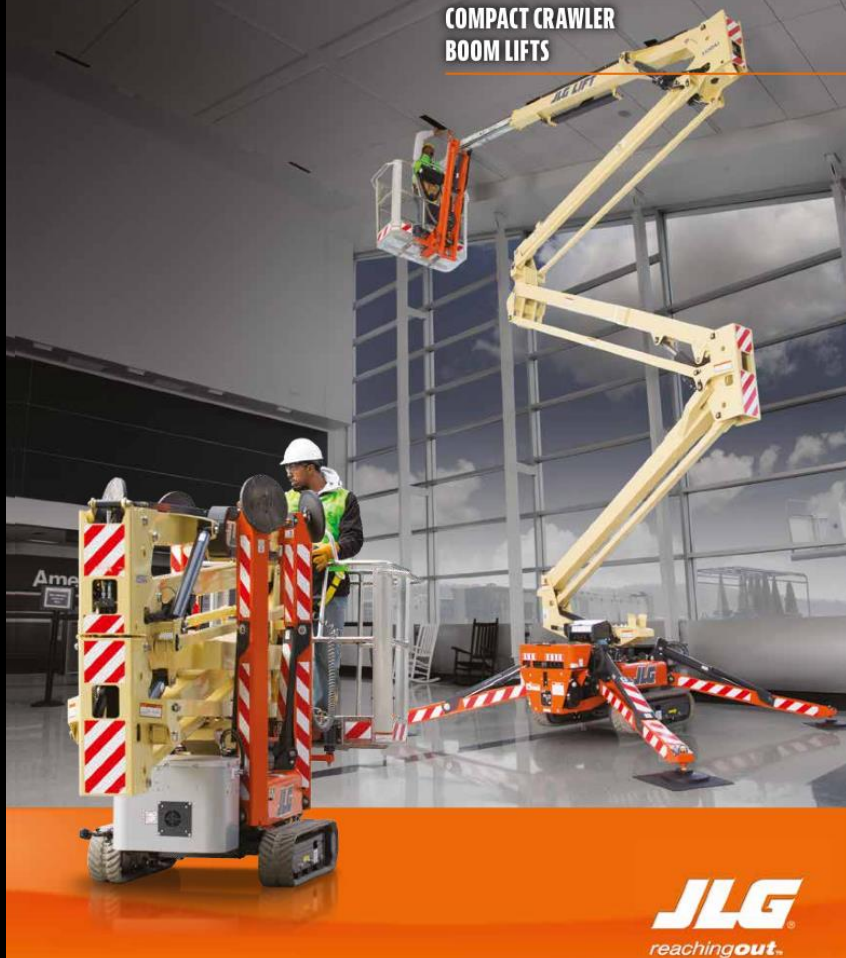
## Atrium Lift – self propelled,

- rubber tracks can navigate unlevel ground, self leveling stabilizers,
- moderate lateral reach (25'-35')
- expensive





COMPACT CRAWLER  
BOOM LIFTS



**JLG**  
reaching out.

**TEUPEN**<sup>®</sup>  
...access redefined

## TL69A

Platform Height:  
68 ft 10 in (21 m)

Lateral Reach:  
36 ft 8 in (11.2 m)

Machine Width:  
3 ft 3 in (0.98 m)

Machine Height:  
6 ft 6 in (1.99 m)

Machine Weight:  
6,592 lbs (2,990 kg)

- Compact design, travels through a double door
- Light, low surface load for use on sensitive flooring
- Smooth, proportional electro-hydraulic controls
- Reliable and comprehensive safety control system
- Articulated design with two independently operable telescopic booms
- Onboard diagnostics
- Setup on slopes up to 30%
- Dual power for operating indoor and outdoor

**TEUPEN**<sup>®</sup>



Now available with Lithium Ion Batteries!

PO Box 938, Pineville, NC 28134  
info@teupen-usa.com  
teupen-usa.com | 877-838-7361

# Reach 2000

Available now wherever heavy  
equipment is rented





Mark Newhouser  
Mark@sonomaecologycenter.org  
(707) 996 0712x103