

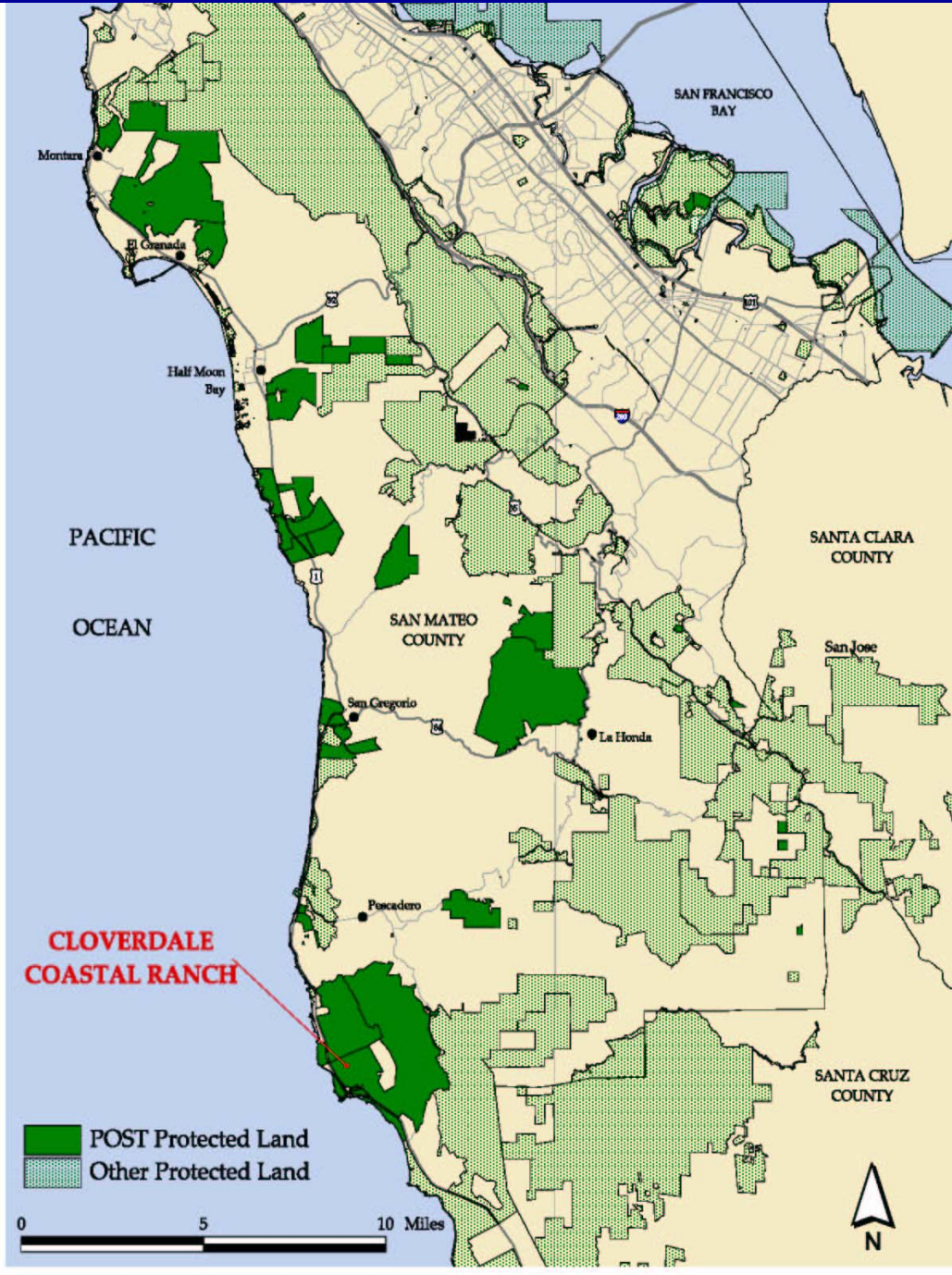
PAMPAS GRASS REMOVAL PROJECT

CLOVERDALE COASTAL RANCHES

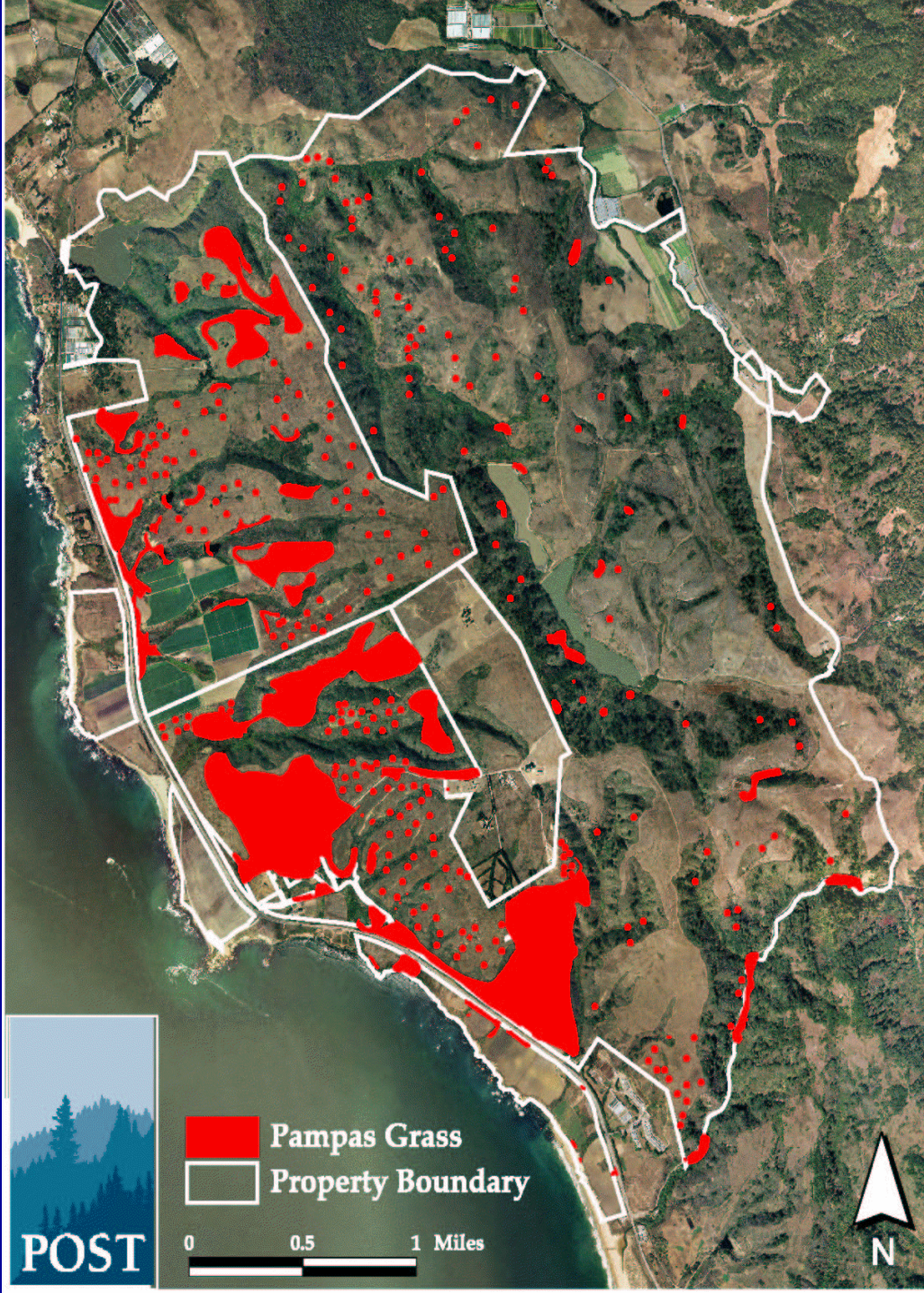


PENINSULA OPEN SPACE TRUST



October 6, 2005







POST

 Pampas Grass
 Property Boundary

0 0.5 1 Miles

N

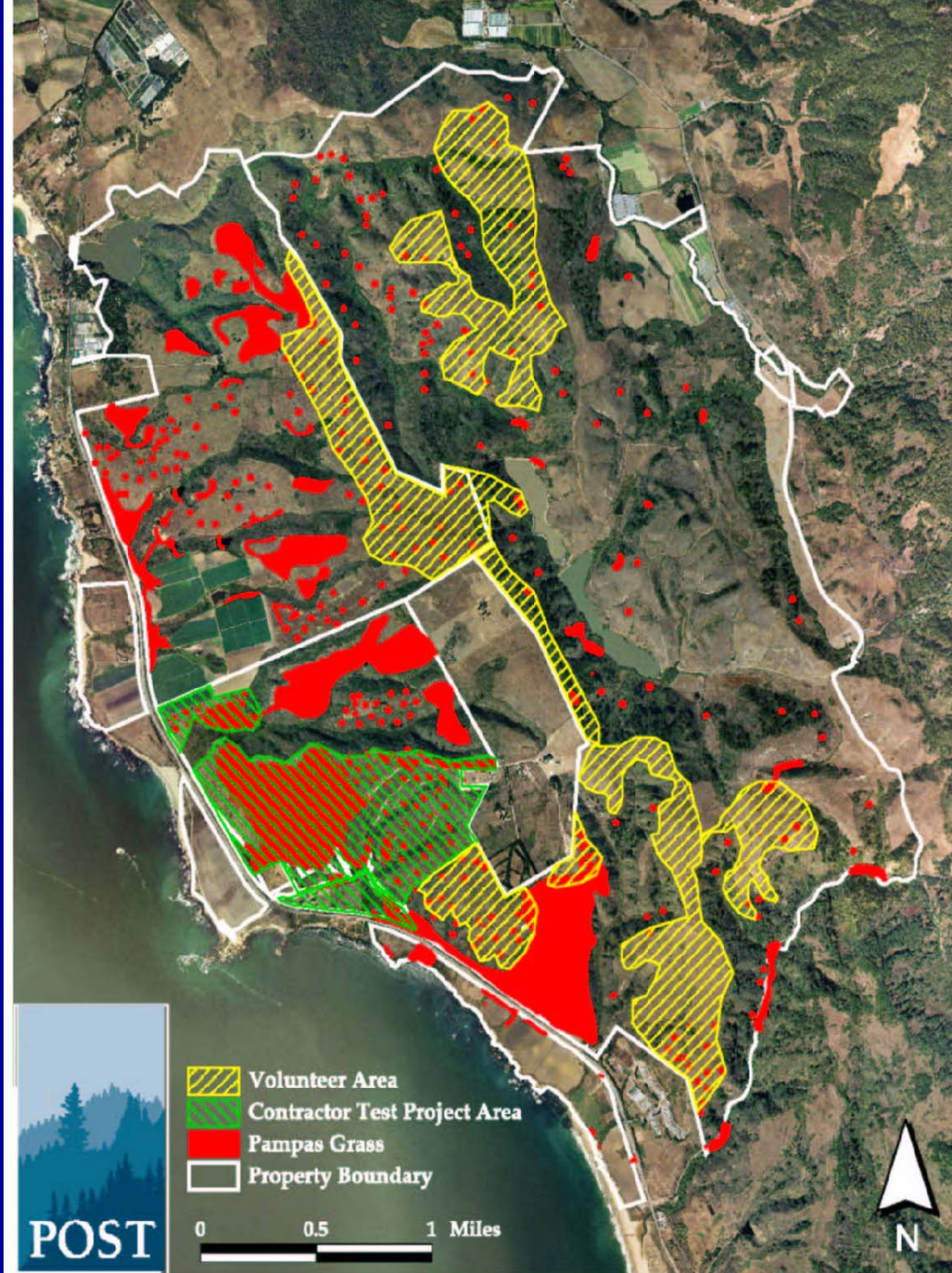




Cloverdale Coastal Ranches

Pampas Grass Control Program

2002-2003



















2003 Test Project (350 acres)

Summary of Treatment Methods and Costs

Method	# of Plants Treated	Cost per Plant	Total Cost per Method
Manual	5939	\$1.41	\$8,374
Excavator (includes operator and ground support)	6178	\$2.48	\$15,321
Hand Spraying	33,960	\$0.60	\$20,376
Tractor Spraying	250,000	\$0.08	\$20,000

Total Plants Treated > 296,000

Total Project Cost = \$71,760*

*Total Project Cost includes 12% overhead rate for POST staff involvement

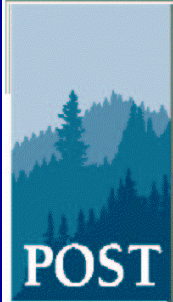
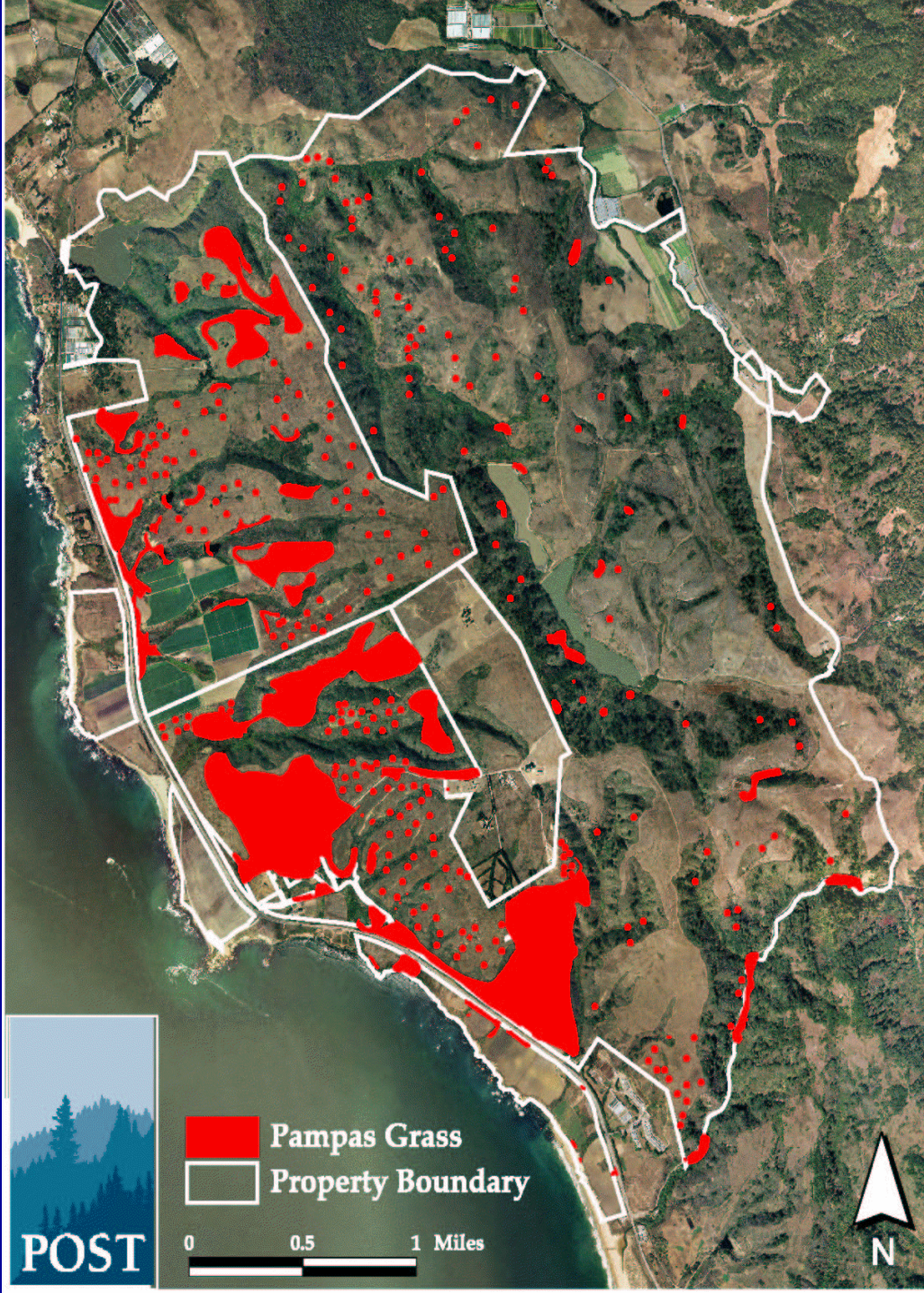
2003 – 2005 Summary



Summary of Treatment Methods and Costs

Year	Acres Treated	Plants Treated	Cost*
2003	351	296,100	\$71,200
2004	618	599,150 ■ 16,250 (re-treat)	\$50,000
2005	411	405,000 30,000 (re-treat)	\$52,000
TOTALS	1,380	1,346,250	\$173,200**

*Total Project Cost includes 12% overhead rate for POST staff involvement

**Overall average treatment cost per plant ~\$.12



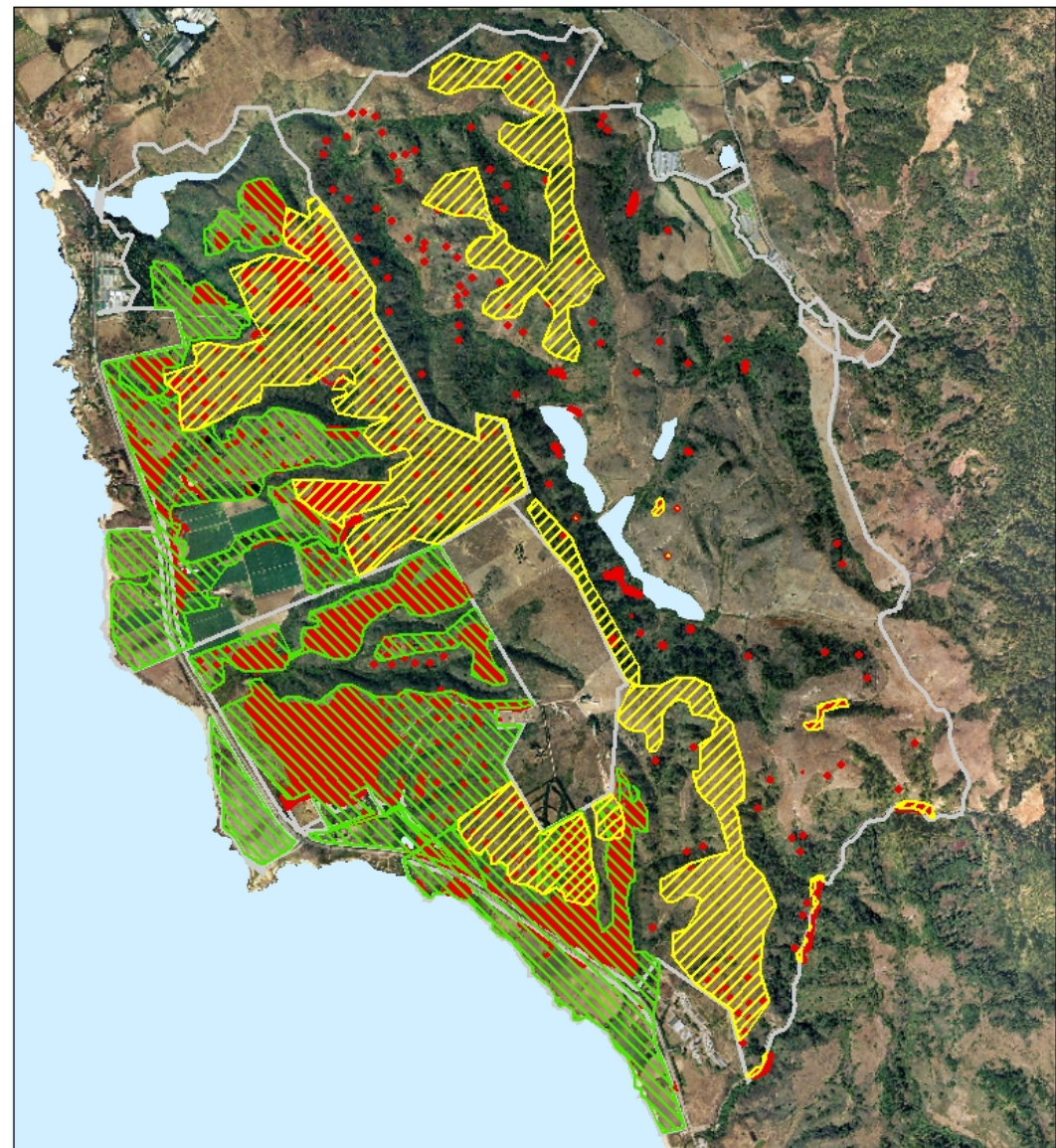
 Pampas Grass
 Property Boundary







Cloverdale Coastal Ranches

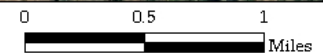
Pampas Grass Control Program

2002-2005



Pampas Grass Removal Areas

-  Volunteer Area
-  Contractor Test Project Area
-  Pampas Grass
-  Cloverdale Boundary



Map date: 9/30/05
Scale: 1:35,000
Photo Date: August 2002
Sources: USGS, Airphoto USA, San Mateo County, POST
Derived from data that is Copyright 2003,
San Mateo County, all rights reserved









2002-2005 VOLUNTEER PROGRAM SUMMARY

Year	Volunteer Workdays	Volunteer Hours	Plants Treated	Cost*
2002	5	168	9,000	\$1,180
2003	10	318	29,700	\$1,910
2004	10	216	33,500	\$2,320
2005 (estimate)	14	462	35,000	\$2,350
TOTALS	39	1,164	167,200	\$7,760**

*Cost includes equipment and herbicide (And lunchtime drinks for volunteers...)

**Average cost per plant treated ~\$.04

