



Wildland Fire Resource Advisor: Communication Strategies

Jun Kinoshita

Fire Archeologist

Yosemite National Park, California





Vectors



Vehicles



Supplies



People





Exotic and Invasive Plants

- Seed sources local
- Seeds transported by firefighting resources... from across the western United States



Spotted knapweed,
Montana



Yellow
Star Thistle,
E. Oregon



Common
Crupina,
Washington



Euphorbia terracina
Invasive weed

Euphorbia terracina,
Southern California



Bufflegrass,
Arizona







Wildland Fire Resource Advisor

...serves as a single point of contact between fire managers and resource managers. As the position continues to evolve, objective or intent-based communication strategies used in incident management are making their way into project management. Understanding the spread and control of invasive plants illustrates the evolution of this position and many of the emerging communication strategies.

Incident Command System



Working with a Team (ICT)



Working with the team

- Fire Management Plans
- Wildland Fire Decision Support System
- Delegation of Authority
- Suppression Damage Repair Plan
- BAER Plans (BAR)

Strategies for Effective Advising (Communication)

- Be Prepared
- Be Happy
- Address conflicts with care
- Communicate
- Use the Authority of the Resource



Be Prepared

- READ Kit
- Data
- Programmatic Approach
- Practice



Strategy: Be Happy*

- Don't be afraid to ask for help
- Manage Your time effectively
- Get your rest
- Know and respect your limitations
- Strive towards a better understanding of fire in landscapes

Ok, maybe not “Happy” but take care of yourself...



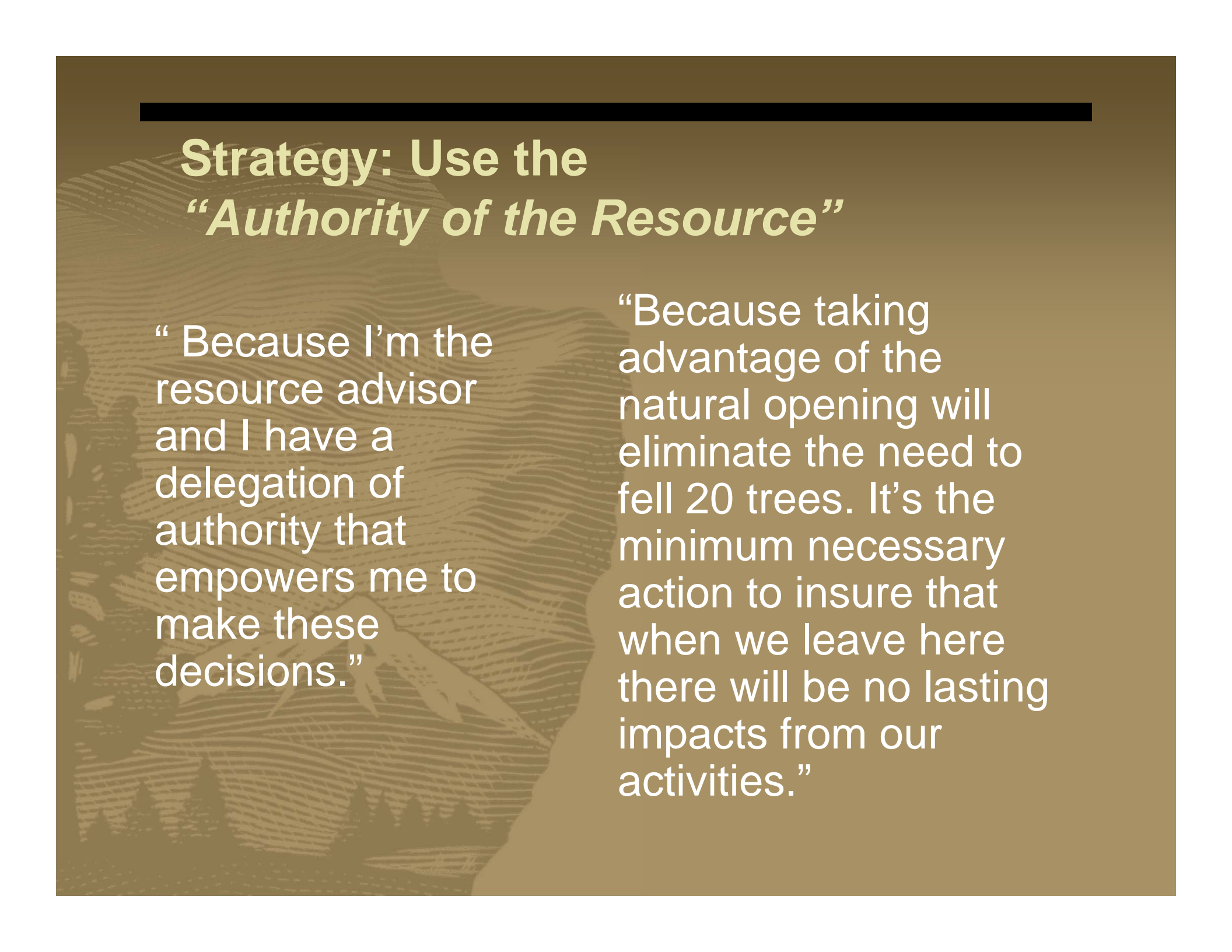
Strategy: Addressing Conflicts

- Be Proactive
- Use diplomacy before authority
- Resolve disagreements at the lowest appropriate level
- Use ICS chain of command
- If you and IC are at an impasse, go back through line officer
- Document Issues

Strategy: Communication

- IC introduction “What can I do for you?”
- Develop relationship with team
- Follow-through on request
- Keep issues in context relative to the fire
- Avoid adding stress
- Be available





Strategy: Use the *“Authority of the Resource”*

“ Because I’m the resource advisor and I have a delegation of authority that empowers me to make these decisions.”

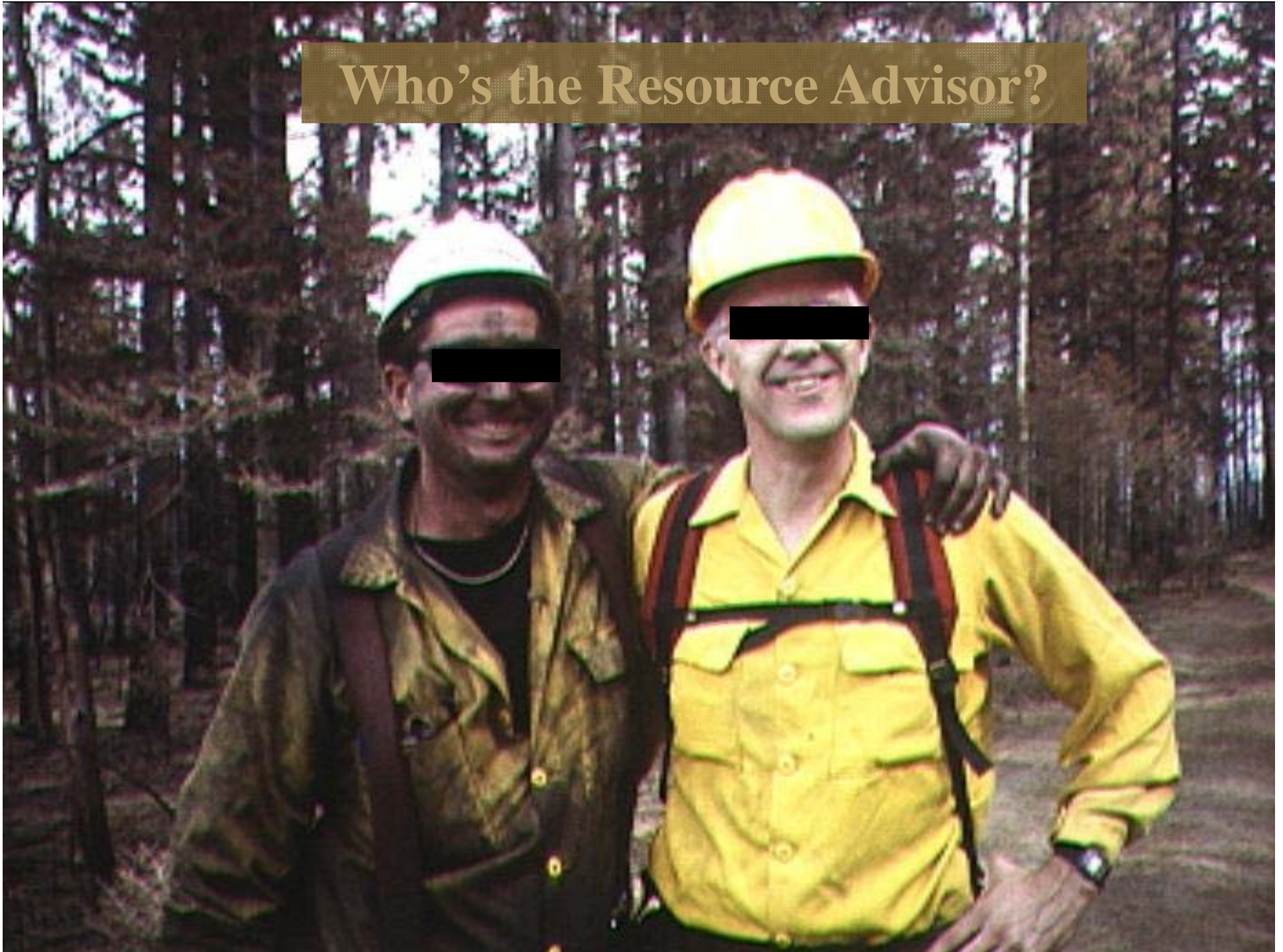
“Because taking advantage of the natural opening will eliminate the need to fell 20 trees. It’s the minimum necessary action to insure that when we leave here there will be no lasting impacts from our activities.”

And remember...

- you are an advisor, not a decision-maker
- at times, you will be uncomfortable
- you may be shocked
- you will be frustrated
- remain assured you are filling one of the single most important roles in the fire organization



Who's the Resource Advisor?





The image is a promotional graphic for the game 'Plants vs. Zombies'. It features a central title 'PLANTS vs. ZOMBIES' set against a bright orange background. The word 'PLANTS' is rendered in large, green, 3D block letters with a slight shadow. Below it, the word 'vs.' is written in a simple, black font on a grey, tombstone-like shape. The word 'ZOMBIES' is in large, grey, 3D block letters with a shadow. Surrounding the text are various characters from the game. On the left side, there are several plants: a smiling Sunflower, a Peashooter, a Red Stinger, a Spikeweed, a Cherry Bomb, and a Pea-nibbler. On the right side, there are several zombies: a large, green, brain-eating zombie, a smaller zombie, a zombie with white fur, a zombie in a red hoodie, a zombie with a large afro, a zombie with a red helmet, and a zombie with a red and white striped helmet. The overall style is cartoonish and colorful.

PLANTS vs. ZOMBIES