



California State Parks











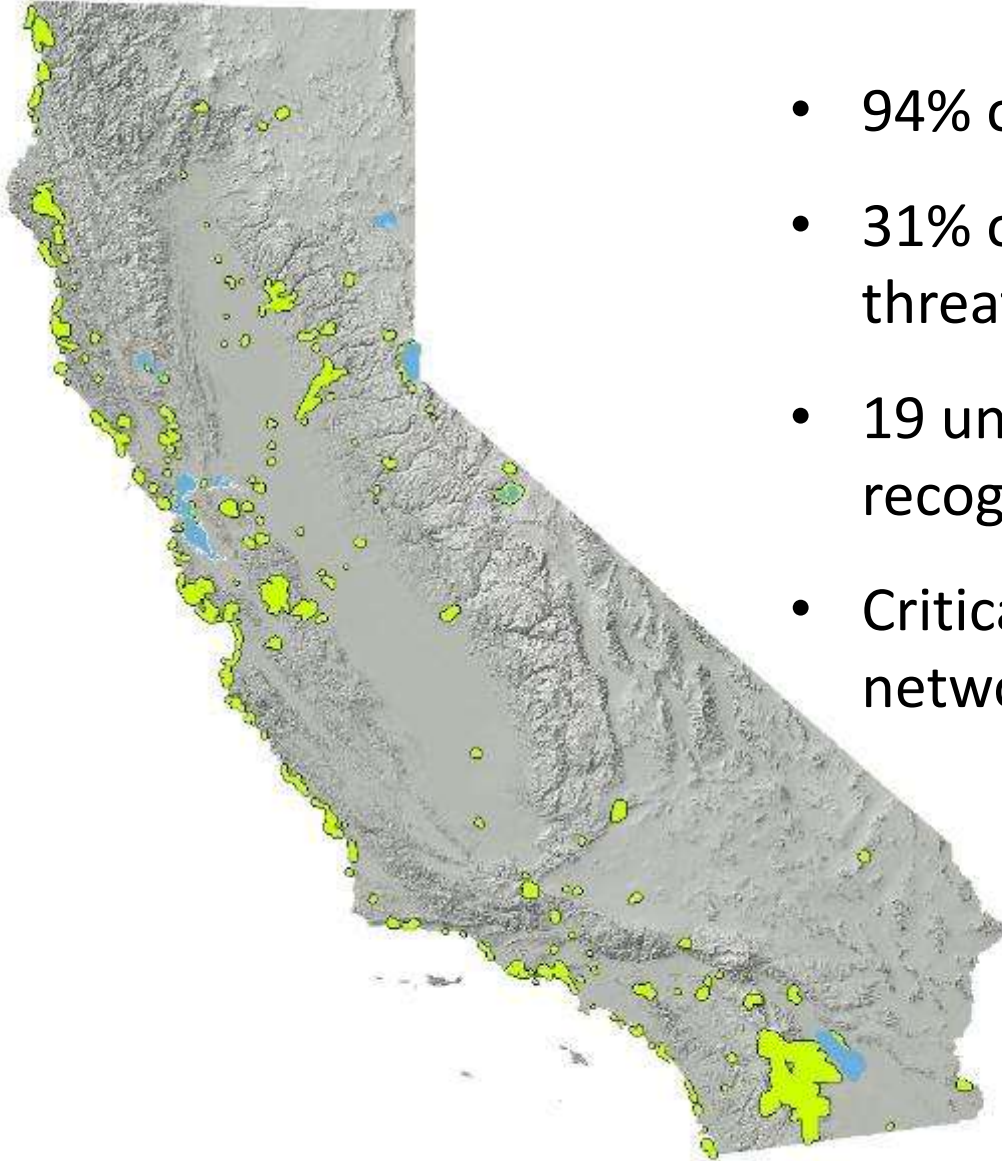








State Parks and Natural Resources



- 94% of land base is un-developed
- 31% of the state's endangered, threatened or rare species
- 19 units with national or international recognition
- Critical habitat nodes and linkages in networks of conserved lands


State Parks Mission

To provide for the health, inspiration and education of the people of California by helping to preserve the state's extraordinary biological diversity, **protecting** its most valued natural and cultural resources, and creating opportunities for high-quality outdoor recreation.

Wildlife Management in the National Parks (1963)

[T]he biotic associations within each park (should) be maintained, or ... recreated, as nearly as possible in the condition that prevailed when the area was first visited by the white man.

S Leopold *et al*



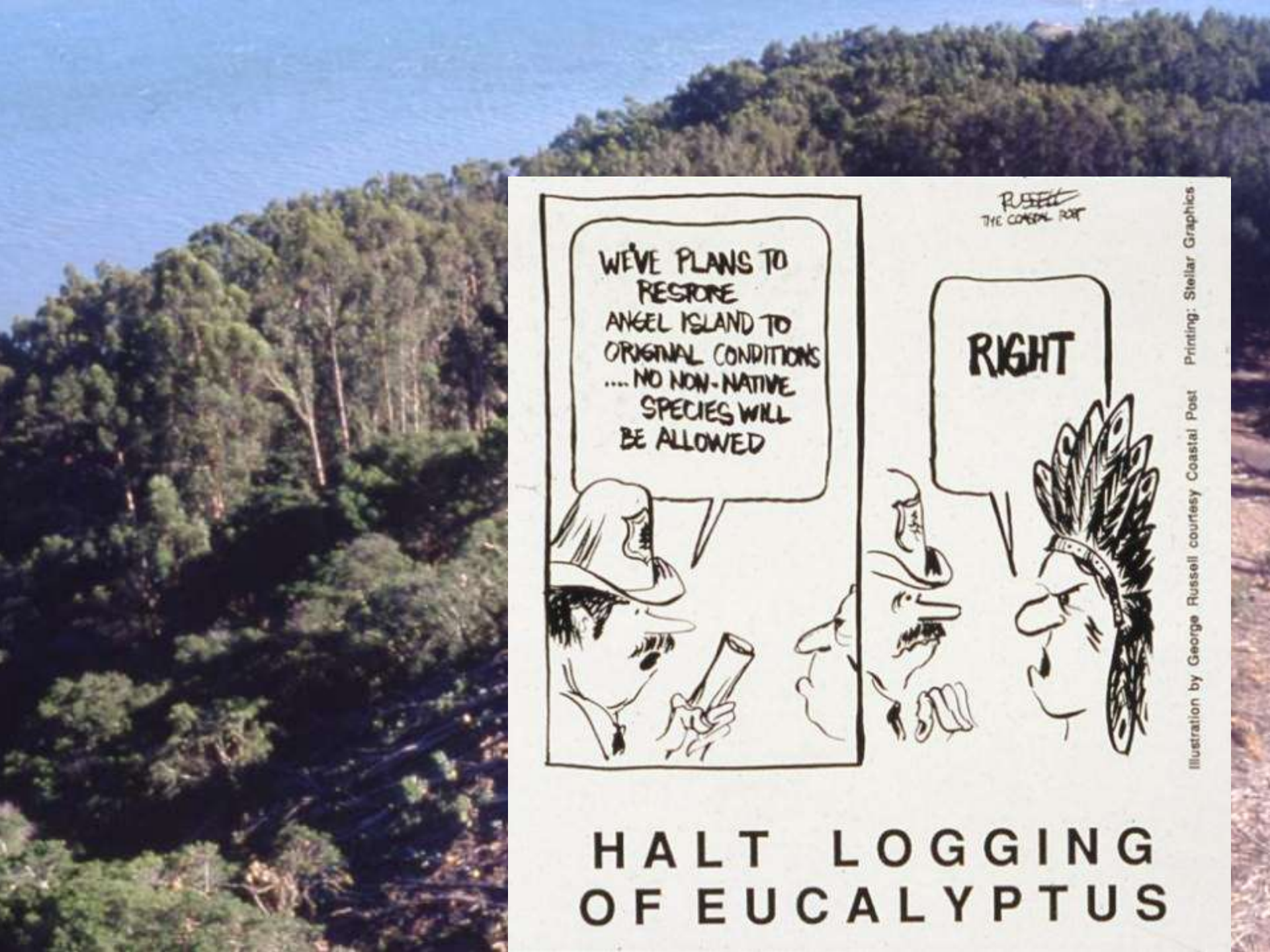
The purpose of state parks shall be to preserve outstanding natural, scenic, and cultural values, indigenous aquatic and terrestrial fauna and flora, and the most significant examples of ecological regions of California... (PRC §5019.53)

Each state park shall be managed as a composite whole in order to restore, protect, and maintain its native environmental complexes...(PRC §5019.53)







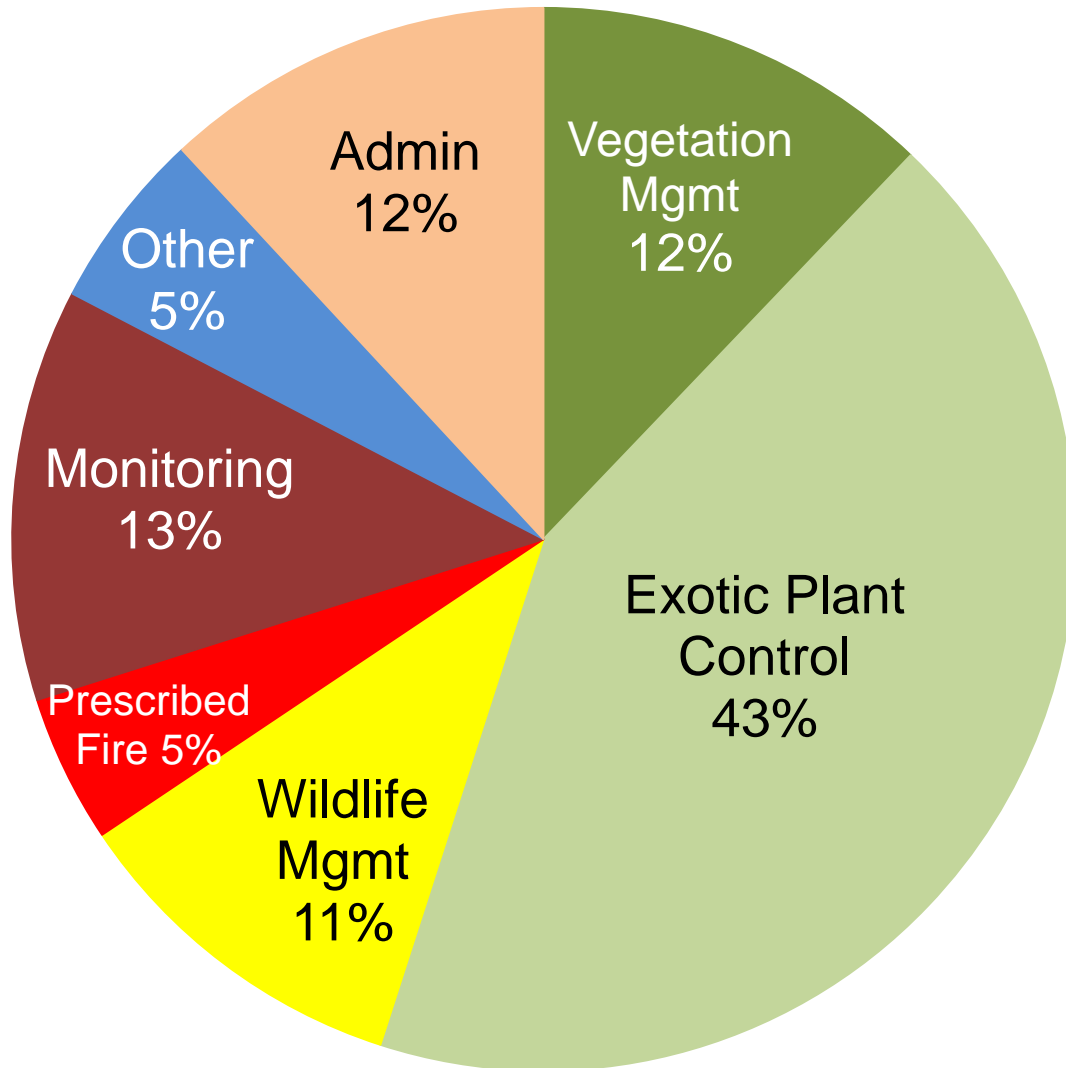


**HALT LOGGING
OF EUCALYPTUS**

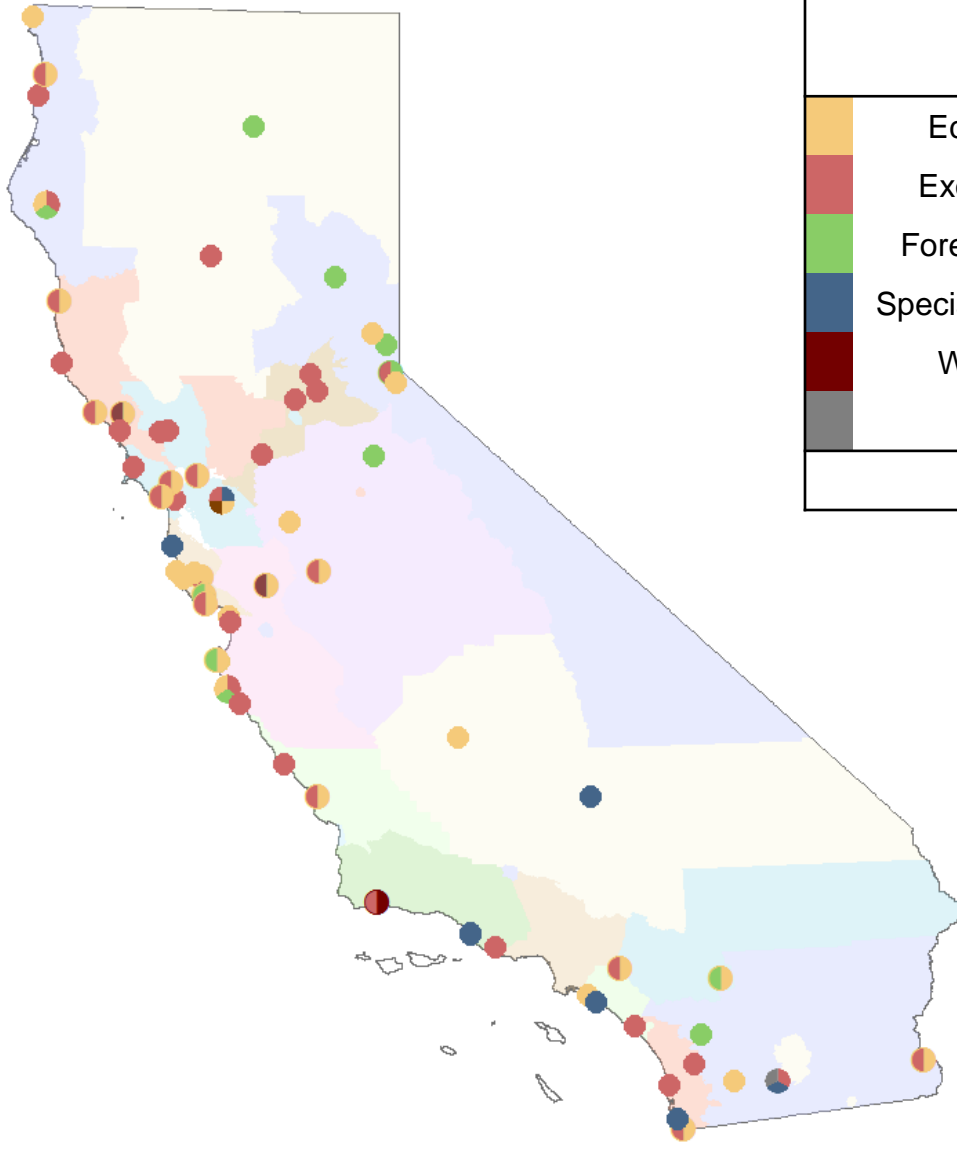


On-Going Maintenance Activities

Natural Resources



Restoration Project Investments 2006-2014



Category	Number of Projects	Acres Treated or Restored
Ecological Restoration	75	4,700 *
Exotic Plant Eradication	102	9,200 *
Forest Fuels Management	23	2,450
Special Species Management	23	NA
Wildlife Management	12	NA
Other	4	NA
Total	239	









2009



2012

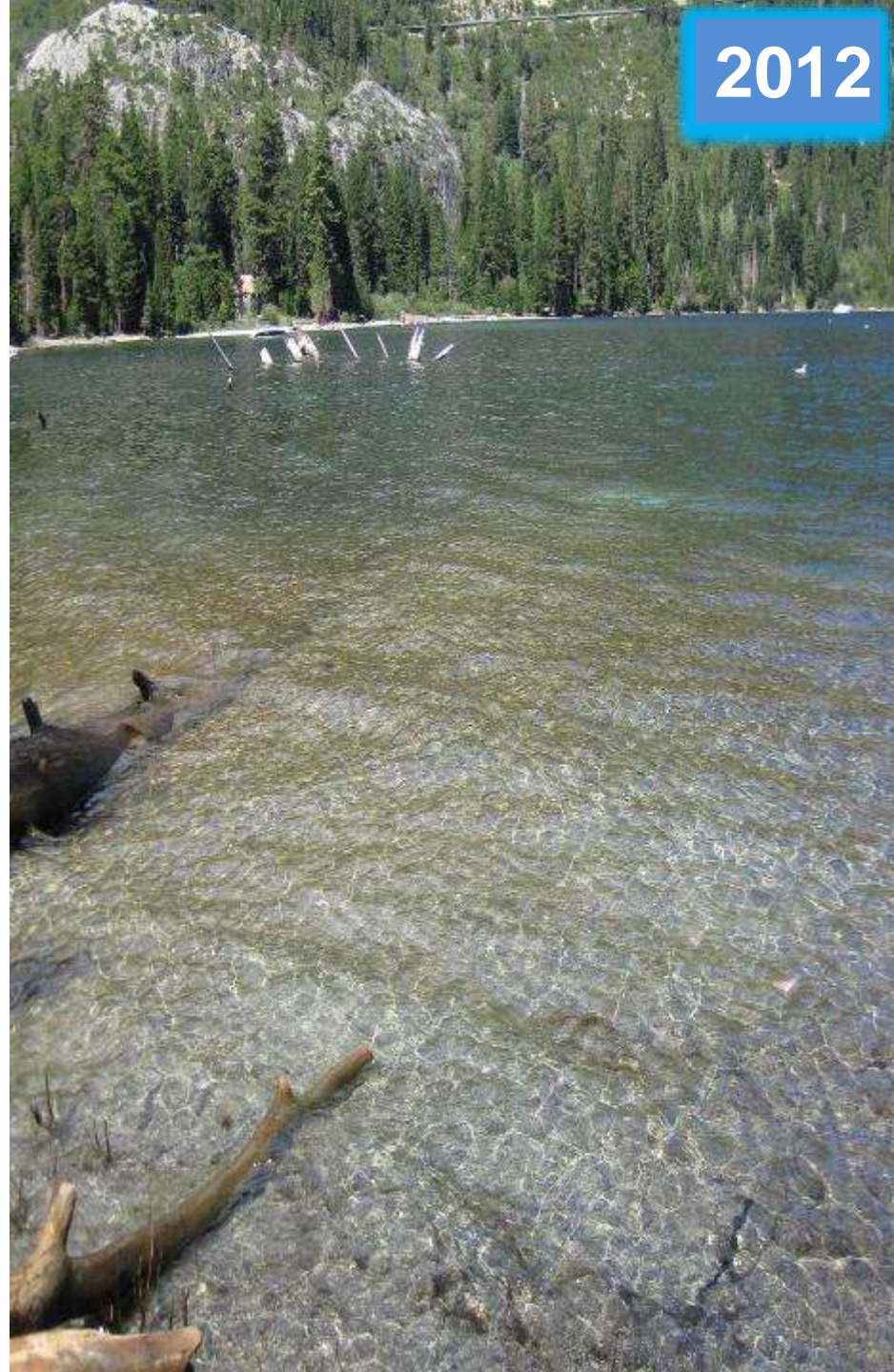
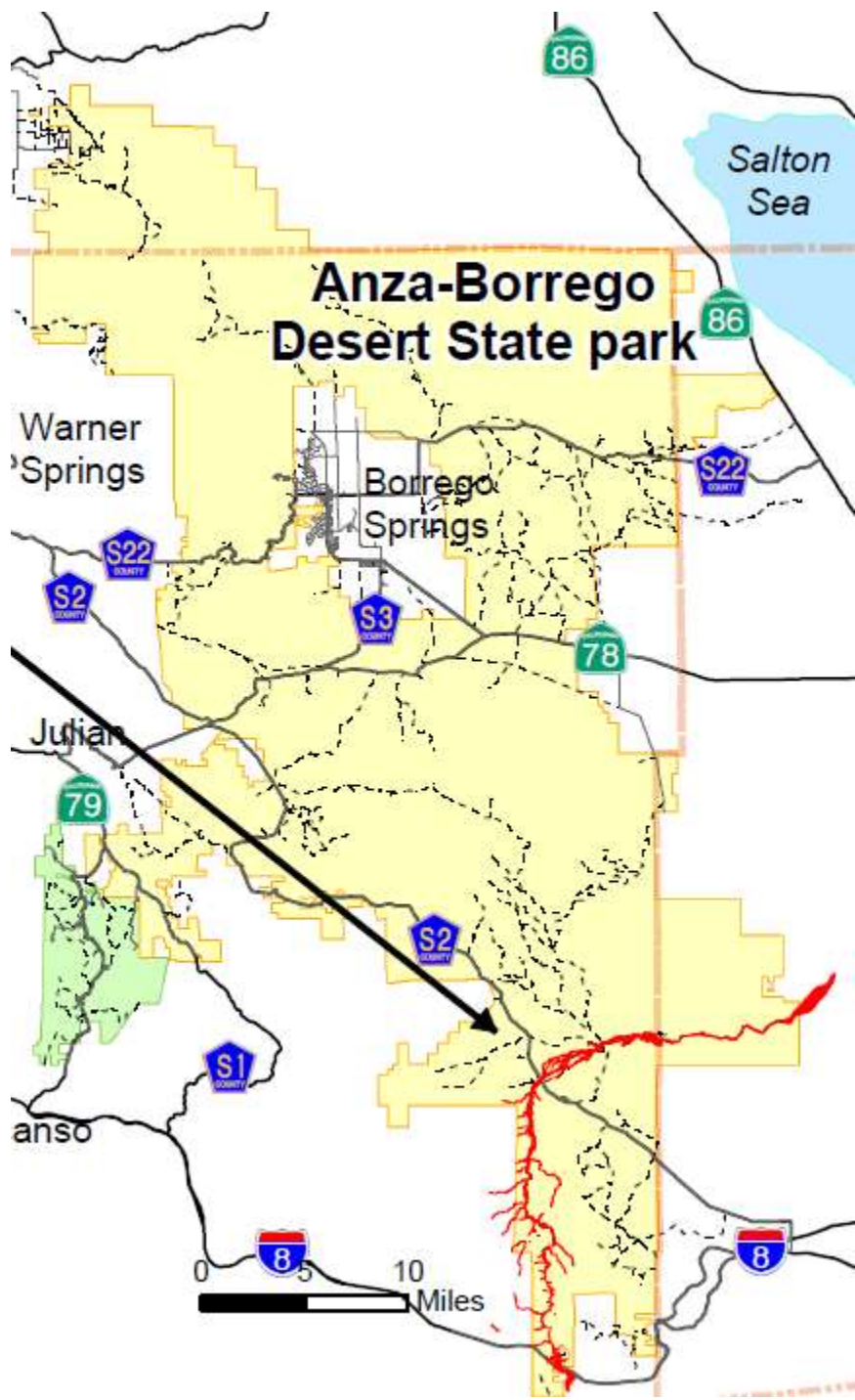
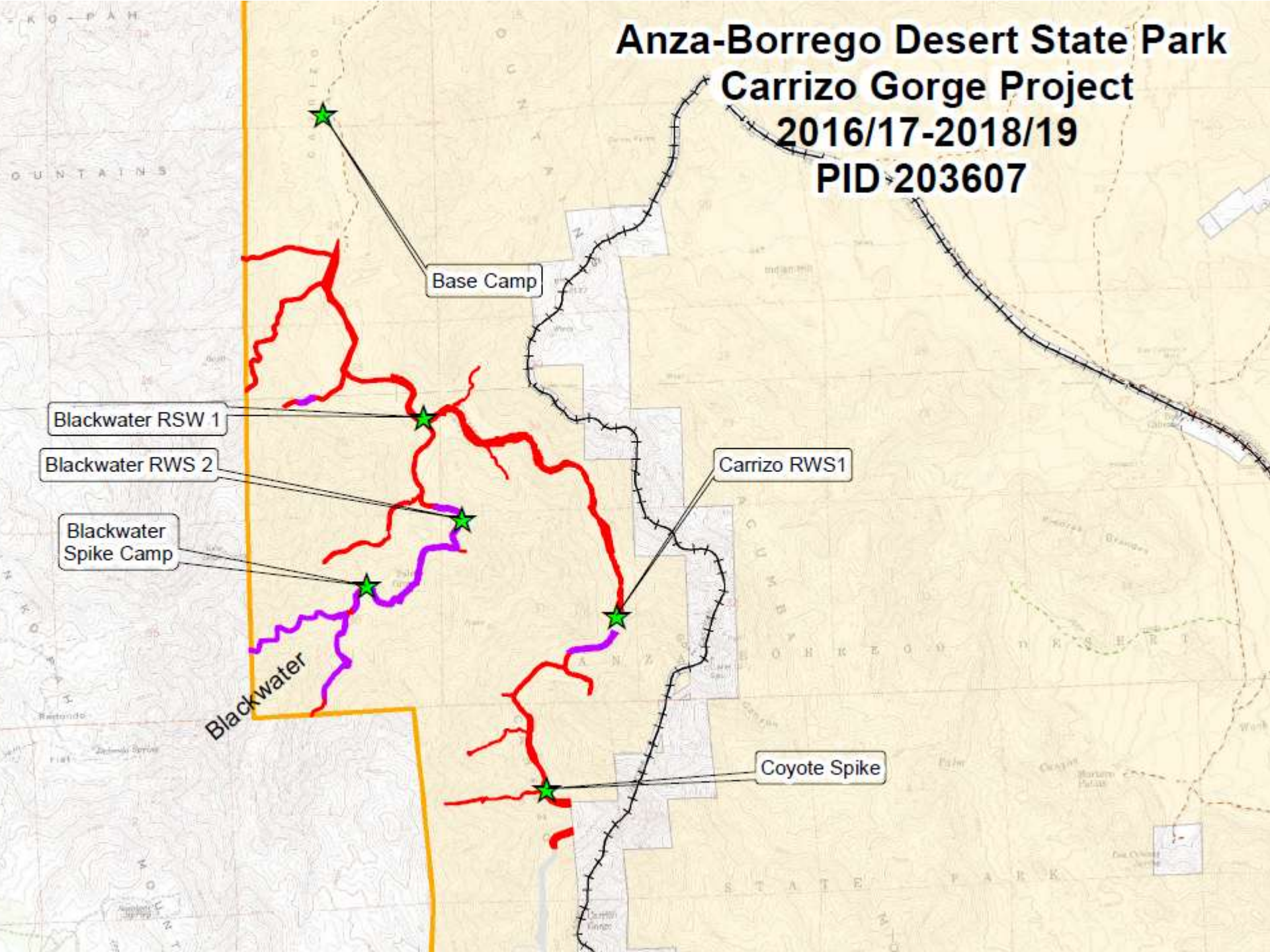


Photo – Phil Caterino Tahoe Divers Conservancy

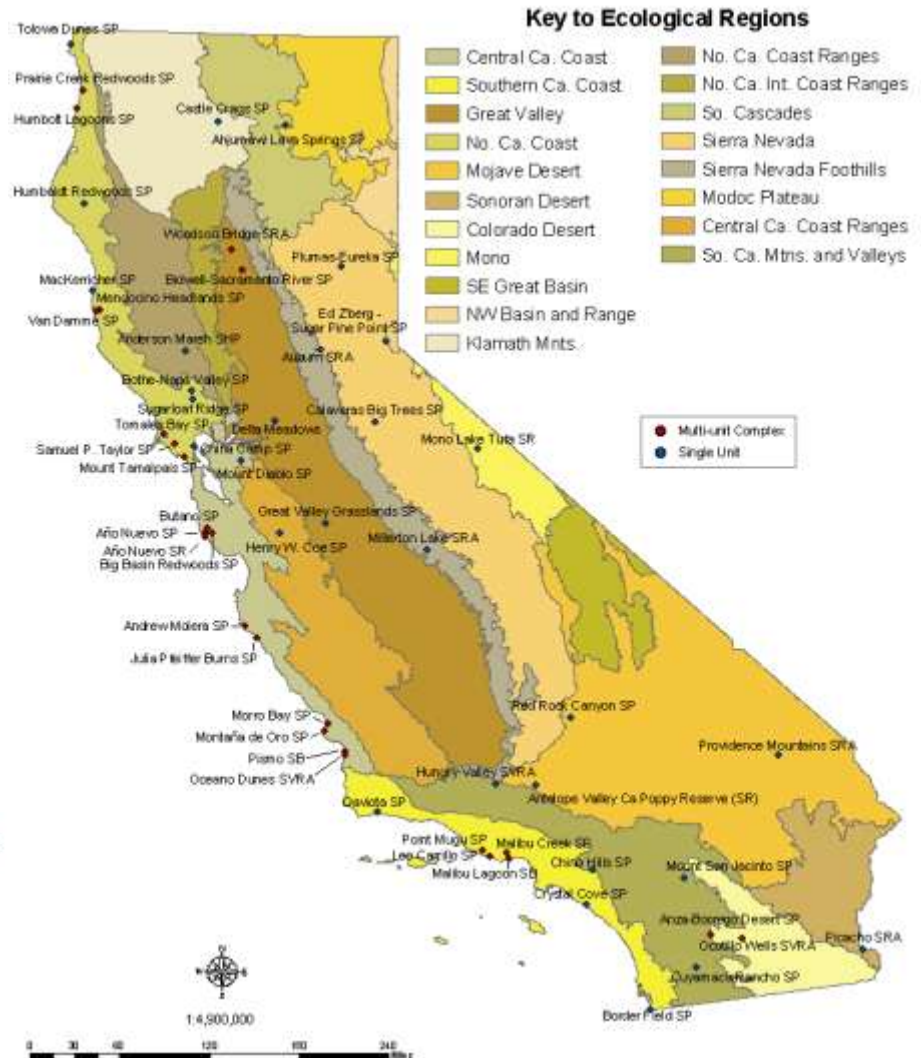
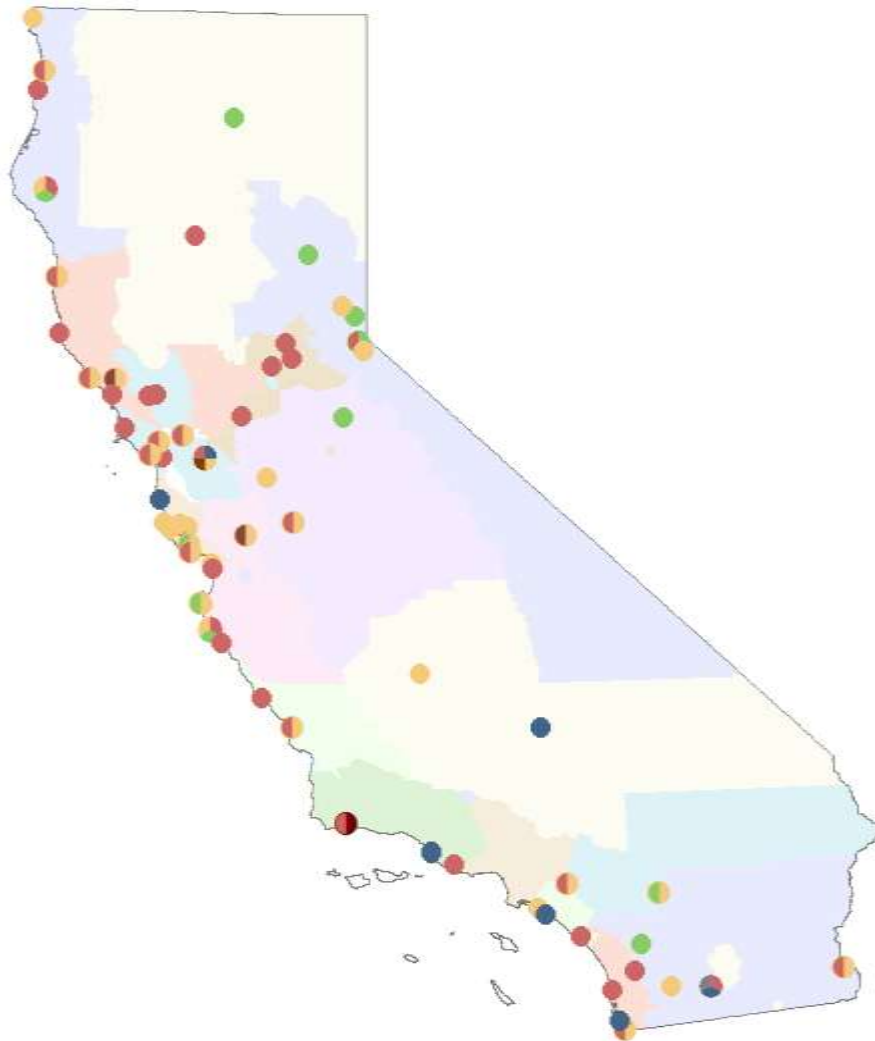


Anza-Borrego Desert State Park Carrizo Gorge Project 2016/17-2018/19 PID 203607

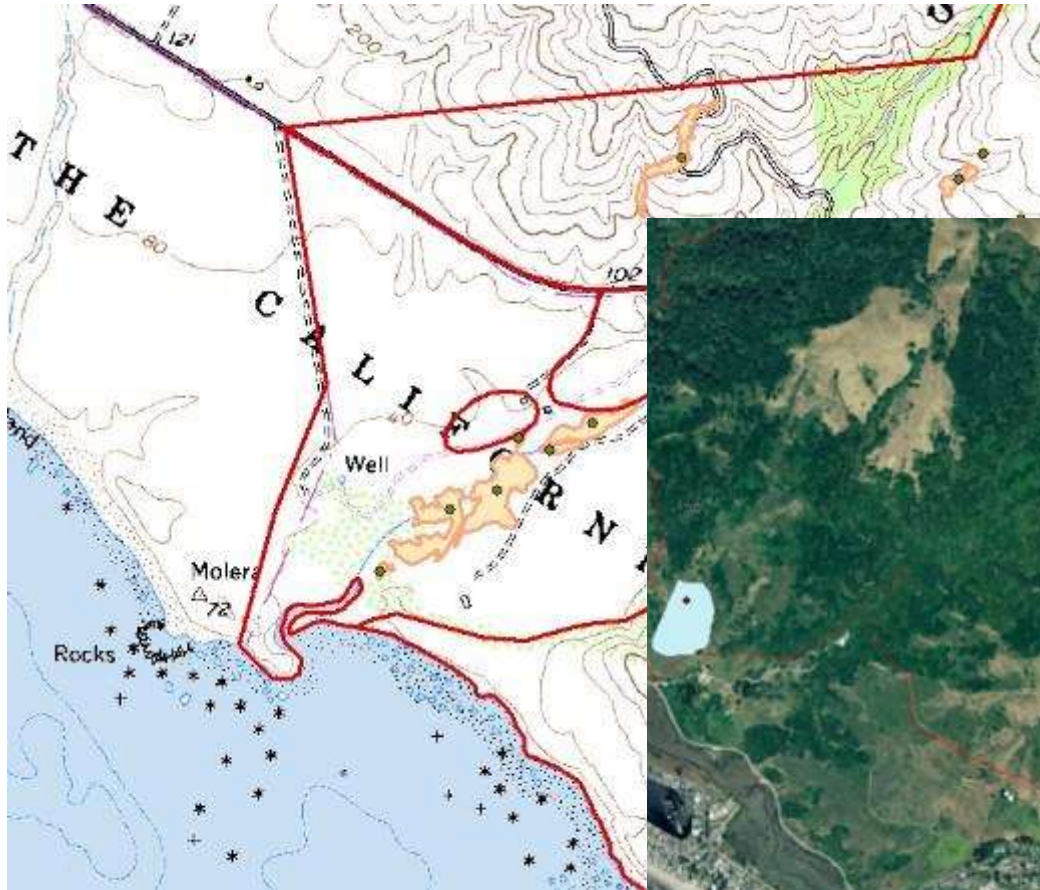




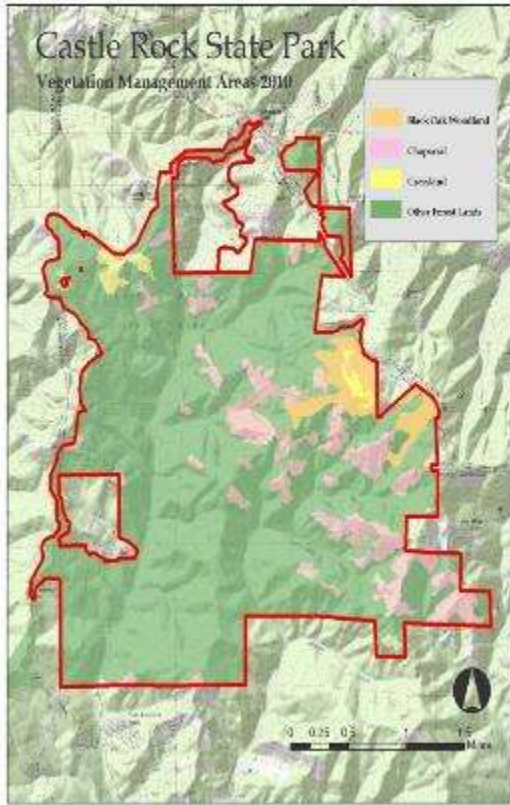
Restoration Project Investments 2006-2014



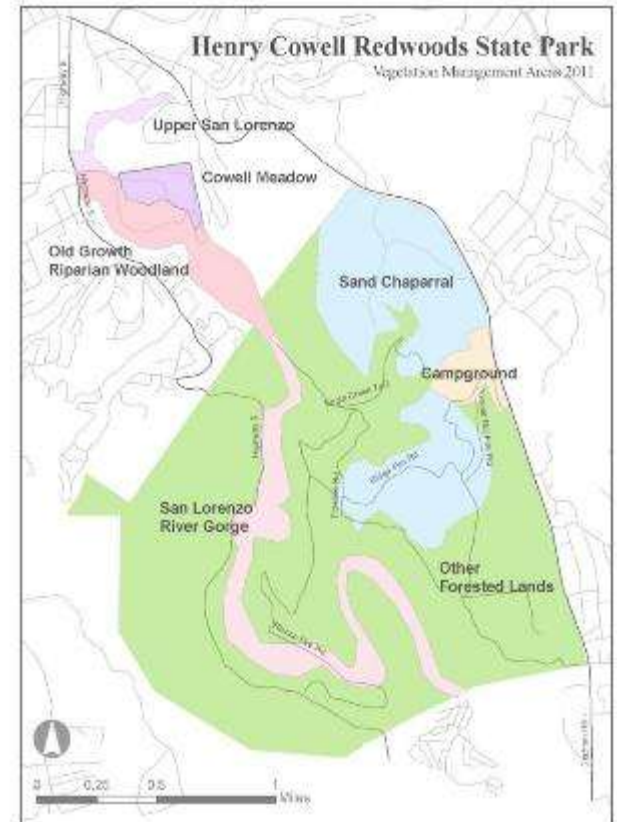
Weed Information Management Systems



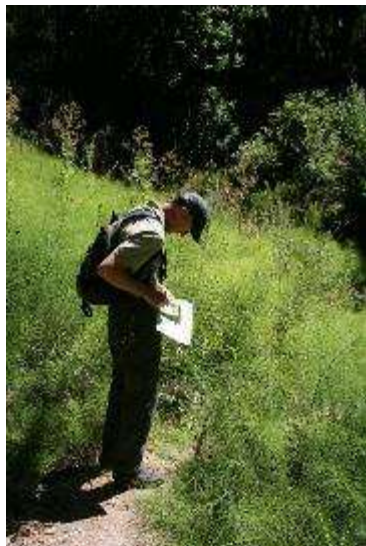
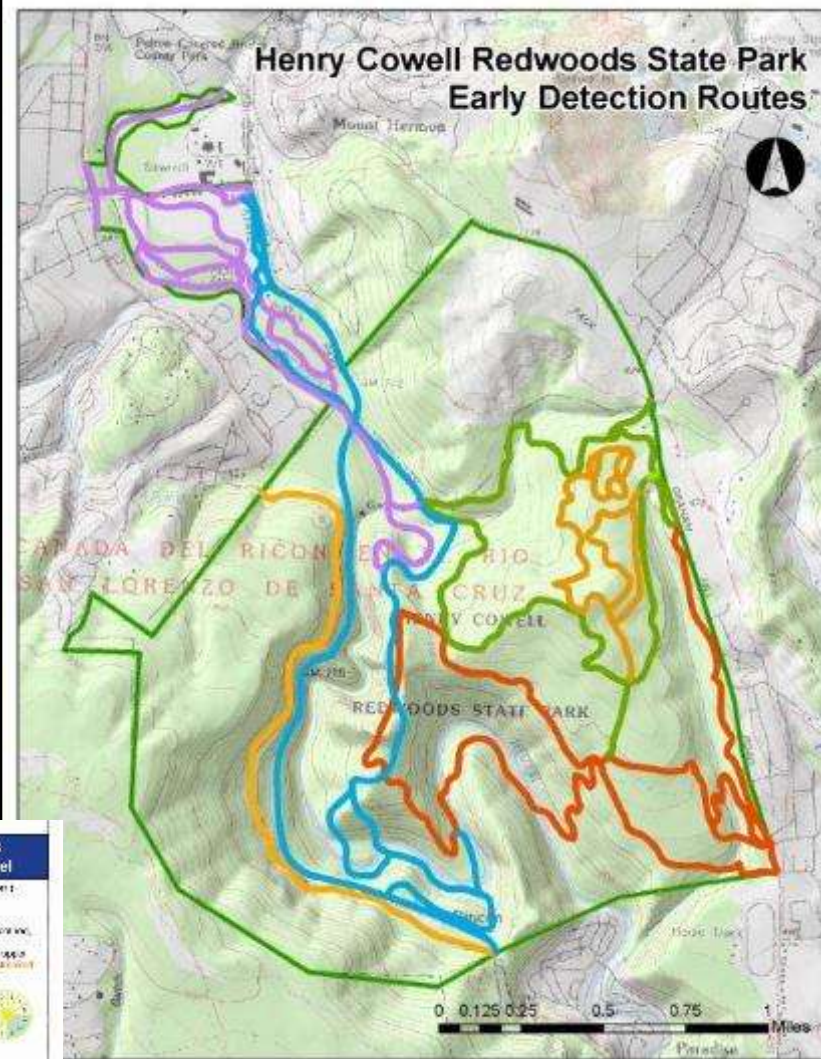
Vegetation Management Statements



- Vegetation Types**
- | | |
|------------------|----------------------------------|
| Developed Area | Grassland & Coastal Scrub Mosaic |
| Eucalyptus Stand | Mixed Chaparral |
| | Monterey Pine Stands |
| | Oak Woodland |

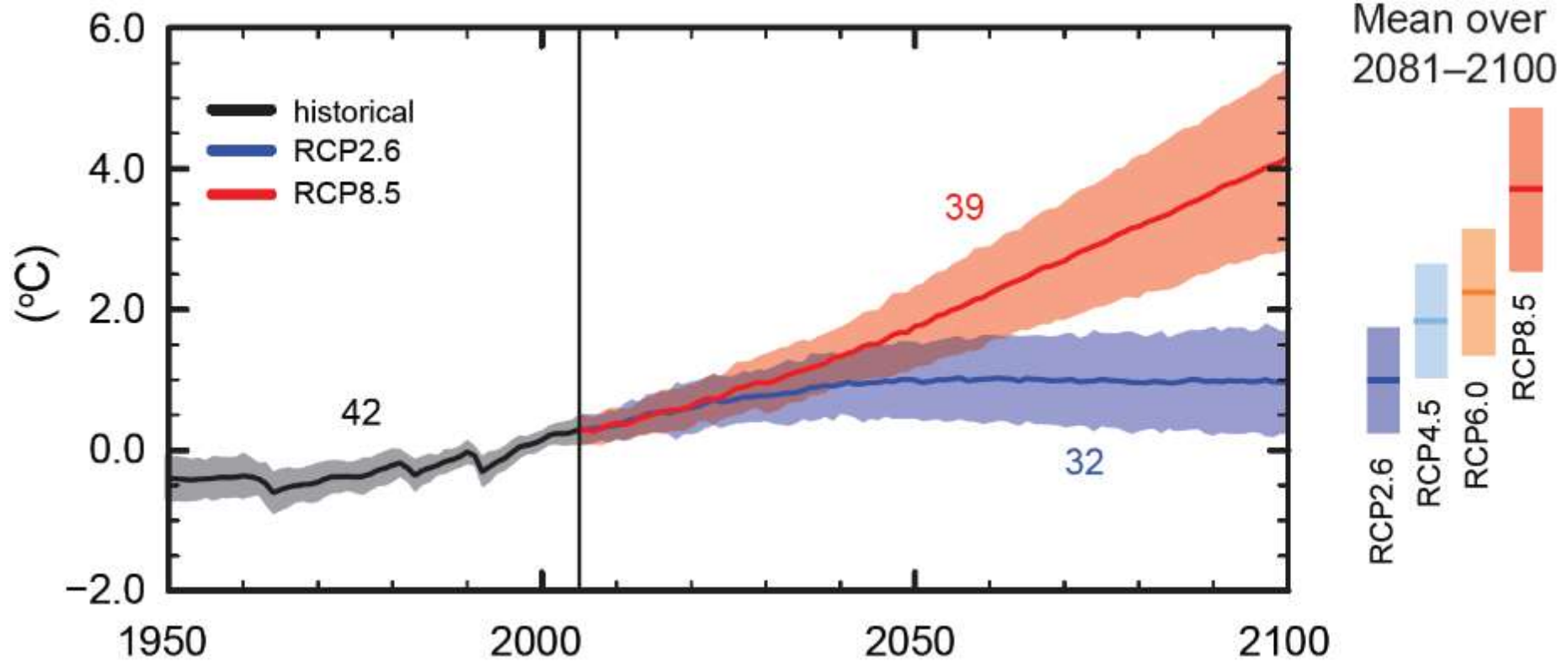


Early Detection & Rapid Response

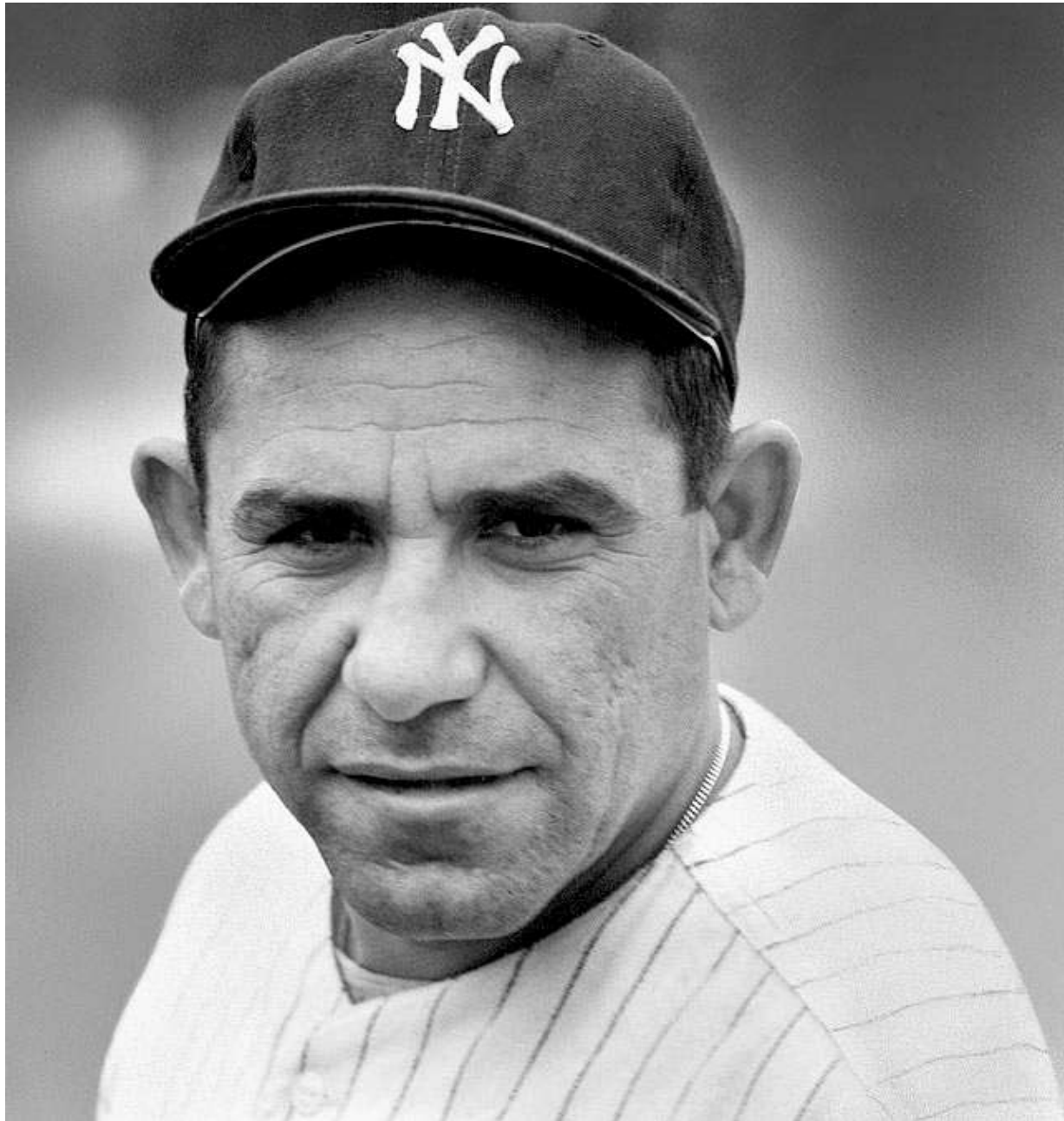


EXOTIC SHRUB Himalayan Blackberry (Rubus spectabilis)	EXOTIC SHRUB Red Sesbania (Lespedeza bicolor)	EXOTIC HERB Yellow Archangel (Lamium maculatum)
<p>Description</p> <ul style="list-style-type: none"> • Shrub or small tree to 12 ft tall • Leaves 5-10 cm long, 2-4 cm wide, serrated • Flowers white to pink • Berries black to purple • Spreads by rhizomes and runners <p>Bloom Period April-May</p> <p>Habitat Open areas, roadsides, fields</p> <p>Don't confuse with... California Blackberry (Rubus californicus)</p> 	<p>Description</p> <ul style="list-style-type: none"> • Shrub or small tree to 12 ft tall • Leaves 10-15 cm long, 1-2 cm wide, pinnate • Flowers red to orange • Spreads by rhizomes and runners <p>Bloom Period April-May</p> <p>Habitat Open areas, roadsides, fields</p> <p>Don't confuse with... Black Locust (Robinia pseudoacacia)</p> 	<p>Description</p> <ul style="list-style-type: none"> • Herbaceous perennial • Leaves 10-15 cm long, 5-10 cm wide, ovate • Flowers yellow • Spreads by rhizomes and runners <p>Bloom Period April-May</p> <p>Habitat Open areas, roadsides, fields</p> <p>Don't confuse with... Other mint plants (Lamium sp.)</p> 

Global average surface temperature change

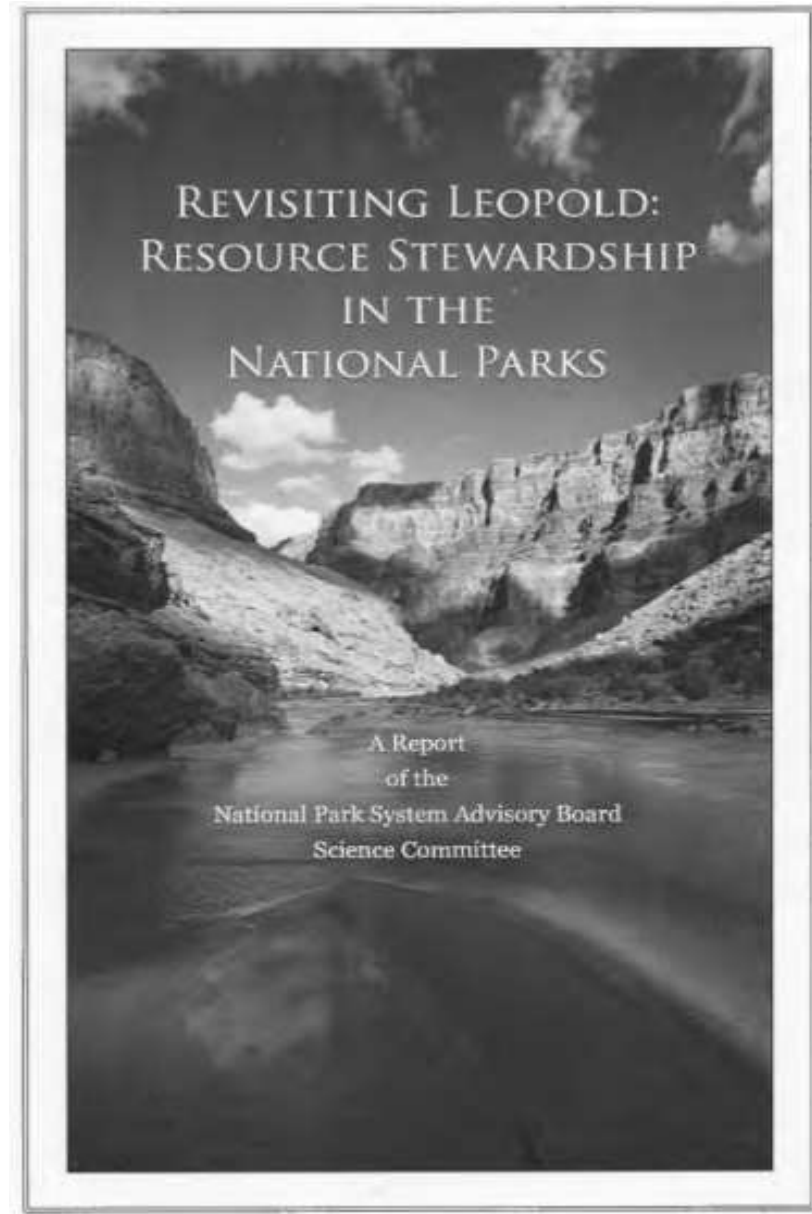


Source: IPCC 2013 AR 5 Working Group 1



National Park Service 2012

The overarching goal of NPS resource management should be to steward NPS resources for continuous change that is not yet fully understood, in order to preserve ecological integrity ...



Transformation Team Purpose and Objective

Transformation Team Strategic Goals

Develop Excellent Management Systems



Maintain High Quality Operations and Public Service



Create Meaningful Connections and Relevancy to People



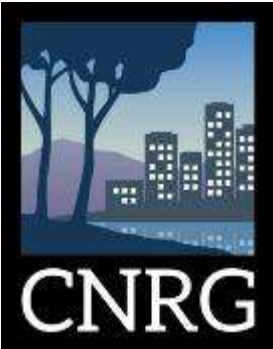
Protect and Enhance Natural and Cultural Resources



- Two year effort to strengthen the California state park system through a series of initiatives and project supporting the strategic goals.
- Effort emphasizes changed policies, procedures, guidelines and organizational structure that support an entrepreneurial, service-oriented, creative and collaborative culture.

Natural and Cultural Resources Committee

Natural Resources Advisory Workgroup



Natural and Cultural Resources Vision and Strategic Areas of Focus



Vision

California State Parks are entrusted with globally, nationally, and regionally significant natural and cultural resources for the enjoyment, inspiration and education of the public. We will ensure the long-term and sustainable stewardship of these representative and outstanding examples of California's heritage through transformative approaches, best practices and effective partnerships.

1



Stewardship at Scale

Play a leadership role in resource protection at landscape and ecosystem levels as a cornerstone landowner and convener of protection, restoration and management actions.

2



Resilient and Sustainable Resources

Promote long term sustainability by building climate change considerations into all that we do to manage our resources over the long term.

3



State-of-the-art Management

Use the latest science-based approaches and best practices to manage our natural and cultural resources consistent with our mandates and mission.

4



Innovative Collaborations

Promote new types of collective engagement to foster innovation, create a shared commitment to stewardship, and harness complimentary skills, capacities, and support.