

A close-up photograph of a flowering branch, likely a shrub or small tree. The flowers are small, five-petaled, and range in color from pale pink to white. They are clustered together on thin, woody stems. The background is softly blurred, showing more of the plant and some green foliage.

**Three decades of effort: undoing
a mistaken policy of introducing
a weedy non-native as forage.**

Denis M. Kearns, botanist

BLM, Bakersfield Field Office

OLD PARADIGM: “Range Improvement”



A wide-angle photograph of a vast, green, rolling landscape, likely a prairie or steppe. The foreground is filled with dark, jagged rocks and patches of green grass and small white flowers. The middle ground is a vast, flat expanse of green grass that stretches towards the horizon. In the background, there are low, rolling mountains under a bright, slightly hazy sky. The overall scene is a natural, open landscape.

OLD PARADIGM: “Range Improvement”

1. “Develop” springs to supply water for cattle



OLD PARADIGM: “Range Improvement”

- 1. “Develop” springs to supply water for cattle**
- 2. Eradicate “worthless” native species**



OLD PARADIGM: “Range Improvement”

- 1. “Develop” springs to supply water for cattle**
- 2. Eradicate “worthless” native species**
- 3. Introduce non-native plants as forage**



Damascus saltwort (*Salsola damascena*)

a.k.a. wormleaf saltwort (*Salsola vermiculata*)



**Crest of Temblor Ridge
site of original introduction in 1969-1970**

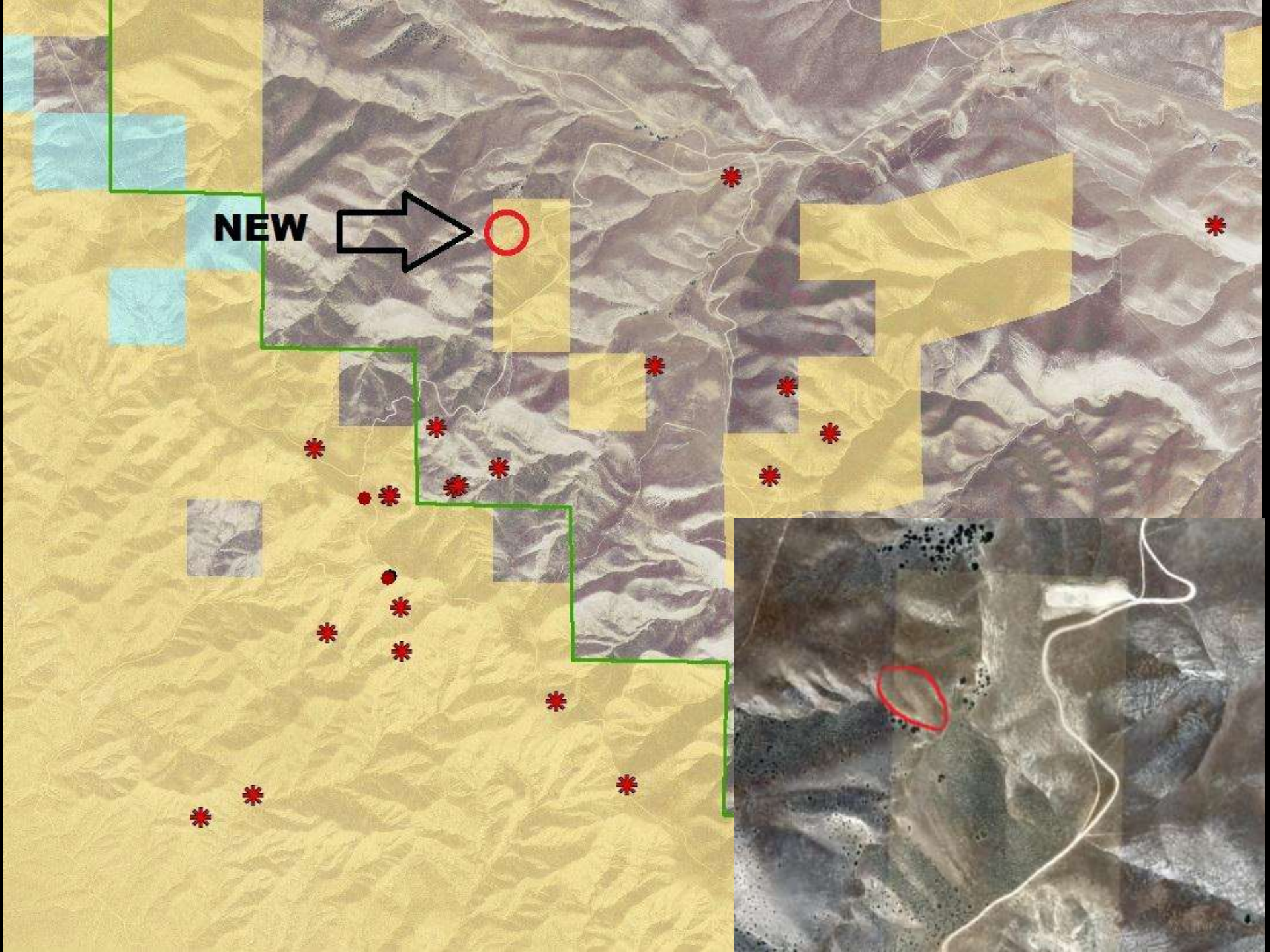




**San Joaquin
Valley**

**Carrizo Plain
National Monument**





NEW



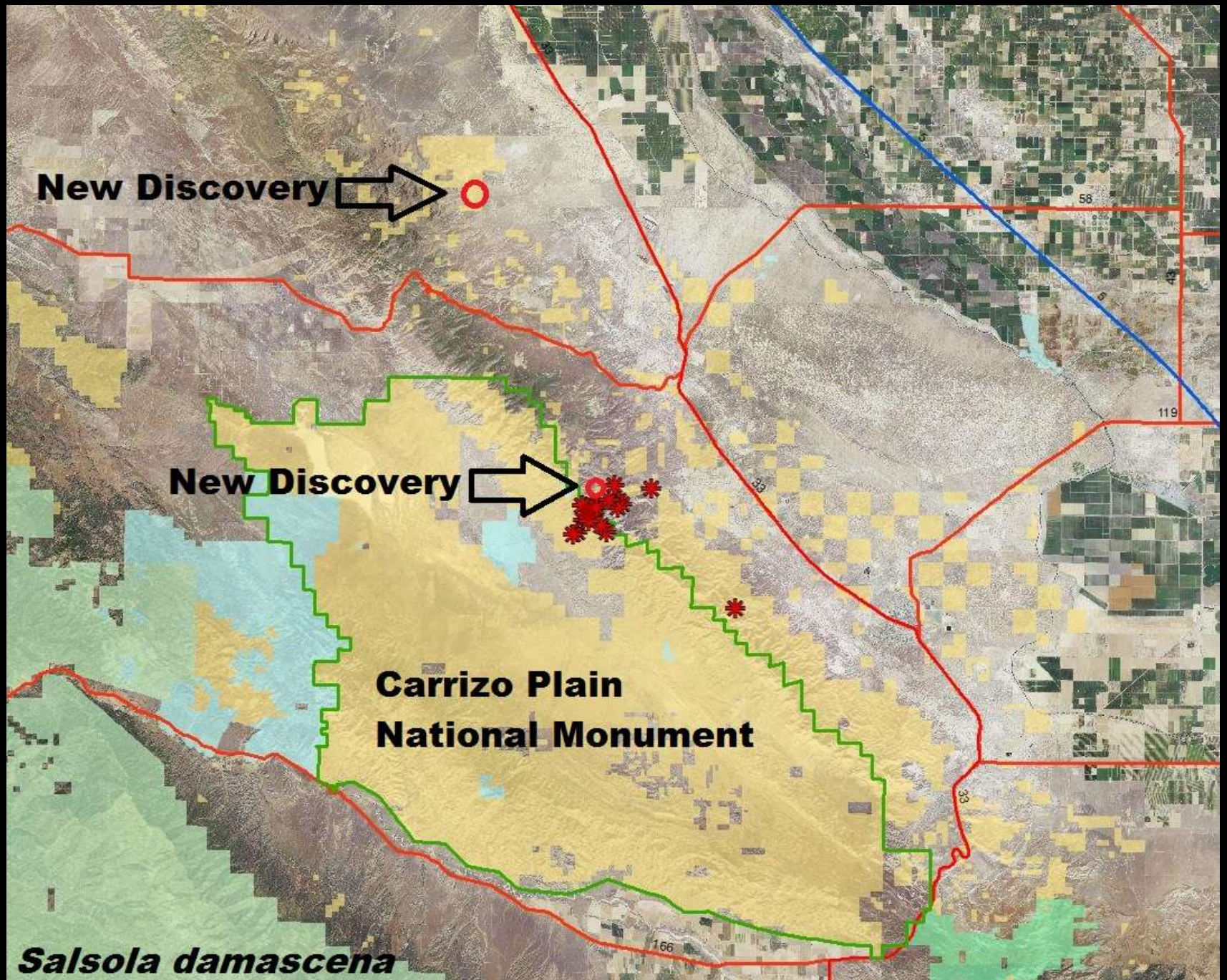


New Discovery → ○

New Discovery → *

**Carrizo Plain
National Monument**

Salsola damascena









Salsola damascena (Damascus saltwort)



Atriplex polycarpa (common saltbush)





