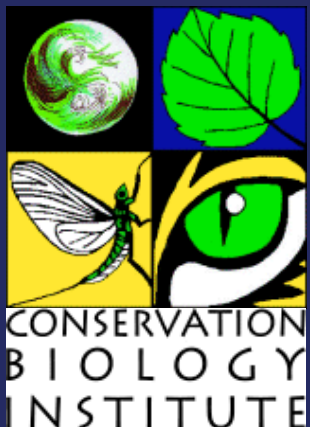


Invasive Plant Management Across the San Diego NCCPs



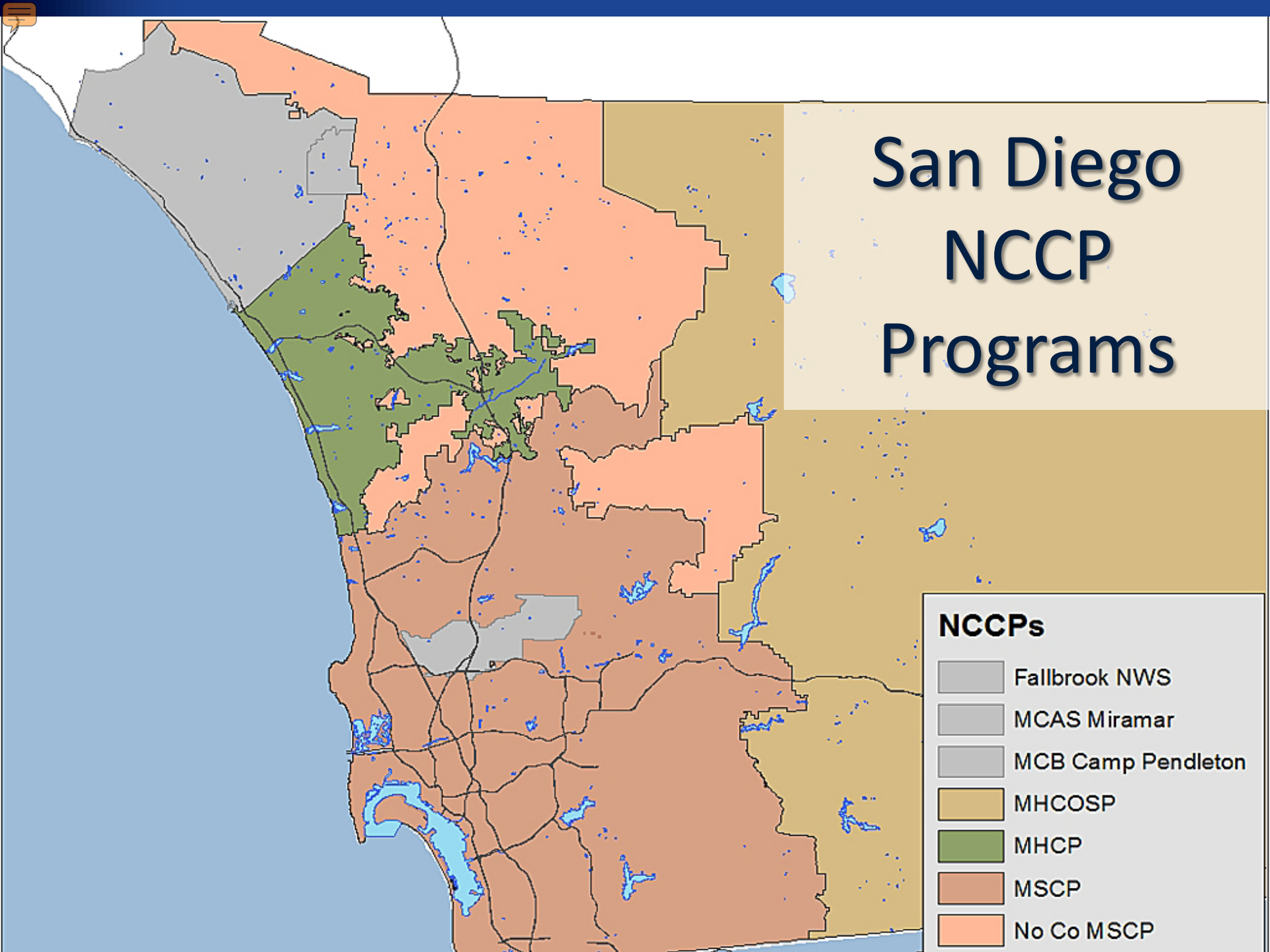
Patricia Gordon-Reedy
HCP/NCCP Conference, October 29, 2015



San Diego NCCP Programs

NCCPs

- Fallbrook NWS
- MCAS Miramar
- MCB Camp Pendleton
- MHCOSP
- MHCP
- MSCP
- No Co MSCP



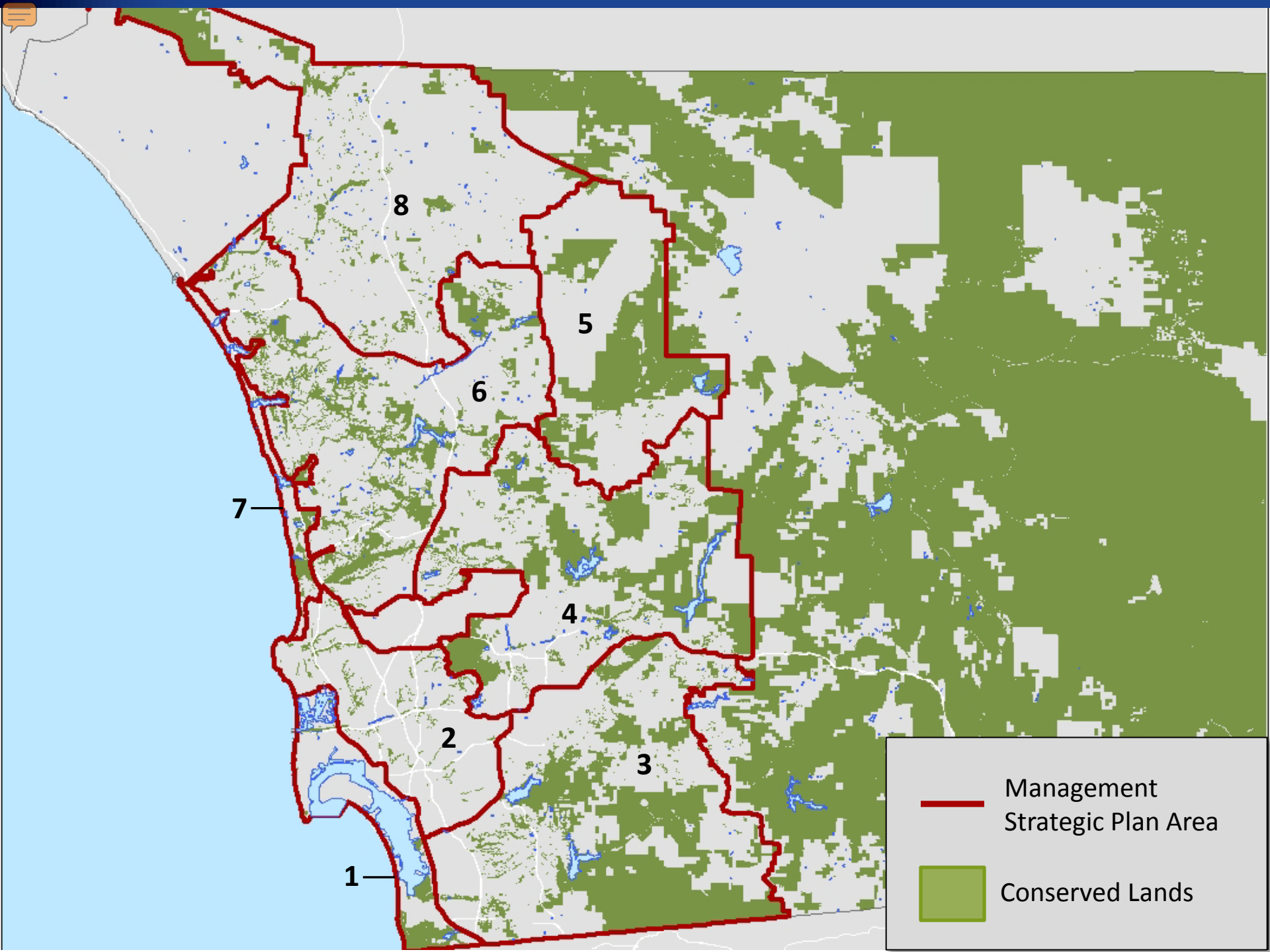






Photo: C. Fahey 2007



Invasive Plant Strategic Plan

Are we prioritizing the right species?

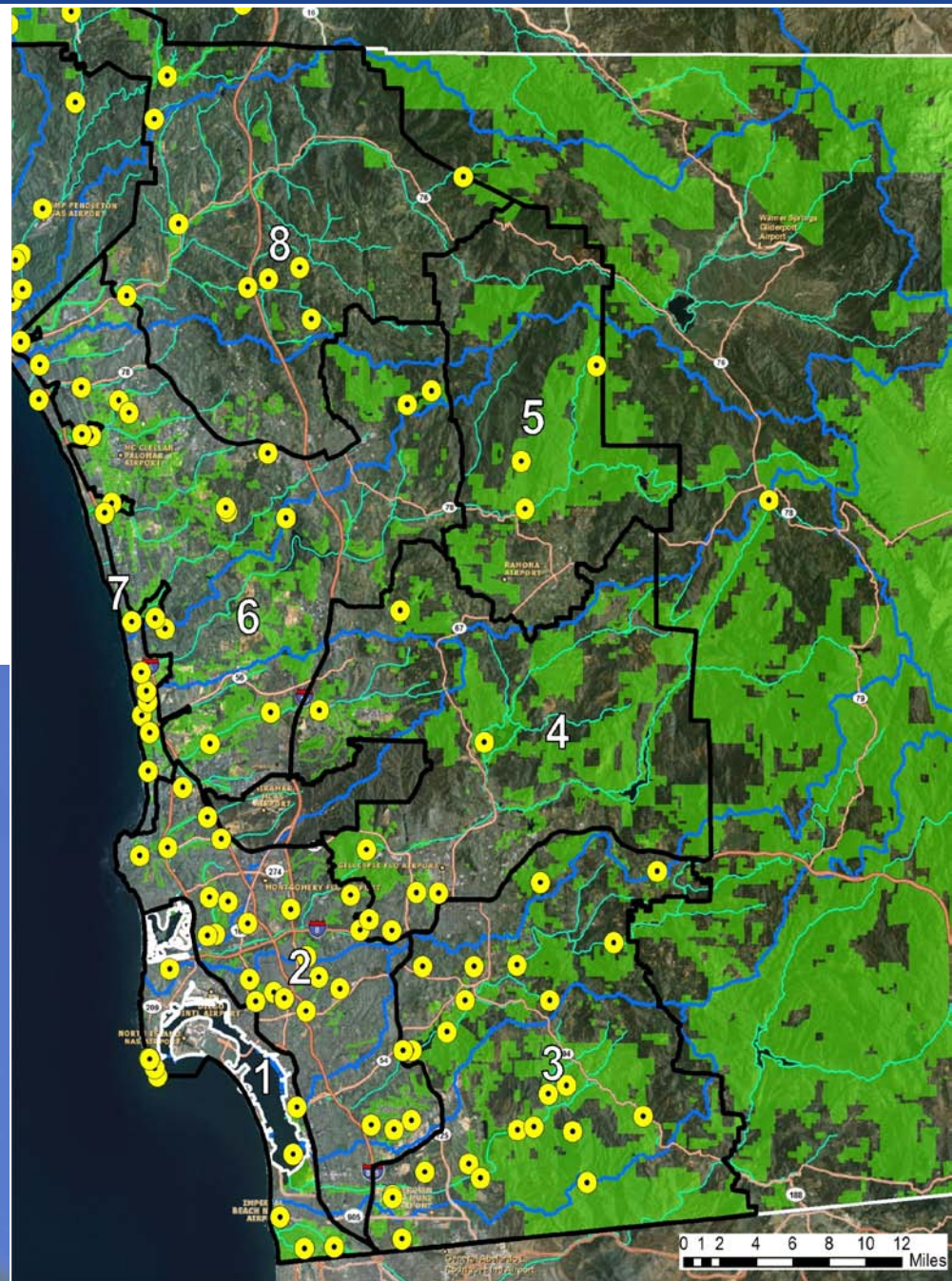
Objectives:

- Framework for long-term management
- Priorities for near-term implementation
- Science-based process for decision-making



Integrated Spatial Dataset

Compiling species distributions



**Foeniculum vulgare
(Fennel)**



Population



Management unit



Conserved Lands



Watershed

Regional Plant Assessments

1 Ecological Impacts

- Abiotic impacts
- Flora
- Fauna
- Vegetation (structure, composition)

2 Invasiveness

- Invasive potential
- Rate of spread
- Reproduction
- Dispersal

3 Distribution/ Abundance

- Ecotypes
- Vegetation community

www.sdmmp.com

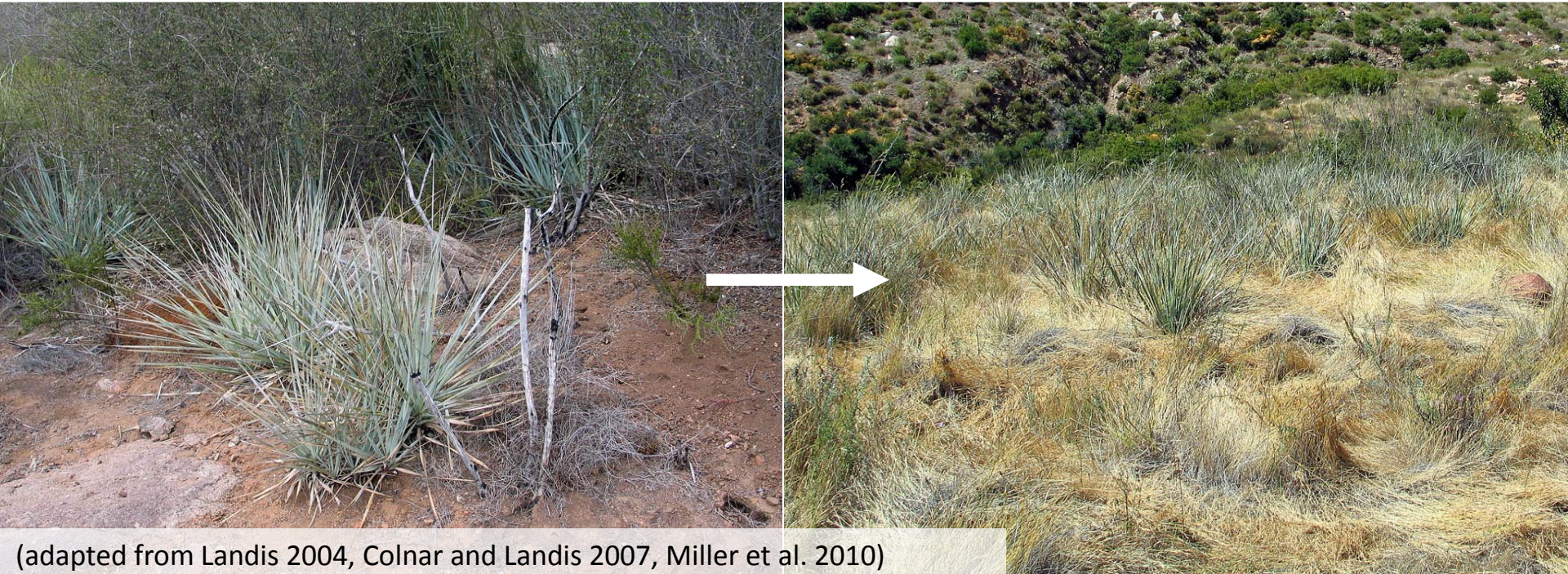
58% - priority invasives ranked differently at regional vs state level

High Impact Species



Relative Risk Assessment

- Co-occurrence + effect (consequence)
 - resource allocation, vegetation structure, native recruitment, stand density



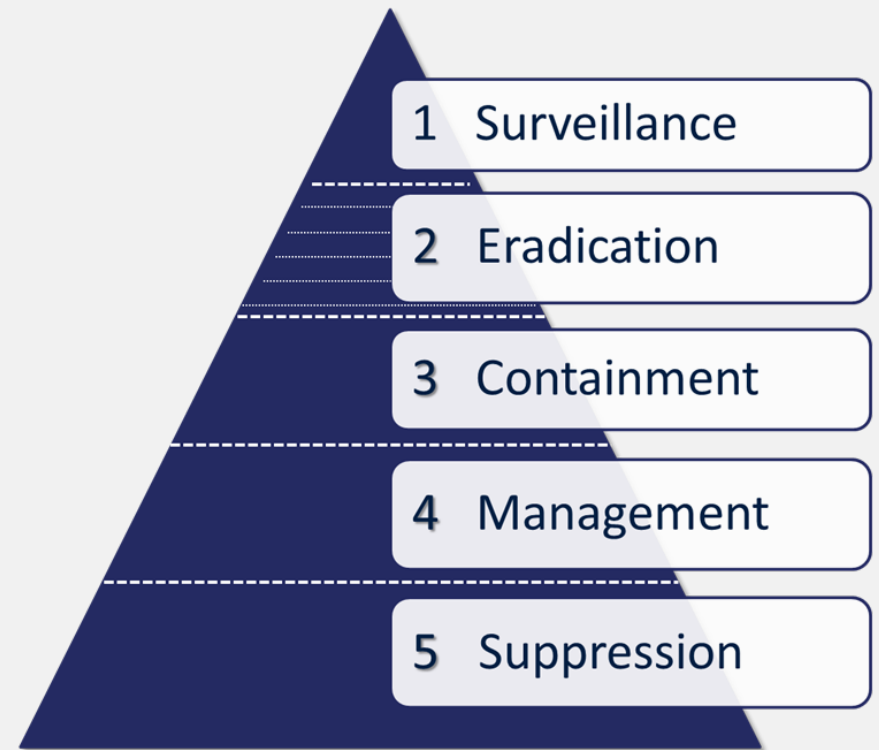
(adapted from Landis 2004, Colnar and Landis 2007, Miller et al. 2010)

Species Prioritization

- Score + feasibility
- Responsibilities

Responsibility
MLs 1-2: Regional
ML 3: Regional, Local
MLs 4-5: Local

Management Levels



Abundance/Manageability

Relationship to Strategic Plans

Cost-effective management and monitoring

MSP:

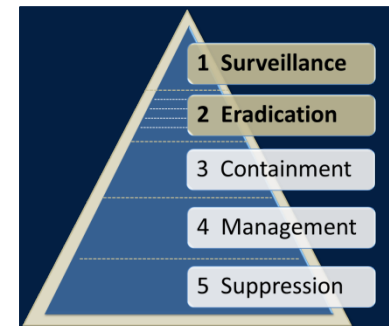
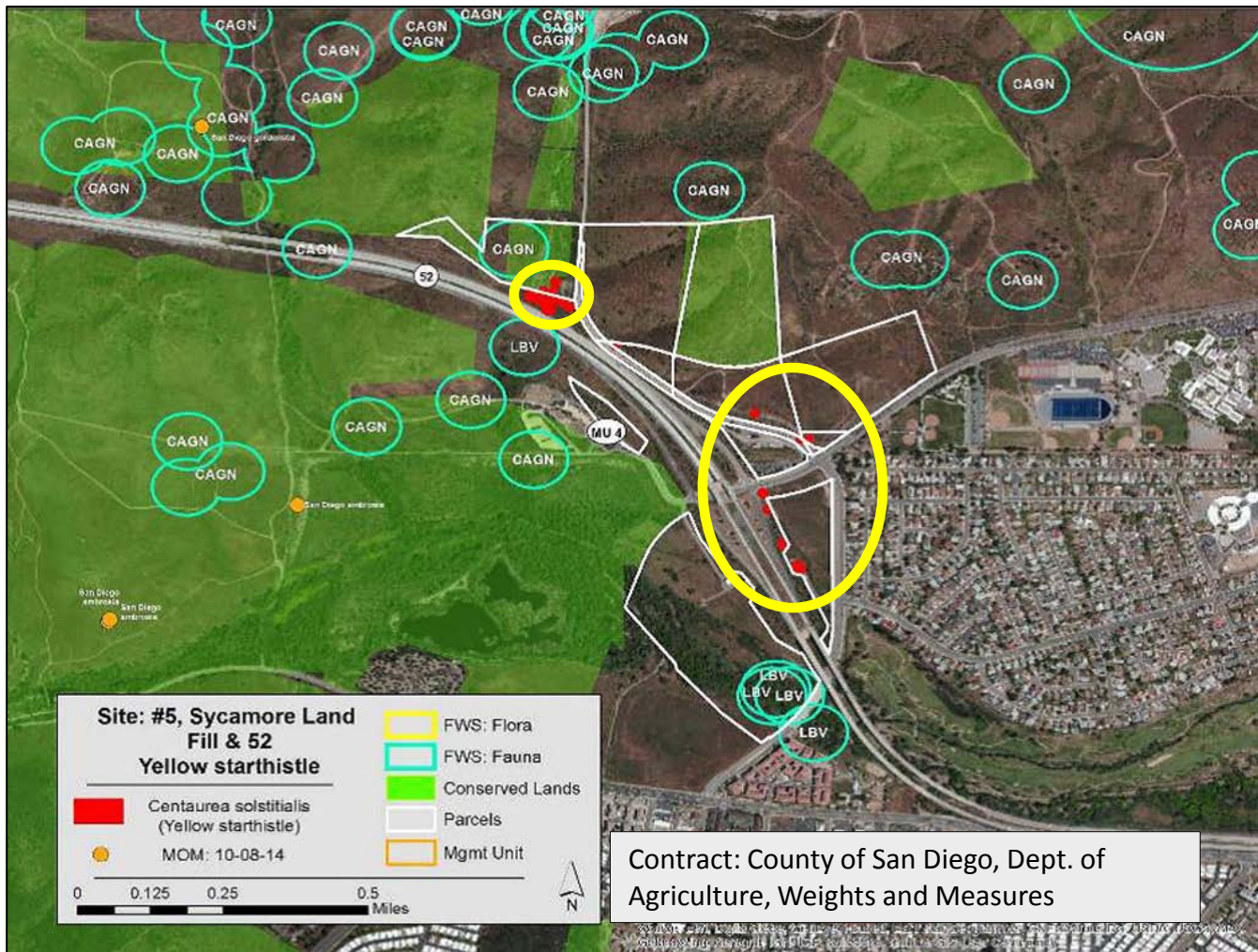
- Identifies goals and objectives
- Establishes priorities & locations
- Provides timelines

High Priority Invasives +
MSP Priority Resources



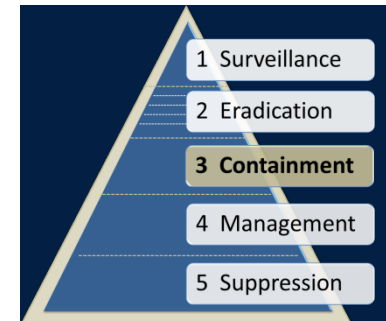
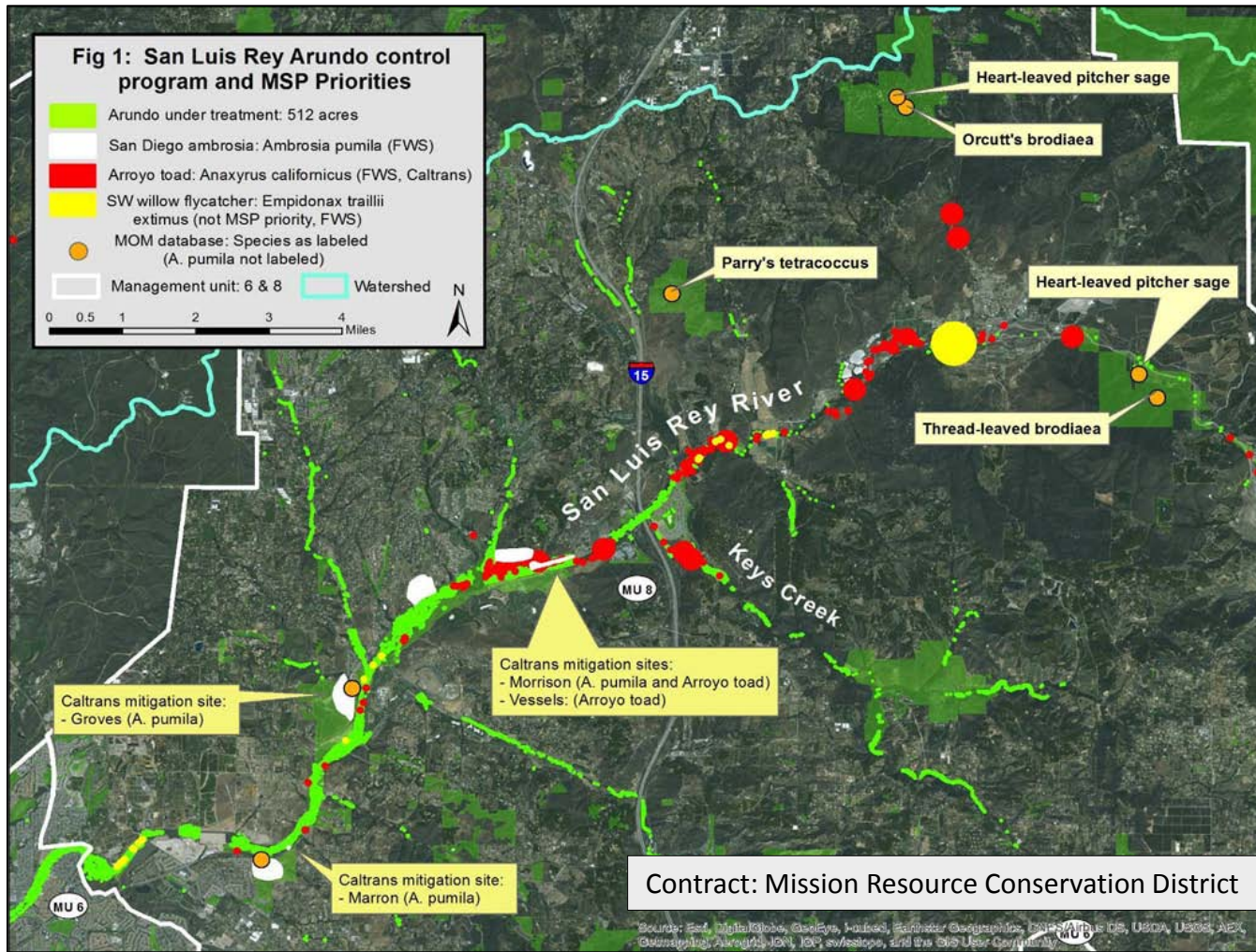
Early Detection Rapid Response

SANDAG EMP Funding (2015) + other funding sources



Arundo Management

SANDAG EMP Funding (2008, 2013, 2015)



South County Grasslands

SANDAG EMP Funding (2011, 2013, 2015)



- 1 Surveillance
- 2 Eradication
- 3 Containment
- 4 Management
- 5 Suppression



Managing Invasives within NCCPs

1. Develop a centralized invasives control program that is aligned with NCCP priorities
2. Prioritize invasives regionally, on a 5-year cycle, with annual review
3. Develop BMPs for application at the landscape level

Prescribed Burn

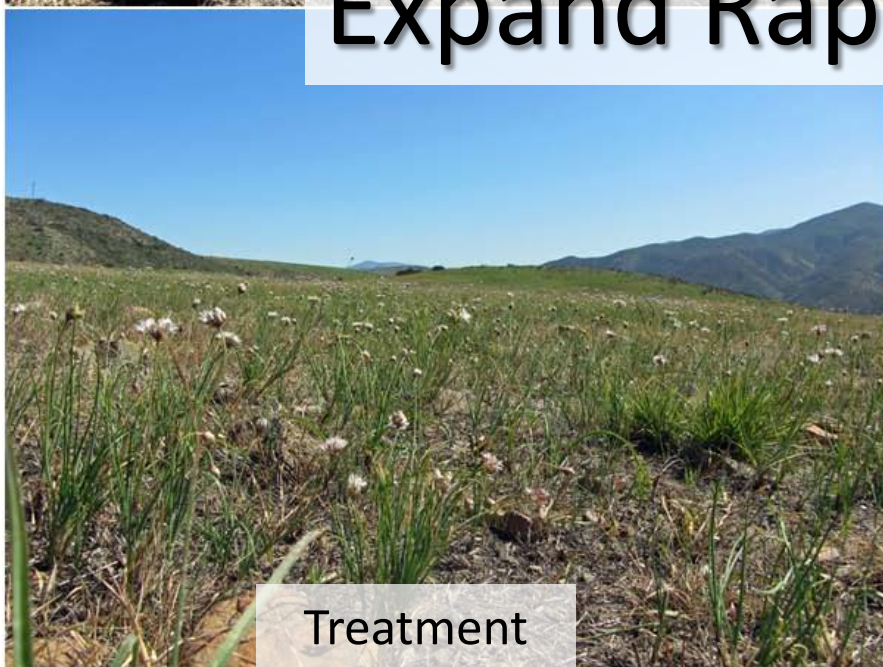


No Treatment



Expand Rapid Response

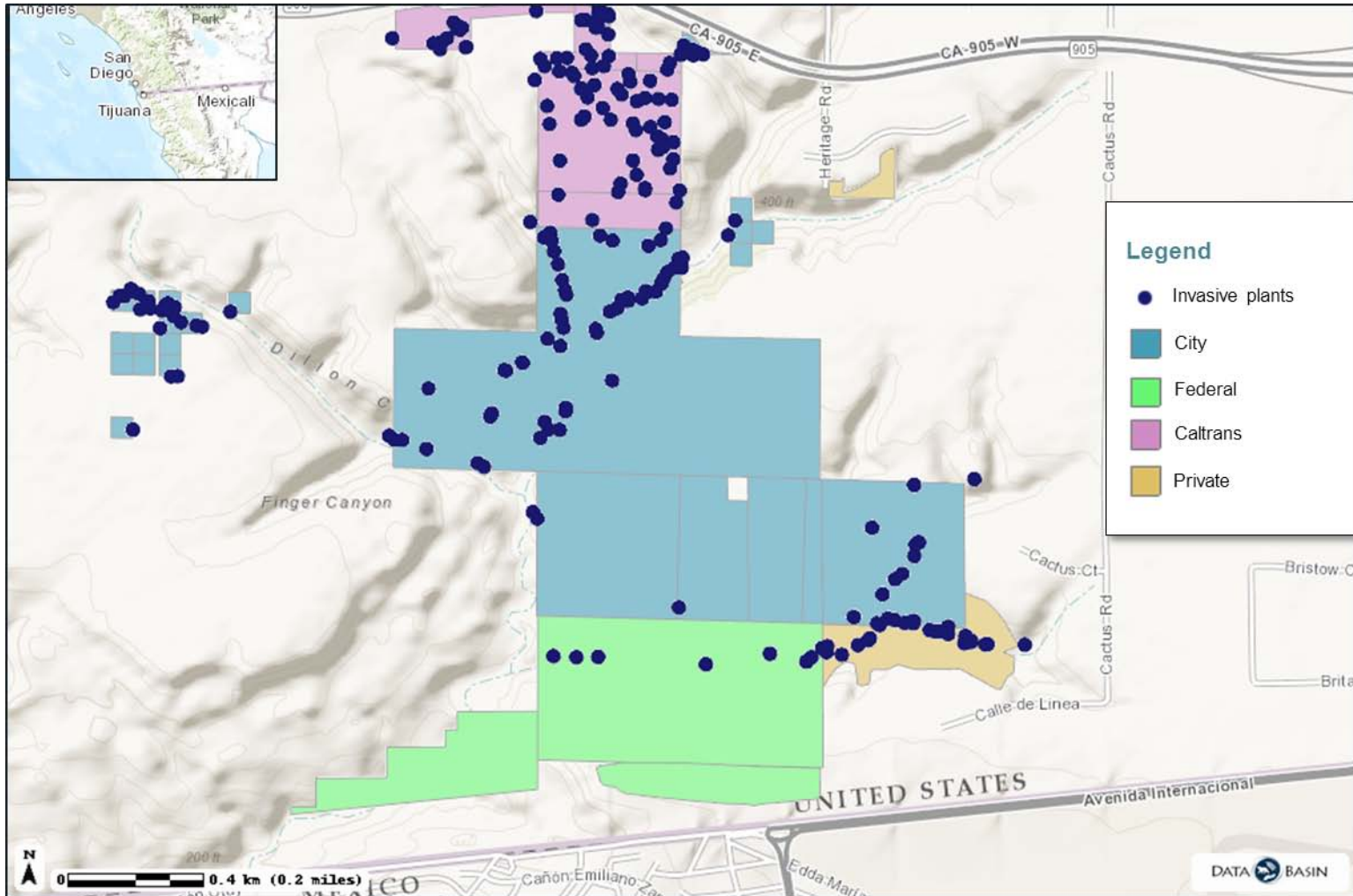
Treatment



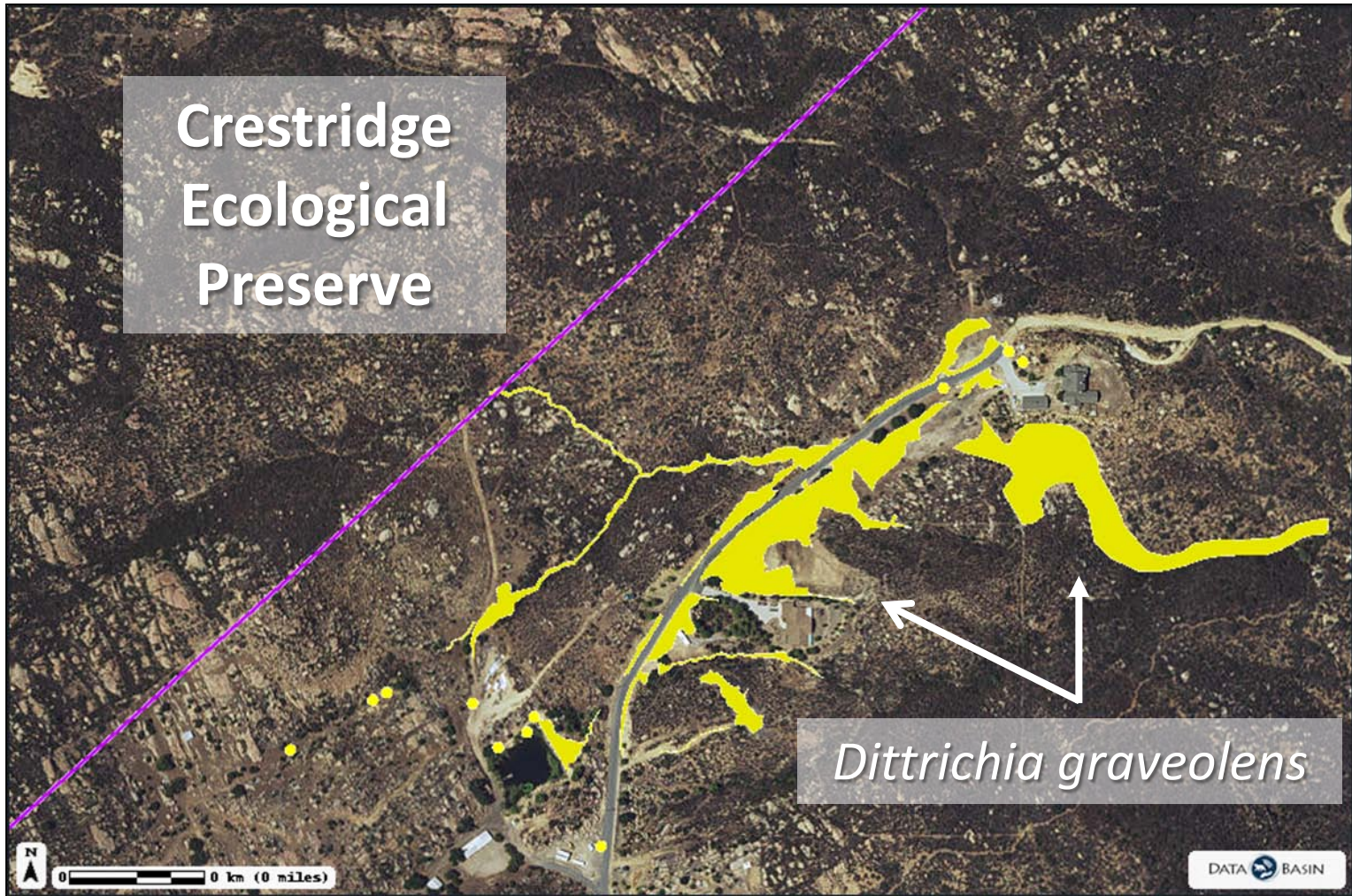
Otay Tarplant (FT/SE)



Treat Across Preserve Boundaries



Treat Beyond Preserve Boundaries



Acknowledgements

- San Diego Association of Governments (SANDAG)
- San Diego Management and Monitoring Program (SDMMP)
- California Invasive Plant Council (Cal-IPC)
- Dendra, Inc. (Jason Giessow)
- San Diego County Land Managers

