


2014 Update





Work on the ground!
Strategic early eradication
Funding treatment in 7 counties
Recorded in Calflora/CalWeedMapper

**Treating Canada thistle in the
Carson-Iceberg Wilderness.
Protecting Sierra meadows is
active climate adaptation.**

BETA

Regional Strategy

Cal-IPC is working with regional partners to set landscape-level strategies, secure funding implementation, and build a coordinated approach statewide. Click on the map to see regional efforts underway!

REGION UPDATES

Northwest

See [page](#).
Eradication Workplan is completed and partners have used it to apply for NFWF's PTI grant for 5 species identified in the Strategic Plan. See the ID presentation on their **26 priority species**.

North Central

See [page](#).
Partners used species identified in the Strategic Plan to apply for NFWF's PTI grant. A table of funding opportunities has been compiled and a presentation on priority species is under development.

Bay Area

See [page](#).
Cal-IPC has absorbed BAEDN and is furthering this Bay Area EDRR effort.



Click on a region within the map to see strategic plan details for that region

Central Coast

See [page](#).
See the ID presentation on their **19 priority species** given by Bruce Delgado at local WMA meetings. WMA chairs are directing searches to verify infestation sizes and locations identified in their Eradication Workplan.

South Central Coast

See [page](#).
WMA chairs are coordinating to verify infestation sizes and locations in order to draft an Eradication Workplan. Meeting #2 to occur in Winter 2014.

North Sierra

See [page](#).
First meeting to draft Strategic Plan will take place in September 2013 in Truckee.

Central Sierra

See [page](#).
Participants prioritized 10 eradication and 15 surveillance targets. The NFWF PTI proposal was funded and partners are working to eradicate three top priority species.

CalWeedMapper

[home](#) | [maps](#) | [regions](#) | [how to](#) | [spatial data](#) | [plant profiles](#) | [about](#) | [contact](#)

BETA

basic | **advanced**

SEARCH BY COMMON NAME

SEARCH BY SCIENTIFIC NAME

indicates suitable range map is available in advanced mode



Photo courtesy of David Chang

Acroptilon repens (Russian knapweed)

Cal-IPC Rating: **Moderate**
Other Ratings: CDFA B, BAEDN

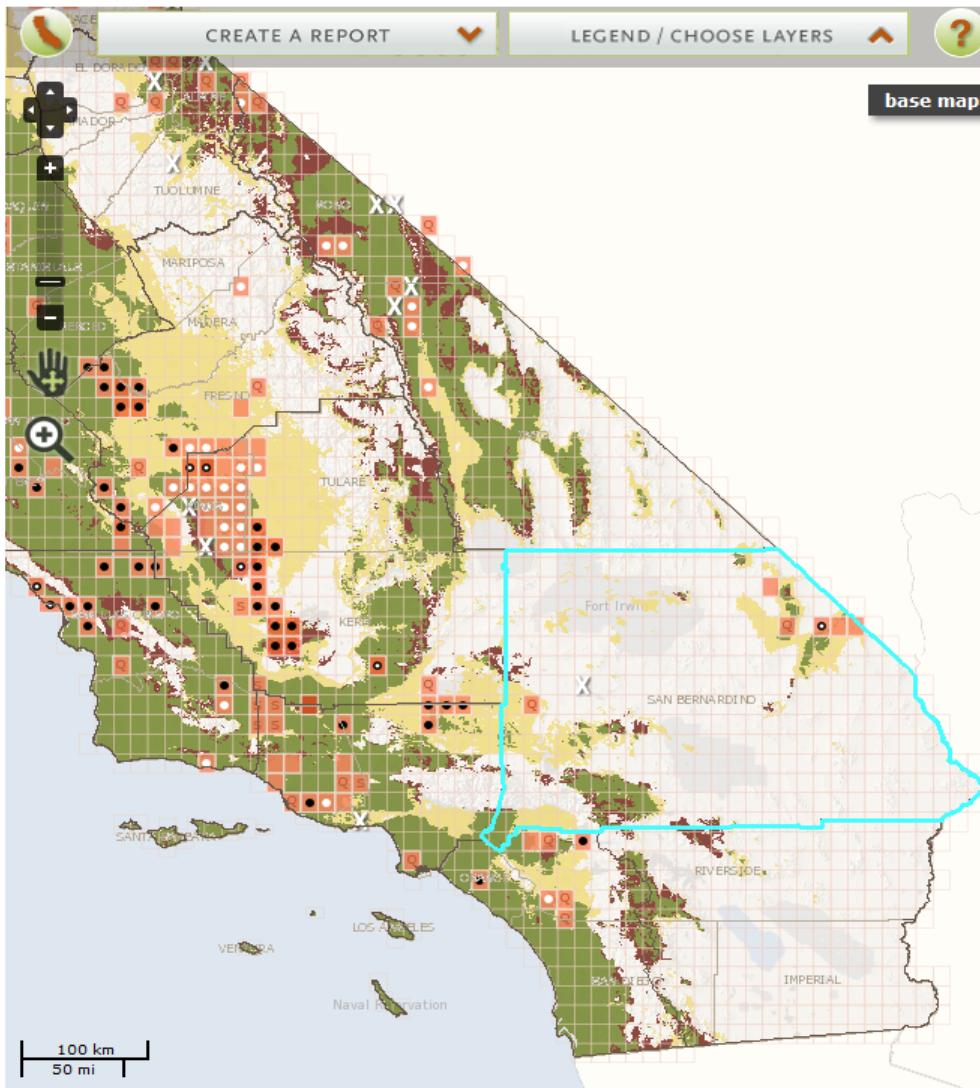
species description

Get Species Map Report

Cal-IPC Draft Planning Regions
SELECT REGION

Desert Management Opportunities

- Surveillance: ? 34 species >>>
- Eradication: ? 14 species >>>
- Containment: ? 111 species >>>
- Managed: ? 28 species >>>



CREATE A REPORT

LEGEND / CHOOSE LAYERS

base map

EXPERT KNOWLEDGE BY QUAD

Abundance

- Low
- Medium
- High

Trend

- Spreading
- Managed, spreading
- Managed, decreasing
- Eradicated

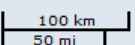
Verification Needed

- Verify Quad
- Verify Species

Adjust transparency:

SUITABLE RANGE

- 2010
- 2050
- Change 2010 - 2050
- Suitable range
- Expanded range
- Reduced range



Adding a new assessment

Organization: Independent Project: Simple data collection

Access by others: published History: Earliest record: # xr178521

CANCEL SAVE

Shape: none Point Location: [blue dot]

SIMPLE DATA COLLECTION

Scientific Name *: Centaurea calcitrapa Common Name:

Observer *: Doug Johnson Observation Date *: 2014-10-4

Notes:

Location Description: Rangeland in the vicinity of Blue Canyon.

Number of Plants: choose

Photos: 0 Add a photo

Management Status: under management / treatment

Elevation: 1481 meters lookup elevation

Natural Status: wild

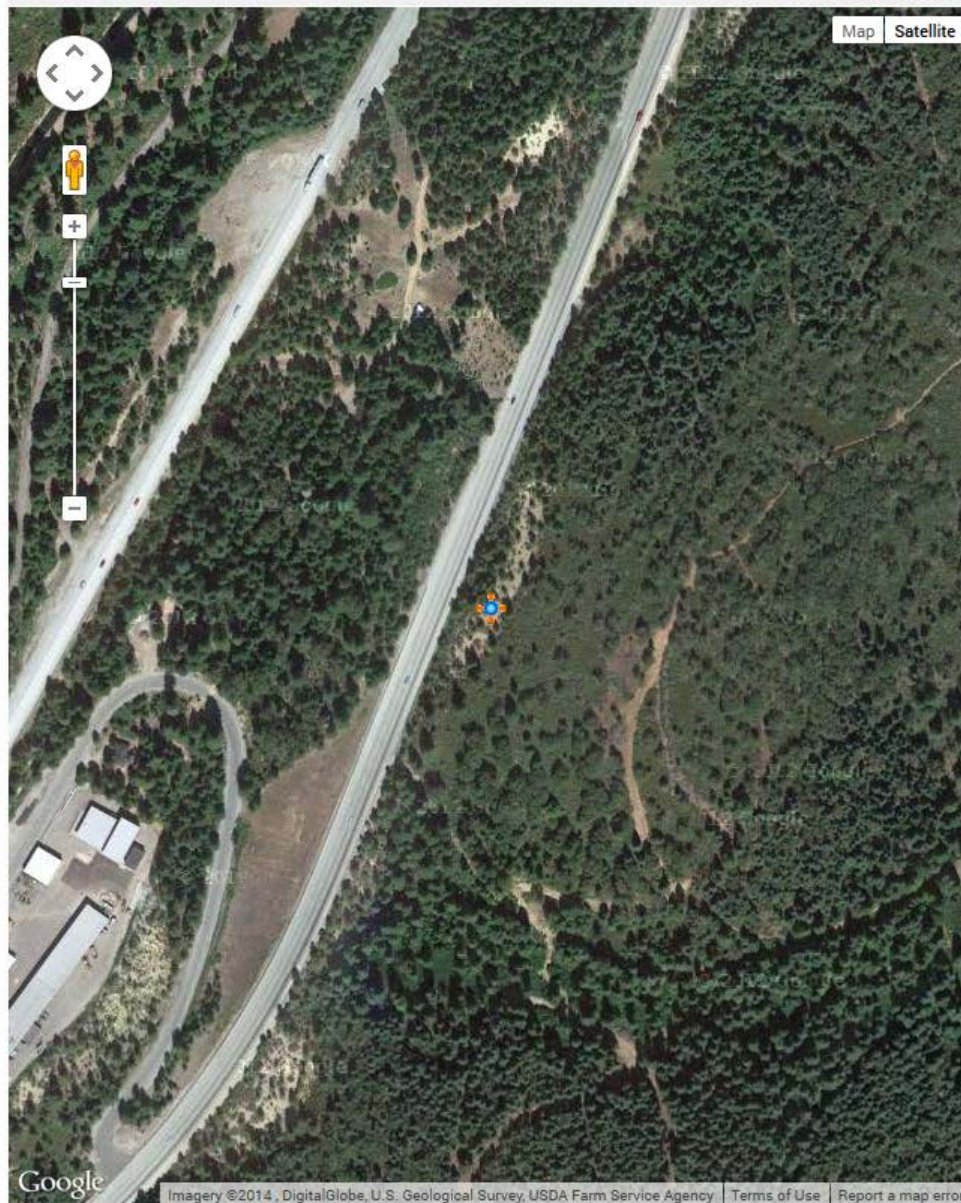
Collection:

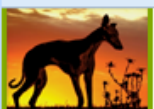
Plant Identification: recognized from prior determination

Location Accuracy: error radius (meters) square meters

Map Layers

Map Satellite





WHIPPET

BETA

BETA

WHIPPET helps land managers prioritize invasive plant populations:

- ✓ **Ranks** based on impacts, invasiveness, and feasibility of control.
- ✓ **Integrates** species data with spatial analysis.
- ✓ **Allows** users to select species and area to analyze.
- ✓ **Uses** data from the Cal-IPC Inventory, Calflora, and other sources.

Start by logging in with your Calflora e-mail address and password.

Calflora e-mail address

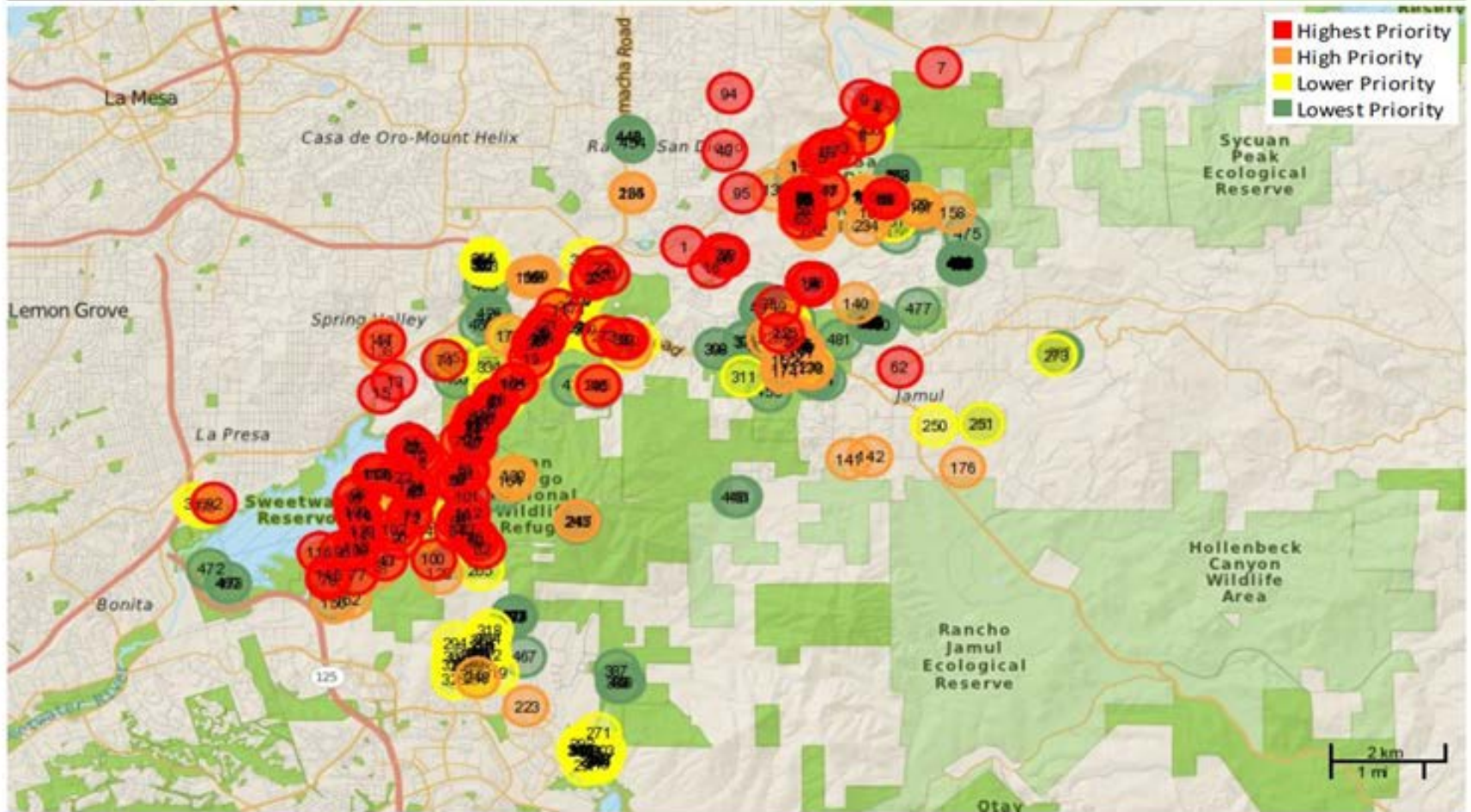
Calflora password

- [Log In to WHIPPET](#)
- [Calflora Sign Up](#)
- [Read User Guide](#)





SDNWR less abundant Prioritized Eradication Targets







Project planning on 6 military bases



State Parks ID Guides to support EDRR

Weed Alert! Medusahead



5386313

UGA1459330

53863


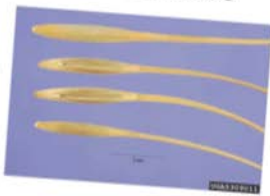

Copyright © 2007 The Regents of the University of California. All rights reserved.

Medusahead

(*Elymus caput-medusae*)

Mature Size

Description




- Up to 2 ft. annual grass with seedheads that look like "Medusa's head"
- Seedheads are spike-like and stay on the stem for a long time
- 1-3 in. seed bristles are straight when green and twist as they dry, becoming wavy
- Short, stiff, straight bristles remain on stems after long wavy-bristled seeds fall to the ground
- Leaf sheath is smooth, while blades may be smooth or slightly hairy
- Yellowish-green dense stands are highly visible after other annual grasses die
- Reproduce by seed
- Spread by wildlife, waterfowl, livestock
- Native to the Mediterranean region

Bloom Period

Apr - Jul

Habitat

Scrub, chaparral, coastal regions, riparian areas,



2-minute Removal

Image credits: Front top and bottom: Joseph M. DiTomaso, University of California - Davis, Bugwood.org. Front center and back bottom: Steve Dewey, Utah State University, Bugwood.org. Back top: Steve Hurst, USDA NRCS PLANTS Database, Bugwood.org; icons by Tim Hvland

WMA funding

Assembly Bill No. 2402

CHAPTER 271

An act to amend Sections 7270, 7271, 7272.5, and 7273 of the Food and Agricultural Code, relating to noxious weed management.

[Approved by Governor August 22, 2014. Filed with
Secretary of State August 22, 2014.]

LEGISLATIVE COUNSEL'S DIGEST

AB 2402, Buchanan. Noxious weed management.
Under existing law, the Department of Food and Agriculture is designated as the lead department in noxious weed management, and requires the department, in cooperation with the Secretary of the Natural Resources Agency, to implement provisions relating to noxious weed management. Existing law creates the Noxious Weed Management Account in the Department of Food and Agriculture Fund, and provides for the allocation of monies for specified purposes, including control and expenses of carrying out

NAIPC developing on an ASTM Standard for listing invasive plants



About Us

Meetings and News

Chapters

State Councils

CWMAs/CISMAs

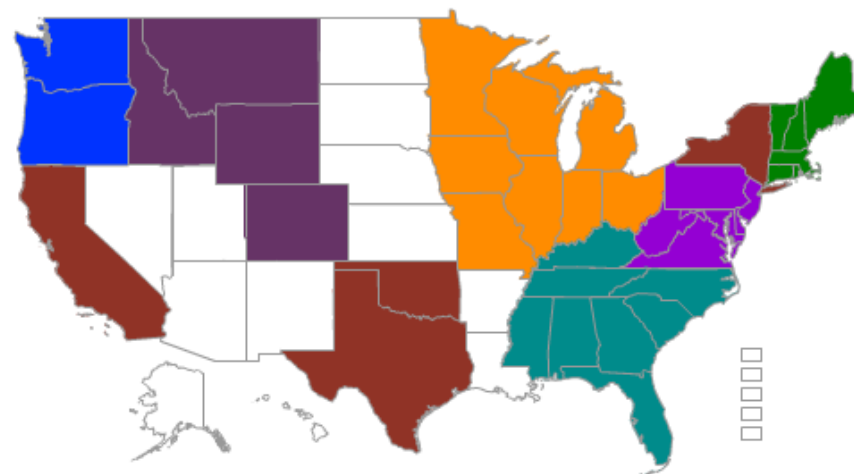
Links

Promoting effective management of invasive plants in natural areas and wildlands.

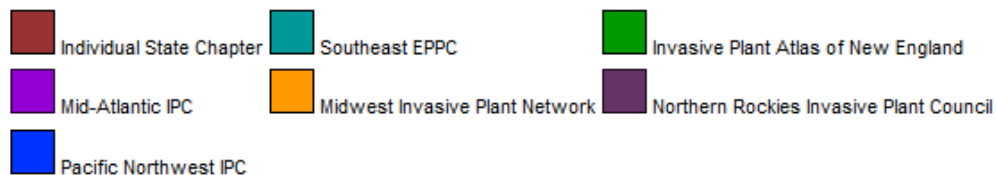
The National Association of Exotic Pest Plant Councils is a coalition of state and regional Exotic Pest Plant Councils (EPPCs) and Invasive Plant Councils (IPCs) representing professional natural resource managers, scientists and others with an interest in invasive plant management.

Through this website, NAEPPC also serves as a contact hub for:

- Multi-agency state invasive species councils;
- Cooperative Weed Management Areas (CWMAs) and Cooperative Invasive Species Management Areas (CISMAs);
- Other partnerships based on collaborative management of invasive plants.



Save as JPG



Best Management Practices for Wildland Stewardship



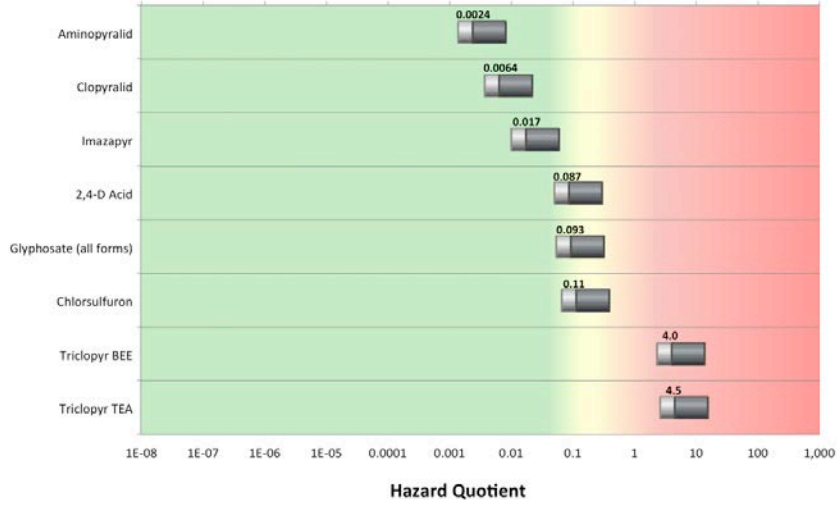
Protecting Wildlife When Using Herbicides for Invasive Plant Management

California Invasive Plant Council & Pesticide Research Institute

Review from:
toxics nonprofits
herbicide pros

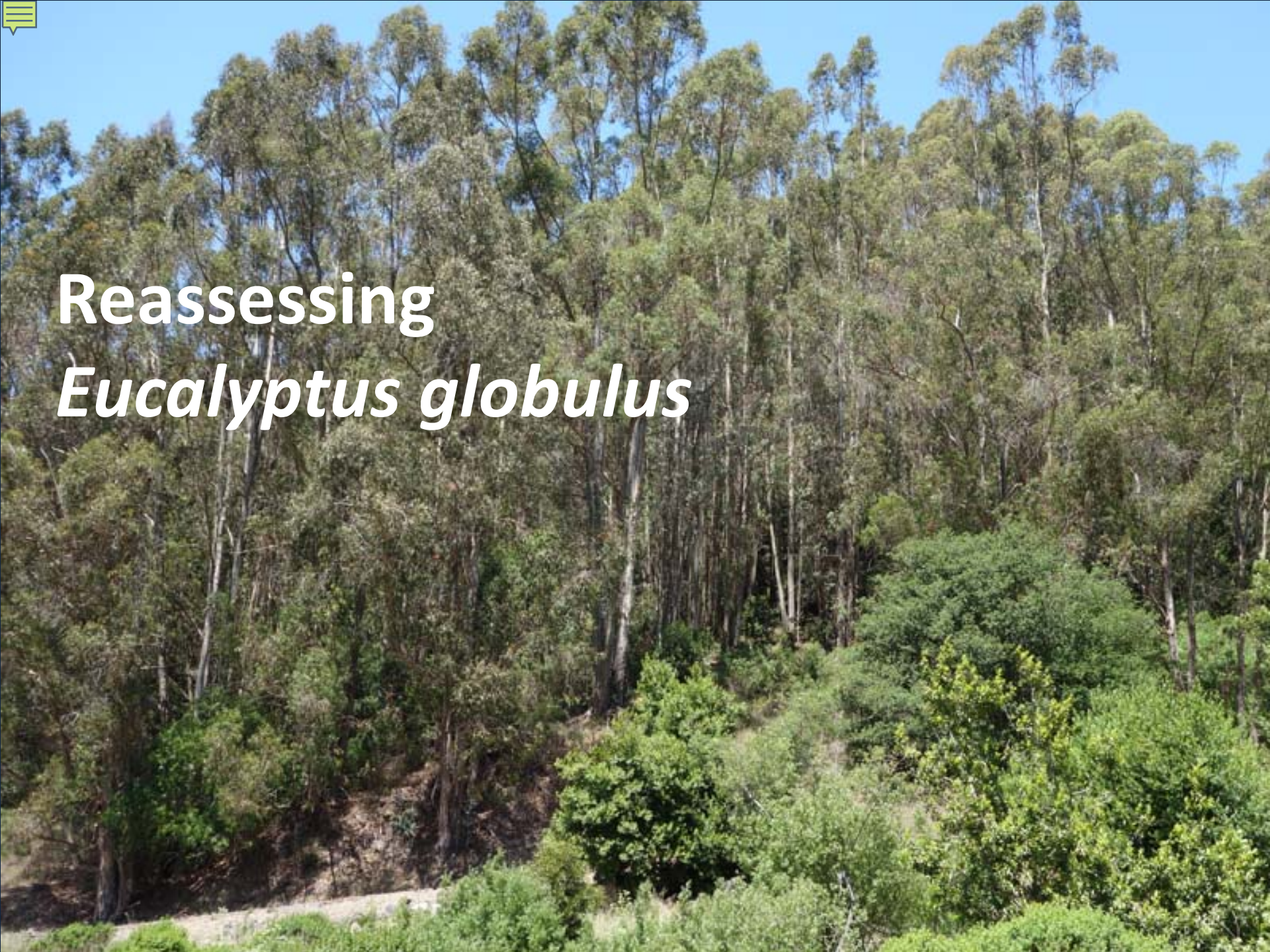


Direct Spray of Honey Bee Assuming 100% Absorption with Spray of 50% of the Body Surface

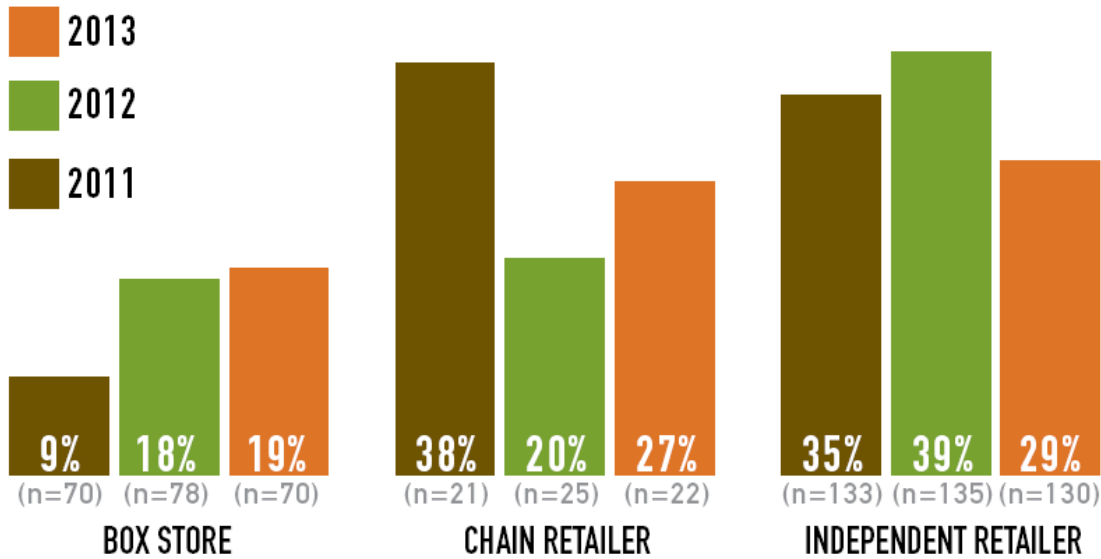




Reassessing *Eucalyptus globulus*

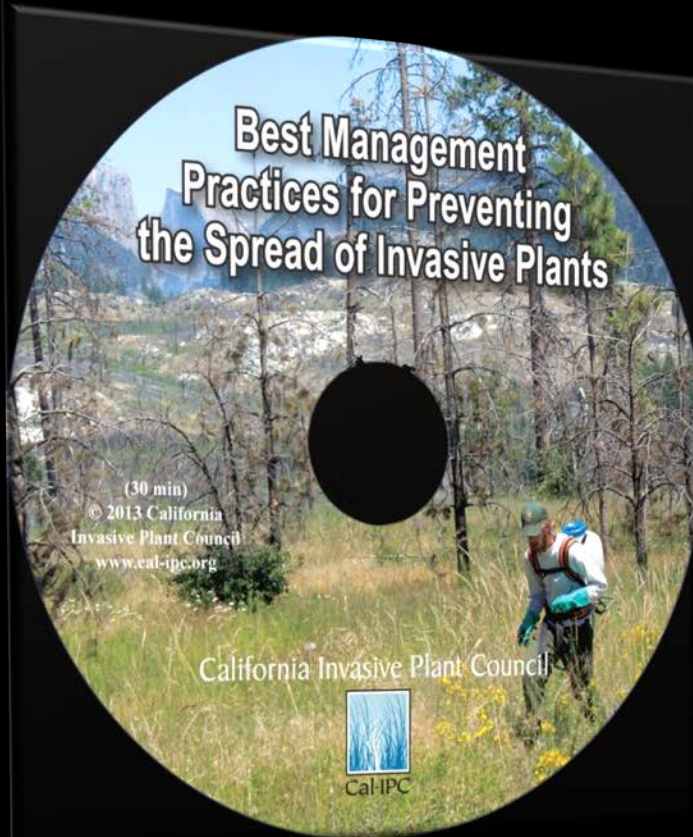


PERCENT OF STORES SELLING INVASIVE PLANTS

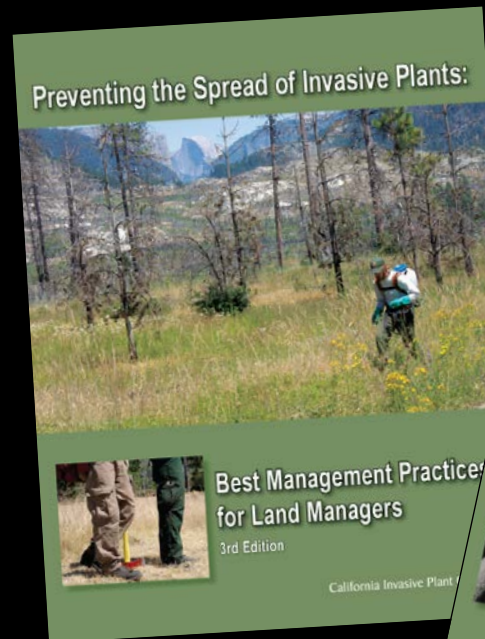


PlantRight Pledge for nurseries
Annual nursery survey
PRE screening tool

Prevention BMP Video



30 states
16 countries



Weed-Free Forage





Thank you!

Members

Symposium Sponsors

Agency & Foundation Funders