



# *Crossing the Line:* Working with Private Landowners and Slender False Brome.



# Slender False Brome - *Brachypodium sylvaticum*



# Threat of Slender False Brome (SFB)

- ✿ Spreads on its own.
- ✿ Takes over large areas.
- ✿ Excludes native plants.
- ✿ Class A noxious weed.



SFB in Oregon



SFB in San Mateo, CA

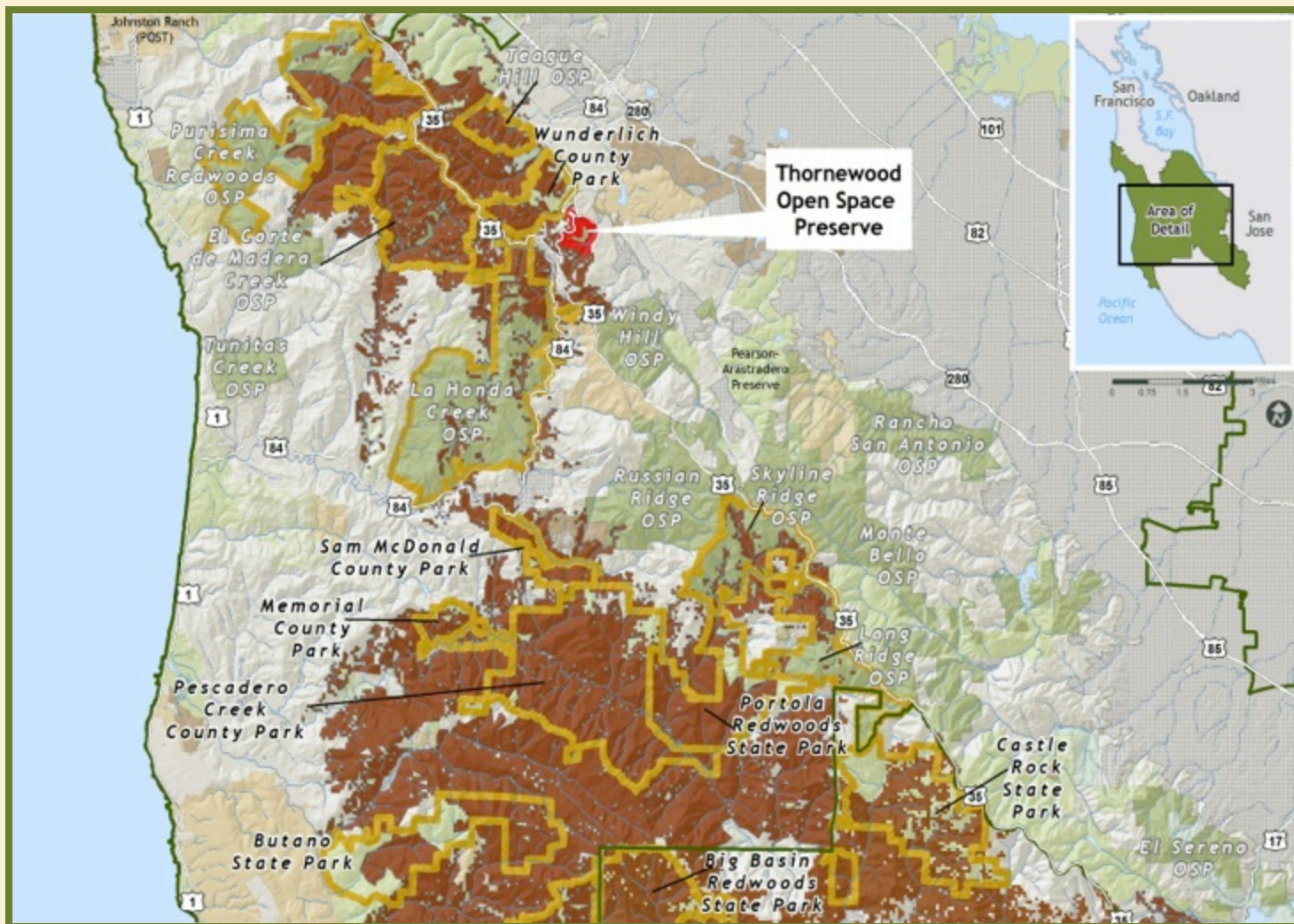


# Infestation Location





# Nearby Redwood Parks





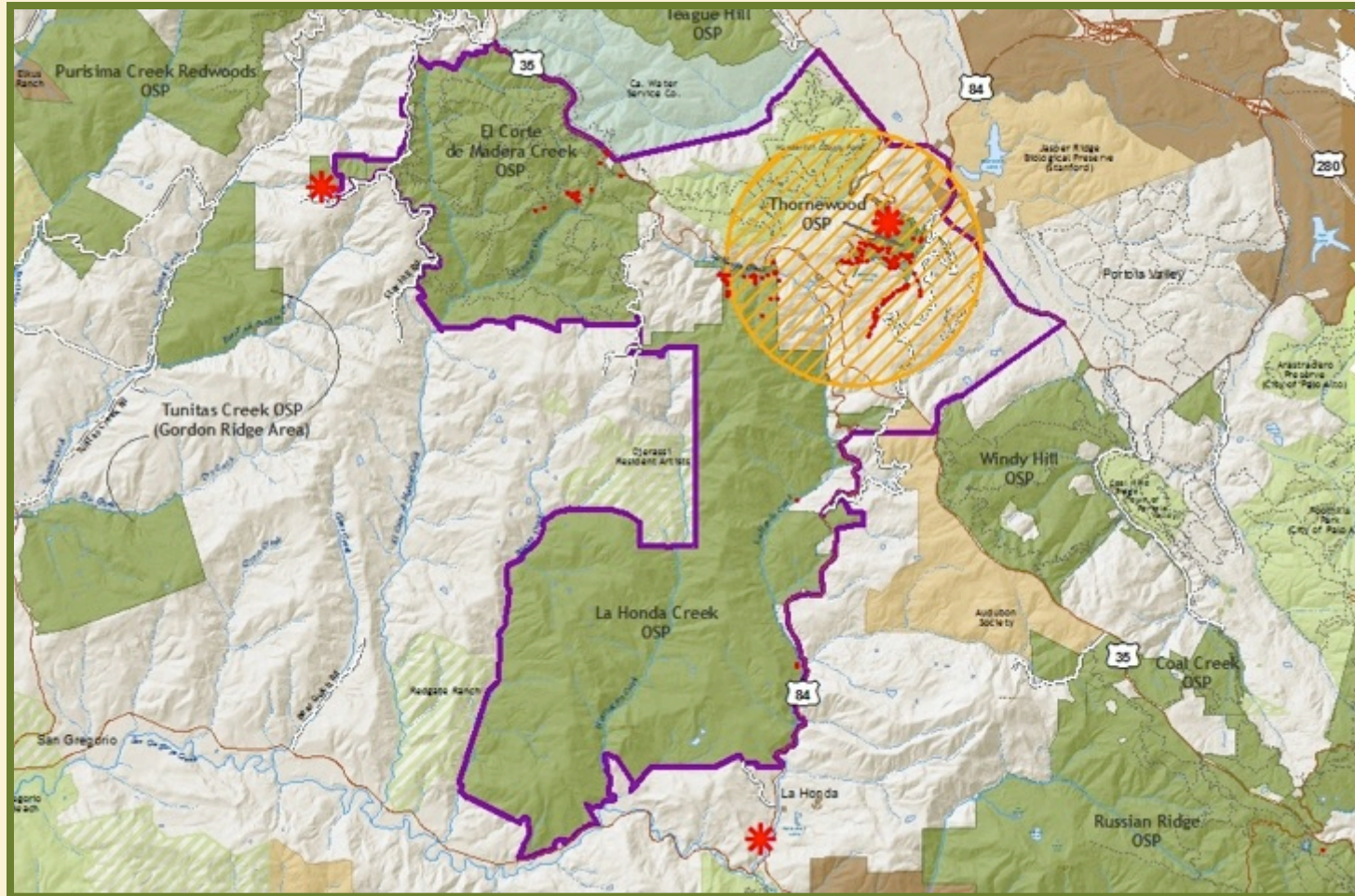
# Slender False Brome Ten-Year Work Plan

Goal: Eradicate SFB from District lands & adjacent private properties.

1. Reclassify SFB as a Class A noxious weed.
  2. Treat & monitor District preserves.
  3. Treat & monitor lands adjacent to District preserves.
  4. Seek grant funding.
- ⌘ Estimated budget of \$1.2M over ten years (2006-2016).



# Project Area



# Management Program for Private Properties

## Pre-treatment Survey.



Property Owner applies treatment or hires a professional.

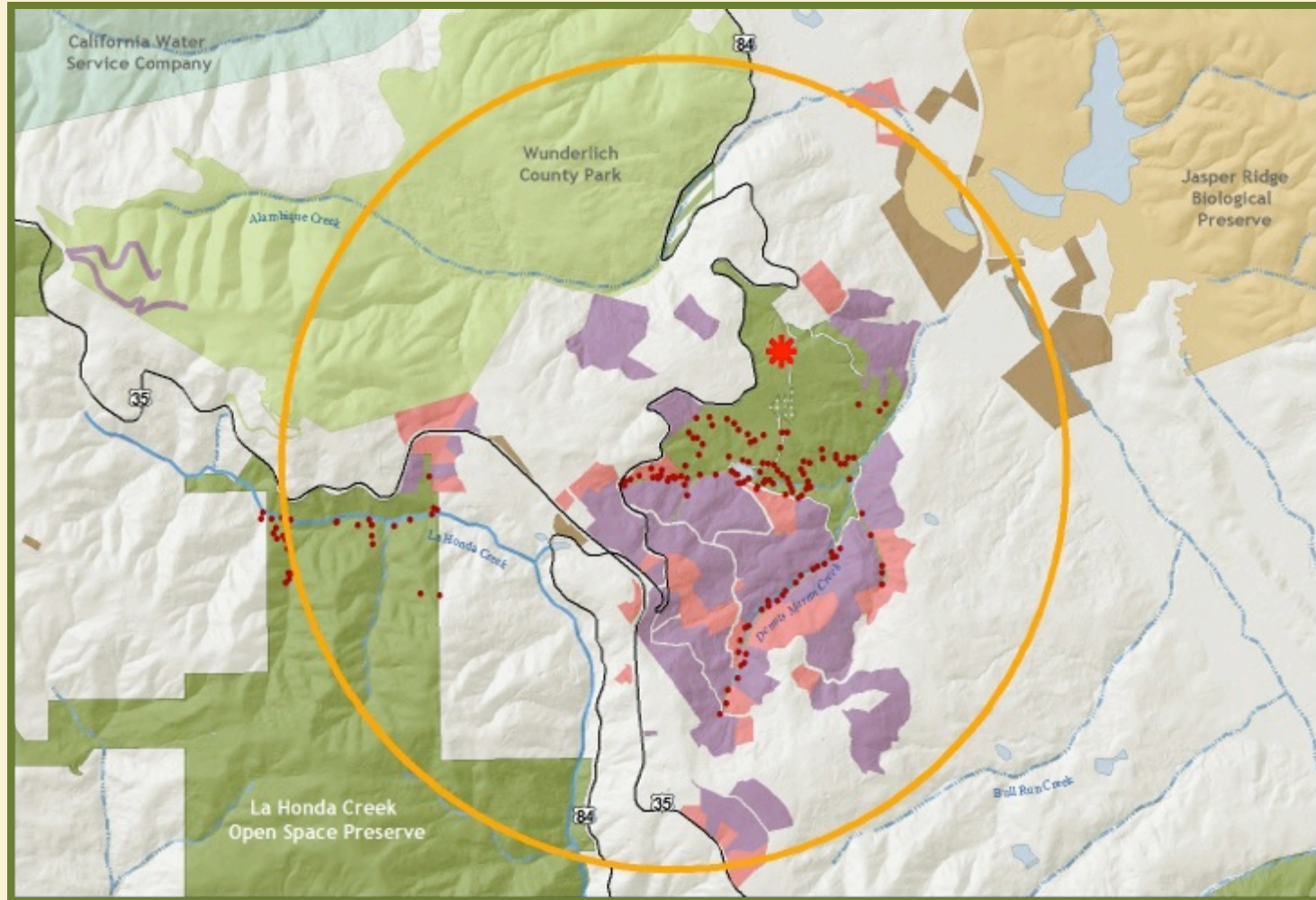


Post-treatment Survey.  
MROSD issues reimbursement check.





# Treatment on Private Lands



# Treatment Success: Herbicide



2010



2012

# Treatment Success: Manual



2010



2012



# Herbicide vs Manual Treatment

	2009		2010		2011		2012		% Change (A) 2011-2012
	Acres	%	Acres	%	Acres	%	Acres	%	
Manual	19	35	8	7	8	4	9	10	12% ↑
Herbicide	35	65	104	93	<b>175</b>	96	<b>78</b>	90	45% ↓
Acres Treated	54	-	112	-	<b>183</b>	-	<b>87</b>	-	48% ↓
Acres Surveyed	76	-	259	-	313	-	321	-	-

- Non-participating land owners.
- Herbicide hesitancy.
- Retention of participants.
- Payment of contractors.





# Challenges: Program



- Survey capacity.
- Data management.
- Reimbursement plan.
- Funding.
- Eradication.
- Other invasives.



# Acknowledgements

## • Funding:

National Fish & Wildlife Foundation.

CA Dept. Food & Agriculture: San Mateo Weed Management Area.

American Recovery & Reinvestment Act: CDFA & Bay Area Early Detection Network.

## • Interns:

Colin Kortman.  
Preston Brown.  
Janine Bird.

## • MROSD Staff.

• CA Conservation Corps.

## • Contractors:

Go Native, Inc.  
Segale & Cerini



# Slender False Brome IPM Program

*Ellen Gartside*

[egartside@openspace.org](mailto:egartside@openspace.org)



2009

*Cindy Roessler*

[croessler@openspace.org](mailto:croessler@openspace.org)



2013





# Summary: Participants, Acres Treated, and Reimbursements

	Property Owners	Acres Treated	Total Reimbursed	Grants	MROSD Contribution
2009	23	54	\$18,480	\$15,000	\$3,480
2010	59	112	\$38,115	\$18,118	\$19,997
2011	87	<b>183</b>	\$63,980	<b>\$24,400</b>	\$39,580
2012	92	<b>87</b>	\$28,930	<b>\$0</b>	\$28,930
		Totals	\$149,505	\$57,518	\$91,987



# Overall SFB Program Costs

<b>Budget Category</b>	<b>2006-2013 Total</b>	<b>MROSD Contribution</b>
Program Management	\$370,939	\$370,939
Treatment: OSPs	\$59,675	\$59,675
Treatment: Private Lands	\$149,505	\$91,987
Total	\$580,119	\$522,601

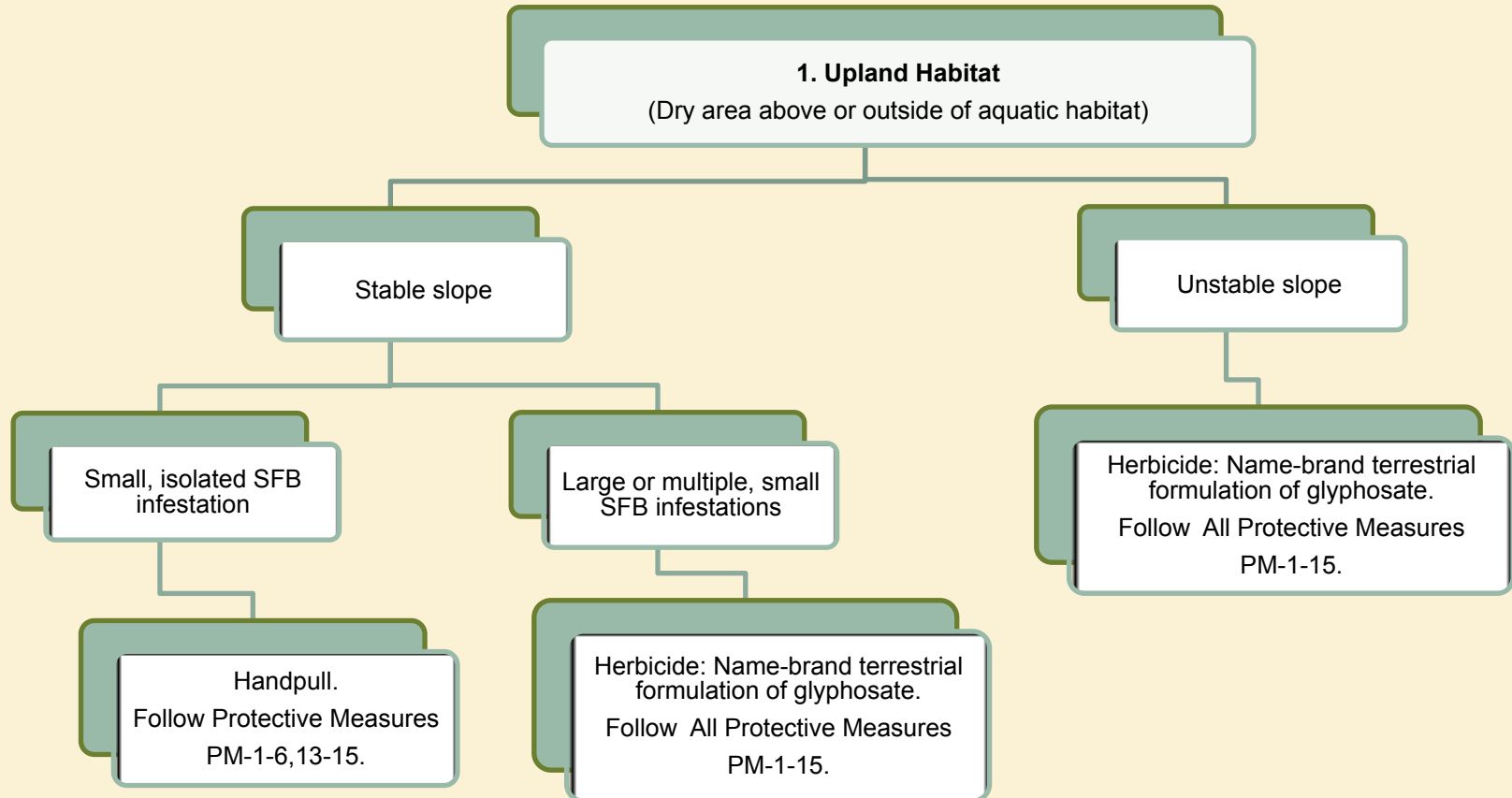


# Funding for Slender False Brome Treatment on Private Lands

NFWF FY 2008-2009	\$15,000
CDFA/CCC FY 2010-2011	\$6,868
ARRA FY 2010-2012	\$15,000
WMA FY 2011-2012	\$7,735
BAEDN FY 2011-2012	\$7,000
CDFA/CCC FY 2011-2012	\$5,915

<b>Grants</b> FY 2006-2012	<b>\$57,518</b>
<b>MROSD</b> FY 2006-2012	<b>\$64,527</b>

# SFB Treatment Decision Tree

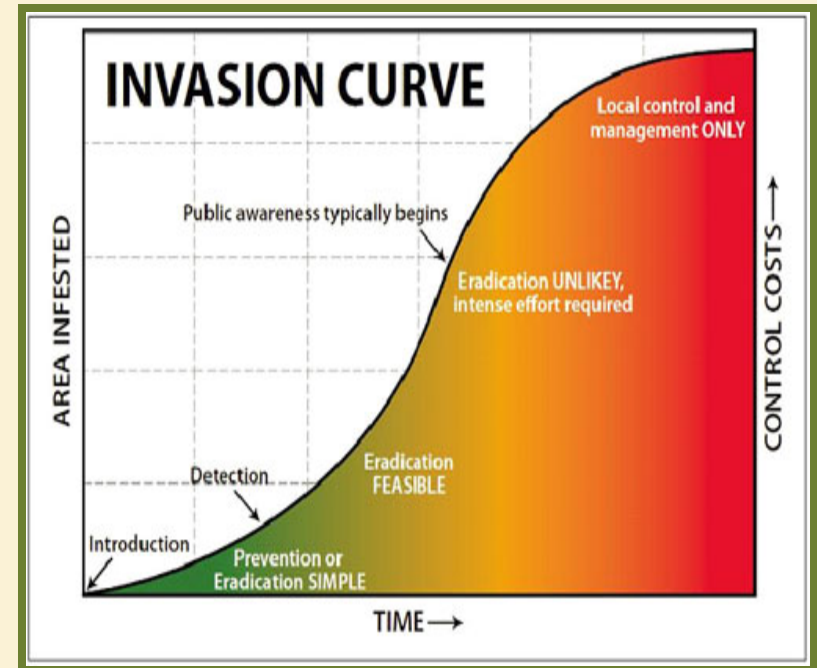


# Successful Eradication Programs

## ✿ Key Components:

1. Early Detection/Rapid Response
2. Effective control methods
3. Monitoring
4. Education
5. Commitment

Reference: DiTomaso, J. M. 2000.  
Invasive weeds in rangelands:  
Species, impacts and management.  
Weed Sci. 44:255-265.





# Midpeninsula Regional Open Space District

