

A photograph of a grassland landscape. The foreground is filled with tall, golden-brown grasses. A red dashed line runs horizontally across the middle of the image, separating the foreground from the background. The background shows a hillside with sparse vegetation and a few trees under a clear blue sky.

Preserving serpentine grasslands: ten years of research and management to control barbed goatgrass (*Aegilops triuncialis*) at the McLaughlin Reserve

Aigner, Paul A.¹, Case, Erica J.², Harrison, Susan P.¹, and Howard V. Cornell¹

¹Department of Environmental Science and Policy

²Graduate Group in Ecology

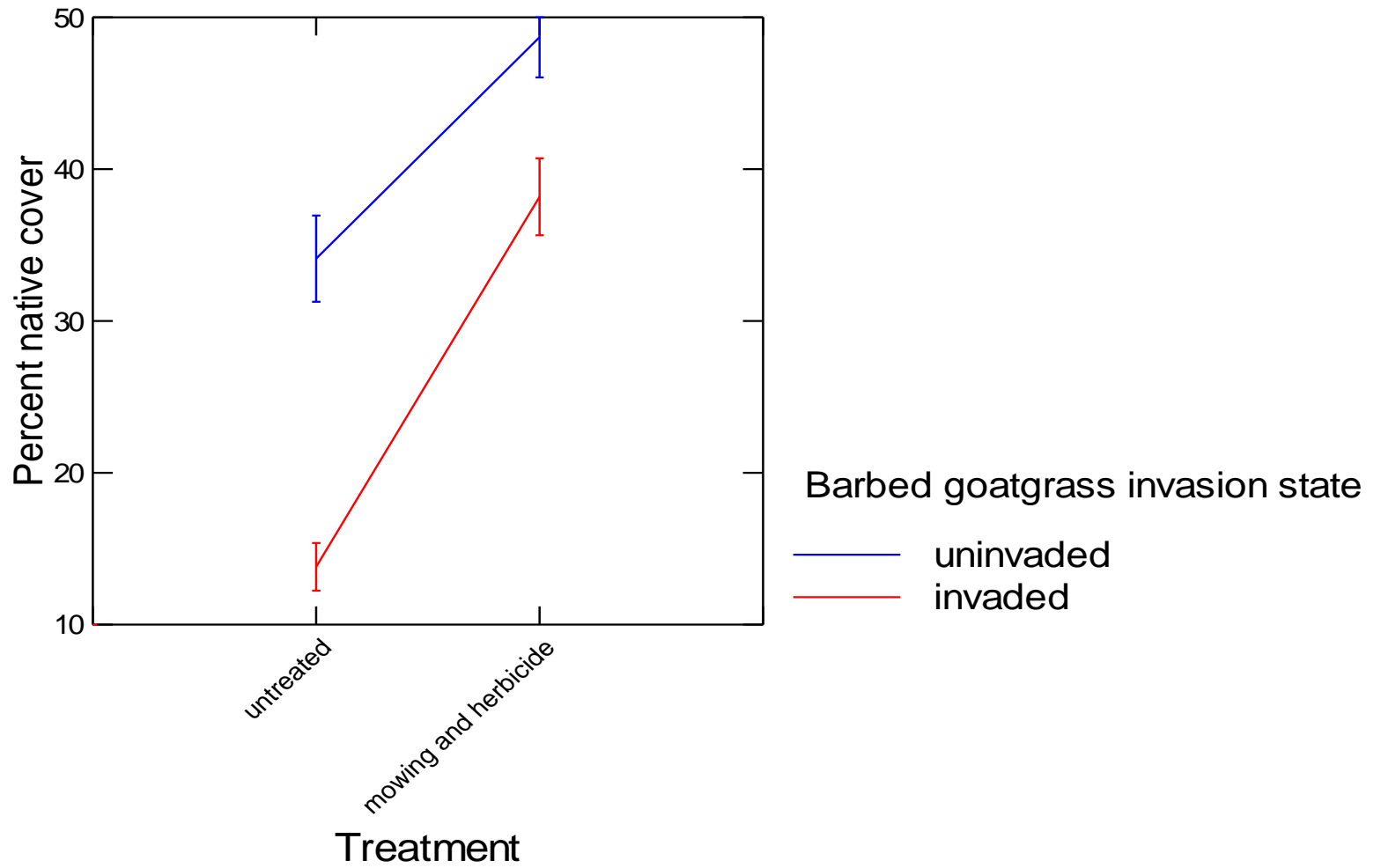
University of California, Davis



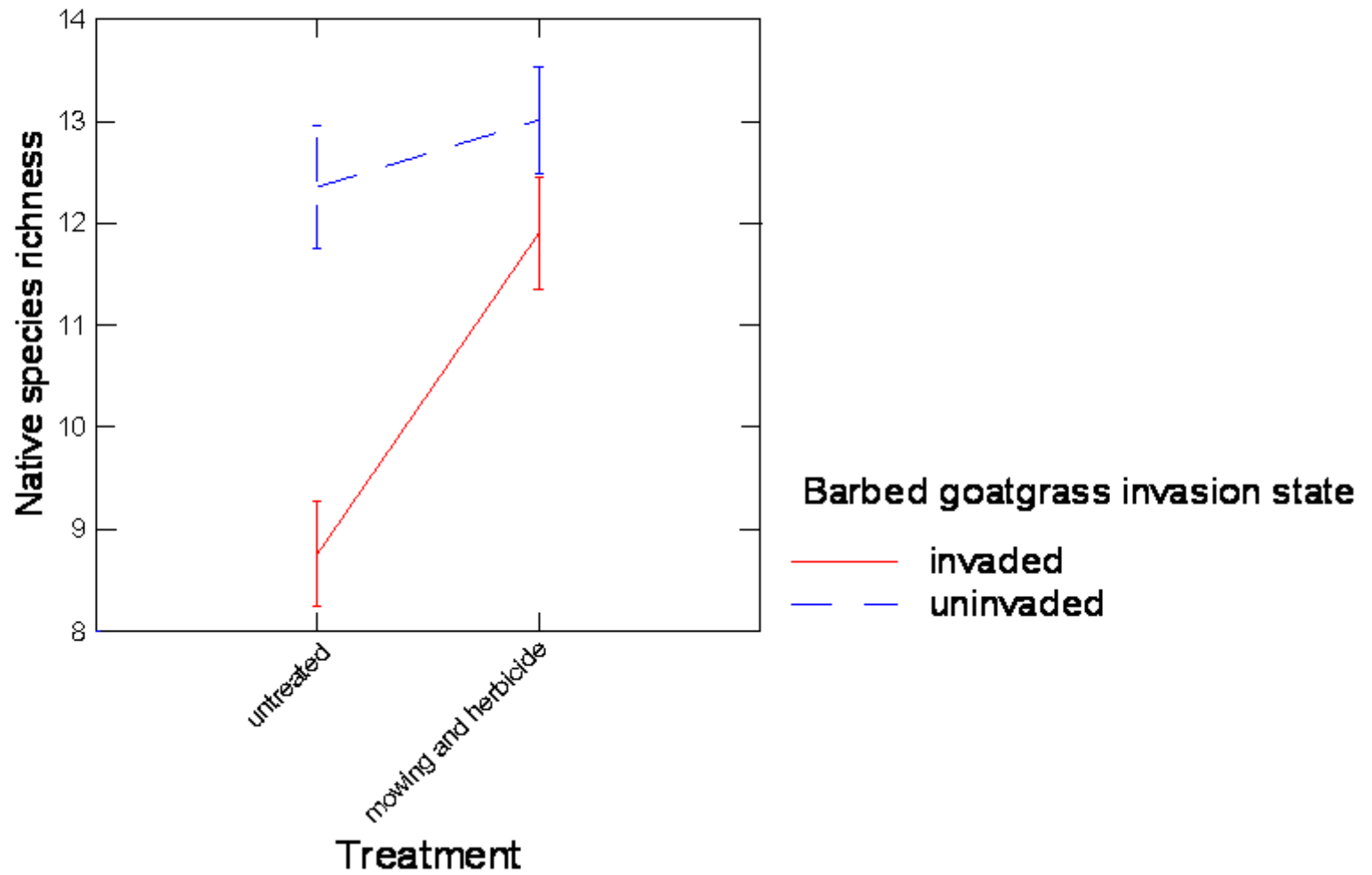


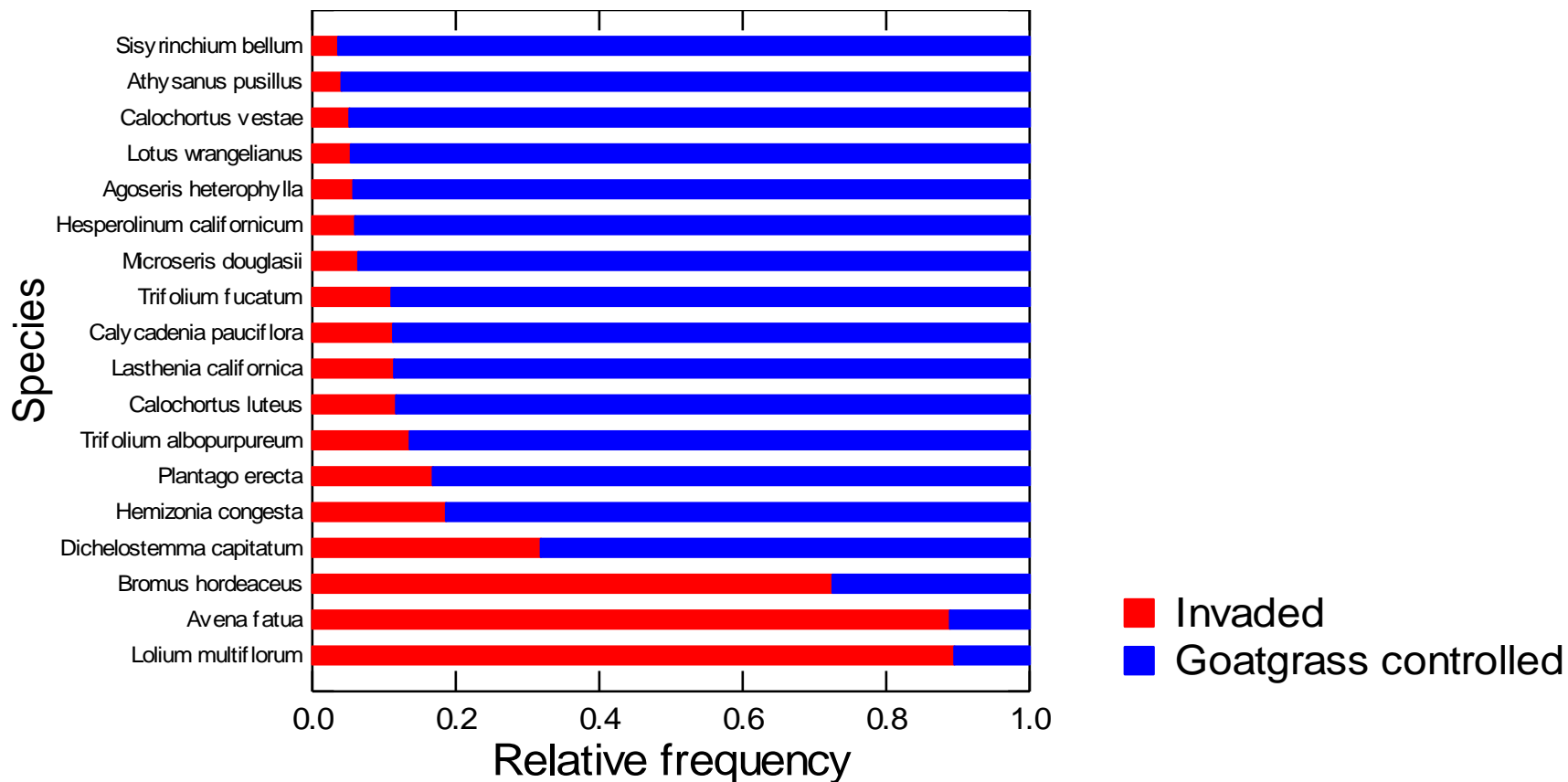


Goatgrass invasion and control affect native plant cover



Goatgrass invasion and control affect native plant diversity





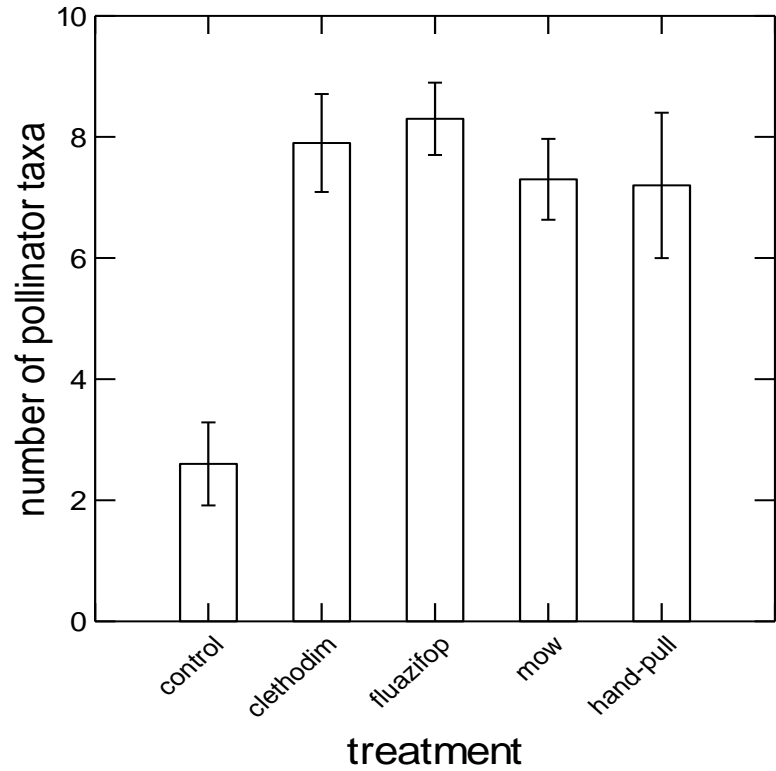
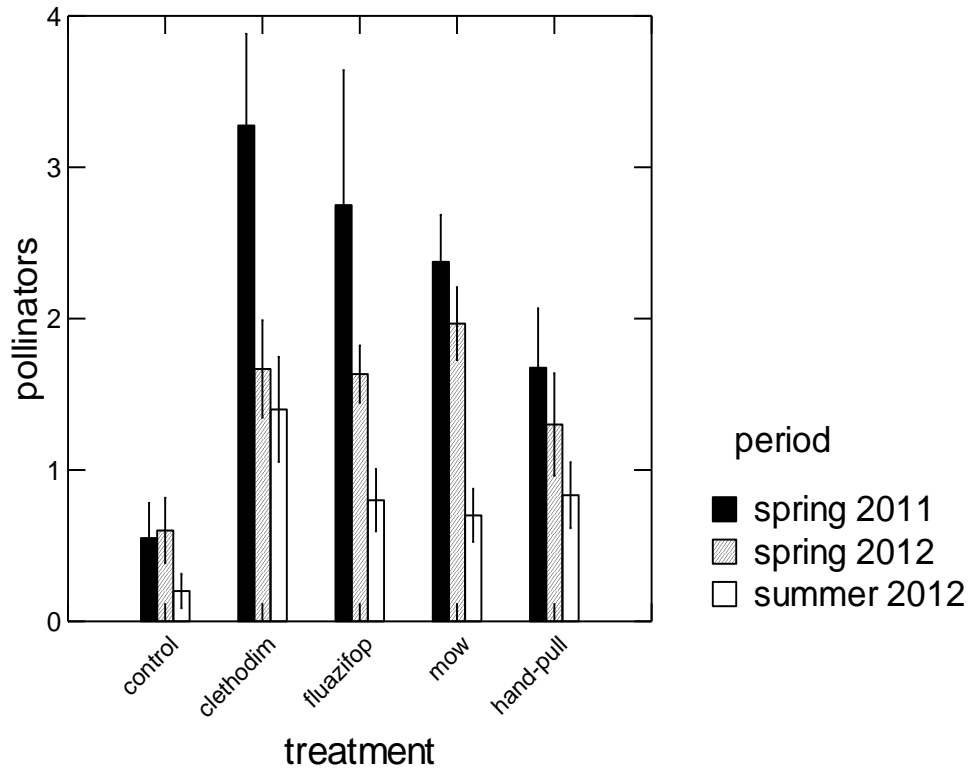


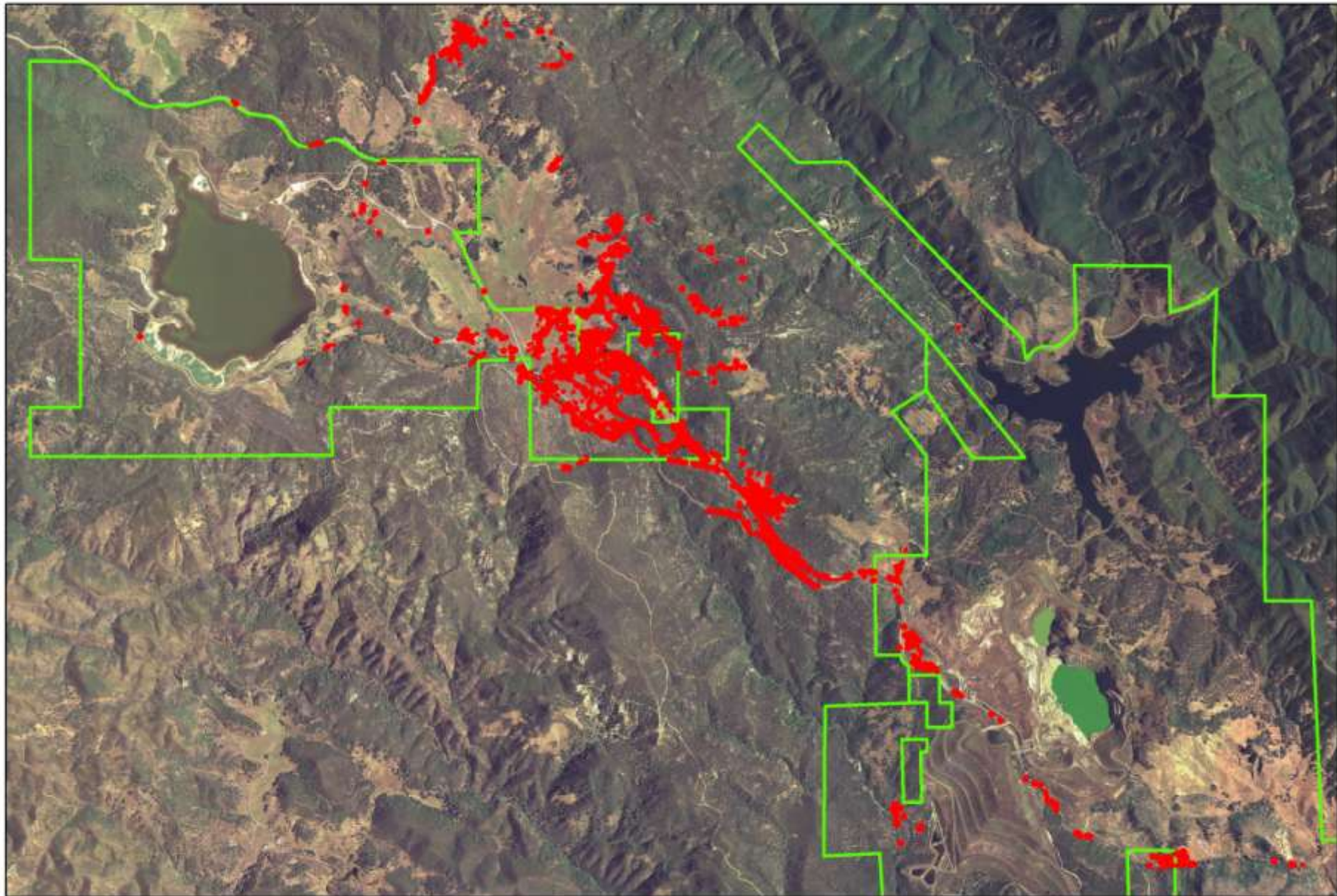




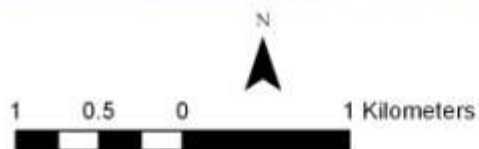


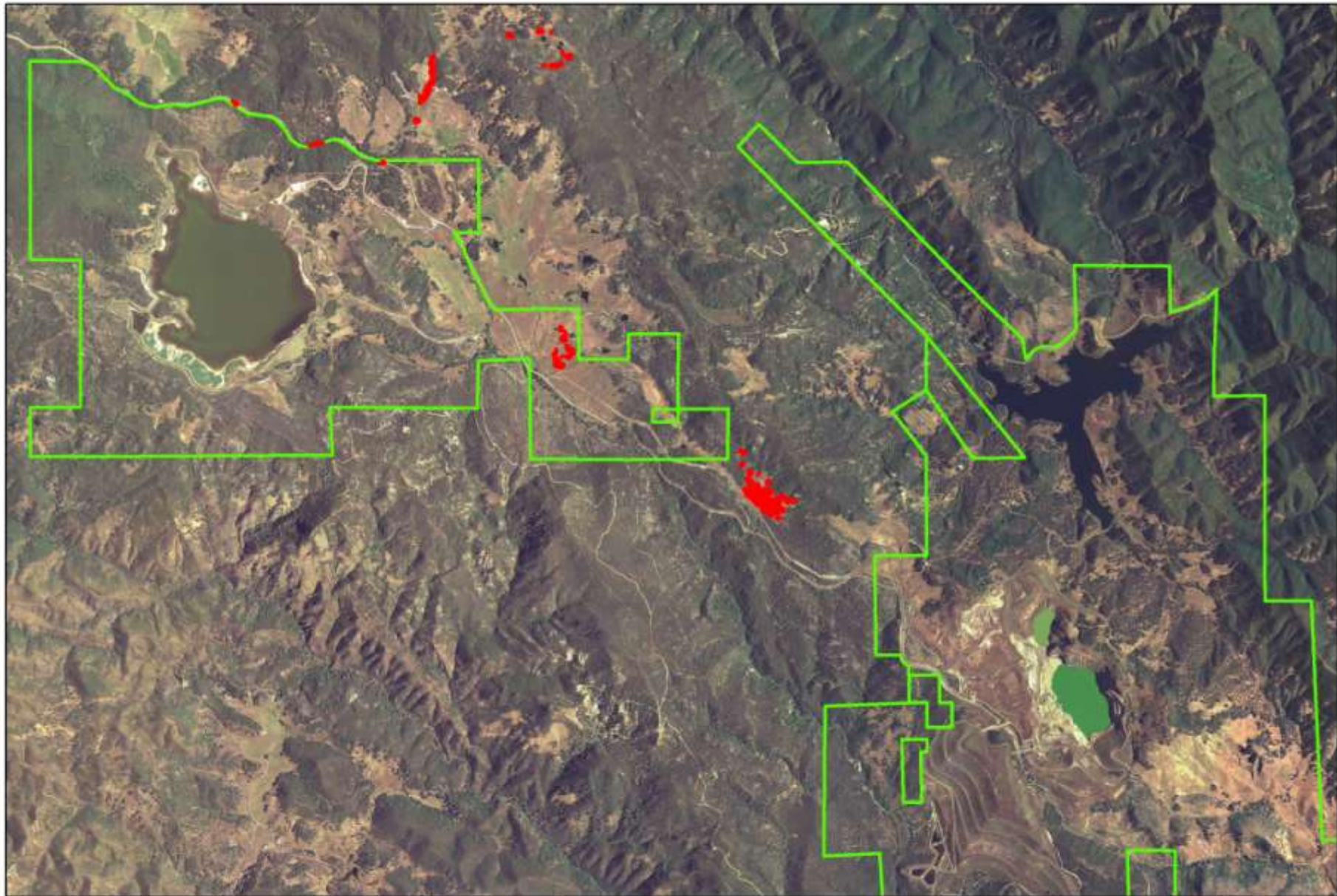




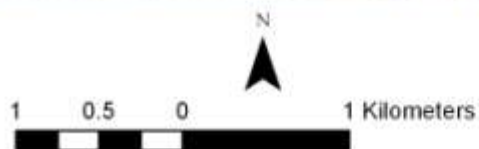


Barbed Goatgrass 2008





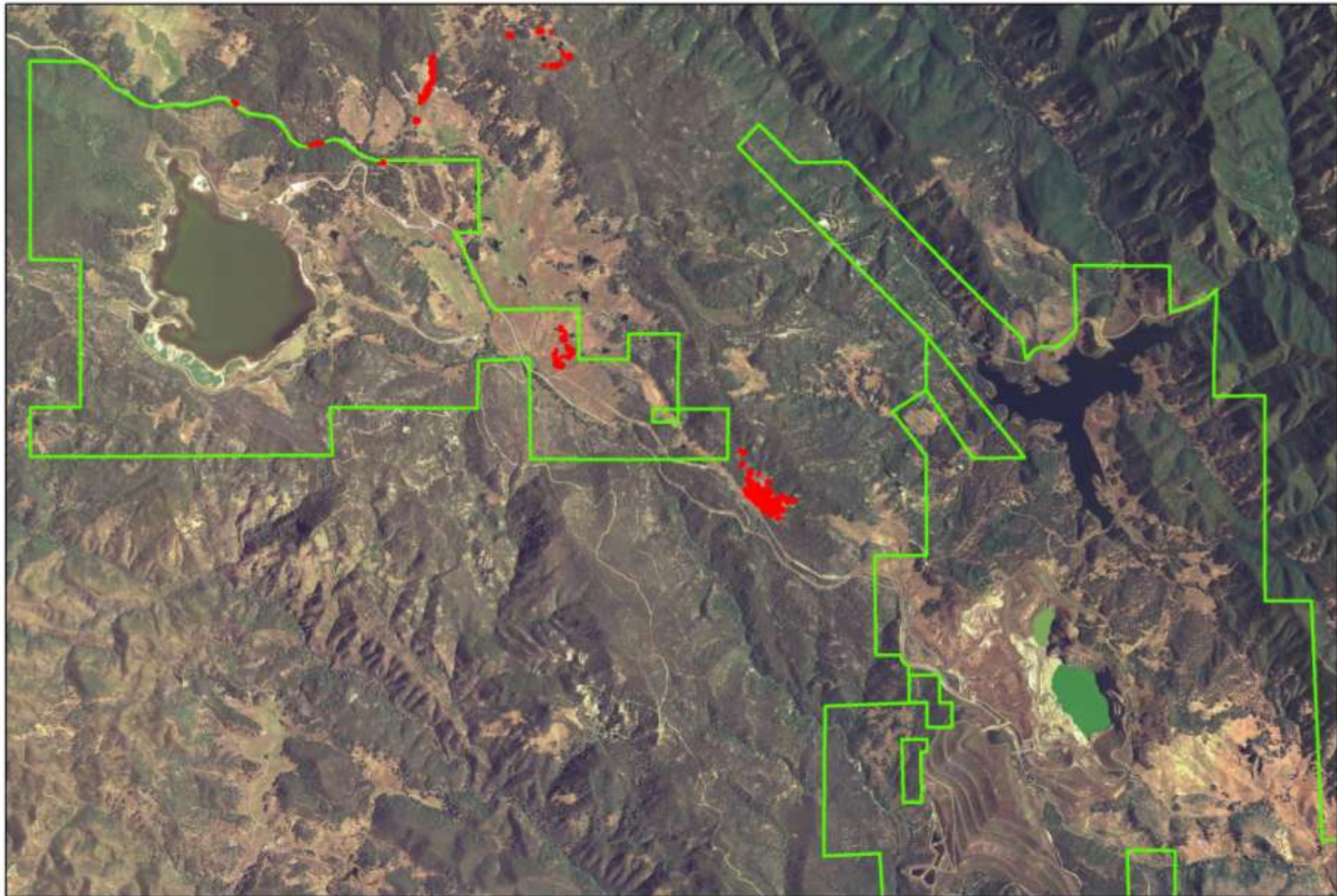
Barbed Goatgrass 2012



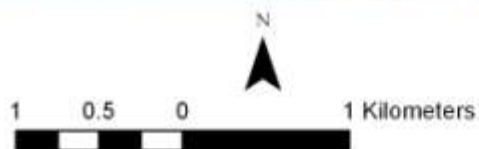








Barbed Goatgrass 2012



Thanks to:

Reserve Staff

Cathy Koehler

Rhett Woerly

Leslie Scott

Interns

2008

Alexi Dart Padover

2009

Denise Negrillo

Andrew Badje

Christine (Jones) Jones

Ariela Zamcheck

2010

Christie Youngs

Holden Mills

Bob Ayres

Melissa DeSiervo

Emily Bergmann

2011

Courtney Gomola

Suzie Janicke

2012

Monchie Indarte

Paola Arenas

Shirley Wu

Ella Samuel

Scott Woodin