

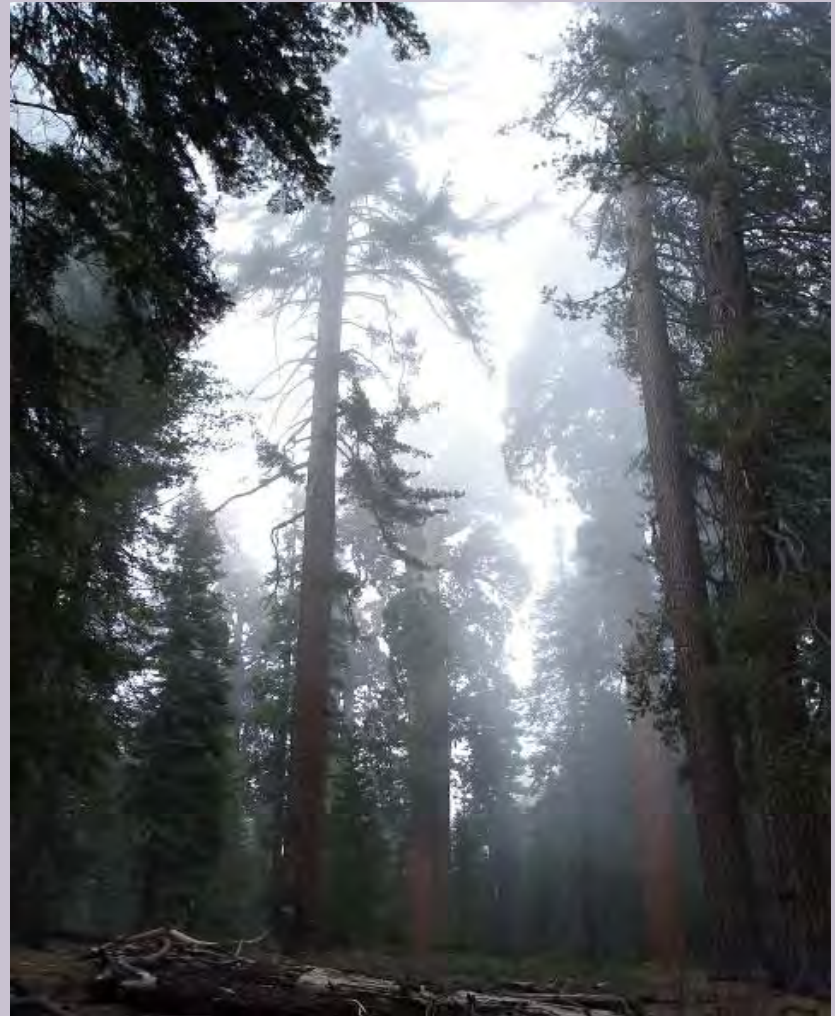
Sustainable Forests, Healthy Communities and Vibrant Rural Economies

Kim Carr

Sierra Nevada Conservancy

Sierra Nevada Conservancy's Mission

- Initiate, encourage and support efforts that improve the **environmental, economic and social well-being** of the Sierra Nevada Region, its communities and the citizens of California.



Six Sierra Subregions

North Sierra

Lassen, Modoc, Shasta

North Central Sierra

Butte, Plumas, Sierra, Tehama

Central Sierra

El Dorado, Nevada, Placer, Yuba

South Central Sierra

Amador, Calaveras, Mariposa, Tuolumne

East Sierra

Alpine, Inyo, Mono

South Sierra

Fresno, Kern, Madera, Tulare

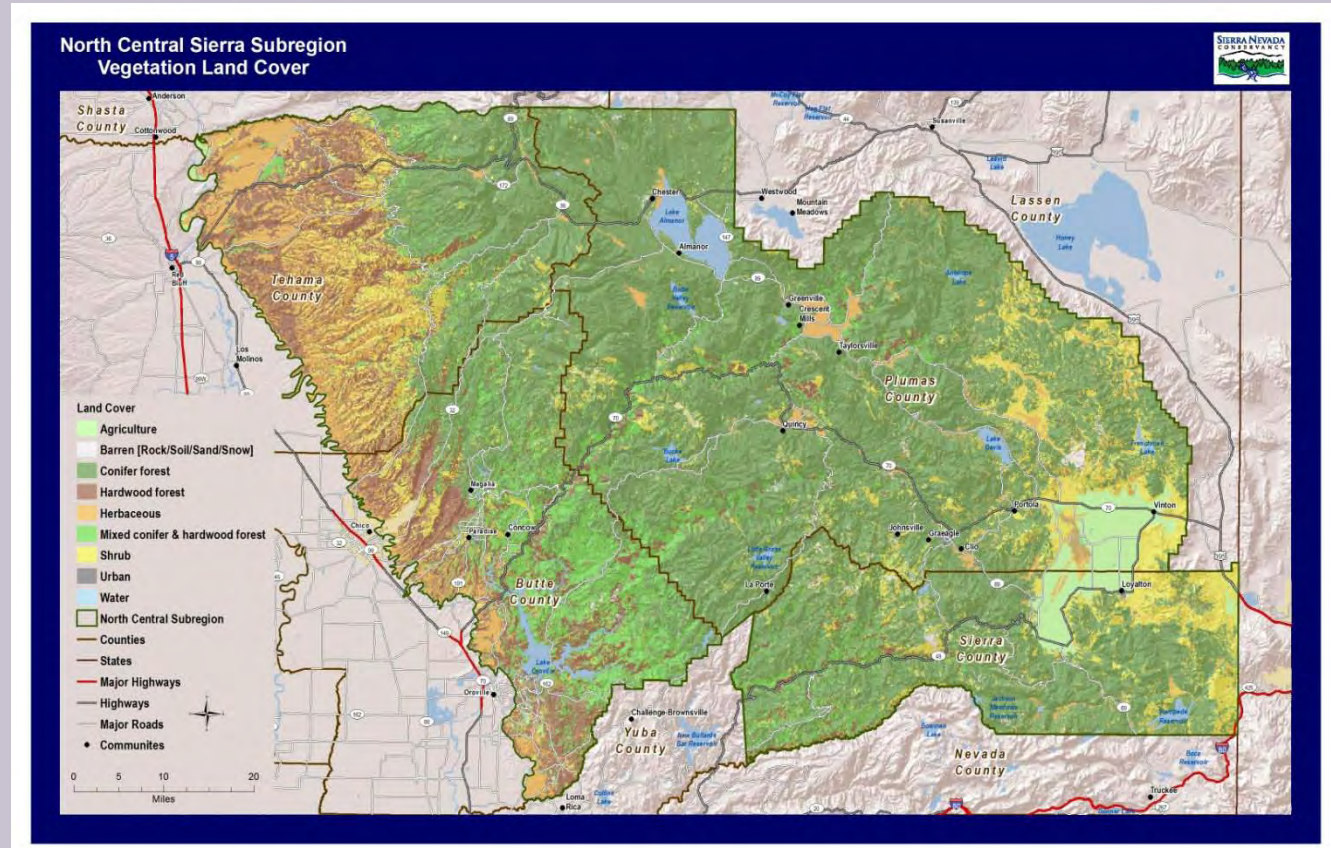


Got Water?

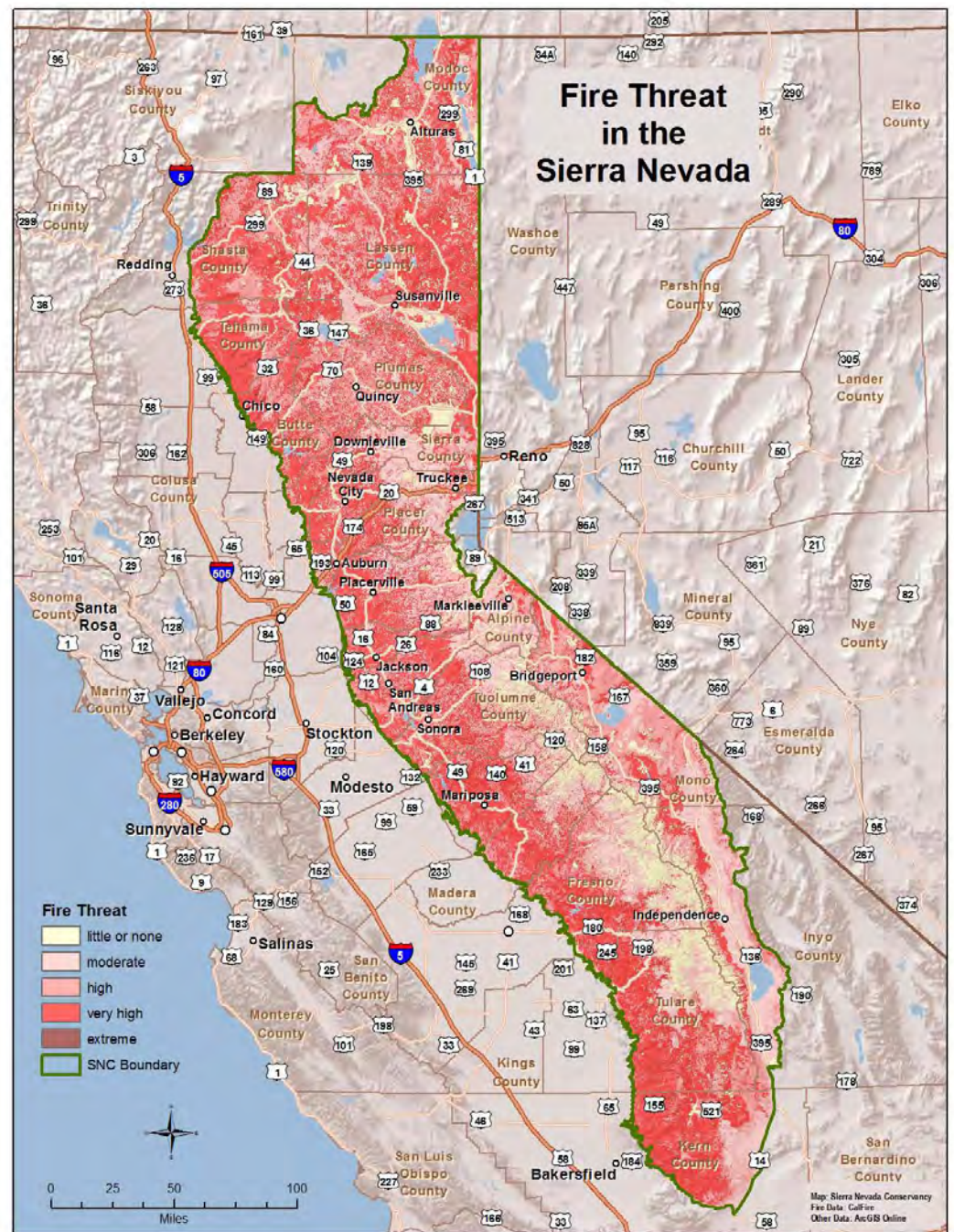
Approximately 60% of California's developed water supply originates in the Sierra Nevada Region.



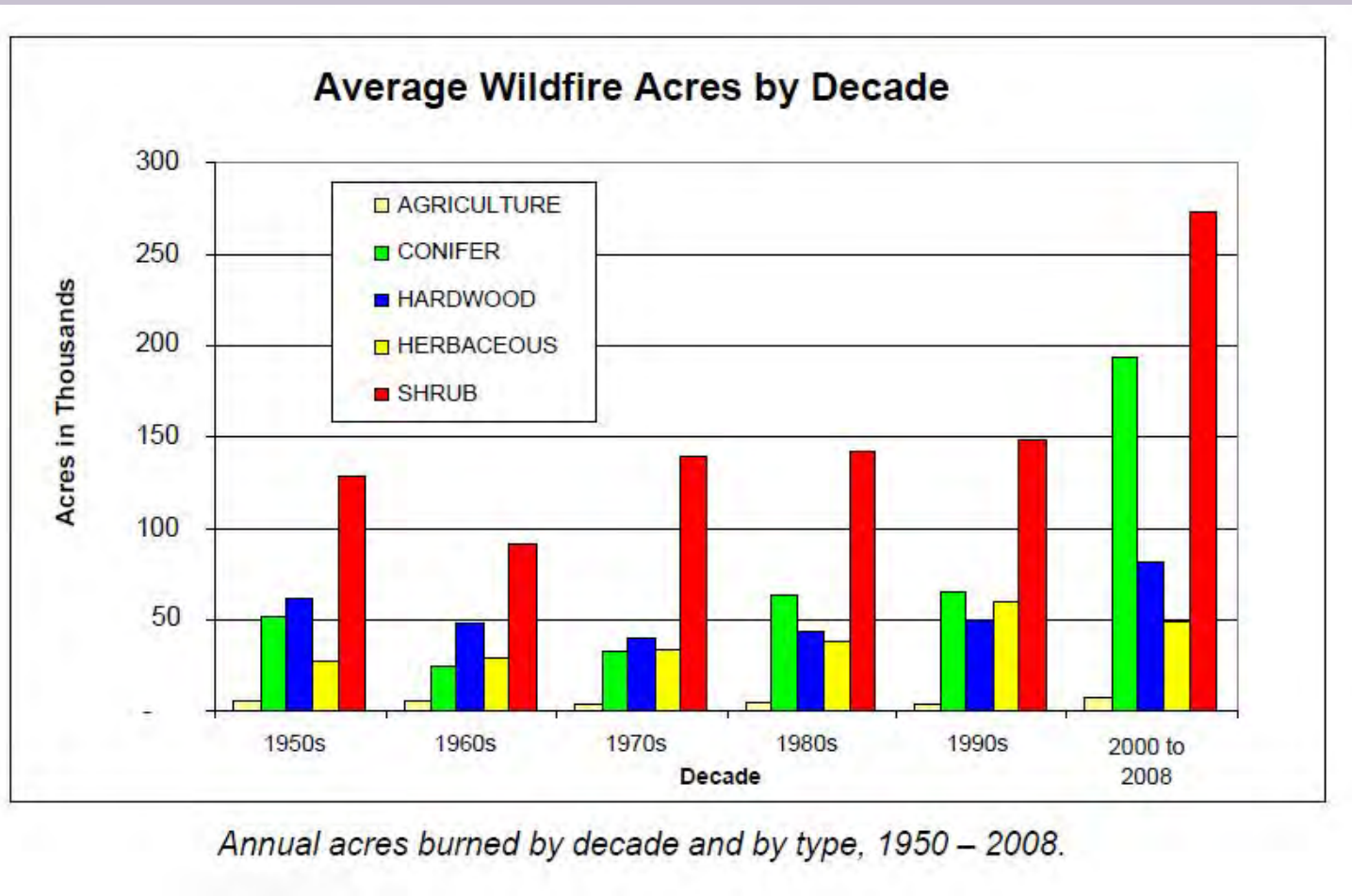
The Sierra Nevada Provides Habitat for 66% the of State's Species



Majority of population lives in and among high fire threat areas



Acres Burned by Decade are on a Steady Increase



Sierra Nevada Forest & Community Initiative

Objectives:

- Work to create ecologically healthy forests, including reducing the risk and consequence of large, damaging fires;
- Create locally sustainable economic activity in communities in the region, based on necessary forest management activities

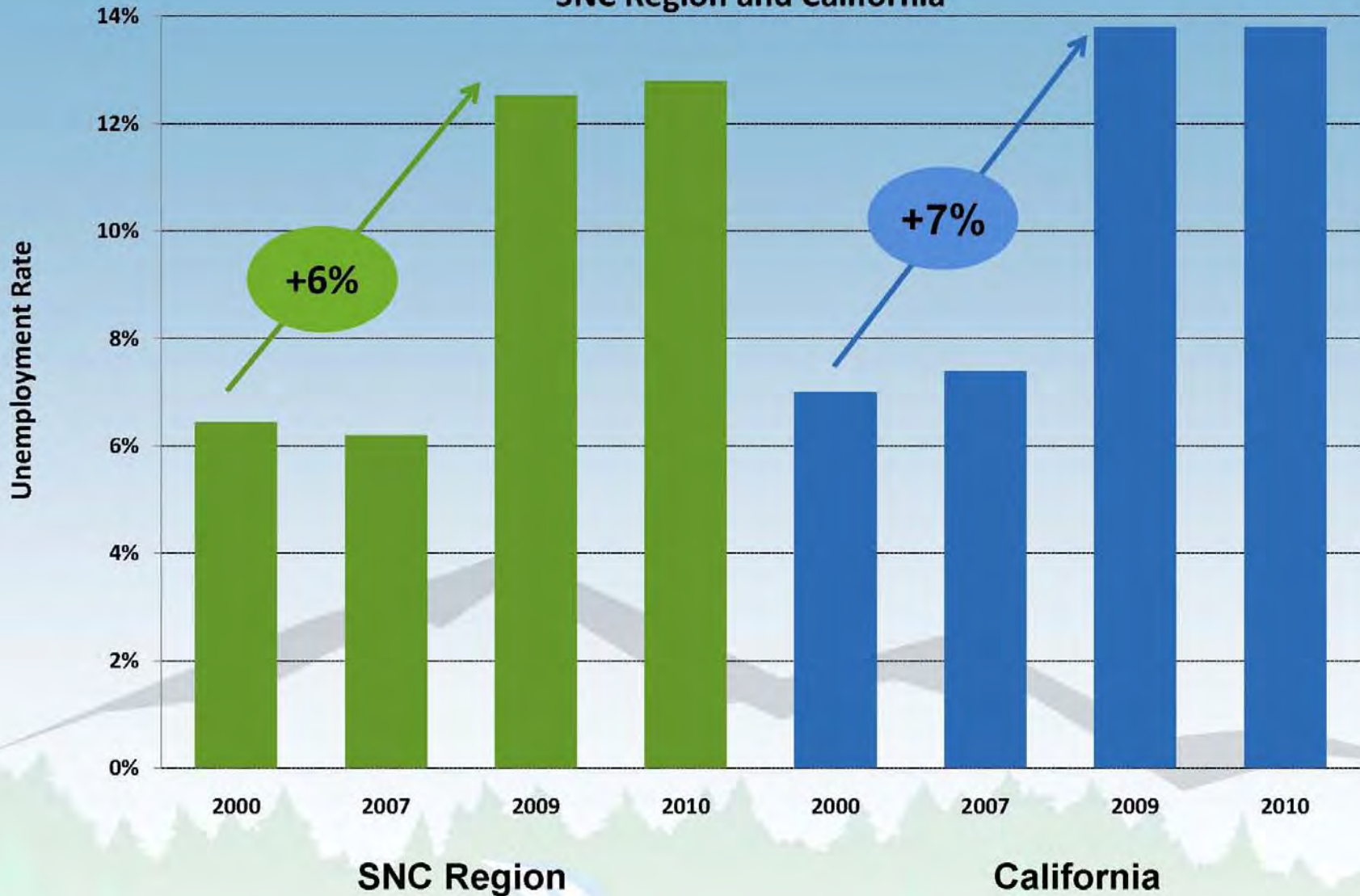
Untreated & Treated Forest Area



Calaveras County

Unemployment Rate

SNC Region and California



Geographic Definition: Census Block

Data Source: U.S. Census Bureau, 2000 Census of Population and Housing. ESRI forecasts for 2007-10.

Job Creation Potential



Fuels Treatment: **Thinning**



**Biomass material
transport to facility**

Job Creation Potential Continued:



**Solid Wood
Product: Lumber,
Molding &
Flooring**



**Clean, woody biomass
energy plant**

Trends with Federal, State and local land managers

- Unprecedented collaboration of all stakeholders around ecological restoration
- an all lands approach, with multiple objectives, to ecological restoration
- Triple bottom line – environment, economy and social equity
- Quantifying environmental benefits



Merced River Canyon Invasive Plant Removal



Merced River Canyon

2005 Yellow Starthistle infestation



2011 only one Yellow Starthistle plant found



Grant Program 2011 - 2012

- Pre-Application Submission Deadline
October 21
- Full Application Submission Deadline
January 23
- SNC Board Acts
June 7, 2012

Eligible Projects

- Forest management to increase forest resilience and/or improve habitat conditions and biodiversity
- Forest treatments to address forest pest and invasive species
- Meadow restoration to improve habitat function and water retention

Sierra Nevada Rural Communities Vision

- ✓ reduce the risk of large, damaging fires;
- ✓ promote water quality and natural storage of water;
- ✓ protect and restore habitats;
- ✓ create jobs and vibrant rural economies;
- ✓ protect and enhance the production of wood products resulting from sustainable forest management; and
- ✓ promote distributed, community-scaled biomass energy.