

A silhouette of a helicopter in flight against a bright, hazy sky, positioned over a dark, silhouetted landscape. The text "Native Range Inc." is overlaid in green on the upper right portion of the image.

Native Range Inc.

Application of Feral Animal Eradication Techniques to Invasive Plants: Early Detection and Rapid Response

John Knapp, Coleen Cory, Kelvin Walker, and Norm Macdonald



Santa Barbara

Ventura

Los Angeles Metropolitan Area

San Miguel

Santa Cruz

Anacapa

Santa Rosa

Santa Barbara

Santa Catalina

San Nicolas

San Clemente

PACIFIC OCEAN





Time = Success

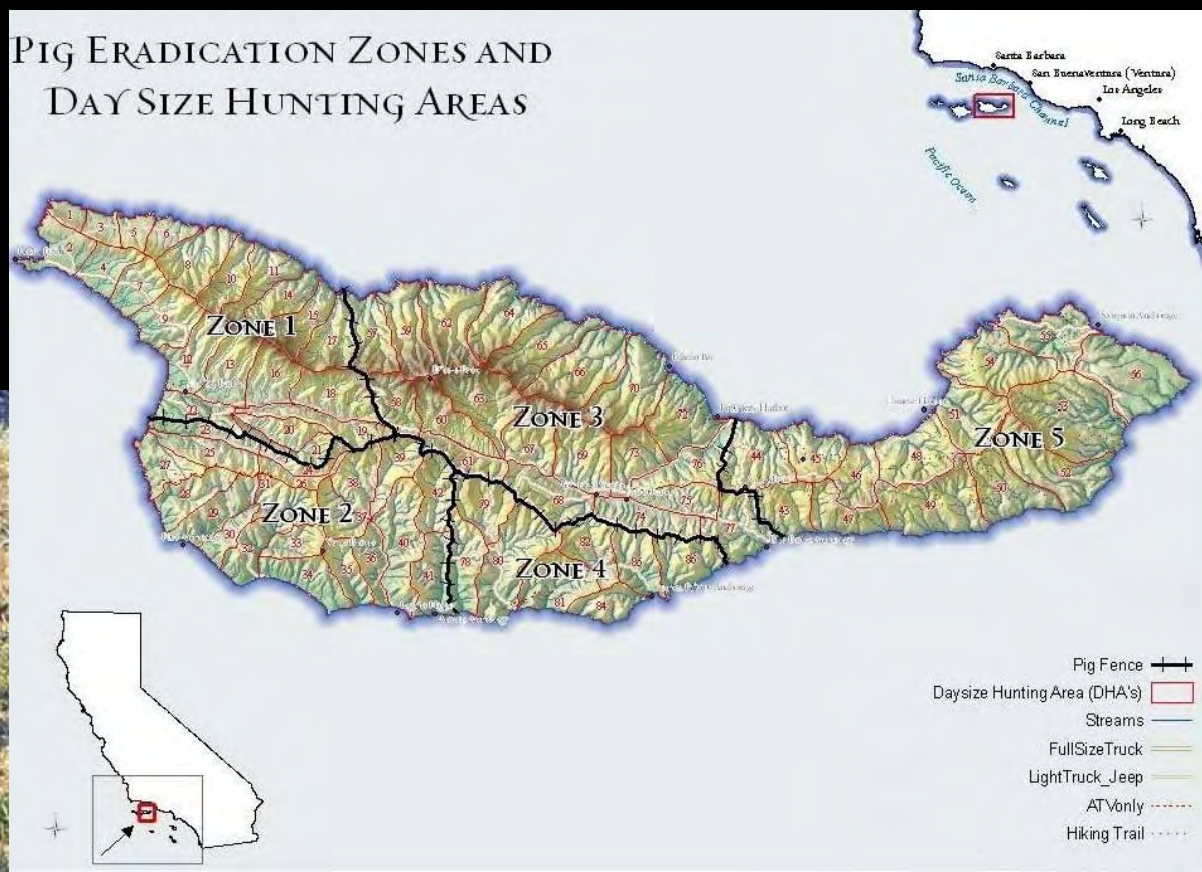


Eradication Criteria

1. Detect all individuals
2. Put the entire population at risk
3. Outpace reproduction
4. Commitment to finish

Feral Pig Removal

- ❑ Pigs removed from 25 islands worldwide
- ❑ SCI- 2nd largest successful pig eradication
- ❑ >5,000 pigs removed
- ❑ 22 months
- ❑ No injuries
- ❑ 10 staff



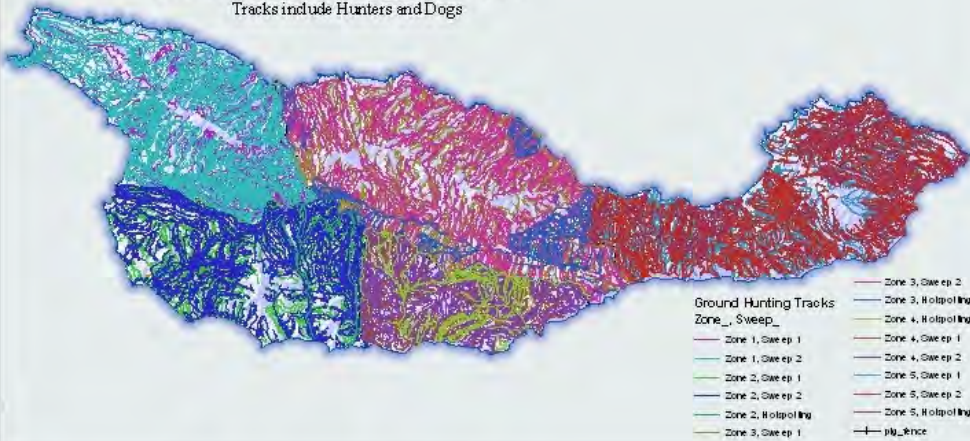


Feral Pig Survey Tracks and Dispatches

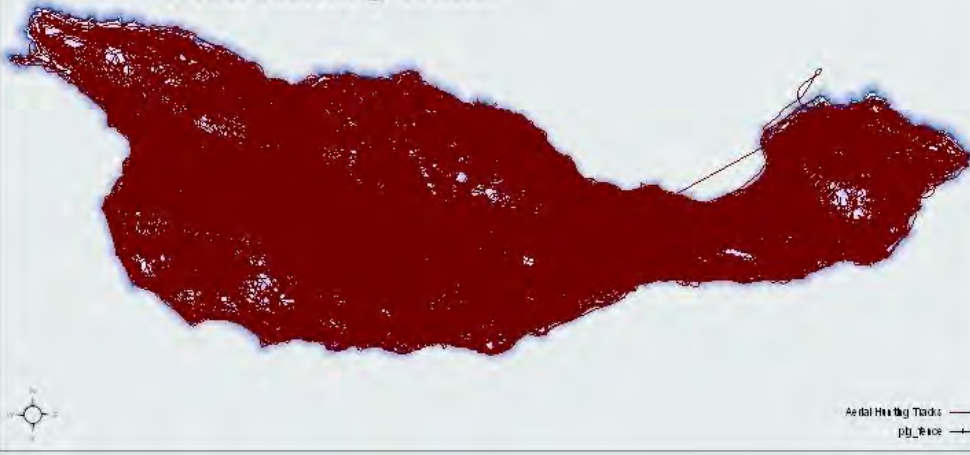


Ground Hunting Tracks

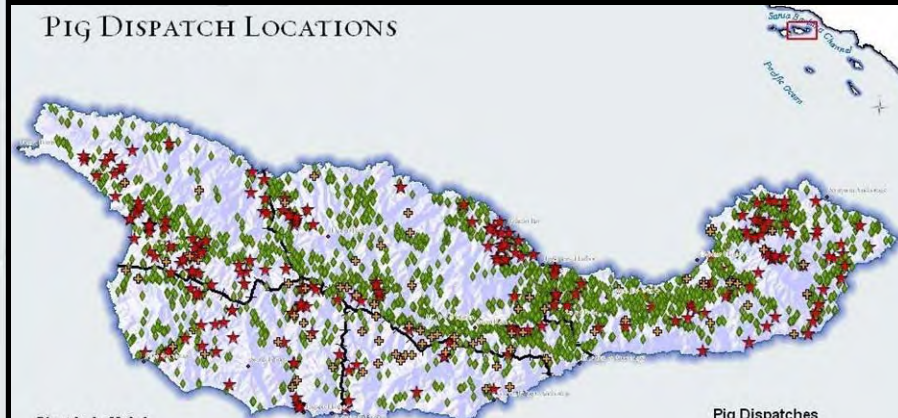
Tracks include Hunters and Dogs



Aerial Hunting Tracks



PIG DISPATCH LOCATIONS



Dispatches by Method

Total Dispatches via Aerial shooting	2875
Aerial Dispatches Zone 1	573
Aerial Dispatches Zone 2	418
Aerial Dispatches Zone 3	1361
Aerial Dispatches Zone 4	73
Aerial Dispatches Zone 5	1480
Total Dispatches via Ground	261
Ground Dispatches Zone 1	65
Ground Dispatches Zone 2	41
Ground Dispatches Zone 3	57
Ground Dispatches Zone 4	9
Ground Dispatches Zone 5	89
Total Dispatches via Misc	146

Dispatches by Zone

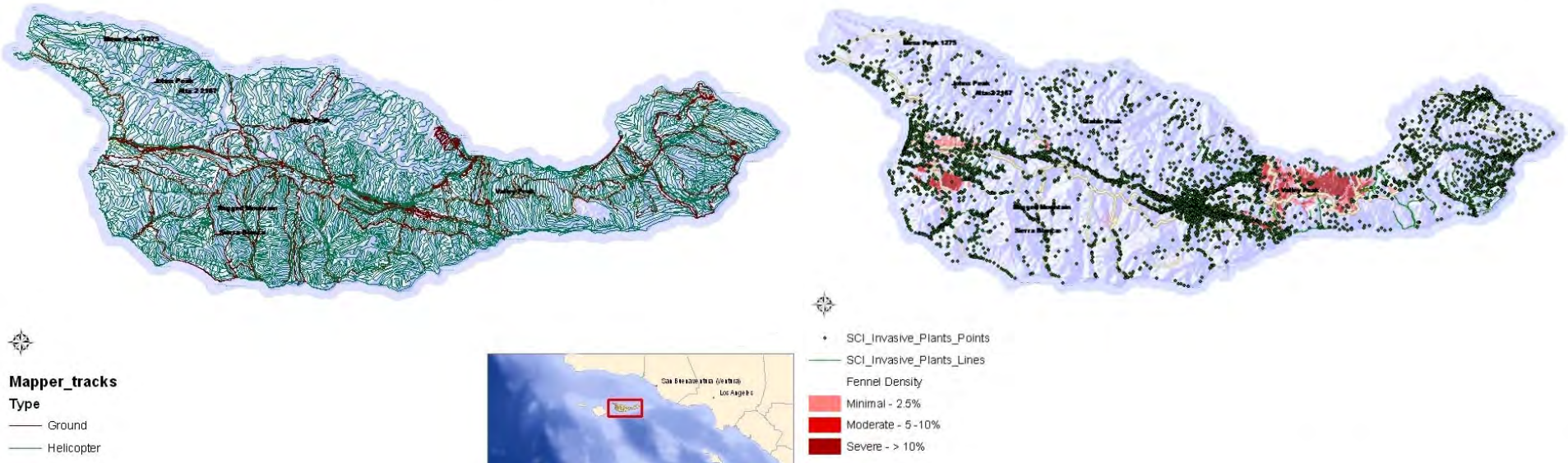
ZONE 1	798
ZONE 2	579
ZONE 3	1844
ZONE 4	103
ZONE 5	1566

Total Number of Dispatches (Including Traps): 5036

Weed Survey Tracks and Populations

GROUND AND AERIAL MAPPING TRACKS
APRIL - MAY 2007

INVASIVE POINTS AND LINES
APRIL - MAY 2007



Survey (2,660 miles)

- 56 species
- 41 days
- 5,942 populations
- 7 staff

Treated

- 14 species
- 35 days
- 380 populations
- 2 staff/day

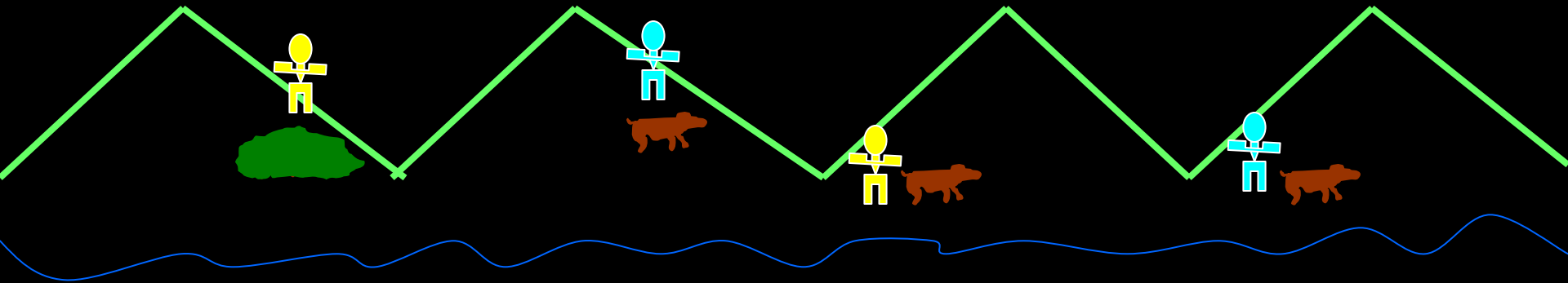
Ground Surveys



Aerial Transport- Feral Animal Removal



Aerial Transport- Feral Animal Removal



Aerial Transport- Weed Treatment



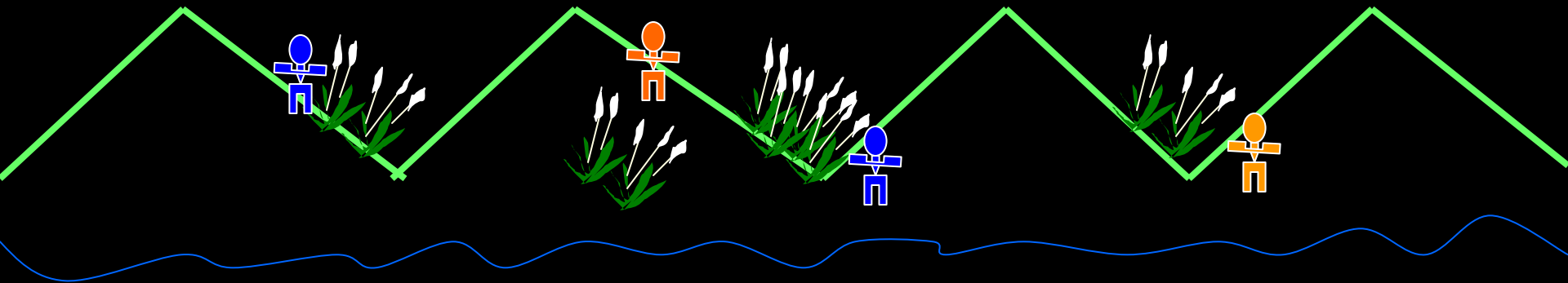
French broom treatment and resurvey



Transporting Applicators



Aerial Transport “Leap Frogging”



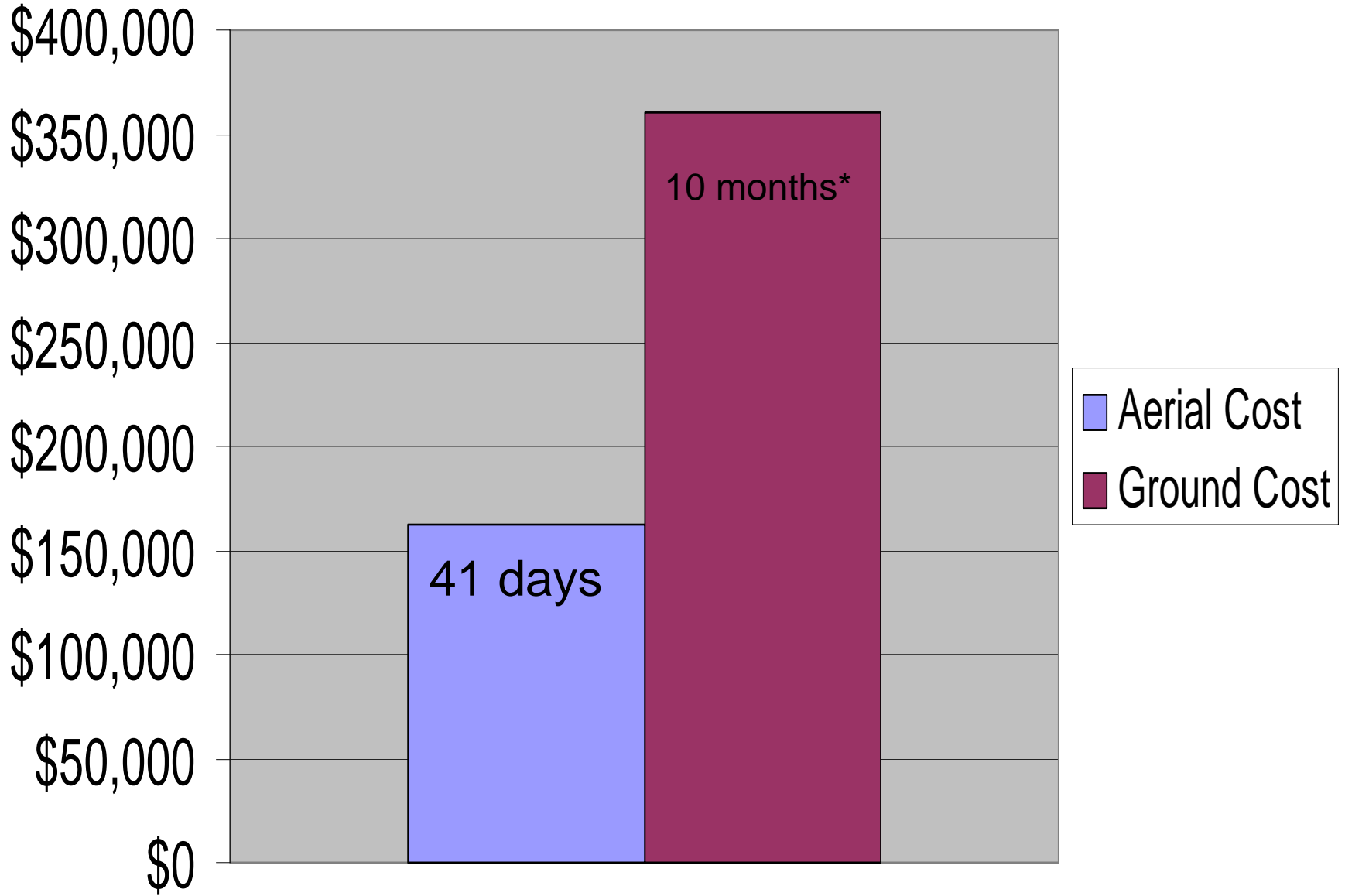
Fast Filling Ground-based Spray Rigs



Benefits of Aerial Assistance

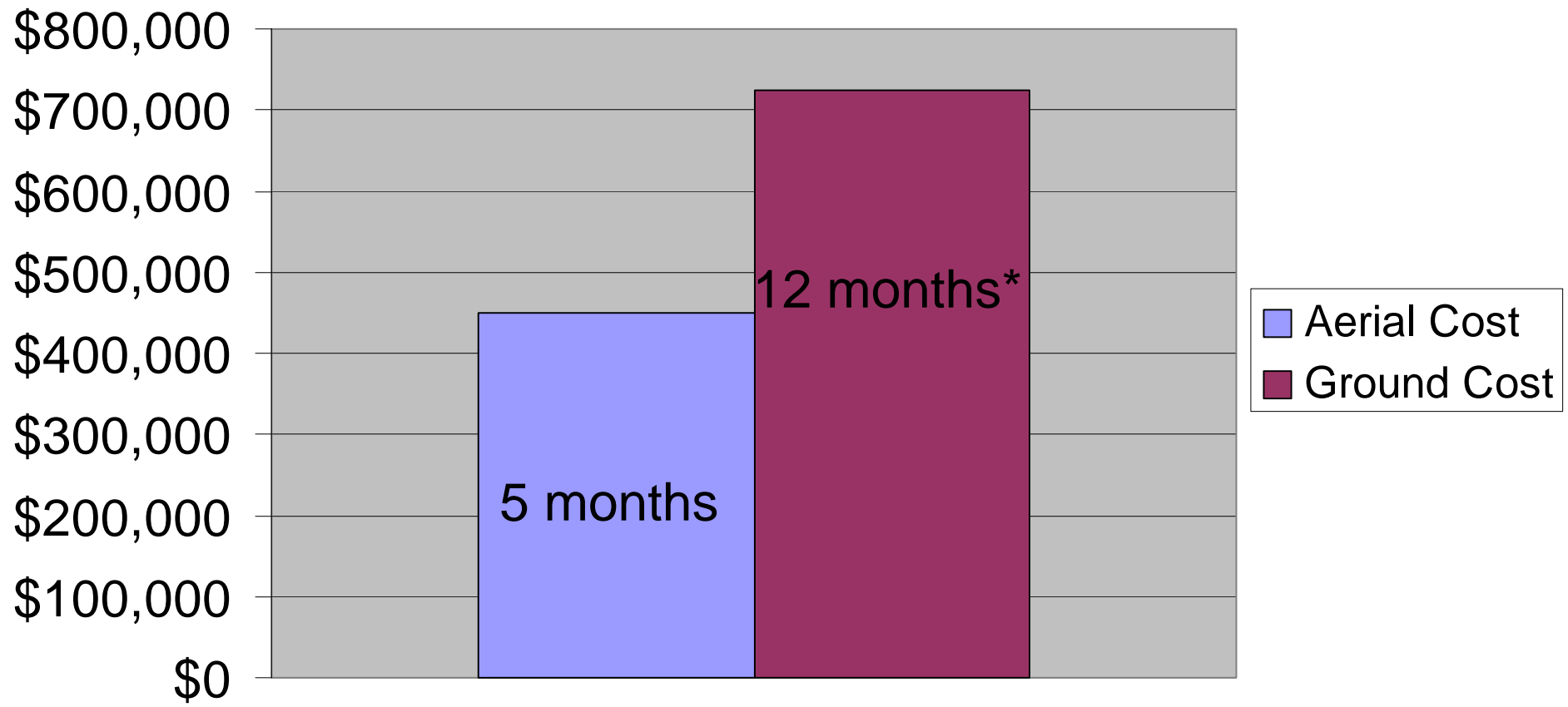
- Projects conducted efficiently
- Eliminate species dispersal
- Reduce ecosystem impact
- Complete projects quickly
- Reduce the risk of injury
- Utilize fewer resources
- Staff stay refreshed
- Cost effective
- Meet the criteria for eradication
 - Projects are successful

Weed Surveys





Weed Treatment



Acknowledgements

The Nature Conservancy

- Lotus Vermeer, Rachel Wolstenholme, and Scott Morrison

NRI Staff

- Norelle Broughton
- Diane Chakos
- Lauren Danner
- Jessica Dooley
- Ken Hutchins
- Jude Scott
- Cedrick Villasenor

Questions?



www.native-range.com



Weed Treatment

